



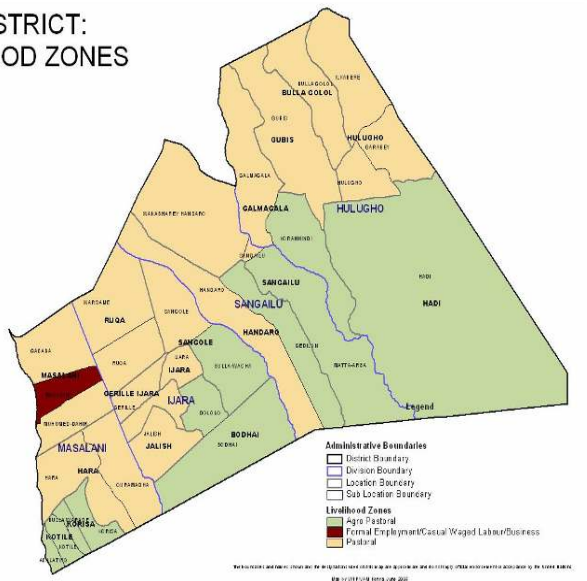
**OFFICE OF THE PRESIDENT  
MINISTRY OF STATE FOR SPECIAL PROGRAMMES**

**Arid Lands Resource Management Project II  
Revised Early Warning System**

**Drought Monitoring Bulletin: IJARA DISTRICT**  
**Period: DECEMBER 2007**

WARNING STAGES		
Livelihood Zone	Stage	Trend
Pastoral	Alert	Improving
Agro pastoral	Alert	Improving
Formal employment/ Casual labour	Normal	No change

**IJARA DISTRICT:  
LIVELIHOOD ZONES**



<ul style="list-style-type: none"> <li>Milk yield drops</li> <li>Livestock moves towards dry season grazing zones</li> </ul>	<ul style="list-style-type: none"> <li>High milk yield</li> <li>Livestock moves towards the traditional wet grazing areas</li> <li>High calving and lambing rates</li> </ul>	<ul style="list-style-type: none"> <li>Low milk availability</li> <li>Livestock moves towards the fall back dry seasons grazing areas (Boni forest)</li> <li>Wildlife-human conflicts</li> </ul>	<ul style="list-style-type: none"> <li>High milk yield</li> <li>Livestock moves towards traditional wet seasons grazing areas</li> <li>High mating rates</li> </ul>								
<b>Short Dry Spell</b>			<b>Long Rains</b>			<b>Long Dry Spells</b>			<b>Short Rains</b>		
Jan	Feb	Mar	Apr	May	Jun	Jul	Aug	Sep	Oct	Nov	Dec

### **Situation Overview**

- ✓ Moderate rainfall was received in all pastoral and agro pastoral livelihood zones. Seasonal rainfall during the month virtually benefited the entire district.
- ✓ The quality and quantity of browse and pasture had improved virtually in the entire district as a result of the rains thus making satellite herds in the Boni forest to move northwards.
- ✓ Small, medium and large water pans contained fair quantities of water. However, no water stress was observed in any of the livelihood zones although the quality of water remained poor.
- ✓ The average prices of all categories of livestock improved in the entire district except for sheep in pastoral livelihood zone. Goats' fetched highest prices in pastoral livelihood followed by agro-pastoralist livelihood zone.
- ✓ The livestock body condition and health was rated fair for all categories in both pastoral livelihood and agro-pastoralist livelihood zones.
- ✓ The nutritional status of the under fives (5 years) based on the MUAC measurement generally indicated some improvement with the rate for those at risk being recorded at 12.6 %. This could be as a result of improved health facilities management and the currently prevailing increased milk yields in most parts of district.
- ✓ Suspected cases of Lumpy Skin Disease, pulpy kidney disease and CCPP were reported in pastoralist livelihood zones of Hulugho, Sangailu and Ijara divisions.
- ✓ The availability of milk had increased virtually in all the divisions.
- ✓ Generally, the drought situation in the entire district was at alert stage and improving.

### **DSG/KFSSG RECOMMENDATIONS**

- Continue to encourage and support crop farming in the agro-pastoralist zones in order to enhance food security in the district.
- Mobilize communities of both agro-pastoral and all pastoral livelihood zones on the importance of natural resource management and conservation of the same with the view to promote economic diversification of communities in all livelihoods.
- Surveillance on Rift Valley Fever to continue.
- There was need to put measures to control malaria and other communicable diseases.

### **FOOD AID INTERVENTIONS**

- ✓ Relief food distribution to vulnerable households

## **ENVIRONMENTAL INDICATORS (STABILITY)**

### **1.1 ENVIROMENTAL INDICATORS (STABILITY)**

#### **Rainfall**

- I. Moderate rainfall had been experienced throughout the district during the month. The rains were well distributed in terms of intensity and coverage in the entire district.
- II. The trend was normal in comparison with same period of previous years as the district used to receive rains in this season.
- III. However it had positive impact on household food security in all the livelihood zones as a result of improved seasonal regeneration of pasture and browse that had positively favoured livestock body condition in turn resulting to improved milk production and market prices.

#### **Condition of Natural Vegetation and Pasture.**

- I. The browse and pasture conditions had generally improved both in quantity and quality in all the livelihood zones.
- II. The trend is normal since both browse and pasture are supposed to be regenerating in both quality and quantity.
- III. The trend had a positive impact on food security since livestock production in terms of milk, meat and market value had shown considerable improvement in all the livelihood zones
- IV. In addition agro pastoralist groups are observing the season as a good one and are anticipating a good harvest.

### **1.2 Water sources**

#### **Use of water sources**

- I. Lagas, pans and natural ponds remained the major water sources during the period.
- II. Most of the medium and large water pans had substantial volumes of water that could sustain pastoralist for the next three to four weeks.
- III. It was observed that the trend was normal in comparison with same period in previous years as water sources were supposed to increase both in numbers and storage capacity.

#### **Average distance (Kms) to water sources**

- I. The average distance to water sources from grazing areas and domestic households was recorded at (1 Km.)
- II. The recorded distance had positive impact on food security and was reduced when compared with preceding month as a result of the rains.

### **1.3 Emerging issues**

#### **1.3.1 Conflicts and insecurity**

- No cases of insecurity or skirmishes.

### **1.3.2 Migration**

- I. Most of the lactating herds are back from satellite camps to households and the livestock market has improved.
- II. It was observed that livestock migration from south to the north is increasing.

## **2.0. RURAL ECONOMY INDICATORS (FOOD AVAILABILITY)**

### **2.1 livestock production**

#### **2.1.1 Livestock body condition**

- I.* The livestock body condition and health status for all categories was fair in all livelihood zones. However there were isolated cases of FMD, black quarter anthrax reported in pastoral livelihood and cases of CCPP, Helminthiasis and trypanosomiasis observed in the agro pastoral livelihood zones
- II.* Livestock production in terms of milk yield and market value has shown worthwhile improvement although still low, as the rains received were too recent to depict big change.
- III.* Tsetse fly infestation is endemic to the region and cost of treating livestock for trips kept on undermining gains accrued by farmers from the fairly improved market value of meat and milk in all livelihood zones.
- IV.* Escalating cost of treating herds has negatively affected household food security, as it has continuously almost consumed all gains made from the good livestock market during the month.

#### **2.1.2 Livestock diseases.**

Diseases that are prevalent and affect livestock in all the livelihoods are as indicated below: -

- I. Cattle – LSD, Trypanosomiasis and black quarter anthrax.
- II. Sheep-Helminthiasis, sheep enterotoxaemia, pulpy kidney disease, etc
- III.* Goats-CCPP, Helminthiasis

#### **2.1.3 Milk Production.**

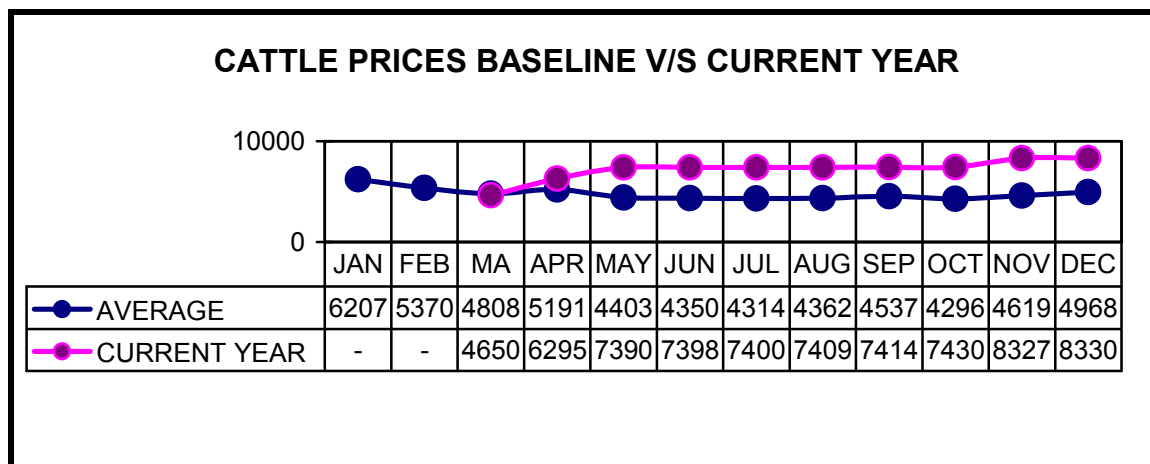
- I. Milk yield was recorded to have improved in all the livelihood zones in comparison with the preceding month and this is attributed to the occurrence of the rains received.

### 3.0 ACCESS TO FOOD

#### 3.1. Livestock marketing

##### 3.1.1 Cattle prices

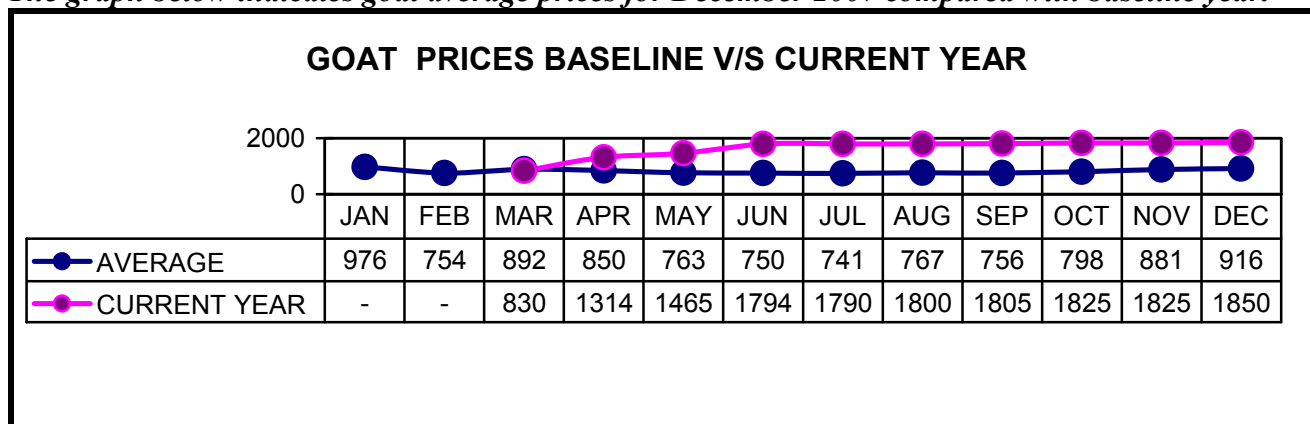
The graph below indicates cattle average prices for December 2007 compared with baseline year.



- I. Cattle prices appreciated to Ksh 8330 from Ksh 8327. The rise in price was normal for this time of the year and level was maintained well above the long term average.
- II. Improvement in livestock body condition and the fact that pastoralist conserve their animals for herd growth in such season were among the factors behind such enhancement in cattle prices.
- III. Pastoral and agro pastoralist livelihood zones recorded the highest cattle prices at Ksh 8,922 and Ksh 7,497 respectively while formal/casual employment (peri-urban) livelihood had the lowest price that was recorded at ksh. 6601.

##### 3.1.2 Goat prices

The graph below indicates goat average prices for December 2007 compared with baseline year.



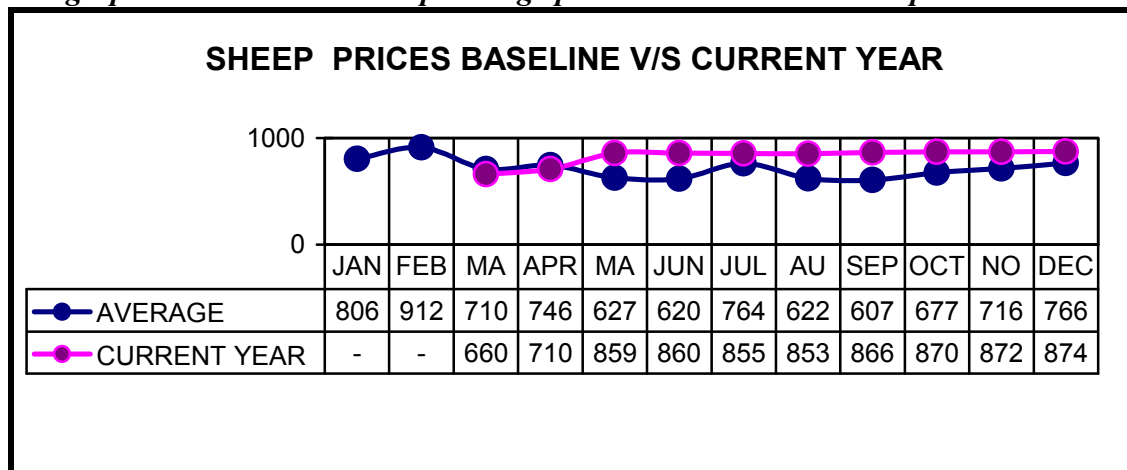
- I. The average goat prices increased compared to last reporting period from Ksh 1825- to Ksh 1850/- with the prices remaining above the long-term average. The increase in prices may be

attributed to improved body condition and the high demand by the consumers during the festive of both Idul-Alha and Christmas celebrations .

- II. The trend was normal because usually the prices of shoats are supposed to increase tremendously in such period of the year and had positive impact on household food security.

### 3.1.3 Sheep prices

The graph below indicates sheep average prices December 2007 compared with baseline year.



- I. The prices of sheep showed a negligible increase from Ksh 872 to Ksh 874 and recorded above the long-term average.
- II. The increase in prices may be attributed to improved body condition and the high demand by the consumers during the festive of both Idul-Alha and Christmas celebrations. It had positive impact on household food security.
- III. Formal/casual employment and agro pastoralist livelihood zones had recorded the highest prices at 1016/- and ksh 873/- respectively while the pastoralist livelihood zone had the lowest price of Ksh 735/-.

### 3.2 Livestock sales

- I. The rate of livestock sales generally had slightly increased though rated low when compared to last reporting period throughout all the livelihood zones.
- II. The trend was generally normal and had positive impact on house hold food security.

### 3.3 Milk consumption

- I. Milk consumption was recorded to be still low, though showing an increasing trend during the month with percentage of households that were able to feed milk to their young ones rising to 48% up from 46% when compared with the previous month.
- II. However, consumption across the entire district continued to be low since only an average of 15% of the household members consumed milk for every one category.

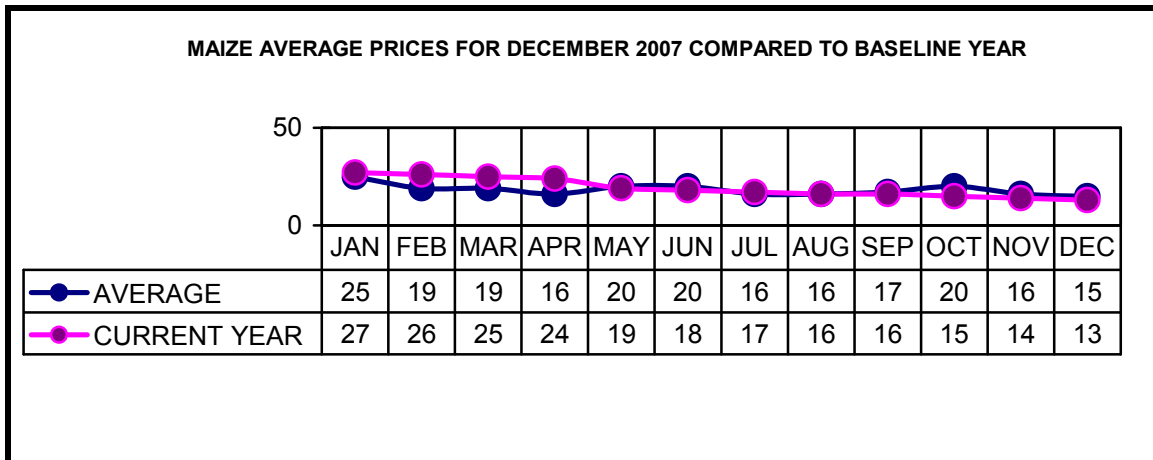
### Food prices

Prices of foodstuffs still remained stable during the month under review with no much deviation from the previous month.

### 3.4.1 Maize

- I. The average price of maize in the entire district continued to fall further when compared with that of last month. This is attributed to stabilization effect of relief distribution prior to the halting of the exercise by Red Cross.
- II. The trend was not normal for such time of the year as the prices were expected to be high.
- III. Stabilized cereal prices triggered recovery in local economy and improved food security in households particularly in formal employment livelihood zones.-
- IV. The observed trend had a positive impact on food security since most households could afford this food item and still make cash savings to adequately cover other needs in view of the prevailing fair livestock prices.

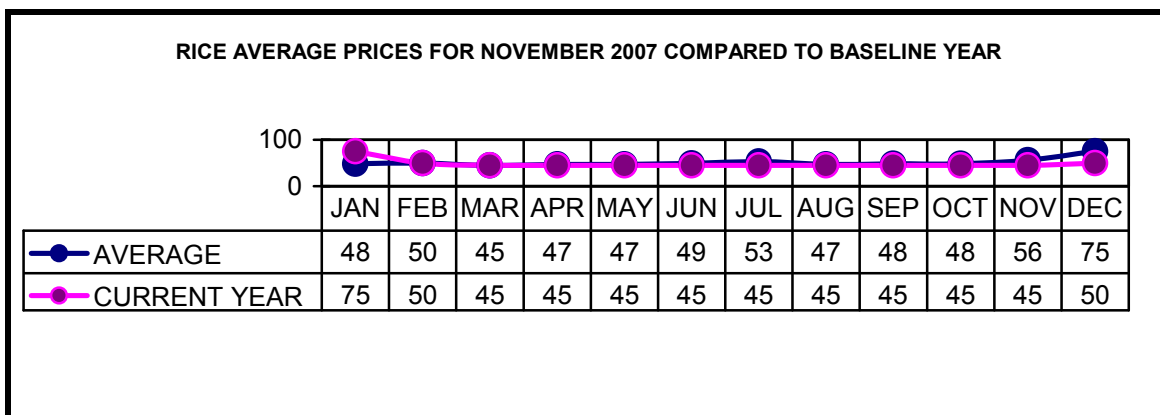
*The graph below shows maize average prices for December 2007 compared with baseline year.*



### 3.4.3 Rice

The average prices of rice had recorded an increase in pastoralist livelihood zones and this may be attributed to rains currently observed in the district making roads impassable. However the trend had positive impact on food security.

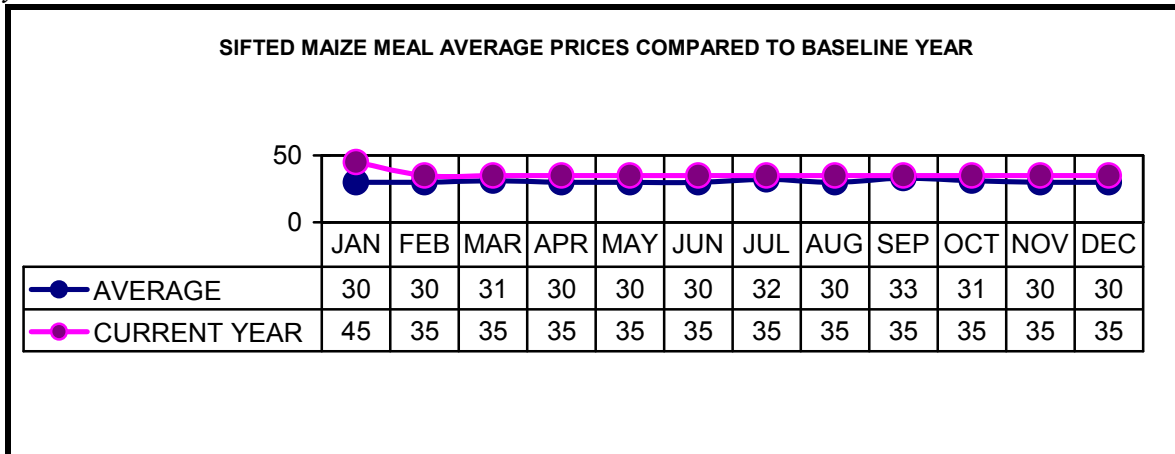
*The graph below shows Rice average prices for November 2007 compared with baseline year.*



### 3.4.2. Sifted maize meal

I. The average price of sifted maize meal remained stable and recorded as Ksh 35 per kg during month under review thus remaining the same as preceding month. This could be attributed to the availability of relief food across the entire district to vulnerable groups by GoK.

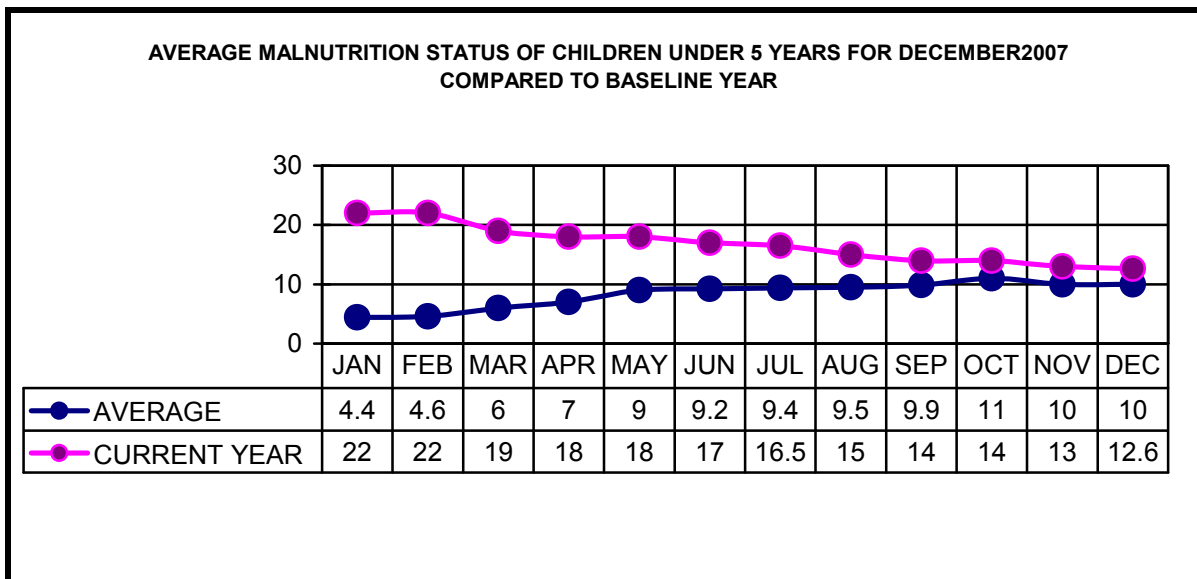
The graph below shows sifted maize meal average prices for December 2007 compared with baseline year.



## 4. HUMAN WELFARE INDICATORS

### 4.1. Malnutrition (MUAC) rates

The graph below indicates average malnutrition rates (At risk level) for December 2007 period with baseline year.



- There was a slight improvement noted on the child nutritional status based on the MUAC measurement as the percentage of children rated “AT RISK” of malnutrition dropped from 13% to 12.6% during the month.

- Areas recording high percentages of children at risk of malnutrition still remain as Pastoralist livelihood zone which stood at 17%
- The improved trend could be attributed to increased availability of milk brought about across the district by the month's rainfall.

#### **4.2 Human Health.**

- Malaria and upper respiratory tract infections were the common ailments reported, though at manageable levels.
- The current prevailing wet conditions favour breeding sites for mosquitoes hence cases of infections were on the rise.

#### **5.0 Current intervention measures and coping strategies.**

##### **5.1. Non- food Interventions.**

- ✓ Vaccination of livestock
- ✓ Water treatment chemicals to rural households.

##### **5.2. Food Aid**

- ✓ Relief food distribution to vulnerable households

##### **5.3. Coping strategies**

Among the coping measures adopted during the month were: -

- ✓ Collection and sale of bush products
- ✓ Herding and other casual work
- ✓ Sales of quarry products

#### **5.4.0. OTHER GENERAL RECOMMENDATIONS BY DSG**

##### **5.4.1 Livestock diseases**

- I. Disease surveillance should be sustained by veterinary department and other stake holders in order to contain any disease outbreaks. All stake holders to support vaccination through the vet department so as to contain any would be outbreaks.

Action: Vet department, ALRMP11, Womankind and Oxfam GB.

##### **5.4.2 Human health**

1. The MOH should strengthen and sustain disease surveillance in order to avert increase n malaria incidences. Rural health facilities to be stocked with sufficient drugs for easy access by pastoralists. Anti-malarial campaigns should also be strengthened..

Action: MOH, DPHO and CBOs.

##### **5.4.3 OTHERS**

- Agricultural extension services should be strengthened by DAO
- KWS should make its concessions to the community conservancy at Ishaq Bini good as urgently as possible so as to pave way for the immediate and effective operationalization of project by stake holders.



