

DROUGHT MONTHLY BULLETIN, AUGUST 2008

Garissa District

Warning Stages

SEASONAL CALENDER

Livelihood Zone	Warning stage	Trend
Agro-pastoral	Alert	Worsening
Formal employment/ Casual labor.	Alert	Worsening
Pastoral- Cattle/Sheep.	Alert	Worsening
Pastoral- all species	Alert	Worsening
Pastoral: Camels and Goats	Alert	Worsening
District	Alert	Worsening

Situation overview

- Most parts of the district received no rainfall. However, light coastal showers were recorded in Galmagalla, parts of Jarajilla and Liboi divisions.
- Quality and quantity of pasture and browse diminished considerably compared to the preceding month. Forage in areas close to permanent and temporary water sources got depleted.

- Some of the large water pans in the district dried up, while water in the remaining pans became unsuitable for human consumption. Large water pans such as Durwaya, Rig and Guyo Bombi, Koriale dried up.
- Accessibility of water for rural households deteriorated further compared to the previous month. Distances to water points for household use stood at 8-10km to.
- Livestock watering distances continued to increase as the long dry spell progressed. The trekking distance stood at 10-15 km.
- No conflicts or human displacement cases were reported in the course of month under review.
- Migration was minimal in most parts of the district but in areas where water pans dried up, livestock moved to the closest water sources.
- Livestock body condition deteriorated due to low availability of pasture and browse and long distances in search of water in most parts of the district.
- No notable livestock diseases were reported during the month. However, frequent occurrences of tick-borne diseases and worm infestation were common in the pastoral areas.
- Milk production continued to decline when compared to the preceding month due to the long dry season, coupled with diminishing pasture and browse.
- Cattle prices continued to decline, with the average price for the month dropping from Ksh 11,167 in July to 11,043. The drop was caused by worsening livestock body condition resulting from lack of pasture and browse.
- The price of goats continued to drop compared to the preceding month. Goats fetched an average of Ksh 1,454, down from Ksh 1,466 in July. The price trend could be reversed after the start of the Muslim month of Ramadhan.
- Sheep prices also dropped to Ksh 1,184 from Ksh 1,339 in July.
- The nutritional status of children below five years declined slightly during the month. The number of children rated as being at the risk of malnutrition rose to 6.9 per cent from 6.4 in July. The decline was due to declining availability of milk, coupled with high food prices.

Current interventions

Non-food interventions

- Repair, servicing and procurement of borehole equipment continued.
- Equipping of Abdisemit borehole was successfully completed.

Food aid

- Except Galmagalla, Liboi and Jarajilla divisions the rest of the nine divisions continued to receive food aid (relief).
- EMOP relief food covering 45,905 beneficiaries in the district.

Recommendations

- Continue to support small scale irrigation farms along River Tana
- Continue to support livestock disease surveillance, treatment and vaccinations activities in the district.
- Continue to support micro-and macro youth and woman group projects in both urban and rural communities

- Give more support to extension services particularly from livestock production and department of crop productions.
- Give more attentions to livestock boreholes servicing, repairing and procuring of equipment at this critical time before October short rains.

1.0 Environmental condition (stability)

1.1 Rainfall

- No rainfall was received in most parts of the district. However, Galmagalla, part of Jarajilla and Liboi divisions experienced light coastal showers. The rains slightly rejuvenated the vegetation in the areas.
- The coastal showers are normal but sometimes heavy.
- Windy and dry weather conditions prevailed during the month. However, nights were mainly cold and windy.

1.2 Condition natural vegetation and pasture

- The quality and quantity of pasture and browse diminished considerably compared to the preceding month.
- Forage got depleted in areas close to permanent and temporary water sources.

1.3 Water sources and availability

1.3.1 Use of water sources

- The main sources of water in the district remained Tana River, boreholes, water pans, shallow wells along the Galana gulf in Modogashe and Benane spring.
- Some of the large water pans in the district dried up, while the water in the remaining pans became unsuitable for human consumption.

1.3.2 Household access to water

- Accessibility of water for households declined compared to the previous month. Distances to water sources stood at 8-10 km.

1.3.3 Livestock access to water

- Livestock distances to watering points continued to increase due to the prevailing dry spell. The trekking distance to water sources averaged between 10-15 km.
- Pasture and browse got depleted around water sources further complicating the situation.

1.4 Emerging issues

1.4.1 Insecurity/conflict/ human displacement

- No cases of conflict or human displacement were reported in the course of month.

1.4.2 Migration

- Migration was minimal in most part of the district. However, in areas where water pans dried up, livestock moved to the closest water sources.

1.4.3 Implications on food security

- Diminishing pasture and browse, coupled with long livestock trekking distances in search of water, resulted in poor body condition.
- This impacted negatively on food security in the district.

2.0 Rural economy indicators(food availability)

2.1 Livestock production

2.1.1 Livestock body condition

- Livestock body condition deteriorated compared to the preceding month.
- The decline was due to low availability of pasture and browse, and long trekking distances in search of water in most parts of the district.
- Body condition of livestock in Galmagalla division was expected to improve because of the coastal showers experienced in the area during the month.

2.1.2 Livestock health and diseases

- No notable livestock disease outbreak was reported during the month.
- However, frequent occurrences of tick-borne disease and worm infestation were reported in pastoral areas.

2.1.3 Milk production

- Milk production continued to decline compared to the preceding month.
- The decline was due to the prevailing long dry spell, coupled with diminishing pasture and browse.
- The trend was normal for the season.

2.2 Crop production

2.2.1 Crop production activities along River Tana

- Irrigated farms along River Tana continued to produce vegetables and fruits in large quantities.

2.2.2 Pests and crop diseases

- No pests or crop diseases were reported during the month under review.

2.2.3 Harvest

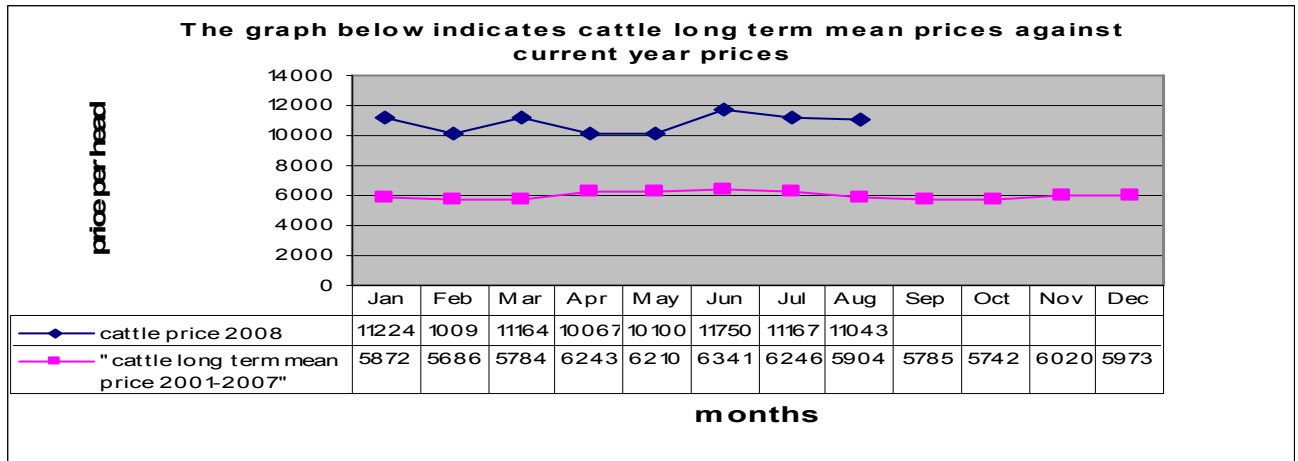
- The only harvests realised in the district were fruits and vegetables from irrigated farms along River Tana.

3.0 Access to food

3.1 Livestock marketing

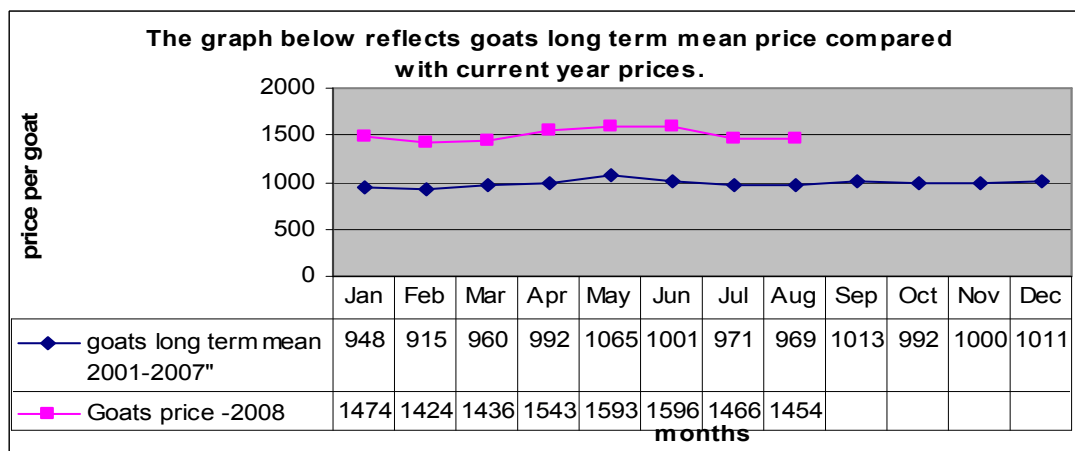
3.1.1 Cattle prices

- Cattle prices continued to decline, with the average price dropping from Ksh 11,167 in July to Ksh 11,043.
- The price drop was due to worsening livestock body conditions resulting from lack of pasture and browse.
- However, the price was still higher than the long term mean.



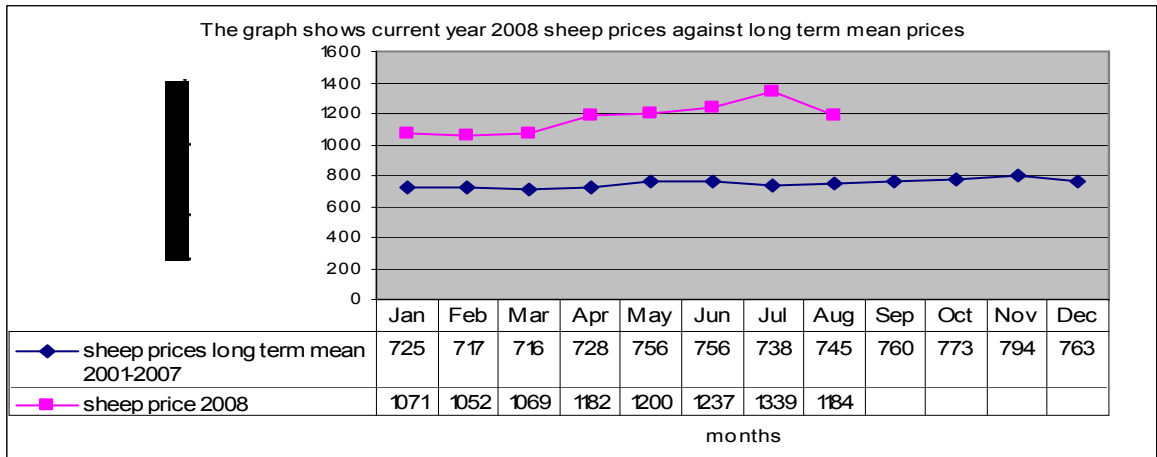
3.1.2 Goats prices

- The price of goats continued to drop compared to the preceding month. The price dropped slightly from Ksh 1,466 in July to Ksh 1,454.
- The trend could reverse during the Muslim month of Ramadhan.



3.1.3 Sheep prices

- Sheep prices dropped compared to the preceding month. The price dropped from Ksh 1,339 in July to Ksh 1,184.
- The price drop is a normal trend during dry seasons.



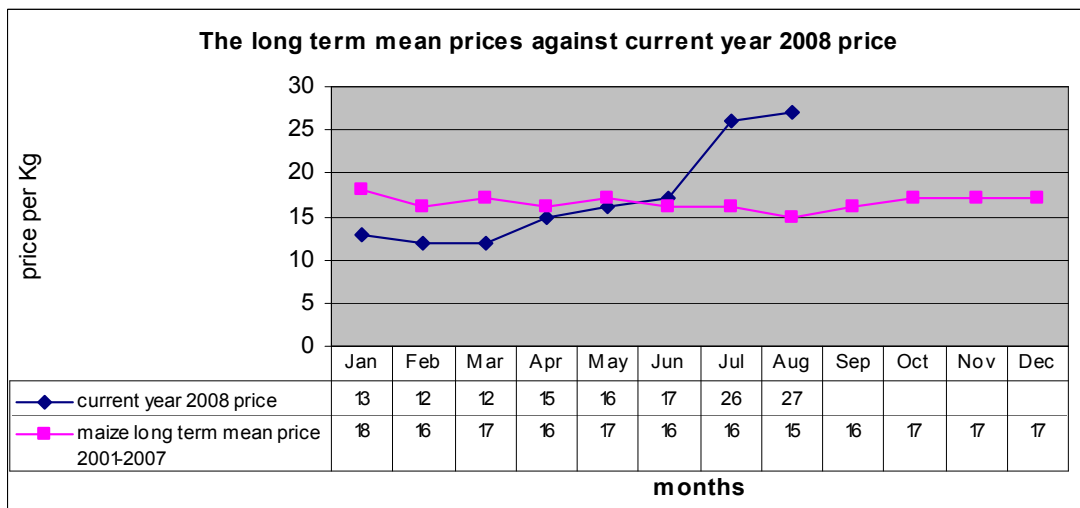
3.2 Livestock sales

- Cattle and sheep sales increased compared to July sales.
- Rural communities sell their livestock in order to meet other food needs.

3.4 Crop prices

3.4.1 Maize prices

- Maize prices continued to increase when compared with the preceding month. The prices of all cereals showed an increase when compared with the preceding months.



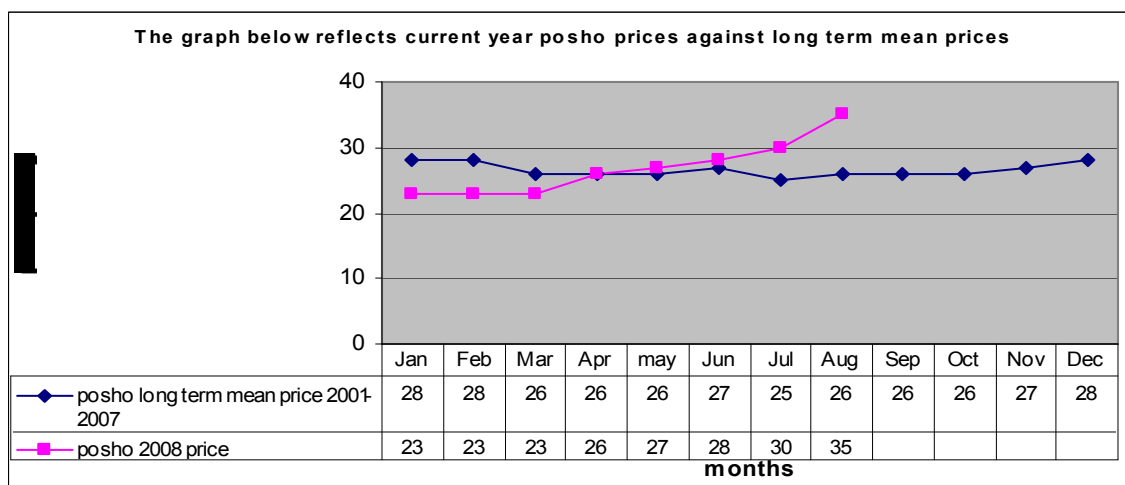
3.4.2 Beans prices

- The prices of beans remained the same as July at Ksh 80 per kilo.

3.4.3 Posho (maize meal)

- The prices of Posho and packaged maize meal, which form the pastoral communities' main diet, rose compared to the preceding month.

- A kilogram of posho and packaged maize meal traded at Ksh 35 and Ksh 50 respectively. The prices were highly exorbitant, making the food commodities unaffordable for rural communities.



3.4.3 Purchase of other food commodities

- The prices of essential food commodities such as sugar and cooking oil continued to rise compared to the preceding month.
- A litre of oil sold at Ksh140, while a kilo of sugar traded at Ksh 75.

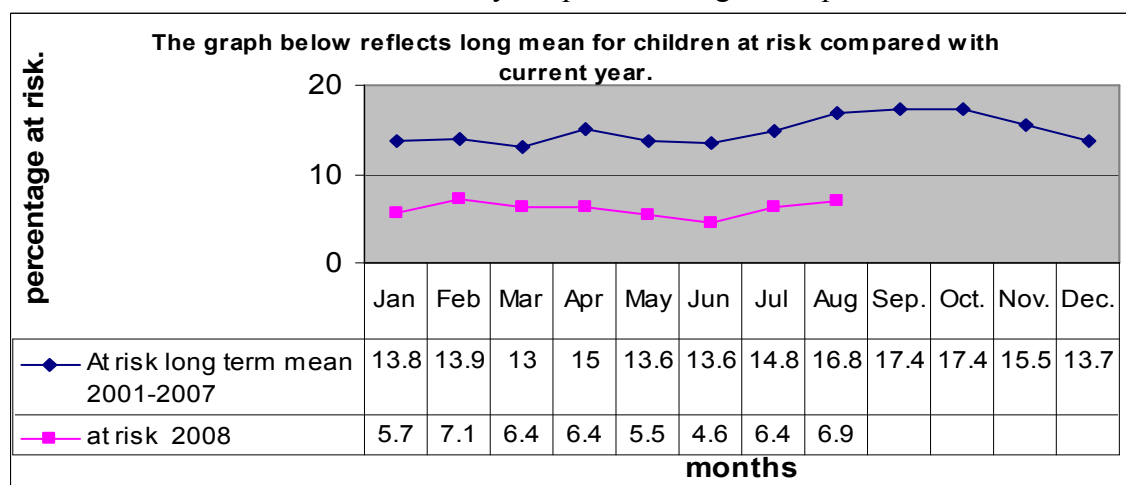
3.5 Implications on food security

- Increase in food prices, especially cereals, and low livestock prices due to deteriorating body conditions impacted negatively on food security in the district.

4.0 Human welfare indicators

4.1 Nutritional status

- The nutritional status of children below five (5) years and above one year slightly declined. It was 6.4% in July and 6.9% in August for those at risk. This is due to decline in milk availability coupled with high food prices.



4.2 Human health

- The health of adults and children improved generally but cases of upper respiratory tract infections were reported in some parts of the district due to cold windy weather conditions that prevailed in the early part of the month.
- Cases of vitamin A deficiency were reported in Galmagalla division while cases of jigger infestation were reported in Ali Emich in Bura division.

4.3 Flagged areas (affected areas)

- Danyere division, which registered the highest nutritional problem compared to other divisions.

5.0 Current intervention measures

5.1 Non-food

- Repair, servicing and procurement of borehole equipment continued.
- Equipping of Abdisemit borehole was successfully completed.

5.2 Food aid

- Except Galmagalla, Liboi and Jarajilla divisions the rest of the nine divisions continued to receive food aid (relief).
- EMOP relief food covering 45,905 beneficiaries in the district.

5.3 Coping strategies

- Using camels and donkeys to water calves and weak animals at home in areas far from water sources.
- Petty trade such as tea kiosks and hawking.

6.0 Recommendations

- Continued support to small-scale irrigation farms along River Tana.
- Continued livestock disease surveillance, treatment and vaccinations in the district.
- Support of youth and women groups' micro-projects in urban and rural communities.
- Enhanced extension services, especially by livestock and crop production departments.
- Servicing, repair and procuring of equipment for boreholes before the short rains set to start in October.