

DROUGHT MONTHLY BULLETIN, AUGUST 2008

Tana River District

Warning Stages

Warning Stage		
Livelihood Zone	Stage	Trend
Mixed Farming Zone	Alert/Alarm	No Change
Marginal Mixed Framing Zone	Alarm	worsening
Pastoral Zone	Alarm	Worsening
DISTRICT	Alarm	Worsening

Time Line Activities

<ul style="list-style-type: none"> ▪ Milk yield drops ▪ Livestock move towards dry seasons grazing areas 	<ul style="list-style-type: none"> ▪ High milk yield ▪ Livestock move towards the traditional wet season grazing areas. ▪ High Calving and lambing rates. 	<ul style="list-style-type: none"> ▪ Low milk availability ▪ Livestock move towards the fall back dry seasons grazing areas (riverine and delta) 	<ul style="list-style-type: none"> ▪ High Milk yield ▪ Livestock move back to the traditional wet season grazing areas. ▪ Calving rates increases 								
Short dry spell			Long rains			Long dry spell			Short rains		
Jan	Feb	Mar	Apr	May	Jun	Jul	Aug	Sept	Oct	Nov	Dec

Short rains harvest

Planting/weeding

Long rains harvest

Planting/Weeding

Situation overview

- Light showers were recorded in the marginal mixed-farming and mixed-farming areas during the month under review. However, the pastoral areas remained dry.
- The water situation continued to deteriorate as most pans/dams dried up, while water levels in traditional wells declined rapidly. This left most pastoral areas with an acute water shortage.

- The condition of pasture and browse deteriorated in the marginal mixed-farming and pastoral zones. Most of the available pasture was in form of standing hay. The pasture condition in the (delta) mixed-farming zone remained fair but was threatened by high influx of livestock into the area.
- Livestock body and health conditions remained favourable in most parts of the district. However, there were signs of body stress in some areas due to long distance trekking in search of water and pasture.
- Outbreak of PPR (Pestes des Petit Ruminants) was reported mainly in the northern areas of Bangale and Madogo.
- The prices of all livestock species dropped but remained above the seasonal average.
- Maize prices dropped slightly compared to July.
- Milk production and consumption at the household level continued to decline during the month. However, milk prices indicated a rising trend.
- Most farmers in the mixed-farming zone received below normal harvests due to floods, poor rainfall and lack of certified seeds.
- Most crops in the northern marginal mixed-farming areas wilted before maturity due to harsh weather.
- The nutritional status of children below five years improved, with those rated as being at risk of malnutrition (based on the MUAC measurement) dropping from 15.1 per cent in July to 13.5.
- A very high influx of livestock was reported in the delta (mixed-farming zone) and in the existing water sources of the hinterland pastoral areas. The situation resulted in heightened tension, especially between the farming and pastoral communities due to cases of livestock straying into farm fields.
- The ongoing harvests improved (temporarily) the food security situation in the district, especially in the mixed-farming and parts of the marginal mixed-farming areas.

Recommendations to DSG/KFSSG

- Enhance disease surveillance and vaccination on reported livestock diseases across the district and especially in those areas where PPR has been reported.
- Enhance supplementary and therapeutic feeding, especially in the flagged areas.
- Continue with food assistance in needy areas.
- Food For Assets to be rolled out to other deserving areas.
- Control of wildlife to minimise incidences of human/wildlife conflicts arising out of destruction of crops and predation on livestock.

Current interventions

Non-food aid

- Water and sanitation activities by the Kenya Red Cross and German Agro-Action.
- Rehabilitation of both Bura and Hola irrigation schemes.
- Water trucking to the most affected pastoralist-dominated hinterland areas such as Assa, Wayu and Bangale.
- Conflict management and peace-building initiatives in Tana River and Tana Delta districts.

Food aid

- Distribution of relief food under EMOP is expected to resume following the outcome of the food security assessment carried out in July.
- School-feeding programme in all primary schools.
- Supplementary and therapeutic feeding programmes in hospitals and outreach programmes by the MOH, UNICEF, WFP and Red Cross.

1. Environmental indicators (stability)

1.1 Rainfall

- Light showers were received in the marginal mixed-farming and mixed-farming areas. However, the pastoral areas continued to be dry with temperatures continuing to rise, ranging from 27°C to 31°C.

Rain fall figures recorded in respective livelihood zones are as below.

Zone	Amount in mm	
	July	August
Mixed Farming Zone (Garsen/Kipini)	18.6mm	53.5mm
Marginal Mixed Farming Zone (Hola)	0.0mm	48.5mm
Pastoral Zone (Wayu/Bangale)	0.0mm	0.0mm

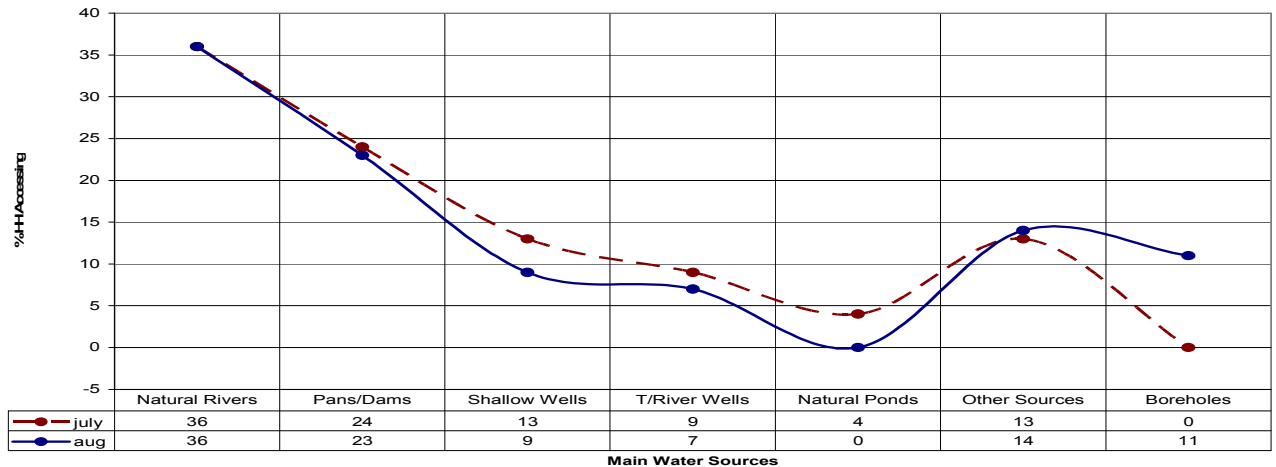
1.2 Condition of natural vegetation and pasture

- The condition of pasture and browse deteriorated in the marginal mixed-farming and pastoral zones. Most of the available pasture was in form of standing hay.
- The condition of pasture in the (delta) mixed-farming zone remained but under threat due to high influx of livestock into the area.
- The average distances to grazing areas increased to 7kms – 15kms from 4kms – 7kms in July.

1.3 Water sources and availability

- The water situation continued to deteriorate as most pans/dams dried up, while water levels in traditional wells declined rapidly.
- This left most pastoral areas with an acute water shortage. The worst hit areas include Assa in Garsen, Wayu in Galole and most parts of Bangale.

TRD Main Water Sources and Percentage of HH accessing during the month of July 2008 Compared to August 2008



1.4 Emerging issues

1.4.1 Insecurity/conflict /human displacement

- There was heightened tension in the delta (mixed-farming zone) and along the riverine areas (marginal mixed-farming) between the farming and the pastoralist communities due to influx of livestock and cases of livestock straying into farm.
- Human/wildlife conflicts arising from livestock predation and crop destruction continued to be reported in the district.

1.4.2 Migration

- Livestock migration was reported towards the delta, Kora and Tsavo East game reserves and along the river.
- There was high concentration of livestock around water sources in the hinterland pastoral areas.
- Incidences of migration of entire households were reported in the worst affected areas of Assa and Waldena.

1.5 Implications on food security

- The ongoing harsh weather impacted negatively on food security in the district. The body condition of livestock is expected to deteriorate and directly affect milk yields and prices.

2. Rural economy indicators (food availability)

2.1 Livestock production

2.1.1 Livestock body condition

- Livestock body condition and health remained fair in all livelihood zones. However, body stress was evident in some areas due to long trekking distance in search of pasture and water.

2.1.2 Livestock diseases

- Outbreak of PPR was reported in Bangale and parts of Madogo, leading to closure of livestock markets and ban on transportation of the affected species.
- There is ongoing vaccination by the veterinary department.

2.1.3 Milk production

- Milk production at the household level continued to decline.
- This was expected due to poor quality and quantity of pasture and deteriorating livestock body condition. anticipated due to the prevailing climatic conditions.

2.2 Crop production

2.2.1 Timeliness and condition of various crop productions

- Most farmers in the mixed-farming zone received below normal harvest due to floods, poor rainfall and lack of certified seeds.
- Most crops in the northern marginal mixed-farming areas wilted before maturity due to effects of prevailing dry spell.

2.2.2 Pests and diseases

- No outstanding incidences of pests and diseases were reported.

2.2.3 Harvests

- Maize and legumes harvests went on in areas that did not experience drought and floods. Yields were, however, below normal.

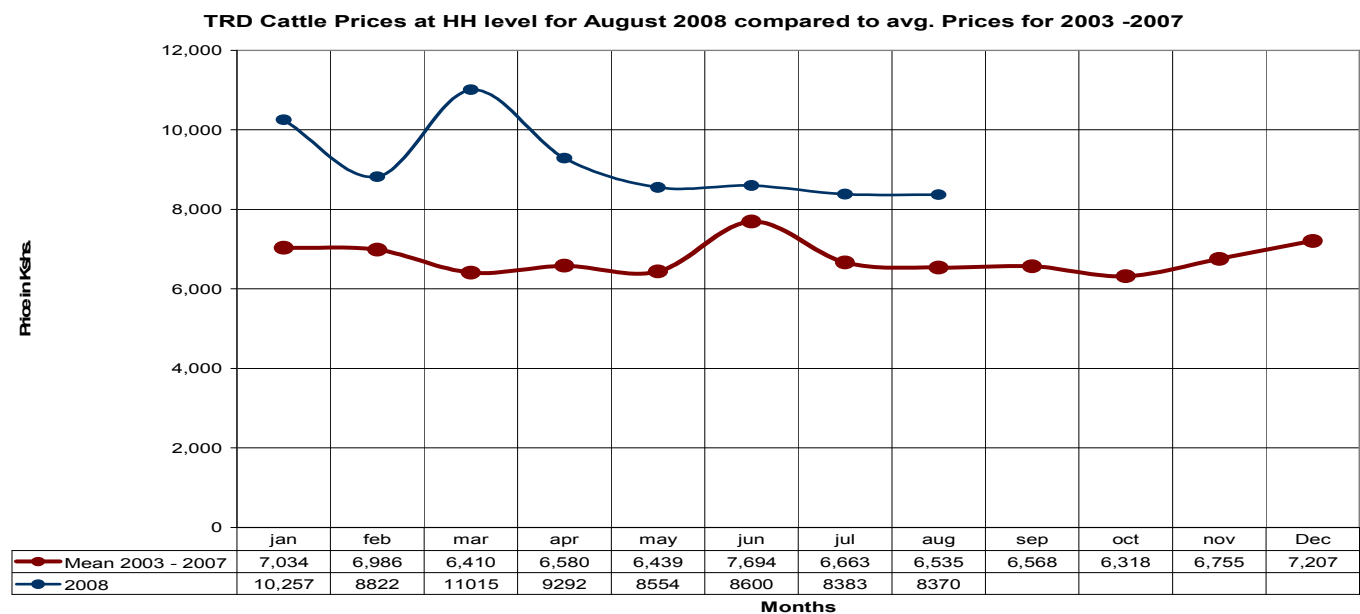
2.2.4 Implications on food security

- Food security was expected to temporarily improve, especially in the mixed-farming and parts of the marginal mixed-farming areas, in view of ongoing harvests.
- However, pastoral areas may continue to be food stressed if the present climatic conditions prevail.

3. Access to food

3.1 Livestock marketing

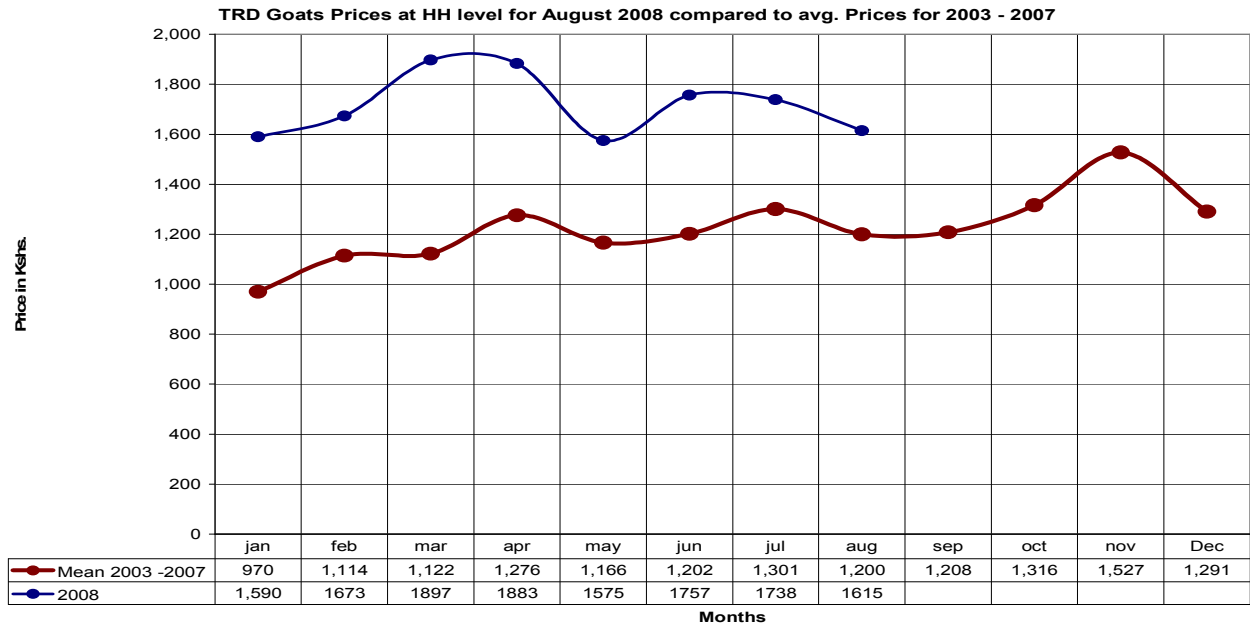
3.1.1 Cattle prices



- The price of cattle dropped slightly to Ksh8,370 from Ksh 8,383 in July.

- The price was, however, above the long term seasonal average of Ksh 6,535 recorded during the 2003 -2007 period.
- The price drop was expected due to poor body conditions following inadequate pasture.

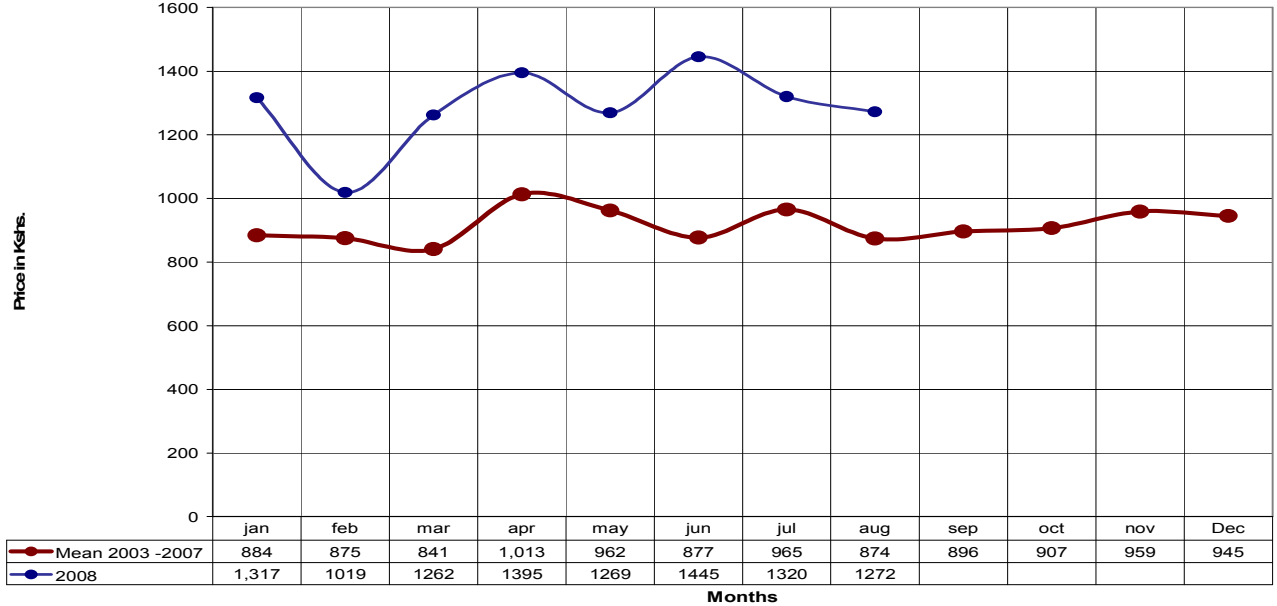
3.1.2 Goat prices



- There was a general decline in the price of goats from Ksh 1,738 in July to Ksh1, 615.
- However, the price was higher than the long term seasonal average price of Ksh 1, 200 recorded during 2003 – 2007.
- Though price drop at the time of the year was expected, it might have been accelerated by the outbreak of PPR, which led to closure of markets and ban on transportation of the affected species.

3.1.3 Sheep prices

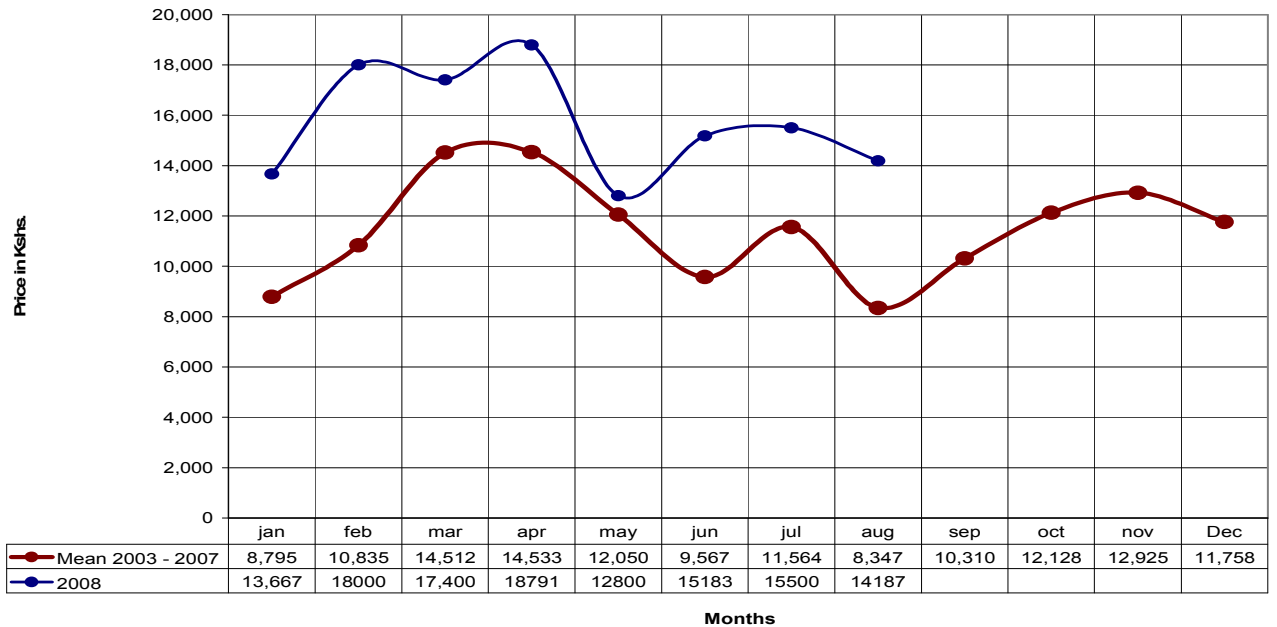
TRD Sheep Prices at HH level for August 2008 compared to avg. Prices for 2003 - 2007



- The price of sheep dropped from Ksh1,320 the month before to Ksh1, 272.
- However, the price is still above the seasonal average of Ksh 874 observed during the 2003 – 2007 period.
- The prices are expected to drop further due to the closure of markets following a PPR outbreak and subsequent quarantine.
- .

3.1.4 Camel prices

TRD Camel Prices at HH level for August 2008 compared to avg. Prices for 2003 - 2007



- Camel price dropped slightly to Ksh14,187 from Ksh15, 500 the month before.

- The prices were more favourable than the long term seasonal average of Ksh 8, 347 during the 2003 – 2007 period.
- The price drop may continue as body conditions deteriorate due to depleting range resources.

3.2 Livestock sales

- There was a general rise in the sales volumes of almost all livestock species.
- The trend was expected since pastoralists tend to sell off more of their stocks during the drought spells.

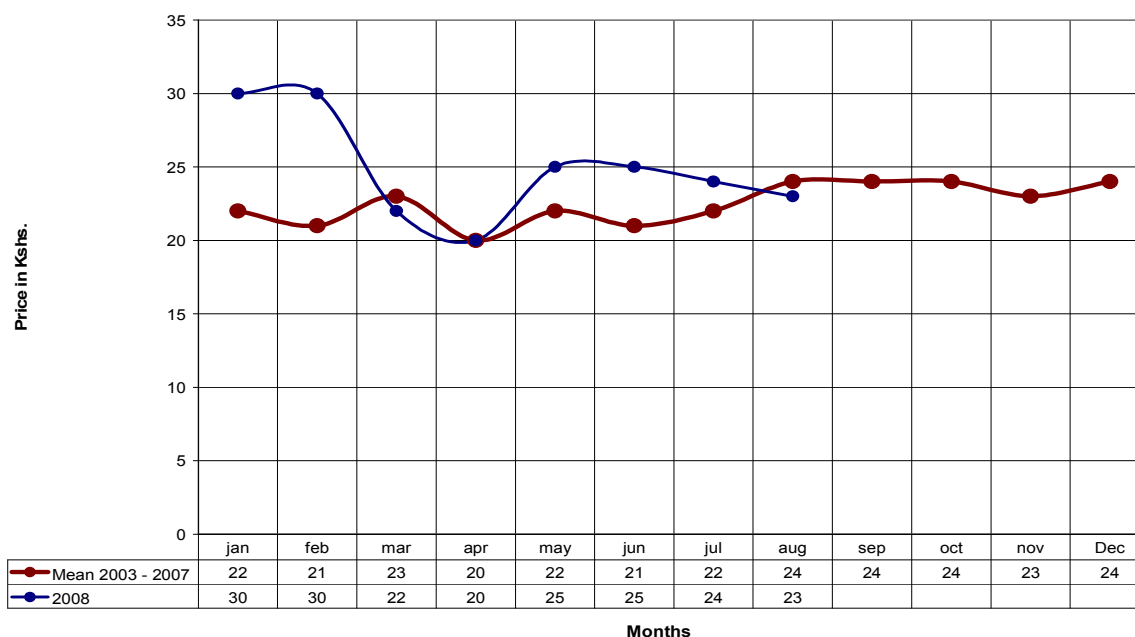
3.3 Milk consumption

- Milk consumption at the household continued to decline. This could be due to low yields resulting from inadequate pasture.

3.4 Crop prices

3.4.1 Maize prices

TRD Maize Prices at HH level for August 2008 compared to avg. Prices for 2003 - 2007



- The price of maize dropped slightly to Ksh 23 during the month, from Ksh24 in July.
- The price was also lower than the seasonal average price of Ksh 24 recorded during the 2003 – 2007 period.
- The price is expected to continue declining owing to the ongoing harvests.

3.5 Income

3.5.1 Crop income

- Income from sale of crops rose to 8 per cent during the month from 7.3 in July.
- The income is expected to rise as farmers started selling recently harvested maize and green grams.

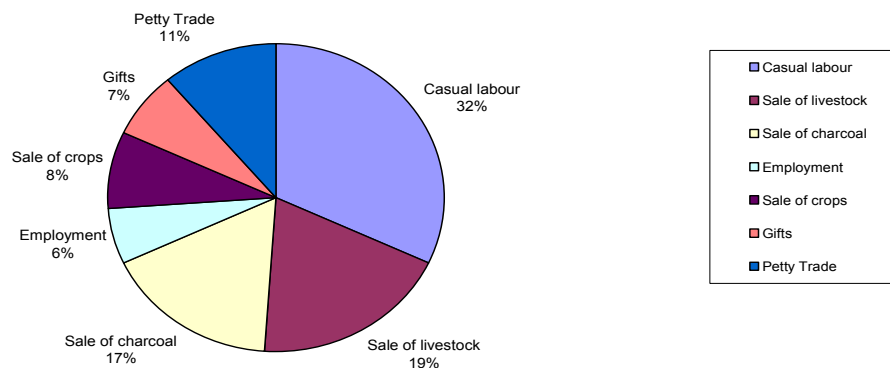
3.5.2 Livestock income

- Incomes from livestock and livestock products dropped significantly during the month despite increasing sales volumes.
- Income from rise livestock products was negligible and was attributed to low milk yields.

3.5.3 Other income

- Other sources of income for households were casual labour (31per cent), sale of charcoal (17), petty trade (11), gifts/remittance (7) and employment (6).

TRD Main Sources of Income at HH level for the Month of August 2008



3.6 Implications on food security

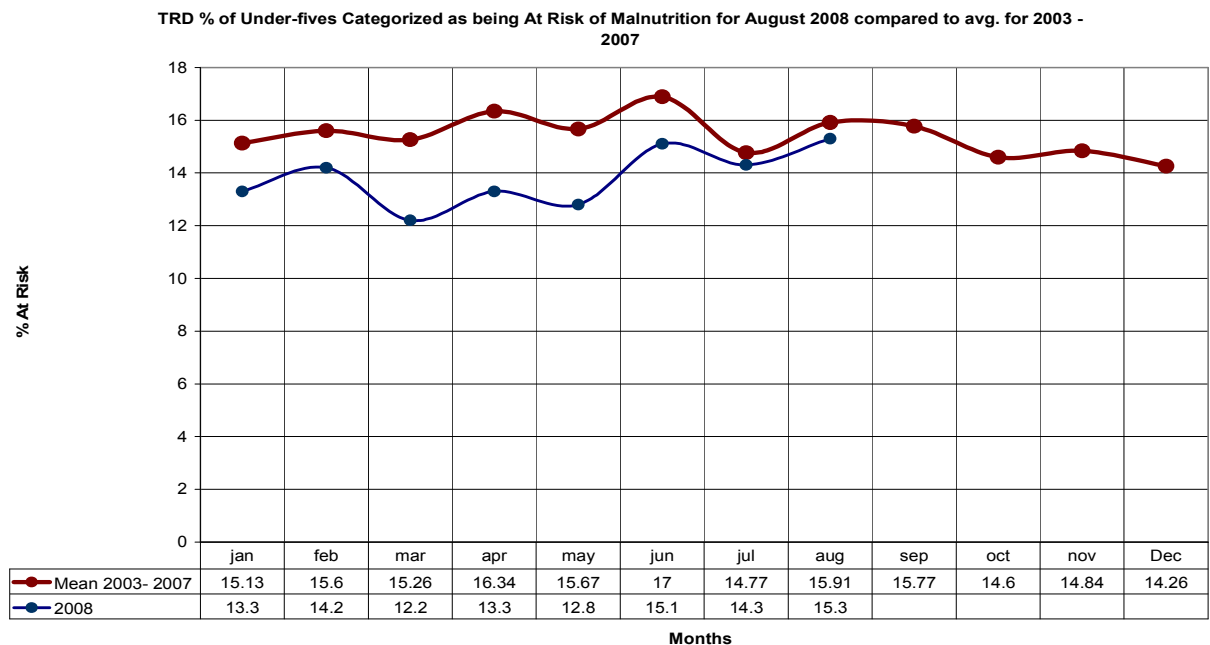
- The negative trends reflected in the economic indicators pose a threat to the food security of the district.

4.0 Welfare indicators (utilisation of food)

4.1 Nutrition status

- The nutrition of children below five years improved during the month, with the percentage of those rated as being at risk of malnutrition (using the MUAC measurement) dropping to 13.5 from 14.3 in July.
- The percentage of children rated at risk of malnutrition is also lower than the long term average of 15.91 per cent in 2003 – 2007. It is also below the emergency thresholds.
- Areas with the highest rates of children at risk of malnutrition were Bura (34.7 per cent), Bangale (21.7) and Galole

(15.8).



4.2 Human health

- Malaria still remains the leading cause of morbidity in the district for children below five years and adults.
- Other diseases reported were upper respiratory infections, pneumonia, and diarrhoea.

5.0 Current interventions

Non-food aid

- Water and sanitation activities by the Kenya Red Cross and German Agro-Action.
- Rehabilitation of both Bura and Hola irrigation schemes.
- Water trucking to the most affected pastoralist-dominated hinterland areas such as Assa, Wayu and Bangale.
- Conflict management and peace-building initiatives in Tana River and Tana Delta districts.

Food aid

- Distribution of relief food under EMOP is expected to resume following the outcome of the food security assessment carried out in July.
- School-feeding programme in all primary schools.
- Supplementary and therapeutic feeding programmes in hospitals and outreach programmes by the MOH, UNICEF, WFP and Red Cross.
-

5.3 Other coping strategies

- Casual labour.
- Migration from areas experiencing water and pasture stress to less affected areas.
- Charcoal burning.
- Remittances and gifts from relatives.

- Petty trade.

5.4 Recommendations by DSG

- Continued food assistance in areas where food security has not improved.
- Food For Assets (FFA) to be rolled out to other deserving areas.
Action: District Steering Group/Partners/Communities
- Enhance disease surveillance and vaccination on reported livestock diseases across the district, especially in those areas where PPR has already been reported.
Action: DVO/District Steering Group/Partners/Communities
- Enhance supplementary and therapeutic feeding especially in the flagged areas.
Action: MOH/District Steering Group/Partners/Communities
- Control of wildlife to minimise human/wildlife conflict in terms of crop destruction and predation. *Action: KWS/District Steering Group/Partners/Communities*