

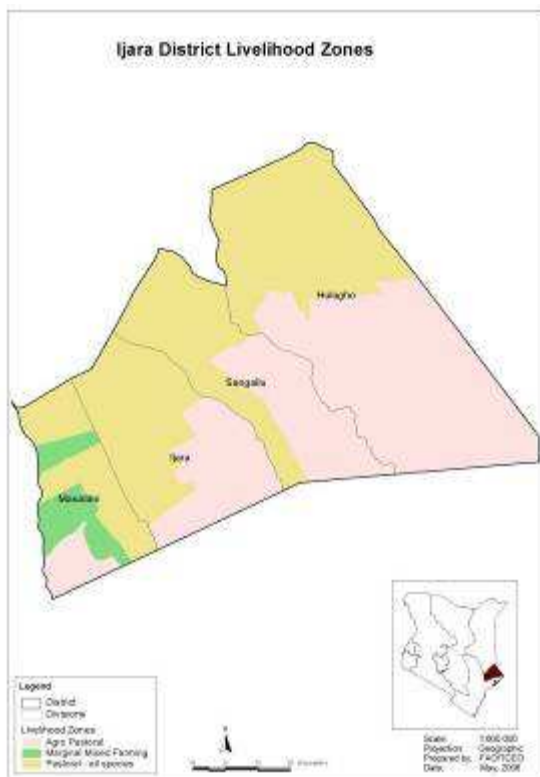


**OFFICE OF THE PRIME MINISTER
MINISTRY OF STATE FOR THE DEVELOPMENT OF NORTHERN KENYA AND OTHER ARID LANDS
ARID LANDS RESOURCE MANAGEMENT PROJECT II**

DROUGHT MONTHLY BULLETIN, DECEMBER 2008

Ijara District

Warning Stages



Livelihood Zone	Stage	Trend
Pastoral	Alarm	Worsening
Agro pastoral	Alert	Worsening
Formal employment/ Casual labor	Alarm	Worsening

SEASONAL CALENDAR

-Milk yields drop -Livestock moves towards dry season grazing zones			-High milk yields -Livestock moves to the traditional wet grazing areas. -High calving, kidding and lambing rates.			-Low milk availability -Livestock moves towards the fall back dry seasons grazing areas (Boni forest) -Wildlife-human conflicts				-High milk yield -Livestock moves towards traditional wet seasons grazing areas -High mating rates	
Short Dry Spell			Long rains			Long dry spell				Short rains	
Jan	Feb	Mar	Apr	May	Jun	Jul	Aug	Sept	Oct	Nov	Dec

Situation overview

- The district did not receive any rainfall in during the month.
- Browse and pasture were inadequate, diminishing in quantity and deteriorating in quality in all the livelihood zones.
- Few small and medium sized water pans held some volumes of water in the pastoralist livelihood zones but with their levels reducing fast because of the prevailing high temperatures. The water is expected to sustain pastoralists and their livestock for the next two weeks.
- The average prices of all categories of livestock dropped in all the livelihood zones. Cattle fetched the highest prices, with average prices dropping to Ksh 8,900 from Ksh9,935 in November.
- Livestock body condition and health was rated fair for cattle but remained poor for shoats in all livelihood zones.
- There was inward migration of livestock from Fafi district, especially into Sangailu and Hulugho divisions of the district during the month. Similarly outward migration to Tana Delta District and Lamu was sustained, with satellite herds still camping within Boni forest and Tana Delta areas.
- Significant change was observed in household access to water compared to the preceding month as pastoralist households in Gababa and Abdigure of Masalani division and others in Handaro, Dad Hamun, Egge, Golol belle, Mare, Wakab Harey and Daarow of Sangailu division migrated to other areas within the district in search of water and pasture.
- Livestock access to water became a challenge because of the increased distance from the grazing areas to water sources, which was recorded at 14km on average.
- PPR and CCPP continued to affect shoats, while CBPP and Black quarter anthrax was reported in cattle in agro-pastoralist zones, especially in Hulugho, Sangailu, Kotile, Dololo, Sangole and Bulto Hama.
- Trypanosomiasis remained endemic, with pastoralists spending most of their income in its control.
- The mortality rate of cattle and shoats was recorded at one and 2.2 per cent respectively. The average birth rate for cattle increased during the reporting period from 36 per cent in November to 39 per cent.
- The availability of milk for consumption in all the livelihood zones continued to diminish as most of the lactating herds joined livestock in satellite camps of Witu and Tana Delta.
- The nutrition status of children under fives years worsened during the month under review, with the percentage of those rated as being at risk of malnutrition (based on MUAC<135mm measurement) rising to 17.2 from 16.9 last month. The decline was attributed to decrease in milk yield and ailments resulting from malaria, diarrhoea and Upper Respiratory Tract Infections (URTI). The most affected sentinel sites were Masalani, Aballatiro Koranhindi and Sangailu.
- Generally, the drought situation in the entire district was at alarm stage and worsening.

Current interventions

Non- food interventions

- Construction of water harvesting structures for crop production by Ministry of Agriculture.
- Water hyacinth removal from pans in Hulugho by Water dept/ALRMP.
- Seeds distribution to crop farmers by Ministry of Agriculture.
- Conducting of mobile outreach clinics by MOH/ALRMP.

- Distribution of Unimix and Vitamin A supplementation by MOH/UNICEF.
- Vaccination against CCBP and PPR, already 9,600 cases of CBPP and 9,000 of PPR has been vaccinated.
- Establishment of tree nurseries—a total of 15,000 seedlings are in nurseries.
- Water pan protection measure- ALRMP, Ministry Of Water, Global Concern Fund.
- Cash for work.

Food aid

- Relief food to be provided to vulnerable households.

Recommendations to KFSSG and DSG

- Sensitize the community on nutritional and commercial value of fish.
- Strengthen outreach clinics and organise medical camps with other actors.
- KWS to strengthen measures to curb human/wildlife conflicts.
- PPR and CCPP vaccination campaigns to continue across the district and treatment of other diseases. Continuing vaccination/treatment efforts should be coupled with effective disease surveillance system by the veterinary department.
- Provision of safe drinking water to prevent outbreaks of diarrhea and other communicable diseases.
- Continue to encourage and support crop farming in the agro-pastoralist zones to enhance food security in the district through programmes such as Njaa Marafuku, provision of seeds and other inputs.
- Reducing levels of malnutrition in pregnant and lactating women and children under five years through provision of supplementary food and medical awareness programmes.
- Continue to encourage activities aimed at safe disposal of waste including human faecal matter across the entire district.
- Measures to combat malaria and implement good governance of water.
- Continued water trucking to institutions such as schools, dispensaries and security posts in areas hard hit by water scarcity.
- Departmental heads to continue mainstreaming disaster Risk Reduction measures in planning for development activities in district as agreed in the Malindi Workshop of April 2008.
- Mainstream general natural resource management issues into the district development plans in order to cushion residents against drought and other forms of adversities accompanying climate change.
- De-silting and protection of earth pans/dams in areas identified through participatory manner.
- Reseeding of denuded rangeland and control of undesirable bush species.
- Promote community conservancies.
- Control bush fires as well as illegal logging in the Boni forest.
- Conduct nutritional survey and house hold food security assessment.

1.0 Environmental indicators (stability)

1.1 Rainfall

- The district did not receive any rainfall in any of the livelihood zones during the month, hence the weather condition remained hot and dry.

1.2 Condition of natural vegetation and pasture

- The quality and quantity of pasture and browse diminished virtually in all the livelihood zones due to the effect of the dry spell.

- The inadequate pasture and browse regeneration resulted in diminishing levels of milk in the pastoralist livelihood zones of Abalatiro, Koranhindi, Sangailu, Ijara and the formal/casual employment livelihood zones of Masalani.
- The observed trend was not normal at the time of year and season since browse and pasture were expected to be adequately available. This impacted negatively on food security due to reduced livestock products, i.e. low milk yields.

1.3 Water sources and availability

1.3.1 Use of water sources

- The rains received in during the season, and in particular the preceding in November, caused only a few water pans to impound inadequate quantities of water in the pastoral livelihood zones.
- Water stress was reported in Handaro sentinel site as most of the water pans dried up and the situation was expected to worsen if rains are not received in the next one week.
- The scenario was not normal compared with the same period in previous years as water was expected to be available in all water pans and catchments.
- The persistent poor quality of water in most parts of the district was a matter of concern.

1.3.2 Average distance to water sources

- The average distance to water sources from grazing areas and domestic households was recorded at 25 km and 15km compared to last month's 12km.
- The distance was expected to increase further as the drought situation progresses.
- The trend was not normal for the time of the year as the average distance was expected to be 3km.
- This had a negative impact on food security as too much time was spent in search of water at the expense of other socio-economic activities.

1.4 Emerging issues

1.4.1 Conflicts/ insecurity/human displacement

- Increased human/wildlife conflicts continued to be observed during the month.
- Communities suspected that swelling numbers of wildlife was as a result of displacement from Somalia and encroachment on wildlife habitats and migration routes by increasing human activities in the area.
- High encroachment rates of undesirable bushes on rangelands.
- Increased tsetse fly infestation.
- Increased illegal logging activities and bush fires in Boni forest.
- Displacement of pastoralist households and pressure created on the pasture and water resources by high influx of livestock from Ijara into Lamu and Tana Delta Districts were already causing disputes and raising suspicion. Hence conflicts were looming over natural resource use in the rich triangle.

1.4.2 Migration

- Most of the Livestock stayed within satellite camps of the dry season grazing areas inside the Boni forest and parts of Lamu district, notably, around Witu division, and lower Tana River basin.
- Livestock migration into the district from the neighboring district of Fafi was reported, especially into the pastoralist livelihood zones of Sangailu and Hulugho.

1.5 Implications on food security

- The above conditions were expected to negatively affect food security situation.

2.0. Rural economy indicators (food availability)

2.1 Livestock production

2.1.1 Livestock body condition

- The livestock body condition and health status was poor for all categories in all livelihood zones.
- The decline was a result of insufficient pasture and browse, while others succumbed to diseases and inadequate feeding.
- Outbreak of CBPP in Sangailu sentinel site and cases of PPR reported in pastoral livelihood zone also contributed to the poor body condition. In addition trypanomiasis remained as endemic as ever.
- Livestock production in terms of milk yields dropped.
- Tsetse fly infestation remained a challenge to pastoralist since treatment and veterinary services were exorbitantly priced. This was further compounded by low income of the pastoralist households.
- The trend was not normal when compared with same period of previous years where the body condition and production of livestock was better.
- This had a negative impact on household food security.

2.1.2 Livestock diseases

The prevalent diseases affecting livestock in all the livelihoods were as follows;

- Cattle: LSD, CBPP, Trypanosomiasis and black quarter anthrax.
- Sheep: Helminthiasis, sheep enterotoxaemia, pulpy kidney disease,
- Goats: CCPP, Helminthiasis, Trips,PPR

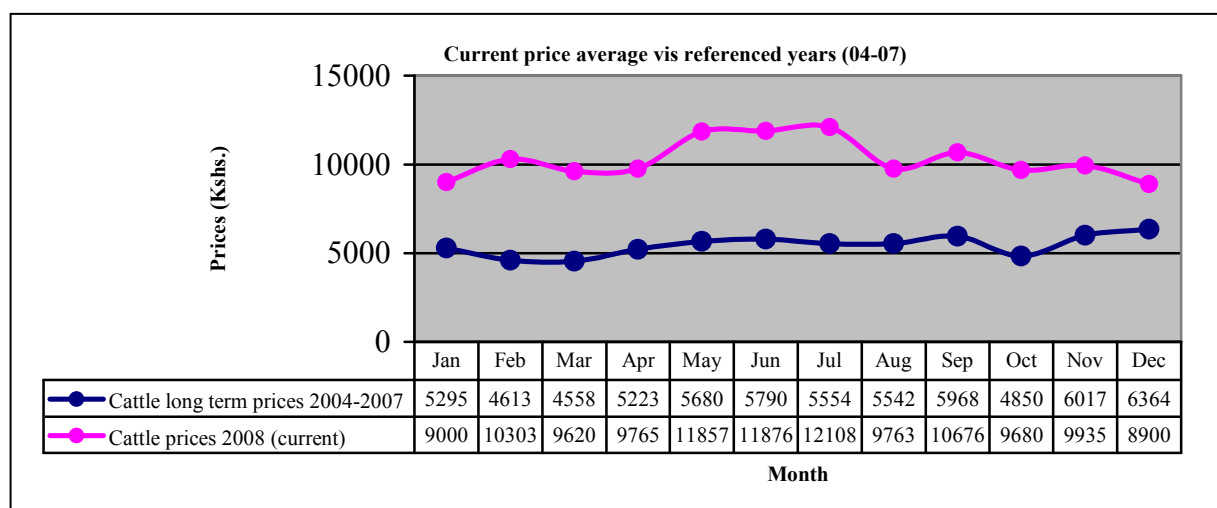
2.1.3 Milk production

- Milk yield reduced drastically and was recorded at 28 per cent, which was slightly lower than that of the preceding month and was attributed to the effects of the dry spell.
- The reduced milk production affected the household food security since the pastoralists mostly depend on milk for consumption and cash.

3.0 Access to food

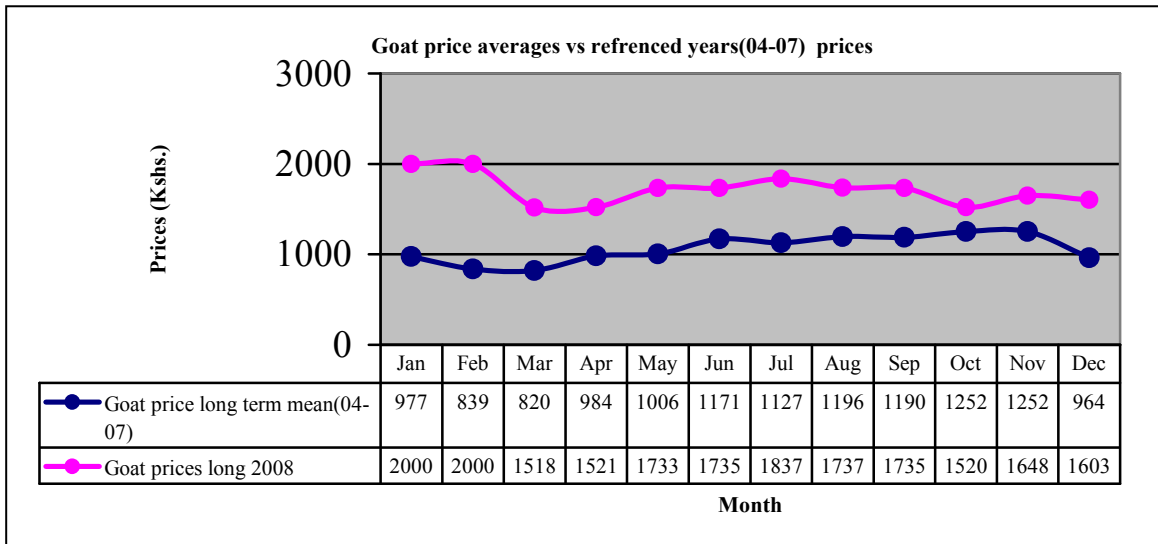
3.1. Livestock marketing

3.1.1 Cattle prices



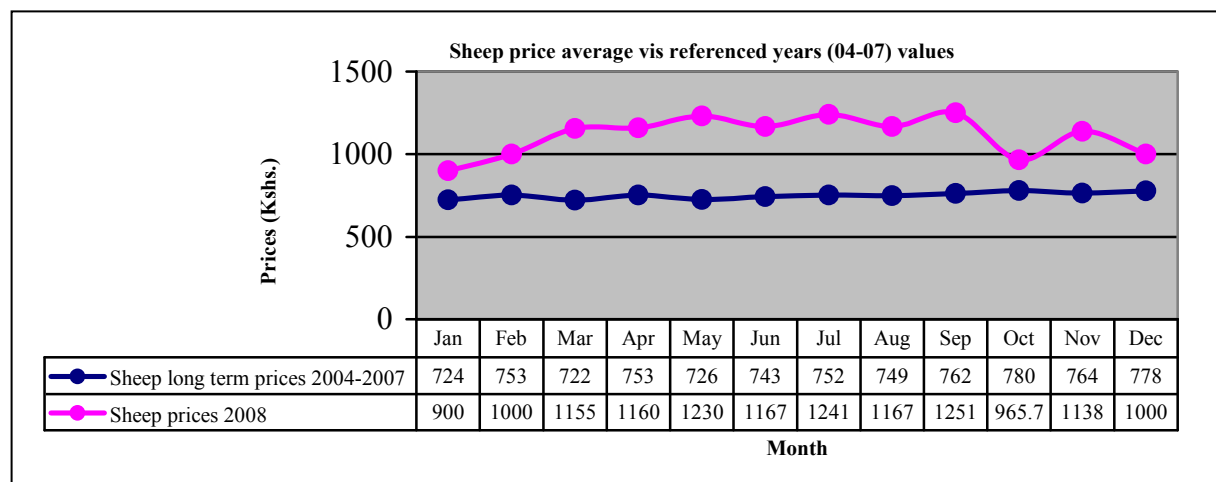
- Cattle prices depreciated Kshs 9,935 in November to Kshs 8,900 in December.
- The situation is fairly stable as compared to established long term mean prices of Kshs 6364.
- The price was higher than the Ksh 6,364 recorded in the same period of the reference (04-07).

3.1.2 Goat prices



- Average goat prices depreciated to Ksh1, 603 from Ksh1, 648.
- The price was higher than the reference year's Ksh964.
- The prices were above normal as compared to long term averages prices were low and had a negative impact on food security.

3.1.3 Sheep prices



• T

he prices of sheep dropped from Ksh1, 138 to Ksh1, 000.

- The price was higher than Ksh778 recorded in the same period of the reference (04-07).
- The declining situation between November and December had negative impact on household food security.

3.2 Livestock sales

- The rate of livestock sales generally had decreased when compared to last reporting period for all categories of livestock.
- This was not normal trend and had negative impact on household food security, and could be attributed to lack of market and reduced body conditions as a result of the prevailing dry spell.

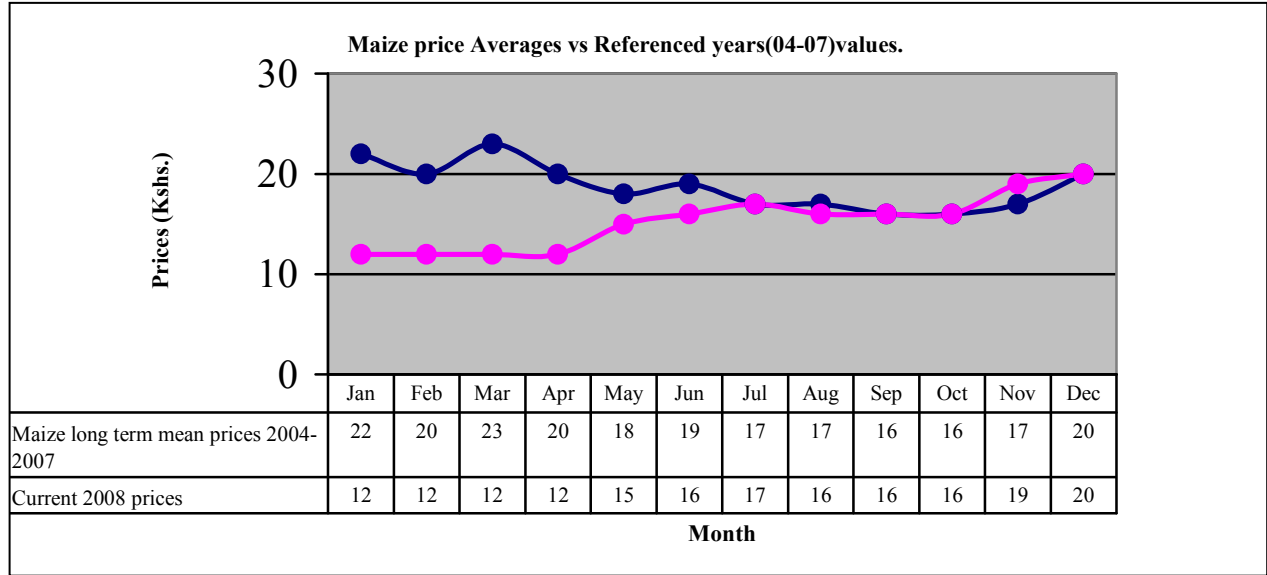
3.3 Milk consumption

- The availability of milk for consumption in all the sentinel sites has reduced because of the effects of the dry spell and prevailing diseases.
- This had negative impact on household food security since only 5-8% of children under five could access milk.

3.4 Crop prices

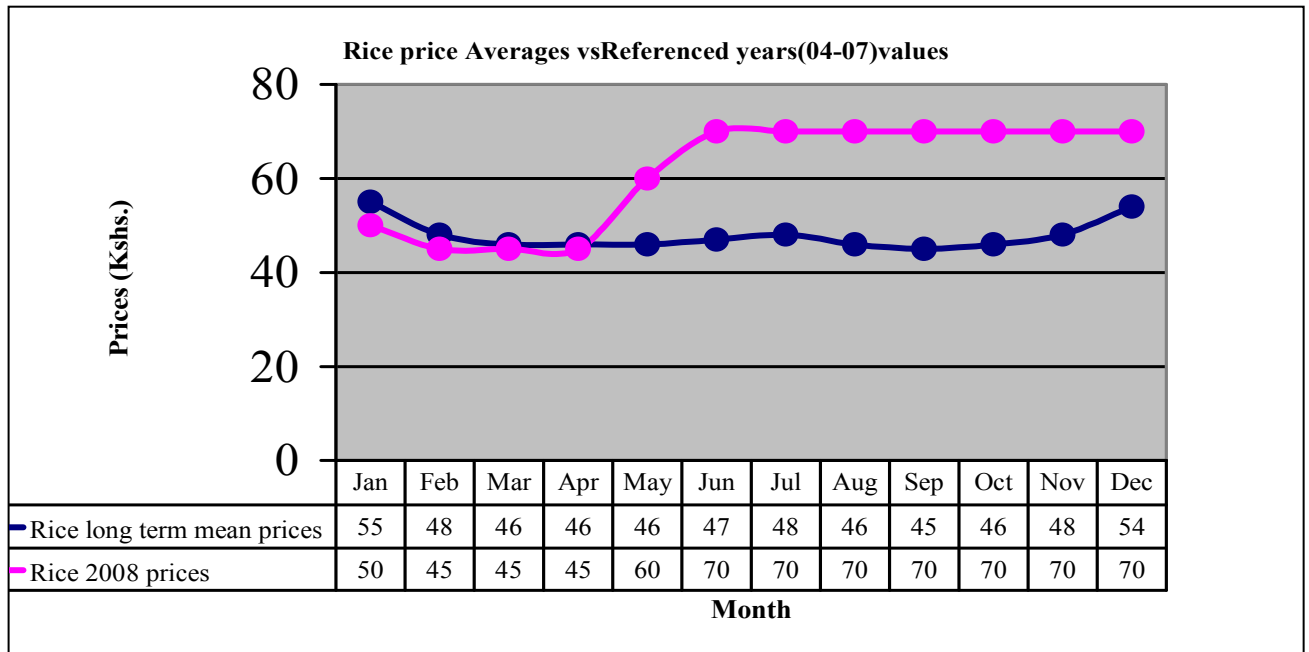
3.4.1 Maize prices

- The average price of maize continued rising in all the sentinel sites.
- The average price was Ksh 20 per kilo compared to Ksh 19 recorded in November.
- The trend was not normal for the time of the year as the prices were expected drop.
- The observed trend had a negative impact on food security.
- The escalating prices were attributed to crop failure in the main grain basket of Kenya due to post-election violence, subsequent successive rainfall failures and high transportation costs.



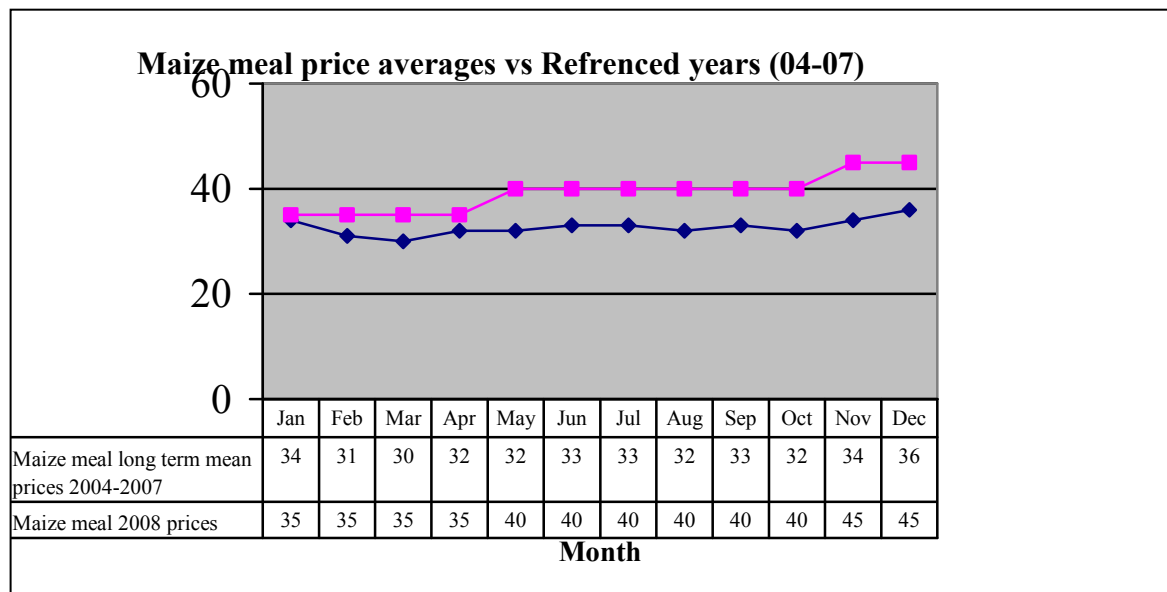
3.4.2 Rice prices

- The average price of rice remained stable at Ksh 70 per kilo.
- However, the price was still high and may be attributed to the high cost of transportation caused by increased fuel prices.
- This was much higher compared to the Ksh 54 recorded during the same period of the reference year (04-07).
- The trend was not normal as the prices were expected to be lower.



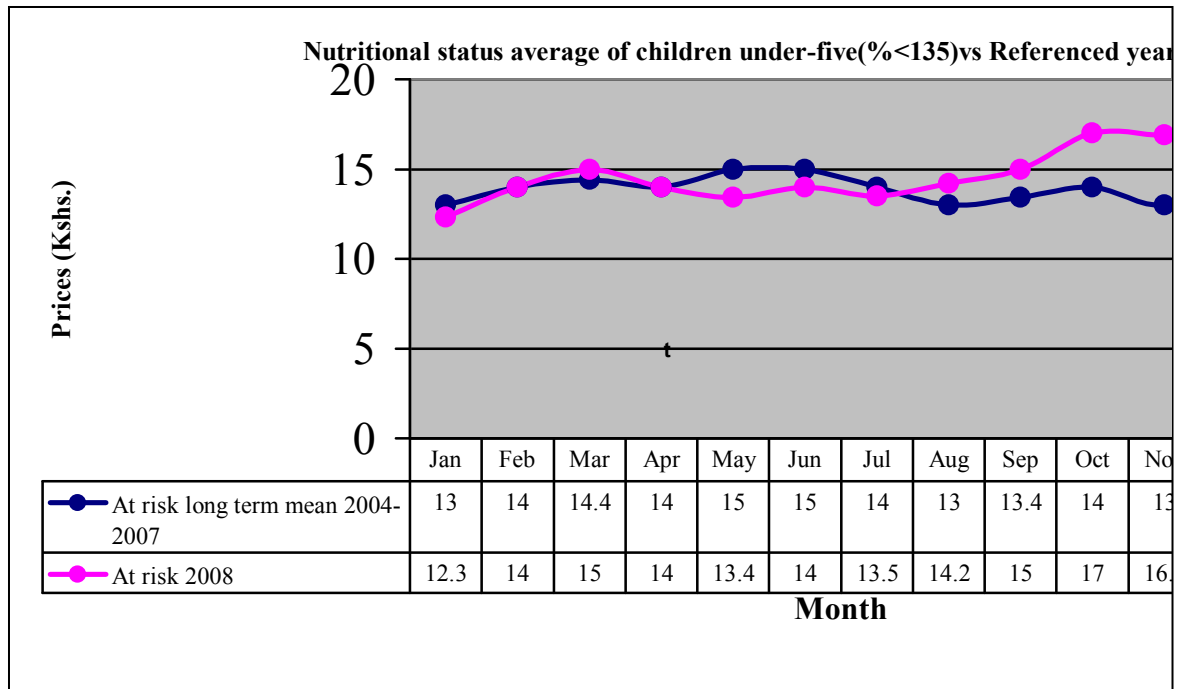
3.4.3 Posho (Sifted maize meal) prices

- The average price of sifted maize meal stood at Ksh 45 during the month under review.
- This was much higher compared to the Ksh 36 recorded during the same period of the reference year (04-07).
- The trend was not normal for the time of the year since the prices were supposed to be lower than what was recorded.
- This had a negative impact on household food security.



4.0 Human welfare indicators (Utilisation of food)

4.1. Nutrition status



- The nutrition status of children under five years worsened during the month under review.
- The percentage of those rated as being at risk of malnutrition (based on MUAC<135mm measurement) rising to 17.2 from 16.9 last month.
- The decline was attributed to decrease in milk yield and ailments resulting from malaria, diarrhoea and Upper Respiratory Tract Infections (URTI).
- The trend was not normal and was caused by the food security situation triggered by the on set of the dry spell.
- The pastoralist and agro-pastoralist livelihood zone of Abalatiro, Korahindi, Handaro and Sangailu recorded the highest rates at 37 per cent.

4.2 Human Health

- No alarming disease outbreaks were reported.
- However, malaria and upper respiratory tract infections were reported, though at manageable levels.

4.3 Flagged Areas (Affected Areas)

- Pastoralist and agro-pastoralist livelihood zones of Khoranhidi, Handaro, Sangailu, Ijara and Abalatiro areas were most affected.

5.0 Current interventions

5.1 Non- food interventions

- Construction of water harvesting structures for crop production by Ministry of Agriculture.
- Water hyacinth removal from pans in Hulugho by Water dept/ALRMP.
- Seeds distribution to crop farmers by Ministry of Agriculture.
- Conducting of mobile outreach clinics by MOH/ALRMP.
- Distribution of Unimix and Vitamin A supplementation by MOH/UNICEF.
- Vaccination against CCBP and PPR, already 9,600 cases of CBPP and 9,000 of PPR has been vaccinated.
- Establishment of tree nurseries—a total of 15,000 seedlings are in nurseries.
- Water pan protection measure- ALRMP, Ministry Of Water, Global Concern Fund.
- Cash for work.

5.2 Food aid

- Relief food to be provided to vulnerable households.

5.3 Coping strategies

Among the coping measures adopted during the month were;

- Collection and sale of bush products, including honey and Aloe extracts.
- Herding and other casual work.
- Sales of quarry products.
- Petty trade.

6.0 Recommendations

- Disease surveillance should be sustained by veterinary department and other stakeholders to contain any disease outbreaks. All stakeholders to support vaccination through the Vet department to contain any would be outbreaks.
Action: Vet department, ALRMP11, Womankind and Oxfam GB.
- The MOH should strengthen and sustain disease surveillance to avert increase in malaria incidences. Rural health facilities to be stocked with sufficient drugs for easy access by pastoralists. Anti-malarial campaigns should also be strengthened.
Action: MOH, DPHO and CBOs.
- Agricultural extension services should be strengthened by DAO.
- Impeding conflicts over the three mile strip along the Tana River to be resolved by the concerned authorities. *Action :District Peace Committees, Local Authorities and the DSCs.*
- Control measures on wildlife menace to be put in place.- *KWS, Local Authority, IPAD, Conservation groups, Provincial Administration, MPs.*