



**OFFICE OF THE PRIME MINISTER
MINISTRY OF STATE FOR THE DEVELOPMENT OF NORTHERN KENYA AND OTHER ARID LANDS
ARID LANDS RESOURCE MANAGEMENT PROJECT II**

DROUGHT MONTHLY BULLETIN, DECEMBER 2008

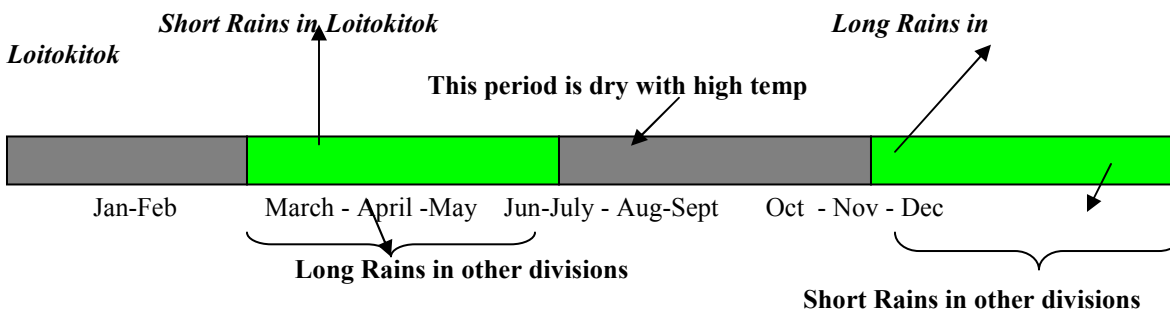
Kajiado and Loitokitok districts

Warning stages



Livelihood Zone	Warning Stage	Trend
Pastoral-All Species	Alarm	Declining
Agro Pastoral	Alarm	Declining
Casual/Waged Labour/Business /Trade	Alert	Declining
Mixed Farming	Alarm	Declining
District	Alarm	Declining

SEASONAL CALENDAR



Situation overview

- No rainfall was recorded in most parts of Loitokitok and Kajiado districts and dry and hot weather conditions prevailed in most parts. The short rains, which were below average and scattered, came late and stopped abruptly by the close of November.
- Water availability and accessibility for livestock, agriculture and domestic use was poor across all livelihoods.
- Strategic dry season grazing boreholes and shallow wells were the main water sources for livestock and domestic use. All temporary water sources (dams and pans) were dry.
- The distance to water and pasture increased owing to poor rains.
- Livestock body condition was fair to poor for all species both in Loitokitok and Kajiado.
- Livestock prices, which were on upward trend, dropped drastically due to low demand as most farmers anticipated livestock decimation. Most farmers restock during this time of the year but this did not happen.
- Average cattle prices declined by 8.7 per cent from Ksh10,423 to Ksh8,864 and goat prices by 24 per cent from Ksh1,600 to Ksh1,404 between November and December.
- National vaccination campaign against *Peste des petits ruminants* (PPR) was ongoing and in the second phase covering the six divisions of Kajiado district.
- Crop performance during the season (OND) was dismal owing to erratic and spatially distributed rains that were below normal, especially at Sompet, Empiron, most parts of Rombo and Entarara Locations. Nkama and Kikelelwa received erratic showers. Maize was at knee height, while beans were flowering. The agro pastoral areas of Kajiado and Loitokitok was characterised by total crop failure.
- Purchase of cereals for home consumption was on upward trend due to declining availability and accessibility of milk at rural household level.
- Food prices (maize and beans) were relatively high compared to long term average. Maize, beans and posho average price were Ksh 35, Ksh 80 and Ksh 40 respectively. Most households in the crop growing areas depleted their food stocks.
- The nutrition status of children under 5 years was within the accepted seasonal ranges. The number of children rated as being at the risk of malnutrition (based on the Mid Upper Arm Circumference -MUAC < 135mm) increased by 0.2 per cent from 9 per cent in November to 9.2 per cent.
- Food security prospects remained precarious in the two districts. The most affected divisions were Central, Magadi, Mashuru and Namanga in Kajiado district. Parts of Ngong and Isinya were equally bad. The pastoral areas of Lenkisim, Mbirikani, Rombo and Lower Kuku in Loitokitok were at 'Alarm' stage.

DSG recommendations

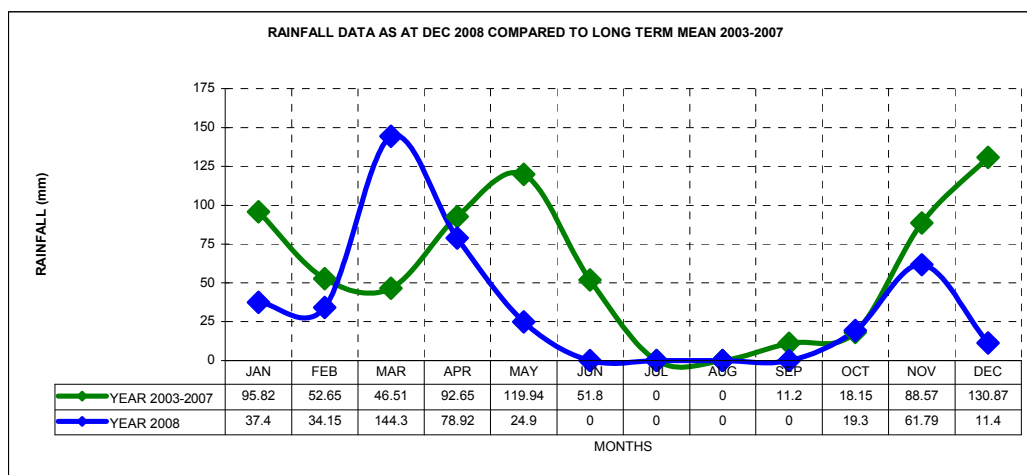
- Rapid food security assessment to be conducted in Loitokitok and Kajiado district.
- Close monitoring of the food and security situation in Kajiado and Loitokitok districts through ALRMP early warning system.
- Cross-sectoral interventions are required to support the recovery process, in the event that the short rains are not sustained through the end of the season.

Current interventions

- Monitoring of drought and food security situation (ALRMP early warning system).
- Mop up/repeat vaccination of livestock against PPR area and community awareness (ALRMP, NIA, MPIDO, MAAP and Vet Aid) - ongoing.
- Conflict and consultative meeting – Musenke, Olkiramatian and Oldonyonyukie – Magadi.
- Rehabilitation of irrigation infrastructure in Loitokitok by NIA and JICA.
- Community Contingency planning (in Meto, Lorngosua and Maparasha locations in Namanga) – ALRMP/DMI/World Vision Osiligi).
- Excavation of Oiti Murandawa pan- ongoing.
- Drilling and equipping of Naserian shallow well (ALRMP/MAAP)- completed.
- Livelihood support community trainings.
- GoK relief food aid – 1,000 bags (90kgs) of maize (DC Loitokitok)- distribution in December 2008, and 1,500 bags (90kgs) of maize, 30 bags (50kgs) of beans and 411 cartons of Nutropap (District Commissioner, Kajiado) – distribution ongoing.
- Piloting of upland rice (Nerica 4) – training and trials in Nguruman in Magadi (Mwea Irrigation/DAO/ALRMP).

1.0 Environmental indicators (stability)

1.1 Rainfall



Source: ALRMP sample area data stations

- Dry and hot weather condition prevailed in most parts of Loitokitok and Kajiado.

- No rainfall was recorded in most areas.
- The observed trend was below normal for the month due to poor rainfall distribution.
- Poor performance of the short rains had negative implications on food security.

1.2 Condition of natural vegetation and pasture

- Quantity and quality of pasture was fair to poor across all livelihood zones.
- Browse condition was fair in most areas, while pasture regeneration stopped and dried hastily when the rains stopped prematurely. The most affected divisions were Central, Magadi, Mashuru and Namanga in Kajiado district. Parts of North and Central Keekonyokie in Ngong and Isinya were equally bad. The pastoral areas of Lenkisim, Mbirikani, Rombo and Lower Kuku in Loitokitok were at ‘Alarm’ stage.
- Due to poor pasture development, zero-grazed dairy cattle were using dry maize Stover and purchased hay.
- Pasture scarcity in these areas was occasioned by insufficient and intermittent rainfall, invasion of pasture by *ipomoea ssp* weed and high concentration of wildlife in areas with little pasture.
- The observed condition was far much below normal. The above trend had negative implications on food security.

1.2.1 Distance to grazing areas

- Return distances to grazing areas ranged from 8kms to 15kms in most pastoral areas and was expected to increase.
- The observed situation was below normal.

1.3 Water availability and accessibility

1.3.1 Water sources

- Water availability and accessibility for livestock, agriculture and domestic use was poor across all livelihoods. Strategic dry season grazing boreholes and shallow wells were the main water sources for livestock and domestic use. All temporary water sources (dams and pans) were dry.
- The observed situation at the time of the year was below normal. On a normal year, temporary water sources are usually recharged.
- The observed situation had negative implications on food security.

Table 2: Water sources and percentage of household using them, compared to a normal situation.

Water source	Boreholes& Shallow wells	Rivers & springs	pipelines	Dams &Pans
% of households depending on the source	70%	10	15%	5
% of households that depend on the source normally	10%	10%	5%	75%

Table 3: Average return distances to water sources, compared to a normal situation

	Boreholes& Shallow wells	Dams and Pans	springs	pipelines
Average Kms to the source	15 Kms	-	15 Kms	15Kms
Normal Kms to the source	3 Kms	3Kms	3Kms	3 Kms

1.3.2 Household access to water

- The average distance to water sources was 8km in areas that received rainfall and 15kms in dry areas.
- Return time for fetching water for domestic use ranged between 2-6 hours. However, for areas that received rainfall, the return time reduced tremendously.

1.3.3 Livestock access

- Livestock access to water was on the downward trend as most water pans and dams dried up.
- The distance from grazing points to water points ranged from 8 -20 Kms, which was above normal season ranges.
- Livestock bordering Amboseli National Park watered within the park.
- Most swamps in Loitokitok recharged but water stress was evident in Mbirikani and Lenkisim.
- Mashuru, Central and Magadi in Kajiado also experienced water stress.

1.4 Emerging issues

- Increasing incidences of livestock deaths associated with ECF as most livestock moved to dry season areas which have high tick challenge.
- Watering fee at dry season strategic boreholes soared to Ksh 20-40 per cow and Ksh 20 per shoaat.
- High food prices impacted negatively on purchasing power of pastoralists.
- Crowding of livestock and wildlife at water sources.
- Human/wildlife conflicts in the irrigation areas.
- Poor crop performance in the rain-fed crop growing areas of Namanga, Mashuru and Central division associated with water stress.

2.0 Rural economy indicators (food availability)

2.1 Livestock production

2.1.1 Livestock body condition

- Livestock (cattle) maintained fair to poor body condition. This was mainly attributed to poor pasture and water availability in most parts of the two districts.
- Livestock performance in terms of productivity was low and declining compared to the previous month.
- This was attributed to insufficient forage and water, long trekking distances to water and pasture and livestock diseases such as CBPP and tick-borne diseases.
- The livestock (cattle) body condition was below normal as good body condition was expected at the time of the year.
- The observed trend had negative implications on food security as livestock in poor body condition fetched low prices.

2.1.2 Livestock Health

- Livestock maintained fair to good health condition during the month.
- The most common livestock diseases were tick-borne disease, pox in small stock and CCPP in goats.

- Trypanosomiasis in cattle was reported in Nguruman, Magadi division and Chyullu and Loitokitok.

2.1.3 Milk production

- The number of households where “Everyone” could access milk decreased while those registering “None” was on an upward trend.
- The above trend in milk consumption was attributed to decline in milk production as a result of insufficient forage and water, long trekking distances to water and pasture and migration of livestock to dry season grazing areas.
- The trends in milk consumption had negative implications on food security and nutrition status of children below five years.

2.14 Livestock migration

- There was increased migration (internal and external) of cattle during the month, to areas that received moderate rainfall. Browse for small stock was available in most areas.
- Over 65 per cent of satellite and milking herds were still in the dry season grazing areas including Kiambu escarpment, Ngurumani escarpment, outskirts of Nairobi, conservation areas, areas adjacent to National parks, private ranches and Chyullu hills.

Migration pattern in the month of December 2008

Division	From	To		Reasons
		Internal Migration	External Migration	
Isinya	Kitengela, Olturoto, Empuyiankat, Sholinke.		Close to 50% of satellite herd have migrated to Mlolongo, Embakasi and Thika	In search of pasture
Central	Nkoile, Olonulugum, Enkorika, Sajiloni, Toroka	Oldoinyonyokie group ranch.	some to Namanga, Tanzania and Nairobi	In search of pasture
Mashuru	Osilalei, Imaroro, Mashuru	Moved to private farms in Konza		In search of pasture
Namanga	Kumpa, Meto, Ipartimaro	Oldoinyorok and Tanzania		In search of pasture
Ngong	Ewuaso,	Mosiro	Kiambu Escarpment and Narok	In search of pasture
Magadi	Olkiramatian, Olkeri, Magadi	Ngurumani, Entesopia, Ngurumani Escarpment, Conservation areas	Tanzania	In search of pasture
Loitokitok	Mbirikani, Lower kuku, Lenkisim and Kimana	Close to 65% of satellite and milking herd have migrated to Chyullu Hills, Tsavo East and West .N.park, Irrigation schemes,		In search of pasture

2.2 Crop production

2.2.1 Timeliness and status of crop production activities

- Crop performance was dismal owing to erratic and spatially distributed rains that were below normal, especially in Sompet, Empiron, most parts of Rombo and Entarara Location. Nkama and Kikelelwa received erratic showers.

- The rain-fed agro pastoral areas of Kajiado and Loitokitok experienced total crop failure.
- Maize was at knee high while beans were flowering.
- Overall crop performance across the two districts was poor.

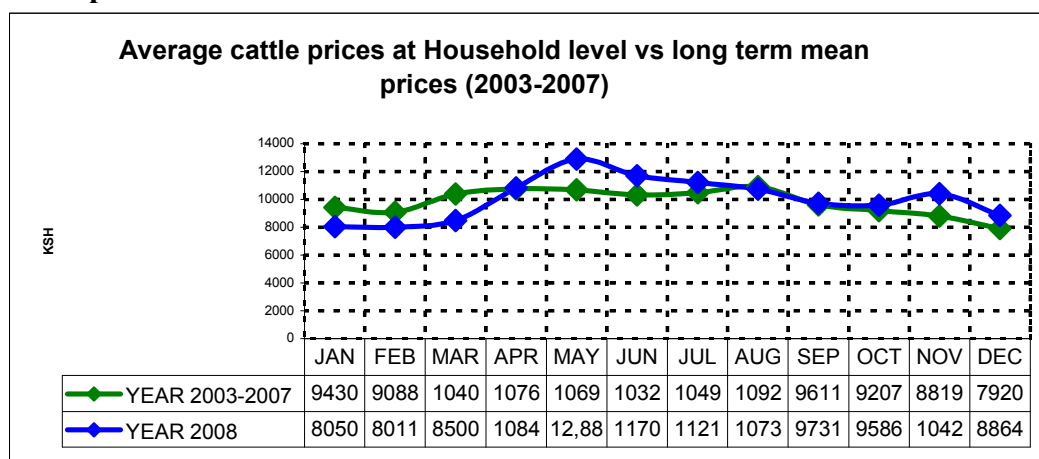
2.2.2 Implications on food security

- Food security situation in the district remain precarious. Households continue to depend on cereal and pulses purchases constituting close to 70% of household food needs.
- High cereal prices and general increase in food crop prices has negative implication on food security at household level.
- Milk yields remained low and availability to households constrained due to internal and external migration in search of water and pasture. The observed milk trend has negative implication on food security.

3.0 Access to food

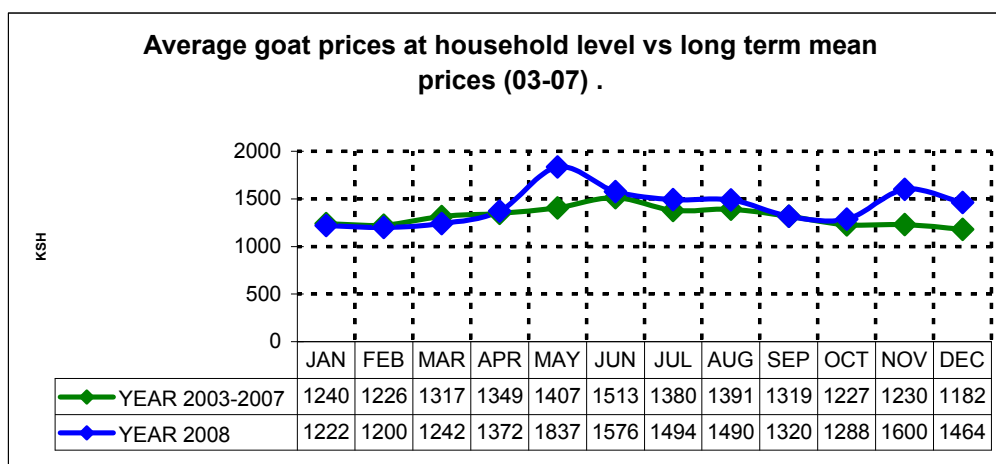
3.1 Livestock marketing

3.1.1 Cattle prices



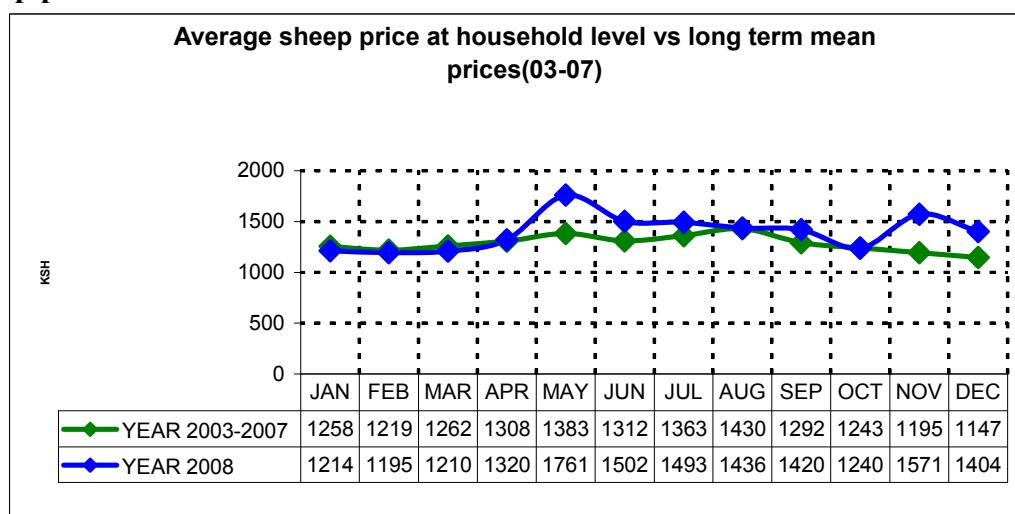
- Average cattle prices declined by 14.9 per cent, from Ksh 10,423 in November to Ksh 8,864.
- The price was above the long term average and could be attributed to forces of demand and supply in the markets (less supply) and declining body condition.
- The observed price trend was normal for the month.

3.1.2 Goats prices



- Average goat prices declined by 8.5 per cent from Ksh1,600 in November to Ksh 1,464.

3.1.3 Sheep prices



- The district average price of sheep declined by 10.6 per cent, from Ksh 1,571 in November to Ksh 1,404.
- The price was above the long term average and was attributed to forces of demand and supply in the markets (less supply) and not improved body condition.
- High food prices (Maize, beans and maize flour) negated the gains made.

3.1.4 Milk consumption

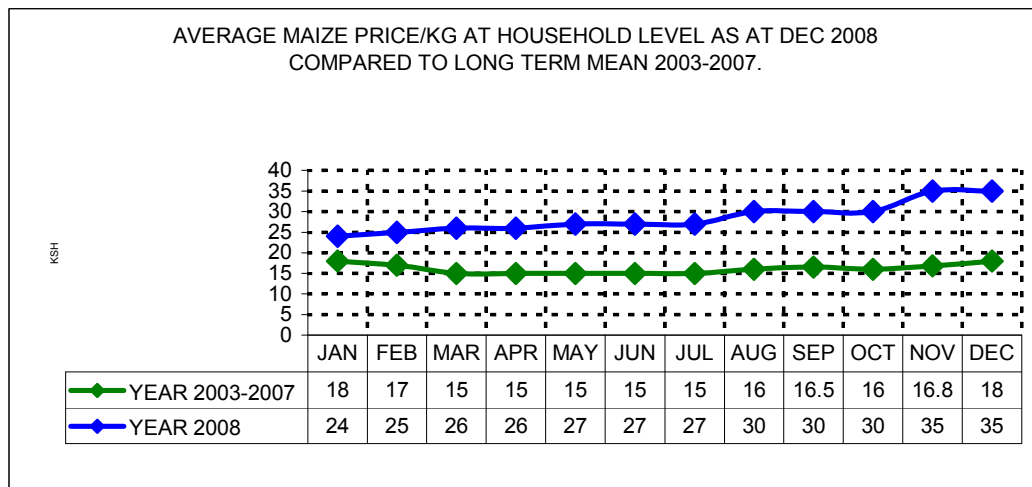
- Milk yields remained low and availability to households constrained due to internal and external migration in search of water and pasture.
- The observed milk trend had negative implications on food security.
- Most households in the pastoral households depended on purchases of cereals and pulses, constituting 60-70 per cent of households' diet.

3.2 Implications on food security

- The decrease in livestock prices had negative implications on food security at household level.
- Decline in livestock prices, abnormal maize prices, combined with rising prices of other food and non-food commodities, negated the gains of improved prices which were above long term mean.

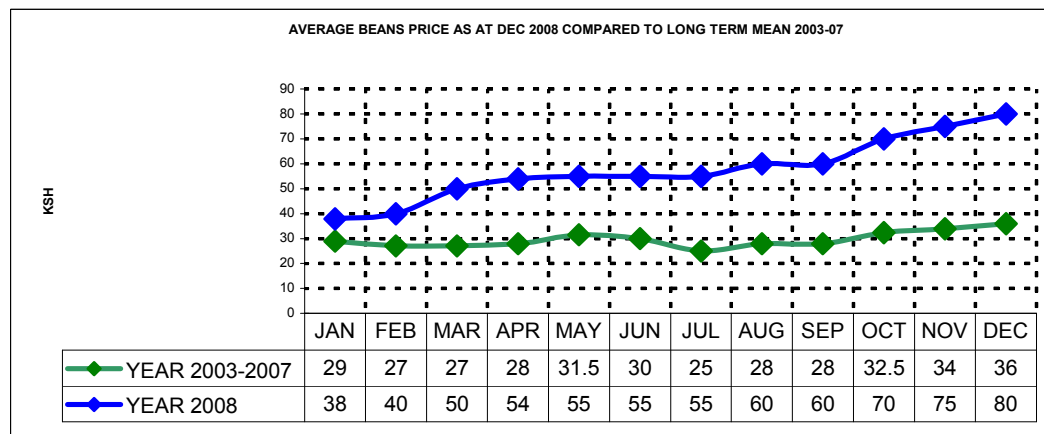
3.3 Crop prices

3.3.1 Maize prices



- The average maize price stabilised at Ksh 35 per kilo during the month under review.
- However, the price was expected to rise since no harvests are expected in the next few months.
- The two districts depended on imports from the bordering districts and Tanzania through Namanga and Loitokitok border points.

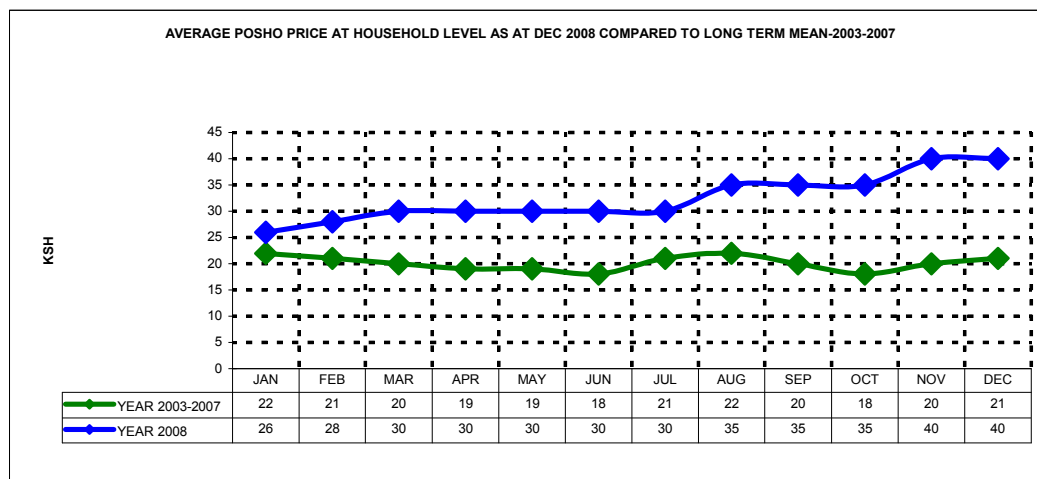
3.3.2 Beans prices



- The average beans price increased by 6.6 per cent from Ksh 75 per kilo in November to Ksh 80.

- Residents of the two districts depended on imports from the bordering districts and Tanzania through Namanga and Loitokitok border points.

3.3.3 Posho prices



- The average posho price stabilised at Ksh 40 per kilo during the month.
- The price was above normal compared to the long term mean of Ksh 21 per kilo.
- The price increase was attributed to scarcity of the produce due 2-3 successive seasons of crop failure across the district and limited supply from external sources.
- High cereal prices and general increase in food crop prices had a negative implication on food security at household level.

3.4 Income

3.4.1 Crop income

- There was no crop income in rain-fed crop growing areas as crops failed in most areas.
- Total crop failure was evident in all agro-pastoral areas of the two districts.
- Farmers in the irrigation areas gained from the sale of farm produce such as tomatoes, cabbages, kales, onions and Asian vegetables from irrigation schemes in Magadi and Loitokitok.
- However, crop production in these areas was constrained by diseases, pests and low water levels.

3.4.2 Livestock income

- Internal migration of livestock constrained livestock marketing activities, as most herds were returning to wet season grazing areas.
- Livestock prices were on an upward trend owing to improved body condition and pastoralists holding back their stock, causing low supply in markets.

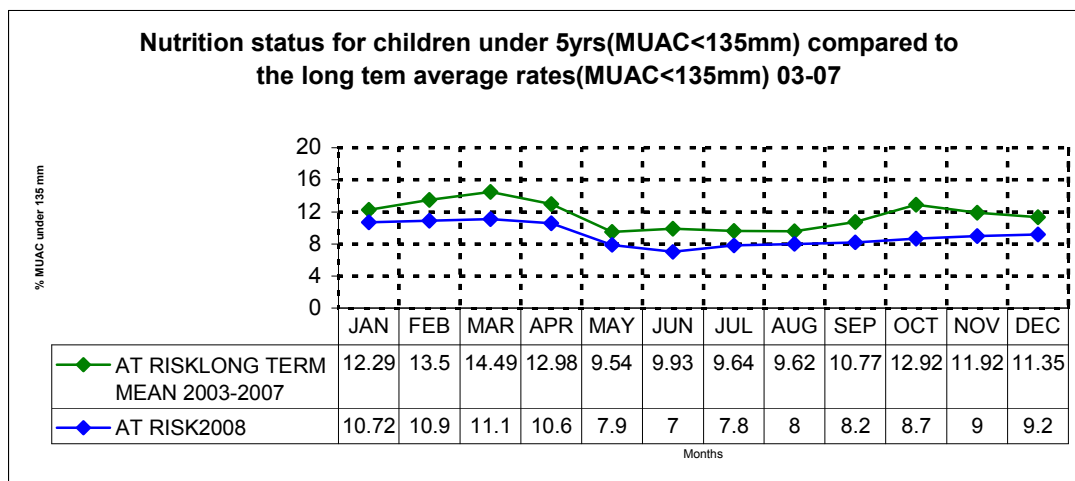
3.4.3 Terms of trade for pastoralists

- Pastoralists' terms of trade improved compared to the previous month as the prices were above the long term average.
- However, increased food negated the gains made.

- Declining livestock prices had a negative implication on household food security.

4.0 Welfare indicators (utilisation of food)

4.1 Nutrition status



- The nutrition status of children under 5 years was within the accepted seasonal ranges.
- The number of children rated as being at the risk of malnutrition (based on the Mid Upper Arm Circumference -MUAC < 135mm) increased by 0.2 per cent from 9 per cent in November to 9.2 per cent.
- High rates were attributed to unavailability of milk at rural household level in the last three months.
- The trend was expected to worsen due to unavailability of milk at household level.

4.2 Human health

- The most common diseases reported during the month were malaria, diarrhoea and respiratory tract infections (RTIs).
- Malaria was common in the pastoral areas.

5.0 Current interventions

- Monitoring of drought and food security situation (ALRMP early warning system).
- Mop up/repeat vaccination of livestock against PPR area and community awareness (ALRMP, NIA, MPIDO, MAAP and Vet Aid) - ongoing.
- Conflict and consultative meeting – Musenke, Olkiramatian and Oldonyonyukie – Magadi.
- Rehabilitation of irrigation infrastructure in Loitokitok by NIA and JICA.
- Community Contingency planning (in Meto, Lorngosua and Maparasha locations in Namanga) – ALRMP/DMI/World Vision Osiligi).
- Excavation of Oiti Murandawa pan- ongoing.
- Drilling and equipping of Naserian shallow well (ALRMP/MAAP)- completed.

- Livelihood support community trainings.
- GoK relief food aid – 1,000 bags (90kgs) of maize (DC Loitokitok)- distribution in December 2008, and 1,500 bags (90kgs) of maize, 30 bags (50kgs) of beans and 411 cartons of Nutropap (District Commissioner, Kajiado) – distribution ongoing.
- Piloting of upland rice (Nerica 4) – training and trials in Nguruman in Magadi (Mwea Irrigation/DAO/ALRMP).

5.1 Other drought coping strategies

- Purchase of food on credit.
- Livestock sales to purchase food.
- Petty trade (women).
- Purchase of livestock feeds.
- Remittances.
- Migration to dry season grazing areas.
- Charcoal burning and sand harvesting

6.0 DSG recommendations (Kajiado on 6/12/2008 and Loitokitok on 9/12/2008)

- Close monitoring of the food and security situation in Kajiado and Loitokitok districts through early warning system.
- Conduct food security rapid assessment in January 2009 to determine food security situation.
- Cross-sectoral interventions are required to support the recovery process in the event that the short rains are not sustained through the end of the season.
- School Feeding Programme: upscaling up of budgetary allocation to facilitate smooth operation (transportation of food) of RSFP in the district.