

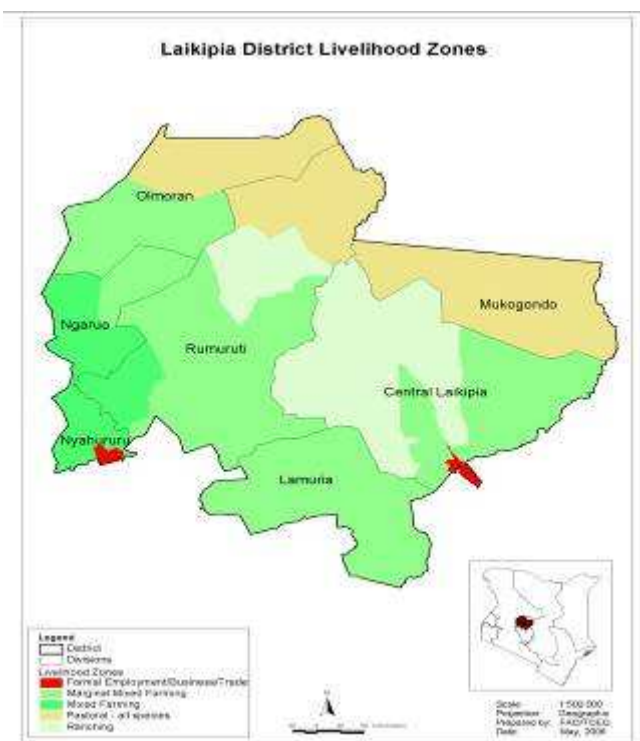


**OFFICE OF THE PRIME MINISTER
MINISTRY OF STATE FOR THE DEVELOPMENT OF NORTHERN KENYA AND OTHER ARID LANDS
ARID LANDS RESOURCE MANAGEMENT PROJECT II**

DROUGHT MONTHLY BULLETIN, DECEMBER 2008

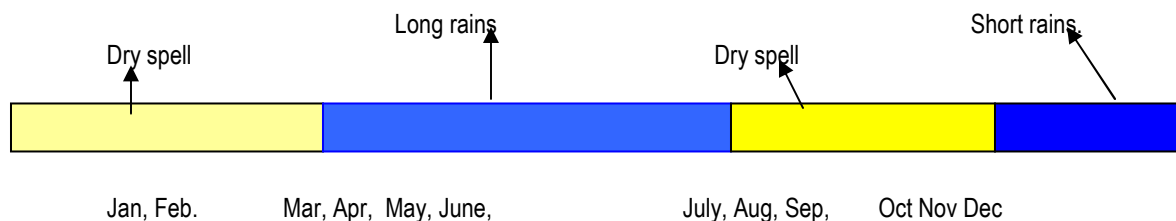
Laikipia East, West and North districts

Warning Stages



Livelihood Zone	Warning stage	Trend
Pastoral All Species	Alarm	Worsening
Agro – Pastoral	Alert	Worsening
Mixed Farming	Alert	Worsening
Marginal Mixed Farming	Alert	Worsening

SEASONAL CALENDAR



Situation Overview

- The district was mainly windy and hot during the day and cold at night. Only light showers were recorded in Lamuria (46.2mm) and parts of Nyahururu divisions.
- The high temperature increased the rate of evaporation, which led to the drying up of most of the seasonal rivers.
- Most of the dams and pans dried up, especially in parts of Rumuruti and Mukogodo, increasing the walking distance to water sources..
- Pasture and crops started deteriorating.
- Crops in the marginal farms started wilting, while wheat in the Laikipia East failed when the short rains did not continue as expected.
- Most households exhausted their food stocks, especially in Laikipia East.
- Livestock prices were still poor, especially for cattle, and were expected to worsen as their body condition deteriorates due to worsening pastures. However, the prices of goats improved slightly owing to the December festivities.
- Livestock markets were still closed in Laikipia West following a foot and mouth disease outbreak.
- Relief food distribution under the Emergency Operation (EMOP) was still ongoing to the affected population.
- The internally displaced persons in Rumuruti are in need of food assistance.
- Laikipia West was still insecure as armed gangs terrorised motorists and people, especially around Rumuruti.
- Incidences of human/wildlife conflict reduced as most elephants moved to Isiolo and Samburu district.
- Movement of livestock in Laikipia North was expected to start following failure of the rains.
- The nutrition status of children below five years deteriorated during the month, with the percentage of children rated as being at the risk of malnutrition rising to 12 from 9 in November. This was attributed to the prevailing dry spell, which affected production of milk and vegetables.

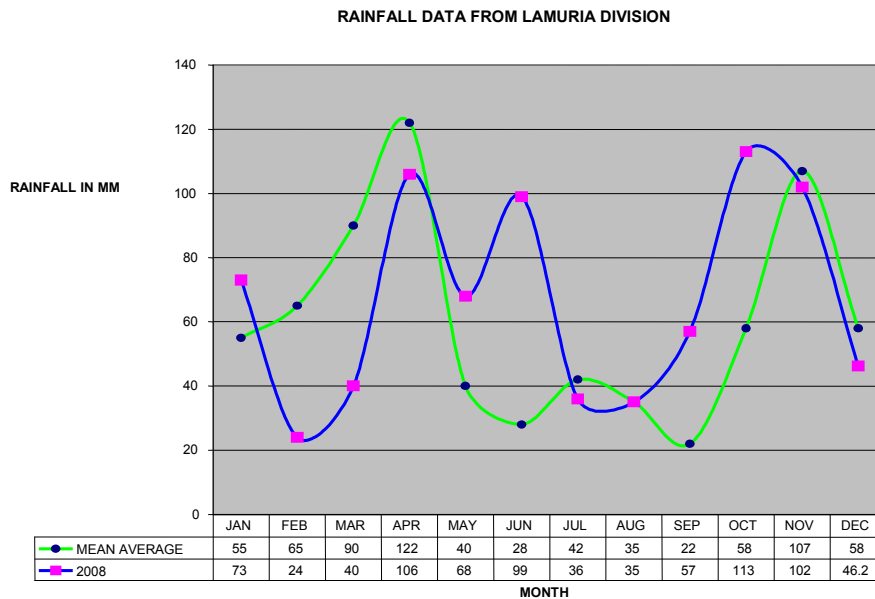
Recommendations to DSG and KFSSG

- Assistance to the IDP (Internally Displaced Persons) in Laikipia West.
- Repair of boreholes as most dams and pans were drying up.
- Survey of areas with highest rates of children at risk of malnutrition in Laikipia East and North need to be carried out, especially Daiga in Laikipia East and Mukogodo divisions in Laikipia North.
- Supplementary feeding for children below five years to be taken into consideration as the situation might worsen.
- Ministry of Livestock to prepare for movement of livestock from north to east for pastures due to the dry spell.
- Provincial Administration needs to boost security in Laikipia West as the situation is worsening.
- Provision of supplementary food for children below five years, especially in Mukogodo and parts of Laikipia East.

1.0 Environmental indicators (Stability)

1.1. Rainfall

- The short rains receded in the districts, apart from minor showers that had no major impact on livestock and agricultural production.
- The minor showers were received in Lamuria and parts of Nyahururu divisions, but the rest of the divisions did not receive any rains.



**Rainfall data provided by (Ewaso Nyiro River Catchment Authority) from Matanya station in Lamuria division. This data does not cover the entire district. Matanya is an Agropastoralists zone but the situation is different in the rest of the livelihood zones.*

1.2. Condition of natural vegetation and pasture

- Due to failure of the short rains in December, the situation changed drastically and pasture started depleting fast.
- This was worsened by the hot and windy weather conditions, which accelerated the rate of evaporation.
- Cattle in the north and parts of Laikipia East faced shortage of fodder and this was expected to lead to migration of livestock towards the Mount Kenya region in search of pasture.

1.3 Water sources and availability

- Most of the seasonal rivers dried up, especially in Mukogodo in Laikipia North and Central divisions of Laikipia East, after the short rains receded.
- Most of the dams and pans in Mukogodo, Lamuria and Rumuruti need to be desilted as the rains in October and November were heavy and deposited a lot of silt. The most affected dams are Dol-dol, and Kijabe in Mukogodo and two dams around Sipili areas.

- Livestock had access to water but repair of boreholes will be required in preparation as dams and pans are expected to dry up as the dry spell continues.

1.4 Emerging issues

1.4.1 Insecurity/ Human-wildlife conflict

- Rumuruti was insecure as armed gangs terrorised residents and motorists along the highway
- Cases of cattle rustling were on the increase, especially in Laikipia East and parts of a Laikipia West.
- There were fewer incidences of human/wildlife conflict in the marginal agriculture zones as most elephants moved to Isiolo and Samburu districts.

1.4.2 Migration/ Human Displacement

- The pastoralists were preparing to start moving as the pasture in Laikipia North was getting depleted.
- The IDP'S in Rumuruti were in need of assistance, especially food stuffs.

2.0 Rural economy indicators (Food availability)

2.1 Livestock production

2.1.1 Livestock body condition

- Livestock body condition started deteriorating, especially cattle, due to shortage of fodder.
- In Mukogodo pasture got depleted and livestock was expected to start moving in search of pasture.
- In Nyahururu and Ngarua, livestock was feeding on maize stokes and their body condition was better compared to the ones from Laikipia East and Laikipia North.

2.1.2 Livestock diseases

- Foot and mouth disease was still prevalent Laikipia West and the entire district was under quarantine.
- The Ministry of Livestock needs to be on the alert for livestock diseases as livestock movement was about to start.
- The second round of PPR vaccination was ongoing in the districts.

2.2 Crop production

2.2.1 Condition of various crop production activities

- Crops in the marginal farms of Laikipia East and Rumuruti division started withering in the farms as the rains receded in December.
- Wheat farmers in Laikipia East were most affected, having already registered crop failure.

2.2.3. Harvests

- Harvests were affected by the failure of the rains in December.

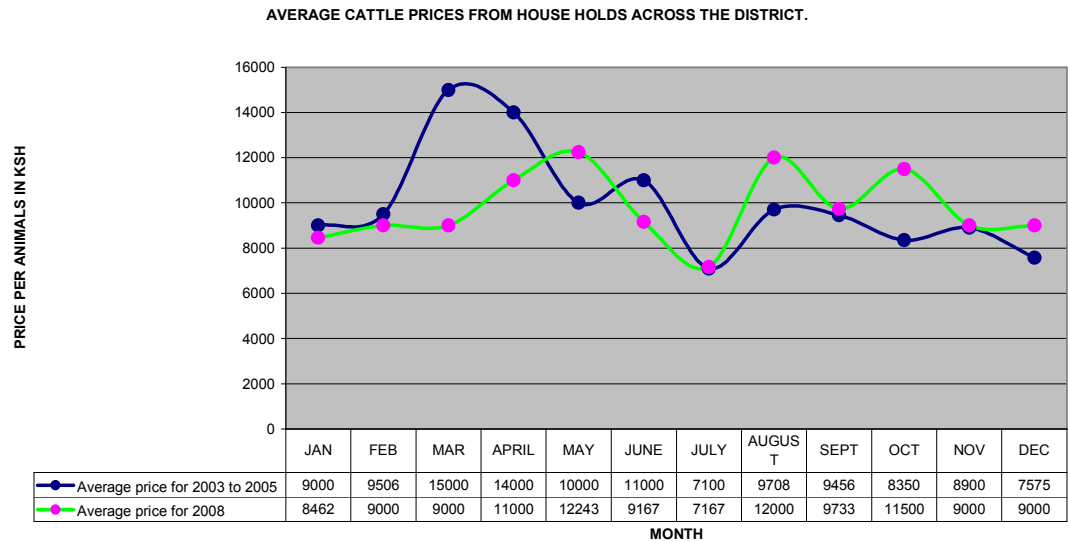
2.3 Implications on food security

- The short rains had no effect on food security as crop failure is expected across the district.
- This will have a very negative impact on food security in the district.

3.0 Access to food

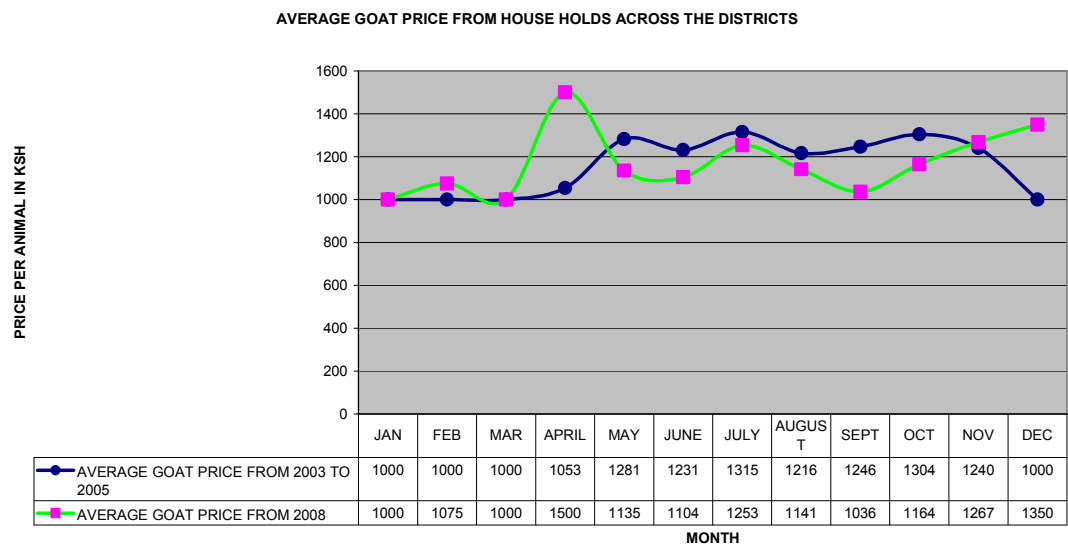
3.1 Livestock marketing

3.1.1 Cattle prices



- The average price of cattle remained stable but was expected to drop soon due to the worsening body condition.
- The average price was Ksh 9,000, same as November.
- Cattle sales worsened due to the closure of the Rumuruti market, which is usually an outlet for the Nakuru and Nyandarua districts.

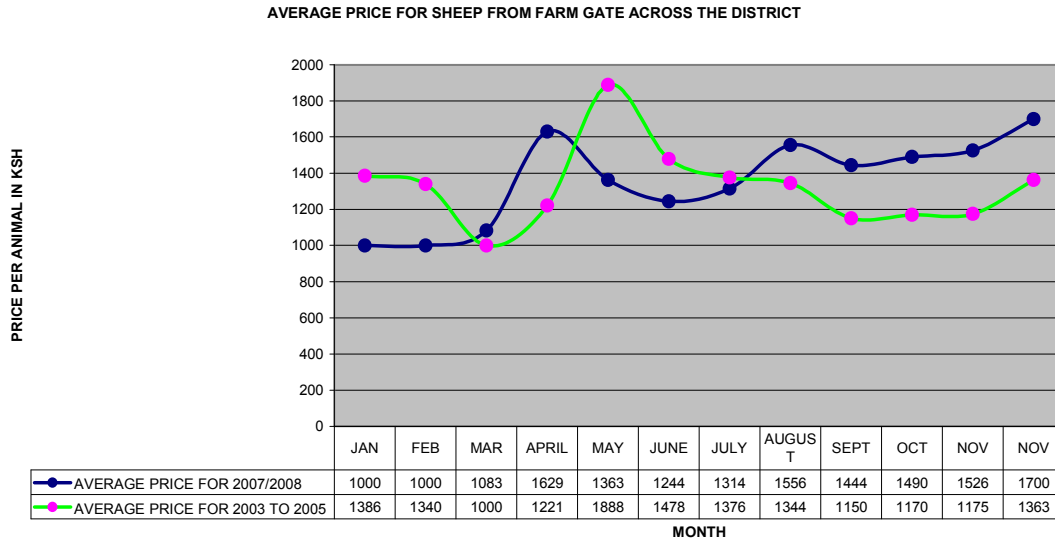
3.1.2 Goat prices



- Goat prices improved slightly due to the December festivities.

- The average price was Ksh 1,350, up from Ksh 1,267 in November.
- Sales in markets in Laikipia North were slightly more as most of the pastoralist stopped selling cattle due to their poor body conditions.

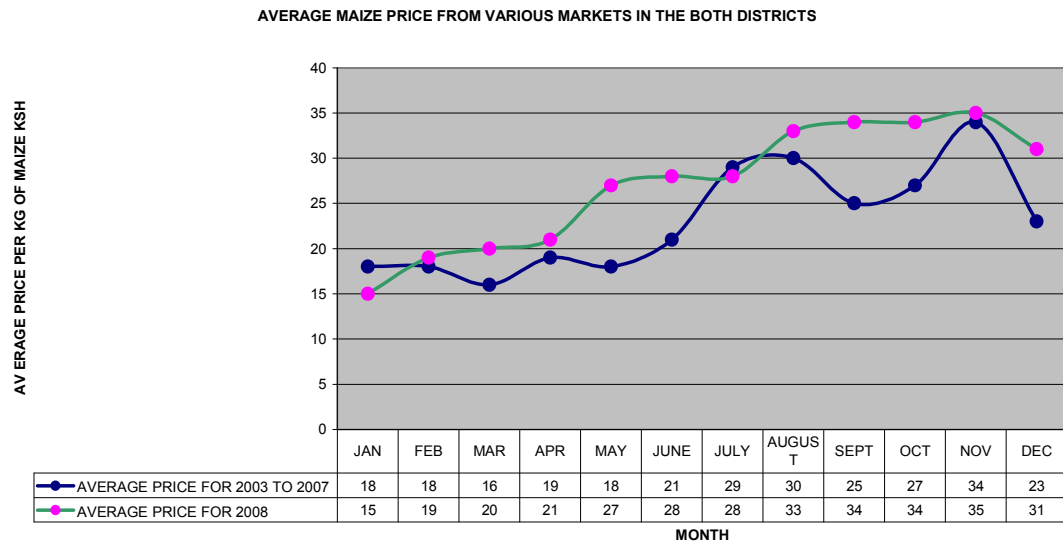
3.1.3 Sheep prices



- The average price of sheep improved due to demand for the December festivals.
- However, the prices may drop due to worsening body condition owing to the dry spell.

3.2 Crop prices

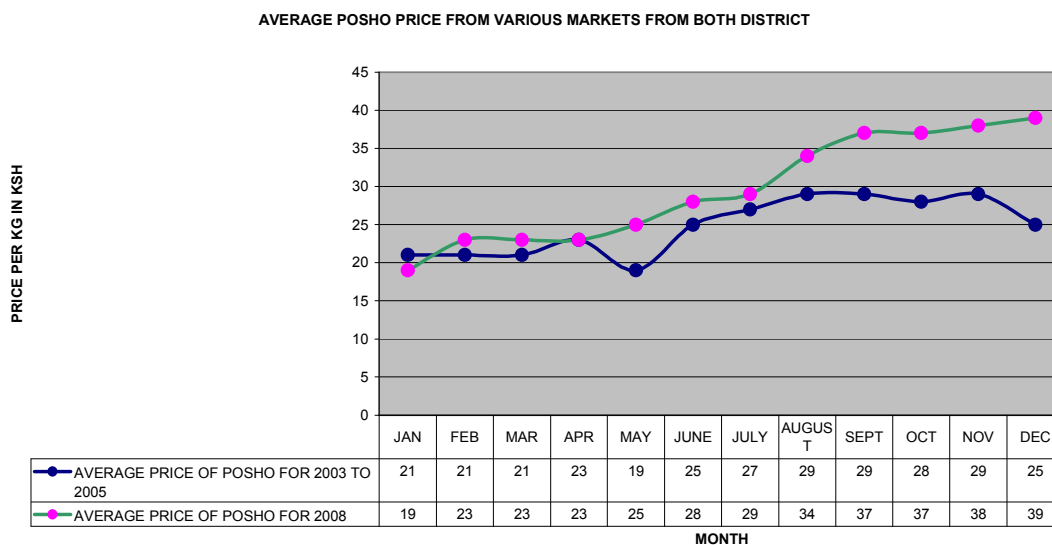
3.2.1 Maize prices



- The average price of maize fell to Ksh31 per kilo from Ksh 35 in November.

- However, the price was higher than the long term mean of Ksh23.
- Following the failure of short rains and crop failure in the marginal agriculture farms, maize will remain scarce and prices could therefore rise..
- The drop was as a result of the Government intervention in maize supply, which made those with stocks to sell them before the cheap maize floods the markets.

3.2.2 Posho (locally milled maize meal) prices



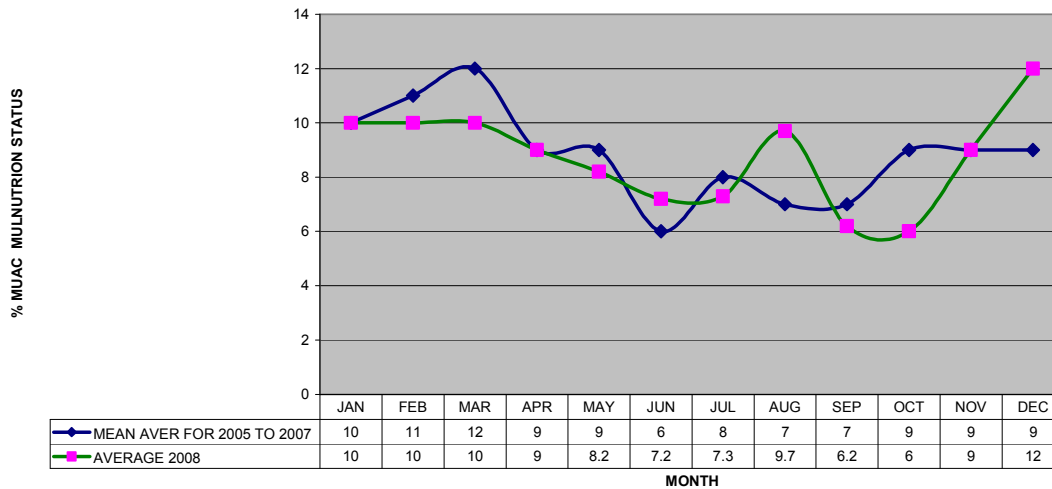
- Posho, unlike maize, was still expensive.
- The average price was Ksh 39 per kilo.
- However the price was expected to drop once the Government subsidized stock gets to the markets.

4.0 Human welfare indicators (Utilisation of food)

4.1 Nutrition Status

Nutrition status of Children of 12-59 months based on Mid Upper Arm Circumference (MUAC<135mm) measurement

AVERAGE MULNOURISHED CHILDREN UNDER 5 YRS ACROSS THE DISTRICTS



- The nutrition status of children below five years deteriorated during the month.
- The percentage of children rated as being at the risk of malnutrition rising to 12 from 9 in November.
- This was attributed to food stress due to high prices. The prevailing dry spell, which affected production of milk and vegetables, also contributed to the decline.

4.2 Human Health

- The most common diseases reported in the month were malaria and respiratory tract infections and these were reported in all the three districts.

5.0 Current interventions

5.1 Food aid

- The districts received food aid from the EMOP (emergency operation) ration of December 2008.
- The food was as follows;
 - Cereals- 140.250 metric tonnes.
 - Pulses -34.250 metric tonnes.
 - Veg oil -46.645 metric tonnes.
 - C.S.B -53.275

Though the food was received, it was not distributed because there was a short fall of the required ration. ie Cereals 301.75 Metric tones, Pulses 8.256 Metric tones.

6.0 Recommendations

- Provision of assistance to the IDP (Internally Displaced Persons) in Laikipia West.
- Repair of boreholes as most dams and pans were drying up.
- Survey of areas with highest rates of children at risk of malnutrition in Laikipia East and North need to be carried out, especially Daiga in Laikipia East and Mukogodo divisions in Laikipia North.

- Supplementary feeding for children below five years to be taken into consideration as the situation might worsen.
- Ministry of Livestock to prepare for movement of livestock from north to east for pastures due to the dry spell.
- Provincial Administration needs to boost the security in the Laikipia West as the situation is worsening.