

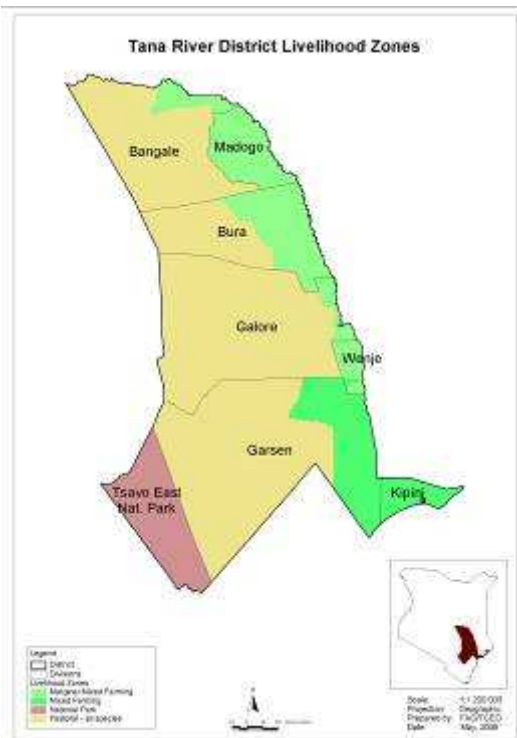


**OFFICE OF THE PRIME MINISTER
MINISTRY OF STATE FOR THE DEVELOPMENT OF NORTHERN KENYA AND OTHER ARID LANDS
ARID LANDS RESOURCE MANAGEMENT PROJECT II**

DROUGHT MONTHLY BULLETIN, DECEMBER 2008

Tana River District

Warning Stages



Livelihood Zone	Stage	Trend
Mixed Farming Zone	Alert	Worsening
Marginal Mixed Framing Zone	Alert/Alarm	Worsening
Pastoral Zone	Alert/Alarm	Worsening
DISTRICT	Alert/Alarm	Worsening

TIME LINE ACTIVITIES

<ul style="list-style-type: none"> Milk yield drops Livestock move towards dry seasons grazing areas 			<ul style="list-style-type: none"> High milk yield Livestock move towards the traditional wet season grazing areas. High Calving and lambing rates. 			<ul style="list-style-type: none"> Low milk availability Livestock move towards the fall back dry seasons grazing areas (riverine and delta) 			<ul style="list-style-type: none"> High Milk yield Livestock move back to the traditional wet season grazing areas. Calving rates increases 		
Short dry spell			Long rains			Long dry spell			Short rains		
Jan	Feb	Mar	Apr	May	Jun	Jul	Aug	Sept	Oct	Nov	Dec
↓ Short rains harvest			↘ Planting/Weeding			↘ Long rains harvest			↘ Planting/weeding		

Situation Overview

- The central part of the district reported some showers during the third decad. However, the southern and northern parts reported negligible amounts of rainfall.
- The water situation begun deteriorating as most of the catchment pools dried up, while the existing pans were stressed by high livestock concentration.
- The condition of natural vegetation was still rated fair. However, it was deteriorating in most parts of the district due to poor rainfall experienced during the short rains.
- The livestock body and health condition was rated fair in almost all parts of the district, though feared to weaken owing to the anticipated drought.
- The prices of almost all livestock species recorded a downward trend compared to the last reporting period.
- There was a general improvement in milk production at the household level compared to last reporting period.
- The child nutritional status based on the MUAC<135mm measurement recorded a worsening trend. The percentage of children under five years categorised as being at risk of malnutrition rose to 15.3 per cent compared to 12.6 last month.
- The food security situation was pointing towards stress as the range resources begun deteriorating, while no meaningful crop production was realised due to below normal rains.
- Fresh clashes erupted in parts of Galole, Bura and Madogo division between the Orma and Wardei clans, where at least four people were reported killed.

Recommendations to DSG/KFSSG

- Enhance contingency plans and preparedness activities in readiness for the anticipated drought spell.
- Security personnel to be deployed in the hot spots to resolve ongoing conflicts and curb anticipated counter attacks. Meanwhile, peace initiatives be enhanced between the warring clans.

Current interventions

Non-food interventions

- Re-diversion of River Tana and brooks management in Tana Delta, where river diversions are rampant, being carried out jointly by ALRMP, Water department and CDF.
- Health immunization campaigns and outreach programmes by the Ministry of Health.
- Food production by use of water harvesting technology currently under pilot in Wayu Duka, Wayu Boro and Chifiri in Galole division being facilitated by the ALRMP-II.
- Range rehabilitation and reseedling programmes in the hinterland areas of Tana River and Tana Delta by Livestock department in collaboration with the ALRMP-II.

- Fodder harvesting and bulking technologies being carried out by Livestock department in collaboration with Arid Lands Resource Management Project.
- Livestock breed improvement programmes by the Livestock department in collaboration with ALRMP-II.
- Conflict management and resolution initiatives amongst the warring communities by the ALRMP, OOP and other stakeholders.
- Rehabilitation of boreholes as a preparedness activity by ALRMP and Water department.

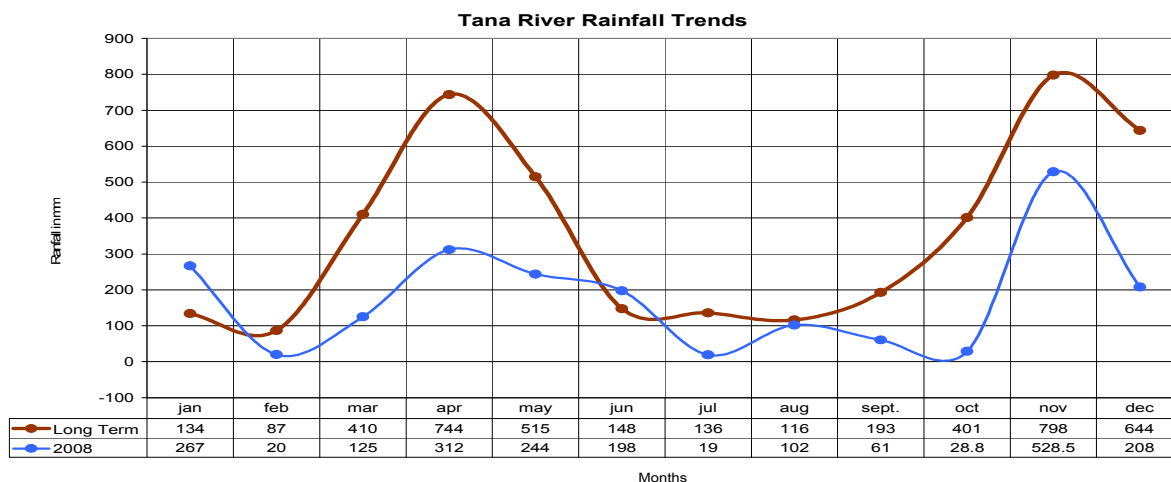
Food aid

- EMOP going in Madogo, Bura, Galole and Wenje and benefiting 41, 579 people.
- Supplementary and therapeutic feeding programmes in hospitals and outreach programmes.
- General food distribution by the GOK to vulnerable families.
- Food for work initiatives by the Wenje parish.

1.0 Environmental indicators (Stability)

1.1 Rainfall

- The central part of the district reported some showers during the third decad of the month. However, the southern and northern parts reported negligible amounts of rainfall.
- Temperatures ranged between 29°C to 32°C during the month.



- The short rains were generally rated below normal and registered very little impact on both the range and crop development.

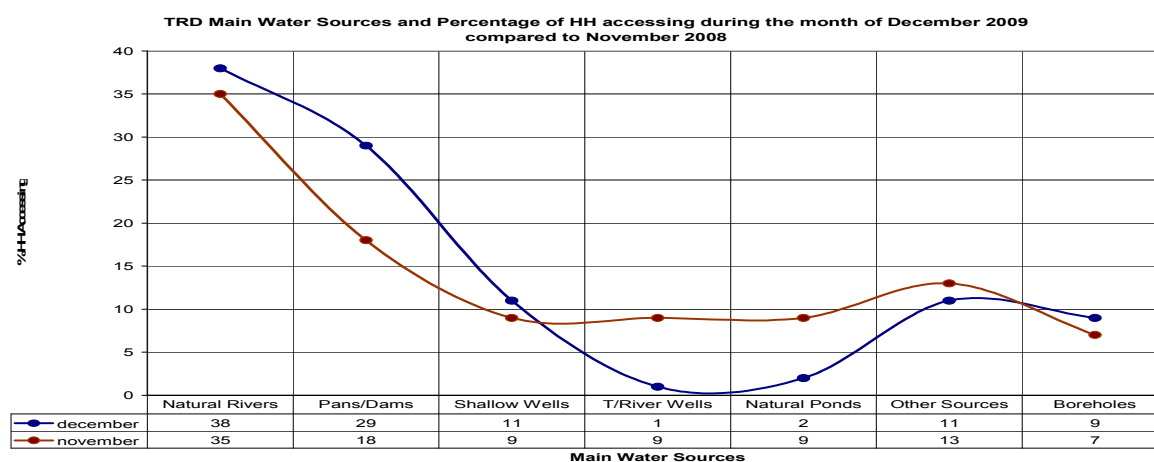
Livelihood Zone	Station	Rainfall in mm
Mixed Farming	• Kipini	• 19.5mm
	• Garsen	• 30.4mm
Marginal Mixed Farming	• Hola	• 15.7mm

Pastoral	<ul style="list-style-type: none"> • Wayu • Bangale 	<ul style="list-style-type: none"> • 140.0mm • 3.0mm
----------	---	--

1.2 Condition of natural vegetation and pasture

- The condition of natural vegetation was still rated fair but deteriorating in most parts of the district due to poor rainfall during the short rains.
- Average distances to grazing areas begun increasing and recorded on average between 10kms – 20kms compared to 7kms – 15kms reported during the last reporting period.

1.3 Water sources and availability



- The water situation begun deteriorating as most of the catchment pools dried up, while the existing water pans were already stressed due to high livestock concentration. If the present climatic conditions persist it may translate into water stress earlier than normal.
- The water sources mainly in use during the month remained the River Tana, pans/dams, shallow wells and the taps in the urban centres.
- Distances to water sources from the households also increased and reported on average between 0.5km and 3.0km.

1.4 Emerging Issues

1.4.1 Insecurity/conflict /human displacement

- Despite peace initiatives being carried out between the warring communities of Wardei and Orma, fresh clashes erupted in parts of Galole, Bura and Madogo division after more than three villages were invaded and counter attacks where at least 4 people were reported killed.

1.4.2. Migration

- Unusual out migration was observed from the conflict hot spots to low insecurity areas of the district.
- However, normal migrations were expected towards the dry season fall back grazing areas as the wet season grazing areas begun getting drier due to the effects of poor short rains..

1.5 Implications on food security

- The pastoral food security situation may continue to worsen as the short rains were rated below normal and registered minimal impact on the range and crop production.

2.0 Rural economy indicators (food availability)

2.1 Livestock production

2.1.1 Livestock body condition

- The livestock body and health conditions was still rated fair.
- However, body stress may be inevitable as the range resources continue to get depleted.

2.1.2. Livestock diseases

- With an exception of isolated cases of CCPP, no major disease outbreaks were reported.

2.1.3. Milk production

- There was a further increase in milk production during the month compared to last reporting period.
- However, the trend may be short lived as the range resources continue to get depleted, thus directly affecting the milk yield.

2.2.0 Crop production

2.2.1 Timeliness and condition of various crop production activities

- Most of the crops planted at the onset of the rains wilted before maturity due to poor rains experienced during the short rains season.

2.2.2 Harvests

- The only crop harvest reported was mangoes in most parts of the marginal mixed farming zone.

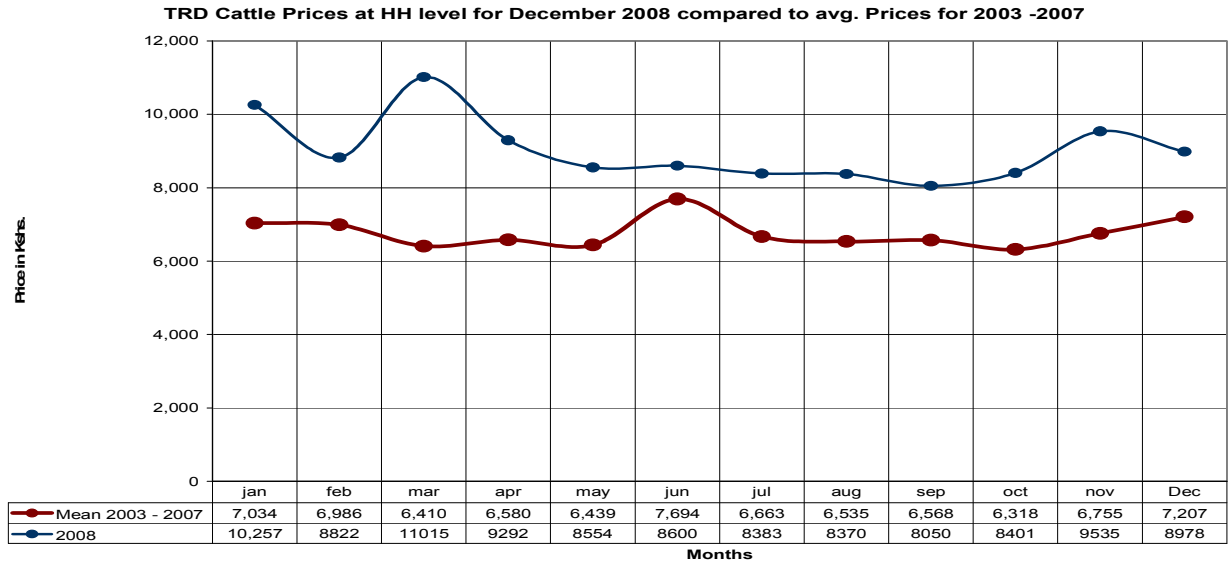
2.2.4 Implications on food security

- Sale of mangoes in the marginal mixed farming zone was expected to slightly reduce the food stress in the area however short-lived as the harvest season was about to end.
- Meanwhile more households were likely to fall in the food insecure category as no meaningful impact was registered from the just-ended short rains in terms of crop and livestock production.

3.0 Access to food

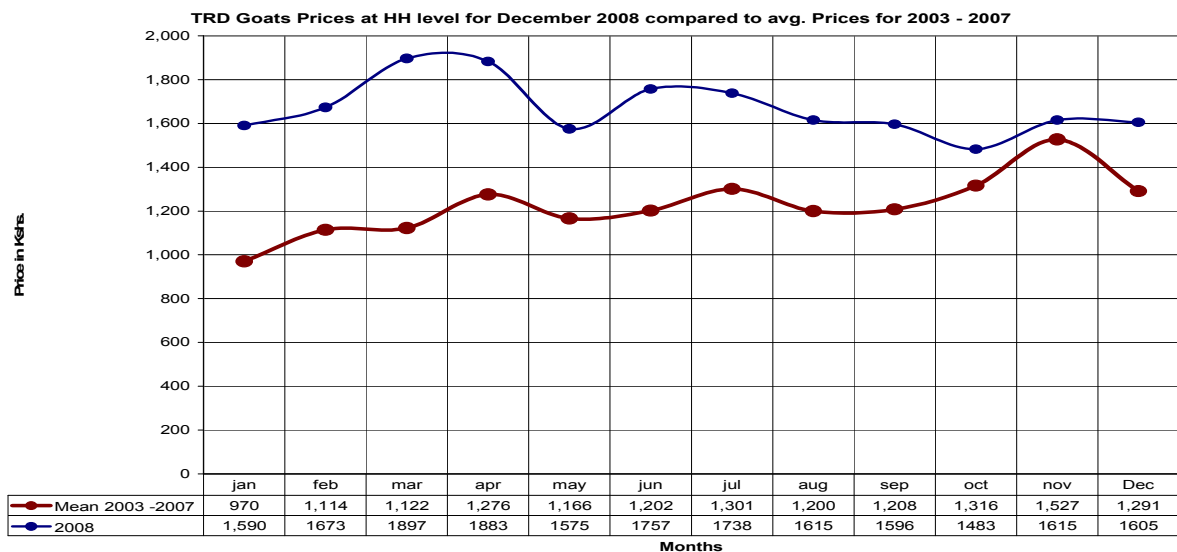
3.1 Livestock marketing

3.1.1 Cattle prices



- The average price of cattle during the month dropped to Ksh8,978 from Ksh9,535 of last month.
- The prices was above the long term seasonal average price of Ksh7, 207 recorded during the period 2003 -2007.
- Low prices were mainly reported in Bangale Madogo and Galole and this was attributed to poor market outlets. However, Garsen and Wenje reported high prices.

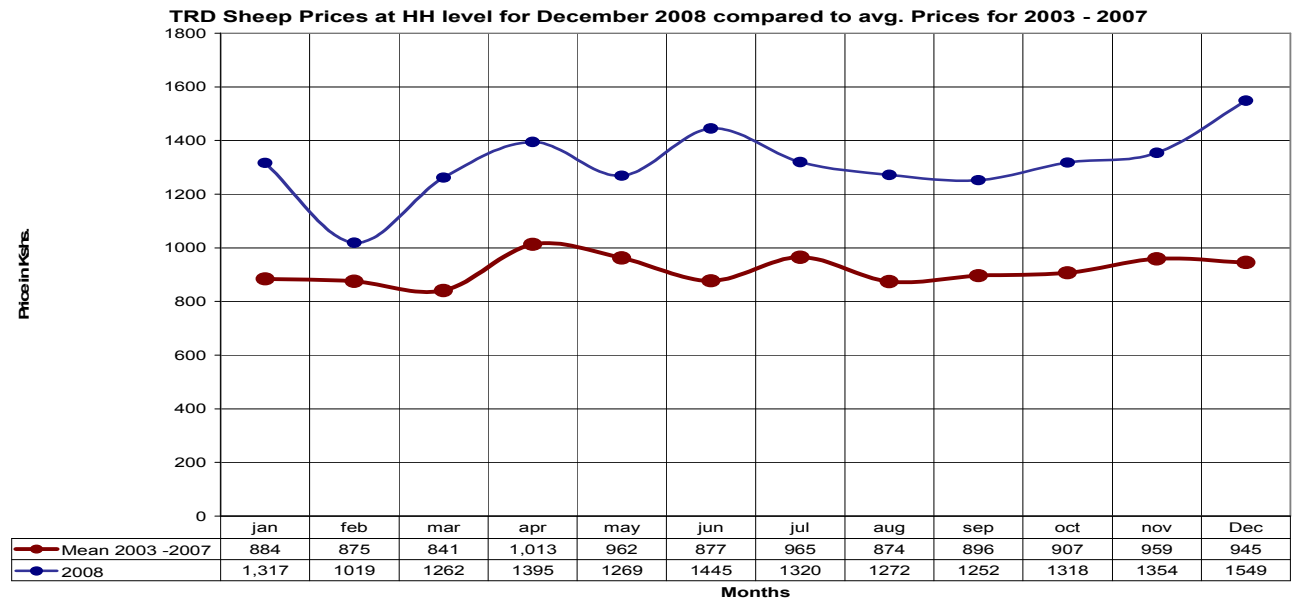
3.1.2 Goat prices



- No significant change was observed in the prices of goats compared to last reporting period.
- However, the prices indicated a downward trend as the average price slightly dropped to Ksh1,605 compared to Ksh1,615 in November.

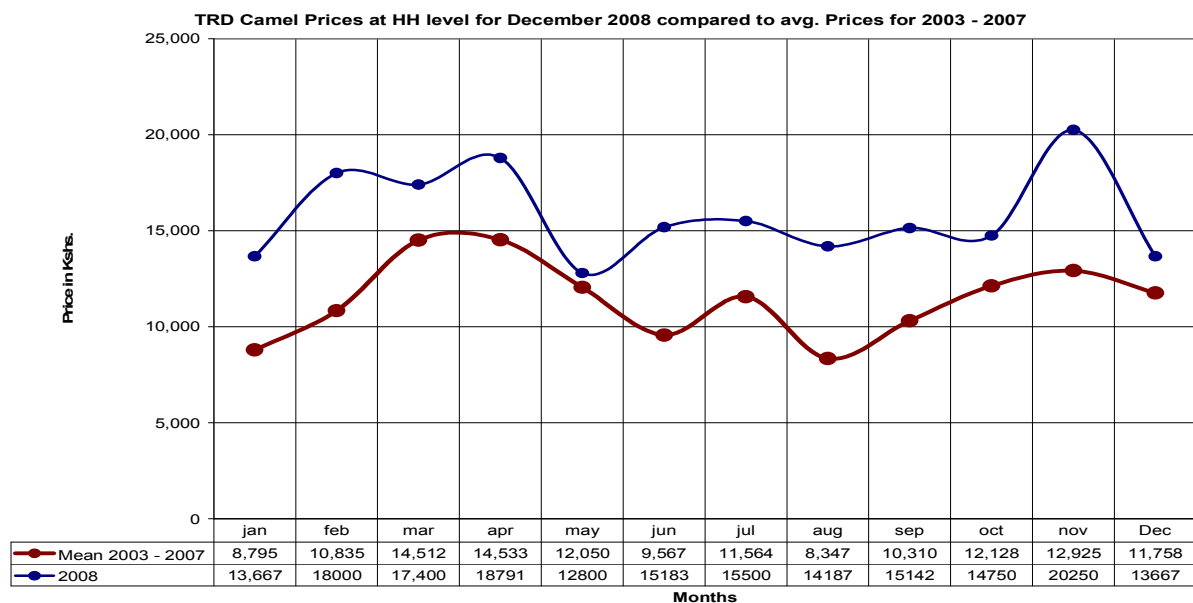
- The price was, however, higher than the long term seasonal average price of Ksh.1,291 recorded during the period 2003 – 2007.
- Drop in prices at the time of the year was not an anticipated situation and may be due to the ongoing quarantine and market closures due to PPR in the northern parts of the district.

3.1.3 Sheep prices



- The price of sheep rose to Ksh1,549 during the month compared to Ksh1,354 in November.
- The price was above the seasonal average price of Ksh959 observed during the period 2003 – 2007.
- Favourable sheep prices may be due to the healthy body conditions.

3.1.4 Camel prices



- Camel prices recorded a decline of about 33 per cent compared to November.
- The average price dropped from Ksh20, 250 to Ksh13, 667.
- The prices were higher than the long term seasonal average price of Ksh11,758 recorded during the period 2003 – 2007.
- The prices were still expected to be favourable due to the healthy body conditions and the market conditions.

3.2 Livestock sales

- There was a general rise in the sales rate of both cattle and sheep.
- However, the sales rate for goats dropped slightly. This may be due to effects of the quarantine earlier reported.

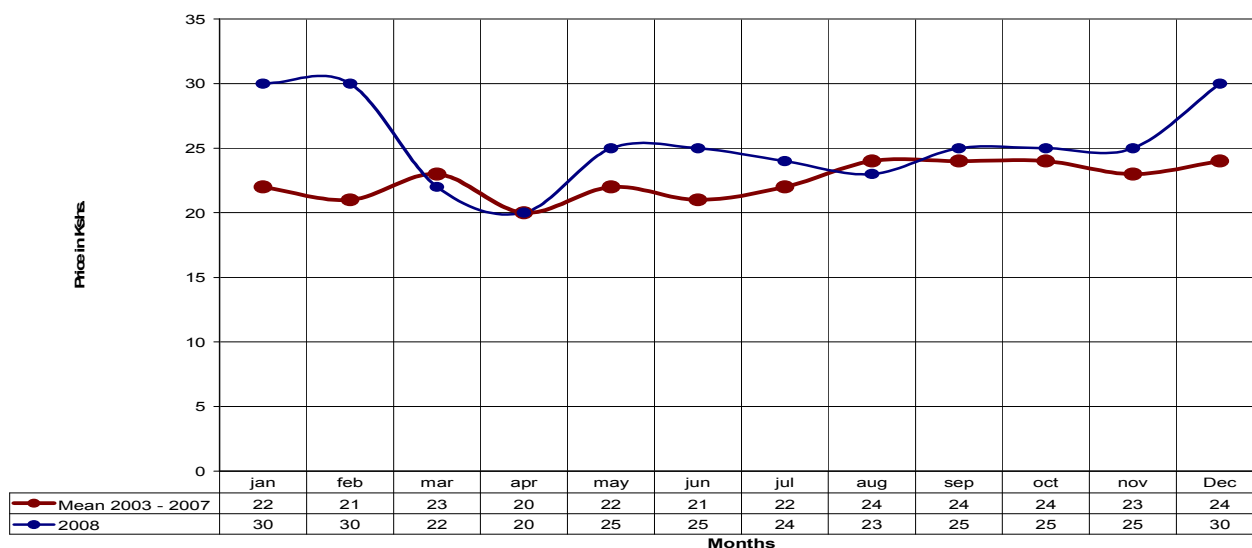
3.3 Milk consumption

- Milk consumption at the household level registered a general improvement as more households were reported to be affording milk to members.
- The improvement could be due to increase in milk yield earlier reported.
- The trend may, however, not sustain as milk yield was expected to be affected by the anticipated harsh climatic conditions.

3.4 Crop prices

3.4.1 Maize prices

TRD Maize Prices at HH level for December 2008 compared to avg. Prices for 2003 - 2007



- The price of maize rose to Ksh30 per kilo compared to Ksh 25 reported last month.
- The price was higher than the seasonal average price of Ksh 24 recorded during the period 2003 – 2007.
- The prices were expected to rise due to scarcity at the household and market level.

3.5 Income

3.5.1 Crop income

- There was a decline in the percentage of incomes derived from the sale of crops.
- Crop income dropped to 7 per cent during the month from 11 per cent last month.
- Further decline in the incomes from crops was anticipated as the mango harvest season was coming to an end.

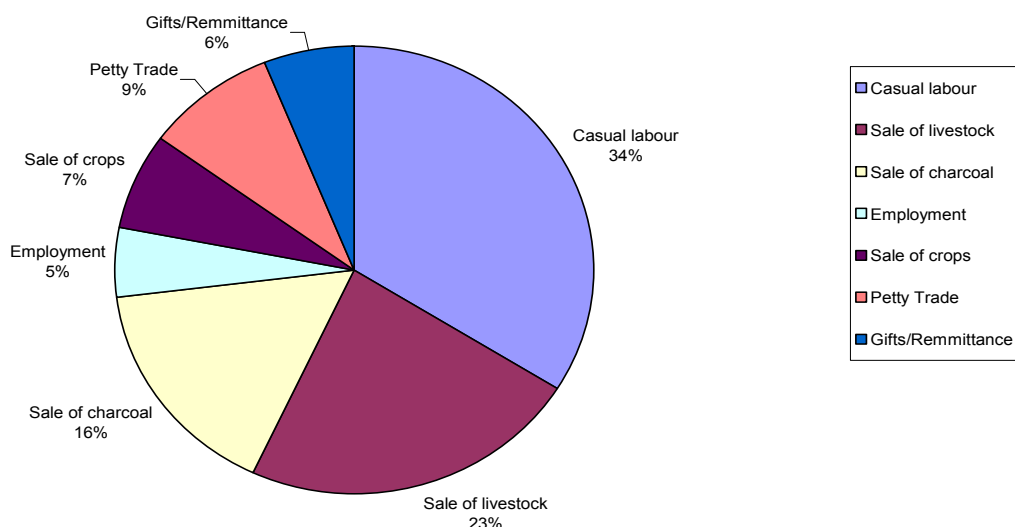
3.5.2 Livestock income

- Income from the sale of livestock and livestock products dropped to 23 per cent compared to 24 per cent reported during the last reporting period. This could be due to restrictions in market for small stock.
- Over 80 per cent of the milk produced in the rural households was reported to have been consumed at home.

3.5.3 Other income

- Apart from livestock and crops, other main sources of income at the household level included casual labour contributing 34 per cent of the total household income, sale of charcoal (16%), petty trade (9%), employment and gifts contributing 6 per cent and 5 per cent respectively.

TRD Main Income Sources at HH level for the Month of December 2009



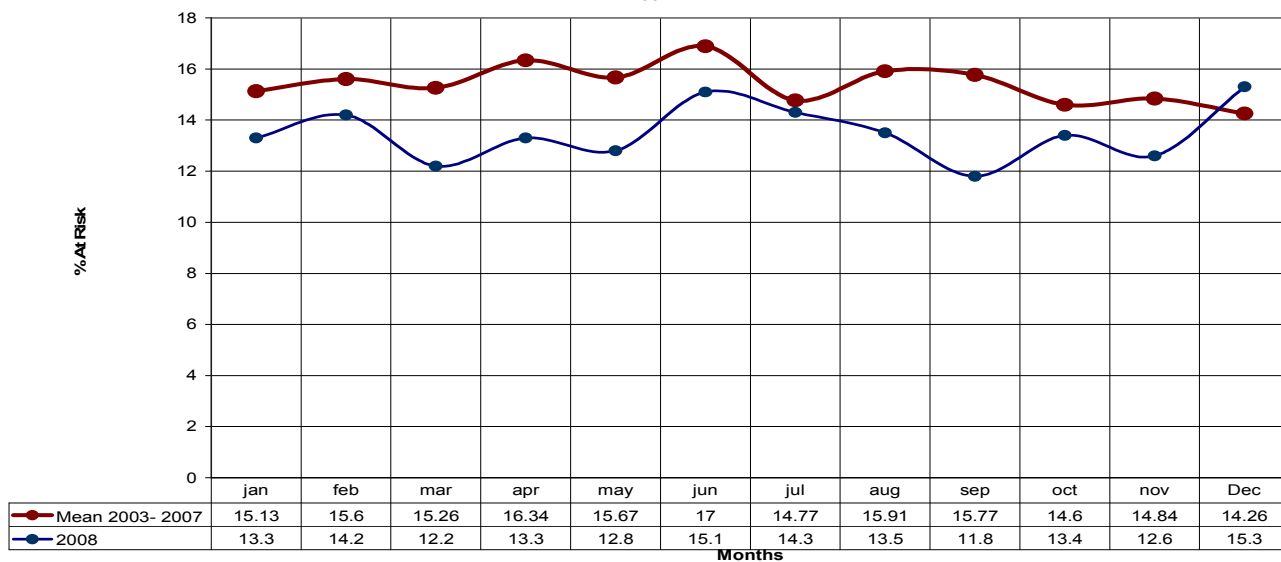
3.6 Implications on food security

- The food security situation was moved towards stress as there were no indications of improvement on the main sources of livelihood (crops and livestock).

4.0 Welfare indicators (utilisation of food)

4.1 Nutrition status

TRD % of Under-fives Categorized as being At Risk of Malnutrition for December 2008 compared to avg. for 2003 - 2007



- The child nutritional status based on the MUAC<135mm measurement recorded a worsening trend.
- The percentage of children under five years categorised as being at risk of malnutrition rose to 15.3 per cent compared to 12.6 last month.
- The rate was also above the long term seasonal mean of 14.28 per cent observed during the period 2003 – 2007.
- At the divisional level, flagged areas include Bura reporting 30.4 per cent, Galole 20.8 per cent and Bangale 27.1 per cent.

4.2 Human Health

- Malaria continued to be the main cause of morbidity in the district.
- Other diseases were Upper Respiratory Track Infections, diarrhoea and pneumonia.

5.0 Current Interventions

5.1 Non-food interventions

- Re-diversion of River Tana and brooks management in Tana Delta, where river diversions are rampant, being carried out jointly by ALRMP, Water department and CDF.
- Health immunization campaigns and outreach programmes by the Ministry of Health.
- Food production by use of water harvesting technology currently under pilot in Wayu Duka, Wayu Boro and Chifiri in Galole division being facilitated by the ALRMP-II.
- Range rehabilitation and reseeded programmes in the hinterland areas of Tana River and Tana Delta by Livestock department in collaboration with the ALRMP-II.
- Fodder harvesting and bulking technologies being carried out by Livestock department in collaboration with Arid Lands Resource Management Project.
- Livestock breed improvement programmes by the Livestock department in collaboration with ALRMP-II.
- Conflict management and resolution initiatives amongst the warring communities by the ALRMP, OOP and other stakeholders.
- Rehabilitation of boreholes as a preparedness activity by ALRMP and Water department.

5.2 Food aid

- EMOP going in Madogo, Bura, Galole and Wenje and benefiting 41, 579 people.
- Supplementary and therapeutic feeding programmes in hospitals and outreach programmes.
- General food distribution by the GOK to vulnerable families.
- Food for work initiatives by the Wenje parish.

5.3 Other coping strategies

Some of the coping strategies employed during the month include

- Casual labour.
- Migration for labour.
- Sell of building poles/wood and wood products.
- Charcoal burning.
- Remittances and gifts from relatives.
- Petty trade.

6.0 Recommendations

- Enhance contingency plans and preparedness activities in readiness for the anticipated drought spell. **Action: District Steering Group/Partners/Communities**
- Security personnel to be deployed in the hot spots to resolve ongoing conflicts and curb anticipated counter attacks. Meanwhile, peace initiatives be enhanced between the warring clans. **Action: District Security Committee/District Steering Group/Partners/Communities**