

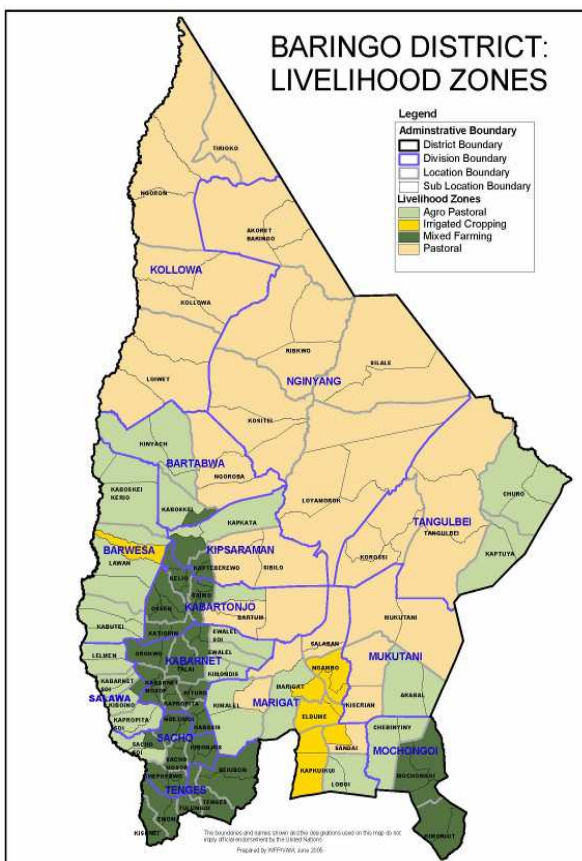


**OFFICE OF THE PRIME MINISTER
MINISTRY OF STATE FOR DEVELOPMENT OF NORTHERN KENYA AND OTHER ARID LANDS
ARID LANDS RESOURCE MANAGEMENT PROJECT II**

DROUGHT MONTHLY BULLETIN, JULY 2008

East Pokot/ Baringo districts

Warning Stages



Livelihood Zone	Warning stage	Trend
Pastoral	Alarm	Improving
Agro pastoral	Alarm	Improving
Irrigated Cropping	Alarm	Improving
Mixed farming	Alarm	Improving

Timeline activities



- Dry season :- (Land preparation, minimal calving, lambing & kidding)
- Long rains :- (Planting, most kidding & lambing and minimal calving & honey harvesting)
- Short rains :- (Most calving & honey harvesting and minimal kidding & lambing, pre-harvest & harvesting)

Situation overview

- Sporadic showers were received during the month under review.
- A total of 385 mm of rainfall was recorded in five ALRMP stations.
- Quality and quantity of forage improved due to the rains.
- Water availability for livestock and domestic use improved.
- Livestock body condition improved for all species.
- Milk production rose slightly during the month due to rejuvenation of forage.
- Prices of cattle and goats rose slightly but remained low for sheep. The slight increase in livestock prices was attributed to access to markets and demand for animals.
- Poultry prices rose slightly due to demand.
- The goats and sheep markets that had been closed in February over PPR outbreak were re-opened.
- Prices of food and other commodities increased during the month owing to scarcity in markets within and outside the district. This was also attributed to increased demand.
- Casual labour, petty trade, sale of charcoal and wood products were the alternative sources of income for most households during the month.
- The nutritional status of children below five years improved slightly from 28.1 per cent to 24.4. This was attributed to distribution of relief food by the Government and aid agencies.
- The volume of livestock sales increased compared to the previous months as a result of re-opening of the sheep and goats market in East Pokot. This impacted positively on food security since sale of livestock is the main source of income for most households.
- All the livelihood zones require relief food, while more than 50 per cent of the population in the two districts is food insecure.

Recommendations to DSG and KFSSG

- Unimix should be provided for children under five years as malnutrition cases keep on rising every month.
- Rehabilitation of access roads to facilitate food supplies and other services to the residents of the districts.
- The veterinary department and agencies should step up support to the livestock health sub sector through vaccinations and treatment of clinical cases. Particular focus should be on upsurge of CCPP in Endao (Marigat division), ECF in Kerio valley and LSD in Ng'ambo (Marigat division).
- GOK and aid agencies to ensure continuous relief food supplies to pastoralist communities in East Pokot and Baringo districts.
- Ensure supply of supplementary foods for children until the stress situation normalises to check cases of malnutrition.
- There is need to strengthen conflict resolution and peace building initiatives to enhance peaceful co-existence along the borders of East Pokot, Baringo, Turkana and Samburu districts.

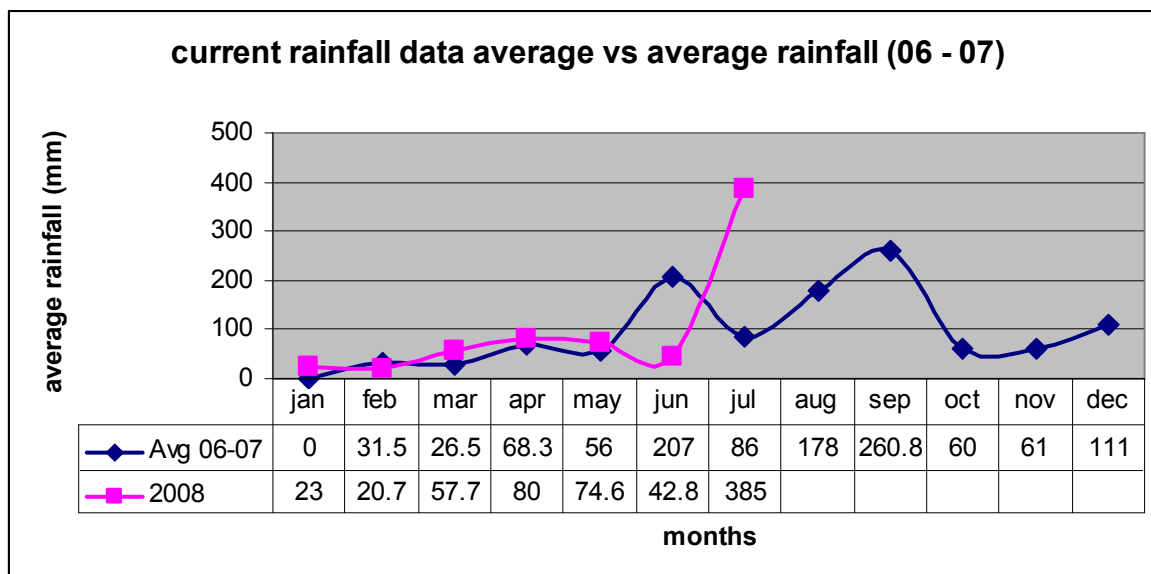
Current interventions

The following programmes are on-going in the project area and are meant to have positive effects on food security and the general welfare of the communities.

- Construction of 2 classrooms each for Chesitet, Orontokrese and Natan communities in East Pokot district - ALRMP/ community.
- Construction of tank and installation of pump for Kolowa water project – ALRMP/ Ministry of Water.
- Construction of roof rain harvesting tank for Kamurio primary school – ALRMP.
- Laying pipes for Tangelbei Borehole – ALRMP / Ministry of Water
- Solar fencing of farms in Salabani and Tilingwo (Kerio farmers) communities in Baringo district - ALRMP.
- Laying of pipes and tank construction for Karimodow Borehole in Churo division – ALRMP.
- Purchase of boarding facilities for Kamurio primary school - ALRMP/ Community.
- Equipping of Kapturo dispensary in Bartabwa division - ALRMP/ COMMUNITY.
- Excavation of Koloruk and Kanapus water pans in East pokot district – CDF.
- Installation of water hand pumps in Sowu and Mokongwo villages in East pokot district – CDF
- Peace building initiatives within the districts’ of the project area by various stakeholders i.e. the PSC, DPC, DSC, World Vision, Community Elders, Youth groups, Political leaders, Pastors and ALRMP.
- Distribution of relief food.-GoK, Action Aid Kenya, Red Cross Society

1.0 Environmental indicators (stability)

1.1 Rainfall



Source: ALRMP rain gauge data stations

- 38.5 mm of rainfall was recorded in five stations compared to 42.8 mm recorded in three stations the previous month.
- The sporadic rainfall was not normal and impacted negatively on water resources.

1.2 Natural vegetation and pasture condition

- The quantity of forage improved slightly in most parts as a result of the showers received. Pasture quality improved but there was general poor rejuvenation due to the long dry spell.
- The average distance to grazing areas decreased during the month owing to improved conditions of pasture and browse in the grazing areas. The distance to grazing fields decreased to an average of 7.4 km. from 10.0 km the previous month.

1.3 Water sources and availability

- There was significant recharge of water sources during the month following the showers received in parts of the district.
- Main water sources were pans and dams, natural rivers, traditional river wells, shallow wells, springs, boreholes and lakes.
- Distance to the nearest water source decreased to an average of 3.5 km from 5.6 in the previous month for most of the households.

1.4 Emerging issues

- The showers received improved browse and pasture but poor rejuvenation was noted compared to previous seasons.
- Distances to water sources and pasture decreased, hence satellite herds remained in neighboring districts of Turkana, Samburu, Laikipia, Marakwet and Keiyo.

1.5 Implication on food security

- Improving browse and pasture conditions and reduced distances to water and grazing areas water improved livestock body condition.
- The situation contributed to good prices, boosting household food security.

2.0 Food availability

2.1 Livestock production

2.1.1 Livestock body condition

- Livestock body condition is improving for all the species in all the livelihood zones following the slight rejuvenation of browse and pasture following the showers received during the month.
- This is normal at this time of the year.

2.1.2 Livestock diseases

- Upsurge of CCPP, LSD and ECF were reported in the area.

2.1.3 Milk production

- Milk production rose slightly owing to improved animal health as a result of improving browse and pasture conditions.

- This is normal at this time of the year as this is the long rains season.

2.2 Crop production

2.2.1 Timeliness and status of crop

- Crops planted in the agro-pastoral livelihood zones dried up due to lack of rain.
- The situation poses a threat to food security in the area and is not normal at this time of the year since agro-pastoralists would normally be weeding their crops and preparing for harvests.

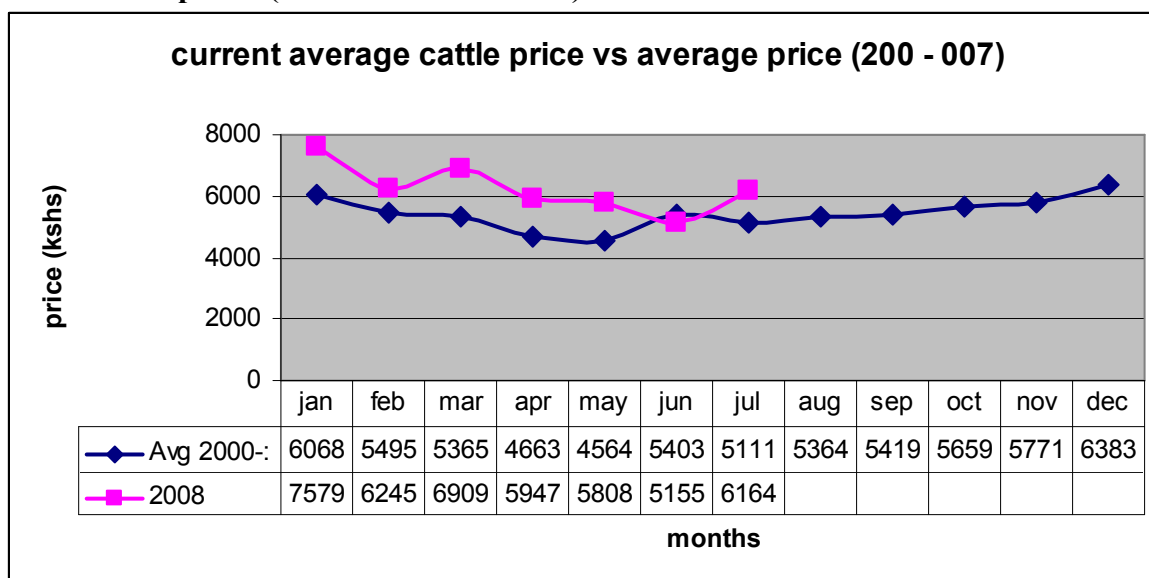
2.3 Implications on food security

- Milk production at household level was not sufficient to support the households.
- Crops also failed due to lack of rain, posing a major threat to food security at the household level.
- The population needs relief food until the situation normalises.

3.0 Access to food

3.1 Livestock marketing

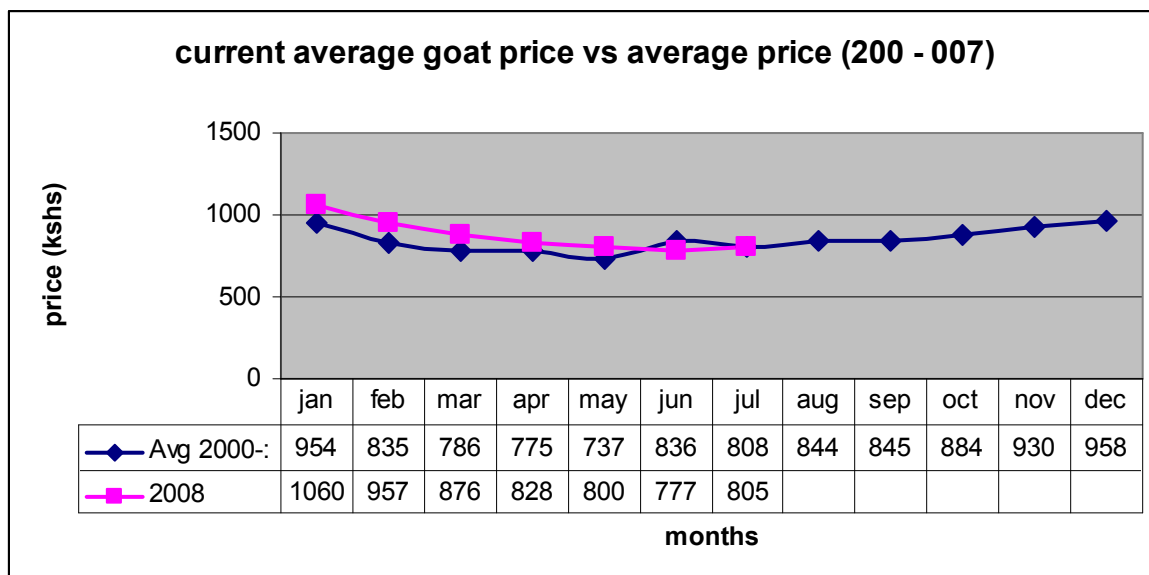
3.1.1 Cattle prices (From household level)



N = 480 hh

- Cattle prices increased to Ksh 6,164 from Ksh 5,155 the previous month.
- The increase was normal but higher than the long term average.
- This was attributed to demand for animals and impacted positively on household food security.
- Marigat division had the highest average cattle prices at Ksh 9,700. This was attributed to fair body condition of animals and access to peri-urban prices.
- Nginyang division had the lowest price at Ksh 4,906 due to poor body condition of animals.

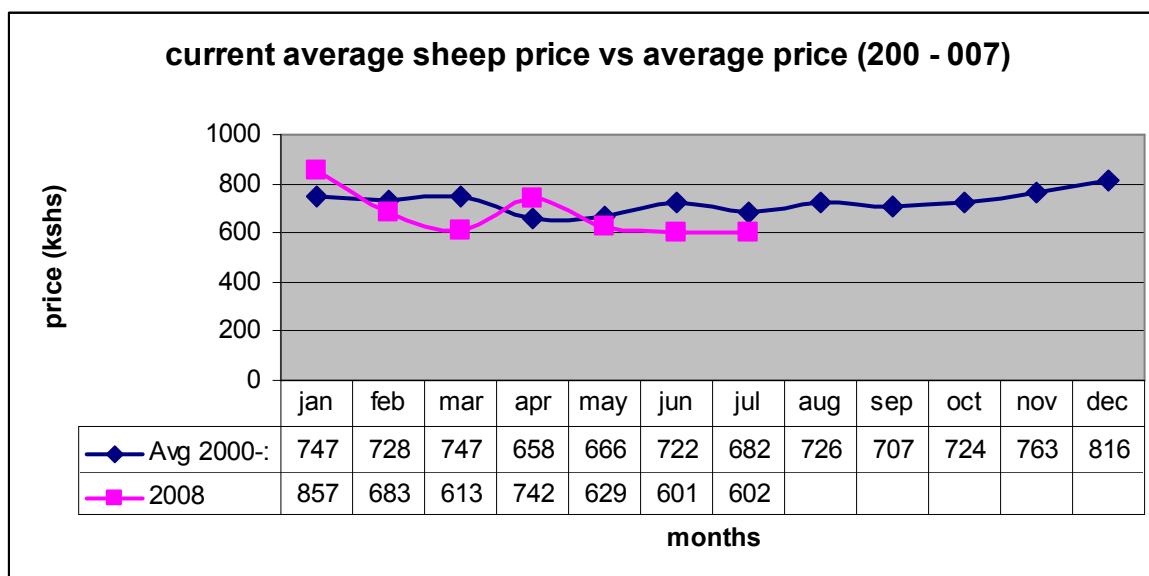
3.1.2 Goats prices (From household level)



N = 480 hh

- The average goat price increased from Ksh 777 in June to Ksh 805.
- The price was below the long term average and the slight increase was attributed to demand following the re-opening of the goats markets in East Pokot. The market had been closed due to an outbreak of a PPR outbreak in February.
- Marigat division had the highest goat prices at Ksh 1,040 while Kolowa division had the lowest price at Ksh 700.
- The situation impacted positively on household food security.

3.1.3 Sheep prices (from household level)



N = 480 hh

- The average sheep price increased by Ksh 1 from Ksh 601 in June to Ksh 602 in July.
- The price was attributed to low demand for animals.
- The prices were, however, lower than the long term average, posing a threat to household food security.
- Mukutani division had the highest sheep price at Ksh 700 owing to fair demand and fair body conditions.
- Tangulbei division had the lowest price at Ksh 450 as a result of low demand.

3.1.4 Camel prices

- Camels are rarely offered for sale and are only reared in the pastoral livelihood zone.

3.2 Livestock sales

- The volume of livestock sales increased in the month compared to the previous months as a result of re-opening of the sheep and goats market in East Pokot district.
- Goats, sheep, poultry and cattle were the main livestock offered for sale.
- The pastoral livelihood zone had the highest sales since households depend on livestock sales as the sole means of income.
- Agro-pastoral and irrigated cropping livelihood zones had the lowest sales owing to availability of other income sources such as businesses, food stocks, and casual labor.
- The level of sales is not normal at this time of the year.

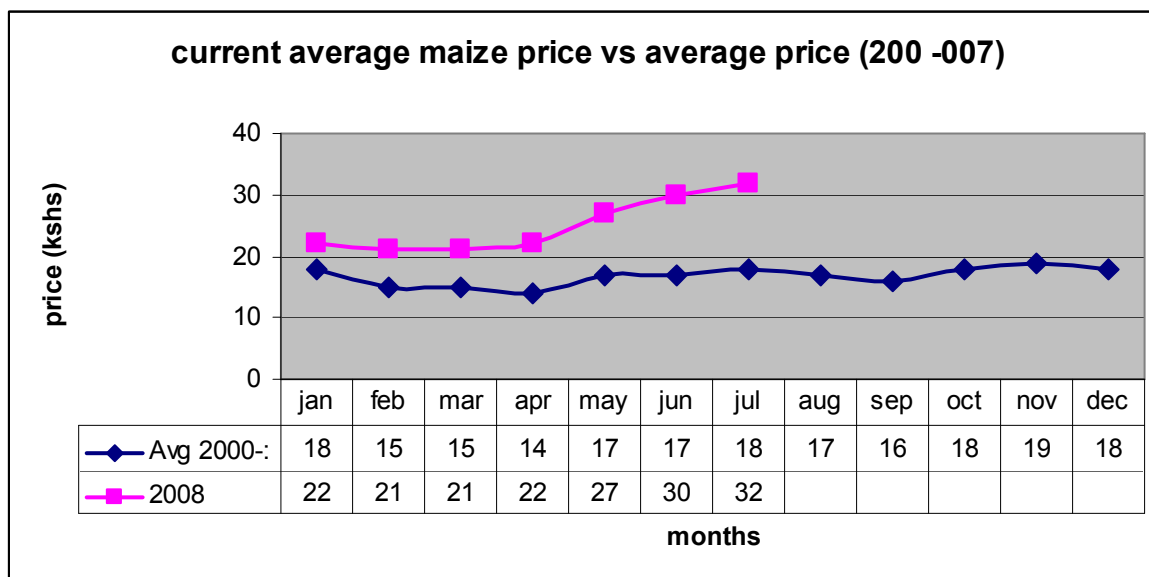
3.3 Milk consumption

- Milk consumption by household members was low in all livelihood zones.

- However, consumption at household level was higher than the month before owing to improved body condition of the animals.
- This had positive implications on household food security at household level, especially for children under five years.

3.4 Crop prices (market prices)

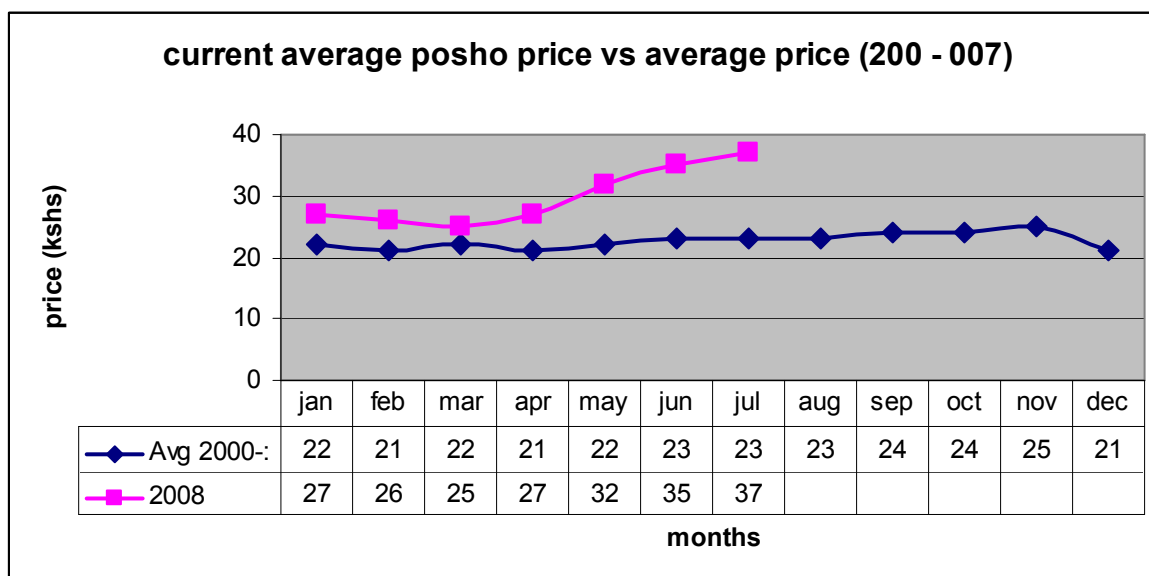
3.4.1 Maize



N = 480 hh

- The average maize price per kg during the month was Ksh 32 per kg, up from Ksh 30 the previous month. The highest price was Ksh 50.
- The average price was almost double the long term mean owing to food scarcity and high demand.
- Prices were higher in the pastoral livelihood zone compared to the agro-pastoral and irrigated farming zones.

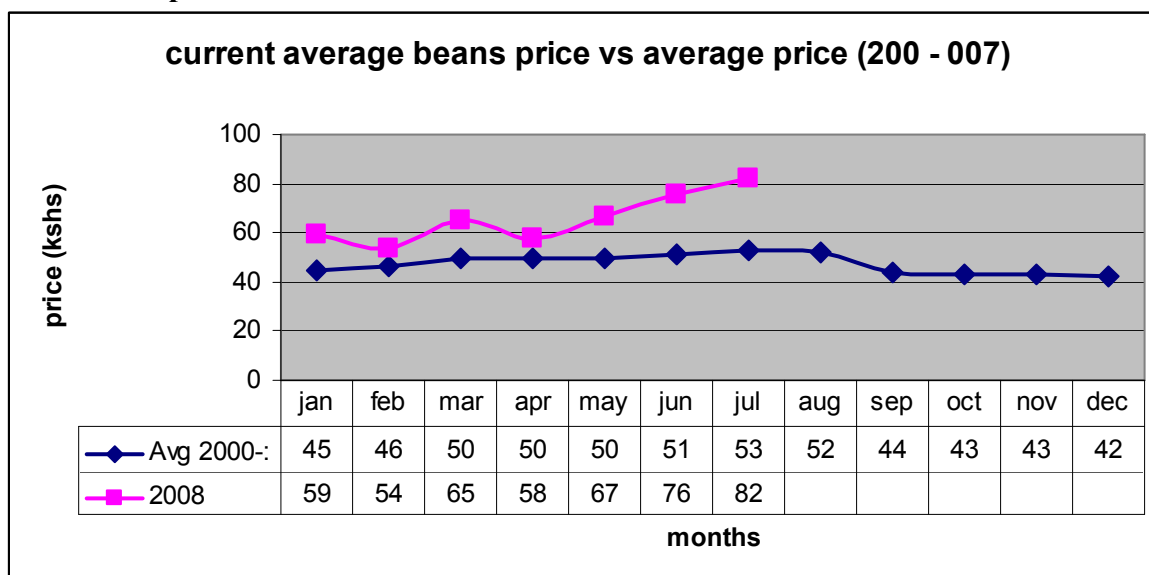
3.4.2 Posho (maize meal)



N = 480 hh

- The average price of posho per kg during the month rose to Ksh 37 from Ksh 35 the previous month. The highest price in the market was Ksh 60 per kg.
- The average price rose due to scarcity in the local markets and was more than the long term average.
- The high price is eroding the purchasing power of pastoralists.
- Posho prices were much higher in the pastoral livelihood zone than in the agro-pastoral and irrigated cropping zones since the pastoral communities only access the commodity from local markets and prices are normally dictated by availability.
- The price of posho was not normal.

3.4.3 Beans prices



N = 480 hh

- The average price of beans during the month was Ksh 82 per kg, which was Ksh 6 more than the previous month. The highest price in the market was Ksh 100 per kg.
- The price was higher than the long term mean due to scarcity of the commodity in the markets within the district and neighboring districts.
- However, the prices were too high and out of reach for pastoralists. The situation posed a threat to household food security.
- Beans prices were higher in the pastoral livelihood zone than in the irrigated cropping and Agro- pastoral zones.
- Beans prices are not normal at this time of the year.

3.5 Income

3.5.1 Crops income

- Crops planted at the onset of the long rains season dried up due to lack of rain.
- The main farming activities in the agro-pastoralist zone should have been weeding and pre-harvest preparations.

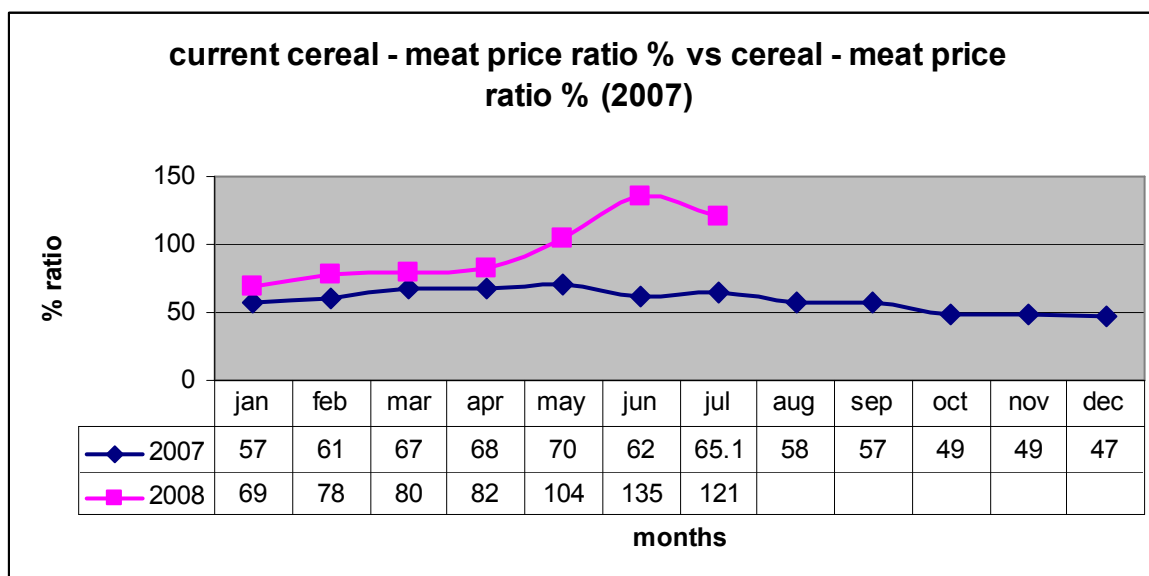
3.5.2 Livestock income

- Income from livestock sales increased slightly due to the re-opening of goats and sheep markets in East Pokot district.
- The income obtained from livestock was not normal at the time of year.

3.5.3 Other income

- Casual labor was also a major source of income during the month, with approximately a third of household members engaged as casual laborers.
- Other sources of income were sale of charcoal, sale of wood products and petty trade (local beer brewing).
- The average daily wage rate per casual for the month was Ksh 89, slightly more than the previous month.
- The rate was too low to meet daily household needs.
- Most of the trade in charcoal, wood products and petty trading was recorded in pastoral and agro-pastoral livelihood zones. This was a reflection of lack of livestock and farm incomes for the households.

3.6 Terms of trade (cereal: meat price ratio) (market based)



N = 480 hh

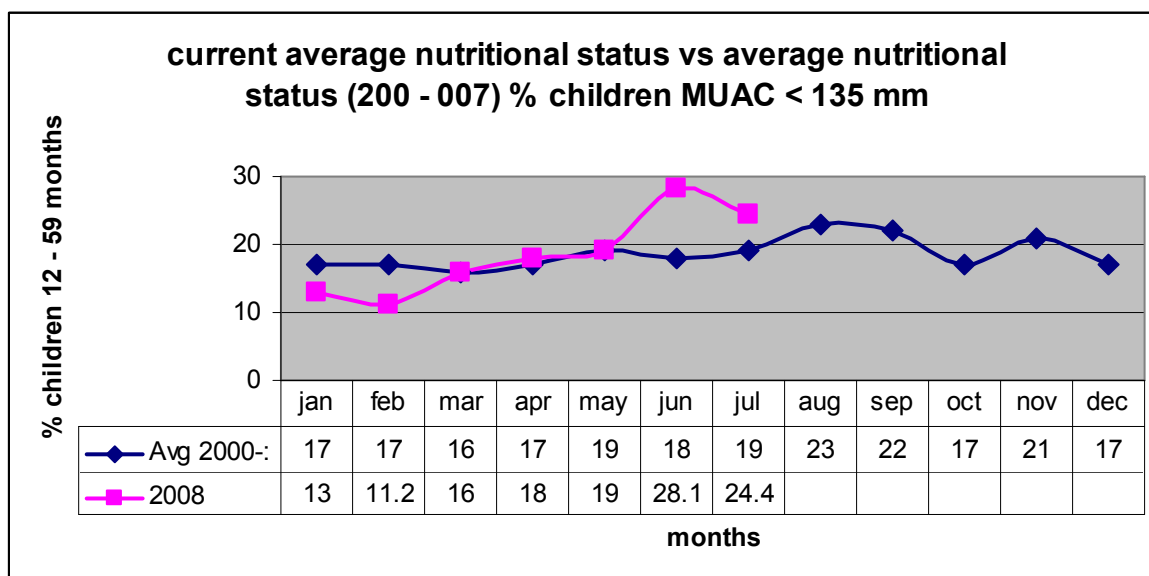
- Terms of trade improved slightly compared to the previous month.
- The ratio improved due to fair sheep and goat prices.
- The communities could only purchase a unit measure of cereals with approximately thirty five units of meat.
- The price ratio was highest in pastoral livelihood zone because of low livestock prices compared to high cereal prices.
- The ratio was lowest in irrigated cropping livelihood zone owing to production of cereals and better livestock prices in this area.
- The current cereal: meat price ratio is not normal at this time of the year.
- This completely eroded the purchasing power and asset level of households.
-

3.7 Implication on food security

- The low livestock prices, coupled with erosion of purchasing power depleted the asset level of pastoralists, hence a threat to household food security.

4.0 Utilization of food

4.1 Nutrition status (children at risk of getting malnutrition)



N = 1,345 children

- The nutritional status of the children below five years improved slightly. The average July MUAC level was 24.4 per cent, down from 28.1 in June.
- This scenario forced communities to restrict food consumption by adults to allow more for children.
- The level of malnutrition at this time of year is more than the long term average owing to lack of supplementary foods at the household level.
- The level of malnutrition was highest in pastoral and agro-pastoral livelihood zones and was lowest in irrigated cropping livelihood zone.
- The situation could be attributed to lack of milk and insufficient food at the household level.

4.2 Health

- The major disease reported during the month was Chicken pox and mumps outbreak, reported in Churo division (Kaptuya area) in East pokot district.
- Diarrhea cases reported in Kolowa division (kapenguria area) among the under five years' children.
- Malaria reported the highest incidences during the month.

4.3 Flagged areas

- The pastoral livelihood zone reported the highest malnutrition rates and cases of malaria.
- The areas require particular attention.

5.0 Current interventions

The following programmes are on-going in the project area and are meant to have positive effects on food security and the general welfare of the communities.

- Construction of 2 classrooms each for Chesitet, Orontokrese and Natan communities in East Pokot district - ALRMP/ community.
- Construction of tank and installation of pump for Kolowa water project – ALRMP/ Ministry of Water.
- Construction of roof rain harvesting tank for Kamurio primary school – ALRMP.
- Laying pipes for Tangelbei Borehole – ALRMP / Ministry of Water
- Solar fencing of farms in Salabani and Tilingwo (Kerio farmers) communities in Baringo district - ALRMP.
- Laying of pipes and tank construction for Karimodow Borehole in Churo division – ALRMP.
- Purchase of boarding facilities for Kamurio primary school - ALRMP/ Community.
- Equipping of Kapturo dispensary in Bartabwa division - ALRMP/ COMMUNITY.
- Excavation of Koloruk and Kanapus water pans in East pokot district – CDF.
- Installation of water hand pumps in Sowo and Mokongwo villages in East pokot district – CDF
- Peace building initiatives within the districts’ of the project area by various stakeholders i.e. the PSC, DPC, DSC, World Vision, Community Elders, Youth groups, Political leaders, Pastors and ALRMP.
- Distribution of relief food.-GoK, Action Aid Kenya, Red Cross Society

5.1 Coping strategies

Majority of households and vulnerable population in all the livelihood zones included the following:

- Livestock migration in search of pasture and water
- Sale of honey
- Consumption of wild foods (Loma and Sorich)
- Borrowing food from relatives
- Reduction of meal sizes and frequency
- Performing casual labour
- Petty trade
- Livestock sale

The situation was worse compared to previous months.

6.0 Recommendations

- All the livelihood zones in Baringo and East Pokot districts require relief food, while more than 50 per cent of the population in the two districts is food insecure.
- Unimix should be provided for children under five years as malnutrition cases keep on rising every month.
- Rehabilitation of access roads to facilitate food supplies and other services to the residents of the districts.
- The veterinary department and agencies should step up support to the livestock health sub sector through vaccinations and treatment of clinical cases. Particular

focus should be on upsurge of CCPP in Endao (Marigat division), ECF in Kerio valley and LSD in Ng'ambo (Marigat division).

- GOK and aid agencies to ensure continuous relief food supplies to pastoralist communities in East Pokot and Baringo districts.
- Ensure supply of supplementary foods for children until the stress situation normalises to check cases of malnutrition.
- There is need to strengthen conflict resolution and peace building initiatives to enhance peaceful co-existence along the borders of East Pokot, Baringo, Turkana and Samburu districts.