

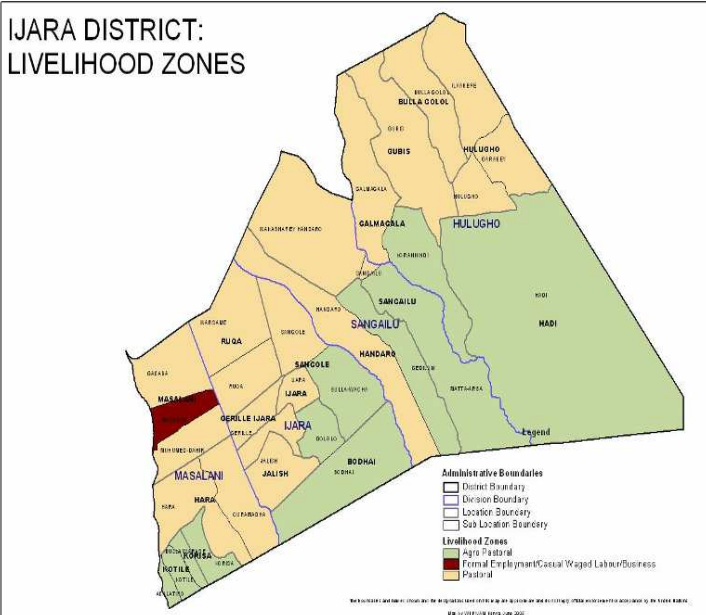


**OFFICE OF THE PRIME MINISTER  
MINISTRY OF STATE FOR DEVELOPMENT OF NORTHERN KENYA AND OTHER ARID LANDS  
ARID LANDS RESOURCE MANAGEMENT PROJECT II**

**DROUGHT MONTHLY BULLETIN, JULY 2008**

**Ijara District**

**Warning Stages**



Livelihood Zone	Stage	Trend
Pastoral	Alert	Improving
Agro pastoral	Alert	Improving
Formal employment/ Casual labor	Normal	Improving

**Time Zone**

<ul style="list-style-type: none"> <li>Milk yield drops</li> <li>Livestock moves towards dry season grazing zones</li> </ul>	<ul style="list-style-type: none"> <li>High milk yield</li> <li>Livestock moves towards the traditional wet grazing areas</li> <li>High calving and lambing rates</li> </ul>	<ul style="list-style-type: none"> <li>Low milk availability</li> <li>Livestock moves towards the fall back dry seasons grazing areas (Boni forest)</li> </ul> <p>Wildlife-human conflicts</p>	<ul style="list-style-type: none"> <li>High milk yield</li> <li>Livestock moves towards traditional wet seasons grazing areas</li> </ul> <p>High mating rates</p>									
Short Dry Spell			Long rains				Long dry spell				Short rains	
Jan	Feb	Mar	Apr	May	Jun	Jul	Aug	Sept	Oct	Nov	Dec	

## **Situation overview**

- Inadequate rainfall was recorded during the month under review, with light showers in both pastoral and agro-pastoral livelihood zones along Boni forest.
- The quality and quantity of browse and pasture improved as a result of the showers.
- Water pans contained fair quantities of water, although quality remained poor.
- Average prices of livestock improved, except for sheep. Cattle fetched the highest prices. Average prices recorded for cattle for the month under review was Kshs 12,108 compared to Kshs 11,876 last month.
- Body condition and health was fair for cattle but poor for shoats in all livelihood zones. However, veterinary department continued vaccination and treatment.
- Number of children under five years at the risk of malnutrition (based on MUAC measurement) dropped from 14 per cent last month to 13.5. Handaro, Koranhindi and Sangailu were the most affected.
- There was no outward migration in the district during the month, but most satellite herds remained camped at Witu, Boni forest and Tana Delta.
- Household accessibility to water dropped, with distances to water sources rising to 6 km up from 3-5km the previous month.
- Distance to livestock watering points remained at 7km to 13km.
- PPR and CCPP continued to affect shoats but cases of CBPP were reported in cattle in agro-pastoralist zones, especially Sangailu, Kotile, Bodhai Jalish and Bulito Hama.
- Milk availability increased slightly in all the livelihood zones due to improved livestock body condition following the coastal showers received.

## **Recommendations to KFSSG and DSG**

- Need to continue to encourage and support crop farming in the agro-pastoralist zones in order to enhance food security in the district through programmes such as *Njaa Marafuku*, provision of seeds and other inputs.
- Reduce levels of malnutrition in pregnant and lactating women and children under five years through provision of supplementary food, medical and awareness programmes.
- Continue to encourage construction of pit latrines/toilets in settlements and schools and provision of safe drinking water to prevent diarrhoeal disease.
- Sensitise the community on nutritional and commercial value of fish.
- Strengthen outreach clinics and organise medical camps with other actors.
- Measures to curb wildlife menace should be put in place.
- PPR and CCPP vaccination campaigns to continue across the district.
- Provision of safe drinking water to prevent communicable diseases.
- Increase and enhance water supply for human consumption in urban areas and in particular, Masalani.
- Measures to combat malaria and improve sanitation should be strengthened.

## **1.0 Environmental indicators (stability)**

### **1.1 Rainfall**

- Rains were inadequate, with only light coastal showers recorded in the first two weeks of the month along Boni forest.
- The rains were fairly distributed in all the livelihood zones in Kotile, Hara, Ijara, Sangailu, Hulugho and Bodhai.
- The rain impacted positively on household food security in all the livelihood zones through improved milk production following better livestock body condition.

### **1.2 Condition of natural vegetation and pasture**

- Quantity and quality of browse and pasture improved in the pastoral and agro-pastoral livelihood zones.
- Quantity of pasture was inadequate, though browse remained fairly adequate across the district. The situation is not normal at this time of the year.

### **1.3 Water sources**

#### **1.3.1 Use of water sources**

- Pans and water ponds remained the major water sources for most parts of the district but residents of the district headquarters rely on River Tana.
- Most of the medium and large water pans have substantial water volumes that can sustain pastoralists for the next two weeks.
- Most livelihood zones are relying on water pans and dams, which is not normal at this time of the year as natural ponds are the main water sources.
- The water sources had positive impact on food security.

#### **1.3.2 Average distance (kms) to water sources**

- The average distance to water sources from grazing areas and domestic households was recorded at (3km –6km) almost the same as last month, which was (3km- 5km).
- The trend was normal for the season and had positive impact on food security because communities saved a lot of time that was used for other gainful activities.

### **1.4 Emerging issues**

#### **1.4.1 Conflicts/ insecurity/human displacement**

- Human-wildlife conflicts increased, with communities suspecting that swelling wildlife numbers are a result of displacement from Somalia and encroachment on wildlife habitats and migration routes by human settlements.

### **1.5 Implication on food security**

- The above conditions are expected to impact positively on food security.

### **1.3.2 Migration**

- Most of the satellite herds are still camping within the dry season grazing areas inside the Boni forest and around Witu division. Migration towards the north have began but on a small scale.

## **2.0. Rural economy indicators (food availability)**

### **2.1 Livestock production**

#### **2.1.1 Livestock body condition**

- Body condition and health of livestock was fair in all livelihood zones. However, there was a CBPP outbreak in Sangailu and cases of PPR were reported in pastoral livelihood zones. Trypanomiasis is still endemic.
- Livestock production prices have improved following the rains.
- The situation had a positive impact on household food security as milk was available for children under five years, while rise in livestock prices slightly stabilized food prices for pastoralist households.

#### **2.1.2 Livestock diseases**

The following diseases are prevalent and affect livestock in all the livelihoods.

- Cattle – LSD, CBPP, Trypanosomiasis and black quarter anthrax.
- Sheep-Helminthiasis, sheep enterotoxaemia, pulpy kidney disease.
- Goats-CCPP, Helminthiasis.

#### **2.1.3 Milk production**

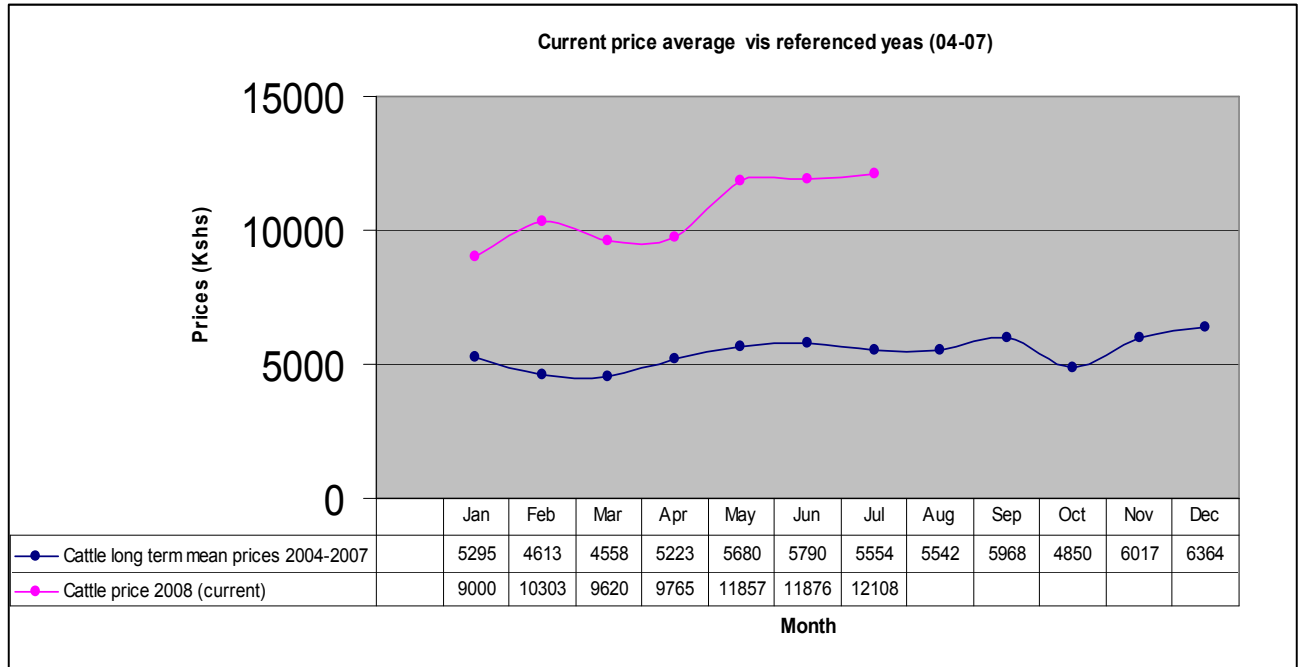
- Milk production increased slightly in all the livelihood zones compared to the previous month and this is attributed to the continuing coastal showers.
- Milk availability ensured the health of children under five years.

## **3.0 Access to food**

### **3.1. Livestock marketing**

#### **3.1.1 Cattle prices**

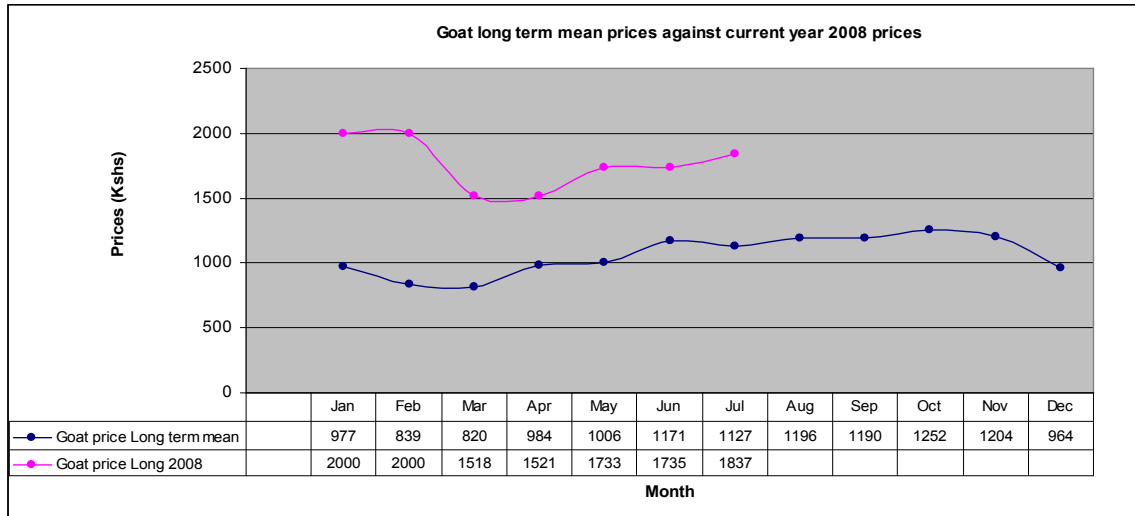
*The graph below indicates cattle long term mean prices against current year (for July) 2008 prices.*



- Cattle prices rose from Kshs 11,876 to Kshs 12,108. The rise is normal for this time of the year.
- Pastoral and formal/casual employment livelihood zones recorded the highest cattle prices at Kshs 14,544 and Kshs 12,000 respectively, while agro-pastoralist livelihoods had the lowest.

### 3.1.2 Goat prices

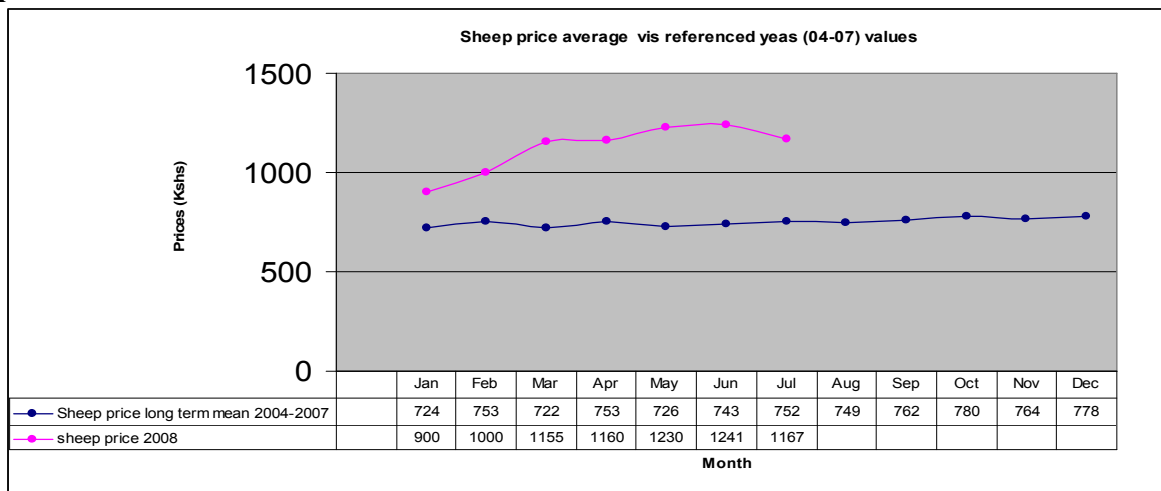
*The graph below indicates goat's long term mean prices against current 2008 year prices.*



- Goat prices appreciated to Kshs 1,837.7 from Kshs1,735. The rise is normal for this time of the year.
- Improvement in livestock body conditions are among the factors behind improvement in goat prices.

### 3.1.3 Sheep prices

*The graph below indicates sheep long term mean prices against current 2008 year prices.*



- The prices of sheep dropped slightly from Ksh 1,241 to Ksh1,167 and recorded above the long term mean.
- The trend is normal and may be attributed to lack of market in the entire district but had positive impact on food security.
- Pastoral and agro-pastoral livelihood zones had the highest prices recorded at Kshs 1,275 and Kshs 1,200 respectively while formal/casual employment had the lowest of Ksh 550.

### 3.2 Livestock sales

- Livestock sales dropped slightly, except for goats, compared to last month.
- The trend was not normal but had positive impact on household food security.

### 3.3 Milk consumption

- Milk consumption in rural households was low, though improving with percentage of households able to give their children milk rising.
- However, consumption across the entire district continued to be low with only an average of 15 per cent of household members recorded.

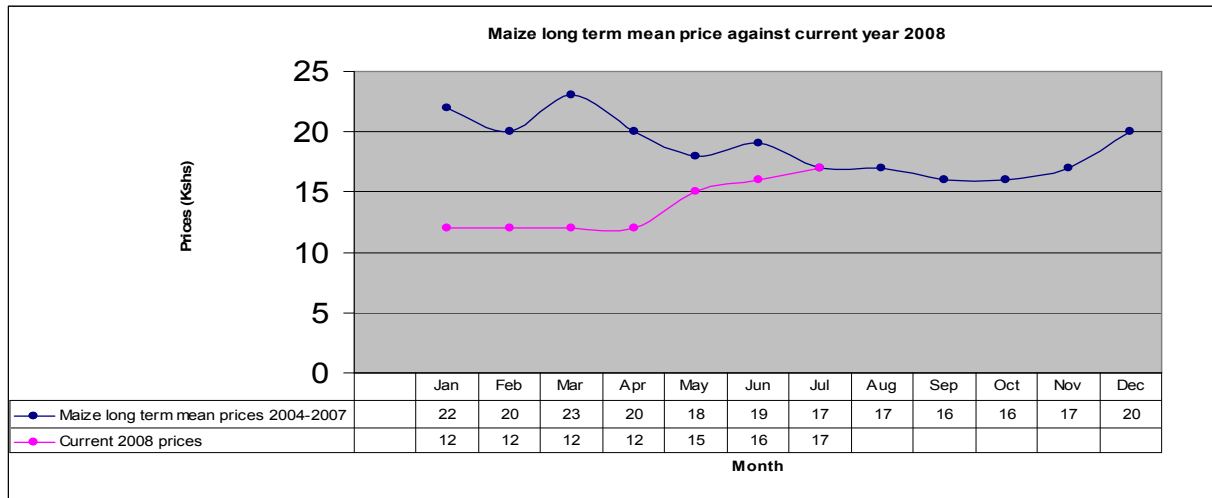
### 3.4 Food prices

- Prices of foodstuff remained stable during the month under review.

#### 3.4.1 Maize

- The average price of maize went up in almost all the sentinel sites in the district.
- The observed trend had negative impact on household food security and may be attributed to the ongoing rains, which rendered roads impassable.

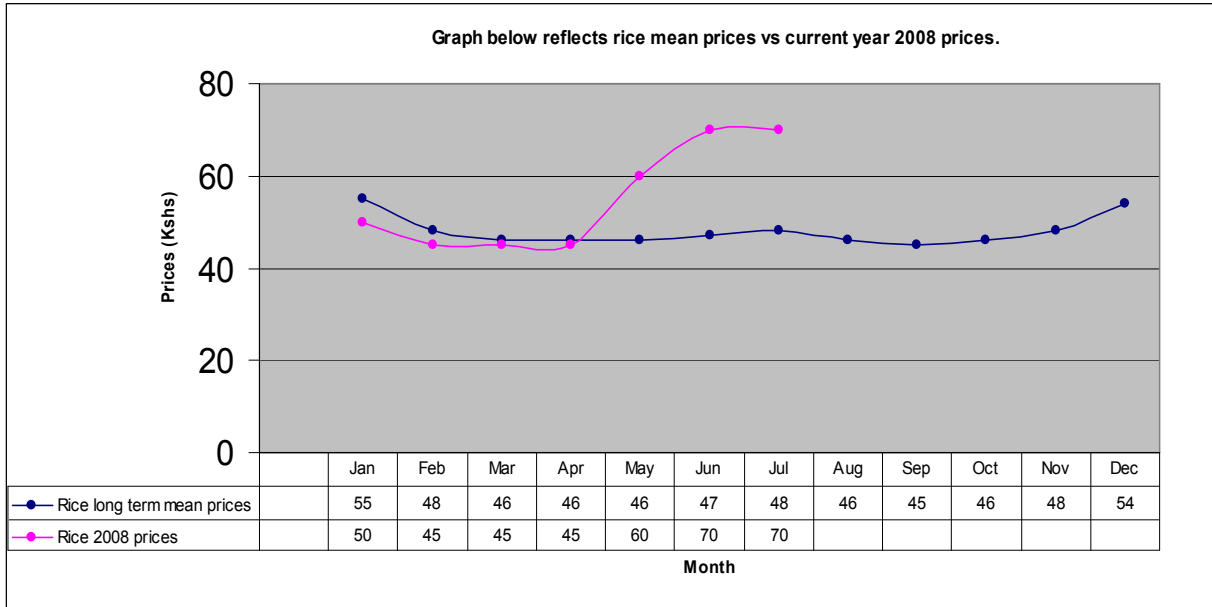
*The graph below reflects maize long term mean prices against current 2008 year prices.*



#### 3.4.2 Rice

- The average prices of rice remained same as previous month but still high. This is attributed to global increase in fuel price.

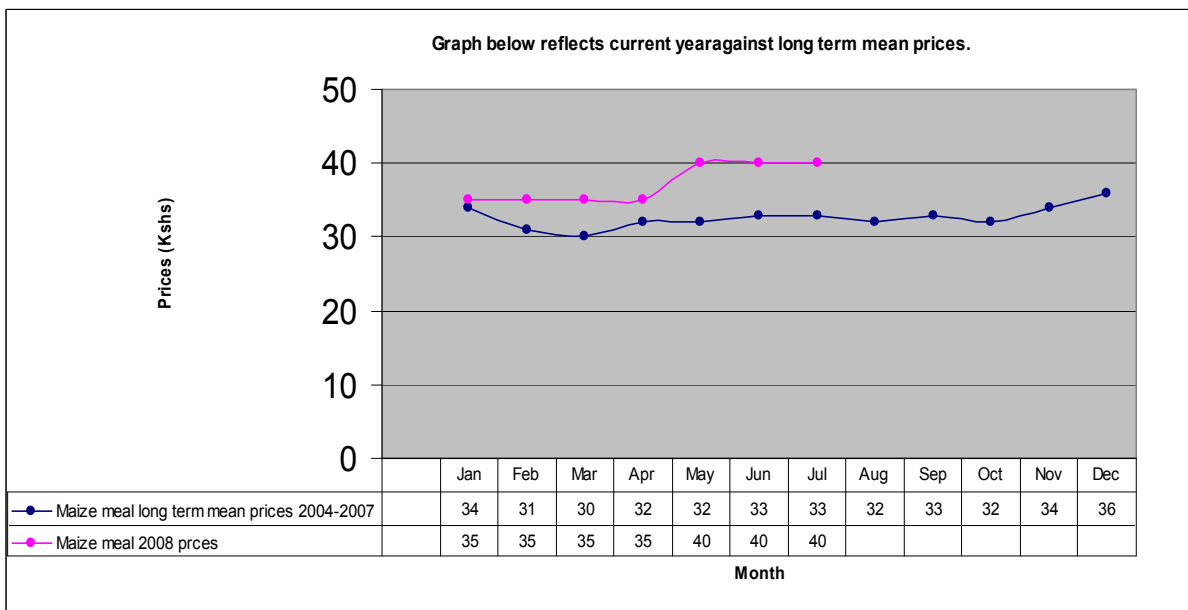
*The graph below reflects Rice long term mean prices against current 2008 year.*



### 3.4.3. Sifted maize meal

- The average price of sifted maize meal stabilized and remained at Ksh40 per kg, though still high. This could be attributed to the ongoing rains rendering roads impassable.
- The trend had negative impact on household food security.

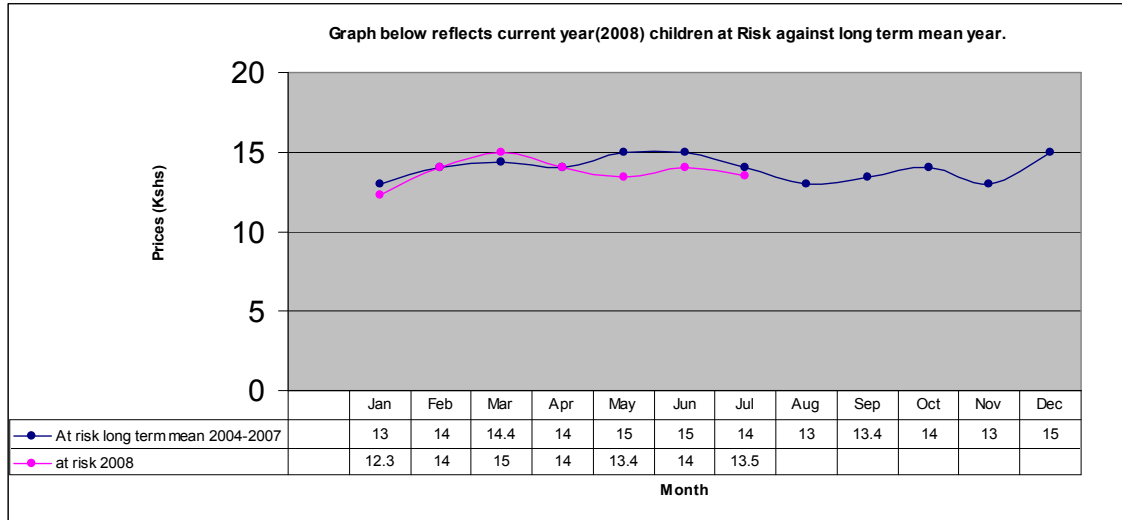
*The graph below reflects sifted maize meal long term mean prices against current 2008 year.*



## Human Welfare Indicators

#### 4.1. Malnutrition (MUAC) rates

The graph below indicates long term mean of children (under fives) at risk against current 2008 year rates.



- There was slight change in the child nutritional status based on the MUAC measurement as the percentage of children rated “at risk” of malnutrition dropped from 14 per cent last month to 13.5 during the month under review.
- Pastoralist livelihood zones are still recording high percentages of children at risk of malnutrition. Sangailu, Handaro and Koranhindi are the most affected.
- The above trend could be attributed to increased availability of milk brought about by the slight showers.

#### 4.2 Human Health

- No outstanding disease outbreaks were recorded but malaria and upper respiratory tract infections remain the most common ailments, though at manageable levels.

#### 4.3 Flagged areas

- Pastoralist livelihood zones of Koranhindi, Handaro and Sangailu were most affected.

#### 5.0 Current interventions

##### 5.1. Non- food interventions

- Construction of water harvesting structures for crop production by Ministry of Agriculture.
- Water hyacinth removal from pans in Hulugho by Water Dept/ALRMP.
- Distribution of seeds to farmers by Ministry of Agriculture.
- Mobile outreach clinics by MoH/ALRMP.
- Distribution of Unimix and Vitamin A supplementation by MoH/UNICEF.
- Vaccination against CBPP and PPR, already 8,600 cases of CBPP and 9,000 of PPR have been vaccinated.

- Establishment of tree nurseries—a total of 15,000 seedlings are in nurseries.

### **5.2. Food Aid**

- No distribution of relief food during the month.

### **5.3. Coping strategies**

Among the coping measures adopted during the month were:

- Collection and sale of bush products.
- Herding and other casual work.
- Sales of quarry products.

### **5.4 Recommendations by DSG**

- Disease surveillance should be sustained by veterinary department and other stakeholders to contain any outbreaks.
- All stakeholders to support vaccination through Veterinary department to contain any outbreaks.
- The MOH should strengthen and sustain disease surveillance to avert increase in malaria cases.
- Rural health facilities should be stocked with sufficient drugs to allow easy access by pastoralists.
- Anti-malarial campaigns should be strengthened.
- Agricultural extension services should be strengthened by DAO.
- Impeding conflicts over the three mile strip along the Tana River to be resolved by the concerned authorities.
- Measures to control wildlife menace to be put in place.

(Action: MOH, DPHO, CBOs, Vet department, ALRMP11, Womankind, Oxfam GB, District Peace Committees, Local Authorities and DSCs)