

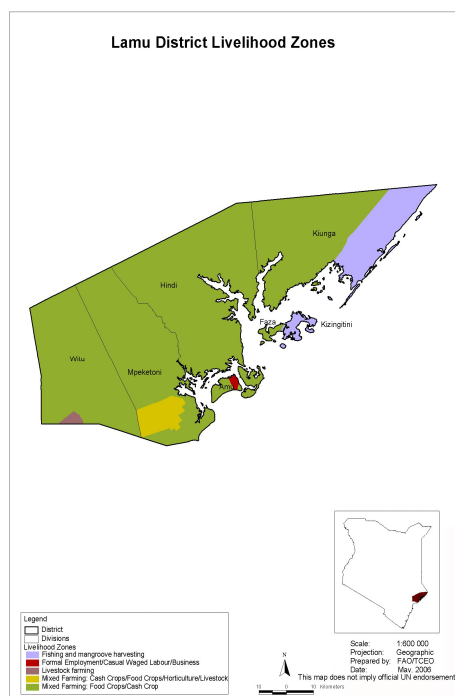


**OFFICE OF THE PRIME MINISTER  
MINISTRY STATE FOR DEVELOPMENT OF NORTHERN KENYA AND OTHER ARIDLANDS  
ARID LANDS RESOURCE MANAGEMENT PROJECT II**

**DROUGHT MONTHLY BULLETIN, JULY 2008**

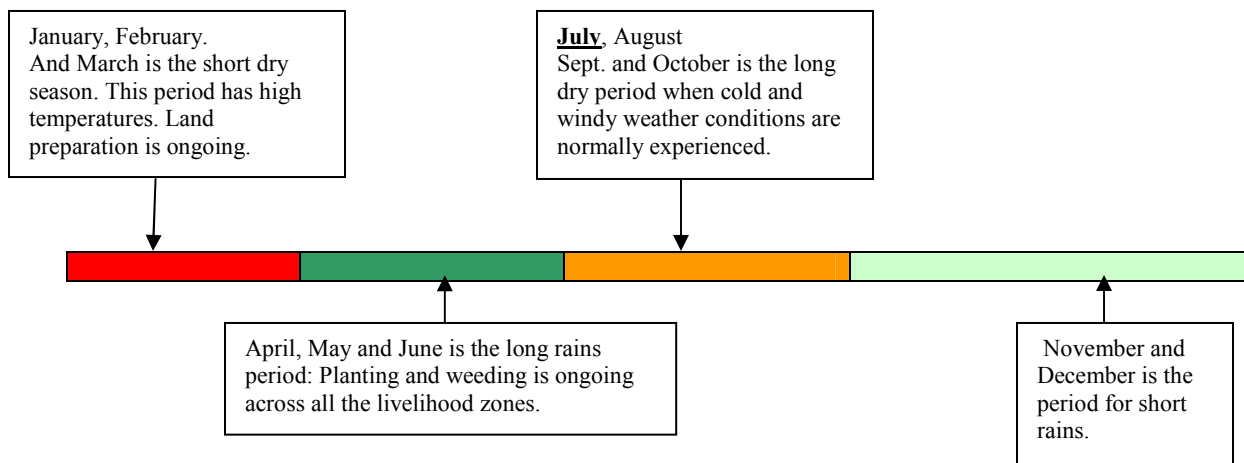
**Lamu District**

**Warning Stages**



Livelihood Zone	Stage	Trend
Mixed Farming: Cash crops/food crops/horticulture	Normal	stable
Mixed Farming:/food crops/Cash crops /	Normal	stable
Livestock farming	Normal	stable
*Fishing		
*Formal employment/casual waged labour/business		
<b>District</b>	Normal	<b>Stable</b>
* Livelihood zone not covered in the EWS Programme		

**Timeline activities**



### **Situation overview**

- An average of 64mm of rainfall was reported across the district.
- The quality of forage and pasture was average and fairly available.
- Shallow wells were the main water sources for households, followed by boreholes and natural ponds. Other sources were natural rivers and lakes but most settlement schemes are covered by piped water.
- Household access to water was average, with distances to water points standing at 1.7 km, up from 1.3 km last month.
- Livestock pests and wildlife posed a major constraint to pasture access.
- Average distances to grazing areas increased slightly from 1.9km to 2 km due to cropping activities and inaccessibility as a result of floods.
- Milk production averaged 1.03 litres per household per day, which was below last month's production of 1.15 litres.
- Cattle prices went up by 24 per cent compared to long term average of 2006-07.
- Goat prices dropped by 5 per cent compared to the long term average.
- Maize prices rose by 64 per cent and beans by 32 per cent.
- The main farming activities were harvesting, land preparation and planting, especially in areas previously affected by floods.
- Livestock migration to parts of Tana River and Ijara districts was reported during the month.
- No major disease incidences were reported.
- The situation in the district is normal and the trend is stable.

### **Current interventions**

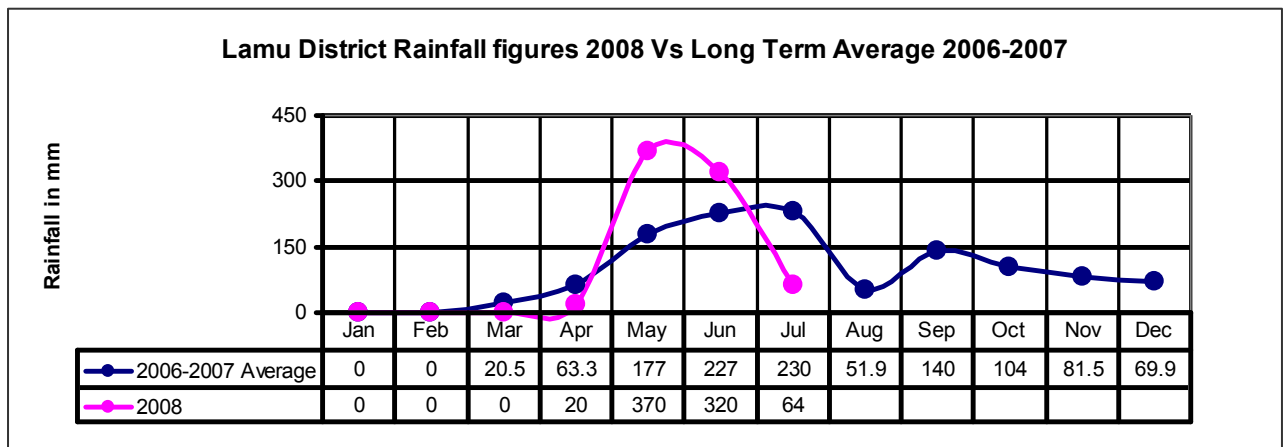
- KRCS is distributing food to farmers affected by floods. The food includes 1,500 bags (90kgs) of maize, 270 bags (90kgs) of beans and 270 bags (50kgs) of rice.

### **Recommendations**

- The Ministry of agriculture to conduct trainings on proper post-harvest handling techniques to ensure harvested crop is handled properly.
- Kenya Wildlife Service to intervene and end human/wildlife conflicts across the district to reduce crop damage by animals.

## **1.0 Economic Indicators (stability)**

### **1.1 Rainfall**



- An average of 64mm of rainfall was reported across the livelihood zones.
- The livestock livelihood zone reported the least at 46mm, while the mixed farming and food crops/cash crop zones reported the highest at 104mm.
- The amounts received were, however, normal going by the 2006/07 long term averages.

## 1.2 Natural vegetation and pasture condition

- The quality of forage and pasture was average and fairly available. Livestock pests and wildlife posed a major constraint to access to pasture.
- Average distances to grazing areas increased slightly from 1.9km to 2 km due to cropping activities and inaccessibility as a result of floods.
- The distances were higher for the mixed farming and food crops/cash crop livelihood zones compared to the other two livelihood zones.
- This could be attributed to the ongoing cultivation, making farms inaccessible for grazing.
- The situation is normal at this time of the year.

## 1.3 Water sources and availability

- Shallow wells were the main water source for households at 36 per cent, followed by boreholes and natural ponds at 27 per cent each.
- Other water sources, including natural rivers and lakes, each supplied 9 per cent of water.
- Most settlement schemes are covered by piped water.
- Household access to water was average, with distances to water sources standing at 1.7 km, up from 1.3 km last month.

- The distances to water sources for households in the mixed farming: food/cash crop livelihood zone are the highest at 1.7 km, but within the normal range at this time of the year.

#### **1.4 Emerging issues**

##### **1.4.1 Livestock migration**

- Livestock migration to parts of Tana River and Ijara districts was reported during the month.

##### **1.5 Implications on food security**

- If left unchecked, the crop pest cases may put farmers' efforts in harvest into waste.

### **2.0 Rural economy indicators**

#### **2.1 Livestock production**

##### **2.1.1 Livestock body condition**

- The body condition of cattle and shoats was fair.

##### **2.1.2 Livestock diseases**

- Trypanosomiasis is endemic in the three livelihood zones.
- This is normal for this time of the year, though it was higher due to a high tsetse fly challenge.

##### **2.1.3 Milk production**

- Milk production averaged 1.03 litres per household per day, which was below last month's production of 1.15 litres.
- Households in the livestock livelihood zone produced the highest amount of milk at 2.3 litres per household per day, down from 2.5 litres the previous month. The mixed farming, food/cash crop livelihood zone produced the lowest at 0.78 litres per household per day.

#### **2.2 Crop production**

- Most crops were ready for harvesting.
- Land preparation and planting went on, especially in areas previously affected by floods.
- Lower quantities of mangoes were harvested compared to previous month.
- Harvesting of vegetables also started during the month.

##### **2.2.1 Pests and diseases**

- Animals were the main threat to crops, which is normal at this time of the year.

##### **2.2.2 Implications on food security**

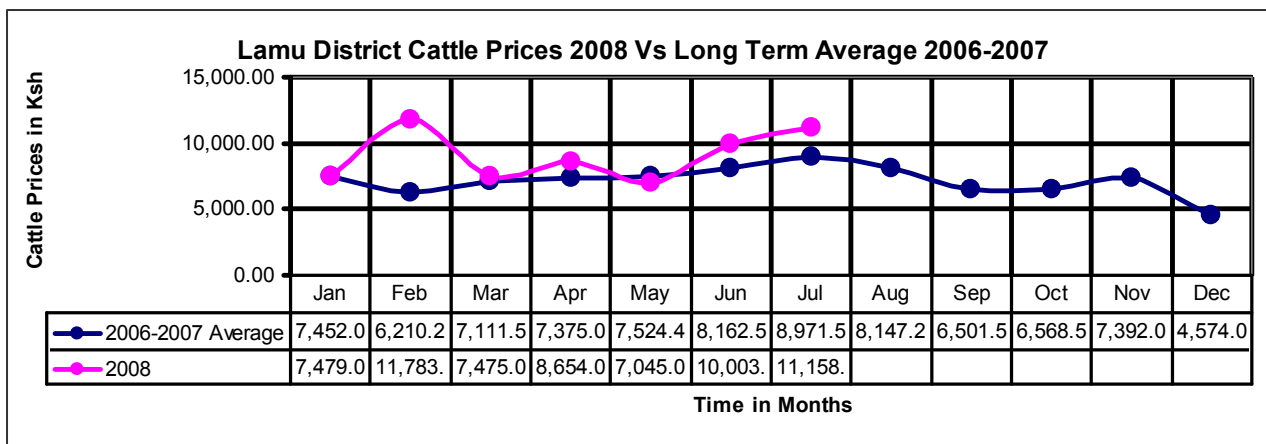
- Milk production stabilised after a long downward trend. This had positive implications on food security in the district.

- Most parts of the district are currently food secure, except those areas that were affected by floods.

### 3.0 Access to food

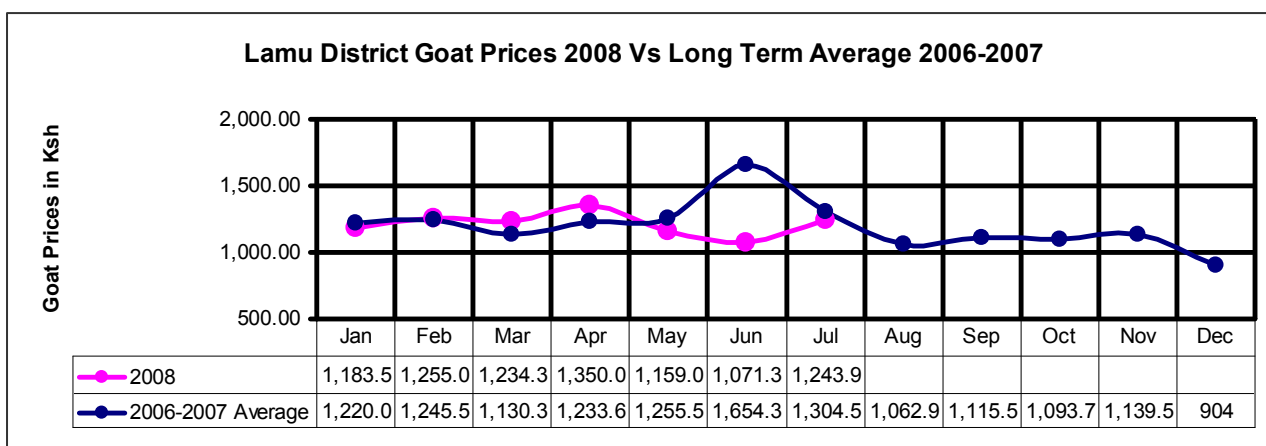
#### 3.1 Livestock marketing

##### 3.1.1 Cattle prices



- The average cattle price at farm gate level was Ksh 11,158, which was higher than the previous month's Ksh 10,003. The price is rising due to the start of the harvest season.
- Highest cattle prices were recorded in the mixed farming, food crops and cash crops livelihood zone at Ksh 12,000, while the livestock farming livelihood zone recorded the lowest at Ksh 10,316.
- The trend, however, is normal at this time of the year.

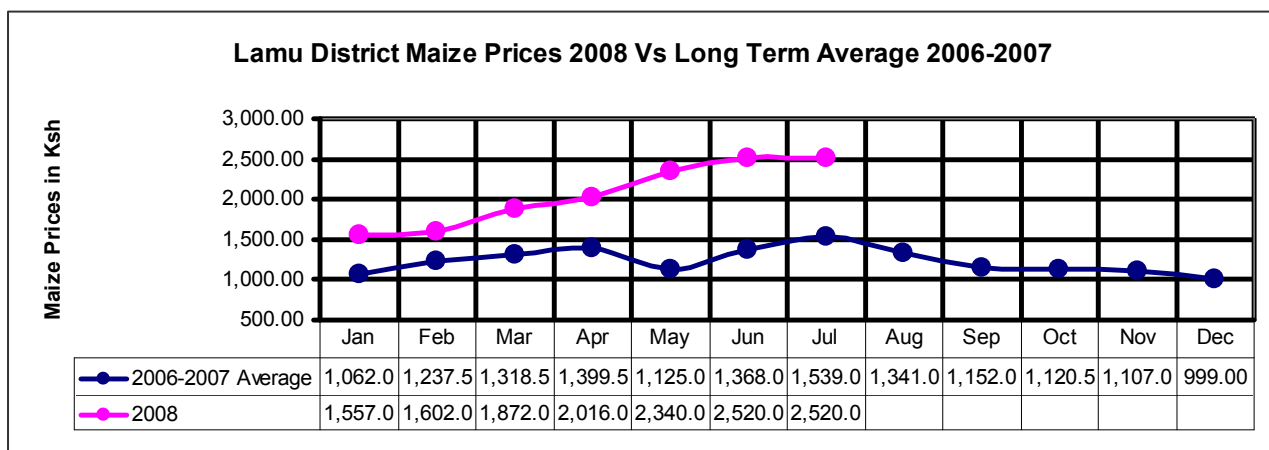
##### 3.1.2 Goat prices



- The average goat price at farm-gate was Ksh 1,243, which was slightly higher than last month's Ksh 1,071 and lower than the 2006/07 average of Ksh 1,304.

- Highest prices were recorded at livestock farming livelihood zone at Ksh 1,300, while the lowest recorded at the mixed farming, cash crops/food crops/horticulture livelihood zone at Ksh 1,166.

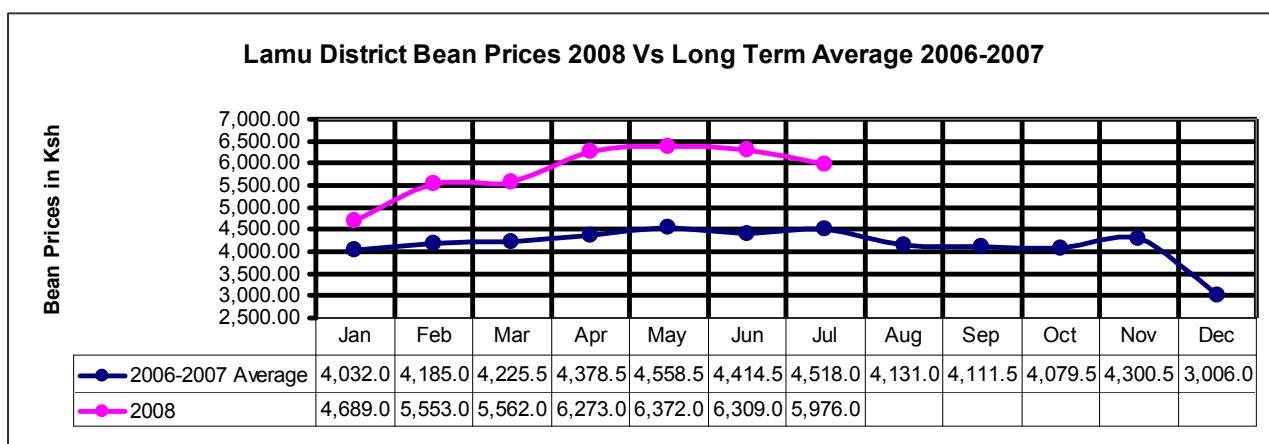
### 3.2 Crop prices



#### 3.2.1 Maize

- Maize prices at market level averaged Ksh2, 520 per 90kg bag, similar to last month's price and are stabilizing.
- The price is way above the price at the same time of the long term average of year 2006/07 of Ksh1, 539 since dry maize is yet to be available from the farms.
- Higher Maize prices were recorded in the mixed farming: food crops/cash crop livelihood zone at Ksh 2,520 and the livestock farming livelihood zone reported nil sales.

#### 3.2.2 Beans



- Average price of beans at market level were Ksh 5,976 per 90kg bag, down from Ksh 6,309 in June. The price was, however, higher than the long term average of Ksh 4,514.

- The price drop was attributed to the onset of the harvest season, especially for legumes.
- The prices were recorded only in the mixed farming, food crops/cash crop livelihood zone.

#### 4.0 Income

##### 4.1 Crop income

- Mangoes and vegetables formed the bulk of crop income but production is declining.

##### 4.2 Livestock income

- Sale of livestock and livestock products accounted for 3 per cent and 8.5 per cent of total household income sources in the district.
- Livestock sales were only recorded in the mixed farming, food crops/cash crop and livestock livelihood zones.

##### 4.3 Other income

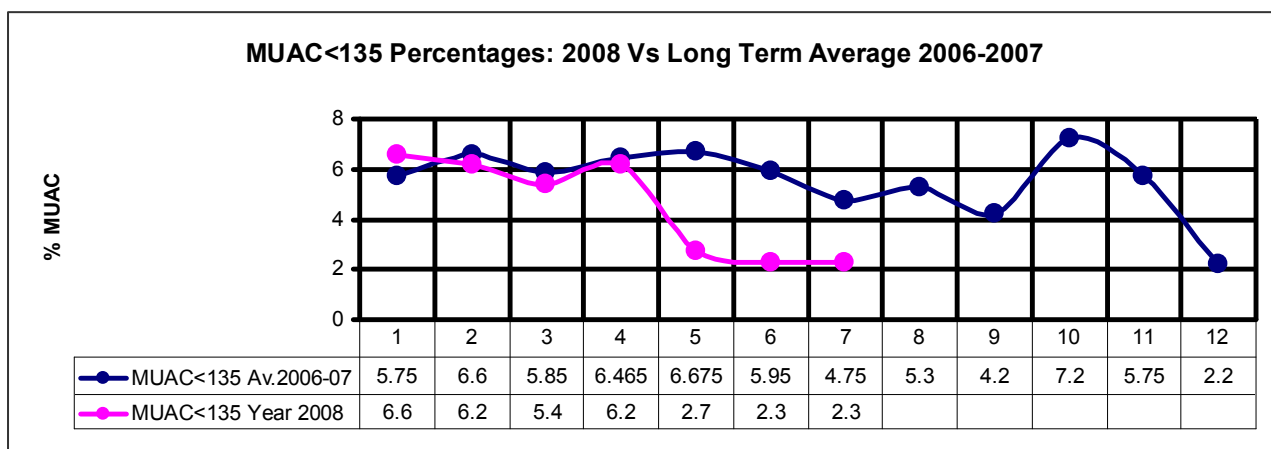
- Casual labour was the main source of income during the month, accounting for 61 per cent of the total household income, which is higher than last month's at 58.7 per cent.
- The highest rate was recorded in the mixed farming: food crops/cash crop livelihood zone and the lowest in the livestock livelihood zone.
- Other sources included petty trading (13 per cent) and formal employment (6.9).

##### 4.4 Implication on food security

- There was no major shift in income sources, which indicates that food security in the district was normal.

#### 5.0 Utilisation

##### 5.1 Nutrition status



- The percentage of children at the risk of malnutrition (using the MUAC measurement) remained same as last month at 2.3.

- The situation stabilised due to incoming harvest season and vitamin A supplements and health education by Ministry of health, alongside relief food distribution.
- The livestock farming livelihood zone reported the highest percentage 3.3 per cent, with the mixed farming: food crops/cash crop livelihood zone reporting the lowest at 0.6.

## **5.2 Health**

- No major disease incidences were reported in the district.

## **5.3 Current interventions**

- KRCS is distributing food to farmers affected by floods. The food includes 1,500 bags (90kgs) of maize, 270 bags (90kgs) of beans and 270 bags (50kgs) of rice.

## **6.0 Recommendations**

- The Ministry of Agriculture to conduct trainings on proper post-harvest handling techniques to ensure harvested crop is handled properly.
- Kenya Wildlife Service to intervene and end human/wildlife conflicts across the district to reduce crop damage by animals, especially during the harvest season.