

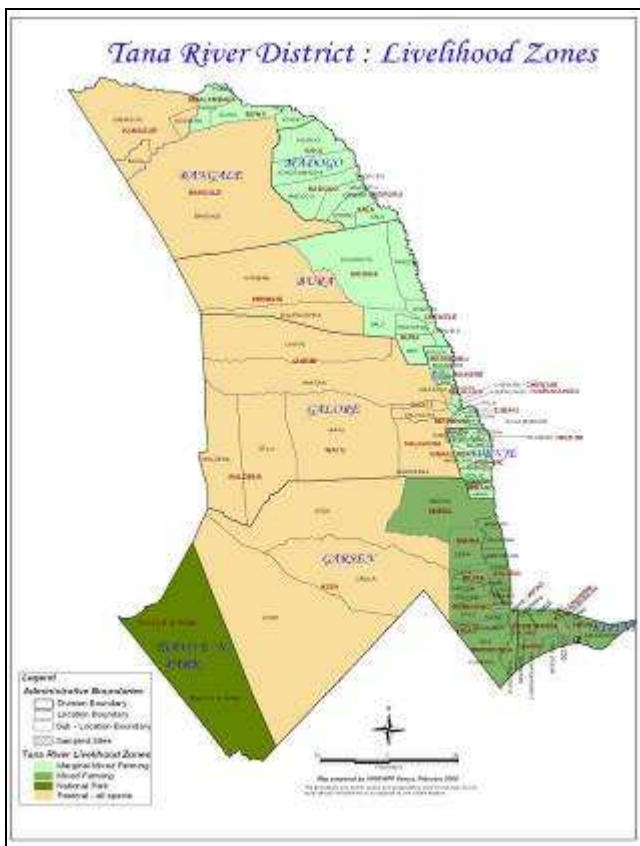


**OFFICE OF THE PRIME MINISTER
MINISTRY OF STATE FOR DEVELOPMENT OF NORTHERN KENYA AND OTHER ARID LANDS
ARID LANDS RESOURCE MANAGEMENT PROJECT II**

DROUGHT MONTHLY BULLETIN, JULY 2008

Tana River District

Warning Stages



LIVELIHOOD ZONE	STAGE	TREND
Mixed Farming Zone	Alert/Alarm	Worsening
Marginal Mixed Farming Zone	Alarm	worsening
Pastoral Zone	Alarm	Worsening
DISTRICT	Alarm	Worsening

Timeline activities

<ul style="list-style-type: none"> Milk yield drops Livestock move towards dry seasons grazing areas 			<ul style="list-style-type: none"> High milk yield Livestock move towards the traditional wet season grazing areas. High Calving and lambing rates. 			<ul style="list-style-type: none"> Low milk availability Livestock move towards the fall back dry seasons grazing areas (riverine and delta) 			<ul style="list-style-type: none"> High Milk yield Livestock move back to the traditional wet season grazing areas. Calving rates increases 		
Short dry spell			Long rains			Long dry spell			Short rains		
Jan	Feb	Mar	Apr	May	Jun	Jul	Aug	Sept	Oct	Nov	Dec
↓ Short rains harvest			↙ ↘ Planting/weeding			↓ Long rains harvest			↙ ↘ Planting/Weeding		

Situation overview

- Rains subsided in the marginal mixed farming and mixed farming areas, while pastoral areas continued to experience dry spells.
- Water availability deteriorated to critical in most of the hinterland pastoral areas including Assa, Wayu and Bangale, resulting in pressure on water sources.
- Quality and quantity of pasture and browse deteriorated in most parts of the district but remained fair in the (delta) mixed farming zone.
- Livestock body and health condition remained fair in most areas, while prices dropped but remained above the seasonal average.
- Food prices dropped slightly but were still unaffordable for most households.
- Milk production and consumption continued to decline at household level but no significant change was recorded in prices.
- CCPP remained endemic in most areas.
- Most of the crops planted at the onset of the rains were ready for harvesting, while the crop in areas that received rains late was at gold maturity.
- Most of the crop in the marginal mixed farming wilted before maturity due to harsh weather, while crops in the mixed farming livelihood zone were affected by water logging in farms.
- The ongoing harvests are expected to improve food security slightly. However, this is likely to be short-lived as the yields are expected to only last for one to two months. This is because most farmers lost their crop either to floods or harsh climatic conditions.
- There was a slight improvement in the nutritional status of children below five years as the percentage at risk of malnutrition (based on MUAC measurement) dropped to 14.3 per cent from 15.1 last month.
- Migration of whole households and livestock was reported in dry hinterland pastoral areas towards the Delta, Chakama (Tana Delta/Malindi border), the border of Mwingi, Kitui and Mtomo districts and Tsavo East and Kora national parks.
- The migration resulted in tension in the affected areas.

Recommendations to DSG/KFSSG

- Food aid to continue in form of Food for Assets.
- Enhanced disease surveillance and vaccination to check livestock diseases, especially foot and mouth, which was reported in neighbouring districts.
- Enhanced supplementary and therapeutic feeding especially in flagged areas.
- Need to control wildlife to minimise human/wildlife conflict.

Current interventions

Non-food interventions

- Water and Sanitation activities by the Kenya Red Cross.
- Rehabilitation of Bura and Hola irrigation schemes going on.
- Water trucking to the most affected hinterland areas.

- Support to farming groups by provision of farm tools and pump sets by ALRMP-II.
- Support to Community-based organisations through ALLPRO, projects which include loaning/finance for poultry improvement, bee keeping, camel production, and livestock marketing.
- Regular provision of extension services to pastoral communities.

Food aid

- Food distribution under EMOP in Bangale, Madogo, Bura and Galole divisions targeting 37,457 beneficiaries.
- Foods for Assets – three proposals have been screened and are awaiting implementation in Galole division. Exercise to roll out in other areas.
- Supplementary and therapeutic feeding programmes in hospitals and outreach programmes by the MOH, UNICEF, WFP and Red Cross.
- School feeding programme in all primary schools.
- Food aid by GOK to be distributed to needy areas in Tana Delta and Tana River.

1.0 Environmental indicators (stability)

1.1 Rainfall

- Rains subsided substantially in marginal mixed farming and mixed farming zones.
- The pastoral areas continued to be dry.

Rain fall figures recorded in respective livelihood zones are as below

Zone	Amount in mm	
	June	July
Mixed Farming Zone (Garsen/Kipini)	106.0m m	18.6mm
Marginal Mixed Farming Zone (Hola)	48.3mm	0.0mm
Pastoral Zone (Wayu/Bangale)	44.0mm	0.0mm

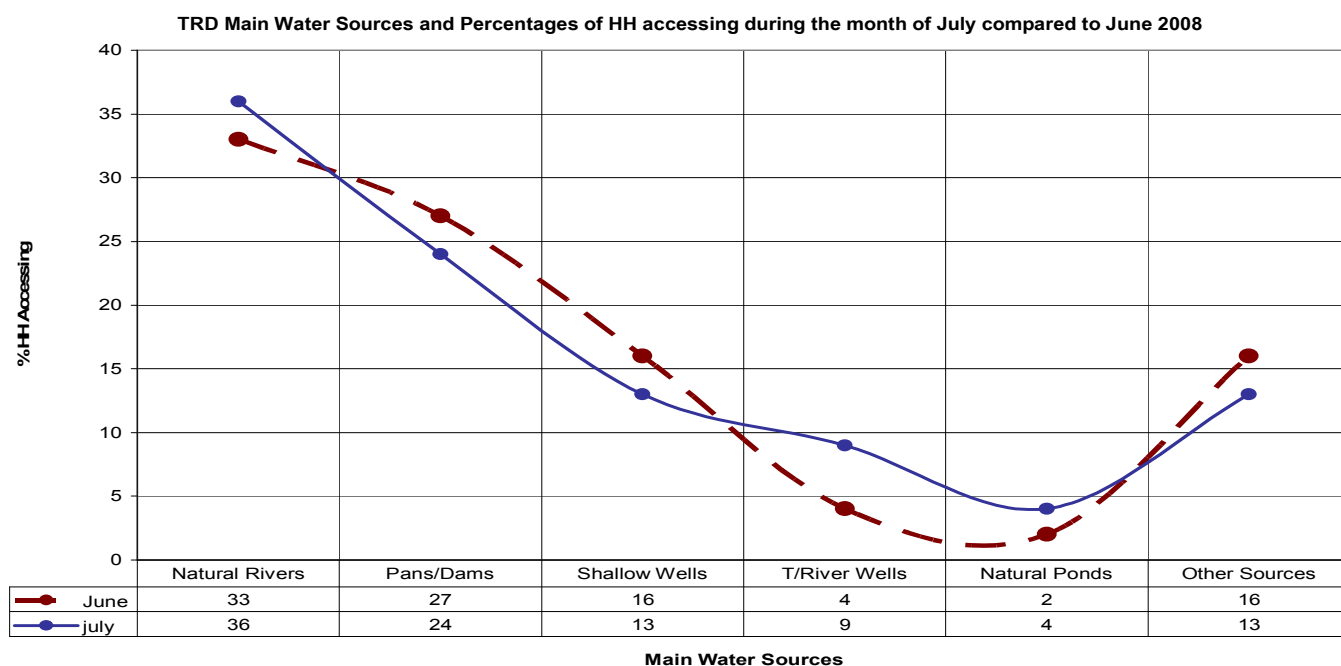
- Temperatures were relatively low, with records of between 22 to 25°C.

1.2 Condition of natural vegetation and pasture

- Condition of pasture and browse was reported to be deteriorating in the marginal mixed farming and pastoral areas.
- Though the forage was fair in the mixed farming zone, it is expected to run out earlier than normal due to pressure resulting from influx of livestock from the north and pastoral areas of Bura, Assa, Waldena and Wayu.
- Distance to grazing areas from water sources ranged from 4 to 7km. The distances are expected to increase as water sources continue to dry up in the traditional grazing areas.

1.3 Water sources and availability

- Water availability deteriorated to critical in hinterland pastoral areas of Assa, Wayu and Bangale, where water trucking has already started.
- Average distances to water sources are expected to increase drastically once traditional water sources dry up.



1.4 Emerging issues

- None

1.4.1 Insecurity/conflict /human displacement

- Tension is high insecurity tension is being experienced in the areas where
- High influx of livestock heightened tension along the borders with Mwingi, Kitui, Mtomo, Chakama in Malindi and riverine and Delta areas.
- Crop destruction in marginal mixed farming areas of Madogo and Bangale was registered as one of the factors that contributed to food insecurity in the areas.
- Other widely reported forms of human/wildlife conflict were attacks on humans and livestock by hyenas, lions and crocodiles.

1.5 Migration

- The climatic conditions experienced in the pastoral livelihoods forced earlier than normal migration towards Chakama, Galana Ranch, Tsavo East national park and the delta.
- More than 300 households were reported to have migrated and settled in different parts of the delta.

1.6 Implications on food security

- The ongoing climatic conditions might impact negatively on food security as livestock body conditions are expected to weaken and directly affect yields and prices.

2.0 Rural economy indicators (food availability)

2.1 Livestock production

2.1.1 Livestock body condition

- Livestock body and health conditions were fair in all livelihood zones.
- However, body stress may be inevitable following long distances in search of water and pasture.

2.1.2 Livestock diseases

- Though no major livestock disease outbreak was reported, CCPP remained endemic in most areas.
- There is high alert for foot and mouth, which was reported in neighbouring districts of Garissa and Ijara.

2.2 Milk production

- A decline in milk production was recorded at household level. The situation could be attributed to inadequate pasture and migration from normal settlements.

2.3 Crop production

2.3.1 Timeliness and condition of various crop productions

- Most of the crops planted at the onset of the rains are ready for harvesting, while those in areas that received rains late are at gold maturity.
- Most of the crop in the marginal mixed farming withered before maturity due to harsh climatic conditions, while crop in the mixed farming zone was destroyed following water logging in farms.

2.3.2 Pests and diseases

- No outstanding incidences of pests and diseases were reported.

2.3.3 Harvests

- Harvesting of maize and legumes went on in areas that were not affected by drought and floods.
- Crop production was affected by erratic and below normal rainfall and floods, leading to rise in food prices.
- Yields are expected to drop by 60 per cent in the marginal mixed farming livelihood zone and by 30 per cent in the mixed farming zone.

2.2.4 Implication on food security

- Ongoing crop harvests are expected to slightly boost food security in most agro-pastoral areas.
- However, this is expected to be short lived due to poor yields in marginal mixed farming zone and water logging in mixed farming livelihood zone.

3.0 Access to food

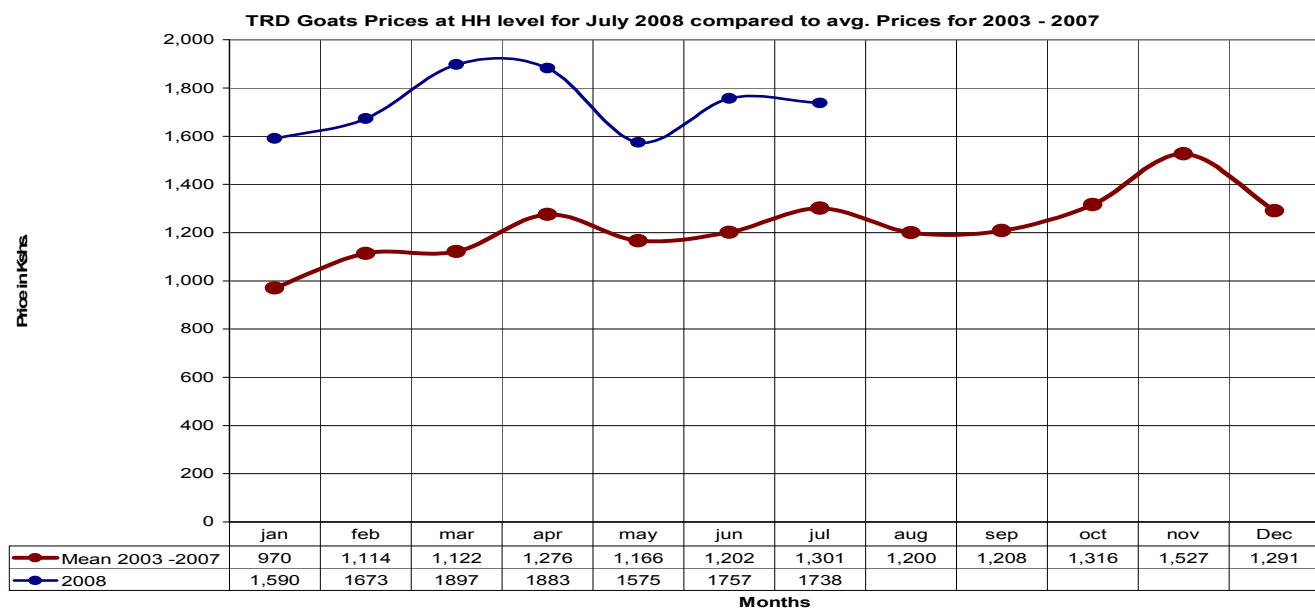
3.1 Livestock marketing

3.1.1 Cattle prices



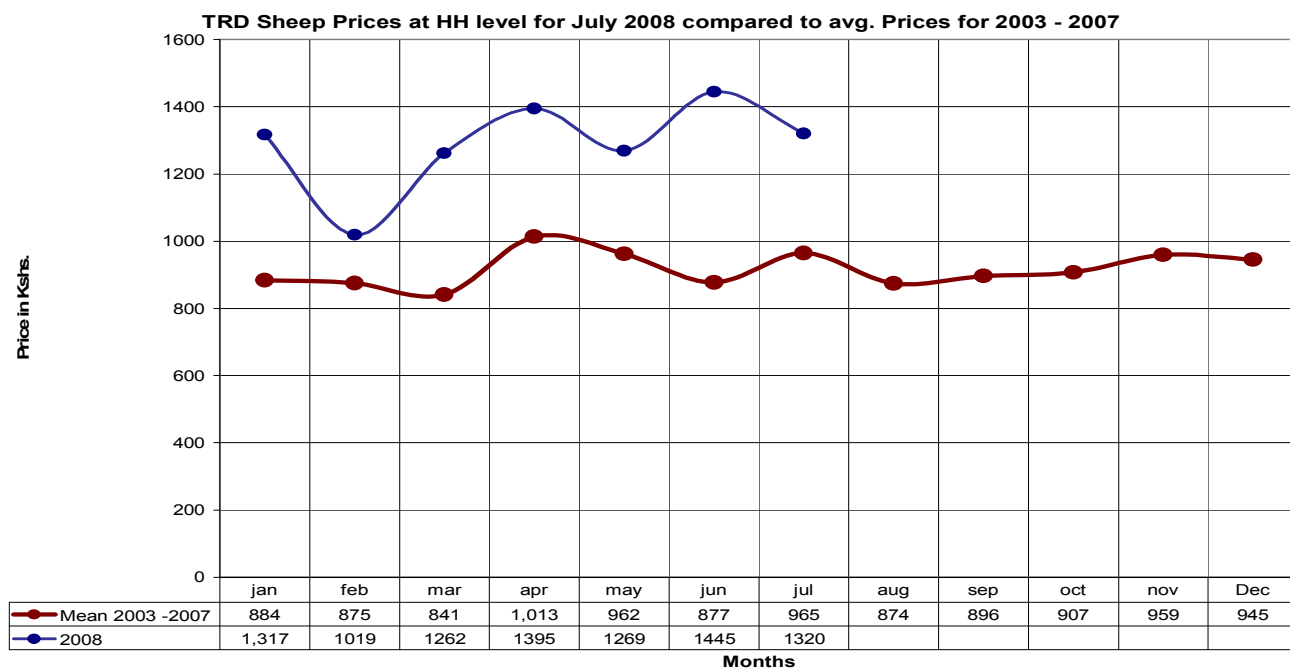
- Cattle prices dropped to Ksh 8, 383 from Ksh 8, 800 in June.
- This was above the long term seasonal average of Ksh 6,663 recorded during the 2003 -2007 period.
- The drop could be attributed to effects of the beginning dry spell and market dynamics.
- Current favourable body conditions are expected to fetch higher prices than the season average.

3.1.2 Goat prices



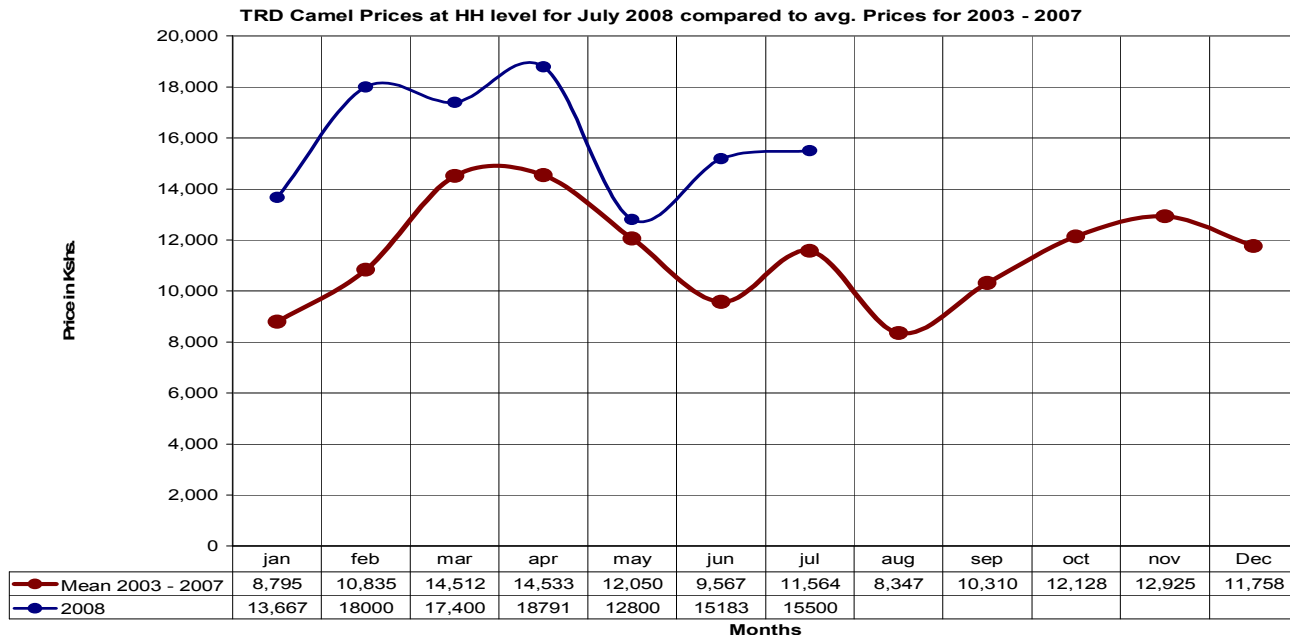
- No significant change was recorded in goat prices, with only a slight drop to Ksh1, 738 from Ksh1, 757 the previous month.
- The price was, however, higher than the long term seasonal average price of Ksh1, 301 recorded between 2003 and 2007.

3.1.3 Sheep prices



- Sheep prices declined to Ksh1,320 from Ksh1,445 last month.
- The price was above the seasonal average of Ksh 965 registered between 2003 and 2007.
- High prices are expected due to the current favourable body conditions, followed by a decline as the dry spell sets in.

3.3.4 Camel prices



- Camel prices rose slightly to Ksh15, 550 from Ksh15, 183 of last month.
- The terms of trade were better than the long term seasonal average price of Ksh11,564 between 2003 and 2007.
- The trend may continue since market conditions are still favourable and body conditions good.

3.3.5 Livestock sales

- There was a general decline in sales rate of almost all the livestock species.
- This is normal at this time of the year; but the situation is expected to change as pastoralists dispose of more stocks during the drought spell.

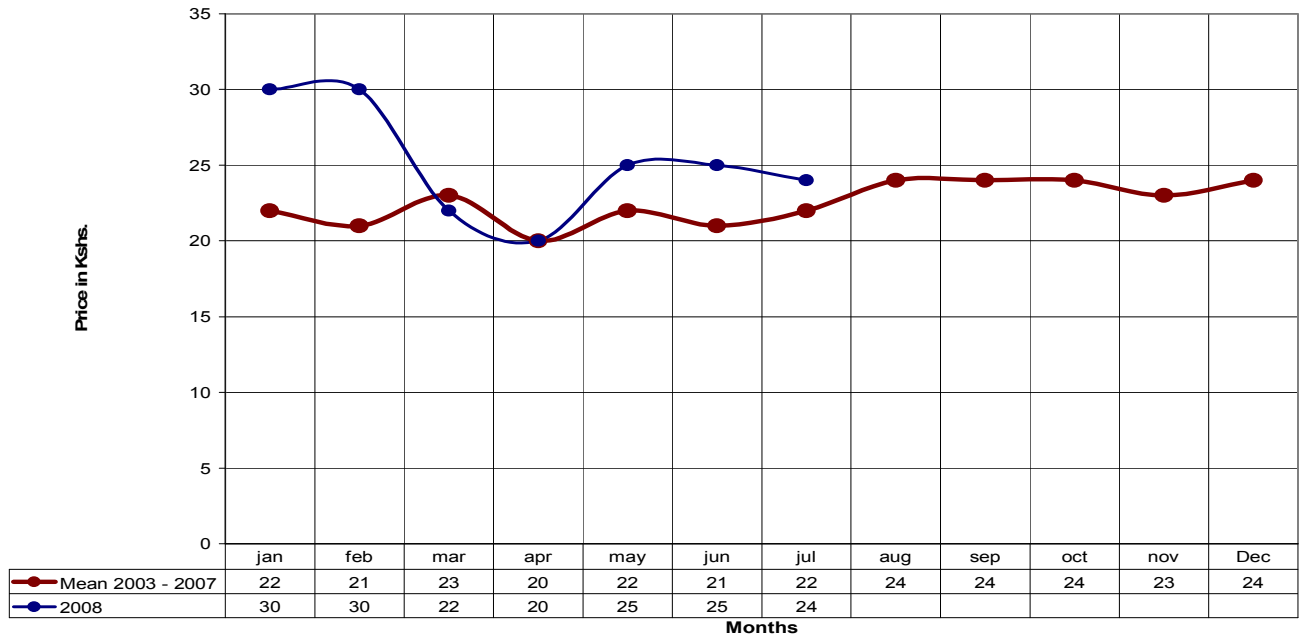
3.3.6 Milk consumption

- Milk consumption dropped at household level due to decline in milk yields following livestock migration from normal settlements.

3.2 Food prices

3.2.1 Maize prices

TRD Maize Prices at HH level for July 2008 compared to avg. Prices for 2003 - 2007



- Maize prices dropped to Ksh 24 from Ksh 25 in June.
- The price was higher than the seasonal average of Ksh 21 between 2003 and 2007.
- The prices are expected to decline further owing to the ongoing harvests.

3.3 Income

3.3.1 Crop income

- Income from crop sales rose from 6 per cent in June to 7.3 per cent.
- This could be due to ongoing sale of green maize in some agro-pastoral areas.

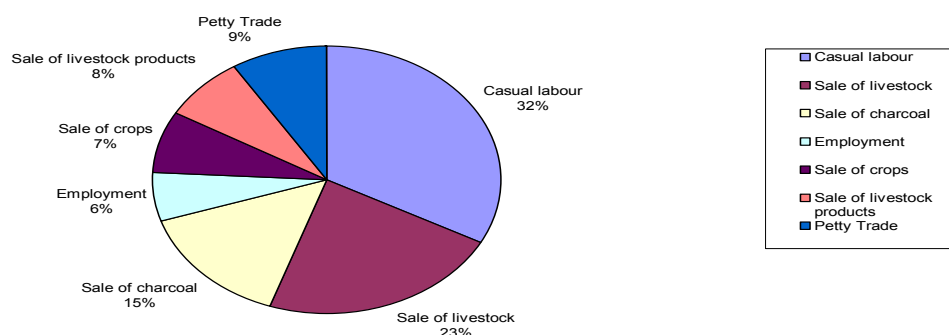
3.3.2 Livestock income

- Income from sale of livestock and livestock products dropped to 30 per cent from 31.

3.3.3 Other income

- Other sources of income for households were casual labour (32 per cent), sale of charcoal (15), petty trade (9) and employment (6).

TRD Main Sources of Income at HH level for the Month of July 2008



3.4 Implication on food security

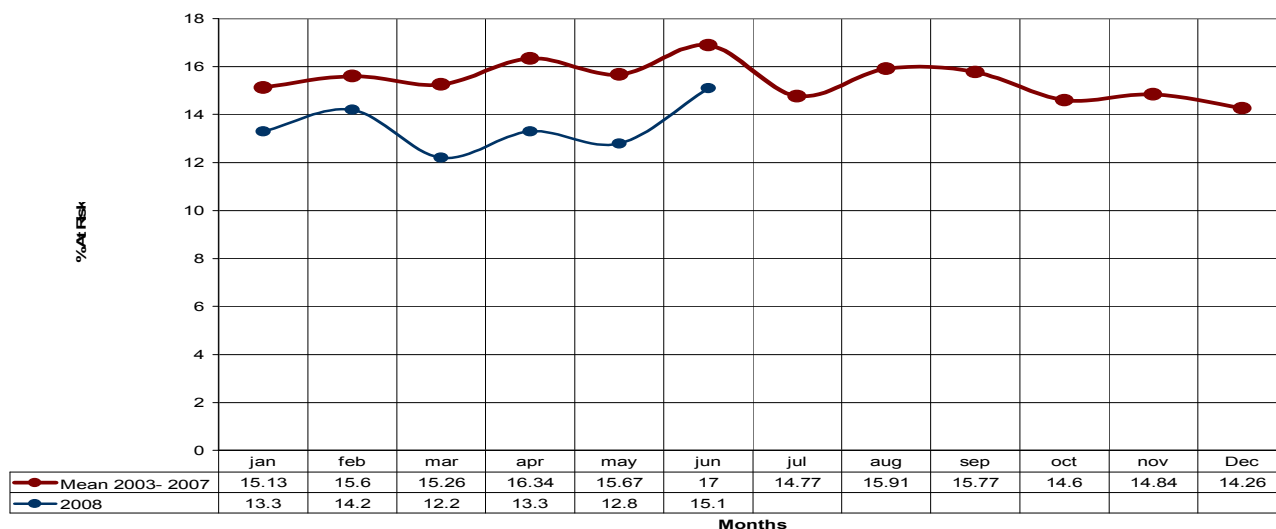
- The economic indicators show no positive impact on food security.
- Though there was a slight improvement in income from crops, livestock prices dropped and food prices remained exorbitant.

4.0 Welfare indicators (utilization of food)

4.1 Nutrition status

- There was a slight improvement on the child nutritional status as
- The percentage of children under five years rated as being at risk of malnutrition (based on MUAC) dropped to 14.3 per cent from 15.1 last month.
- However, the overall percentage of children rated as being at risk of malnutrition was lower compared to the long term seasonal mean of 14.77 registered between 2003 and 2007. It was also rated below the emergency thresholds.
- Bangale division reported the highest percentage at 29.4 from 24.1, Bura 28.3 from 26.6 and Galole 16.7 from 17.2.

TRD % of under-fives categorized as being At Risk of Malnutrition for June 2008 compared to avg. for 2003 - 2007



4.2 Human health

- Malaria remains the leading cause of mortality in the district for both children and adults.
- Other diseases reported were upper respiratory infections, pneumonia, diarrhoea and skin disorders.

5.0 Current interventions

5.1 Non-food interventions

- Water and Sanitation activities by the Kenya Red Cross.
- Rehabilitation of Bura and Hola irrigation schemes going on.
- Ongoing construction of dams at Doke and Kamagur by ALRMP II
- Support to community-based organisations through ALLPRO projects, which include loaning/finance for poultry improvement, bee keeping, camel production, and livestock marketing.
- Ksh 4.4 million was disbursed to 10 groups.
- Livestock disease surveillance.

Food aid

- Food distribution under the EMOP in Bangale, Madogo, Bura and Galole divisions targeting 37,457 beneficiaries.
- Foods for Assets – three proposals have been screened and are awaiting implementation in Galole division. Exercise to roll out in other areas.
- Supplementary and therapeutic feeding programmes in hospitals and outreach programmes by the MOH, UNICEF, WFP and Red Cross.
- School feeding programme in all primary schools.
- Food aid by GOK to be distributed to needy areas in Tana Delta and Tana River.

5.3 Coping strategies

- Migration to areas less affected by hazards/shocks.
- Charcoal burning.
- Reduction on number of meals.
- Remittances from working relatives.
- Petty trade.
- Resort to casual labour.

6.0 Recommendations

- Food aid to continue in form of Food for Assets. *Action: District Steering Group/Partners/Communities*
- Enhanced Livestock disease surveillance and vaccination across the district.. *Action: DVO/District Steering Group/Partners/Communities*
- High alert for foot and mouth disease, which was reported in neighbouring districts.

- Need to carry out vaccination campaigns following reported CCPP cases in many parts of the district. **Action: DVO/District Steering Group/Partners/Communities**
- Enhanced supplementary and therapeutic feeding, especially in the flagged areas. **Action: MOH/District Steering Group/Partners/Communities**
- Control of wildlife to minimise human/wildlife conflicts. **Action: KWS/District Steering Group/Partners/Communities.**