



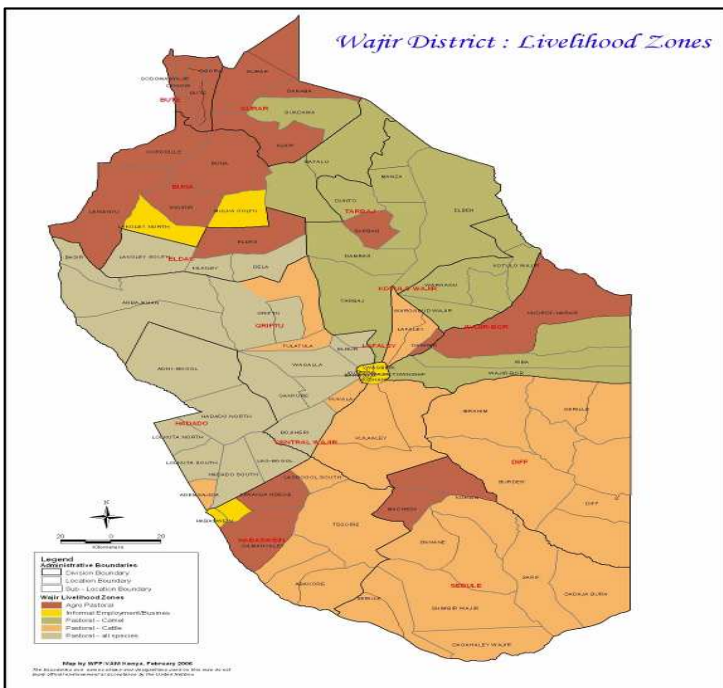
**OFFICE OF THE PRIME MINISTER**  
**Ministry of State for Development of Northern Kenya and other Arid Lands**

**Arid Lands Resource Management Project II**

**DROUGHT MONTHLY BULLETIN, JULY 2008**

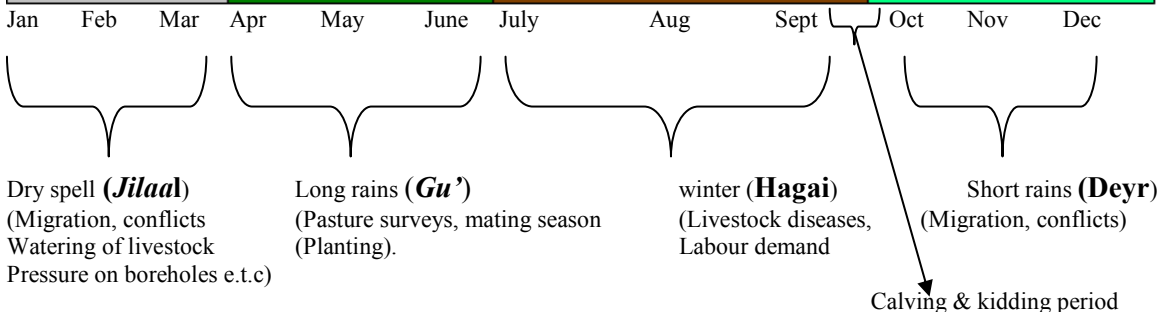
**Wajir District**

**Warning Stages**



LIVELIHOOD ZONE	WARNING STAGE	TREND
Pastoral – All Species	ALERT	Worsening
Pastoral – Cattle	ALARM	Worsening
Pastoral – Camel	ALERT	Worsening
Agro – Pastoral	ALERT	Worsening
Informal Employment/Business	ALARM	Worsening

**TIME LINE**



### **Situation overview**

- No rainfall was recorded during the month under review.
- Milk supply has gone down due to depletion of pasture and browse, pushing up prices to between Kshs 30 and 45 per 750 ml bottle.
- Quantity and quality of pasture and browse have dropped and average grazing distance has increased to 10.2 km.
- Availability of water is diminishing, with 83 pans already dried up. More centres are now on water tracking including; Ogorji, Dugo, Iresteno, Lekole North, Lesayu, Grille, Handaki, Lolkuta North, Boji, Adan Awale, Lekole South, Wajir Bor, Belatul Amin, Gunana and Majabow.
- Livestock influx from neighboring Mandera district and Somalia has led to faster depletion of pasture and water.
- Prices of foods such as maize, rice and wheat flour have continued to rise in rural markets.
- Top causes of morbidity and mortality are malaria, pneumonia, diarrhoea, intestinal worms and malnutrition.
- 12 cases of kalazaar are undergoing treatment at the District hospital while 70 more have been treated and discharged.
- Conflicts over water and pasture are common, especially at water sources.
- Animal prices are stable but the ongoing quarantine on shoats due to a *peste des petit ruminant* (PPR) outbreak has affected the per capita income of the pastoral communities. The outbreak left 35,000 animals dead and 30,000 have been vaccinated.
- Though immunization coverage stands at 54.3 per cent and vitamin A supplementation 43.2 per cent, cases of malnutrition have risen. 13.9% of Chanis sampled children are malnourished, 19.1% Habaswein and 5.8 per cent of Gurar are under weight.
- General Food Distribution is still ongoing, with target coverage of 20 per cent in central, Griftu 25, Bute 29, Eldas 39, Hadado 39 and Sebule 20 of 20 per cent. The target is 139,893 people in the district.
- The Food for asset (FFA) program is ongoing and the District project Steering Committee has so far approved eight FDP to start the program. These include Burder, Beramo, Mansa and Anole, Kutulo, Basir, Gurar and Biyamatho. The project targets all the 115 GFD. A DSG rapid assessment ranked Wajir-Bor, Bute, Griftu and Diif as poor, Eldas, Gurar, Tarbaj and Sabuli as moderate and Hadado, Buna, Kutulo, Habaswein and central as normal.

### **Recommendations by DSG to KFSSG**

- Protection of shallow wells in the district.
- Repair of water buzzers.
- Transition from GFD to FFA as a long term plan.
- Regular disease surveillance along the borders and endemic areas.
- Drilling of boreholes in centers without reliable water sources.

- Hygiene and sanitation sensitisation through health education, campaigns and PHAST training.
- Strengthen livestock disease surveillance and management system.
- Increase the number of extension service providers (specialized in dry land farming) staffing level at Ministry of Health and Education.
- Desilting of existing water pans (120 in the district).
- Purchase of stand by submersible pumps.

### **Current Interventions**

The following are the interventions carried out in the district;

#### **Food aid**

- Emergency operation by World Food Program through the implementing agencies Aldef-Kenya and Wasda.
- Supplementary feeding program to children below five years and support to other vulnerable children by Merlin and SFP.
- School feeding program and therapeutic feeding program by Merlin.

#### **Coping strategies**

- Sale of firewood, miraa, gum, resins and quarry products, charcoal burning and purchasing food on credit.

#### **Non-food aid**

- Ad hoc vaccination against PPR.
- De-silting of pans through FFA program.
- Mobile VCT services supported by APHIA II.
- Construction of VIP toilets by KRCS Wajir branch and conducting of other health related diseases.
- Participatory epidemiology of hemorrhagic-septicemia in camels.

### **Current DSG recommendations**

- The DSG approved ALRMP annual work plan, Hunger and Safety Net program, which is targeting about 16,000 people in the first year and 175,000 in ten years.
- KFSSG assessment was carried out in the district and the need for FFA instead of GFD emphasized.
- Repair of water buzzers to necessitate emergency water supplies.
- Close monitoring of food security indicators and review of PPR quarantine.

## **1. Environmental indicators (stability)**

### **1.1 Rainfall**

- No rainfall was recorded during the month under review.

### **1.2 Natural Vegetation, Forage and Pasture**

- The quantity and quality of pasture, forage and vegetation covers are deteriorating due to influx of animals from Mandera district, Eastern province, and Somalia.

### **1.3 Water source and availability**

- Most of the water used at household level and for livestock is mostly from pans, dams, shallow wells and bore holes. Most of the pans and dams have dried up, leaving a walking distance of between 10.2 -30 km to livestock water sources.

#### **1.3.1 Household accessibility to water**

- The accessibility of water at household level is estimated to be at a distance of between 5 and 10 Km and mainly sourced from shallow wells, pans and dams.

#### **1.3.2 Livestock access**

- Animals are still accessing water at a distance of 20-30 km and the trekking distance keeps on increasing as the season progresses.

### **1.4 Emerging issues**

- Outbreak of Kalazaar
- Insecurity along the Kenya-Somali border
- PPR outbreak
- Breakdown of bore holes
- The PPR quarantine has aggravated the terms of trade, impacting heavily on lower strata pastoral vulnerable households with low purchasing power. There is need to support various emergency initiatives interventions.
- Influx of pastoral communities from Mandera and Somalia.
- Increase of essential commodity prices, including cereals and commercial goods.

#### **1.4.1 Insecurity**

- Few conflicts over water but major cases of insecurity.

#### **1.4.2 Migration**

- There is inward migration of pastoralists from neighboring Mandera and Moyale districts and Somalia. Animals are now concentrated in Wajir Bor, Gerile, Tarbaj, Griftu Sebule and Gurar.

### **1.5**

#### **Implication on food security**

- Low milk prices.
- Production of small garden crops.
- Improved livestock body condition and good livestock prices will have a positive impact on food security.
- Declining trends and low crop production due to rain failure will have a negative impact on food security in the district.

## **2. Rural indicators (Food availability)**

### **2.1 Livestock production**

- There is very little animal production due to shrinking water sources. Outbreak of PPR has affected young shoats, which will in turn impact negatively on the pastoralist community.

#### **2.1.1 Livestock body condition**

- The good body condition the animals gained from last season's good pastures and browse risks deteriorating, especially if the short rains are not timely and adequate.

#### **2.1.2 Livestock Diseases**

- PPR is still a threat to shoats in the entire district, but the most affected areas are Hadado, Tarbaj, Griftu, Wajir Bor and Buna.

#### **2.1.3 Milk production**

- Milk production is dropping following diminishing pasture and browse. The average market of a 750ml bottle of milk is between Kshs 35-40.

### **2.2 Crop Production**

- Crops such as maize and millet have withered due to inadequate rainfall and the fact that farmers planted late. However, small garden farming is being practiced in Wajir central and other areas by use of small irrigation pumps and hand dug pans.

#### **2.2.1 Timeliness and condition of crop production**

- Inadequate rainfall has led to crops withering.

#### **2.2 Pests and Diseases**

- No pests or diseases reported.

#### **2.2.3 Harvest**

#### **2.2.4 Implication on food security**

- Irrigation farming by use of solar energy needs to be strengthened to improve food security in the district.
- EMOP is on going with subsidiary relief food from Office of the president.
- School feeding program and TFC are among support mechanisms in place.

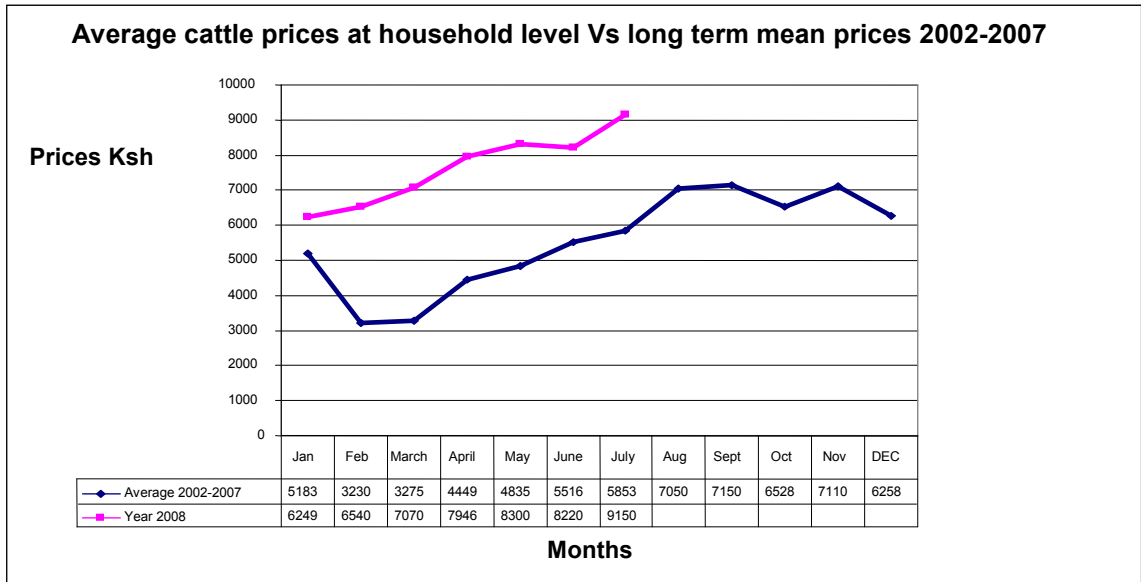
### 3. Access to Food

#### 3.1 Livestock marketing and sales

- Livestock prices are generally good but the PPR outbreak in shoats and subsequent quarantine led to closure of market.

##### 3.1.1 Cattle prices

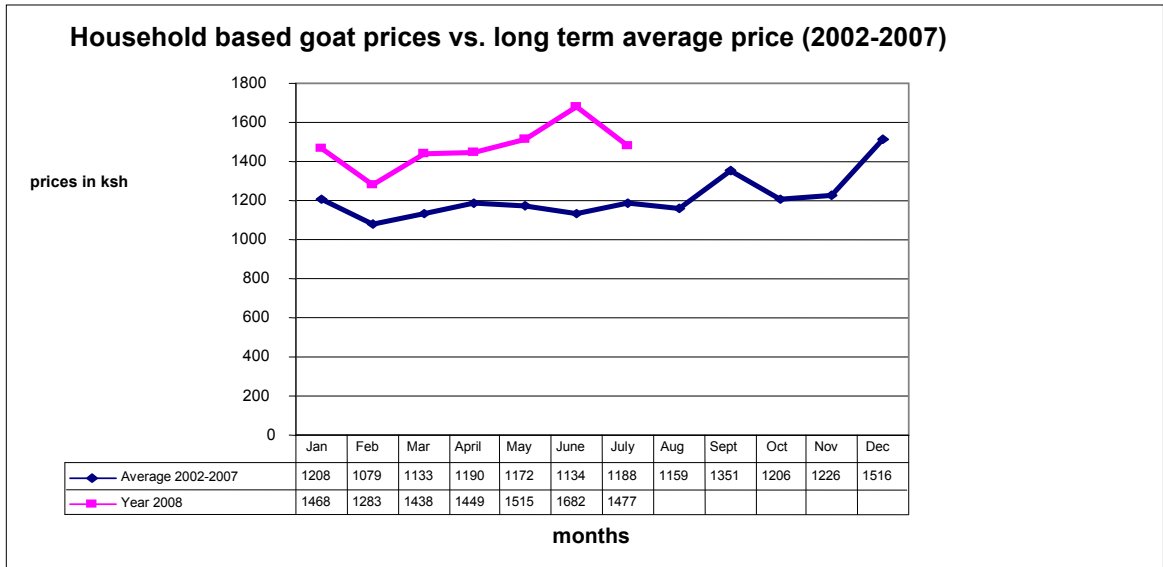
- The price of cattle has increased from Kshs 8, 220 to 9,150 as a result of a good market at Ethiopia.



##### 3.1.2 Goats prices

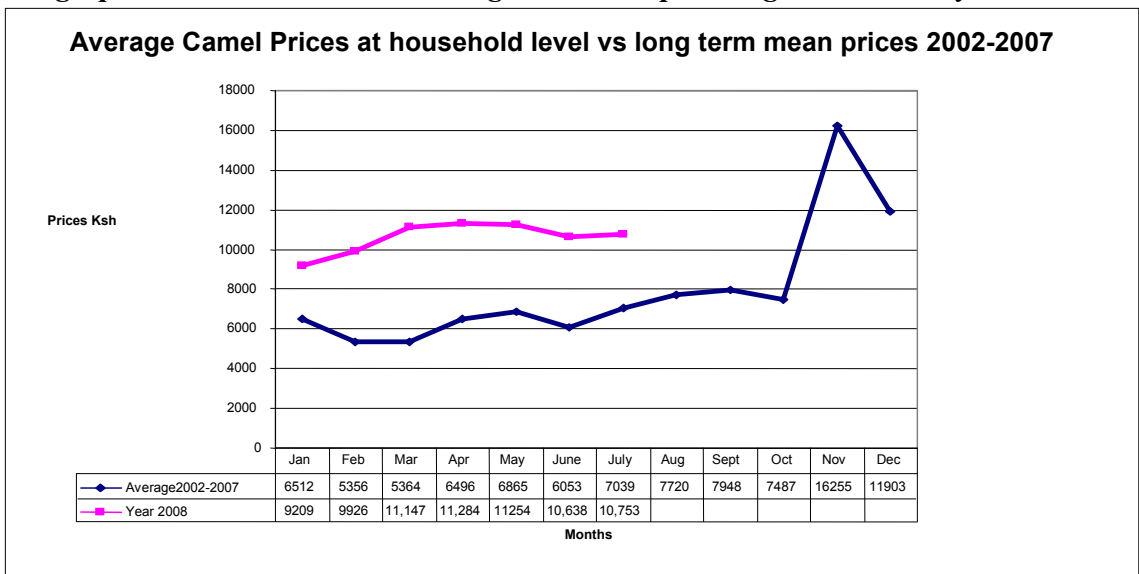
- Goats prices have fallen following PPR outbreak and quarantine that led to market closure. Goat's prices fluctuated from Kshs 1682 for the month of June to Kshs 1477 in July. The prices however remains within the normal ranges compared to the established long term mean.

*The graph indicates Goat long term mean prices against current year 2008*



### 3.1.3 Camel prices

*The graph below indicates Camel long term mean prices against current year 2008*



- Camel prices have increased since the animal body condition is stable despite longer distance to water.
- Animals from Mandera district are weak and emaciated since pasture is inadequate.
- The Kenya-Somalia border is still closed and few are transported to other parts of the country for meat.
- The Ethiopian market is a boost to the pastoral community.

### 3.2 Livestock sales

- Generally the sale of livestock is average due to outbreak of PPR in goats and shoats and subsequent closure of market.

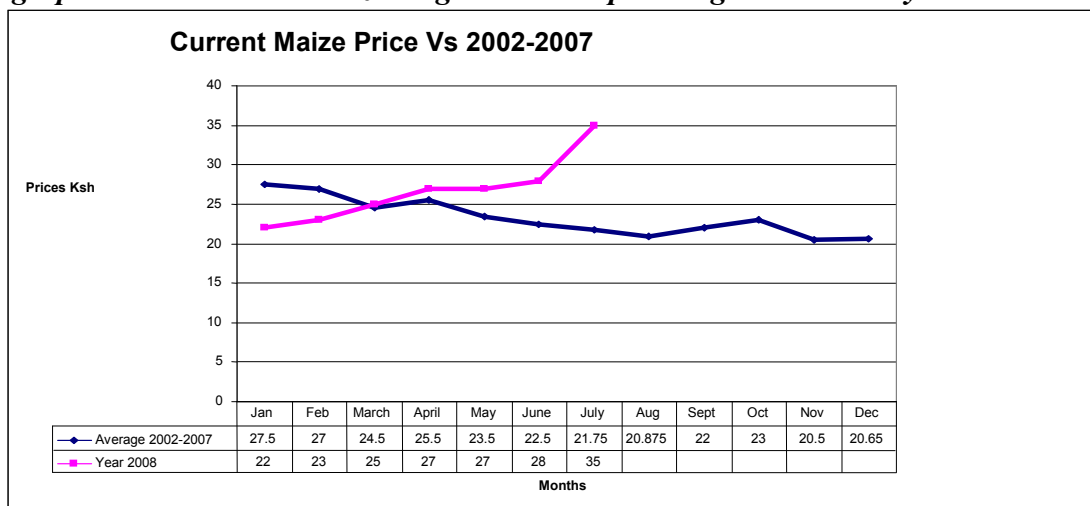
### 3.3 Milk consumption

- Milk consumption is average since the price is escalating.

### 3.4 Crop prizes

#### 3.4.1 Maize

*The graph below indicates maize long term mean prices against current year 2008*

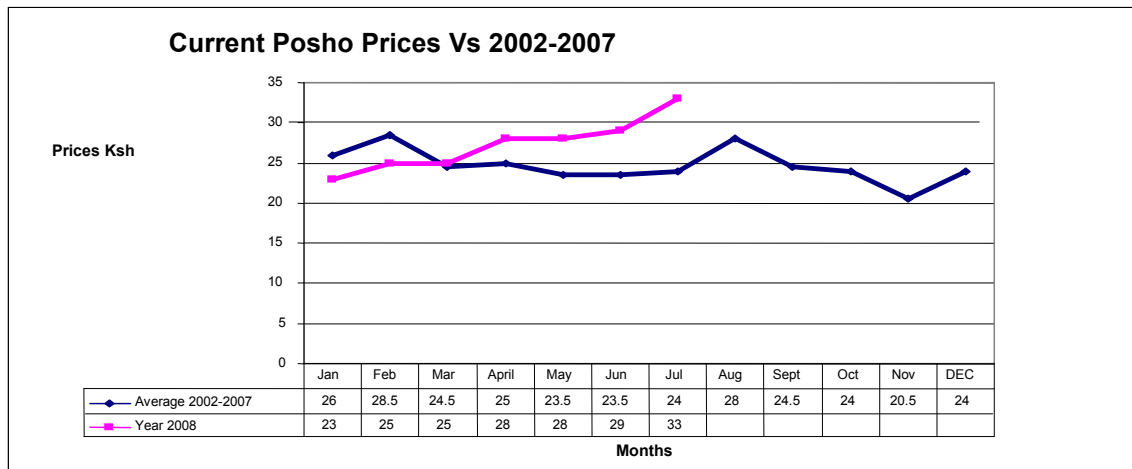


The prices for maize of 1 kg have increased tremendously as all prices of cereals have also increased at the local market.

#### 3.4.2 Posho price

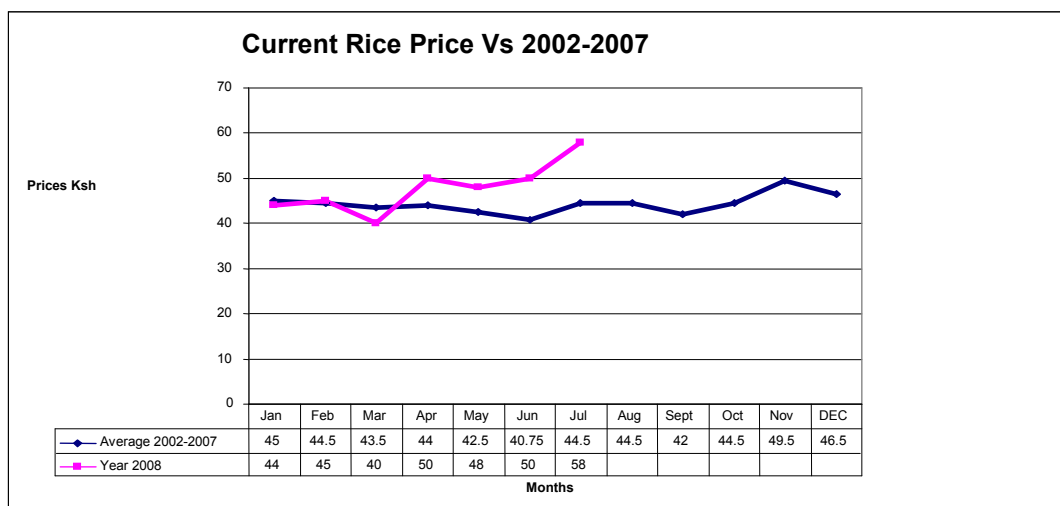
##### Posho (Maize meal)

- The price of posho, which is a staple food in the community, has increased on the local market.



### 3.4.3 Rice

*The graph below indicates long term mean prices of rice against the current year 2008.*



- The price of rice has also increased compared to the previous month. This is partly because rice is not given as relief food, leading to price hikes in the local market.

## 3.5 Income

### 3.5.1 Crop income

- Kitchen farming using small irrigation pumps especially at Wajir central are alternative source of income and are widely sold in the local market.

### 3.5.2 Livestock income

- The only income from livestock is currently from products such as milk and ghee. Though market prices are good, the pastoralists value large herds and are therefore hesitant to sell their animals.

- However, in small business livelihood zone, most people engage in livestock trade as brokers, middlemen or small scale traders and sale of quarry products. Hides and skin are also transported to outside local market.

### 3.5.3 Other income

- Hawking, selling of Miraa, quarry, fetching firewood and other casual labour offer alternative sources of income especially in Small business/informal livelihood zones.
- Though the general income is still low, production and sale of gum and resin are also commonly practiced.

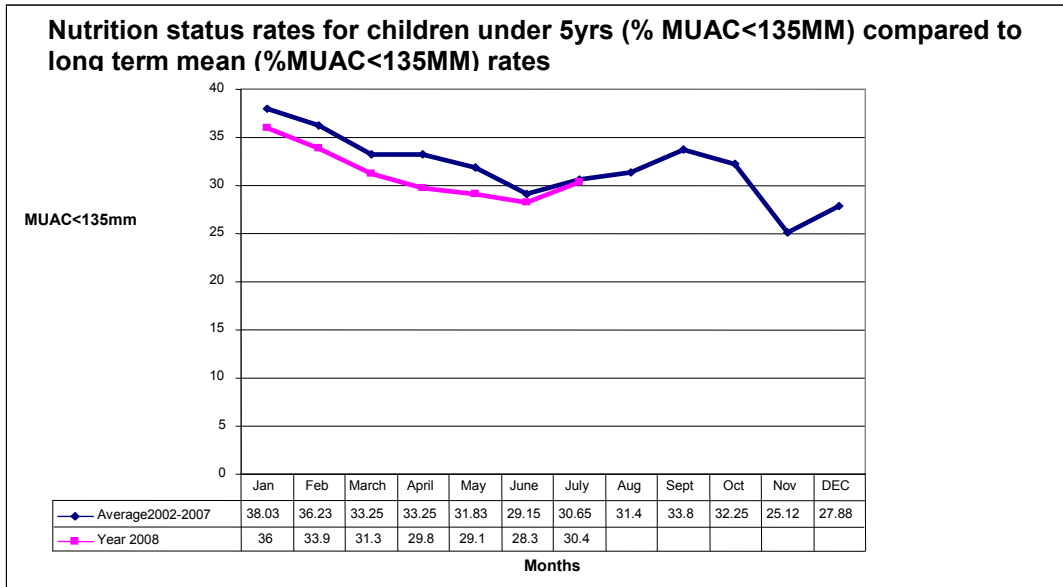
### 3.6 Implication on food security

- GFD Phase seven is continuing with a target beneficiary of 139, 893 people out of the total population of 520, 20 in Wajir District. The last assessment ranked Tarbaj, Hadado, Wajir Bor and Sebule as the most food insecure.

## 4.0 Welfare (utilization of food)

### 4.1 Nutrition status

- The percentage of malnourished children under five years using MUAC (<135MM) has risen due to increasing milk and cereal prices, making them out of reach by many.



### 4.2 Health

- The highest causes of morbidity and mortality District are still malaria, URTI, diarrhea diseases and malnutrition.
- Cases of Kalazaar are still undergoing treatment at the District hospital. Though most of the cases are from neighboring Isiolo District and a few others from Arbajahan and Eldas, disease surveillance has been strengthened.

#### **4.3 Flagged areas**

- Upsurge of Kalazaar may undermine nutrition status of children under five years.
- Worms and ticks infestations were reported as common problems in the district.
- Attacks by wild animals such as lions and hyenas are rising.

### **5. Current interventions**

#### **5.1 Non-food interventions**

- Credit scheme used as revolving fund by Aldef Kenya (NGO).
- Support to mobile school education through ALRMP and MOEST.

#### **5.2 Food Aid**

- EMOP relief food distribution by WFP through lead agency, Oxfam and implementing partners (ALDEF & WASDA) is ongoing.
- Outpatient therapeutic feeding and supplementary feeding Programmes (TFC) by Merlin at Wajir district hospital and all the thirteen Division.
- Basic relief support from OOP especially to vulnerable groups.
- FFA-food for asset program.
- Hygiene and sensitization activity by Oxfam GB.

#### **5.3 Other coping strategies**

- Restricting specific watering points, especially dams and ponds, that are close to settlements for human use.
- Sale of quarry products for income generating activities.
- Reduction of number of meals per day.
- Most of the communities borrow non-food items on credit from shops as a coping strategy.
- The community sells natural resources like gum and resins as a source of alternative livelihood.
- Sale of animals, especially the burden animals, during this period to pay for subsidiary expenses such as fuel.

### **6.0 Recommendations**

1. Mass treatment and vaccination of livestock against diseases, especially shoats. **(action DVO).**
2. Improvement in sanitation and hygiene promotion activities (action KRCS,OXFAM and DPHO).
3. Strengthening of disease surveillance along the border and curbing of Kalazaar at Arbajahan and Eldas.(DDSC) .
4. Support to orphan and vulnerable people through income generating activities and material support. (action ALRMP,DYO).
5. Strengthening of conflict Early warning and peace building initiatives. (action WPDA,ALRMP,OOP).
6. More hand pumps and solar assisted water supply system for shallow wells for schools and institutions
7. Provision of vector control chemicals and equipments i.e. Itns, Icons, Spray pumps and protective gear.
8. KWS to intervene in cases of human and wildlife conflict to reduce the menace.
9. Provision of more water kiosks at existing boreholes to help separate water points for humans and livestock.