

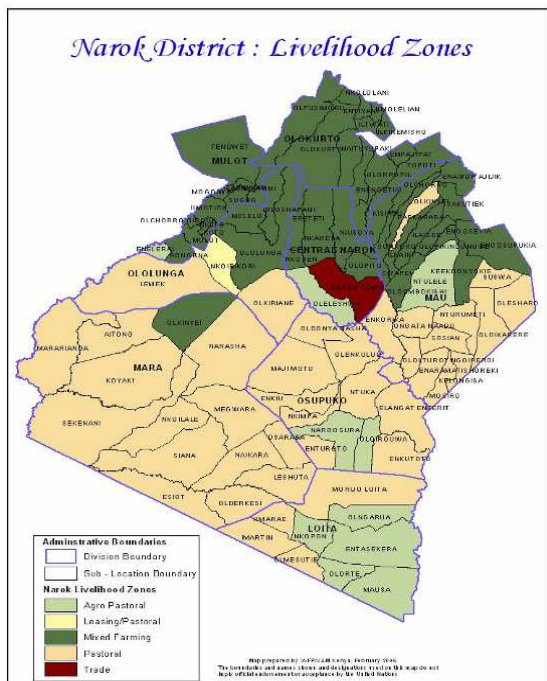


**OFFICE OF THE PRIME MINISTER
MINISTRY OF STATE FOR THE DEVELOPMENT OF NORTHERN KENYA AND OTHER ARID LANDS
ARID LANDS RESOURCE MANAGEMENT PROJECT II**

DROUGHT MONTHLY BULLETIN FOR MAY 2008

NAROK DISTRICT

WARNING STAGES



LIVELIHOOD ZONE	WARNING STAGE	TREND
AGRO PASTORAL Entasekera, Naroosura, Suswa	Alert	Declining
MIXED FARMING Nairragi-enkare, Mulot	Alert	Declining
PASTORAL Olmesutie, Ntuka, Mosiro, Koyiaki, Oletukat	Alert	Worsening
TRADE Narok Town	Normal	Declining
LEASING/ PASTORAL Lemek, Ololulunga	Alert	Declining
PASTORAL TOURISM Koyiaki, Siana	Alert	Declining

TIME LIME



January/February
March – short rains
harvest, long rains
planting, livestock
breeding (Cattle)

April, May/June
Long rains –
weeding, shoats
mating

July/August
Cold dry
season, long
rains harvest

Sept/October
Dry & hot-
migration of
livestock

November/Dec -
short rains –
calving lambing
and kidding

Situation overview

- No rains were recorded during the review month.
- The month was characterised by dry, cold and sunny intervals.
- This is not normal during this time of the year.
- The livestock body conditions have remained fair to good for all categories.
- Water conditions both for domestic and livestock use have declined both in quality and quantity. This especially true for the lower rangelands of Mara, Osupuko, Mosiro and parts of Central Divisions.
- The main sources of water have remained natural rivers, dams and pans.
- There is some relatively good pasture in form of standing hay. This is mainly in the pasture reserves and dry grazing zones.
- Cases of CBPP and CCPP have continued to be reported in areas of Mara, Loita, Osupuko and Central Division.
- Milk production has gone down due to low calving and kidding rates. Declining water and pasture conditions in the district also contribute to this.
- Livestock prices have slightly gone down compared to the previous months ranges (Ksh. 10,600, 1,800 and 1,300 for cattle, sheep and goats respectively compared to Ksh. 11,800, 1,500 and 1,500 for the same during the previous month).The likelihood is however that the prices will go down as the body conditions decline due to unfavourable weather conditions.
- Food prices have continued to go up significantly compared to the previous reporting period. On average a Kg of Maize is selling at Ksh.35.00, 60.00 and 40.00 for beans and posho respectively compared to Ksh. 34.00, 75.00 and 45.00 for the same during the previous month.
- There were no major human diseases reported during the review period
- The nutritional status for children under five years have declined during the review month, this is mainly attributed to the common cold that was rampant and the declining food security situation in the District.

Recommendation to District Authorities/DSG and National KFSSG

- There is need for more contingency funds for use in emergency water, disease and other food security related programmes.
- Continuous disease surveillance should be sustained in order to contain diseases outbreaks especially in areas where livestock are concentrated e.g. the upper parts of the district especially in the dry grazing zones of Mau, Mara, Loita.
- Activation and enhancement of drought contingency plans and funds respectively. ALRMP – Narok has activated DCF (though inadequate) as a respond to livestock disease control and water related issues in the district such as rehabilitation of boreholes.
- Expansion of school feeding programme to especially schools in areas where crop failure has been recorded and other vulnerable marginal areas both in Narok North and Narok South.
- FMD vaccination and control of CBPP and CCPP especially in Mosiro, Central, Mara, Loita and Osupuko areas where there is heavy concentration of livestock.
- There is also need for an internal rapid assessment of food security to establish the proper position of the impacts of the poor rains both in crop and livestock production livelihoods.

- Livelihoods support in the medium term for vulnerable groups – cash transfers and other recovery measures especially in the pastoral and marginal rain fed crop growing areas.

Current drought / concluded interventions

ALRMP- Narok

- Construction of Eor Esimu Water Pan in Central Division.
- Construction of Enkerende Curio market for women groups in Mara Division.
- Support to Narasha water project extension of pipeline to benefit more communities.
- Support to Ololepo irrigation scheme.
- Development and protection of Iltarara shallow well.
- Support to Agriculture and livestock Sector.
 - Bee keeping: provision of hives to Central, Osupuko, Ololulung'a and Mara Divisions community and training of the beneficiaries
 - Support to camel rearing through provision of camels and training of beneficiaries.
 - Support to livestock upgrading by providing dairy goats to pastoralists.
 - Community trainings in environmental conservation, animal traction, and utilization of drought tolerant crops (DTC).
 - Training DSG on Natural Resource Management.
 - Training District Peace Committees.

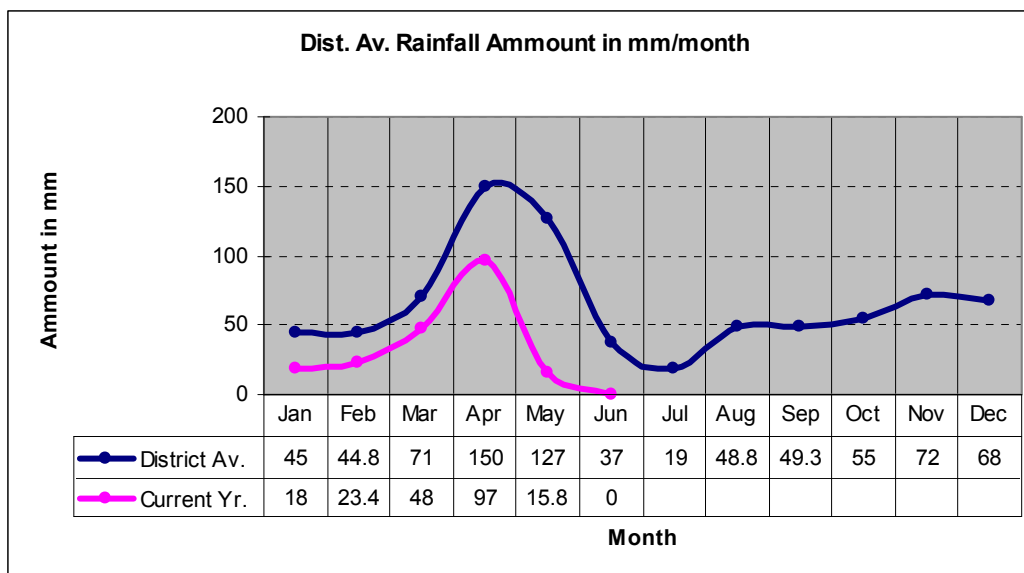
Other partners

- MoH, Operation Eye Sight International is currently drilling more boreholes in its District wide trachoma eradication programme.
- World Vision, World Concern, APHIAII and other institutions are supporting on the humanitarian services to the internally displaced persons currently in IDP camps.

1. Environmental indicators

1.1 Rainfall

- No rains were recorded during the review month.
- The month was characterised by dry cold and sunny intervals.
- This is out of normal during this time of the year.
- This is impacting negatively to the food security situation in the District.



1.2 Vegetation cover (pasture and browse)

- Pasture and browse conditions have remained fair but fast declining both in quality and quantity. This is mainly due to dry weather conditions and the high level of competition for the same between livestock and wildlife.
- The situation is likely to degenerate if the prevailing weather conditions persist. This will impact negatively to the food security in the District.

1.3 Water sources

1.3.1 Use of water sources

- Water conditions have also been affected by the weather conditions both in quality and quantity. Distances to watering points especially for livestock use are widening.
- Competition for water is still high between livestock and wild animals
- The main sources of water have remained mainly major rivers, Catchments pools, pans/dams and traditional wells.
- The situation is fast declining due to low precipitation.
- This will also impact negatively to the food security in the households especially the pastoral and agro pastoral communities.

The table below indicates water sources and percentage of households using them, compared to a normal situation.

Water source	1	2	3	4	Others
% Of h/holds depending on the source	30	53	13	2	2
% Of h/holds normally depending on source	25	50	15	8	2

1. Natural rivers
2. Catchment pools/dams
3. Constructed shallow wells/functional
4. Boreholes (functional)

1.3.2 Average distances (kms) to water sources

- Distances to and from watering points have slightly increased both for livestock and domestic use in both Narok North and South Districts. The situation is likely to worsen if the prevailing weather conditions persist.

- This will impact negatively to the food security situation as more time is used searching for water other than for other productive work especially for women and the children.

The table below indicates average distances to water sources compared to normal situation

Water sources	1	2	3	4	Others
Average Kms to the source	6	4	2	8	2
Normal Kms to the source	4	5	5	8	2

1. Traditional rivers/wells 2. Catchment pools/dams 3. Constructed shallow wells/functional 4. Boreholes (functional)

2. Rural economy indicators

2.1 Livestock production

2.1.1 Livestock body condition

- Livestock body conditions have remained fair to good for all categories. This due to the relatively good availability of pastures and availability of water.
- The trend is however likely to reverse if the current weather conditions prevail.
- This is going to impact negatively to the food security situation.

2.1.2 Livestock health (in terms of diseases affecting all species)

- There are still suspected cases of CCPP and CBPP in areas of Loita, and parts of Mara Divisions. This could be attributed to areas which were not reached during the vaccination campaign and also to the movement of livestock from the neighbouring republic of Tanzania through markets.
- The prices at the markets have remained stable and the sales are high.
- This contributes fairly to the food security situation.

2.1.3 Milk production

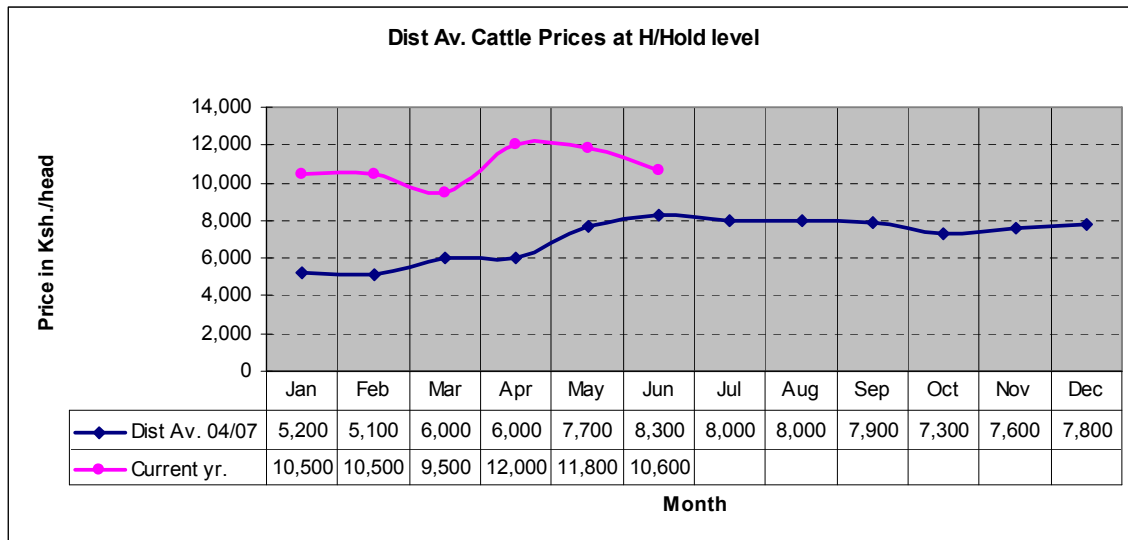
- Milk production has gone down due to the prevailing situation of low precipitation and declining pastures. This may also be attributed to the decline in calving rates among all species. This is likely to reverse the relatively good nutritional status of the under five and the aged.

2.2 Livestock Prices (Kshs)

2.2.1 Cattle prices

- Livestock prices are steadily declining as compared to the previous month. This is mainly attributed to a declining condition of markets especially arising from an increase in volumes offered for sale in the markets. This is aggravated by the failure in crop production thereby leaving most households with no option other than livestock sale for sustenance.

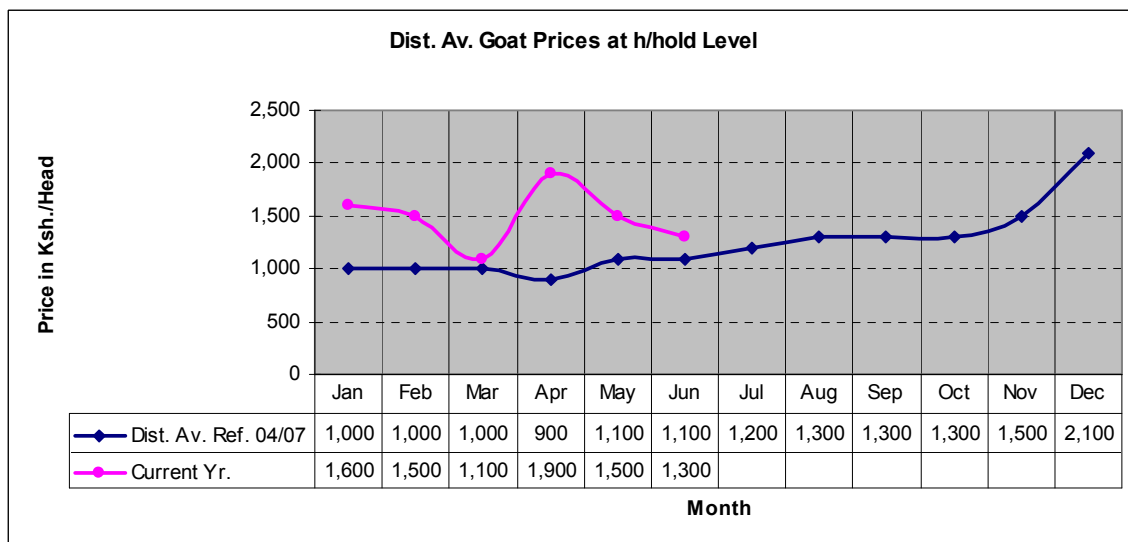
The graph below shows District cattle average prices in Ksh. At the household level



2.2.2 Goats prices

- Goat prices have also declined compared to the previous month.
- Besides the prevailing problem of CCPP that is affecting goats in most parts of the district especially Narok South, the same factors come into play as for cattle.
- This will impact negatively to the food security situation In the district

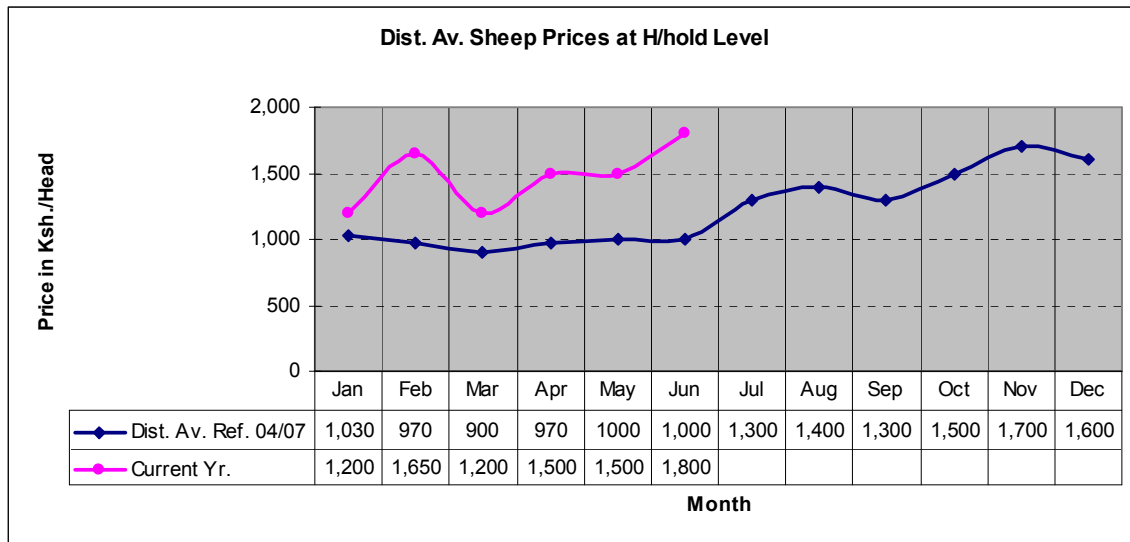
The graph below shows the District average prices of goats at the h/hold level (Ksh.)



2.2.3 Sheep prices

- Sheep prices have however, gone up compared to the previous month. This is mainly attributed to the relatively good body condition as they have not been affected by the CCPP that is currently affecting goats in areas of Mara, Loita and Osupuko Divisions.

The graph below shows the District average prices for sheep at the household level (Ksh.)

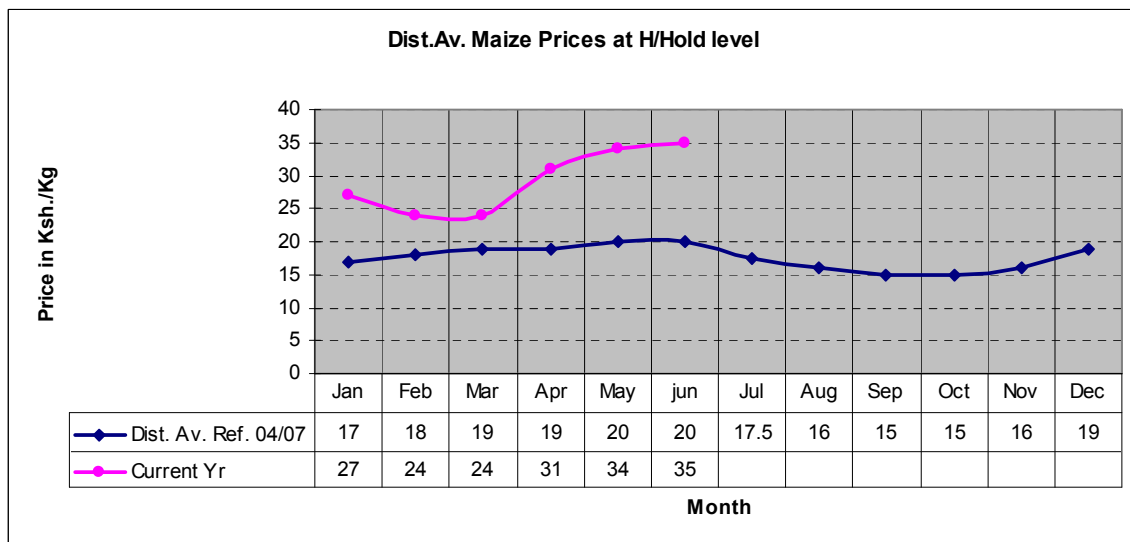


2.3 Food prices (purchases)

2.3.1 Maize prices

- Maize prices have continued to go up steadily as compared to the previous reporting period.
- This is attributed to a fast decline in the supply of the commodity in the market and also low levels at the community stores.
- This is impacting negatively to the food security level.

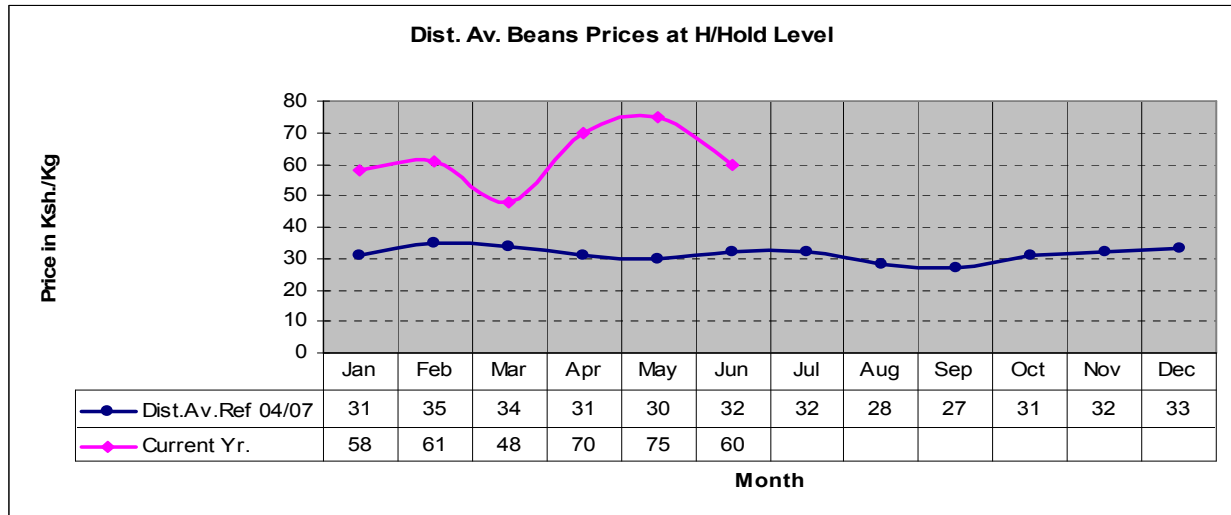
The graph below shows the average District maize prices at the household level (Ksh./Kg)



2.3.2 Beans prices

- The prices of beans have however, slightly gone down compared to the previous months.
- This is mainly attributed to a slight increase in availability of the produce at household level following some harvest from a few agropatorial and other mixed farming communities in areas of Nairragie nkare, Entasekera and Ololulunga and parts of Central Divisions.
- This is impacting positively to the food security situation in the District.

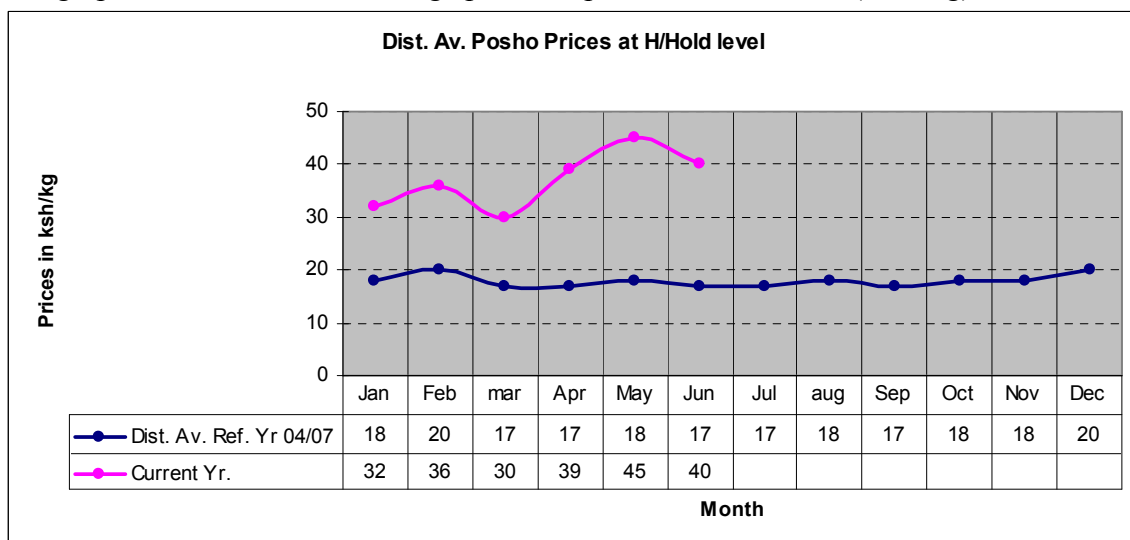
The graph below shows District average beans prices at the household level (Ksh /kg)



2.3.3 Posho prices

- Prices of posho have remained high though slightly below the previous month's rates.
- This is also attributed to a slight increase in availability of green maize though insignificant.
- This is impacting positively to the food security situation in the District.

The graph below shows the average prices of posho at the District (Ksh/Kg)



2.4 Crop condition

- The maize crop condition is bad especially for the lower rangelands of Loita, Central, Mara and Mulet. The crop is drying up prematurely due to water related stress.
- The bean crop is however, relatively good and a few farmers are now harvesting, though the crop acreage is insignificant compared to other crops such as maize and wheat.
- The wheat condition is also fair in the upper parts of the district but only for those who planted early. The crop has generally failed in most areas including Central Mau and Ololulung'a Divisions. This is mainly attributed to water related stress and most farmers cannot afford to buy pesticides/fungicides due to high prices in the market. The use of fertilizer had also gone down due to high costs and this is expected to affect the crop yields. There is also a significant destruction by wild animals.
- This will negatively affect the food security level both in Narok North and South Districts.

3. Human welfare indicators

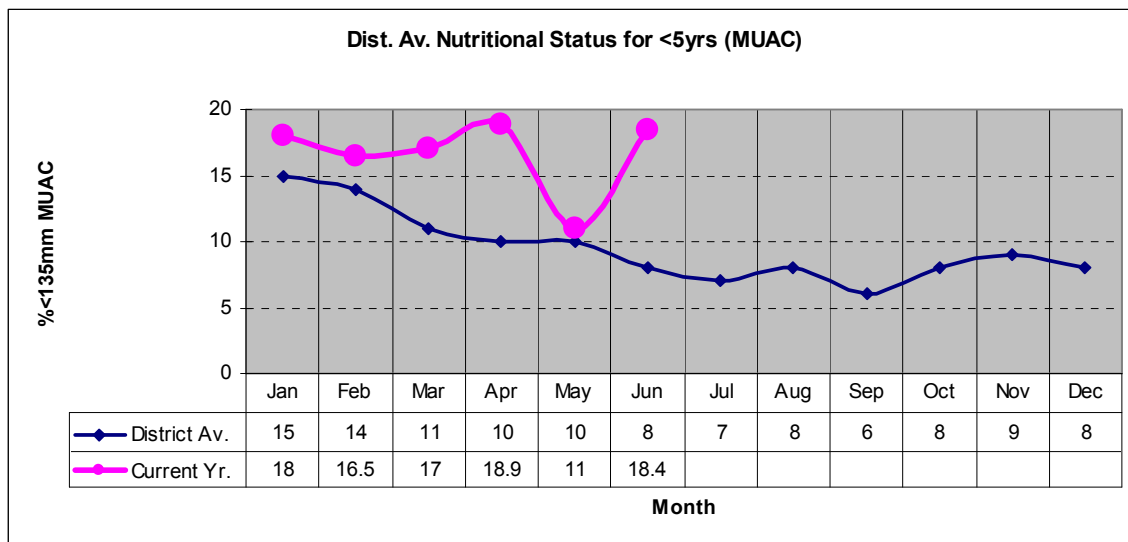
3.1 Human health

- There were no major incidences of human diseases during the review period

3.2 Malnutrition (MUAC) rates

- The nutritional status for children under five years have declined during the review month.
- This is mainly attributed to the common cold that was rampant and the declining food security situation in the District.

The graph below shows the MUAC malnutrition rates (% <135mm)



3.3 Insecurity/conflicts

- There were no major conflict issues reported in the District. The situation has stabilised both in the North and South Districts of Narok.
- There are however still people living in the internally displaced peoples' camps in central Narok awaiting resettlement.

3.4 Migration

3.4.1 Livestock migration

- Some herders have moved from areas of Suswa in mau Division to areas of Naivasha and Gilgil in Nakuru District in search of pasture and water.
- This is mainly attributed to alienation of pasture land by agriculture. This is seen as a negative impact in food security situation due to the fact that these areas cannot sustain any meaningful crop production.
- Movement of livestock within the district have reportedly continued as herders move their livestock away from the wildlife migration corridors and others in search of saltlicks for their livestock.
- This is however normal during this period.

3.4.2 Human Migration/displacement

- Movement of a few individuals into and out of the district in search of labour were also reported during the review period. This is however normal.

Recommendations to District Authorities/DSG and National KFSSG

- There is need for more contingency funds for use in emergency water, disease and other food security related programmes.
- Continuous disease surveillance should be sustained in order to contain diseases outbreaks especially in areas where livestock are concentrated e.g. the upper parts of the district especially in the dry grazing zones of Mau, Mara, Loita.
- Activation and enhancement of drought contingency plans and funds respectively. ALRMP – Narok has activated DCF (though inadequate) as a response to livestock disease control and water related issues in the district such as rehabilitation of boreholes.
- Expansion of school feeding programme to especially schools in areas where crop failure has been recorded and other vulnerable marginal areas both in Narok North and Narok South.
- FMD vaccination and control of CBPP and CCPP especially in Mosiro, Central, Mara, Loita and Osupuko areas where there is heavy concentration of livestock.
- There is also need for an internal rapid assessment of food security to establish the proper position of the impacts of the poor rains both in crop and livestock production livelihoods.
- Livelihoods support in the medium term for vulnerable groups – cash transfers and other recovery measures especially in the pastoral and marginal rain fed crop growing areas.

Current drought / concluded interventions

ALRMP- Narok

- Construction of Eor Esimu Water Pan in Central Division.
- Construction of Enkerende Curio market for women groups in Mara Division.
- Support to Narasha water project extension of pipeline to benefit more communities.
- Support to Ololepo irrigation scheme.
- Development and protection of Iltarara shallow well.
- Support to Agriculture and livestock Sector.
 - Bee keeping: provision of hives to Central, Osupuko, Ololulung'a and Mara Divisions community and training of the beneficiaries

- Support to camel rearing through provision of camels and training of beneficiaries.
- Support to livestock upgrading by providing dairy goats to pastoralists.
- Community trainings in environmental conservation, animal traction, and utilization of drought tolerant crops (DTC)
- Training DSG on Natural Resource Management
- Training District Peace Committees

Other partners

- MoH, Operation Eye Sight International is currently drilling more boreholes in its District wide trachoma eradication programme.
- World Vision, World Concern, APHIAII and other institutions are supporting on the humanitarian services to the internally displaced persons currently in IDP camps.