

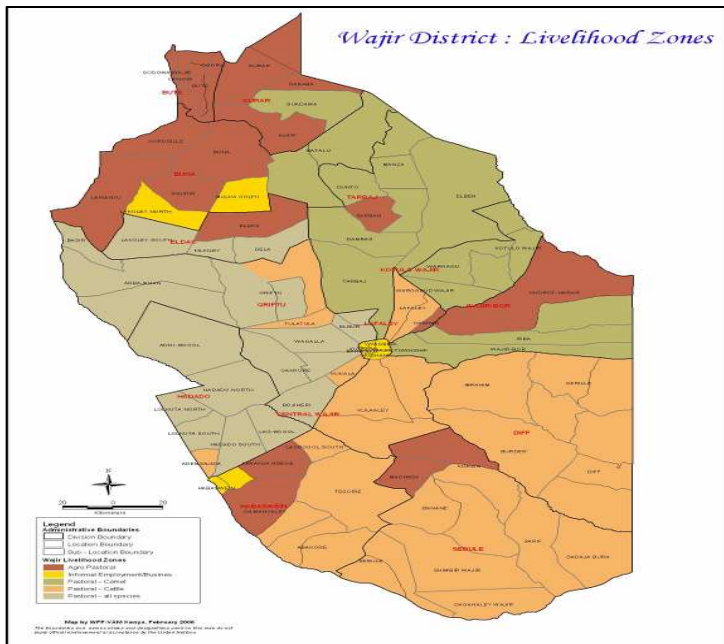


**OFFICE OF THE PRIME MINISTER
MINISTRY OF STATE FOR THE DEVELOPMENT OF NORTHERN KENYA AND OTHER ARID LANDS
ARID LANDS RESOURCE MANAGEMENT PROJECT II**

DROUGHT MONTHLY BULLETIN FOR JUNE, 2008

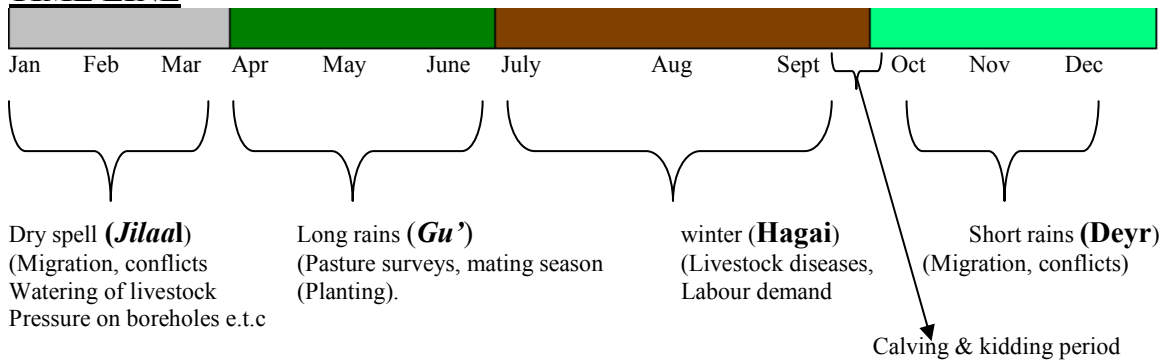
WAJIR DISTRICT

WARNING STAGES



LIVELIHOOD ZONE	WARNING STAGE	TREND
Pastoral – All Species	ALERT	Worsening
Pastoral – Cattle	NORMAL	No change
Pastoral – Camel	ALERT	Worsening
Agro – Pastoral	ALERT	Worsening
Informal Employment/Business	ALARM	Worsening

TIME LINE



Situation Overview

- The month of June was characterized by cold weather and no rainfall.
- Milk availability at the local market was adequate with slight variation in price compared to the previous month at Kshs 30 per 750ml bottle.
- There was a drop in the quality and quantity of pasture and browse, the average grazing distance was 9.1 Km, while the distance to water increased to over 15 Km.
- Water availability is diminishing at both house hold level and for livestock consumption. Most of the pans and dams are drying up, over ten centers are now on water tracking especially at Adan Awale, Lolkuta North, Qanjara and Boji Heri Location.
- Malaria, URTI, diarrhoeal diseases and malnutrition, still remains the top causes of morbidity and mortality. The mosquito menace is still high despite the dry spell.
- Over 15 cases of kalazar are still admitted in the District hospital with over 46 cases treated and discharged at Wajir East District hospital. Most of the index cases are from Arbajahan and Isiolo District. Cholera cases have been contained all over the District following the mass hygiene promotion, sensitization and awareness that were carried out in order to curb the outbreak.
- Inter-clan conflict had been reported causing three deaths and several casualties admitted at the District hospital as the result of land disputes at Tula Tula location but the matter was resolved through peace initiative, few other cases of insecurity had been reported along Eastern and North Eastern border.
- Animal price are low compared to the season and the prices of camel have reduced significantly, however the outbreak of PPR in Goats is still rampant with over 35,000 deaths reported, 30,000 were vaccinated.
- Cases of malnutrition have reduced as the result of massive supplementary feeding program carried out by Merlin (NGO) with complementary from SFP in schools targeting under fives compounded with the availability of milk at the local market thus reducing the risk malnutrition of children under five years with MUAC < than 135 mm to be 28.3% and the CHANIS data at the District Hospital indicates approximately 22% of the children are malnourished.
- General Food Distribution is still ongoing with target coverage of 20% in Central 25%, Griftu 25%, Bute 29%, Eldas 39%, Hadado 39% and Sebule 20% versus the current estimated population of 520,202. However, the target beneficiaries at the District is 139,894 persons.
- Prices of cereals and other Commercial food in the local market have increased as the result of increase in fuel and other goods.
- Food for asset (FFA) program had been rolled through out the District and Currently the District Project steering committee have so far approved Eight FDP to start FFA program which includes Burder, Beramo Mansa and Anole, Kutulo, Basir, Gurar and Biyamatho. The project target all the 115 GFD.

Recommendations to the DSG and the National KFSSG

- Mass livestock vaccination and treatment to curb livestock diseases especially shoats from PPR.

- Strengthening of both human and livestock disease surveillance all over the District especially along the borders of Kenya and Somalia.
- Food for training strategy to be considered and building of community capacity for asset management.
- Food and cash assistance to vulnerable groups in moderate to high category through FFA intervention program.
- Enhance support to youth group, women group, orphans and community organized groups in financial micro projects in order to improve their live hood through income generating activities.
- Conflict early warning and peace building initiatives to be strengthen since resources are limited.

Current intervention measures

Currently the following are the immediate intervention which is carried out in the District;

Food aid

- Emergency operation program by world food program through the implementing agencies Aldef-Kenya and Wasda.
- Supplementary feeding program to under fives by Merlin (ngo), SFP and support to other vulnerable children.

Coping strategies

- Sell of Miraa, Gum and resins, Quarry products, purchasing of food on credit and selling of firewood and charcoal

Non -food aid

- Promotion of Hygiene and chlorination of wells and other source of drinking water.
- Construction of VIP toilets by KRCS Wajir branch and conducting of other health related diseases.

Current DSG meeting and recommendations.

- The DSG approved ALRMP annual work plan.
- Hunger and Safety Net Program which is targeting approximately 16,000 people in the first year and generally 175,000 in all the ten year phases.
- Support to urban and youth fund to enhance the support of vulnerable groups which will economically improve their live hood support and provide income generating activities.

1. Environmental indicators (Stability)

1.1 Rainfall

- No rainfall was recorded during the month under review; however there were a few showers in few places.

1.2 Natural vegetation, forage and pasture

- Although the quality and quantity of pasture, forage and the vegetation are good; it's depilating due to over stretching and in ward migration of animals from Eastern Province and Mandera District.

1.3 Water source and availability

- Most of the water used at both house hold and livestock used are mostly from pans and shallow wells within a walking distance of approximately 10 Km and 15 Km respectively. Most of the pans and dams are drying up.

1.3.1 Household accessibility to water

- At household level the accessibility of water is estimated to be at a distance of 10 Km and manly sourced from water are pans and shallow wells.

1.3.2 Livestock access

- Livestock are still accessing water at a distance of 15 Km and is fair compare to previous season when the animals are trekking more.

1.4 Emerging issues

- Inter clan conflict.
- The outbreak of kalazaar.
- Insecurity along the Kenya-Somali border
- Outbreak of PPR which have become endemic in the District.
- The quarantine of PPR have aggravated the terms of trade which have an impact heavily on lower strata pastoral vulnerable households whose purchasing power are low.
- Influx of pastoral communities from Mandera and Somalia.

1.4.1 Insecurity

- Currently, no cases of insecurity have been reported despite the inter clan conflict which occurred at TulaTula , which was solved.

1.4.2 Migration

- There was inward migration of pastoralist from Mandera, Somalia and neighbouring Moyale District. Animals are now concentrated in Wajir Bor, Gerile, Tarbaj, Griftu and Sebule in Wajir South.

1.5 Implication on food security

- Low price in milk.
- Production of small garden crops.
- Improves livestock body condition and good livestock prices will have a positive impact on food security.
- However the failure of crop production as the result of low amounts of rain will have a negative impact on food security in the District.

2. Rural indicators (Food availability)

2.1 Livestock production

- Most of the animals like the shoats have calved especially in Eastern push land but diseases like PPR have affected small shoats which will in turn have negative impact to the pastoralist community.

2.1.1 Livestock body condition

- Generally animal body condition are good following the good pastures and browse which had been generated in the last season in conjunction with the availability of water.

2.1.2 Livestock diseases

- The outbreak of PPR in shoats is still a problem in the District wide however areas mostly affected includes Hadado, Tarbaj and Griftu areas.

2.1.3 Milk production.

- Milk production are still good due to availability of adequate pastures and browse and the market price of camel milk at the local market have remained the same as compared to the previous month at a price of kshs 25/= to 30/= per 750mm bottle of milk in the local market.

2.2 Crop production

- The crops which had been planted like maize and millet have failed due to inadequate rainfall while the farmers have planted late, however small garden farming is still practiced in Wajir Central and other areas using small irrigation especially at Tarbaj and Buna.

2.2.1 Timeliness and condition of crop production

- Crops which have been planted have failed due to inadequate of rainfall and have therefore withered.

2.2.2 Pests and diseases

- Currently no pest and other diseases apart from the army worm which have invaded in the previous month and affected not only crops but also pastures.

2.2.3 Implication on food security

- The District Food security will only increase when irrigation farming is strengthened since rainfall in the areas are not reliable.
- EMPO is on going with subsidiary relief food from Office of the president.

3. Access to food

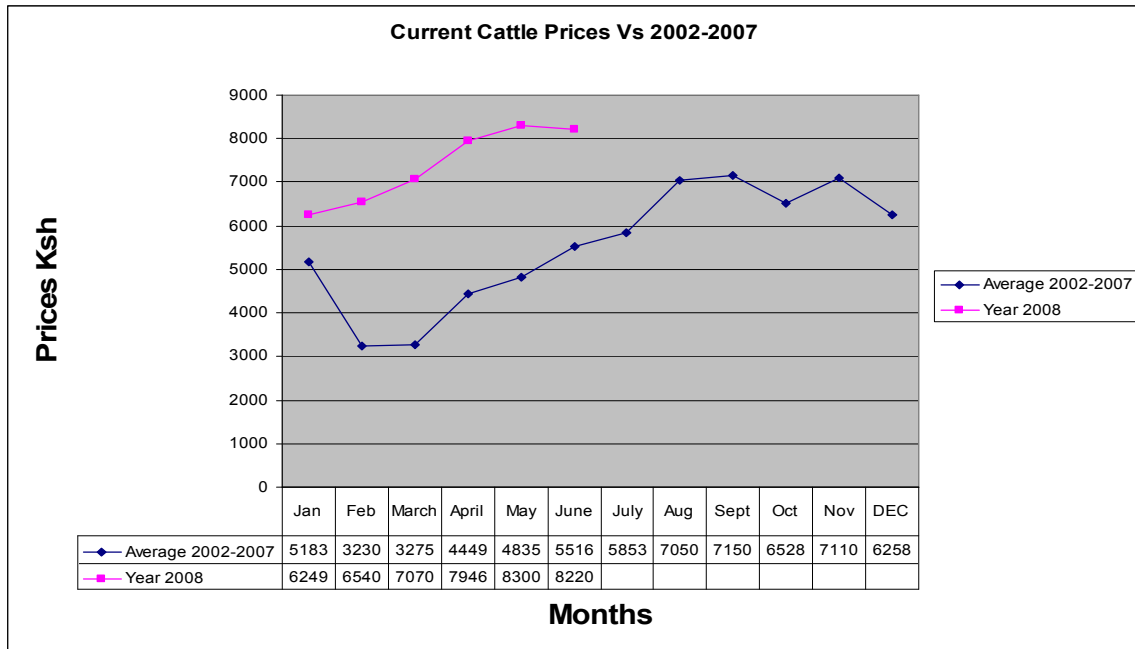
3.1 Livestock marketing and sales

- Generally the market prices of livestock are good as their body conditions are good.

3.1.1 Cattle prices

- The prices for cattle have slightly decreased from Kshs 8,300 to Kshs 8,220. The price decrease is as a result of poor marketing in external market.

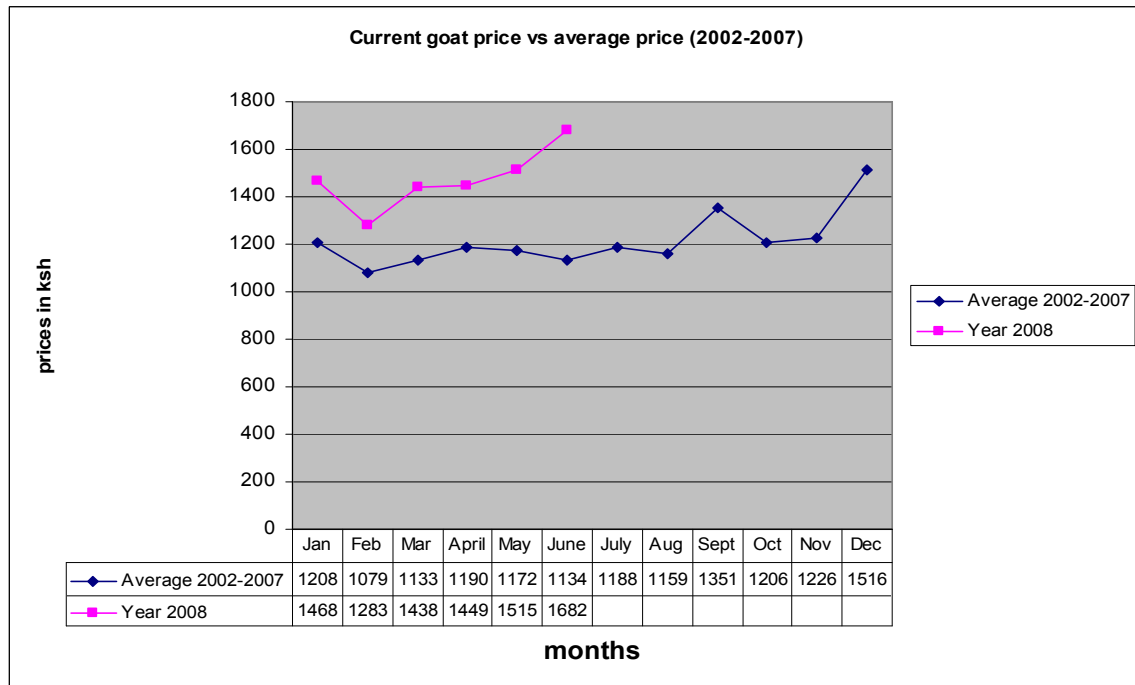
The graph below indicates cattle long term mean prices against current year 2008.



3.1.2 Goats prices

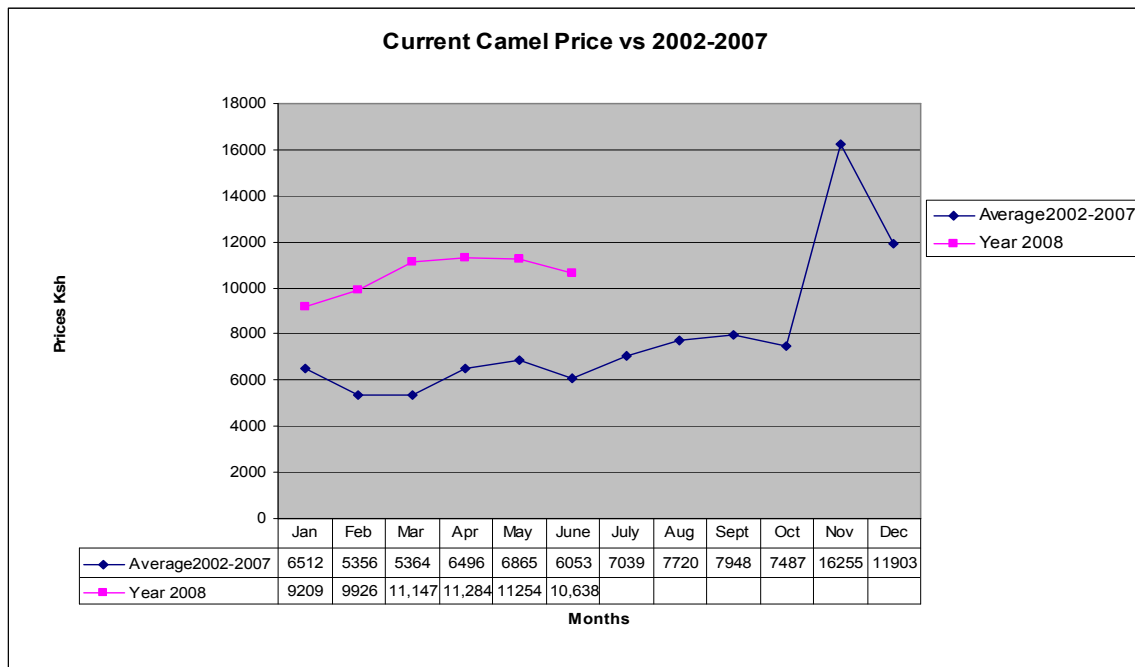
- The price of goats have increased slightly as compared to the previous month from Kshs 1,515 to Kshs 1,682 in the current month. The price increase is as the result of improved body condition though the escalating increase will be affected by the quarantine imposed.

The graph indicates Goat long term mean prices against current year 2008.



3.1.3 Camel prices

The graph below indicates Camel long term mean prices against current year 2008.



- Camel prices have reduced in the last three months at the local market as external market especially the Kenya-Somali border is still closed and few transported to other parts of the country and local butchereries.

3.2 Livestock sales

- Generally the sale for livestock is poor at the local market due the outbreak of PPR in goats and closure of external market.

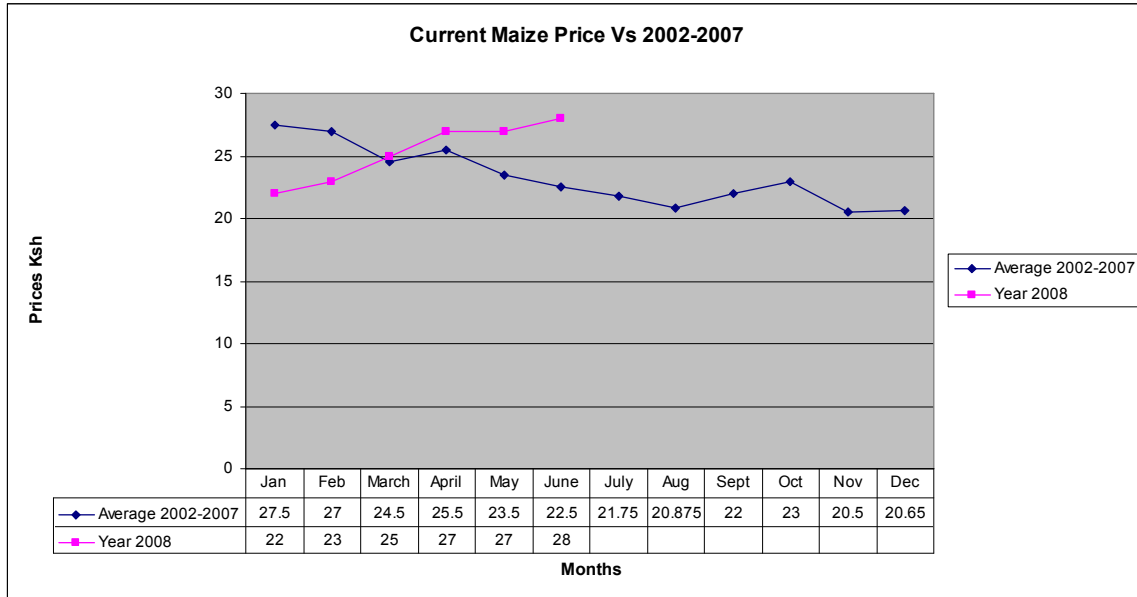
3.3 Milk consumption

- Milk consumption has improved leading to improve in nutritional status of children who are less than five years of age.

3.4 Crop prices

3.4.1 Maize prices

The graph below indicates maize long term mean prices against current year 2008.

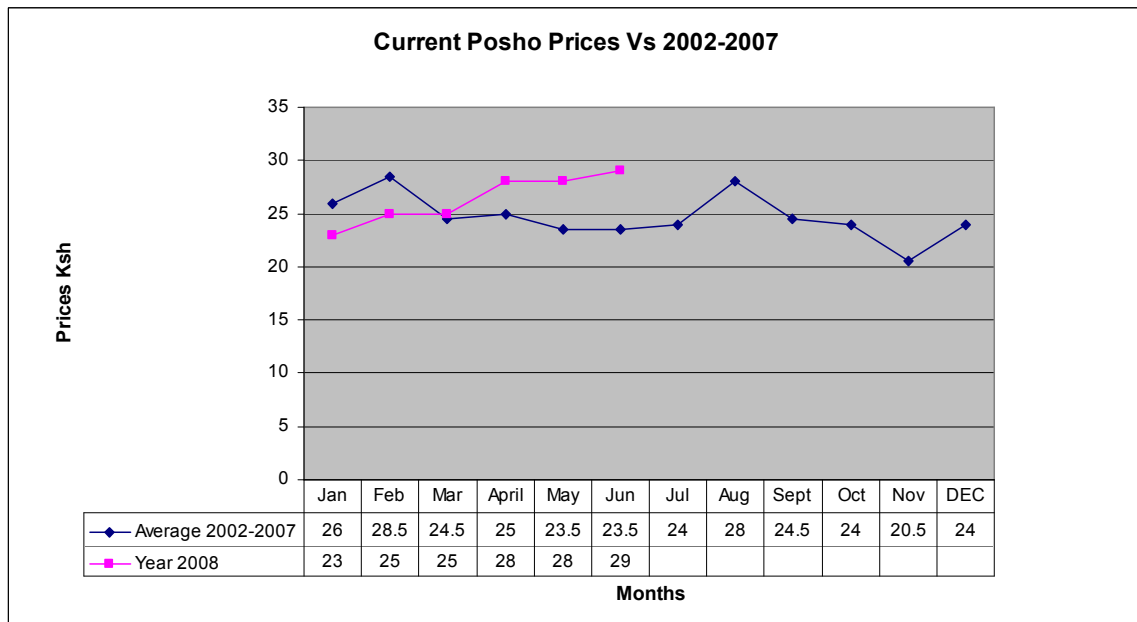


- The prices for maize of 1 Kg have increased slightly with one shilling as the result of increase in fuel and other goods.

3.4.2 Posho prices

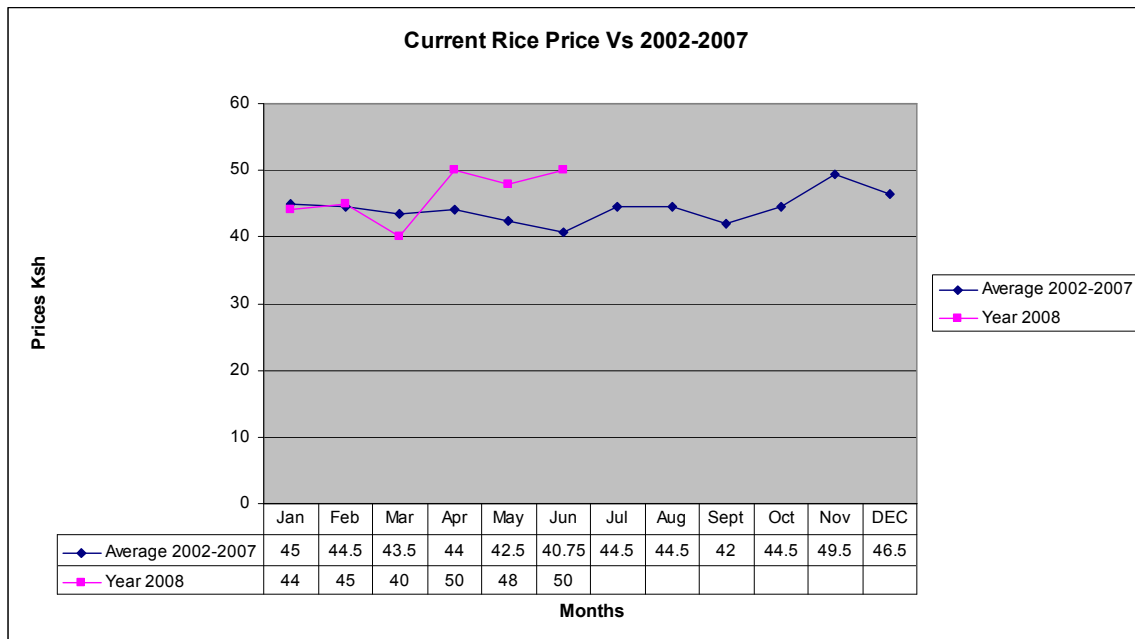
Posho (Maize meal)

The prices for Posho have similarly increase in the local market and posho is a stable food in the community.



3.4.3 Rice prices

The graph below indicates long term mean prices of rice against the current year 2008.



- The prices for rice have also increase as compared to the previous month, currently the commodities is not given as relief.

3.5 Income

3.5.1 Crop income

- Kitchen farming using small irrigation pumps especially at Wajir Central are alternative source of income and are widely sold in the local market.

3.5.2 Livestock income

- The income source from livestock is currently more of its product like milk and ghee, though the market price is good the pastoralist hesitate to sell their animals in order to maintain their herd, however in small business live hood zone, most people engage in livestock trade as brokers, middlemen or small scale traders and sale of quarry products. Hides and skin are also transported to outside local market.

3.5.3 Other income

- Hawking, selling of Miraa, quarry, daily casual labour, fetching of firewood are other alternative source of income especially in small business/informal livelihood zone. Though the general income is still low, production and sell of gum and resin are also commonly practiced.

3.6 Implication of food security

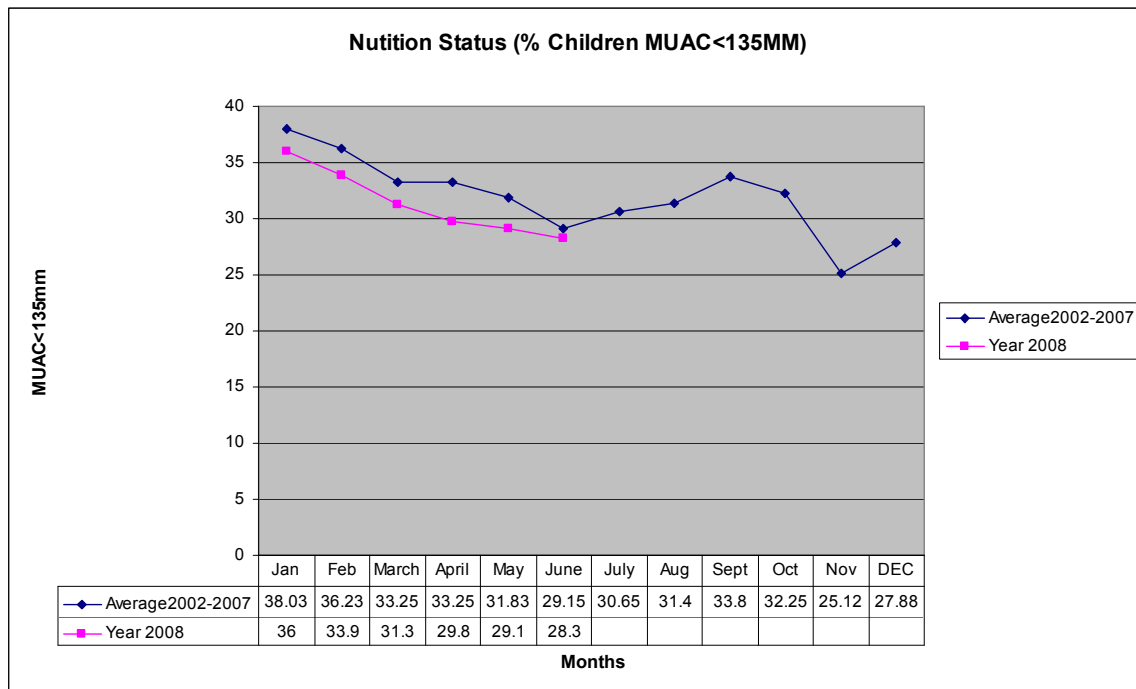
- GFD Phase seven is continuing with a target beneficiary of 139,894 person vices the total population of 520,20 persons in Wajir District, while Tarbaj, Hadado, Wajir Bor and Sebule have been ranked to be the most food insecure in the last assessment carried out.

4.0 Welfare (utilization of food)

4.1 Nutrition status

- The percentage of malnutrition of children under five years using MUAC (<135MM) have reduced with massive nutrition support from Merlin (Ngo) availability of milk and support to school through SFP by WFP in the nursery schools.

The graph below indicates long term muac<135mm against the current year 2008.



4.2 Health

- Morbidity and mortality rate in the District remains as malaria, URTI, diarrhea diseases and malnutrition. Cases of Kalazar are still at the District hospital with most cases from the neighbouring Isiolo District and few cases from Arbajahan and Eldas.

4.3 Flagged areas

Inter clan conflict had occurred at TulaTula situated approximately 25 miles from Wajir.

5. Current intervention measures

5.1 Non food

- Credit scheme used as revolving fund by Aldef Kenya (NGO).
- Support to mobile school education through ALRMP and MOEST.

5.2 Food aid

- EMOP relief food distribution by WFP through lead agency, Oxfam and implementing partners (ALDEF & WASDA) is on going.

- Outpatient therapeutic feeding and supplementary feeding Programmes (TFC) by Merlin at Wajir district hospital and all the thirteen Division.
- Basic relief support from OOP especially to vulnerable groups.
- FFA-food for asset program

5.3 Other coping strategies

- Natural resources like Gum and resins are sold in the market for the communities to sustain itself as a source of alternative livelihood.
- Restricting of specific watering points that are close to settlements for human use especially in Dams and ponds.
- Sale of quarry products for Income generating activities.
- Reduction of number of meals per day.
- Most of the communities borrow non food on credit from shops as a coping strategy.

6. Recommendations

- Support to orphan and vulnerable people through income generating activities and material support. (Action ALRMP, DYO).
- Food for training strategy to be considered and building of community capacity for asset management..(Lead agency Oxfam, Wasda, Aldef and ALRMP).
- Conflict Early warning and peace building initiatives to strengthen. (Action WPDA, ALRMP, OOP).
- Enhance water harvesting for household and crop production. (Action DWC).
- Mass treatment and vaccination of livestock diseases especially the shoats. (Action DVO).
- Improve in sanitation and hygiene promotion through good latrine coverage. (Action KRCS, OXFAM and DPHO).
- Strengthening of Diseases surveillance along the border and curbing of Kalazar at Arbajahan and Eldas.(Action DDSC)
- Carry out rapid assessment all over the District to plan, strategies and to enhance food security. (Action: ALRMP).