

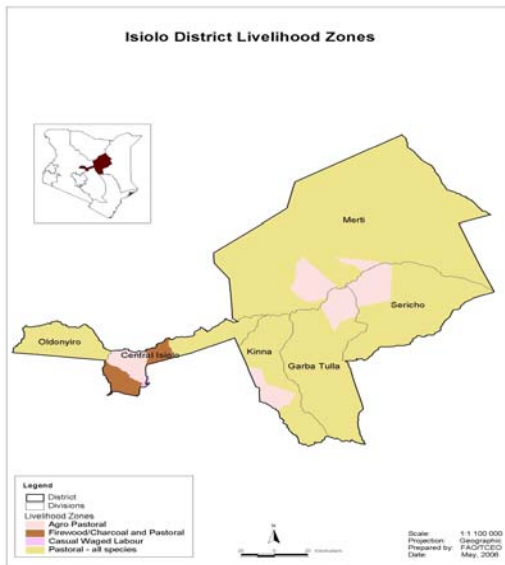


OFFICE OF THE PRIME MINISTER  
 MINISTRY OF STATE FOR THE DEVELOPMENT OF NORTHERN KENYA AND OTHER ARID LANDS  
 ARID LANDS RESOURCE MANAGEMENT PROJECT II

**DROUGHT MONTHLY BULLETIN FOR MAY, 2008**

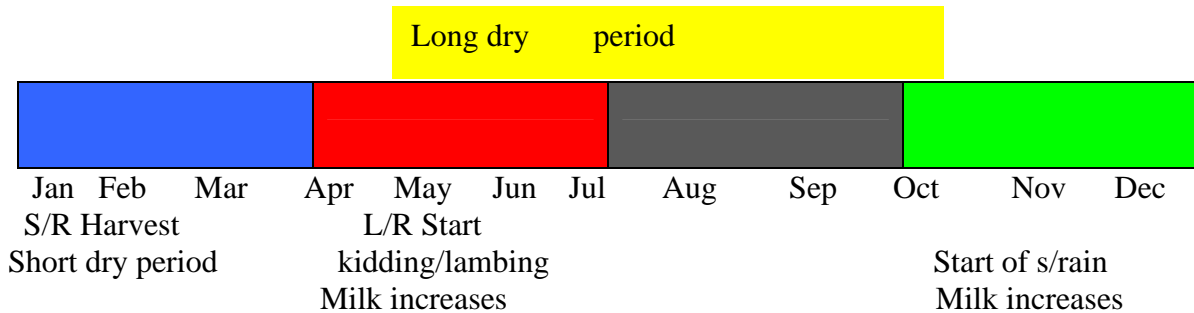
**ISILOLO DISTRICT**

**WARNING STAGES**



Livelihood Zone	Warning stage	Trend
Pastoral- all species	Alert	Worsening
Agro pastoral	Alert	Worsening
Casual waged labour	Alert	Worsening
Firewood/ Charcoal	Alert	Worsening
District	Alert	Worsening

**TIME LINE**



## **Situation Overview**

- The District reported inadequate rainfall during the long rain season was inadequate throughout the districts. Almost all sample sites recorded below normal cumulative totals. Iresaboru, Kinna, Malkagalla, Gafarsa and Sericho received cumulative totals of 19.5mm, 70mm, 83.7mm, 89.5mm and 44mm respectively.
- There is poor pasture rejuvenation in most areas of the District; as a result livestock have migrated to Lososia in Samburu District from Oldonyiro, to Urura in Merti Division, and to Modogashe and Lagdera in Sericho Division.
- A Leishmaniasis disease outbreak occurred in Korbesa and Malkagalla Locations of Merti and Cherab Division. Fifteen children are being treated at Wajir District hospital, two died while undergoing treatment.
- The main rivers dried up, worsening access to water. The population has turned to shallow wells for water.
- Almost all (90%) of the crops wilted, and others destroyed by army worms in Kinna and Merti.
- Highway robbery and cattle rustling are on increase in Ngaremara Location of central Division.
- An improved nutritional status in children (MUAC from 19% to 8.9 %)

## **Recommendation to the DSG and National KFSSG**

- Insecurity in Ngaremara Location due to cattle rustling: Action - Provincial Administration in Isiolo and Samburu Districts.
- More investigation and management of the Leishmanial disease outbreak in Korbesa and Malkagalla of Merti and Cherab Divisions: Action - MoH.
- Extensive vaccination exercise against black quarter, lumpy skin disease, and contagious caprine pleuro pneumonia in Kinna, Tanna, Kuro Barata, Sericho, Iresaboru, Biliqo and Badana: Action - DSG/District veterinary officers.

## **Current intervention and coping strategies.**

### **Non – food:**

- Fifteen children suspected of Kalaazar were being treated at Wajir District hospital.
- Training on identification of army worms and control measures done in Sericho, Kinna, Merti and Central Division.
- Spray pumps and chemicals supplied to farmers to control army worms.
- Vaccination against black quarter, anthrax and contagious caprine pleuro pneumonia was done in Sericho, Badana, Iresaboru, Gotu and Barambate.
- The on going construction of water systems and Tanks in Biliqo.
- Drilling of parkuruk borehole by the Arid lands office.

### **Food:**

- EMOP dispatched general food distribution to Merti, Garbatulla, Kinna, Oldonyiro, Sericho and Central.
- Supplementary distribution was made to all dispensaries in the two Districts.

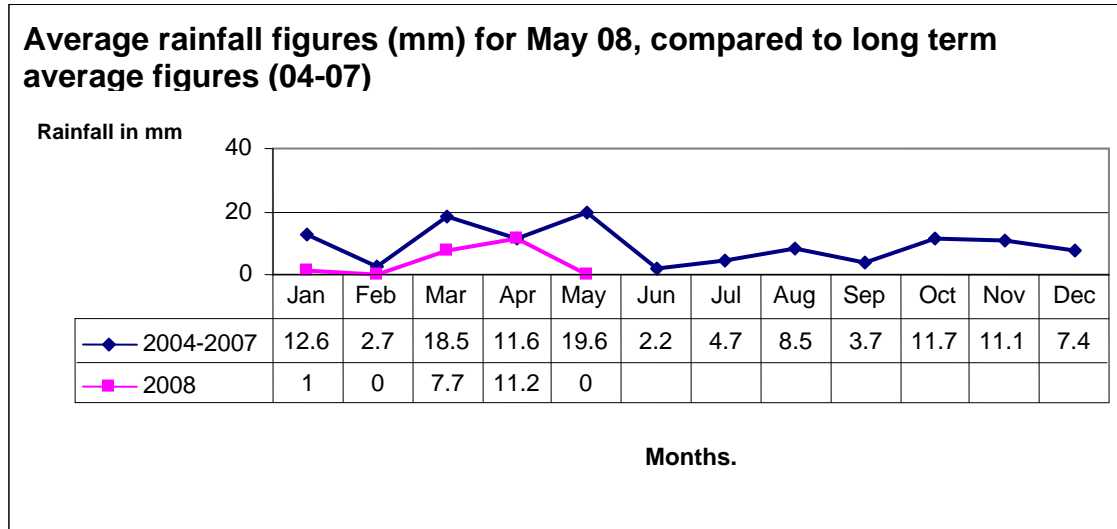
## **Previous DSG meeting and recommendation**

- A rapid assessment and formation of a technical team to identify food for assets projects in Garbatula, Kinna, Central and Oldonyiro.

## 1. Environmental indicators (Stability)

### 1.1 Rainfall

- No rainfall was received in the month of May. April's inadequate rainfall was poorly distributed.
- This situation is not normal in comparison to other years.  
The graph below shows the rainfall patterns for May compared to long term mean.



Source: District agriculture office and arid lands

### 1.2 Natural vegetation and pasture

- The state of natural vegetation and pastures is not normal compared to previous seasons in a normal year.
- There was poor pasture rejuvenation in Oldonyiro, Merti and Sericho Division. As a result satellite herds have migrated as far as Lososia from Oldonyiro, Urura, and Bulle in Merti and Modogashe in Sericho Division.
- Distances to grazing areas for milking herds increased to an average of 10 Km one way from lasts months 2 km.

### 1.3 Water sources and availability

#### 1.3.1 Water source

- The current water sources are the shallow wells and boreholes.

#### 1.3.2 Access to water

- Access to water by both human and livestock deteriorated compared to last month. This is because of the drying up of the main rivers, forcing people to use the shallow wells. This is not normal in previous seasons.
- Distances to water sources and return time increased to an average of 8 Km in 4 hrs. The increased distance and time are for shallow well users of Kipsing, Merti, and Sericho Division.
- The table below indicates water sources and percentage of households using them compared to the normal situation.

<b>Water source</b>	<b>1</b>	<b>2</b>	<b>3</b>	<b>4</b>	<b>Others</b>
% of household depending on the source	8	30	20	40	2
% of household normally depending on the sources	25	30	-	40	5

1-river, 2-boreholes, 3-shallow wells, 4-piped system, others pans, dams

#### **1.4 Emerging Issues:**

- The distances to water increased as rivers dried up, distances to pasture also increased in all sampled sites.

##### **1.4.1 Implication on food security.**

- The food security situation will continue to worsen due to less rainfall.

## **2.0. Food availability (Rural indicators)**

### **2.1. Livestock Production**

#### **2.1.1. Livestock body condition**

- Livestock body condition is generally fair for all species. However, the shoats' body weight in Gotu, Barambate and Biliqo deteriorated due to the Contagious Caprine Pleuro Pneumonia (CCPP), while cattle in Sericho, Iresaboru and Kinna were affected by black quarter, anthrax and bloat disease.

#### **2.1.2 Livestock Diseases**

- Contagious Caprine Pleuro Pneumonia outbreak occurred in shoats in Gotu and Barambate, while few cases of lumpy skin, black quarter, anthrax and bloats affected cattle in Sericho and Kinna Division. A total of 15, 320 heads of cattle were vaccinated against black quarter in Kinna and Sericho, while 36,795 shoats were de-wormed in the same areas.

#### **2.1.3 Milk Production**

- An average of 102.8 bottles, of which 89.3 bottles was consumed at household level were realized.
- The production was highest in Merti (161 bottles) and lower in Sericho.

## **2.2 Crop Production**

### **2.2.1 Timeliness and status of crop**

- There was total failure of rain fed crops in all sample area.
- The small scale irrigated crops grown in Elsa, Gambela and Bullesdima of Central Division and Kinna are likely to wilt. This is as a result of the strict restriction of water use by the water and irrigation officials discouraging the use of water through furrows /canals.

### **2.2.2 Pest and Diseases**

- There was destruction of crops by army worms in Kinna and Merti.

### **2.2.3 Harvest**

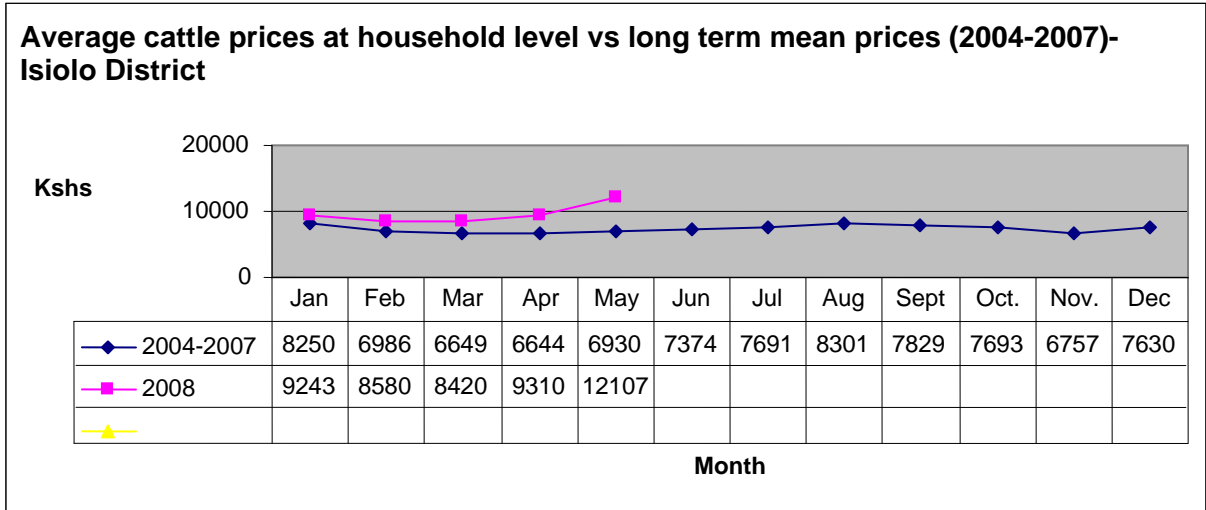
- No major harvest was realized over the month. This is not normal compared to a normal year, however small scale vegetable harvests were realized in Gambela and the

irrigated areas of Kinna and Central, representing an income of 4% to the total household income in May.

### 3. Access to food

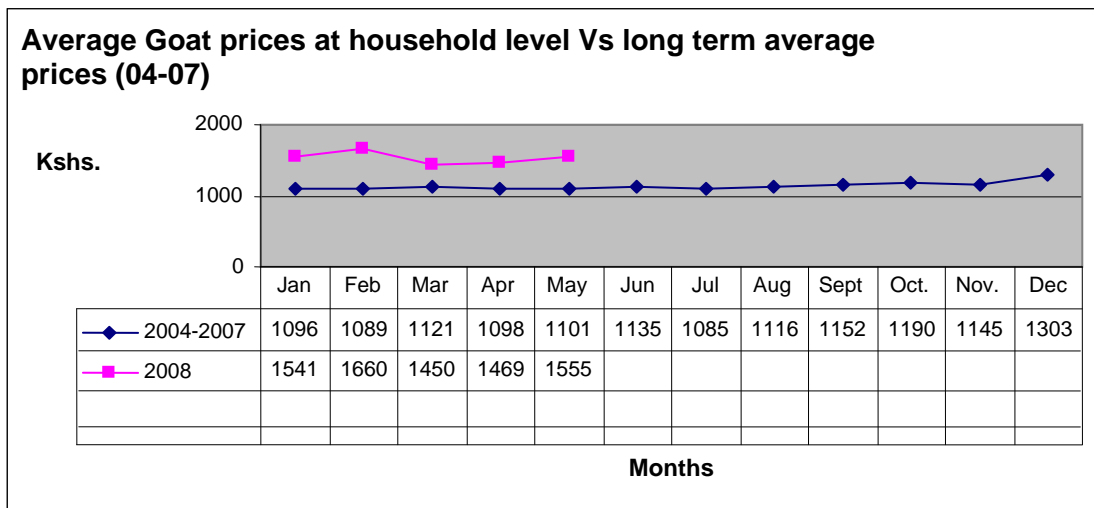
#### 3.1. Livestock marketing

##### 3.1.1. Cattle prices



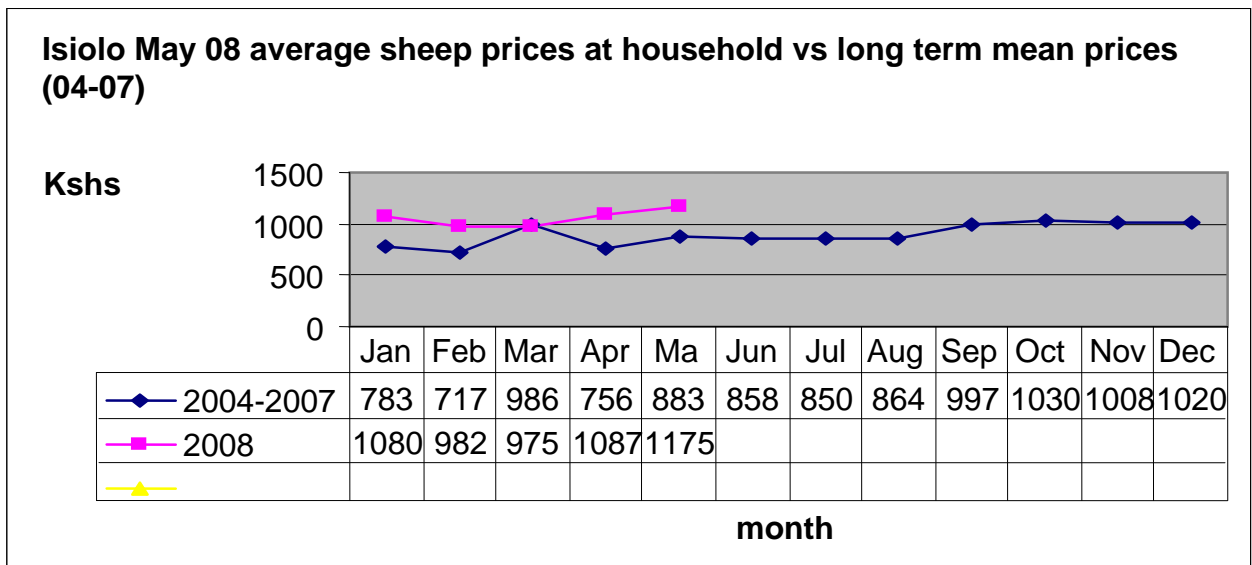
- The average cattle price for the month was Ksh.12, 107.00; representing a 30% increase from previous month's Kshs 9, 310.00. The increases may be due to less supply in the market.
- Prices are lower in Merti (Kshs. 7,750) and higher in Central (Kshs.18, 000).

##### 3.1.2 Goat production and marketing.



- The average goat price increased to Kshs.1, 555/= representing a 5.8% increase due to the good body weight coupled with reliable livestock market outlets.
- The prices are higher in Kinna (Kshs.2, 125.00) and lower in Oldonyiro (Kshs.1, 238.00).

### 3.1.3. Sheep prices.



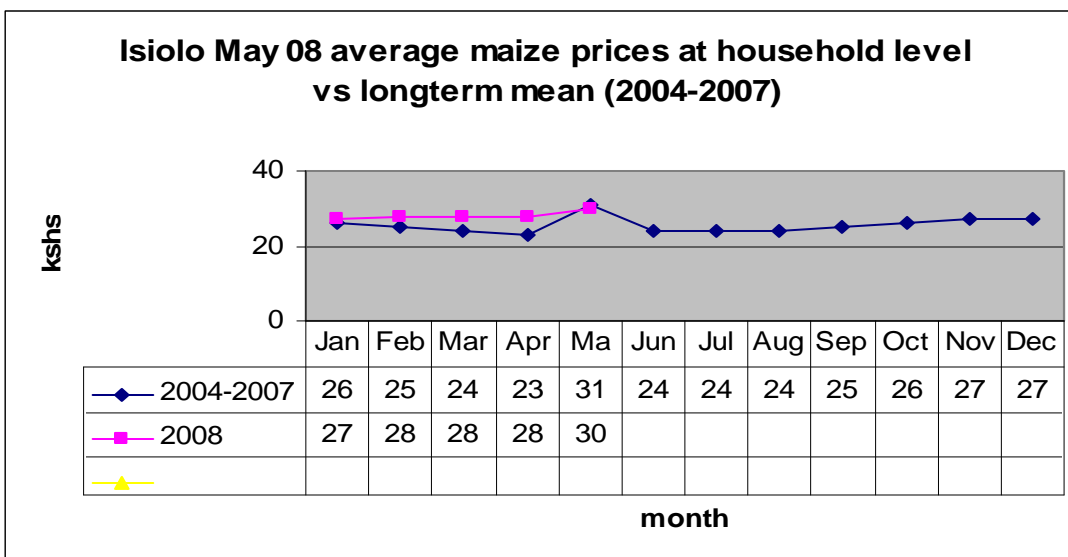
- The average sheep price improved to Kshs.1, 175.00, representing an increase of 8% from the last month, as a result of the improved body weight.
- Prices are high in Merti (Kshs 1, 575.00) and lower in Kinna (Kshs. 913.00)

### 3.1.4 Camel Price

- Camel prices stood at Kshs. 10, 066.00 in the month of May.

## 3.2 Cereals prices

### 3.2.1 Maize prices.

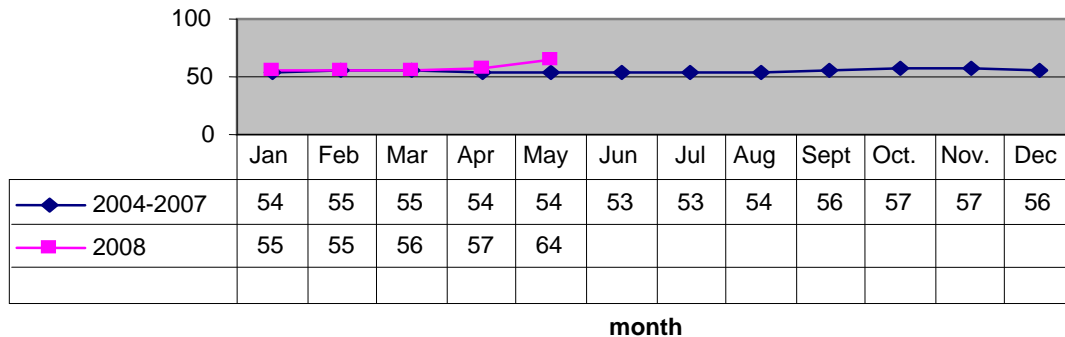


- The average price of maize was Kshs.30 per kg. A kilogram of this commodity was traded above this average price in Merti and Sericho being Kshs.32
- The increases are due to limited availability in tandem with increasing food prices.

### 3.2.2. Beans prices.

**Isiolo May 08 beans prices at household level vs long term mean prices (04-07)**

prices in kshs



- The average price of beans increased to Kshs.64.00 per kilogram.
- A kilogram of beans is trading at between Kshs.70.00 and Kshs. 80.00 in Merti and Sericho Divisions.
- The prices are rapidly increasing along with other food commodities such as rice, maize meal and oils.

**3.3 Incomes**

**3.3.1. Crop income**

- Income from crops in the agro-pastoral and irrigation farmers of Central Division contributed about 4% of the total household income in May.

**3.3.2. Livestock income**

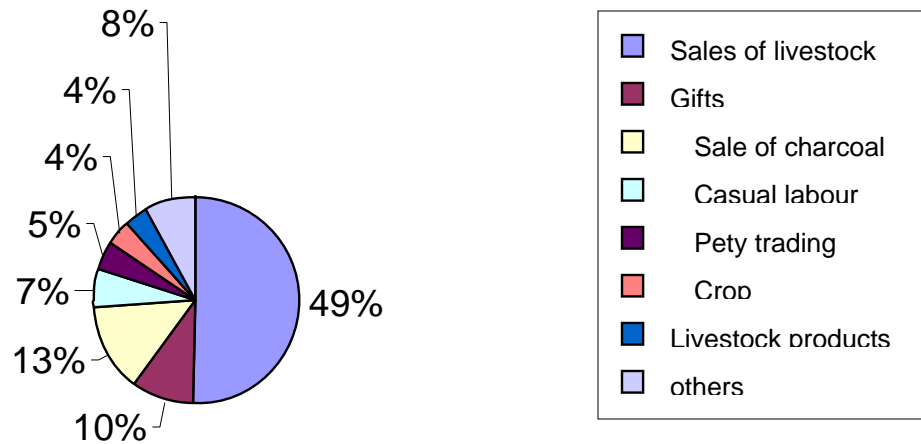
- Income from livestock contributed approximately 49% of the total household income in the month of May.

**3.3.3 Other incomes**

- Other sources of household income included: sale of charcoal (13%), casual labour (6.5%), and sale of livestock products (3.5%). The sale of charcoal reduced by 3%, casual labour reduced by 2.5%, while the gift items and livestock products remained stable in comparison with the previous month's.

The pie-chart below shows sources of household income in Isiolo District for the month of May 2008.

### Income sources at household-Isiolo District

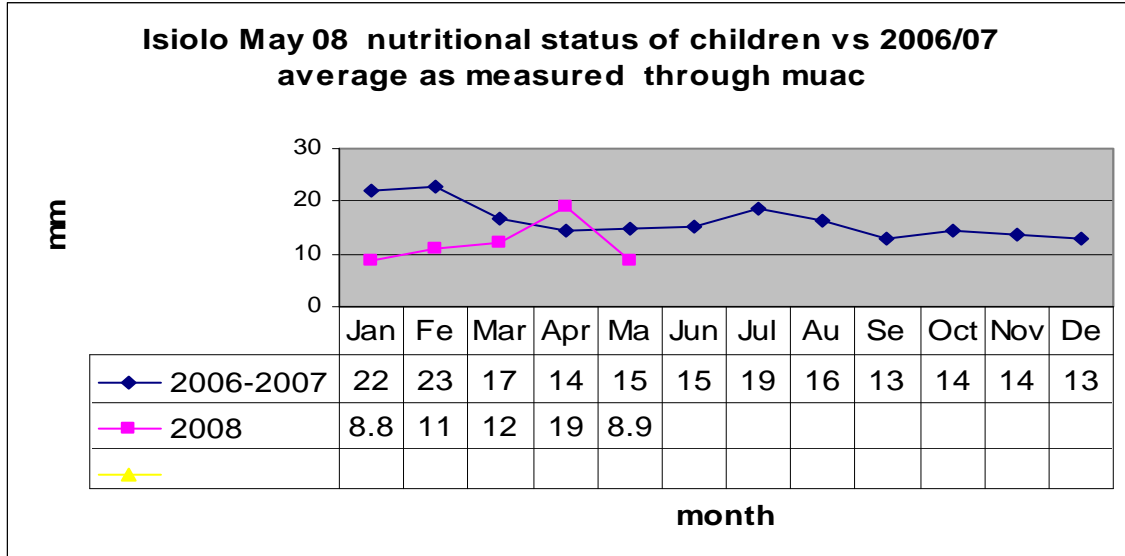


#### 3.4 Implication on food security

- The increase in food commodity prices will negatively affect the food security in Isiolo District, compounded by further food shortages in the market, as a result of no harvests.

#### 4. Utilization of food (Welfare Indicators)

##### 4.1 Nutritional status



- Nutritional status in children under five years (MUAC<135mm) improved to 8.9% compared to last months 19% as a result of the availability of milk, an increase by 10% from previous month of April.
- The percentage improved in comparison with the long term mean.
- Below normal malnutrition rates were observed in in Kinna and Sericho (MUAC 18% and 14.2% respectively). Korbessa and Malkagalla Locations of Merti Divisions are also stressed due outbreak of Leishmaniasis disease (Kalaazar) that affected the vulnerable categories.

#### **4.2 Health**

- The children's health status deteriorated in Merti and Cherab Divisions during the month of May, due to the outbreak of the kalaazar disease. Fifteen (15) children suffering from the disease was referred to Wajir District Hospital, two died while the rest are improving.
- More investigation needs to be undertaken on the disease.

#### **4.3 Flagged areas**

- Merti and Cherab Divisions are currently experiencing cases of the kalazar disease.

### **5. Current interventions and coping strategies.**

#### **Non-Food:**

- Fifteen children suspected of kalaazar were taken to Wajir District hospital.
- Training on the identification of army worms, control measures were undertaken in Sericho, Kinna, Merti and Central Division.
- Spray pumps and chemicals supplied to farmers to control army worms.
- Vaccination against black quarter, anthrax and contagious caprine pleuro pneumonia was done in Sericho, Badana, Iresaboru, Gotu and Barambate.
- The on going construction of piping systems and tanks in Biliqo.
- Canals improvement in Gafarsa by the irrigation department and the community.

#### **Food:**

- EMOP dispatched general food distribution to Merti, Garbatula, Kinna, Oldonyiro, Sericho and Central. This included; maize 545 bags of 50kg each, cornmeal 6,796 of 25kg each, pulses 685 bags of 50kgseach, vegetable oil 519, CSb 415 bags of 25 kg and salt 41.7 Kgs.
- EMOP also distributed food for assets to four (4) projects in Oldonyiro and to all 22 dispensaries in the two Districts, to benefit the under five year group of children and lactating/pregnant mothers.