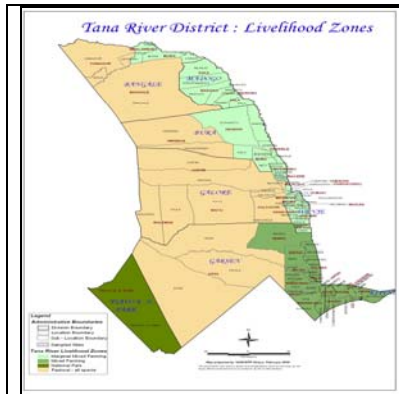


Arid Lands Resource Management Project II

Revised Early Warning System

Drought Monitoring Bulletin: TANA RIVER DISTRICT
Period: May 2008.

TANA RIVER



WARNING STAGE

LIVELIHOOD ZONE	STAGE	TREND
Mixed Farming Zone	Alert	Improving
Marginal Mixed Farming Zone	Alert	Improving
Pastoral Zone	Alert/ Alarm	Constant
DISTRICT	Alert/Alarm	Improving

TIME LINE ACTIVITIES

<ul style="list-style-type: none"> Milk yield drops Livestock move towards dry seasons grazing areas 	<ul style="list-style-type: none"> High milk yield Livestock move towards the traditional wet season grazing areas. High Calving and lambing rates. 	<ul style="list-style-type: none"> Low milk availability Livestock move towards the fall back dry seasons grazing areas (riverine and delta) 	<ul style="list-style-type: none"> High Milk yield Livestock move back to the traditional wet season grazing areas. Calving rates increases 								
Short dry spell	Long rains	Long dry spell	Short rains								
Jan	Feb	Mar	Apr	May	Jun	Jul	Aug	Sept	Oct	Nov	Dec
↓ Short rains harvest			↓ Planting/weeding			↓ Long rains harvest			↓ Planting/Weeding		

Situation Overview.

- The drought situation is generally rated alert/alarm and expected to improve if the current climatic conditions prevail.
- Most parts of the district received some showers except in the pastoral zone (Wayu, Waldena and Assa) which received negligible amounts and remained dry. The mixed farming zone especially towards the coastal areas continued to receive substantial amounts.
- The condition of natural vegetation and pasture is generally rated fair as the pasture situation has improved and currently available in the traditional grazing areas except in the areas where the rains were reported to have failed.
- The water situation is still favourable in most parts of the Mixed Farming and Marginal Mixed Farming areas however the Pastoral zone is dry and faced by water deficits.
- Livestock body and health condition is rated fair in most parts of the district. Suspected out break of CCPP was reported in some parts of the district
- There was a general decline in the prices of all species of livestock. The prices of food stuff however continued to escalate.
- During the month there was a general improvement in both milk production and milk consumption trends.
- Crops are at different stages of development, while a few farmers have their crops at tussling stage most farmers are still at weeding stage. Some pocket mango harvesting is also going on in parts of the Mixed Farming and Marginal Mixed Farming areas.
- The child nutritional status based on the MUAC slightly improved as during the month the percentage of under-fives rated as being At Risk of Malnutrition dropped to 12.8% from 13.3%
- An outbreak of suspected whooping cough in children below the age of 10 years was reported in parts of Banagale (Buwa location).
- Conflict tension between the Orma and Wardei has slightly eased.

Recommendations to DSG/KFSSG

- General food distribution to go along side Food for Assets activities until after the expected long rains harvest season (July/August) when the food security situation is expected to improve.
- Conduct community trainings on Natural Resource Management in order to afford wise use of the available resources

Current interventions.

Non-Food Aid

- Restocking of shoats to vulnerable and disabled families by the ALRMP-II and Tana River Peace Committee.
- Rehabilitation of both Bura and Hola irrigation schemes going on
- Construction of Dams at Doke and Kamagur earth pans by ALRMP-II.
- Provision of Relief seeds to farming families (maize, cowpeas, green gram) by Kenya Red Cross Society
- Water and Sanitation activities by Germany Agro Action, UNICEF and Water Dept.
- Food for Assets expected to begin very soon.
- Support to farming groups by provision of farm tools and pump sets by ALRMP-II
- Support to orphans through construction of Children's home by ALRMP-II – contract awarded and construction started.
- Support to communities through IGAs – A:LRMP-II.

Food Aid.

- Emergency Food Aid both WFP and GOK kitty.
- Supplementary and therapeutic feeding programmes.

DSG Meetings

The District Steering Group meeting for Tana River district was held on 29th May 2008. The following were deliberated/ recommended.

- Launching of a Flood Emergency Recovery Programme the Kenya Red Cross Society - a 1 year programme
- Food for Assets projects to run alongside general food distribution. Members of the DSG who have not been trained on FFA to be trained on the same.
- The MOH to verify the disease situation in Buwa and come up with a detailed report for rapid response. Meanwhile disease surveillance to be carried out on routine basis.
- Water pumps issued to farming groups which are not being utilized to be repossessed and issued to active farming groups.

1. ENVIRONMENTAL INDICATORS (STABILITY)

1.1 Rainfall.

- Most parts of the mixed farming and marginal mixed farming areas received some showers. The mixed farming areas especially towards the coastal line continued to receive substantial amounts. Most hinterland (pastoral zone) areas however remained dry.

Rain fall figures recorded in respective livelihood zones are as below.

Zone	Amount (mm)
Mixed Farming Zone	205.0mm
Marginal Mixed Farming Zone	28.0mm
Pastoral Zone	11.3mm
Cumulative	244.3mm

- Temperatures are still in the range of 25°C to 30°C.

1.2 Condition of natural vegetation and pasture.

- The condition of natural vegetation and pasture is generally rated fair as the pasture situation has improved and currently available in the traditional grazing areas.
- No significant change was reported in the average distances to grazing areas as it remained within the range of 6km – 7km.
- The situation may deteriorate in the pastoral areas if the rains will completely fail however expected to improve in the mixed farming areas.

1.3 Water Sources and Availability

- The water situation is still favourable in most of the mixed farming and marginal mixed farming areas however, the pastoral zone is dry and faced with water deficits. Most affected areas include Wayu Duka in Galole and Assa in Garsen.
- Average distances and time to water points from the household generally remained constant however slightly increased in the areas where stress is currently being felt as earlier reported.
- The main water sources in use during the month included; River Tana, Pans/Dams, Boreholes, Shallow wells and Piped water.

The table below shows the water sources in use and percentage of households accessing during the month of May 2008 compared to April 2008

source	Natural Rivers	Pans/Dams	Boreholes	Natural Ponds	Shallow wells	Traditional river wells	Other sources (Piped water, Lakes, Springs)
May 2008	37.0%	18.0%	3.0%	8.0%	8.0%	8.0%	18.0%
April 2008	31.0%	23.0%	14.0%	3.0%	5.0%	6.0%	18.0%

1.4 Emerging Issues.

1.4.1 Insecurity/conflict /human displacement

- Main incidences include human/wildlife conflicts in terms of crop destruction, livestock and human predation by wildlife (crocodiles, lions, hyenas, warthogs and baboons).

1.4.2 Migration

- No unusual incidences of migrations as most livestock are within the traditional grazing areas.

1.5 Implications on food security

- The pastoral food security especially in the marginal farming and mixed farming zones is expected to improve owing to expected increase in milk yield, stress may still be felt in the pastoral areas where water conditions are unfavourable.

2.0 RURAL ECONOMY INDICATORS (FOOD AVAILABILITY)

2.1 Livestock Production.

2.1.1 Livestock body condition

- Livestock body and health condition is rated fair in most parts of the district. Suspected out break of CCPP was reported in Buwa Banagale division, Nanighi in Bura and Sala in Madogo while isolated cases of worms, tsetse infections and foot and mouth were reported in most areas of the mixed farming areas.

2.1.2 Livestock diseases

- Main livestock diseases reported during the month include CCPP mainly reported in Nanighi and Milalulu areas while worms mainly in Kipini.

2.1.3 Milk production

- During the month there was a general improvement in the milk production and consumption trends. This could be due to improved range resources and reduced distances to water and grazing areas.

2.2 Crop Production

2.2.1 Timeliness and condition of various crop productions

- Though the maize crops are at different stages of development, most farmers in the mixed farming zone and the southern parts of the marginal mixed farming zone have their crop at weeding stage and the crop is doing well due to continued showers. However in the northern parts of the marginal mixed farming, crops are feared to wilt before maturity as the areas has begun experiencing harsh climatic conditions.

2.2.2 Pests and diseases

- Incidences of grasshoppers on maize were reported in the northern parts of the marginal mixed farming zone.

2.2.3 Harvests

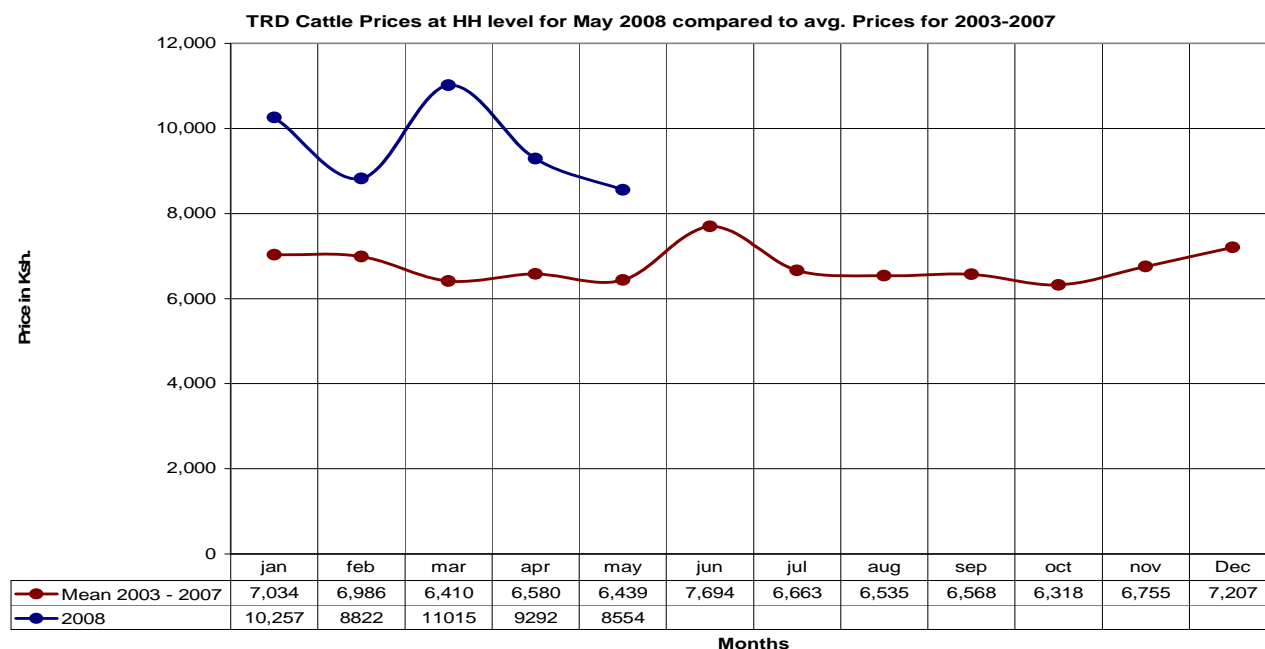
- Pocket mango harvesting going on in most parts of the district.

2.2.4 Implications on food security

- Mango harvesting is expected to improve the food security situation however, this time round the yield is so low and with just a few farmers harvesting.
- This period until expected harvest season (July/August) also happens to be the most stressed period for the agronomists in terms of food availability.

2.3 Livestock marketing

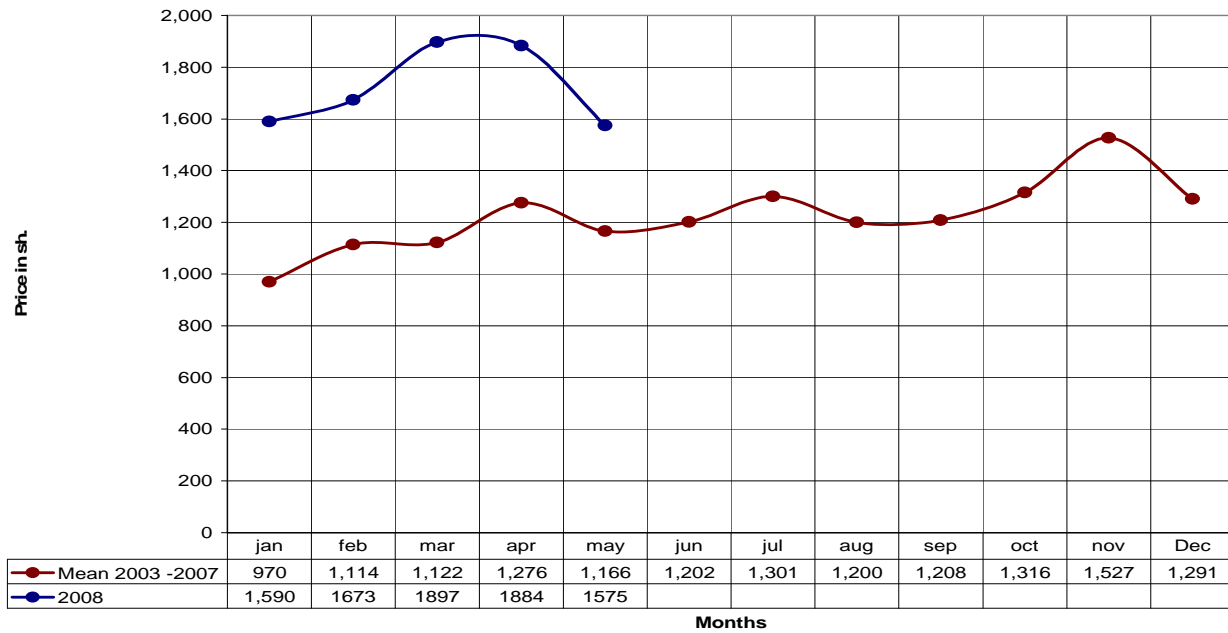
2.3.1 Cattle Prices



- During the month, the price of cattle dropped to Ksh8, 554/= from last months Ksh9, 292/=.
- The price so observed is still above the long term seasonal average price of Ksh6, 439/= recorded during the period 2003 - 2007.
- Drop in prices of livestock at this time of the year is not an anticipated scenario however could be due to influx of cattle in the local markets.

2.3.2 Goat Prices

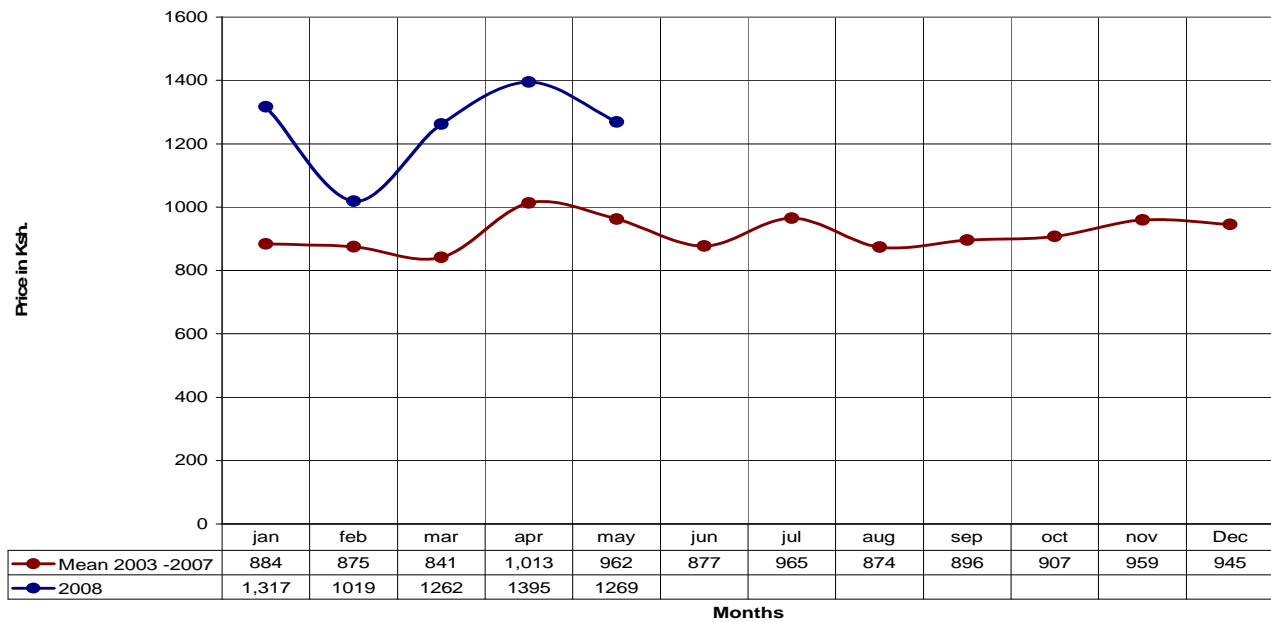
TRD Goat Prices at HH level for May 2008 compared to avg. Prices for 2003-2007



- The price of goats also dropped to ksh1, 575/= from ksh1, 884/=.
- The price is however higher than the long term average price of ksh.1, 166/= recorded during the period 2003 – 2007.
- The prices are expected to increase at this time of year however drop could be attributed by low demand of the same by willing buyers.

2.3.3 Sheep Prices

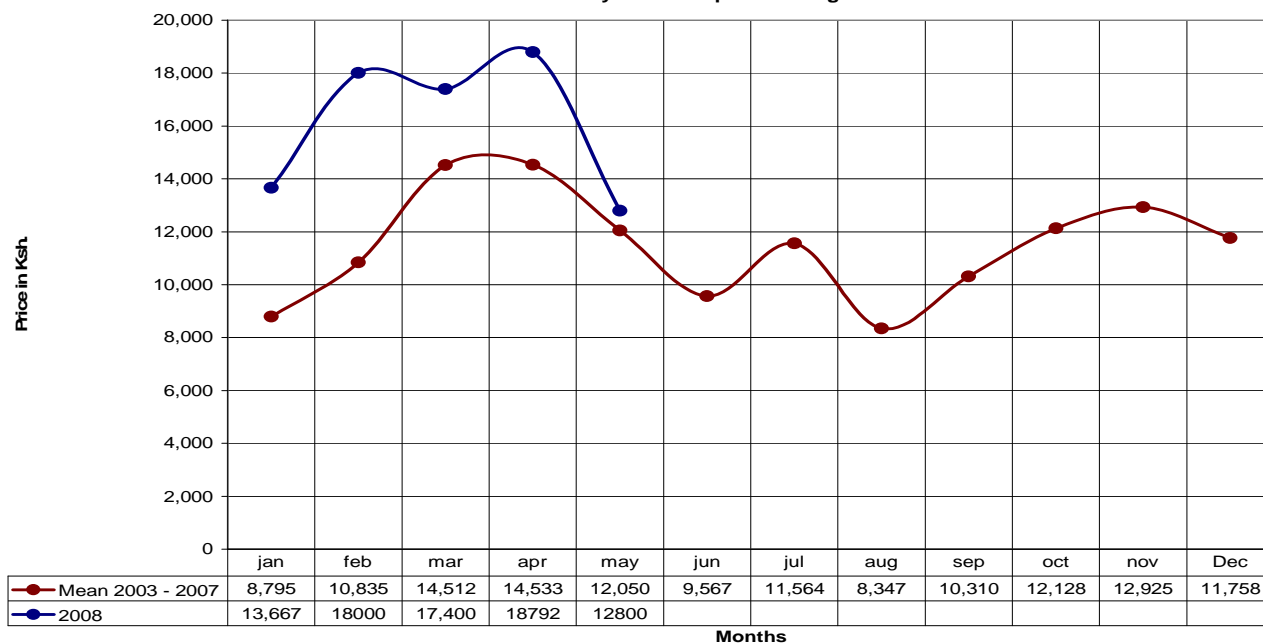
TRD Sheep Prices at HH level for May 2008 compared to avg. Prices for 2003-2007



- The price of sheep dropped to ksh.1, 269/= compared to kshs.1, 396/= of last month.
- The price so observed is above the seasonal average price of kshs.962/= observed during the period 2003 – 2007.
- High prices are anticipated at this time of the year however, slight drop experienced during the reporting period could have been due to the reasons earlier highlighted.

2.3.4 Camel Prices

TRD Camel Prices at HH level for May 2008 compared to avg. Prices for 2003-2007



- During the month the price of camel declined to ksh.12, 800/= compared to Ksh.18, 792/= of last month.
- The current price is also higher than the seasonal average price of ksh.12, 050/= observed during the period 2003 – 2007.
- The price of camel is however highly unpredictable as it depends on the market and the size of animal being offered.

2.4 Livestock sales

- There was a slight drop in the sales rate of almost all species of livestock.
- This is anticipated at this time of the year as pastoralists tend to depend more on livestock products.

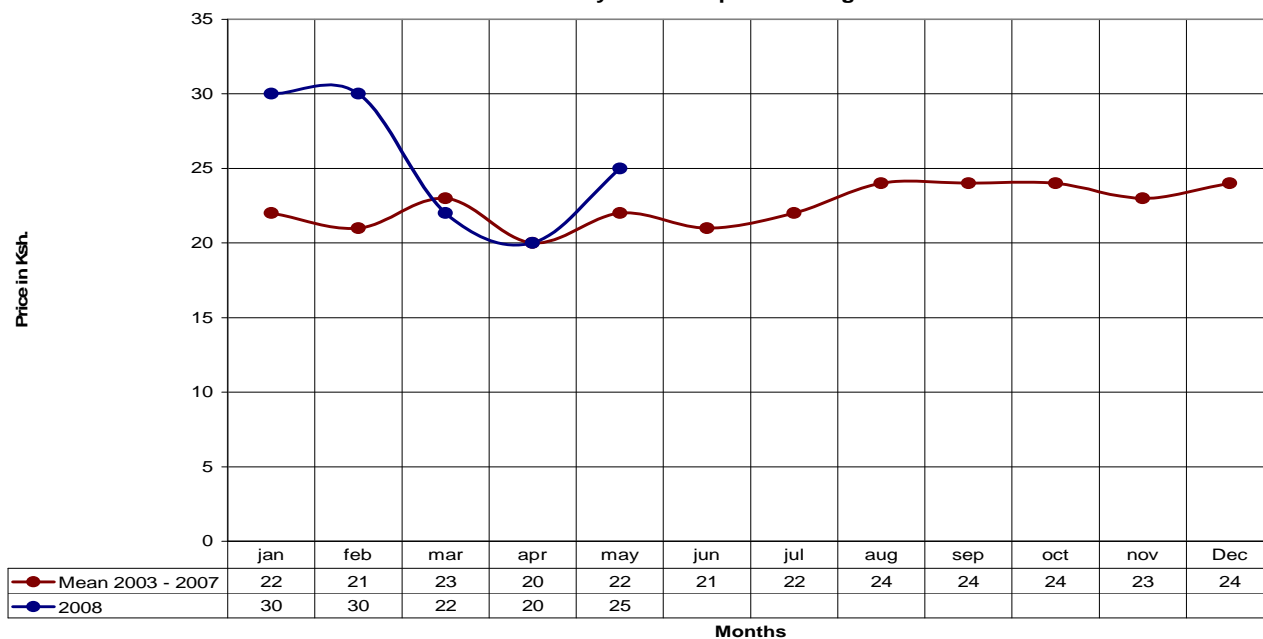
2.5 Milk consumption

- During the month milk consumption trends slightly improved and expected to improve further as the yield is expected to continue improving.

2.6 Crop prices

2.6.1 Maize Prices

TRD Maize Prices at HH level for May 2008 compared to avg. Prices for 2003-2007



- During the month maize realized an average price rise from ksh.20/= to ksh.25/=.
- The price so recorded is also above the long term seasonal average price of ksh.22/= which was recorded during the period 2003 – 2007.

- High prices of food commodities at this time of the year are normal due to scarcity of the same in the household stocks and local markets. This time round the situation is said to have been exaggerated by the post violence and substantial hike in petroleum products.

2.7 Income

2.7.1 Crop income

- During the reporting period, negligible incomes from sale of crops were recorded as no harvests were reported.

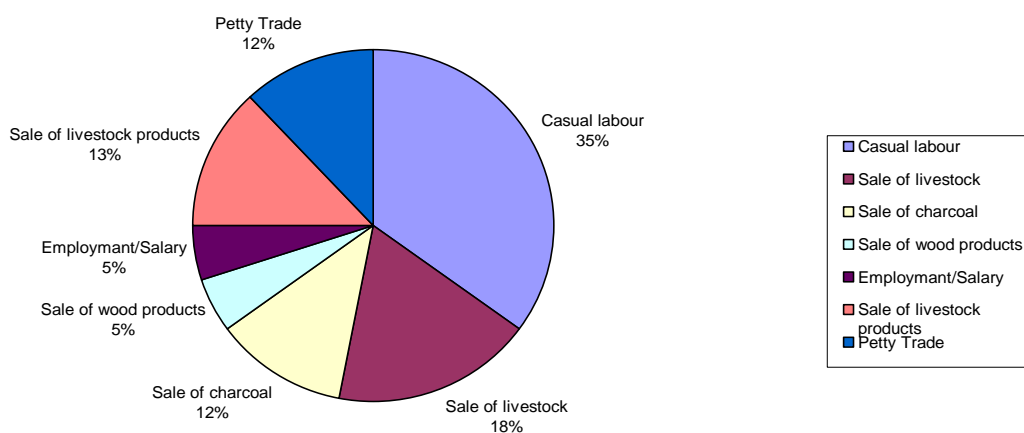
2.7.2 Livestock income

- Incomes from the sale of livestock and livestock products increased to 31% from 30% of last month.
- This could be due to increased milk production at household level therefore leading to enhanced sale of milk products. .

2.7.3 Other income

- These include casual labour 35%, petty trade 12%, sale of charcoal 12%, wood/wood products 5% and salary/employment 5%.

TRD Main Sources of Income at HH level for the Month of May 2008



2.8 Implications on food security.

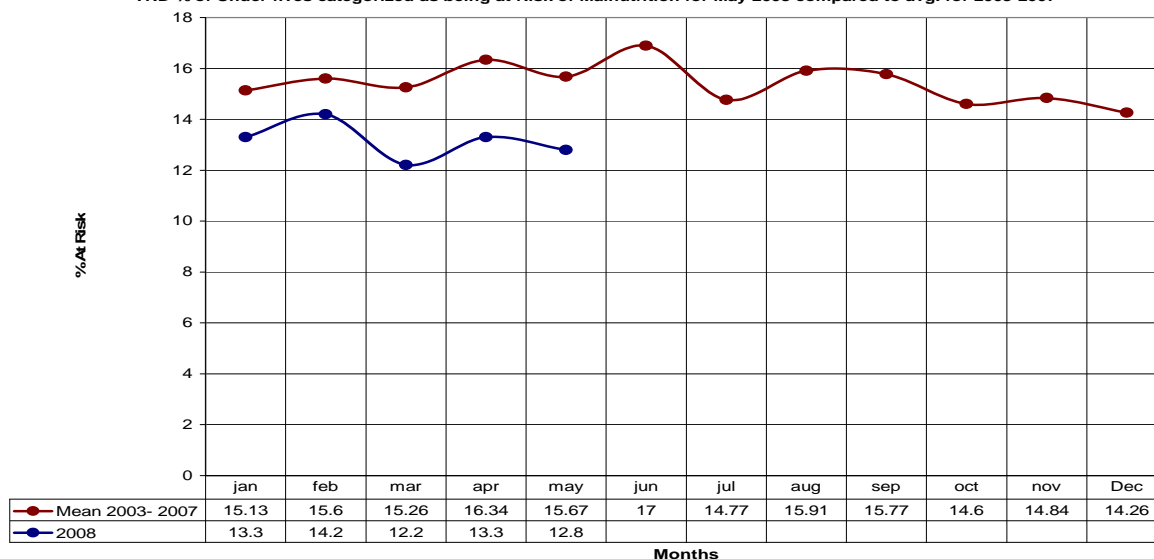
- The pastoral food security is expected to improve as milk production improves. Livestock prices are also expected to stabilize therefore impact positively on the food security.
- However, this expected improvement may have no meaningful impact on the food security as the trading terms are feared to be undermined by the continuing rise of the prices of food commodities.

4.0 WELFARE INDICATORS (UTILIZATION OF FOOD):

4.1 Nutrition Status.

- The child nutritional status based on the MUAC slightly improved as during the month the percentage of under-fives rated as being At Risk of Malnutrition dropped to 12.8% from 13.3%.
- The current rates are better compared to long term seasonal rates of 15.67% recorded during the period 2003 -2007.
- Areas recording high levels of children rated At Risk of being malnourished are Bura 27%, Bangale 24.1%, and Madogo 13.1%.

TRD % of Under-fives categorized as being at Risk of Malnutrition for May 2008 compared to avg. for 2003-2007



4.2 Human Health.

- Apart from Malaria which was reported to be on the rise, other diseases reported include persistent cough in the less than 10 years reported in parts of Bangale, Madogo and Galole. Other diseases reported include bilharzias in the wet parts of Kipini and around the dams.

5.0 Current Intervention Measures and Coping Strategies.

5.1 Non-Food Interventions.

- Restocking of shoats to vulnerable and disabled families by the ALRMP-II and Tana River Peace Committee.
- Rehabilitation of both Bura and Hola irrigation schemes going on
- Construction of Dams at Doke and Kamagur earth pans by ALRMP-II – contracts already awarded.
- Provision of Relief seeds (maize, cowpeas, green gram) by Kenya Red Cross Society
- Water and Sanitation activities by Germany Agro Action, UNICEF and Water Dept.
- Food for Assets expected to begin very soon.
- Support to farming groups by provision of farm tools and pump sets by ALRMP-II
- Support to orphans through construction of Children's home by ALRMP-II – contract awarded and construction started.
- Support to communities through IGAs – A:LRMP-II

Food Aid

- Emergency Food Aid (EMOP) still going on and slightly up scaled to 37,457 from 35,537 people receiving at 75% ration size.
- Supplementary and therapeutic feeding programmes in hospitals and outreach programmes by the MOH, UNICEF, WFP and Red Cross.

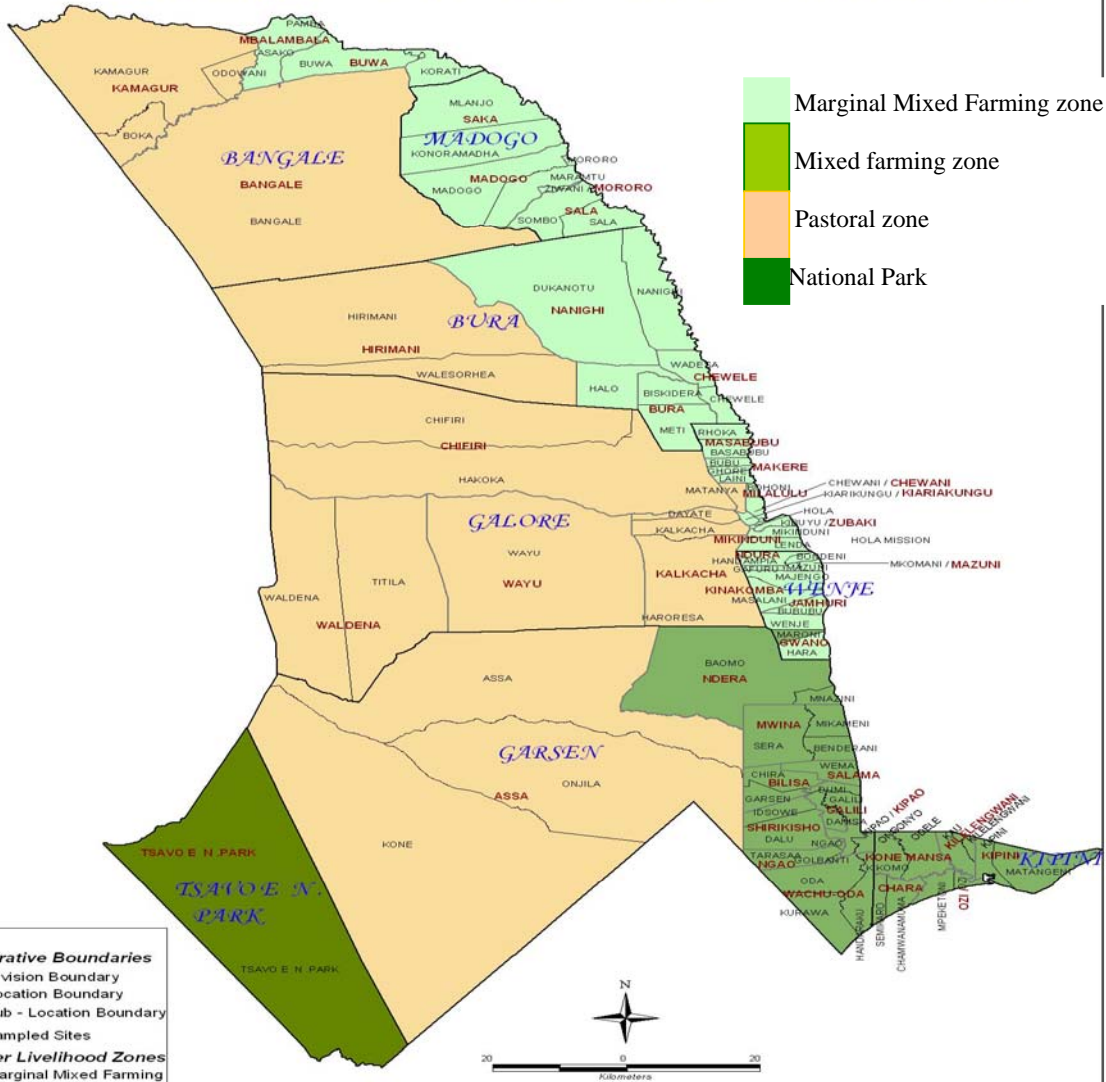
5.3 Other Coping Strategies

- Resort to casual labour
- High dependency on forest products (charcoal and wood products).
- Migrations in search of better pasture and water.
- Reduced number of meals and less preferred foods.

5.4 Recommendations.

- General food distribution to go along side Food for Assets activities until after the expected long rains harvest season (July/August) when the food security situation is expected to improve.
Action: KFSSG/District Steering Group/Partners/Communities
- Veterinary Department is given necessary capacity and support to be able to respond rapidly to areas where livestock diseases have been reported.
Action: DVO/District Steering Group/Partners/Communities
- Conduct community trainings on Natural Resource Management in order to afford wise use of the available resources
Action: DSG/District Forest Officer/NEMA/Partners/Communities

Tana River District : Livelihood Zones



Map prepared by VAMWFP Kenya, February 2006
 The boundaries and names shown and designations used on this map do not imply endorsement or acceptance by the United Nations