

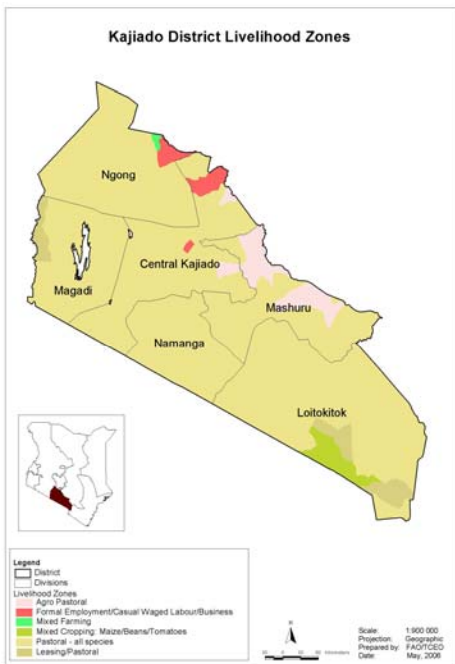


**OFFICE OF THE PRIME MINISTER  
MINISTRY OF STATE FOR THE DEVELOPMENT OF NORTHERN KENYA AND OTHER ARID LANDS  
ARID LANDS RESOURCE MANAGEMENT PROJECT II**

**DROUGHT MONTHLY BULLETIN, NOVEMBER 2008**

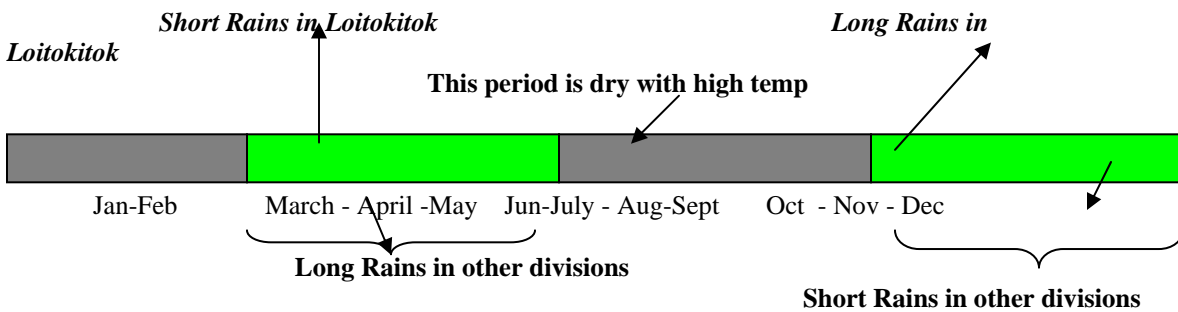
**Kajiado and Loitokitok districts**

**Warning stages**



Livelihood Zone	Warning Stage	Trend
Pastoral-All Species	Alarm	Improving
Agro Pastoral	Alarm	Improving
Casual/Waged Labour/Business /Trade	Alert	Improving
Mixed Farming	Alarm	Improving
District	Alarm	Improving

**SEASONAL CALENDAR**



## Situation Overview

- Wet to dry weather condition prevailed in most parts of Loitokitok and Kajiado, heralding the commencement of OND rains in the second week of November. Intermittent, scattered to moderate rainfall were received in upper Loitokitok (109 mm), parts of Isenya(68.4mm) , Namanga (44.2), Mashuru (53.4mm) , Central(23mm) , upper Ngong (72.7mm). Olkiramatian, Shompole and Olkeri locations received below normal rainfall. The rains however, were not sustained.
- Water availability and accessibility for livestock, agriculture and domestic use improved in all livelihoods. Strategic dry season grazing boreholes and shallow wells were rested owing to availability of water in pans and dams
- The rains recharged key water sources and hastened pasture and forage growth in early November, preventing rapid deterioration in grazing conditions. The distance to water and pasture reduced and accessibility enhanced.
- Livestock body condition was fair for all species but expected to improve in the next few months owing to pasture availability in most parts of the two districts.
- Livestock prices were above long term average, with average cattle price increasing by 8.7%, from Ksh 9,586 to Ksh 10,423, goat prices by 24%, from Ksh 1,288 to Ksh 1,600 between October and November.
- A national vaccination campaign against *Peste des petits ruminants* ( PPR) were ongoing and in the second phase covering the six divisions of Kajiado district.
- The rains accelerated widespread planting of the short rains crop. However, the performance was expected to remain good as long as the temporal and spatial distribution remained favourable through the end of December. In some areas, especially in the marginal rain fed crop areas in the agro pastoral areas of Namanga, Central and Mashuru, the cessation of the rains resulted in water stress.
- Higher-than-average prices were reported across all livelihood zones. Food prices (maize and beans) were relatively high compared to long term average. Maize, beans and posho average prices were Ksh35, Ksh75 and Ksh40 respectively. Most households in the crop growing areas depleted their food stocks and households were dependent on food purchases.
- The number of children with MUAC < 135mm- (At Risk of malnutrition) increased from 8.7% in October to 9.0% but were within the long term average.
- The commencement of OND rains, though belated, will invariably enhance prospects for improved food security, as the rains improved environmental conditions, and were expected to improve and reverse the declining trend in pastoral, agro pastoral and crop growing food security.
- The food security conditions remained at moderately food insecure. However, the rains need to continue through most of December for proper crop and pasture establishment and recovery.

## **Recommendations to DSG and KFSSG**

- Close monitoring of the food and security situation in the district.
- Repeat/mop up vaccination of PPR to attain 80% coverage.
- Cross-sectoral interventions are required to support the recovery process, in the event that the short rains are not sustained through the end of the season.

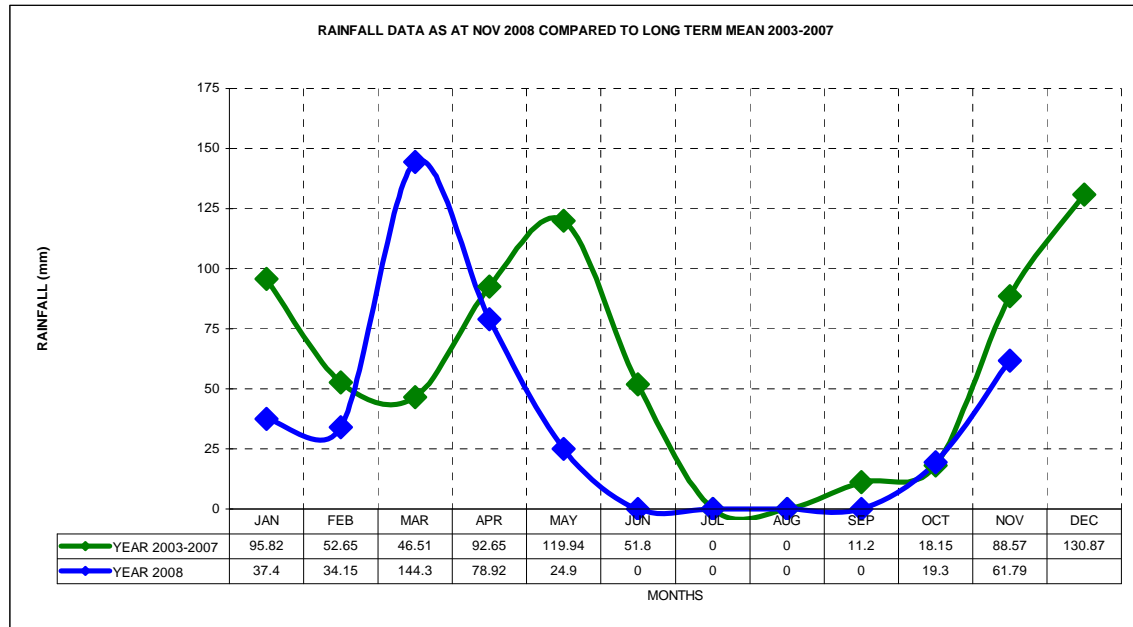
## **Current interventions**

- Monitoring of drought and food security situation (ALRMP EWS early warning system).
- Mop up/repeat vaccination against PPR and community awareness (ALRMP, NIA, MPIDO, MAAP and Vet Aid) – ongoing.
- Piloting of upland rice (Nerica 4) – training and trials in Ngurumani in Magadi ( Mwea Irrigation/DAO/ALRMP).
- Conflict and consultative meeting – Musenke, Olkiramatian and Oldonyonyukie – Magadi.
- Excavation of Oiti Murandawa pan- ongoing.
- Drilling and equipping of Naserian shallow well (ALRMP/MAAP)- completed.
- Livelihood support community trainings.
- GoK relief food aid – 90 x 1,000 bags of Maize (DC Loitokitok)- to start distribution in December 2008, and 90x1500bag of Maize, 50 x 30bags of beans and 411 cartons of Nutropap(District Commissioner, Kajiado) – distribution ongoing.
- Community Contingency planning ( in Meto, Lorngosua and Maparasha locations in Namanga) – ALRMP/DMI/World Vision Osiligi).
- Rehabilitation of irrigation infrastructure in Loitokitok by NIA and JICA.

## **1.0 Environmental indicators (stability)**

### **1.1 Rainfall**

- Wet to dry weather conditions prevailed in most parts of Loitokitok and Kajiado during the month.
- Overall intermittent, scattered to moderate rainfall was received in upper Loitokitok (109 mm), parts of Isinya (68.4mm), Namanga (44.2), Mashuru (53.4mm), Central(23mm), upper Ngong (72.7mm), Olkiramatian, Shompole and Olkeri locations received below normal rainfall.
- The observed trend was below normal for the month due to poor rainfall distribution.



\* Source: ALRMP sample area data stations

## 1.2 Condition of natural vegetation and pasture

- Quantity and quality of browse and pasture was fair and improving in areas that received rainfall.
- Browse condition was good in most areas. Pasture regeneration started in earnest and was available in green lush form in most areas.
- However, there was little improvement in Enkorika in Central, North Keekonyokie and parts of Central Keekonyokie in Ngong division, Olkiramatian, Shompole and Olkeri locations in Magadi, Merueshi, Nkama and Kenyewa locations in Mashuru division.
- Pastoralists started returning to their WSGA but owing to cessation of the rains, only pastoralists returned to their resident grazing areas. 60% of the livestock was still in the dry season grazing areas of Kiambu escarpment, Ngurumani escarpment, outskirts of Nairobi, conservation areas, areas adjacent to National parks, private ranches and Chyullu hills.
- Due to poor pasture development, zero grazed dairy cattle were using dry maize stover and purchased hay.
- The observed condition in pasture and browse situation was below normal.

### 1.2.1 Distance to grazing areas

- Return distances to grazing areas ranged from 5 to 10 kms in most pastoral areas, and was expected to decrease if the OND rains are sustained.
- In areas that received moderate rainfall, the distance was less than to 5kms e.g. Isinya sub-location, Oldoinyo Orok and parts of Mailwa in Namanga, Imaroro Location in Mashuru division, Oldoinyonyokie location in Magadi, parts of Central Keekonyokie.
- Generally the observed situation was below normal.

### 1.3 Water availability and accessibility

- Most temporary water sources (dams and pans) recharged but at the close of the month, seasonal rivers were dry.
- Use of strategic boreholes, shallow wells and pipe lines reduced in most areas.
- The observed situation at the time of the year was below normal. On a normal year, temporary water sources are usually recharged.

**Table 2: Water sources and percentage of household using them, compared to a normal situation.**

Water source	Boreholes & Shallow wells	Rivers & springs	pipelines	Dams & Pans
% of households depending on the source	68%	5	7%	20
% of households that depend on the source normally	10%	10%	5%	75%

**Table 3: Average return distances to water sources, compared to a normal situation**

	Boreholes & Shallow wells	Dams and Pans	springs	pipelines
Average Kms to the source	15 Kms	5Kms	15 Kms	15Kms
Normal Kms to the source	3 Kms	3Kms	3Kms	3 Kms

#### 1.3.1 Household access to water

- The average distance reduced to 5km in areas that received rainfall. The average distance to water sources was 15kms in dry areas.
- Return time to water sources for domestic use ranged between 1-3 hours.
- However for areas that received rainfall, the return time reduced tremendously.

#### 1.3.2 Livestock access

- Generally livestock access to water improved in areas that received rainfall, as most water pans and dams impounded water.
- The distance from grazing points to water points ranged from 15-20 kms and 3-4 kms in dry and wet areas respectively.
- Livestock bordering Amboseli National Park watered within the park. Most swamps in Loitokitok recharged.
- Water stress was evident in Mbirikani and Lenkisim.

### 1.4 Emerging issues

- High food prices impacted negatively on purchasing power of pastoralists.
- Clustering of livestock and wildlife in areas with green pastures.

- Human/wildlife conflicts in the irrigation areas.
- Poor performance of crop in the rain-fed crop growing areas of Namanga, Mashuru and Central division associated with water stress.

## **2.0 Rural economy indicators (food availability)**

### **2.1 Livestock production**

#### **2.1.1 Livestock body condition**

- All livestock species maintained fair to good body condition.
- This was mainly attributed to improved pasture and water availability in most parts of the two districts, and was expected to improve further if the rains are sustained.
- The livestock (cattle) body condition was below normal but expected to improve in the next one month.
- The observed trend had positive implications on food security at household level.

#### **2.1.2 Livestock health**

- Livestock maintained fair to good health condition.
- Prevalent diseases were tick borne disease, pox in small stock and CCPP in goats.
- Trypanosomiasis in cattle was reported in Nguruman, Magadi division and Chyullu and Loitokitok.

#### **2.1.3 Milk production**

- Availability and accessibility of milk in the rural pastoral households was low but improving due to availability of pasture and water.
- The trend on milk consumption had positive implications on food security and nutritional status of children below five years.

#### **2.1.4 Livestock migration**

- There was increased migration (internal) of cattle to areas that received moderate rainfall during the month.
- Browse for small stock was available in most areas.

### **2.2 Crop production**

#### **2.2.1 Timeliness and status of crop production activities**

- The main crop production activities in the rain-fed agriculture and agro-pastoral areas were planting and first weeding.
- Overall crop performance across the two districts was fair to good.

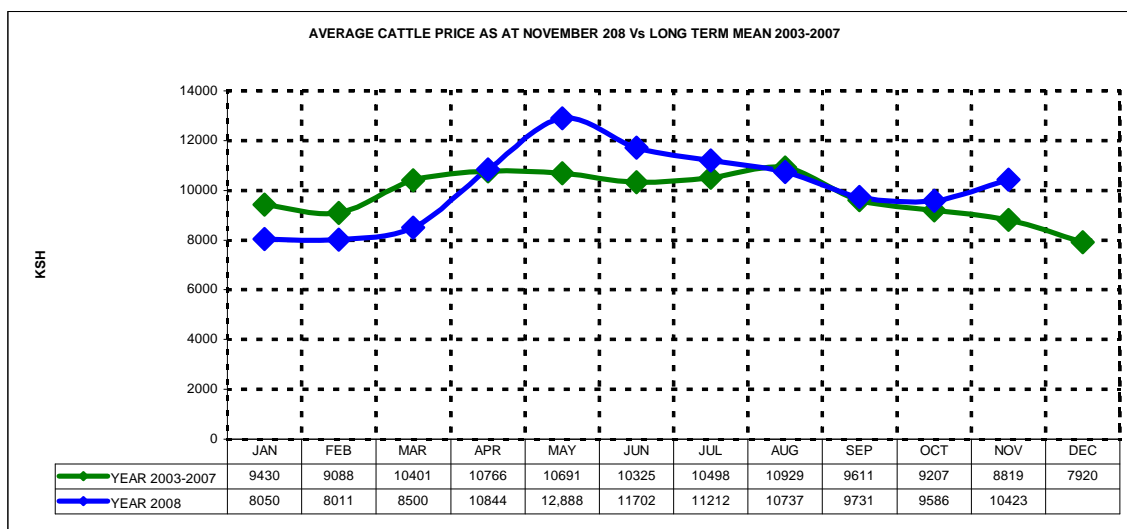
#### **2.2.2 Implications on food security**

- Food security situation in the district remained precarious.
- However, with improved livestock body condition the situation was expected to improve.
- High cereal prices and general increase in food crop prices had negative implications on food security at household level.
- Availability of milk at rural household level was on upward trend and had positive implication on food security.

### 3.0 Access to food

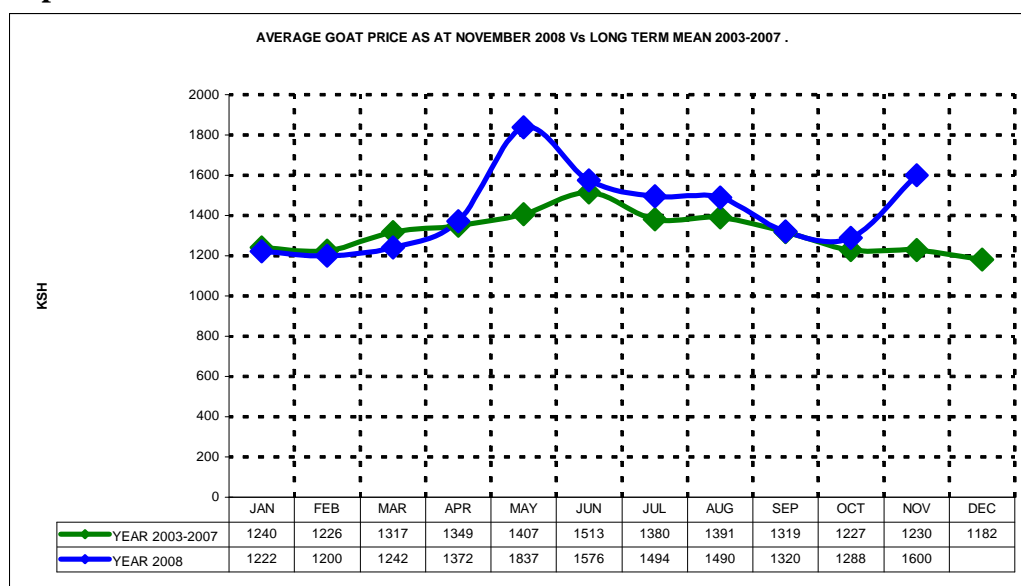
#### 3.1 Livestock marketing

##### 3.1.1 Cattle prices



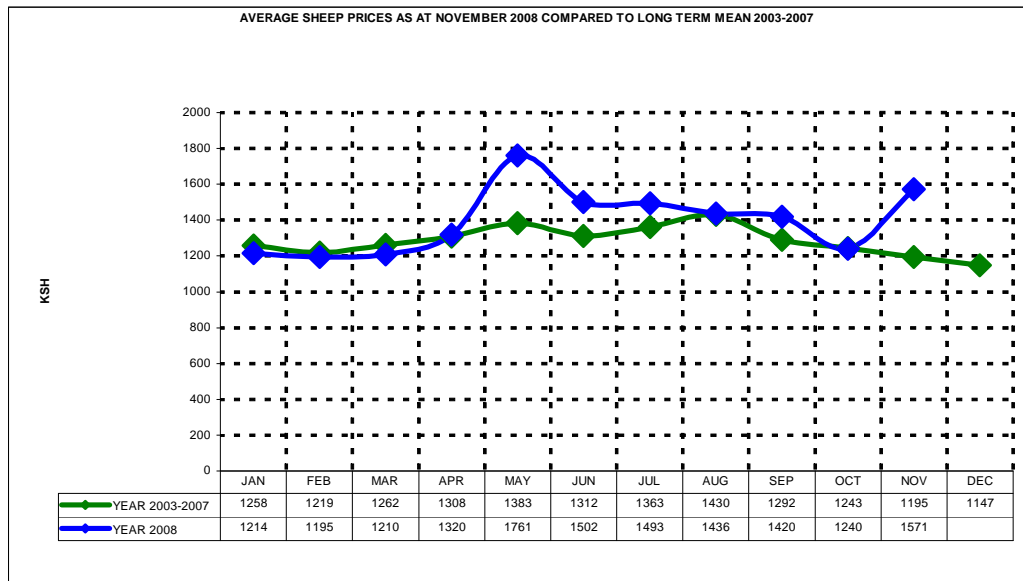
- The average cattle price increased by 8.7%, from Ksh 9,586 in October to Ksh 10,423.
- The price was above the long term average and the increase was mostly attributed to decline in number of livestock offered for sale against constant demand.
- The increase in livestock prices had positive implications on food security at house hold level.
- The observed price trend was normal during the time of the year.

##### 3.1.2 Goat prices



- Average goat prices increased by 24 % during the month.
- The price rose to Ksh1,600 , from Ksh1,288 in October.

### 3.1.3 Sheep prices



- The average price of sheep increased by 26.6% from Ksh 1,230 in October to Ksh1,571 in November 2008.
- The increase was attributed to decline in number of livestock offered for sale against constant demand.
- The increase in livestock prices had positive implications on food security at household level.

### 3.1.4 Milk consumption

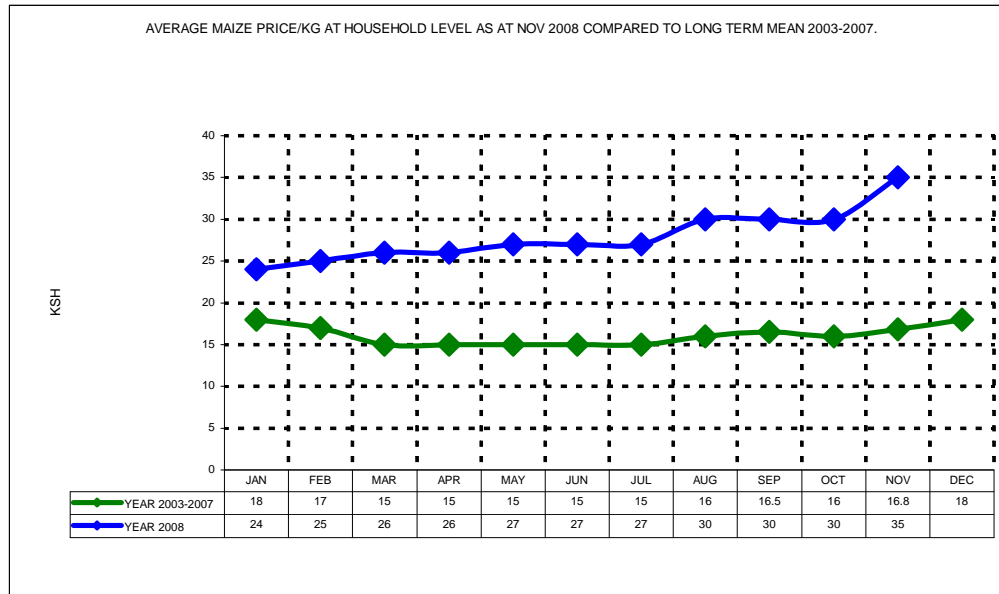
- Availability and accessibility of milk in rural pastoral households was on upward trend in areas that received rainfall.
- Most households in the pastoral households were depending on cereal and pulses purchases, constituting 60-70% of household diet.

### 3.2 Implications on food security

- The increase in livestock prices impacted positively on
- While November is typically a period of declining prices, prevailing prices were high across key markets and substantially far higher than the same time last year and their respective long term averages in markets in all livelihood zones.
- However, higher than normal maize prices combined with rising prices of other food and non-food commodities, will negate the gains of improved prices considering that pastoral areas traditionally net buyers of food commodities.

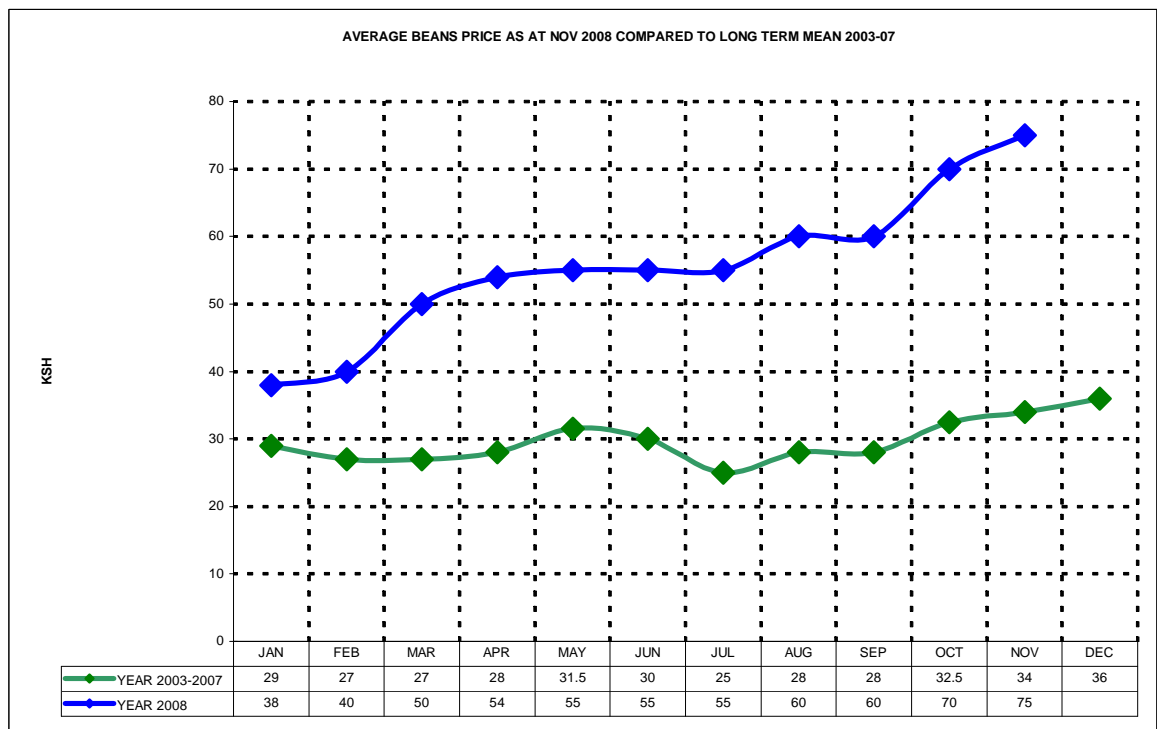
### 3.3 Crop prices

#### 3.3.1 Maize prices



- The average maize price increased by 16% from Ksh30 in October to Ksh 35 per kilo.
- Prices were expected to increase before the next harvest season.
- The two districts depend on imports from the bordering districts and Tanzania through Namanga and Loitokitok border points.

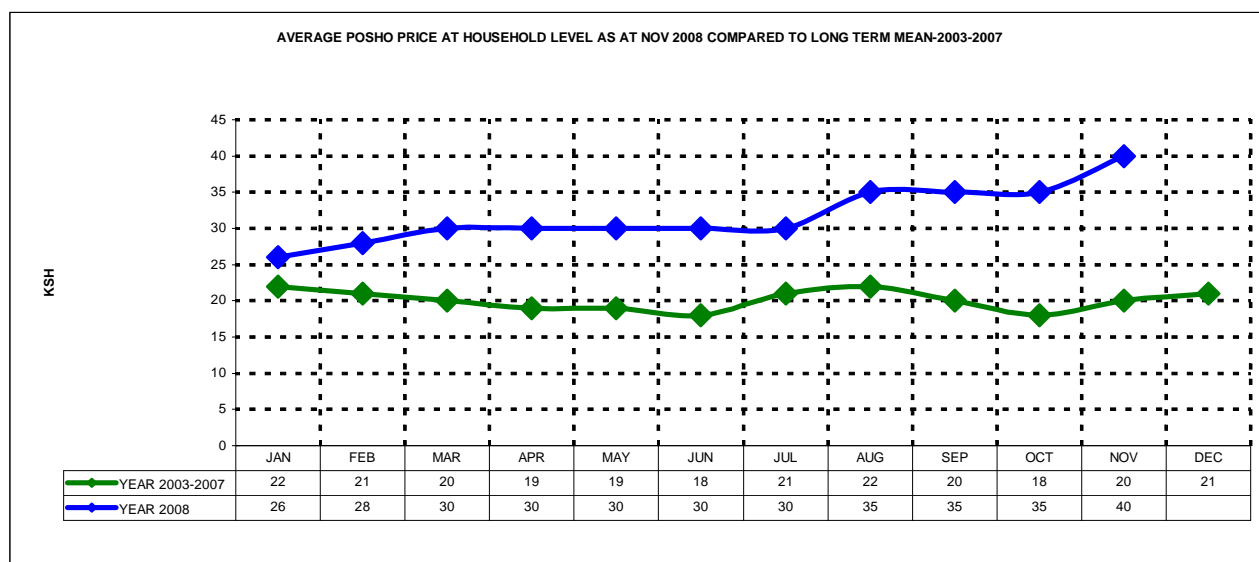
### 3.3.2 Beans prices



- The average beans price increased by 7.1% from Ksh 70 in October to Ksh 75 per kilo.
- Residents of the two districts depend on imports from the bordering districts and Tanzania through Namanga and Loitokitok border points.

### 3.3.3 Purchase of other food commodities

#### 3.3.3.1 Posho (maize meal) prices



- During the review period, the average posho price increased from Ksh 35 to Ksh 40 per kilo.
- The average price was above normal and the observed trend was above normal compared to long term mean.
- Increase in price was attributed to scarcity of the produce due to three successive crop failure across the district and limited supply from external sources.
- High cereal prices and general increase in food crop prices had negative implication on food security at household level.

### 3.5 Incomes

#### 3.5.1 Crop income

- There was no crop income in rain-fed crop growing areas.
- Crops were in their early stages of growth.
- Farmers in the irrigation areas gained from the sale of farm produce e.g. tomatoes, cabbages, sukumawiki, onions and Asian vegetables from irrigation schemes in Magadi and Loitokitok.

#### 3.5.2 Livestock income

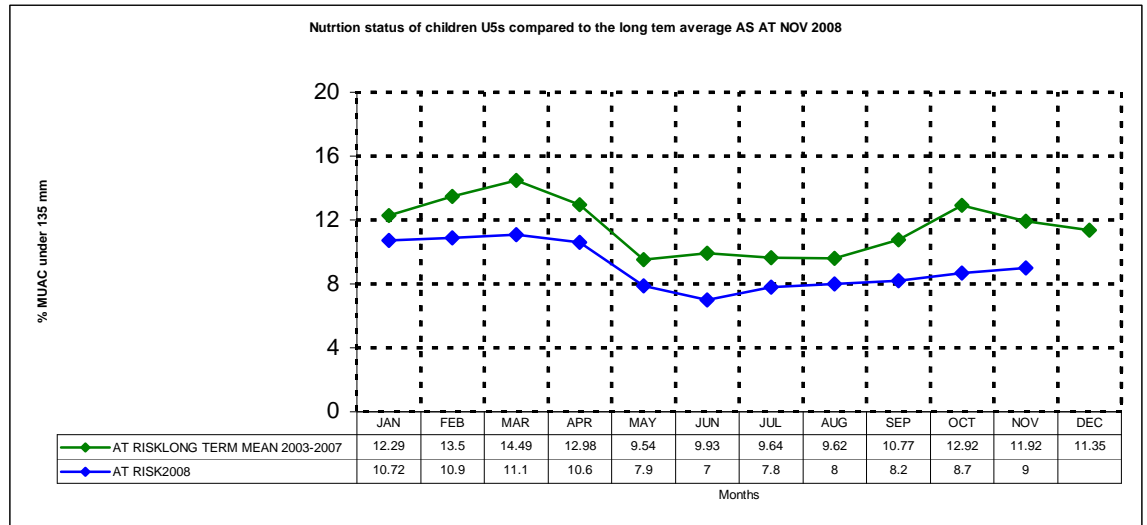
- Internal migration of livestock constrained livestock marketing activities, as most returned to wet season grazing areas.
- Livestock prices were on upward trend owing to improved body condition, and pastoralists holding back their stock, causing low supply to the market.

### 3.5.3 Terms of trade for pastoralists

- Pastoralists terms of trade improved compared to the previous month as the prices were above the long term average.
- However, increased food prices negated the gains made.
- Improved livestock prices had a positive implication on household food security at household level.

## 4.0 Welfare indicators (utilisation of food)

### 4.1 Nutrition status



- Generally, nutrition status of children under 5 years was within the accepted seasonal ranges.
- The number of children with Mid Upper Arm Circumference (MUAC) less than 135mm (rated at risk of malnutrition) increased by 0.3%, from 8.7 in October to 9%.
- The high rates were attributed to unavailability of milk in rural households in the last 3 three months.
- However, the trend was expected to improve due to availability of milk at household level.

### 4.2 Human health

- Most common diseases reported during the month were malaria, diarrhoea and respiratory tract infections (RTI).
- Malaria was common in the pastoral areas.

## 5.0 Current interventions and coping strategies

### 5.1 Non-food interventions

- Monitoring of drought and food security situation (ALRMP EWS early warning system).

- Mop up/repeat vaccination against PPR and community awareness (ALRMP, NIA, MPIDO, MAAP and Vet Aid) – ongoing.
- Piloting of upland rice (Nerica 4) – training and trials in Nguruman in Magadi ( Mwea Irrigation/DAO/ALRMP).
- Conflict and consultative meeting – Musenke, Olkiramatian and Oldonyonyukie – Magadi.
- Excavation of Oiti Murandawa pan- ongoing.
- Drilling and equipping of Naserian shallow well (ALRMP/MAAP)- completed.
- Livelihood support community trainings.
- Community Contingency planning ( in Meto, Lorngosua and Maparasha locations in Namanga) – ALRMP/DMI/World Vision Osiligi).
- Rehabilitation of irrigation infrastructure in Loitokitok by NIA and JICA.

### **5.2 Food aid**

- GoK relief food aid – 90 x 1,000 bags of Maize (DC Loitokitok)- to start distribution in December, and 90x1500bag of Maize, 50 x 30bags of beans and 411 cartons of Nutropap(District Commissioner, Kajiado) – distribution ongoing.

### **5.3 Coping strategies**

- Migration to areas that received rains.
- Charcoal burning and sand harvesting.
- Purchase food on credit.
- Livestock sales to purchase food and petty trade (women).
- Purchase of livestock feeds.
- Remittances.

### **6.0 Recommendations**

- Close monitoring of the food and security situation in the district.
- School Feeding Programme: up scaling of budgetary allocation to facilitate smooth operation (transportation of food) of RSFP in the district.
- Repeat/mop up vaccination against PPR to attain 80% vaccination coverage.
- Cross-sectoral interventions required to support the recovery process in the event that the short rains are not sustained through the end of the season.
- Monitoring of drought and food security situation (ALRMP EWS early warning system).