

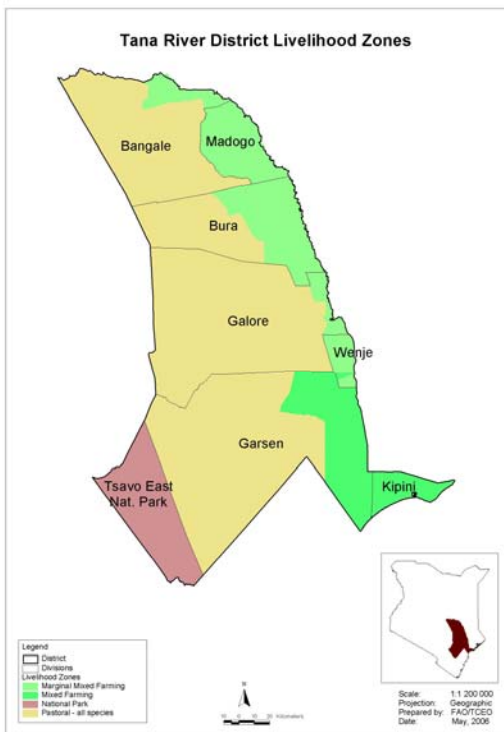


**OFFICE OF THE PRIME MINISTER
MINISTRY OF STATE FOR THE DEVELOPMENT OF NORTHERN KENYA AND OTHER ARID LANDS
ARID LANDS RESOURCE MANAGEMENT PROJECT II**

DROUGHT MONTHLY BULLETIN, NOVEMBER 2008

Tana River District

Warning Stages



Livelihood Zone	Stage	Trend
Mixed Farming Zone	Alert	Improving
Marginal Mixed Framing Zone	Alert	Improving
Pastoral Zone	Alert/Alarm	Improving
DISTRICT	Alert	Improving

TIME LINE ACTIVITIES

<ul style="list-style-type: none"> Milk yield drops Livestock move towards dry seasons grazing areas 			<ul style="list-style-type: none"> High milk yield Livestock move towards the traditional wet season grazing areas. High Calving and lambing rates. 			<ul style="list-style-type: none"> Low milk availability Livestock move towards the fall back dry seasons grazing areas (riverine and delta) 			<ul style="list-style-type: none"> High Milk yield Livestock move back to the traditional wet season grazing areas. Calving rates increases 		
Short dry spell			Long rains			Long dry spell			Short rains		
Jan	Feb	Mar	Apr	May	Jun	Jul	Aug	Sept	Oct	Nov	Dec
↓ Short rains harvest			↘ Planting/Weeding			↘ Long rains harvest			↘ Planting/weeding		

Situation Overview

- Most parts of the district received some rains, with the northern and pastoral dominated areas receiving higher amounts of rainfall than the southern parts of the district. However, the rains came late and were erratic.
- There was great improvement on the water situation as most pans and dams accumulated adequate amounts of water, while catchments pools also harvested some water.
- The condition of natural vegetation improved as the pasture and browse regenerated in most parts.
- The livestock body and health condition was rated fair in almost all parts of the district. However outbreak of CCPP was reported in parts of Madogo (Sala).
- During the month there was a general rise in the prices of almost all species of livestock.
- Milk production and consumption patterns at the household level generally improved compared to last reporting period.
- The nutrition status of children below five years recorded an improvement compared to the last reporting period. The number of those categorized as being at risk of malnutrition (based on the MUAC <135mm measurement) dropped to 12.6% compared to 13.4% last month.
- Though there was no conflict between the Orma and Wardei communities, indications were that the relationship was still fragile and needs to be closely monitored.

Recommendations to DSG/KFSSG

- Supplementary and therapeutic feeding programmes to continue and be enhanced in the flagged areas.
- Enhance disease surveillance and livestock vaccination in those areas where outbreak of CCPP was reported.
- As the relationship between the Wardei and Orma communities is still fragile there is need for more peace initiatives to restore harmony and peace so as to curb anticipated conflicts.

Current interventions

Non-food interventions

- Livestock vaccination against PPR.
- Surveillance on Rift Valley Fever.
- Brook Management interventions in the lower parts of Tana Delta where river diversions are rampant.
- Water trucking to the most affected pastoralists dominated hinterland areas (however stopped after the onset of the rains) .
- Health immunization campaigns and outreach programmes.

- Food production by use of water harvesting technology.
- Range rehabilitation and reseeded programmes.
- Livestock breed improvement programmes.

Food aid

- EMOP to benefit 41, 579 people in Madogo, Bura, Galole and Wenje.
- School-feeding programme in all primary schools.
- Supplementary and therapeutic feeding programmes in hospitals and outreach programmes.
- General food distribution by the GOK to vulnerable families and floods displaced people in Wayu.

DSG Meeting

A technical DSG was held on November 12 and recommended provision of household kits, water treatment drugs and food aid to flood affected victims in Wayu and Waldena locations.

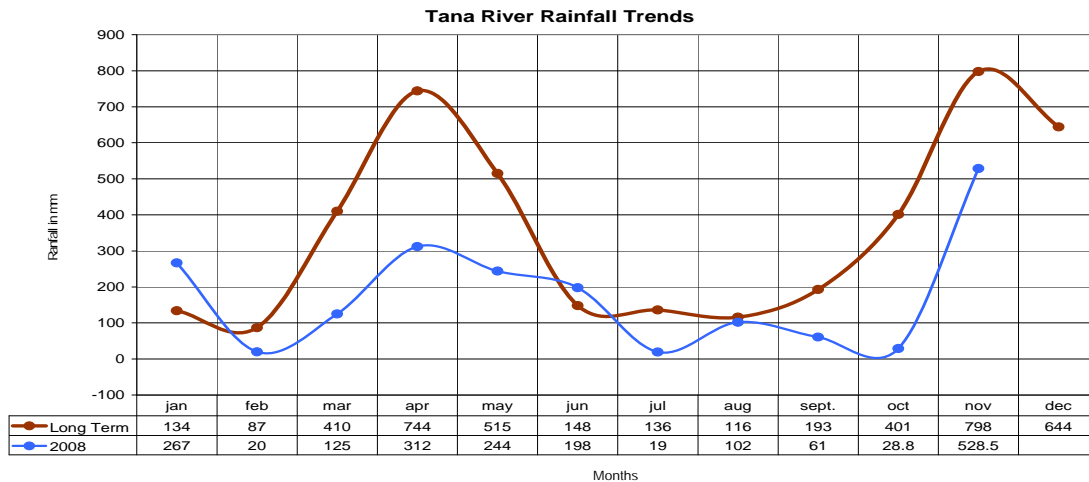
1.0 Environmental indicators (stability)

1.1 Rainfall

- Most parts of the district received some rains. The northern and pastoral dominated areas reported better rainfall than the southern parts of the district.
- The rains, however, arrived late and were erratic, an indication that it would continue raining improving the vegetation but may not sustain crop growth to maturity.

Livelihood Zone	Station	Rainfall in mm
Mixed Farming	• Kipini	• 47.0mm
	• Garsen	• 56.6mm
Marginal Mixed Farming	• Hola	• 87.9mm
Pastoral	• Wayu	• 300.0mm
	• Bangale	• 37.0mm

- During the month the temperatures recorded were between 29°C to 34°C.

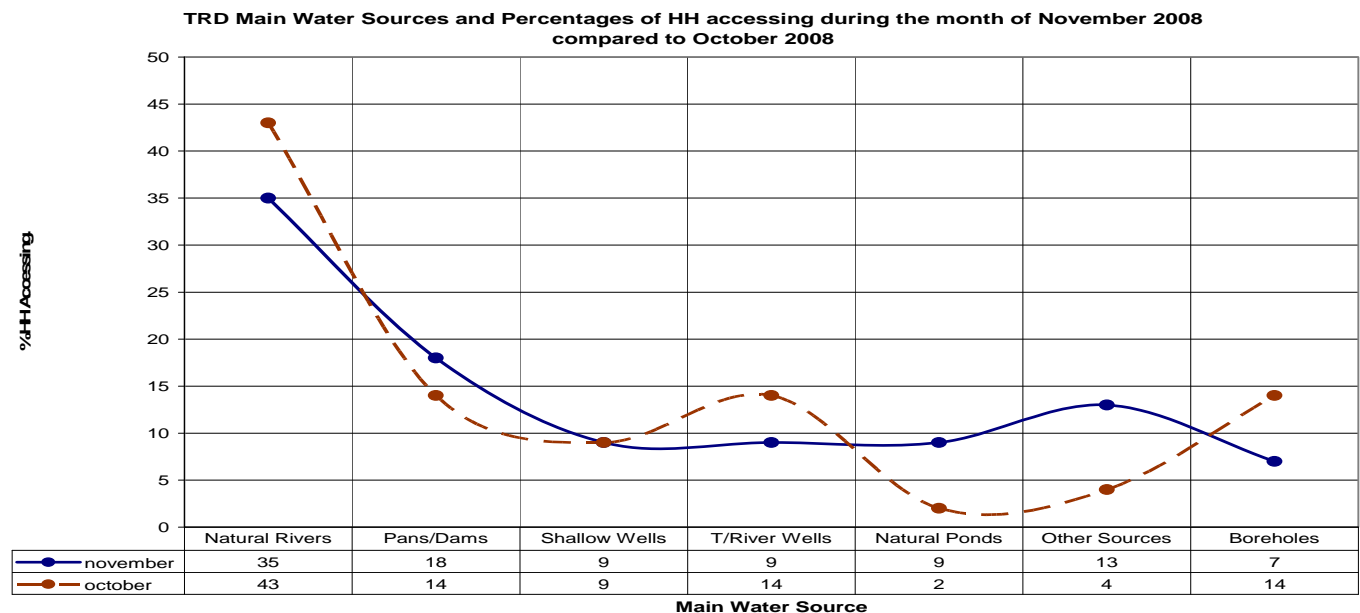


1.2 Condition of natural vegetation and pasture

- There was a general improvement in the condition of natural vegetation as the pasture regenerated in most parts, while the browse and large trees also turned green.
- Average distances to grazing areas generally reduced, recording on average between 7kms – 15kms compared to 10kms – 20kms reported during the last reporting period.

1.3 Water sources and availability

- The situation of water sources and availability generally improved as most of the pans and dams accumulated adequate amounts of water, while catchments pools also harvested some water.
- The main water sources during the month included the River Tana, Pans/Dams, Traditional wells and the taps in the urban centres.
- Distances to water sources from the households reduced and reported at between 0.5km to 2.0km on average.



1.4 Emerging Issues

1.4.1 Insecurity/conflict /human displacement

- Though the relationship between the Wardei and Orma communities was still fragile, no conflict incidences were reported.
- However, incidences of banditry and highway crimes were reported where one person was attacked and injured at Chifiri in Galole. Cases of banditry reported in Village 7 and Village 9 in Bura division and highway robbery reported along the Bura – Garissa road.

1.4.2 Migration

- No unusual cases of migrations were reported.
- However, livestock was expected to move to the wet season traditional grazing areas.

1.5 Implications on food security

- The pastoral food security situation was expected to improve slightly in terms of improved milk availability.
- However the farming communities may still be food insecure.

2.0 Rural economy indicators (food availability)

2.1 Livestock production

2.1.1 Livestock body condition

- The livestock body and health condition was rated fair in almost all parts of the district and expected to continue improving as the range resources becomes favourable.

2.1.2 Livestock diseases

- Livestock diseases reported during the month included cases of CCPP mainly reported in Sala location of Madogo division.

2.1.3 Milk production

- As expected, milk production at the household level increased.
- This may be due to effects of improved range resources earlier reported.

2.2 Crop Production

2.2.1 Timeliness and condition of various crop productions

- Farmers planted at the onset of the rains. The crop in most areas was not doing very well due to the erratic nature of the rains and if the rains do not continue the crop may not grow to maturity.

2.2.2 Pests and diseases

- No outstanding incidences of crop pests and diseases were reported.

2.2.3 Harvests

- Pocket mango harvesting was still going on in parts of the marginal mixed farming zone.

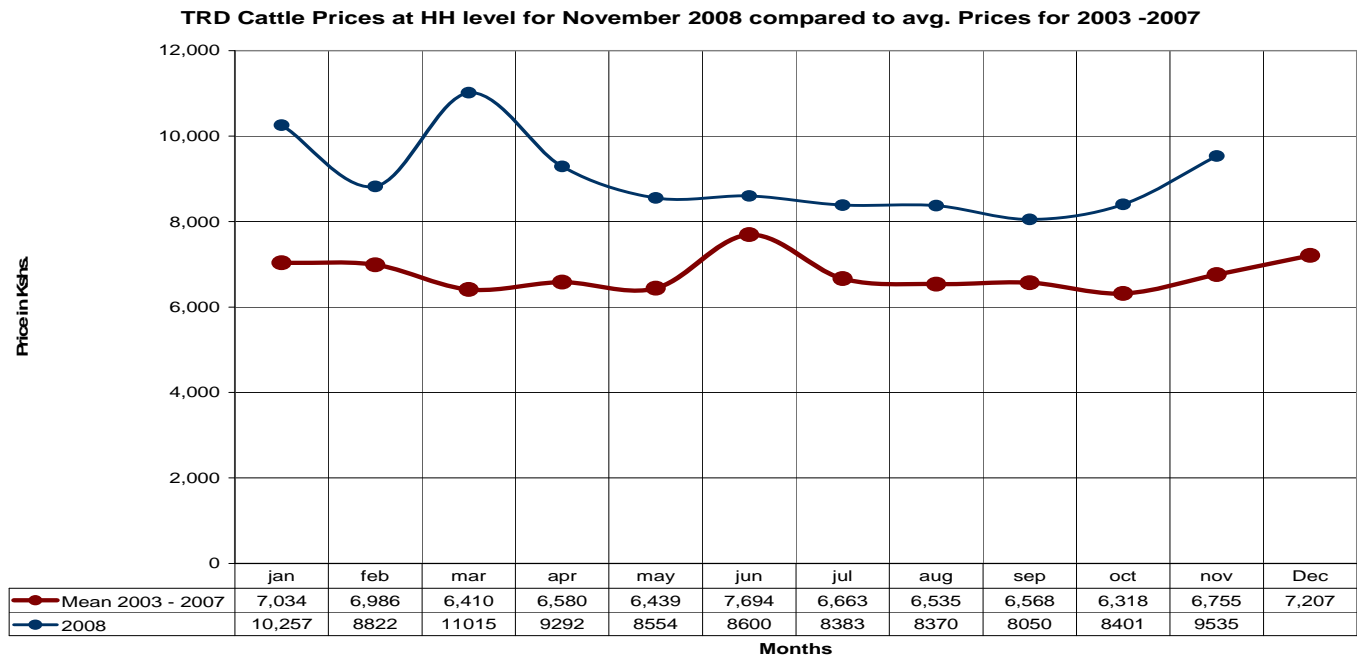
2.3 Implications on food security

- Though sale of mangoes was expected to stabilise the food security, not much improvement was recorded as only a few farmers were selling and the yield and farm gate prices were very low.

3.0 Access to food

3.1 Livestock marketing

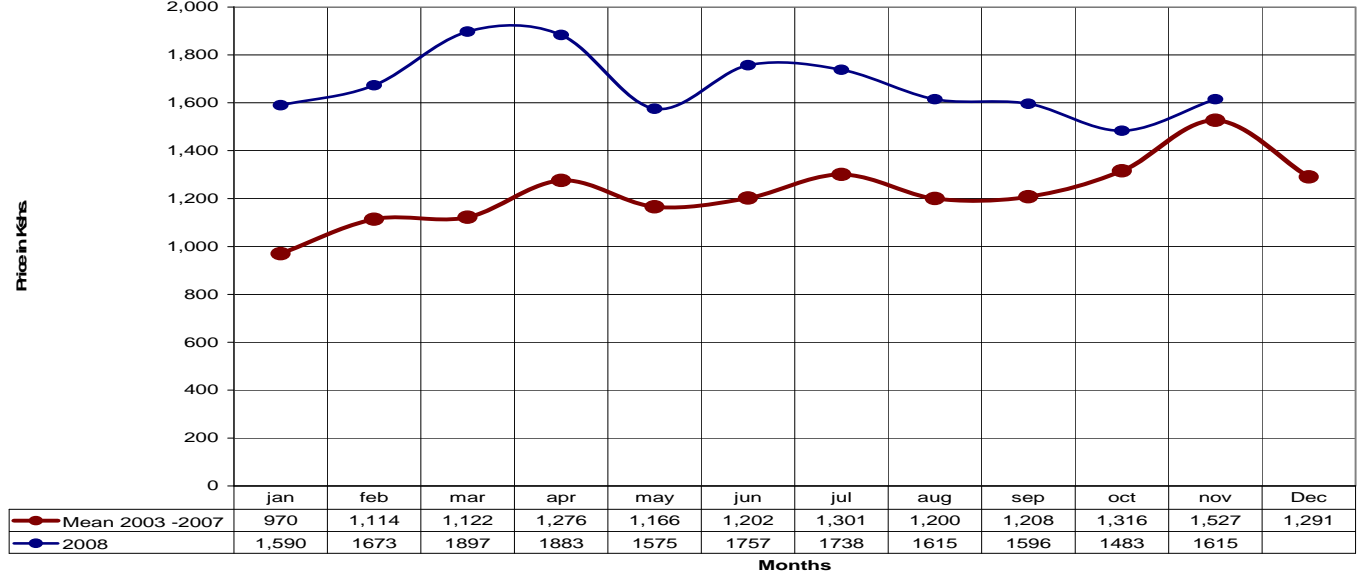
3.1.1 Cattle prices



- During the month the price of cattle rose to Ksh9, 535 from Ksh8, 401 in October.
- The price was above the long term seasonal average price of Ksh6, 755 recorded during the period 2003 -2007.
- Cattle prices were expected to rise at the time of the year due to scarcity of the same in the market as pastoralists withheld their livestock and depended more on livestock products.
- The price could also be due to favourable body conditions.

2.3.2 Goat prices

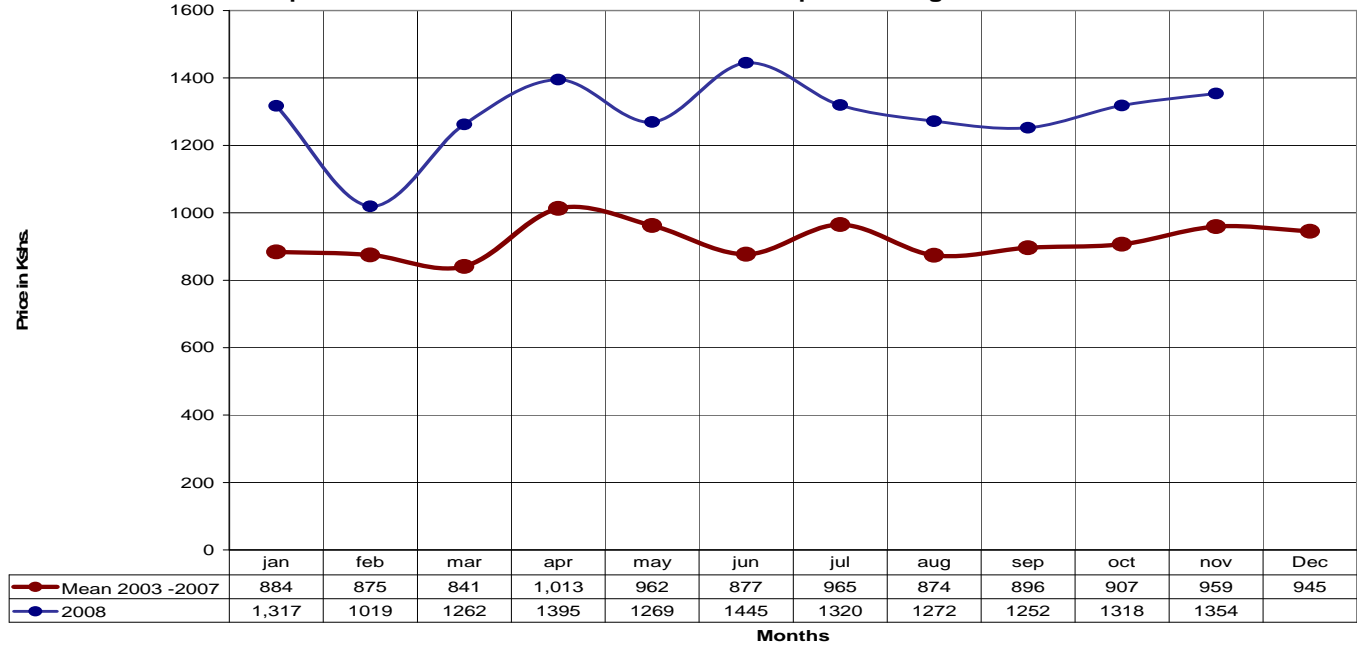
TRD Goats Prices at HH level for November 2008 compared to avg. Prices for 2003 - 2007



- There was a slight rise in the price of goats which was recorded at Ksh1, 615/= from ksh1, 483/= of last reporting period.
- The price was also higher than the long term seasonal average price of Ksh1, 527 recorded during the period 2003 – 2007.
- Rise in prices of goats at the time of the year was an expected situation.

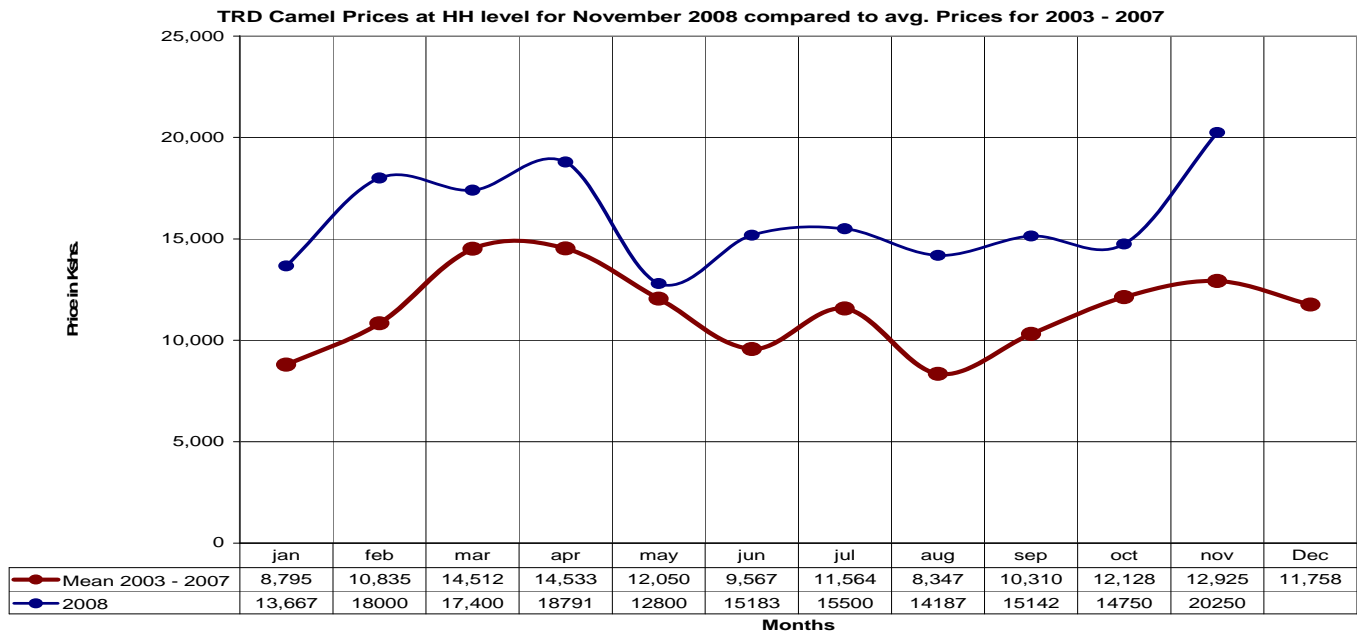
3.1.3 Sheep prices

TRD Sheep Prices at HH level for November 2008 compared to avg. Prices for 2003 - 2007



- During the month the price of sheep rose to Ksh1, 354 compared to ksh.1, 318 of last reporting period.
- The price was also above the seasonal average prices of Ksh959 observed during the period 2003 – 2007.

2.3.4 Camel prices



- Camel also recorded a significant price rise at Ksh20, 250 compared to Ksh14, 750 of last month.
- The camel prices were also much higher than the long term seasonal average price of Ksh12, 925 recorded during the period 2003 – 2007.
- Stable prices were expected at the time of the year due to favourable body and market conditions.

3.2 Livestock sales

- There was a general drop in the sales rate of almost all livestock species.
- This was expected since during such seasons pastoralists tend to withhold livestock and depend more on livestock products.

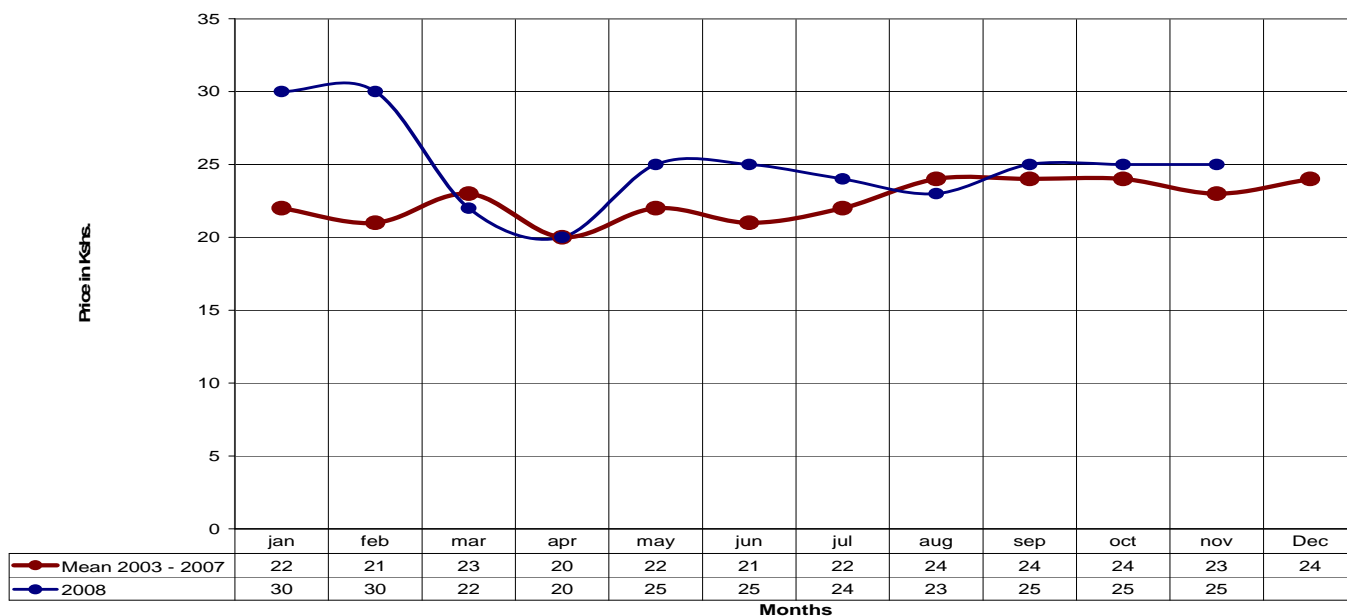
3.3 Milk consumption

- There was a general improvement in the milk consumption patterns at the household level.
- This could be due to increase in milk yield earlier reported.

3.4 Crop prices

3.4.1 Maize prices

TRD Maize Prices at HH level for November 2008 compared to avg. Prices for 2003 - 2007



- No significant change was recorded in the price of maize, with the average price remaining constant at Ksh25.
- The price was higher than the seasonal average price of Ksh.23 recorded during the period 2003 – 2007.
- Prices of maize were expected to rise as maize reserves at the household level continued to deplete and become scarce at the market level.

3.5 Income

3.5.1 Crop income

- There was a slight rise in the percentage of income derived from the sale of crops, which rose to 11% from last months 5%.
- This could be due to sale of mangoes earlier reported.

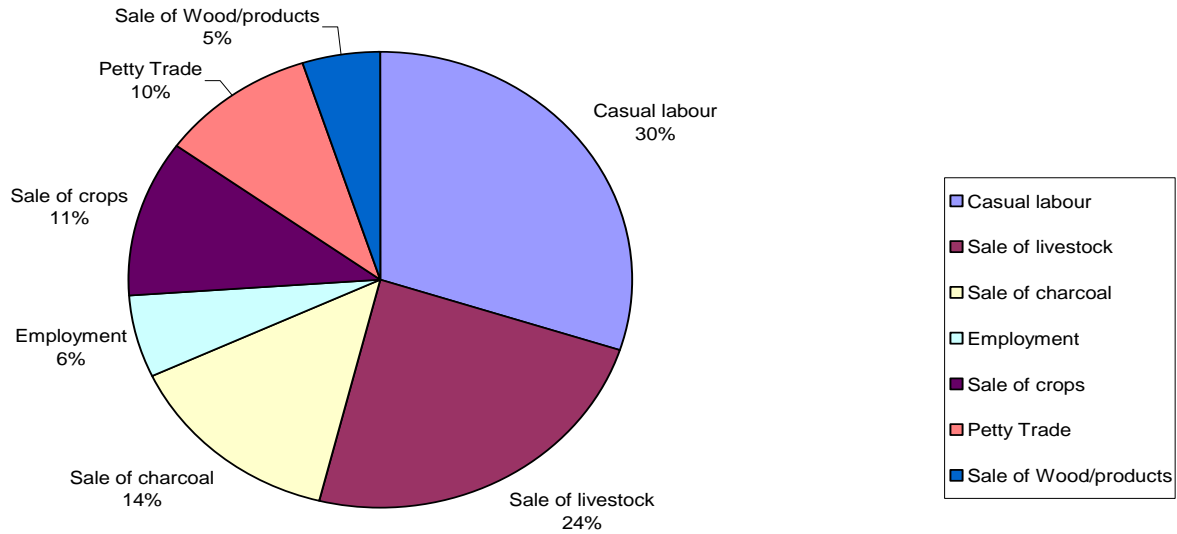
3.5.2 Livestock income

- Income from the sale of livestock and livestock products slightly dropped to 24% compared to 25% reported during the last reporting period.
- This could be due to drop in sales rate of livestock reported during the month.

3.5.3 Other income

- Other sources of income at household level included casual labour 30%, sale of charcoal 14%, petty trade 10% and employment 6%.

TRD Main Income Sources at Household level for the Month of November 2008



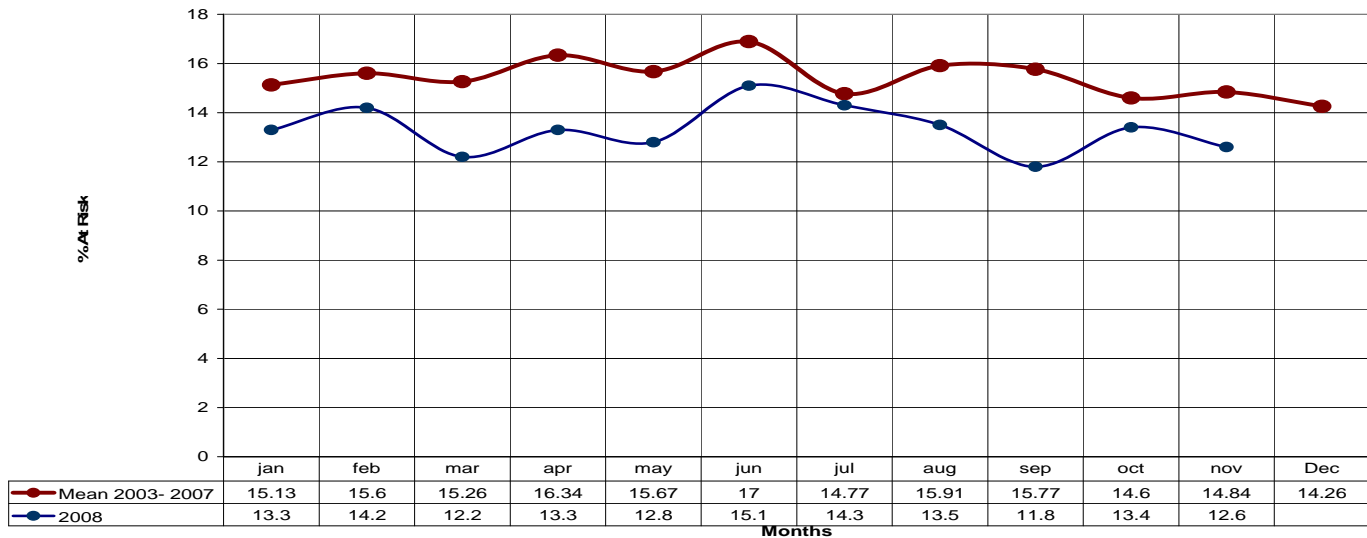
3.6 Implications on food security

- The pastoral food security situation was not encouraging as most of the food availability indicators were still pointing negatively.

4.0 Welfare indicators (utilisation of food)

4.1 Nutrition Status

TRD % of Under-fives Categorized as being At Risk of Malnutrition for November 2008 compared to avg. for 2003 - 2007



- The nutrition status of children below five years continued to improve.
- The percentage of those categorized as being at risk of malnutrition (based on the MUAC <135mm measurement) dropped to 12.6% from 13.4% reported last month.
- The rate was also lower than the long term seasonal mean of 14.84% observed during the period 2003 – 2007.
- Flagged areas included Bura, which recorded a rate of 30.5%, Galole 19.9% and Bangale 19.0%.

4.2 Human health

- No outbreaks reported however Malaria continued to be the main disease reported other diseases include Upper Respiratory Track Infections, diarrhoea, pneumonia mainly reported in under-fives and intestinal worms.

5.0 Current interventions

5.1 Non-food interventions

- Livestock vaccination against PPR.
- Surveillance on Rift Valley Fever.
- Brook Management interventions in the lower parts of Tana Delta where river diversions are rampant.
- Water trucking to the most affected pastoralists dominated hinterland areas (however stopped after the onset of the rains) .
- Health immunization campaigns and outreach programmes.
- Food production by use of water harvesting technology.
- Range rehabilitation and reseedling programmes.
- Livestock breed improvement programmes.

5.2 Food aid

- EMOP to benefit 41, 579 people in Madogo, Bura, Galole and Wenje.
- School-feeding programme in all primary schools.
- Supplementary and therapeutic feeding programmes in hospitals and outreach programmes.
- General food distribution by the GOK to vulnerable families and floods displaced people in Wayu.

5.3 Other Coping Strategies

- Resorting to casual labour.
- Charcoal burning.

- Remittances and gifts from relatives.
- Petty trade.

6.0 Recommendations

- Supplementary and therapeutic feeding programmes to continue and be enhanced in the flagged areas. (*Action: MOH/District Steering Group/Partners/Communities*).
- Enhance disease surveillance and vaccination of livestock in those areas where outbreak of CCPP was reported. (*Action: DVO/District Steering Group/Partners/Communities*).
- As the relationship between the Wardei and Orma communities is still fragile there is need for more peace initiatives to restore harmony and peace so as to curb anticipated conflicts. (*Action: District Security Committee/District Steering Group/Partners/Communities*)