

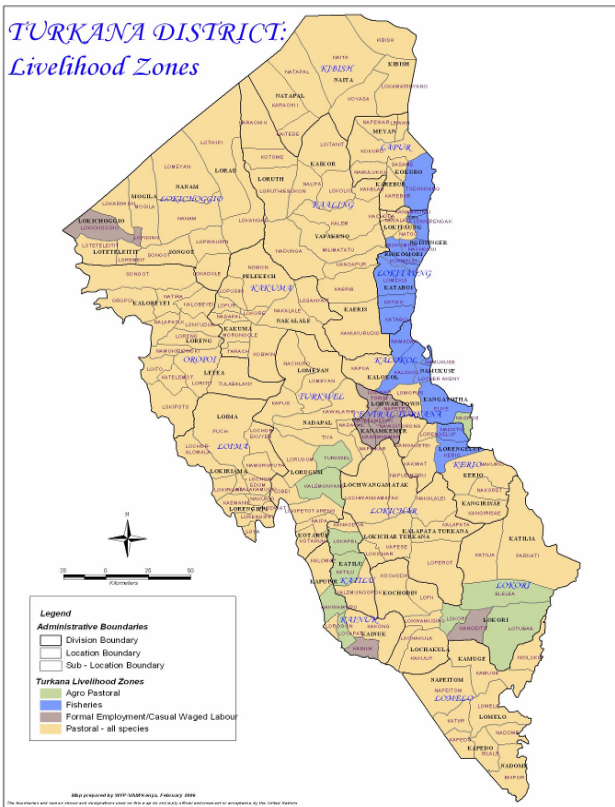


**OFFICE OF THE PRIME MINISTER  
MINISTRY OF STATE FOR THE DEVELOPMENT OF NORTHERN KENYA AND OTHER ARID LANDS  
ARID LANDS RESOURCE MANAGEMENT PROJECT II**

**DROUGHT MONTHLY BULLETIN, NOVEMBER 2008**

**Turkana North, Central And South Districts**

**Warning stages**

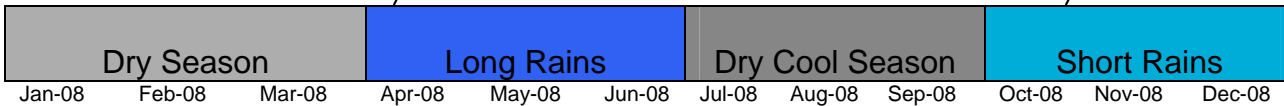


LIVELIHOOD ZONE	WARNING STAGE	TREND
Pastoral-all species	<b>Alarm</b>	Slight improvement
Agro-Pastoral	<b>Alarm</b>	Slight improvement
Fisheries	<b>Alarm</b>	slight Improvement
Formal Employment/Casual Labour	<b>Alarm</b>	Improving
<b>DISTRICT</b>	<b>Alarm</b>	<b>Slight improvement</b>

**SEASONAL CALENDER**

Start of Long rains

Start of Short Rains



- Better quality and quantity of pasture and browse.
- Increased milk production, hence adequate amount of milk available for consumption.

- Rising growth in calving rates, especially, large stock.

### **Situation Overview**

- The Greater Turkana district received a fair amount of rainfall during the month under review. Lodwar meteorological station recorded 31.2mm, which was lower than the 42.2mm recorded in October. This was also higher than the 26.2mm of rainfall recorded for the same period of referenced year (2004).
- The quality and quantity of pasture and browse in wet season grazing areas (the lowland areas of the district) improved slightly.
- The distance to and from water sources decreased from 3.6km in October to 2 km. This was attributed to the grazing areas being nearer to water sources.
- The body condition of most livestock species improved due to improved pasture and browse condition.
- The mortality rate of shoats decreased from 13.6% in October to 12.8%. Similarly, the mortality rates of the large stock (cattle and camels) slightly decreased from 16.2% in October to 6.1% in November.
- The average birth rate for livestock increased from 12.35% in October to 16.8% in November. The birth rates recorded were: 32.1%, 10.9%, 8.8% and 15.4% for cattle, sheep, goats and camels respectively.
- Livestock sales rate of small stock decreased from 2.22% in October to 1.5% in November.
- The household milk production across the three districts increased from 12.54% in October to 18.1% in November.
- The nutrition status of children below five years improved slightly during the month. The number of children rated as being at the risk of malnutrition dropped from 27.1% in October to 21.4%. This was 12.1% above the WHO threshold and an indication of a worsening trend, situating the district at **Alert** phase.
- Most health centres recorded cases of malaria and upper respiratory tract infections (URTI). Some cases of other diseases such as eye infections were reported in most parts of Turkana.
- Cases of conflict were reported in all the cross border zones of Turkana North, Central and South districts.

### **Recommendations to DSG and KFSSG**

- Measures to be put in place to reduce the worsening levels of malnutrition in vulnerable groups such as children under five years, pregnant and lactating mothers, the sick and the elderly.
- Local farmers should be supported with tools, equipment and inputs.
- Continued PPR vaccination campaigns and other supportive treatments like CCPV vaccination, deworming and treatment of mange and camel trypanosomiasis.
- Conflict early warning and rapid response should be strengthened.
- Cross-border peace meetings and community dialogue in areas affected by insecurity.

- Recruiting more Kenya Police Reservists (KPR) in all the areas affected by insecurity and supplying them with enough ammunition to lend hand to the government security agencies in place.
- The food for assets (FFA) and cash for work (CFW) programs should be up-scaled to take care of those left out of the targeting, so as to build their assets and resilience to drought.
- Provision of fishing gears to the fisher folk communities along Lake Turkana.
- Immediate resettlement of internally displaced persons and subsequent closure of the camps within Turkana.
- Introduce solar dryers and cages to reduce the massive post harvest losses in the fisheries sector.

### **Current interventions**

#### **Non-food interventions**

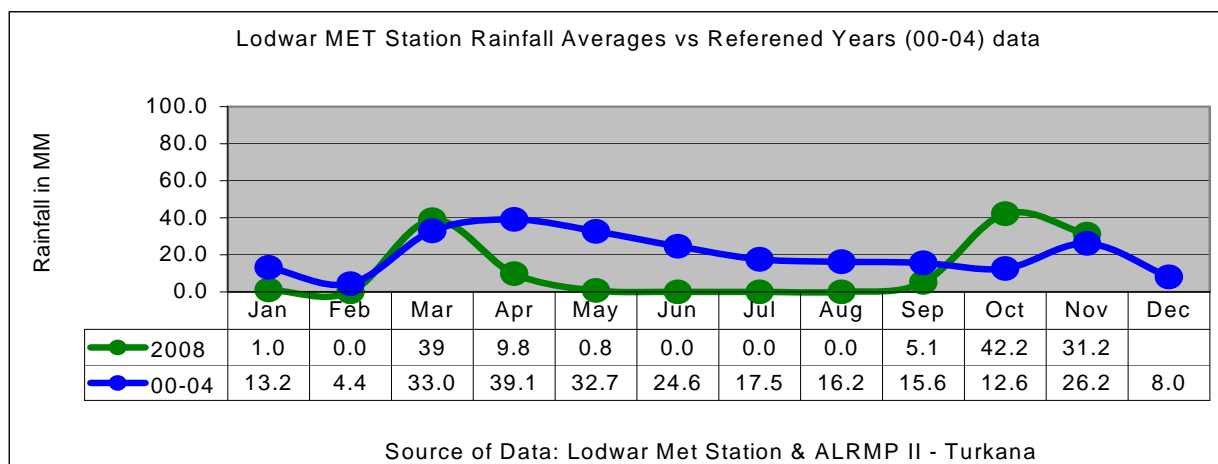
- Njaa Marufuku Kenya project and National Agriculture and livestock extension programme (NALEP) by Ministry of Agriculture and Livestock.
- Water resources development by Practical Action; ALRMP, OXFAM-GB and Diocese of Lodwar.
- Capacity building on public health and hygiene by UNICEF in partnership with MoH.
- Conflict resolution and peace-building initiatives by different stakeholders.
- PPR vaccination.

#### **Food aid**

- General food distribution.
- Supplementary feeding.
- Food for assets.

## **1.0 Environmental indicators (Stability)**

### **1.1 Rainfall**



- The district recorded an average of 31.2mm of rainfall compared to 42.2mm recorded in October.
- The rainfall was fair and higher than the 26.2mm long term mean for the year 2000-2004.

## 1.2 Condition of natural vegetation and pasture

- Availability of pasture and browse in wet season grazing areas improved compared to the previous month.
- The quality and quantity of pasture and browse in the lowland areas of Turkana improved slightly.

## 1.3 Water Sources and Availability

### 1.3.1 Use of water sources

- Surface water sources increased in most parts of the Greater Turkana, while underground water sources yielded high amounts of water for both human and livestock consumption.
- Turkwel and Kerio seasonal rivers discharged moderate amounts of water during the month.

### 1.3.2 Access to water

- The average walking distance to and from water sources dropped significantly from 3.6km in October to 2 km.

## 1.4 Emerging issues

### 1.4.1 Insecurity/conflicts/human displacement

- Cases of insecurity were still widely reported, especially conflicts between the Turkana and their neighbours.
- The most serious attack took place in Lorengippi Location of Loima division between the Pokot, Turkana and Tepes of Uganda.

- The other affected areas were: Kaitede and Lopet in Natapar Location in Kibish division; Nayanae-epuul and Olegesh in Lapur division (Turkana-Nyangatom); and Lomeyan/Timu areas of Lokichoggio (between Toposa of Sudan and the Turkana) in Turkana North district; Kotaruk location (Turkana/North Pokot zone) in Turkana central and lastly, Katilu, Kainuk and Lomelo divisions (Turkana south/west/east Pokot zone) in Turkana south.
- The increase was attributed to inadequacy of natural resources.

### **1.4.3 Migration**

- Most pastoral herders moved back to their normal rangelands.
- Internally displaced persons as a result of the post-election violence at the beginning of the year were still camped in the district. Their population stands at ten thousand (10,000).

### **1.5 Implications on food security**

- The inward and outward migrations have a negative effect on household food security.

## **2.0 Rural economy indicators (Food Availability)**

### **2.1 Livestock production**

#### **2.1.1 Livestock body condition**

- Livestock body conditions improved for all species. Shoats were reported to be healthy due to availability of pasture and water.
- Mortality rate of shoats decreased slightly from 13.6% in October to 12.8%. The mortality rates of large stocks (cattle and camels) decreased from 16.2% in October to 6.1% in November.
- The main cause of death in shoats was PPR and drought. However, CCPP (goats), CBPP (cattle), mange (camels), diarrhoea and internal parasites (worms) also contributed to livestock deaths.
- Livestock birth rates increased significantly from, 12.35% in October to 16.8% in November. The specific birth rates recorded for each of the species were: 32.1%, 10.9%, 8.8% and 15.4% for cattle, sheep, goats and camels respectively.

#### **2.1.2 Livestock health**

- 2.1.3** The common diseases affecting livestock in the district were: Contagious Caprine Pleural Pneumonia (CCPP) and *Peste des Petits Ruminants* (PPR) in shoats; Contagious Bovine Pleural Pneumonia (CBPP) in cattle, mange in Camels, leptospirosis, ticks and lice. During the month under review, some cases of these diseases were reported in certain areas.
- The PPR menace exacerbated the food security situation in the district because it decimated shoats significantly.

### 2.1.3 Milk production

- Milk production increased at household level from 12.54% in October to 18.1% in November.
- This was attributed to the increase in livestock birth rates.

## 2.2 Crop production

### 2.2.1 Timeliness and status of various crop production activities

- Few farmers along the riverine areas of Turkwel and Kerio planted some crops. However, some had not prepared their farms due to lack of seeds and farm tools/inputs.

### 2.2.2 Harvest

- There were no crop harvests due to crop failure in the last season.

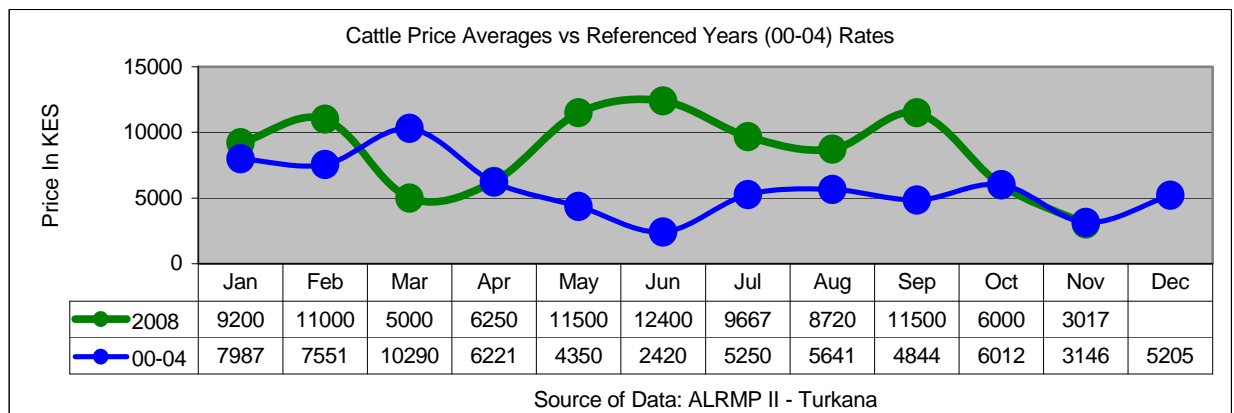
### 2.2.3 Implications on food security

- The food security situation has not changed due to the above situation.

## 3.0 Access to food

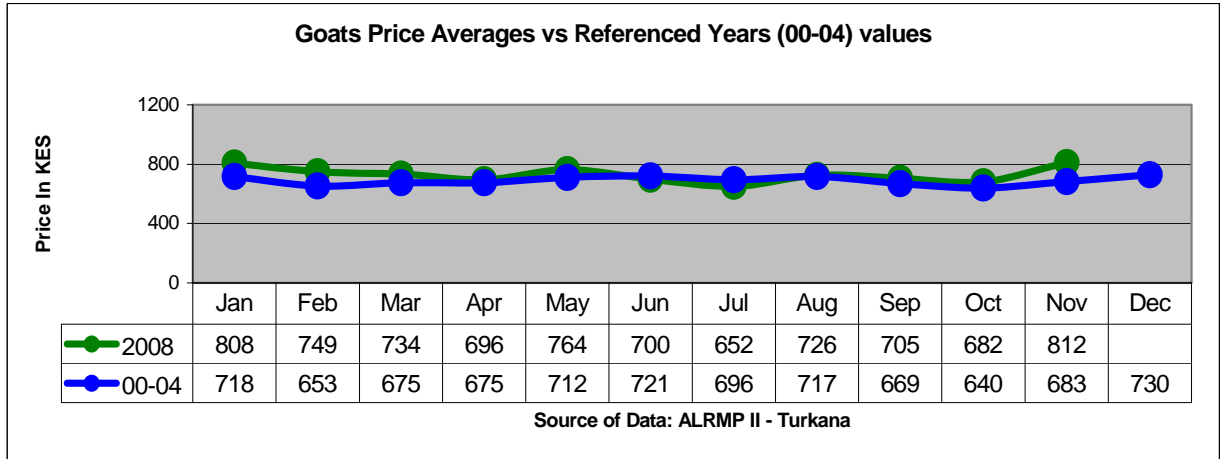
### 3.1 Livestock marketing

#### 3.1.1 Cattle prices



- The average cattle price dropped drastically during the month.
- The price stood at Ksh3, 017 from Ksh 6,000 in October. (This was the price of calves (not bulls), which were the predominant livestock offered for sale during the month.)
- Relative to reference year (2004), the price was much lower than the Ksh3,146 recorded in the same period of the reference (2004).

#### 3.1.2 Goat prices

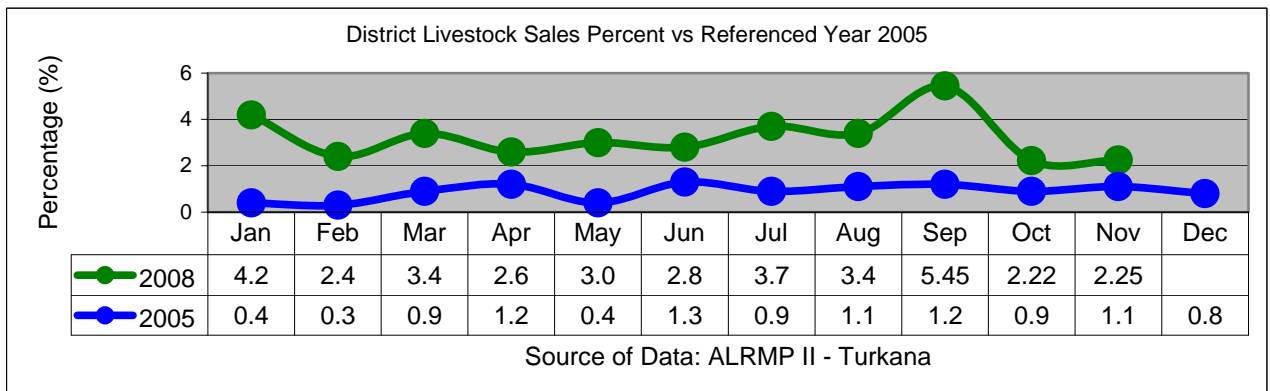


- The average goat price increased from Ksh682 in October to Ksh812.
- The price was higher than the reference year's value of Ksh.683.

### 3.1.3 Sheep prices

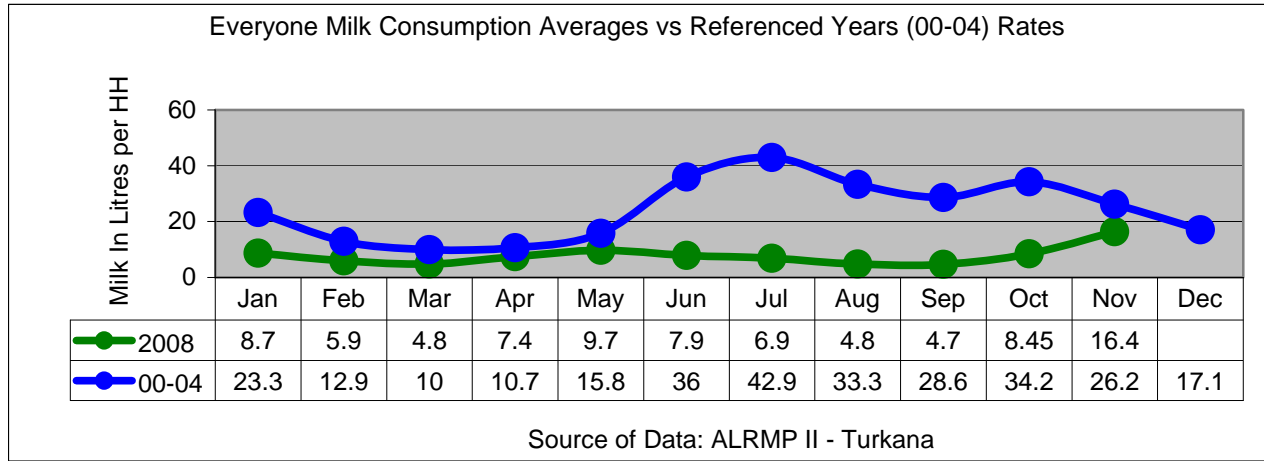
- The price of sheep increased by Ksh190 during the month from Ksh675 in October to Ksh865.

### 3.2 Livestock sale



- The district saw a slight increase in livestock sales, from 2.22% recorded in October to 2.25% in November.
- This was higher compared to 1.1% recorded in the same period of the reference year (2005).

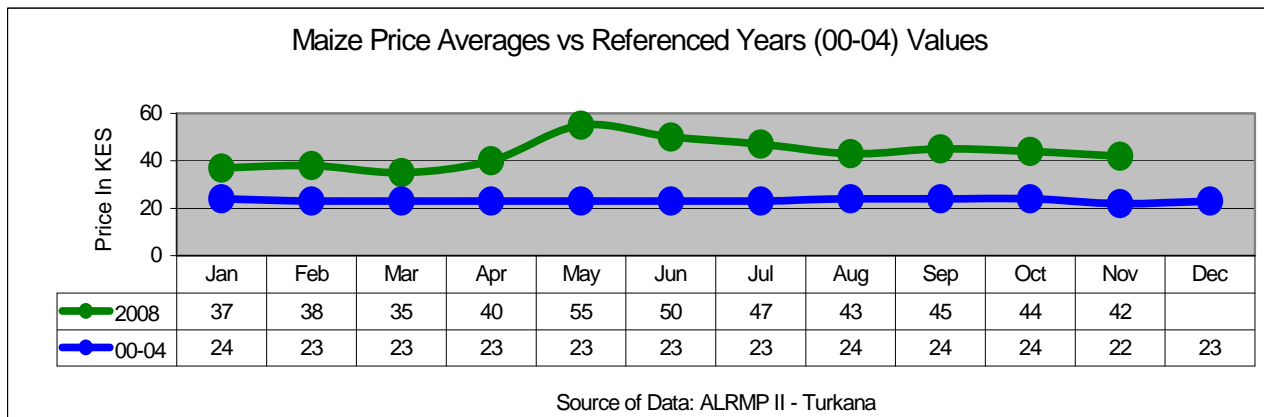
### 3.3 Milk consumption



- Milk consumption rate increased by 7.95% during the month under review.
- Average consumption was 16.4% compared to 8.45% recorded in October. This was 9.8% lower than the 26.2% recorded in the same period of the reference year (2004).

### 3.4 Crop prices

#### 3.4.1 Maize price



- Maize prices fell slightly during the month from Ksh 44 per kilo in October to Ksh 42.
- This was much higher compared to Ksh22 recorded during the same period of the referenced year (00-04).

#### 3.4.2 Posho (maize meal) price

- The average posho price was Ksh44 per kilogram.
- This price was relatively higher compared to same referenced year (2004) value of Ksh22.

### 3.5.0 Income

### 3.5.1 Livestock sales rate

- The livestock sales rate of the small stock increased marginally from 1.45% in October to 1.5%.

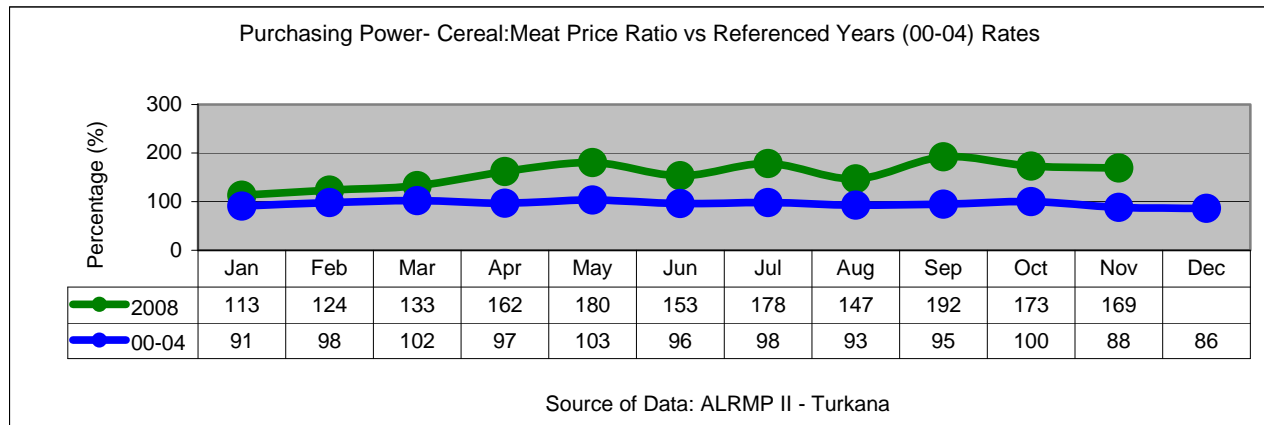
### 3.5.2 Crop income

- Agricultural crop production was below normal due to the failure by most farmers to plant.

### 3.5.3 Other income (Trade, Wages, etc.)

- The percentage of people employed in November increased from 9.3% in October to 28.2%.
- In November'08, the population engaged in small-scale trading in most urban and peri-urban centres increased to 41.0% from a value of 11.0% recorded in October.
- During the month (November), the rate of casual work wages increased from Ksh97 recorded in October to Ksh129.

### 3.6 Terms of trade (Cereal: Meat Price Ratio)



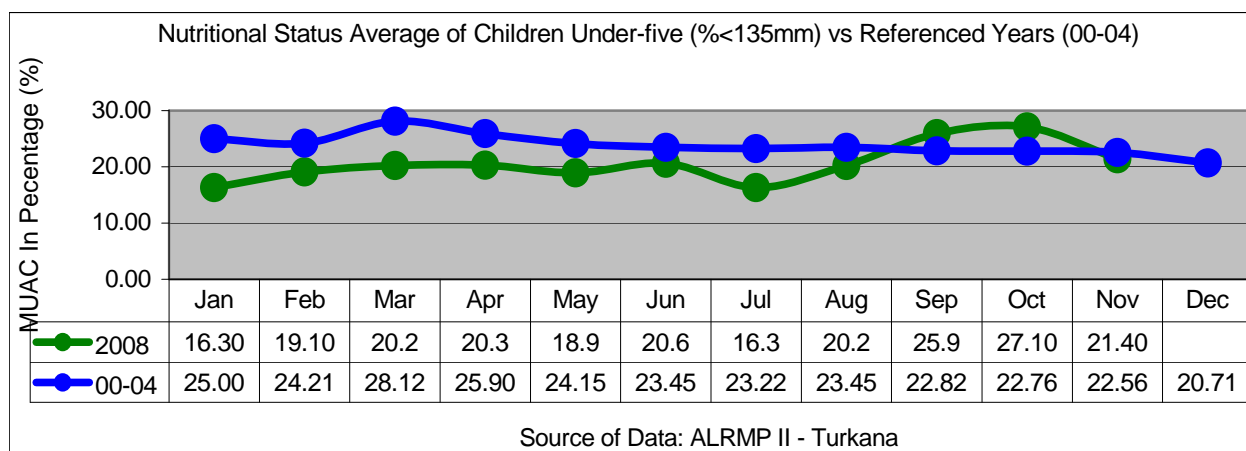
- The district cereal: meat price ratio for November was 169%, which was an improvement compared to October. The Cereal: Meat price ratio was still higher compared to the referenced year (2004) percentage of 100%.
- The value of Cereal: Meat price ratio was indicative of the fact that terms of trade were not only worse, but still extremely adverse for the herders.

### 3.7 Implications on food security

- The increase in cereal prices impacted negatively on food security situation in the three districts of Greater Turkana. It will also affect livestock off-take (Destocking).
- In regards to the coping strategies index (0 to 10), the month recorded a value of 2.2% compared to 1.8% reported in October.

## 4.0 Welfare indicators (Utilisation of food)

### 4.1 Nutritional status



- The nutrition status of children below five years improved slightly during the month.
- The number of children rated as being at the risk of malnutrition dropped from 27.1% in October to 21.4%. This was 12.1% above the WHO threshold and an indication of a worsening trend, situating the district at **Alert** phase.
- The status was better compared to the same period of the referenced year (2004).

### 4.2 Health

- The human health conditions in Turkana North, Central, and South districts were still unstable.
- Cases of malaria were reported across the three districts, while measles and cholera outbreak were reported in Kotaruk Location (Naremit sample area) of Turkwel division.
- There were also many cases of Upper Respiratory Tract Infections (URTI), diarrhoeal diseases, internal parasites (worm infestation), typhoid, measles, mumps, skin diseases (body rashes) and eye infections outbreak reported in various parts of the three districts.
- Poor sanitation was still a major problem in all three districts, especially in centres and the settlements along River Turkwell and Lake Turkana. The problem was compounded by lack of public toilets in the communities and pit latrines in schools found in those areas.
- Inaccessibility of safe drinking water was a major challenge because many people still rely on water from riverbeds, hence outbreaks of water borne diseases in Turkana.

## 5.0 Current interventions

### 5.1 Non-food interventions

- Njaa Marufuku Kenya project and National Agriculture and livestock extension programme (NALEP) by Ministry of Agriculture and Livestock.
- Water resources development by Practical Action; ALRMP, OXFAM-GB and Diocese of Lodwar.
- Capacity building on public health and hygiene by UNICEF in partnership with MoH.
- Conflict resolution and peace-building initiatives by different stakeholders.
- PPR vaccination.

## **5.2 Food aid**

- General food distribution by WFP through the lead agencies (Oxfam GB & World Vision-Kenya).
- Supplementary feeding for the severely malnourished under-fives, pregnant and lactating mothers, aged and disabled groups (Merlin, etc).
- Food for Assets supported by WFP and ALRMP II through TRP for the host communities in Kakuma, Oropoi and Lokichoggio divisions.

## **5.3 Coping strategies**

During the month under review, most households' coping strategies and mechanisms were:

- Reduction in the number of meals per day.
- Consumption of wild foods (fruits and meat) and taboo foods.
- Petty trade was mainly done in urban and peri-urban centres such as Lokitaung, Kaaleng, Kakuma and Lokichoggio Kalokol, Kainuk, Lokichar. The commodities sold included fish (dry and fresh), wood products (firewood), handicrafts and livestock products.
- Charcoal burning and selling.

## **6.0 Recommendations**

- Measures to be put in place to reduce the rising levels of malnutrition in vulnerable groups such as children under five years, pregnant and lactating mothers, the sick and the elderly.
- Local farmers should be supported with tools, equipment and inputs.
- Continued PPR vaccination campaigns and other supportive treatments like CCPP vaccination, deworming and treatment of mange and camel trypanosomiasis.
- Conflict early warning and rapid response should be strengthened.
- Cross-border peace meetings and community dialogue in areas affected by insecurity.
- Recruiting more Kenya Police Reservists (KPR) in all the areas affected by insecurity and supplying them with enough ammunition to lend hand to the government security agencies in place.
- The food for assets (FFA) and cash for work (CFW) programs should be up-scaled to take care of those left out of the targeting, so as to build their assets and resilience to drought.

- Provision of fishing gear to the fisher folk communities along Lake Turkana.
- Immediate resettlement of internally displaced persons and subsequent closure of the camps within Turkana.
- Introduce solar dryers and cages to reduce the massive post harvest losses in the fisheries sector.
- There is need to support recovery interventions to enable communities rejuvenate assets which were lost during the drought period.
- Government and the partners to consider de-stocking (off-take) to salvage livestock from drought stressed areas especially in Central District and some parts of Lokichar division in the South.
- Provision of essential drugs in rural health facilities and enhanced healthcare within pastoral/rural areas, with key emphasis on HIV/AIDS affected population.
- Reseeding of pastoral rangelands needs to be done across the entire district.