

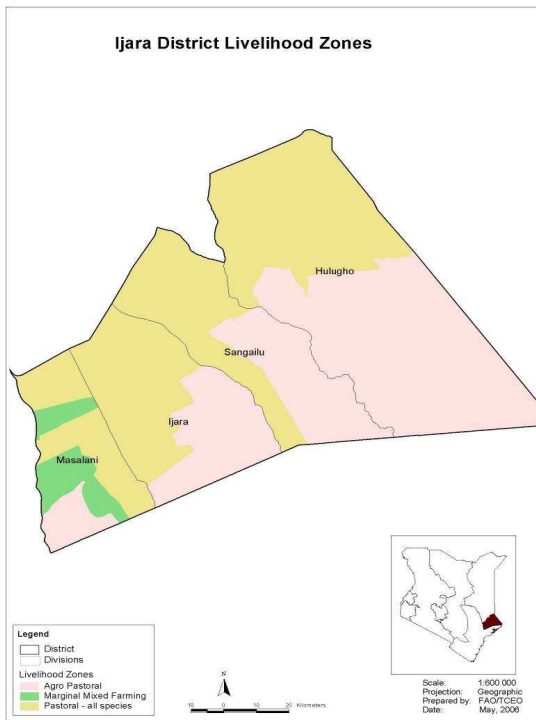


**OFFICE OF THE PRIME MINISTER  
MINISTRY OF STATE FOR THE DEVELOPMENT OF NORTHERN KENYA AND OTHER ARID LANDS  
ARID LANDS RESOURCE MANAGEMENT PROJECT II**

**DROUGHT MONTHLY BULLETIN, OCTOBER 2008**

**Ijara District**

**Warning Stages**



Livelihood Zone	Stage	Trend
Pastoral	Alarm	Worsening
Agro pastoral	Alert	Worsening
Formal employment/ Casual labor	Alarm	Worsening

**Seasonal Calendar**

**Situation overview**

-Milk yields drop -Livestock moves towards dry season grazing zones	-High milk yields -Livestock moves to the traditional wet grazing areas. -High calving, kidding and lambing rates.	-Low milk availability -Livestock moves towards the fall back dry seasons grazing areas (Boni forest) -Wildlife-human conflicts	-High milk yield -Livestock moves towards traditional wet seasons grazing areas -High mating rates								
<b>Short Dry Spell</b>			<b>Long rains</b>			<b>Long dry spell</b>			<b>Short rains</b>		
Jan	Feb	Mar	Apr	May	Jun	Jul	Aug	Sept	Oct	Nov	Dec

- No rainfall was recorded in the district during the month under review and dry and hot weather conditions prevailed.
- Browse and pasture quality and quantity deteriorated due to adverse effects of prevailing high temperatures.
- The harsh conditions led to increased number of pastoralists migrating and retaining their satellite herds in the Boni forest and Tana Delta areas, which had abundant pasture and water.
- Most water pans dried up and only a few of the large water pans located at Hulugho, Sangailu and Ijara centres held water. However, the volume was diminishing day by day due to consumption and high rates of evaporation. The district was expected to exhaust all water sources, except River Tana, if the dry spell persists and the short rains do not fall in the next two weeks.
- Acute water stress was reported in pastoralist livelihood zones of Warsame, Handaro, Abdigure, Dololo, Shabelle, Alihaithar, Sagar and Gababa which were being served with water through trucking.
- The average livestock prices dropped for all species all livelihood zones.
- Livestock body condition and health was rated fair for cattle but remained poor for shoats in all livelihood zones. However, the body condition of all livestock was expected to decline in the coming weeks due to increased distances to grazing areas.
- There was no inward migration of livestock in the district during the month. However, outward migration to Tana River District and Lamu increased, with satellite herds still camped at Witu, Boni forest and Tana Delta.
- Household access to water declined slightly, with trekking distance rising to 10km from 8km in September, while livestock trekking distance to access to water averaged 10-24km.
- PPR and CCPP continued to affect shoats, while cases of CBPP in cattle were reported in agro-pastoralist zones, especially in Hulugho, Sangailu, Kotare, Bodhai Jalish and Bulto Hama.
- Availability of milk diminished in all the livelihood zones due to migration of milking herds to dry grazing areas in Boni forest and riverine in search of pasture and water.
- The nutritional status of children below five years deteriorated, with percentage of those rated as being at risk of malnutrition (based on the MUAC measurement) rising to 17 from 15 in September. This was attributed to a decrease in milk yields and minor ailments resulting from malaria and respiratory tract infections.
- A precarious food security scenario had already started emerging in some parts of district and may spread to the entire area within a short time. The drought situation in the entire district was at alarm stage and worsening.

### **Current interventions**

#### **Non- food interventions**

- Construction of water harvesting structures for crop production by Ministry of Agriculture.
- Removal of water hyacinth from pans in Hulugho by water dept/ALRMP.
- Distribution of seeds to farmers by Ministry of Agriculture.

- Conducting of mobile outreach clinics by MOH/ALRMP.
- Distribution of Unimix and Vitamin A supplementation by MOH/UNICEF.
- Vaccination against CBPP and PPR. Already 9,600 cases of CBPP and 9,000 of PPR have been vaccinated.
- Establishment of tree nurseries—a total of 15,000 seedlings are in nurseries.
- Water pan protection measure- ALRMP, Ministry of Water, Global Concern Fund.
- Cash for work.

## **5.2. Food aid**

- Relief food provided to vulnerable households.

## **Recommendations to DSG and KFSSG**

- Sensitize the community on nutritional and commercial value of fish.
- Strengthen outreach clinics and organise medical camps with other actors.
- Measures to curb wildlife should be strengthened by Kenya Wildlife Service.
- PPR and CCPP vaccination campaigns to continue across the district.
- Provision of safe drinking water to prevent outbreaks of communicable disease.
- Continue to encourage and support crop farming in the agro-pastoralist zones to enhance food security in the district through programmes such as Njaa Marafuku, provision of seeds and other inputs.
- Reducing levels of malnutrition in pregnant and lactating women and children under five years through provision of supplementary food, medical and awareness programmes.
- Continue to encourage construction of pit latrines/toilets in settlements and schools and provision of safe drinking water to prevent outbreaks diarrhoeal diseases.
- Strengthen measures to combat malaria and improve sanitation.
- Resolve impending conflict over access to River Tana by pastoralists from Ijara.
- Increase and enhance water trucking to urban areas and institutions such as schools, dispensaries and security posts that lie in areas hit hard by water scarcity.
- Departmental heads to continue being mainstreamed in disaster risks reduction measures and planning of district development activities as agreed in the Malindi Workshop in April.
- Continue and strengthen extension services through NALEP.
- Continuing livestock vaccination/treatment effort should be coupled with effective disease surveillance by the veterinary department.

## **1.0 Environmental indicators (stability)**

### **1.1 Rainfall**

- No rainfall was received in any of the livelihood zones in the entire district.
- Environmental condition continued to deteriorate in all the livelihood zones throughout the month.

### **1.2 Condition of natural vegetation and pasture**

- The status of vegetation, including browse and pasture, deteriorated in both quality and quantity and the coverage was below average.
- Dry browse and scarce grass were available to livestock but at far trekking distance from water source.
- Diminishing levels of pasture and browse caused shortage of milk in pastoralist livelihood zones of Sangailu, Ijara and formal employment/casual livelihood zones of masalani peri-urban and Abalatiro.
- The observed trend was not normal at the time of year and season since browse and pasture are supposed to be abundant.

### **1.3 Water sources and availability**

#### **1.3.1 Use of water sources**

- Most of the large water pans dried up, leaving only a few with diminishing volume of water to sustain pastoralists for less than a week.
- Severe water stress was reported in the pastoral livelihood zones of Handaro, Dololo, Abdigure, Sagar Shabelle and Warsame, which were under water trucking.
- River Tana remained the undisputed source of water for the district headquarters' residents at Masalani.
- It was not normal to experience water stress at the time of the year since natural ponds, lagas, medium and large water pans are supposed to contain substantial volumes of water.
- However, the poor quality of water in most parts of the district was a of concern.

#### **1.3.2 Average distance (Kms) to water sources**

- The average distance to water sources from grazing areas and domestic households was recorded at 15km compared to last month's 8km.
- The trend was not normal for the season as the average distance increased because of the progressing dry weather.
- However, this had a negative impact on food security since the distance had an adverse implication on other social-economic activities.

### **1.4 Emerging issues**

#### **1.4.1 Conflicts/ insecurity/human displacement**

- Increased human/wildlife conflict continued to be observed, with communities suspecting that swelling numbers of wildlife was as a result of displacement from Somalia and encroachment on wildlife habitats and migration routes by increasing human activities in the area.

#### **1.4.2**

- Most of the livestock moved to dry season grazing areas inside the Boni forest and parts of Lamu district, notably, around Witu division, and Tana River.

### **1.5 Implication on food security**

- The above conditions were expected to negatively affect food security situation in the district.

## **2.0. Rural economy indicators (Food availability)**

### **2.1 Livestock production**

#### **2.1.1 Livestock body condition**

- The livestock body condition and health status was poor in all livelihood zones for all categories.
- The decline was due to insufficient pasture and browse occasioned by the prolonged drought.
- Livestock diseases also contributed to the poor body conditions. An outbreak of CBPP was reported in Sangailu sentinel site and cases of PPR in pastoral livelihood zone.
- The trend was not normal compared with same period of previous years.
- The trend had a negative effect on household food security.

#### **2.1.2 Livestock diseases**

- The prevalent livestock diseases were LSD, CBPP, Trypanosomiasis and black quarter anthrax in cattle, Helminthiasis, sheep introtoxicimea and pulpy kidney disease in sheep and CCPP, Helminthiasis and Trips in goats.
- Tsetse fly infestation remained a bottleneck to pastoralists because of the economic implication since the drugs for treatment and veterinary services were exorbitant.

#### **2.1.3 Milk production**

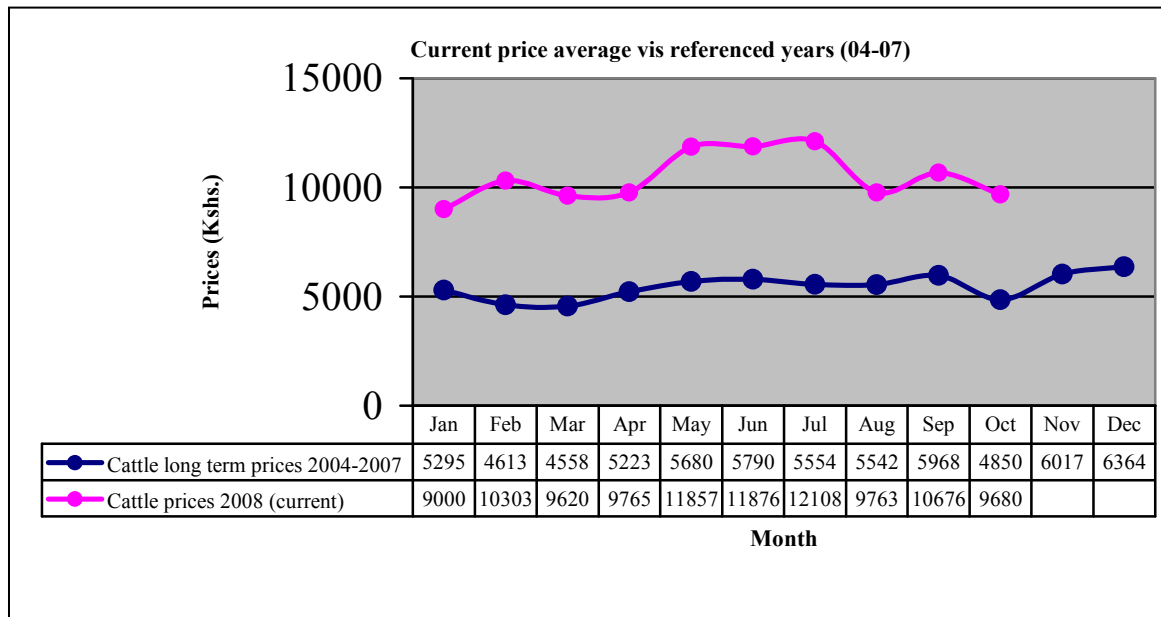
- Milk yield decreased in all the livelihood zones in comparison with the preceding month.
- This was attributed to the hot dry spell.
- The reduced milk production affected the household food security since the pastoralists mostly depend on milk.

## **3.0 Access to food**

### **3.1. Livestock marketing**

### 3.1.1 Cattle prices

The graph below indicates cattle long term mean prices against current year 2008 prices

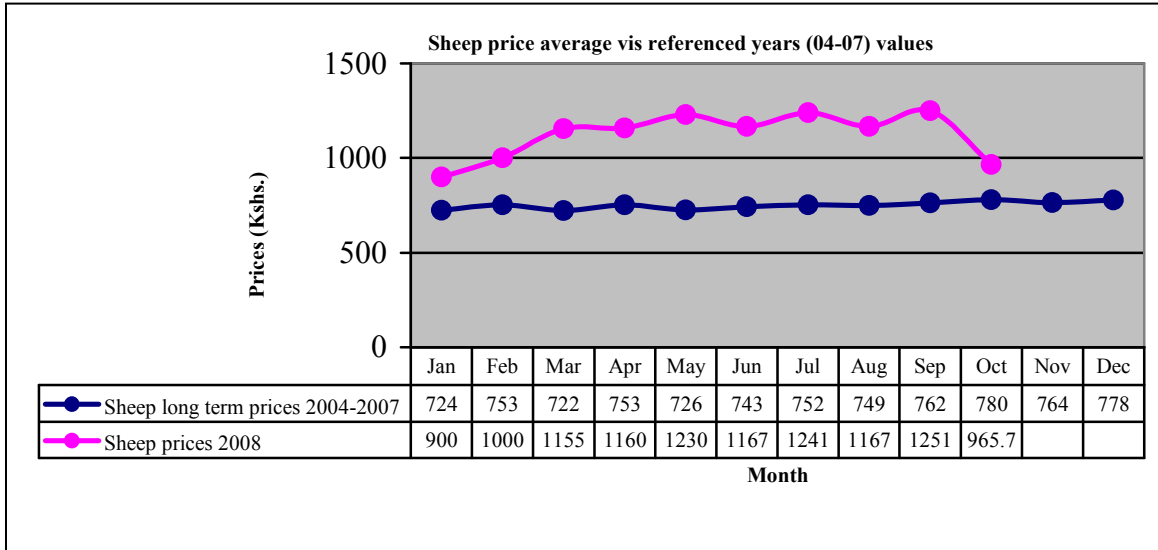


- Cattle prices decreased from Ksh10,676 in September to Ksh 9,680.
- However, the trend was not normal for the time of the year and had negative effect on food security.
- The agro-pastoral and formal/casual employment livelihood zones recorded the highest cattle prices at Ksh12,000 and Ksh12,500 respectively.

### 3.1.2 Goat prices

- Average goat prices dropped from Ksh1,735 in September to Ksh1,520.
- The lower prices may be attributed to reduced body condition due to the prolonged dry spell and lack of proper market in the district.
- The trend was not normal as prices were expected to be higher.

### 3.1.3 Sheep prices



- The prices of sheep decreased from Ksh1,251 in September to Ksh965.7.
- However, the price was above the long term mean.
- The decline may be attributed to lack of markets in the entire district.
- The decrease was due to the dry spell, which impacted negatively on the body condition.
- The trend was not normal as the prices were expected to be higher.
- The pastoral and agro-pastoral livelihood zones had the highest prices recorded at Ksh1,800 and Ksh1,600 respectively.

### 3.2 Livestock sales

- Livestock sales decreased for all categories compared to the last reporting period.
- This was not normal trend and had a negative impact on household food security.

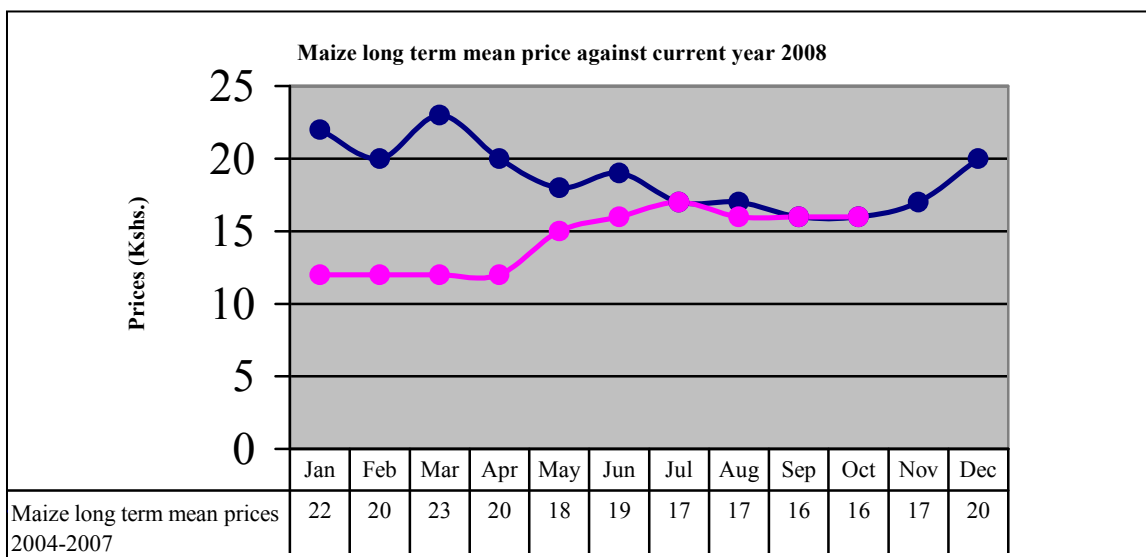
### 3.3 Milk consumption

- The availability of milk for consumption in all the sentinel sites declined because of the effects of the dry spell and prevailing diseases.
- This had a negative impact on household food security since only 7 per cent of children under five could access milk.

### 3.4 Crop prices

- Food prices remained stable during the month under review and prices levels recorded were almost same as previous month.

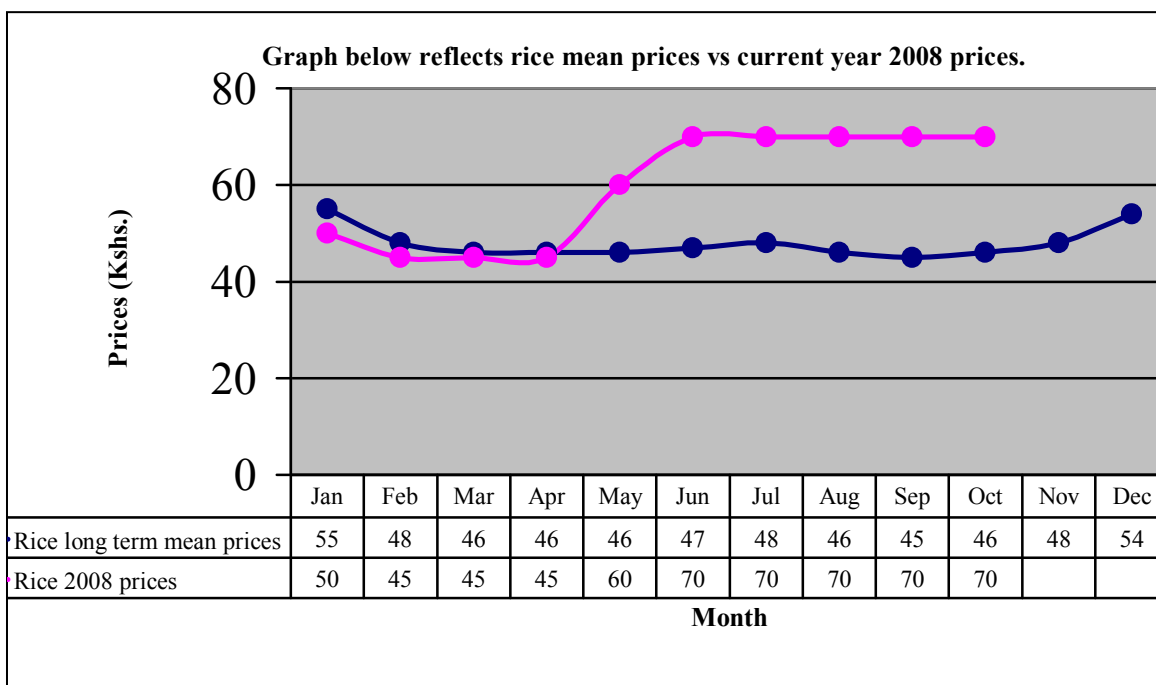
#### 3.4.1 Maize prices



- The average price of maize stabilised at Ksh 16 per kilo in all the sentinel sites zones compared with preceding month.
- This may be attributed to the last harvest in Bothay, Tana basin, Kotiley and Hulugho, coupled with distribution of GOK relief food to vulnerable households.
- The trend was not normal for the time of the time of year as the prices were expected to drop further.
- The observed trend had a positive impact on food security.

### 3.4.3 Rice prices

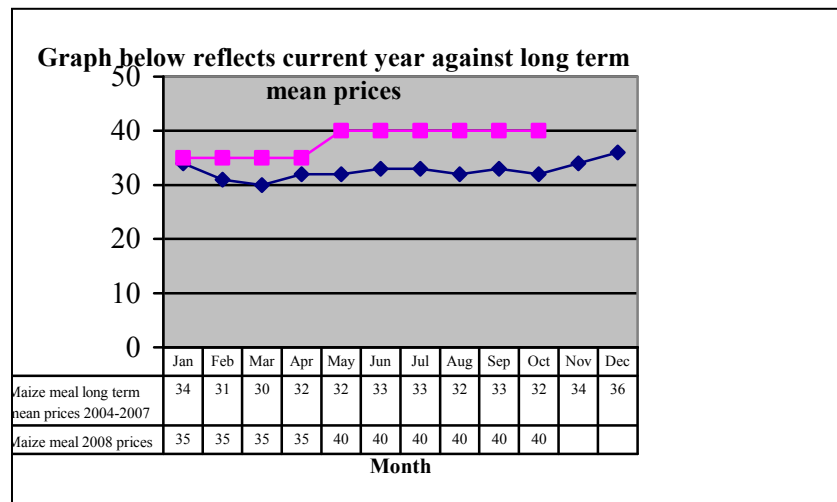
The graph below reflects Rice long term mean prices against current 2008 year



- The average prices of rice stabilised at Ksh 70 per kilo, the same as previous month but still high.
- This may be attributed to the high cost of transportation caused by increased fuel prices.
- The trend was not normal as the prices were supposed to be lower than what was recorded for the month.

### 3.4.2 Posho (Sifted maize meal) prices

*The graph reflects sifted maize meal long term mean prices against current 2008 year.*

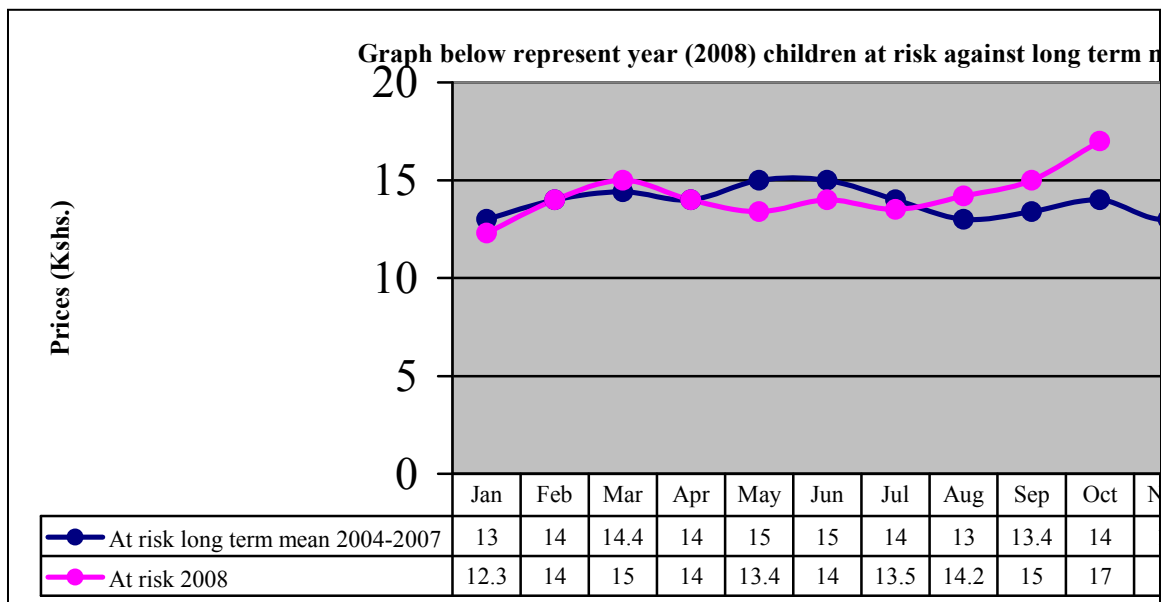


- The average price of sifted maize meal stabilized and remained at Ksh 40 per kilo.
- The price was, however, still high compared to the long term mean.
- The trend was not normal in for the time of the year since the prices were supposed to be lower than what was recorded and had a negative impact on household food security.

## 4.0 Welfare Indicators (utilisation of food)

### 4.1. Nutrition status

**The graph indicates long term mean of children (under fives) at risk against current 2008 year rates.**



- The nutritional status of children below five years deteriorated, with percentage of those rated as being at risk of malnutrition (based on the MUAC measurement) rising to 17 from 15 in September.
- The trend was not normal and was attributed to food shortage due to the dry spell.
- The pastoralist and agro-pastoralist livelihood zones of IJara and Abalatiro recorded the highest rate at 18.8 per cent.

#### 4.2 Human health

- No alarming disease outbreaks were reported.
- However, malaria and upper respiratory tract infections were the common ailments reported, though at manageable levels.

#### 4.3 Flagged areas

- Pastoralist and agro-pastoralist livelihood zones of Khoranhidi, Handaro, Sangailu, Ijara and Abalatiro areas were most affected.

#### 5.0 Current interventions

##### 5.1 Non- food interventions

- Construction of water harvesting structures for crop production by Ministry of Agriculture.
- Removal of water hyacinth from pans in Hulugho by water dept/ALRMP.
- Distribution of seeds to farmers by Ministry of Agriculture.
- Conducting of mobile outreach clinics by MOH/ALRMP.
- Distribution of Unimix and Vitamin A supplementation by MOH/UNICEF.
- Vaccination against CCBP and PPR. Already 9,600 cases of CBPP and 9,000 of PPR have been vaccinated.
- Establishment of tree nurseries—a total of 15,000 seedlings are in nurseries.
- Water pan protection measure- ALRMP, Ministry of Water, Global Concern Fund.
- Cash for work.

## **5.2. Food aid**

- Relief food provided to vulnerable households.

## **5.3. Coping strategies**

The coping measures adopted during the month were;

- Collection and sale of bush products, including honey and Aloe extracts.
- Herding and other casual work.
- Sales of quarry products.
- Petty trade.

## **6.0 Recommendations**

- Sustained disease surveillance by veterinary department and other stakeholders to contain any disease outbreaks.-Action: Vet department, ALRMP11, Womankind and Oxfam GB.
- The MOH should strengthen and sustain disease surveillance in order to avert increase in malaria incidences. Rural health facilities to be stocked with sufficient drugs for easy access by pastoralists. Anti-malarial campaigns should also be strengthened.-Action: MOH, DPHO and CBOs.
- Agricultural extension services should be strengthened by DAO.
- Conflicts over the three mile strip along the Tana River to be resolved by the concerned authorities.-Action :District Peace Committees, Local Authorities and the DSCs.
- Measures to control wildlife menace to be put in place.- KWS,Local Authority, IPAD, Conservation groups, Provincial administration, MPs.