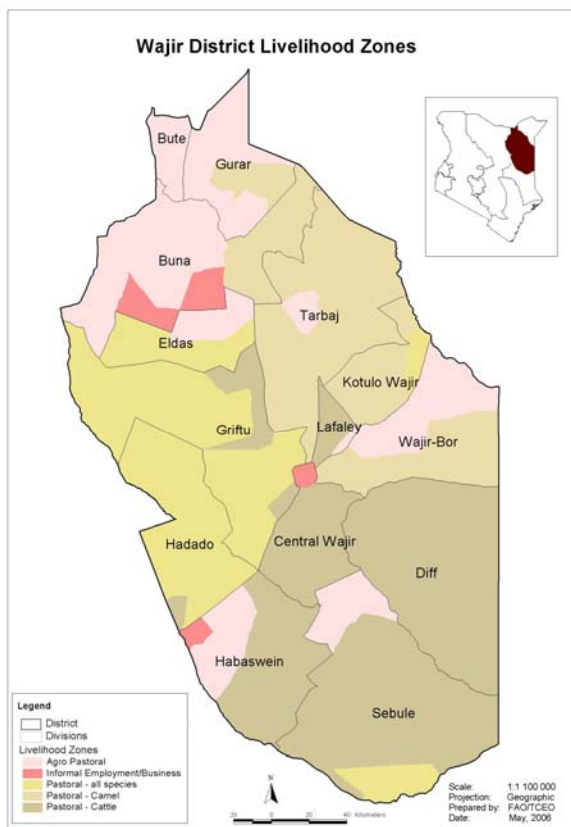




**OFFICE OF THE PRIME MINISTER
MINISTRY OF STATE FOR DEVELOPMENT OF NORTHERN KENYA AND OTHER ARID LANDS
ARID LANDS RESOURCE MANAGEMENT PROJECT II**

DROUGHT MONTHLY BULLETIN, OCTOBER 2008

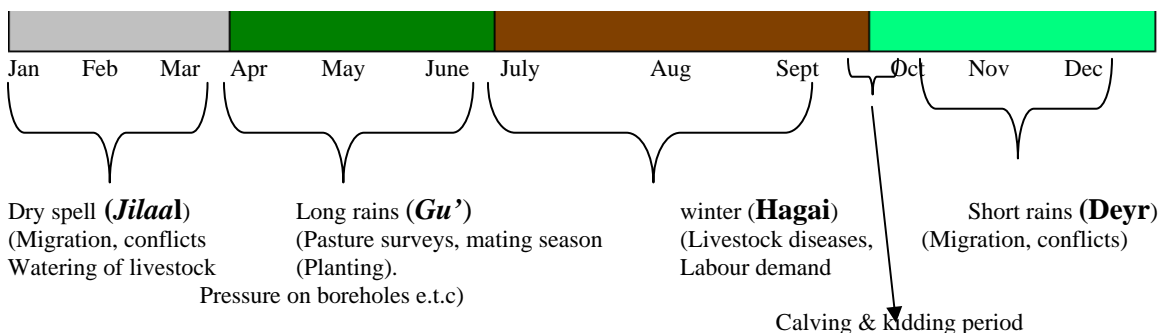
Wajir District



Warning Stages

Livelihood Zone	Warning Stage	Trend
Pastoral – All Species	Alarm	Worsening
Pastoral – Cattle	Alarm	Worsening
Pastoral – Camel	Alarm	Worsening
Agro – Pastoral	Alert	Worsening
Informal Employment/Business	Alarm	Worsening

Timeline Activities



Situation overview

- The district recorded only a few showers in Bute, Gurar, Takaba and Tarbaj division. The showers caused high migration of pastoralists to these areas.
- Since the rainfall was little, pans in the area did not collect any water availability worsened.
- More than 92 pans dried up and the number of areas being water trucked increased. The areas under water trucking include Wajir Bor, Ogorji, Lekole south and north Dugo, Iresteno, Lesayu, Gerille, Handaki, Lolkuta North, Boji, Adan Awale, Belatul amin, Gunana and Majabow, Qudama and Shimbirbul.
- Milk availability and supply continued to decline, while prices to an average of Ksh50-60 per 750ml bottle.
- Pasture and browse degenerated in quantity and quality, with average grazing distances rising to 30-50 km.
- Prices of cereals rose in the local market due to increase in fuel prices and poor infrastructure.
- The main causes of morbidity and mortality in the district pneumonia, diarrhoea, intestinal worms and malnutrition. Kalazaar was still endemic in the district and a few cases were reported in Wajir South and West.
- The overall security situation in the district was calm but conflicts over water and pasture were expected during the prevailing dry spell.
- The average livestock prices deteriorated, especially for animals from Mandera due to poor body condition and PPR outbreak the previous month.
- The nutrition status of children below five years deteriorated during the month, with the percentage of those rated as being at risk of malnutrition rose to 32.3 from 32.1 in September. The high rate could be attributed to declining milk availability and high cereal prices.
- Relief food distribution was still ongoing in the district with target of 139,893 beneficiaries. Food For Assets (FFA) program was also ongoing.
- The influx of livestock from the neighboring Mandera District still posed a threat to the few resources, leading to degradation and over-grazing.

Recommendations to DSG and KFSSG

- Urgent rehabilitation and repair of boreholes and strengthening of rapid response team in the district.
- Provision of contingency fund for the dry spell.
- Provision of standby generator set due to frequent breakdown, standby submersible pumps and repair of water boozers.
- More capacity building for water users association, especially on resource utilisation and conflict management.
- Regular diseases surveillance along the borders and endemic areas.
- Drilling of boreholes in centers without reliable water source.
- Strengthen livestock disease surveillance and management system.
- Increase the number of extension services providers and staffing level at Ministry of Health and Education.

- De-silting of existing water pans (120 in the district) in preparation of the rain
- Strengthening of early warning system to help detect and prepare for possible outbreaks, drought and mitigation measures.
- Strengthening of school-feeding program to sustain pupil retention in schools during the dry season.

Current interventions

Food aid

- EMOP program by World Food Program through the implementing agencies Oxfam, Aldef-Kenya and Wasda.
- Supplementary feeding program to children under five years by Merlin (NGO), SFP and support to other vulnerable children.
- School-feeding program and therapeutic feeding program by Merlin.
- Support to grannies by Catholic Missions.

Non -Food interventions

- Ad hoc vaccination against PPR.
- De-silting of some of existing pans through FFA program.
- Mobile VCT services supported by APHIA II.
- Water and sanitation activities by Oxfam.

1.0 Environmental indicators (Stability)

1.1 Rainfall

- No rainfall was recorded in the district during the month under review.

1.2 Condition of natural vegetation and pasture

- The quantity and quality of pasture and forage deteriorated due to the persisting drought.
- In-ward migration of animals from Eastern and Mandera district put a strain on available resources and environmental degradation.

1.3 Water source and availability

- The main water sources were shallow wells and bore holes and a few protected dams for human consumption. However, the water was grossly polluted.
- The trekking distances to water sources increased for both livestock and households.

1.3.1 Household access to water

- Access to water for households declined during the month, with average trekking distances to water sources increasing.
- The time taken in search of water stood at 4-5 hours in the pastoral community.

1.3.2 Livestock access to water

- Livestock trekked 45-50 km to access water during the month.
- The distance was expected to increase as the drought progresses.

1.4 Emerging issues

- Outbreak of Kalazaar.
- Boreholes breakdown.
- Conflicts over water and pastures.
- The quarantine following PPR outbreak aggravated the terms of trade for pastoralists.

1.4.2 Migration

- Inward migration of pastoralist from Mandera and neighboring Moyale District was reported during the month.
- Animals were concentrated in Wajir Bor, Gerile, Tarbaj, Griftu Sebule, Gurar, Eldas and Buna.

1.5 Implications on food security

- Failure of crops, low livestock prices and high food prices compromised the purchasing power of pastoralists, impacting negatively on food security in the district.
- Influx of pastoral communities from Mandera District put a strain on resources in the district, further posing a threat to food security.

2.0 Rural indicators (Food availability)

2.1 Livestock production

- Livestock production was extremely low due to water and pasture stress.
- This had a negative impact on the herd sizes of the pastoralist community.

2.1.1 Livestock body condition

- Animal body condition was generally good following the availability of pasture and browse which had been generated in the last season.
- However, the body condition was expected to deteriorate, especially if the short rains are not timely and adequate.

2.1.2 Livestock diseases

- No serious livestock disease was reported in the district during the month.

2.1.3 Milk production

- Milk production dropped slightly as pasture and browse declined in quantity and quality.
- The average market price of a bottle of milk (750ml) was between Ksh 50-60 at Wajir market.

2.2 Crop production

2.2.1 Timeliness and condition of crop production activities

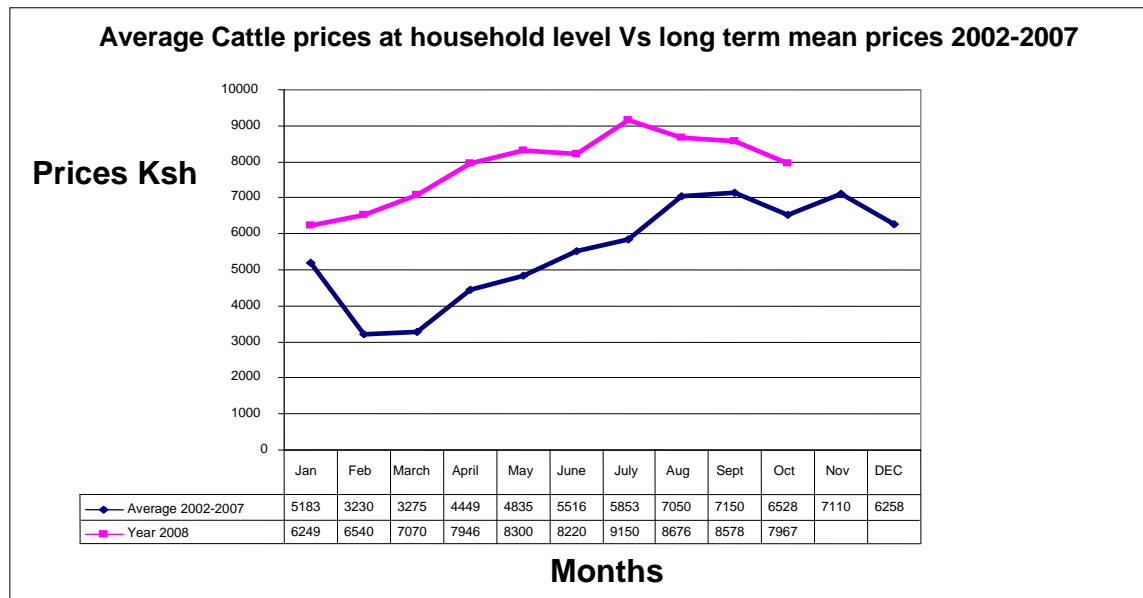
- Small garden farming was ongoing in Wajir central and other areas by use of small irrigation pumps and hand dug pans.
- Maize and millet were the main crops in farms.

3.0 Access to food

3.1 livestock marketing and sales

3.1.1 Cattle prices

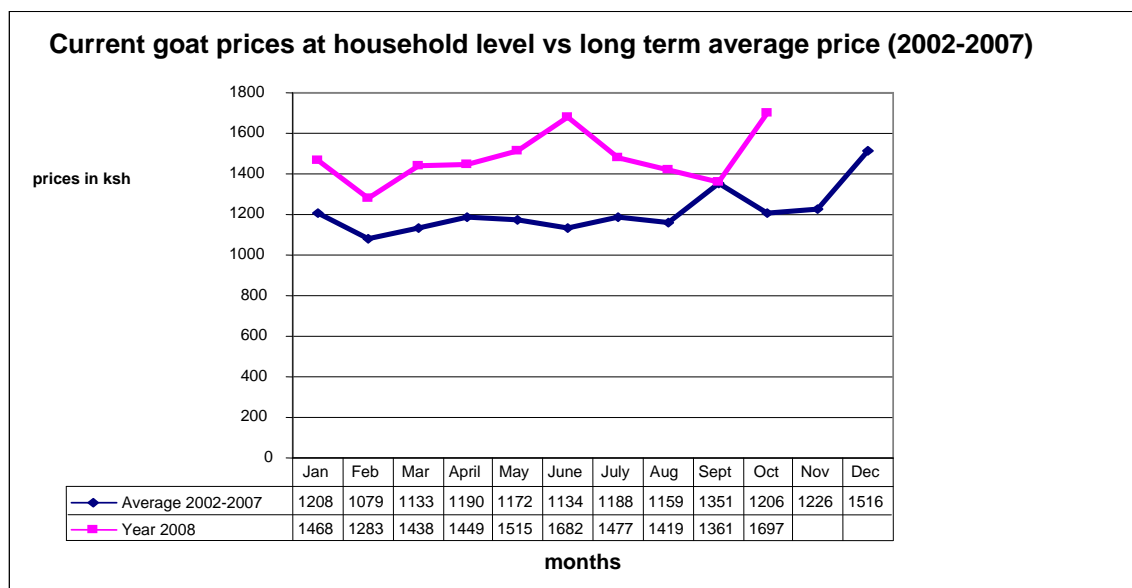
The graph below indicates cattle long term mean prices against current year 2008



- The price of cattle dropped significantly from Ksh 8,577.6 in September to Ksh 7,967.6.
- The decline was attributed to poor body condition as a result of insufficient pasture.

3.1.2 Goats prices

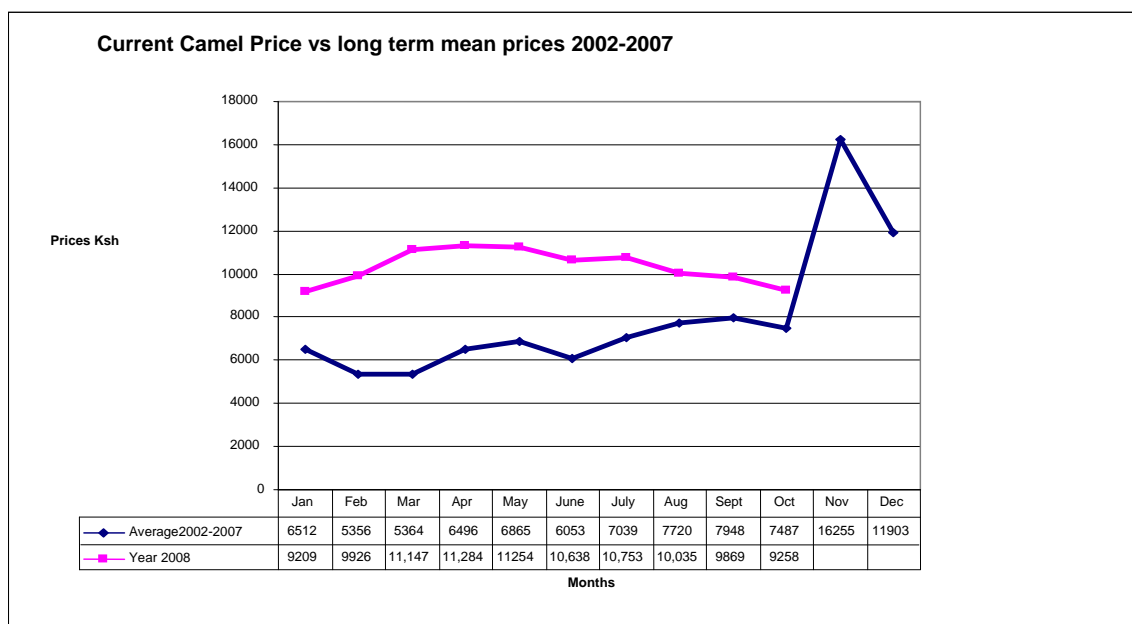
The graph indicates Goat long term mean prices against current year 2008



- The price of goats rose to Ksh 1,697 from Ksh 1,361 in September.
- The increase was attributed to access to markets.

3.1.3 Camel prices

The graph below indicates Camel long term mean prices against current year 2008



- Camel prices dropped to Ksh 9,258 from Ksh 9,869 in September.
- Animals from Mandera district were weak and emaciated compared to the ones from Wajir.

3.2 Livestock sales

- Livestock sales dropped due to poor body condition.

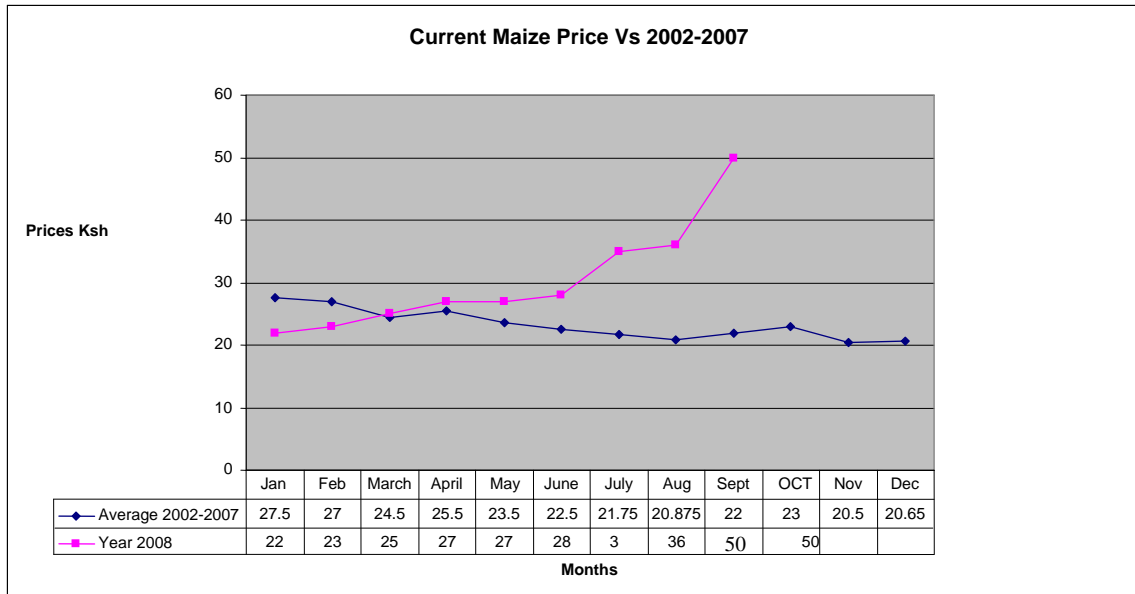
3.3 Milk consumption

- Milk consumption was low during the month due to inadequate pasture and browse.

3.4 Crop prices

3.4.1 Maize prices

The graph below indicates maize long term mean prices against current year 2008.



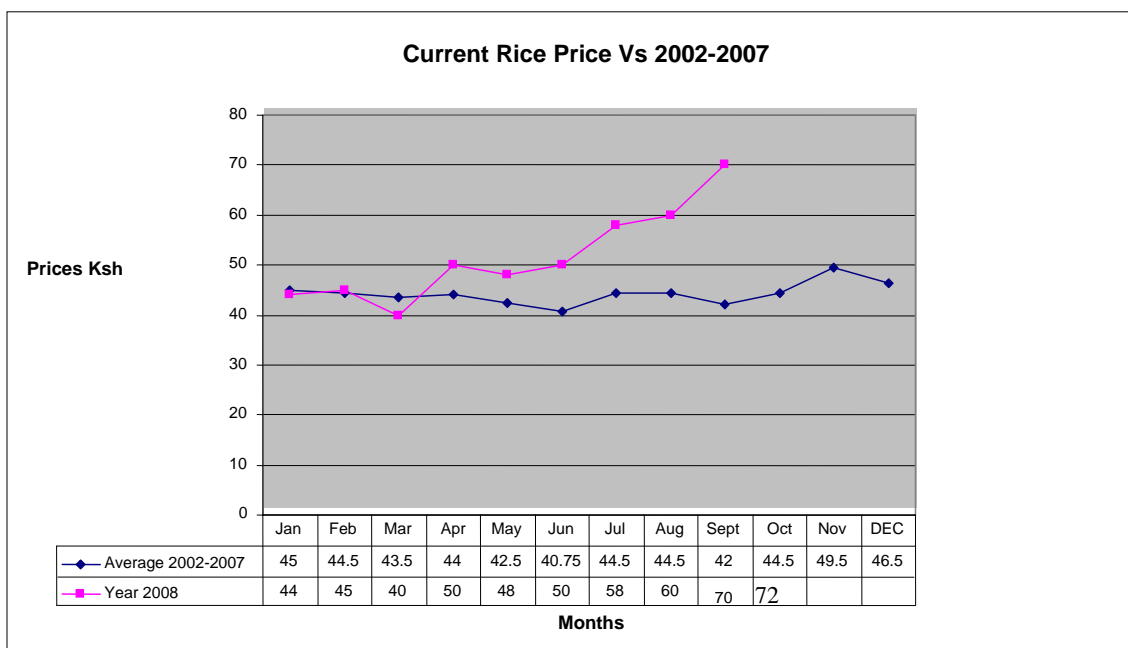
- Maize prices remained stable at Ksh50 per kilo during the month.
- The price was still too high compared to the long term mean.

3.4.2 Posho (maize meal) prices

- The price of posho stabilised at Ksh40 per kilo.
- However, the price was still too high compared to the long term mean.
- The price could be attributed to scarcity in the local market.

3.4.3 Rice prices

The graph below indicates long term mean prices of rice against the current year 2008.



- The price of rice fluctuated to Kshs 72 from Ksh 70 in registered in September.
- Compared to establish long term mean, prices are below normal.

3.5 Income

3.5.1 Crop income

- Kitchen farming using small irrigation pumps, especially in Wajir central provided income from crop sales.
- The produce was sold in the local markets.

3.5.2 Livestock income

- Though livestock sales were the main household income, the income source was threatened by encroaching drought stress.
- However, in the small business livelihood zone, most people engaged in livestock trade as brokers, middlemen or small-scale traders.
- Hides and skin were also transported to outside markets.
- Animals were also traded across the border in Ethiopia.

3.5.3 Other income

- Hawking, selling of miraa (khat), quarrying, casual labour, sale of firewood were the alternative sources of income, especially in Small business/informal livelihood zone.
- Though the general income was still low, production and sale of gum and resin were also commonly practiced.

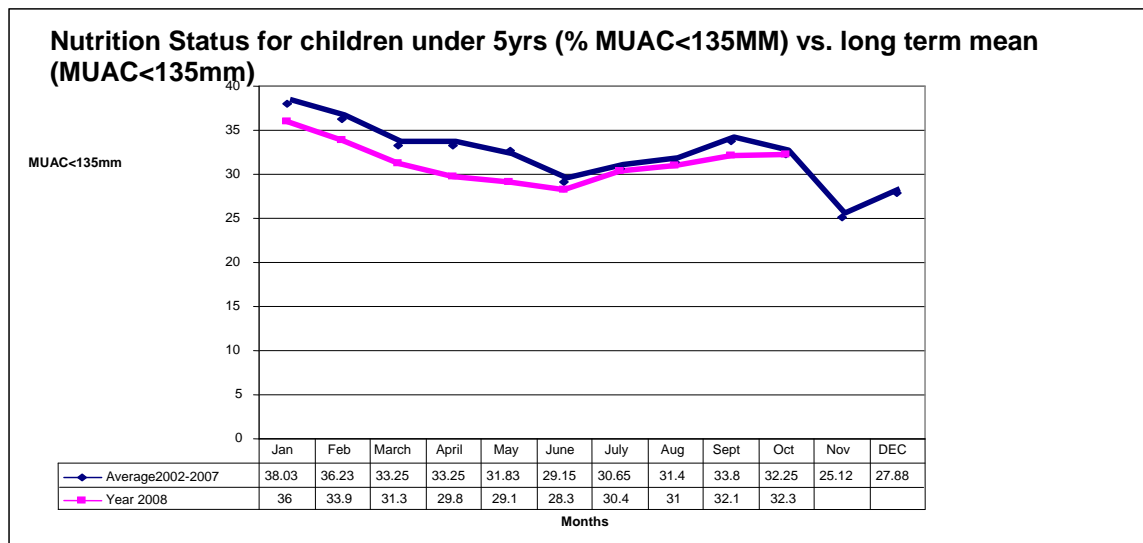
3.6 Implication on food security

- Falling livestock prices coupled with high food prices compromised the purchasing power of pastoralists and hence impacted negatively on the districts' food security.

4.0 Welfare indicators (utilisation of food)

4.1 Nutrition status

- The nutrition status of children below five years deteriorated during the month.
- The percentage of those rated as being at risk of malnutrition rose to 32.3 from 32.1 in September.
- The high rate could be attributed to declining milk availability and high cereal prices.



4.2 Health

- Malaria, upper respiratory tract infections, diarrhoeal diseases and malnutrition were the most common diseases during the month.
- The most affected was Wajir West District with over 36 cases hospitalised.

4.3 Flagged areas

Upsurge of Kalazaar may undermine nutrition status of children below five years.

5.0 Current interventions measure

5.1 Non food intervention

- Water and sanitation hygiene activities carried out by Oxfam.
- Credit scheme used as revolving fund by Aldef Kenya (NGO).
- Support to mobile school education through ALRMP and MOEST.

5.2 Food aid

- EMOP relief food distribution by WFP through lead agency, Oxfam, and implementing partners (ALDEF & WASDA) was ongoing.
- Outpatient therapeutic feeding and supplementary feeding Programmes (TFC) by Merlin at Wajir district hospital and all the thirteen divisions.

- Basic relief support from OOP, especially to vulnerable groups.
- FFA-food for asset program.

5.3 Other coping strategies

- Restricting of specific watering points close to settlements for human use, especially dams and ponds.
- Sale of quarry products.
- Reduction of number of meals per day.
- Purchase of food and non-food items on credit.
- Sale of miraa (khat) gum and resins.
- Sale of animals, especially the burden animals, to pay for subsidiary expenses such as fuel.
- Charcoal burning and sale of firewood.

6.0 Recommendations

- Mass treatment and vaccination of livestock, especially the shoats.
- Promote and improve sanitation and hygiene.
- Strengthening of disease surveillance along the border and curbing of Kalazaar at Arbajahan and Eldas.
- Support to orphans and vulnerable people through income-generating activities and material support.
- Food for training strategy to be considered and building of community capacity for asset management.
- Conflict early warning and peace-building initiatives to be strengthened.
- More hand pumps and solar assisted water supply system for shallow wells for schools and other institutions.
- Provision of vector control chemicals and equipments (LLTNs, Icons, Spray pumps and protective gear).
- Provision of more water kiosks at existing boreholes to improve separation of water points for human and livestock.
- Purchase submersible engine and standby Gen-set.
- Provision of a contingency fund for drought preparedness.