

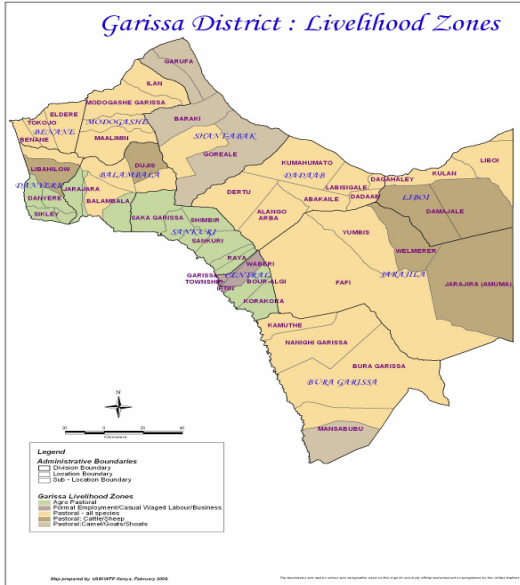


**OFFICE OF THE PRIME MINISTER
MINISTRY OF STATE FOR THE DEVELOPMENT OF NORTHERN KENYA AND OTHER ARID LANDS
ARID LANDS RESOURCE MANAGEMENT PROJECT II**

DROUGHT MONTHLY BULLETIN, SEPTEMBER 2008

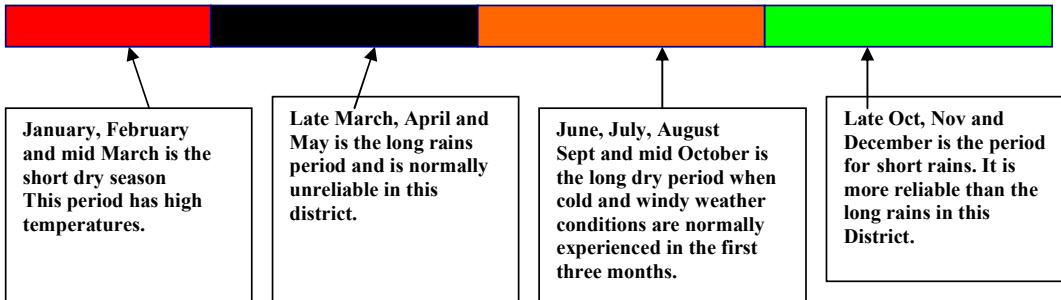
Garissa District

Warning Stages



Livelihood Zone	Warning stage	Trend
Agro-pastoral	Alert	Worsening
Formal employment/ Casual labor.	Alert	No change
Pastoral-Cattle/Sheep.	Alarm	Worsening
Pastoral- all species	Alarm	Worsening
Pastoral: Camels and Goats	Alert	Worsening
District	Alert	Worsening

SEASONAL CALENDAR



Situation overview

- No rainfall was recorded in the district during the month and temperatures rose significantly. The period was the worst of the long dry season.
- Pasture and browse got completely depleted in most parts of the district as most of the vegetation dried up. However, Galmagalla area was slightly green with growth of forbs under the trees.
- Browse for goats and sheep was available and their conditions continued to improve.
- Boreholes, River Tana, Benane springs, large water pans and shallow wells in Galana Gof remained the main sources of water for both domestic and livestock use during the month.
- Most water pans in the northern parts of the district either dried up or were about to. The quality of water also deteriorated, becoming unfit for human consumption.
- Most of the livestock in the eastern parts of the district was concentrated around boreholes and around shallow wells of Modogashe and Benane springs in the north. In the western and southern parts of the district, most of the livestock was concentrated around River Tana.
- Access to water for households continued to diminish compared to the preceding months. Most households had to trek long distances in search of water as distances to water sources continued to increase. Average trekking distance was 10-12kms during the month.
- The situation is expected to deteriorate further if the October short rains fail.
- Livestock access to water worsened compared to the preceding month. Most large water pans either dried up or were about to dry up.
- Livestock trekked about 12-16km to water sources since all grazing areas around large water pans in the interior and around permanent water sources got completely depleted of desirable or palatable vegetation.
- No cases of conflict or human displacement were reported during the month under review. Constant security surveillance was highly recommended following the volatile situation in Kismayu region of Somalia.
- The body condition of livestock continued to worsen compared to the preceding month, especially cattle and sheep. This was due to depletion of pasture/browse in areas close to permanent water sources, leading to long trekking distances in search of water.
- Milk production in the district continued to decline compared to the preceding month due to persisting long dry period with little or no pasture/browse.
- Cattle prices fell due to deteriorating body condition resulting from lack of pasture and prolonged dry conditions. Cattle fetched Ksh 9,567 down from Ksh 11,043 in August.
- The prices of goats rose slightly to Ksh 1,491 compared to Ksh 1,454 in August. Sheep prices improved due to demand during the month of Ramadhan.
- The nutritional status of children below five years continued to deteriorate, with the percentage of those rated as being at the risk of malnutrition rising to 7.3 from 6.9 in July. The status was attributed to reduced livestock products (milk) and food becoming inaccessible for most pastoral households.

Current interventions

Non-food interventions

- Repair, servicing and procurement of borehole equipment continued throughout the month.
- Water trucking continued in centres with acute water shortages.
- Action against Hunger continued to supply seedlings and seeds to farms along River Tana.

Food aid

- EMOP relief food distribution covering nine divisions with 45,905 beneficiaries. Galmagalla, Jarajilla and Liboi were not covered by the EMOP relief operations.

Recommendations to DSG and KFSSG

- More focus on repair of boreholes, servicing and procuring of equipment during the critical period could save lives.
- Continue to support small-scale farmers along the River Tana in terms of procuring pumping sets or farm tools.
- Livestock disease surveillance, treatment and vaccination activities.
- Continue to support capacity building of youths and women groups in the district through training and financing of micro-projects.
- Focus on agricultural and livestock extension services.
- Water trucking to centres experiencing acute water shortage.

1.0 Environmental indicators (stability)

1.1 Rainfall

- No rainfall was recorded during the month and temperatures rose steadily during the later part of the month.

1.2 Natural vegetation and pasture condition

- Pasture and browse got completely depleted in most parts of the district.
- Most of the vegetation dried up but Galmagalla area was slightly green with growth of forbs under the trees.
- Browse for goats and sheep was available and their condition continued to improve.

1.3 Water sources and availability

1.3.1 Use of water sources

- Boreholes, River Tana, Benane springs, large water pans and shallow wells in Galana Gof remained the main sources of water for both domestic and livestock in the district.
- Most water pans either dried up or were about to in the northern region.
- The quality of water deteriorated, becoming unfit for human consumption.
- Most of the livestock was concentrated around boreholes in the east, shallow wells of Modogashe and Benane springs to the north and River Tana to the west and south of the district.

1.3.2 Household access to water

- Water accessibility for household continued to diminish when compared with the preceding months.
- Most households trekked long distances in search of water. The distance between households and water sources continued to increase. Household members had to trek about 10-12km to water sources.
- It will be disastrous if the October short rains fail.
- This was the worst period of the long dry season. Water trucking started in centres experiencing acute water shortage.

1.3.3 Livestock access to water

- Livestock access to water diminished after most of the large water pans either dried up or were about to. All grazing areas around large water pans in the interior and around permanent water sources got completely depleted of desirable or palatable vegetation, resulting in livestock trekking about 12-16 m to water sources.

1.4 Emerging issues

1.4.1 Insecurity/Conflict/ Human displacement.

- No cases of conflict reported in the course of the month under review.
- However the security situation remains tense along the Kenya /Somalia border.
- Constant security surveillance was highly recommended following the volatile situation in Kismayu region of Somalia.

1.4.2 Migration

- Most of the livestock in the northern divisions especially Benane and Danyere moved to Isiolo and parts Kora Game Reserve.
- Livestock in the Eastern part of the district was concentrated around boreholes and Amuma water pans.
- In the south (Bura & Galmagalla) livestock was concentrated around river Tana and individual water pans respectively.

1.4.3 Implication on food security

Increased livestock and household trekking distances for water, depleted pasture / browse, deteriorating body condition of livestock especially cattle and sheep reflects negative food security implications in the greater Garissa district.

2.0 Rural economy indicators (food availability)

2.1 Livestock production

2.1.1 Livestock body condition

- The body condition of livestock continued to deteriorate, especially cattle and sheep due to depletion of pasture and browse in areas close to permanent water sources.
- This resulted in long trekking long distances in search of water.

2.1.2 Livestock health and diseases

- No outbreak of a notifiable livestock disease was reported but tick borne and other diseases were common in all livestock species.

2.1.3 Milk production

- Milk production in the district continued to decline compared to the preceding month.
- This was attributed to prevailing long dry period, resulting in little or no pasture or browse.

2.2 Cop production

2.2.1 Timeliness and condition of various crop production activities

- Vegetables and fruits were produced in the irrigated farms along the River Tana.
- No crop production activities were reported in the rain-fed farms in the rural areas.
- More people started practicing farming, leading to opening up more land for irrigation along the river Tana.

2.2.2 Pests and crop diseases

- No major crop pests or diseases were reported in the course of the month under view.

2.2.3 Crop harvest

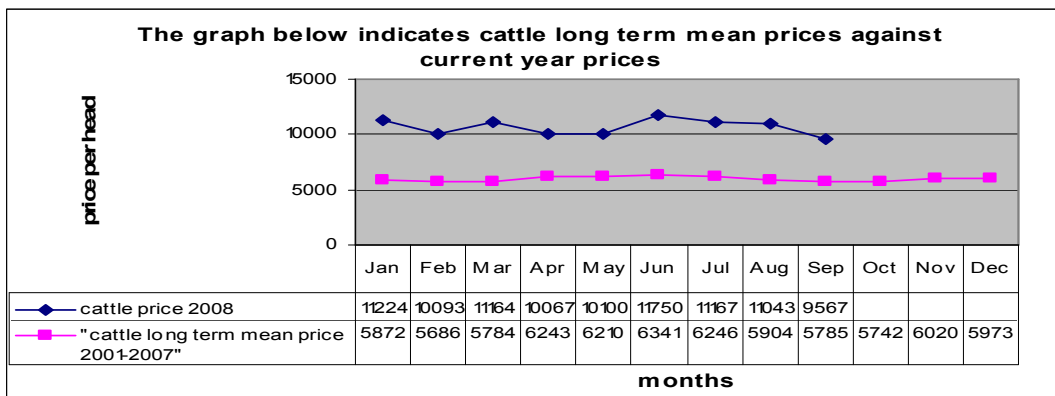
- Fruits and vegetables were the main produce in the irrigated farms along River Tana.
- The produce had a ready market in Garissa municipality.

3.0 Access to food

3.1 Livestock Marketing

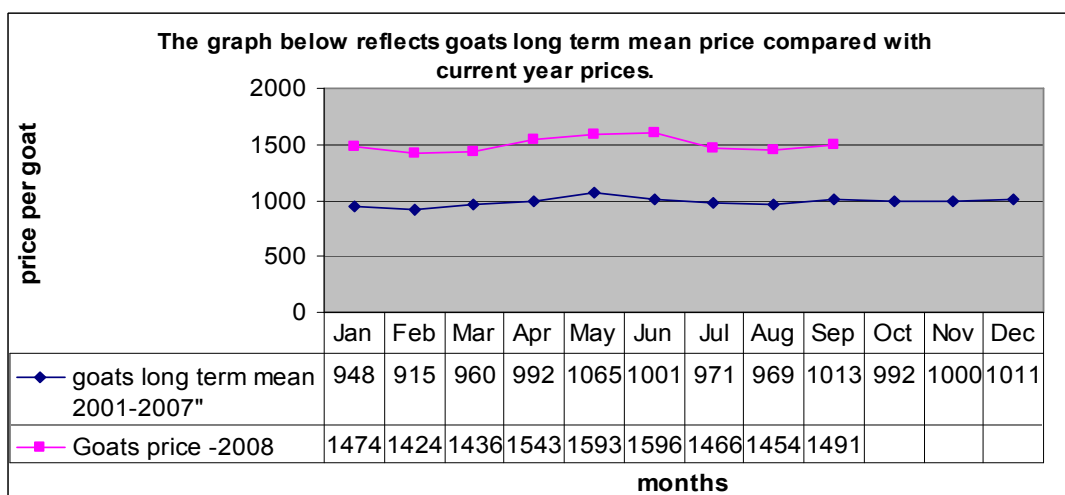
3.1.1 Cattle prices

- Cattle prices continued to drop due to deteriorating body conditions resulting from lack of pasture and prolonged dry conditions. The price of cattle stood at Ksh 9,567, down from Ksh 11,043 in August.



3.1.2 Goats prices

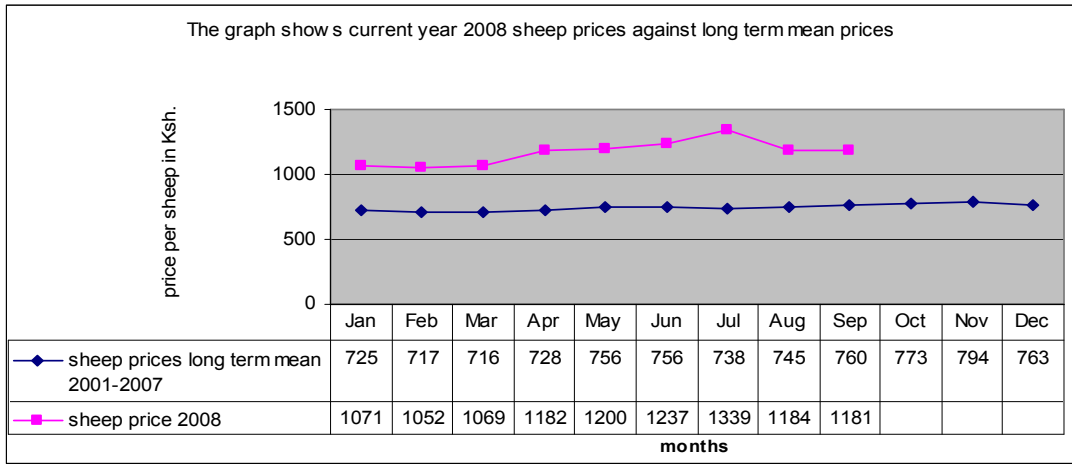
- The prices of goats rose slightly to Ksh 1,491 from Ksh 1,454 in August. The increase was attributed to increased demand during the month of Ramadhan.



3.1.3 Sheep prices

- Sheep prices rose slightly compared with the preceding months due to demand during the month of Ramadhan.
- Average sheep price was Ksh 1,184 in August and Ksh 1,181 in September.

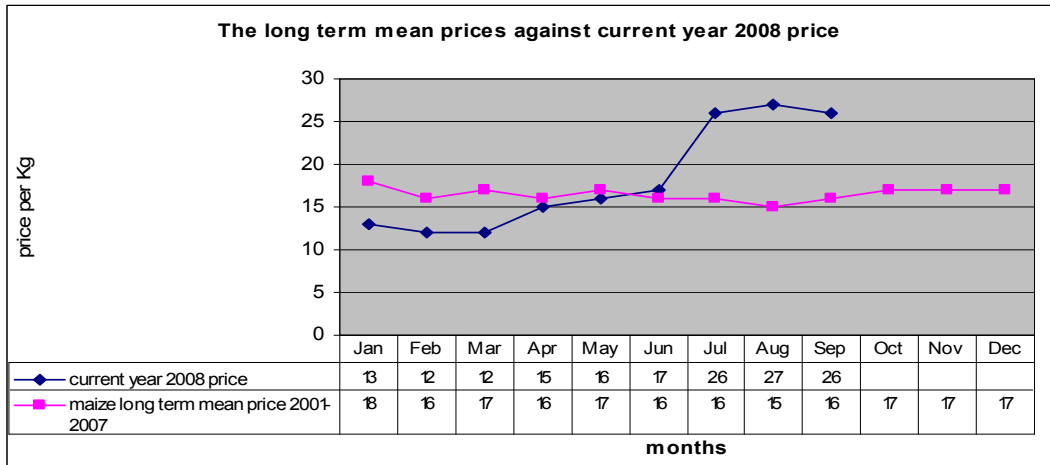
Comment [I1]: Contradiction. While the demand during Ramadhan presents a strong case for a price rise, the graph indicates that the price dropped from Ksh 1,184 in August to Ksh 1,181.



3.3 Crop prices

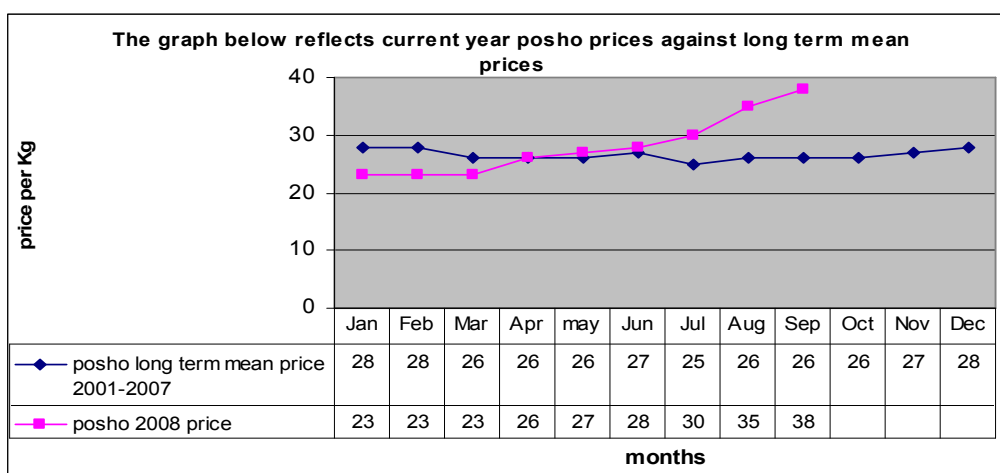
3.3.1 Maize prices

- Maize prices remained stable compared to the preceding month. The price was Ksh 26 per kilo compared to Ksh 27 per kg in August.
- Cereal prices stabilized after food was distributed in different parts of the district under Food for Assets project with donation from GoK.



3.3.2 Posho (maize meal) prices

- The price of posho, which is an end product of maize rose compared to the preceding month. The price stood at Ksh 38, up from Ksh 35 in August.



3.3.3 Other food purchases

Prices of beans and sugar remained stable. The price of cooking oil stood at Ksh 147 per kilo while beans and sugar cost Ksh 80 and Ksh 71 respectively.

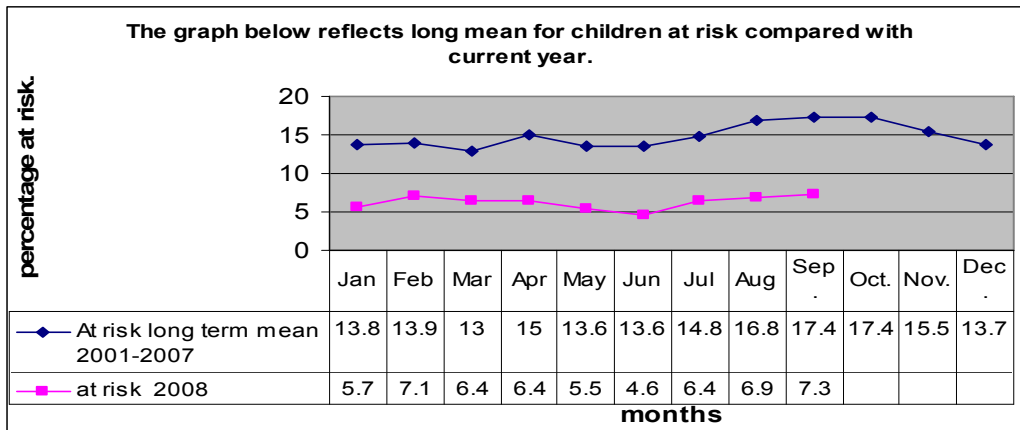
3.4 Implications on food security

- High food prices coupled with depletion of pasture /browse for livestock impacted negatively on food security.

4.0 Human welfare indicators

4.1 Nutritional status

- The nutritional status of children below five years continued to deteriorate, with the percentage of those rated as being at the risk of malnutrition rising to 7.3 from 6.9 in July.
- The status was attributed to reduced livestock products (milk) and food becoming inaccessible for most pastoral households.



4.2 Human health

- No human disease outbreak was reported in the district.
- However, cases of vitamin A deficiency were reported in Galmagalla division and were attended to by the Ministry of Health through facilitation of ALRMP.

4.3 Flagged areas

- Danyere ,Shanta Abak and Benane were worst affected by the prevailing drought.

5.0 Current interventions

5.1 Non-food interventions

- Repair, servicing and procurement of borehole equipment continued throughout the month.
- Water trucking continued in centres with acute water shortages.
- Action against Hunger continued to supply seedlings and seeds to farms along River Tana.

5.2 Food aid

- EMOP relief food distribution covering nine divisions with 45,905 beneficiaries. Galmagalla, Jarajilla and Liboi were not covered by the EMOP relief operations.

5.3 Coping strategies

- Petty trade at livestock watering centres.

6.0 Recommendations

- More focus on repair of boreholes, servicing and procuring of equipment during the critical period could save lives.
- Continue to support small-scale farmers along the River Tana in terms of procuring pumping sets or farm tools.
- Livestock disease surveillance, treatment and vaccination activities.
- Continue to support capacity building of youths and women groups in the district through training and financing of micro-projects.
- Focus on agricultural and livestock extension services.

- Water trucking to centres experiencing acute water shortage.