

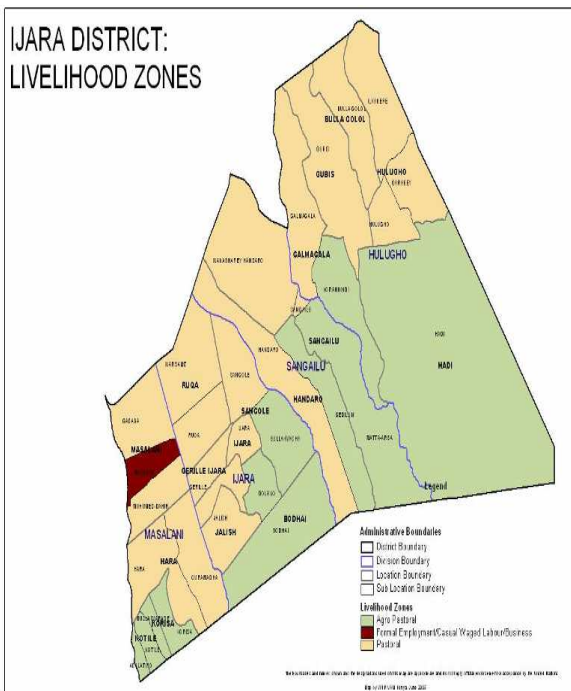


**OFFICE OF THE PRIME MINISTER**  
**MINISTRY OF STATE FOR THE DEVELOPMENT OF NORTHERN KENYA AND OTHER ARID LANDS**  
**ARID LANDS RESOURCE MANAGEMENT PROJECT II**

**DROUGHT MONTHLY BULLETIN, SEPTEMBER 2008**

**Ijara District**

**Warning Stages**



Livelihood Zone	Stage	Trend
Pastoral	Alert	Worsening
Agro pastoral	Alert	Worsening
Formal employment/ Casual labor	Normal	No change

**Seasonal Calendar**

<i>-Milk yields drop</i> <i>-Livestock moves towards dry season grazing zones</i>			<i>-High milk yields</i> <i>-Livestock moves to the traditional wet grazing areas.</i> <i>-High calving, kidding and lambing rates.</i>			<i>-Low milk availability</i> <i>-Livestock moves towards the fall back dry seasons grazing areas (Boni forest)</i> <i>-Wildlife-human conflicts</i>				<i>-High milk yield</i> <i>-Livestock moves towards traditional wet seasons grazing areas</i> <i>-High mating rates</i>		
Short Dry Spell			Long rains			Long dry spell				Short rains		
Jan	Feb	Mar	Apr	May	Jun	Jul	Aug	Sept	Oct	Nov	Dec	

### **Situation overview**

- No rain was received in the district during the month under review.
- Dry and hot weather conditions prevailed in the district throughout the month.
- The quality and quantity of browse and pasture deteriorated due to prevailing high temperatures.
- Satellite herds remained in the Boni forest with no indication of movement northwards.
- Most of the small and medium water pans dried up and large water pans remained the main sources of water. The water pans contained substantial volumes of water and were expected to sustain pastoralists for the three months. However, although quality of water remained poor.
- The pastoralist livelihood zones of Warsame, Abdigure, Dololo, Shabelle, Alihaithar, Sagar and Gababa experienced water stress.
- The average prices of all categories of livestock were low, though a slight increase was noted in cattle and sheep. Cattle fetched the highest prices at Ksh10, 676 up from Ksh 9,763 in August.
- The livestock body condition and health was rated fair for cattle but remained poor for shoats in all livelihood zones.
- The increase in distances to water sources is expected to result in further deterioration of livestock body condition.
- The nutritional status of the under fives years (based on MUAC measurement) deteriorated, with the percentage of those rated as being at risk of malnutrition rising to 14.8 per cent from 14.2. The decline was attributed to malaria and respiratory tract infections, with the most affected sentinel sites being Khoranhidi, Sangailu and Ijara.
- There was no inward migration in the district during the month. However, outward migration to Tana River District and Lamu increased, and satellite herds were still camped at Witu, Boni forest and Tana Delta.
- Household access to water declined slightly, with recorded trekking distance rising to 8km from 7km in August.
- Livestock access to water showed no significant change and remained at 7km-13km.
- PPR and CCPP continued to affect shoats, while cases of CBPP in cattle were reported in the agro-pastoralist zones, especially in Hulugho, Sangailu, Kotile, Bodhai Jalish and Bulto Hama.
- Milk availability reduced in all livelihood zones due to migration of milking herds to dry grazing areas in Boni forest and riverine in search of pasture and water.
- The drought situation in the entire district was at alert stage and worsening.

### **Current interventions**

#### **Non- food interventions**

- Construction of water harvesting structures for crop production by Ministry of Agriculture.
- Water hyacinth removal from pans in Hulugho by water dept/ALRMP.

- Seeds distribution to crop farmers by ministry of Agriculture.
- Conducting of mobile outreach clinics by MOH/ALRMP.
- Distribution of Unimix and Vitamin A supplementation by MOH/UNICEF.
- Vaccination against CCBP and PPR, already 9,600 cases of CBPP and 9,000 of PPR has been vaccinated.
- Establishment of tree nurseries—a total of 15,000 seedlings are in nurseries.
- Water pan protection measure- ALRMP, Ministry Of Water, Global Concern.

#### **Food aid**

- Relief food distribution to vulnerable households.

#### **Recommendations to district authorities and KFSSG**

- Sensitise the community on nutritional and commercial value of fish.
- Strengthen outreach clinics and organise medical camps with other actors.
- Measures to curb wildlife should be strengthened by KWS.
- PPR and CCPP vaccination campaigns to continue across the district.
- Provision of safe drinking water to prevent outbreaks of communicable diseases.
- Continue to encourage and support crop farming in the agro-pastoralist zone through programmes such as Njaa Marafuku, provision of seeds and other inputs to enhance food security in the district.
- Reduce levels of malnutrition children under five, pregnant and lactating women through provision of supplementary foods, medical and awareness programmes.
- Encourage construction of pit latrines and toilets in settlements and schools and provision of safe drinking water to prevent diarrhoeal disease outbreaks.
- Increase and enhance supply of portable water for human consumption in urban areas, particularly Masalani.
- Strengthen measures to combat malaria and improve sanitation.
- Resolve conflicts over access to River Tana by pastoralists from Ijara.
- Continue water trucking to institutions such schools in areas experiencing water stress.
- Continue and strengthen extension services through NALEP.
- Continue vaccination/and effective disease surveillance by the veterinary department.

### **1.0 Environmental Indicators (Stability)**

#### **1.1 Rainfall**

- No rain was received in the entire district during the month under review.
- Dry and hot weather conditions persisted in all livelihood zones throughout the month.

## **1.2 Condition of natural vegetation and pasture**

- The quality and quantity of vegetation, including browse and pasture, deteriorated in all livelihood zones during the month under review.
- This was attributed to the effects of dry spell.
- Diminishing levels of pasture and browse caused shortage of milk in pastoralist livelihood zones of Sangailu and Ijara.
- The trend was normal at the time of year and season since browse and pasture are supposed to be on a diminishing scale.

## **1.3 Water sources and availability**

### **1.3.1 Use of water sources**

- Most of the water ponds, small and medium pans dried up and only large water pans remained with substantial volumes of water. These were expected to sustain pastoralists for the next one month.
- However severe water stress was reported in the pastoral livelihood zones of Dololo, Abdigure and Warsame.
- River Tana remained the main source of water for residents of the district headquarters at Masalani.
- The availability of water and easy access impacted positively on food security in the district. However, there was concern over the poor quality of water in most parts of the district.

### **1.3.2 Average distance (Kms) to water sources**

- The average distance to water sources from grazing areas and households was recorded at 8km, almost the same as last month's 7km.
- The trend was normal for such a time of the year due to the progressing dry weather.

## **1.4 Emerging issues**

### **1.4.1 Conflicts/ insecurity/human displacement**

- Increased cases of human/wildlife conflict were reported.
- This was attributed swelling numbers of wildlife as a result of displacement from Somalia and encroachment on wildlife habitats and migration routes by human activities in the area.

### **1.4.2 Migration**

Most livestock moved to the dry season grazing areas inside the Boni forest and parts of Lamu district, notably, around Witu division, and Tana River.

## **1.5 Implication on food security**

The prevailing dry spell and diminishing pasture impacted negatively on the food security situation.

## **2.0 Rural economy indicators (food availability)**

### **2.1 Livestock production**

### 2.1.1 Livestock body condition

- The body condition and health status for all livestock categories was fair in all livelihood zones.
- The trend was not normal compared with the same period in previous years.
- This impacted negatively on household food security, since poor body conditions resulted in lower prices and lower milk yields.

### 2.1.2 Livestock diseases

The prevalent diseases in the district were:

- Cattle – LSD, CBPP, Trypanosomiasis and black quarter anthrax.
- Sheep-Helthminthiasis, sheep introtoxicimea and pulpy kidney disease.
- Goats-CCPP, Helminthiasis, Trips.
- Tsetse fly infestation remained posed a challenge to pastoralists’ since the cost of treatment and veterinary services was exorbitant and their income low.

### 2.1.3 Milk production

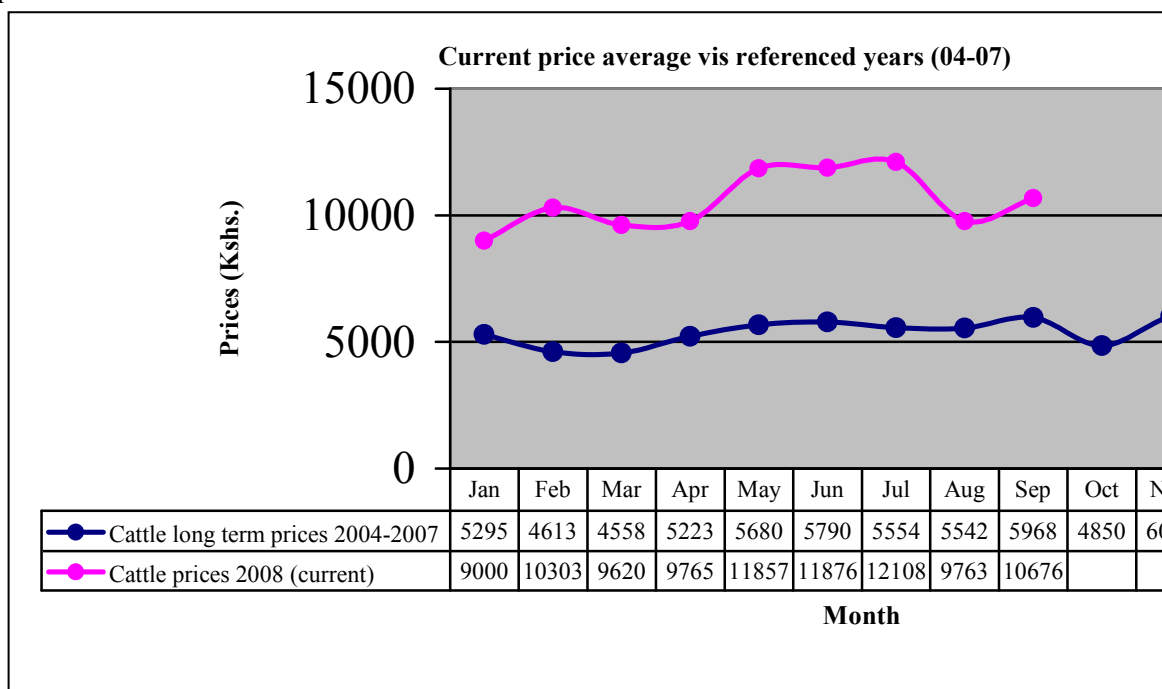
- Milk production dropped in all livelihood zones compared with the preceding month. This was attributed to the prevailing hot dry spell.
- The reduced milk production affected the household food security since pastoralists mostly depend on milk.

## 3.0 Access to food

### 3.1. Livestock marketing

#### 3.1.1 Cattle prices

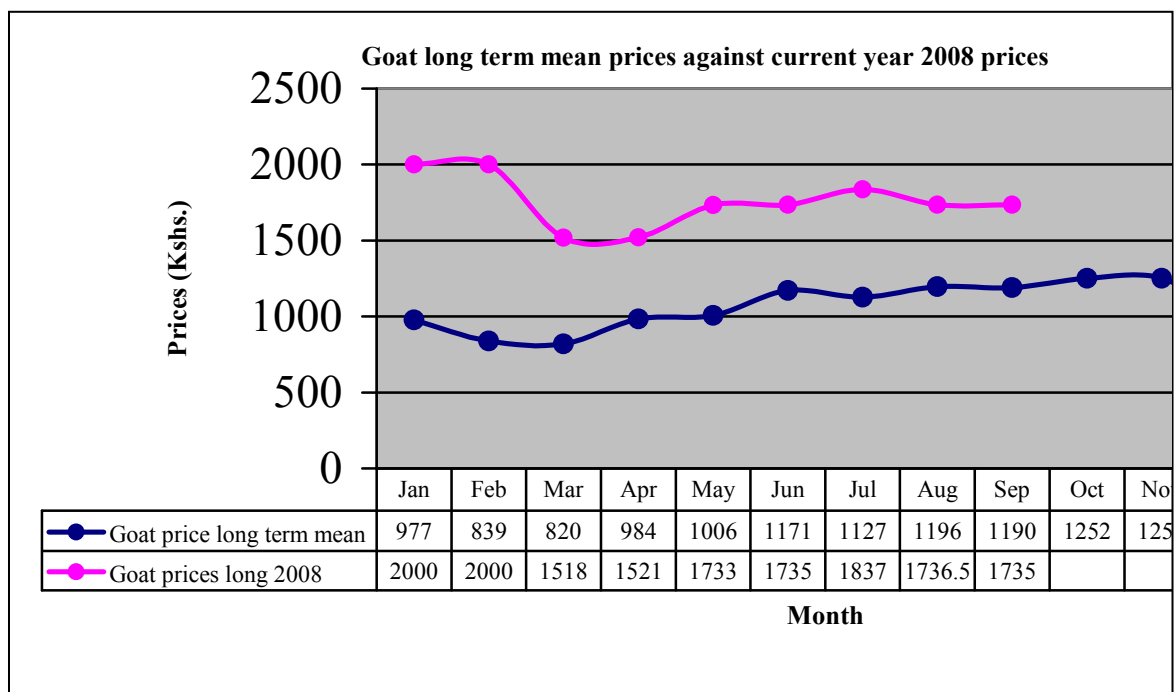
*The graph below indicates cattle long term mean prices against current year 2008 prices.*



- Cattle prices increased from Ksh9,763 in August to Ksh10,676.
- However, the trend was normal compared to the long term mean and had no effect on food security.
- Pastoral and formal/casual employment livelihood zones recorded the highest cattle prices at Ksh 12,857 and Ksh 10,450 respectively, while the agro-pastoralist livelihood had the lowest.

### 3.1.2 Goat prices

The graph below indicates goat's long term mean prices against current 2008 year

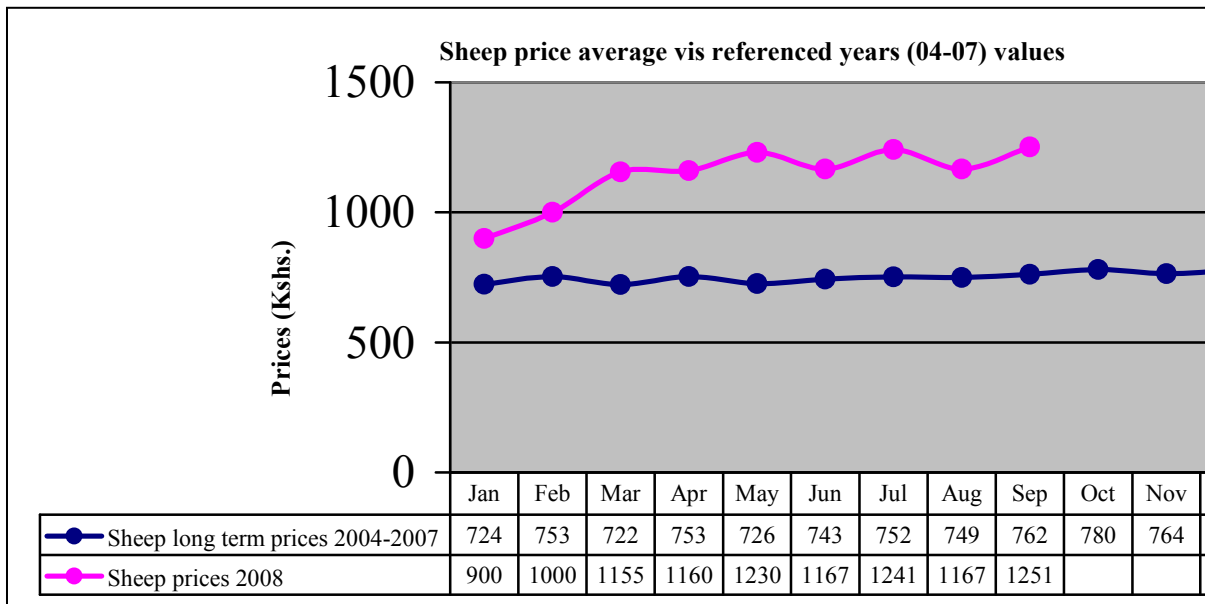


prices.

- Average goat prices decreased to Ksh1,735 from Ksh1,736.5. The decrease was not normal for the time of the year.
- The price drop was attributed to deteriorating body condition and lack of a proper market in the district.
- The trend was not normal but had insignificant impact on food security.

### 3.1.3 Sheep prices

The graph below indicates sheep long term mean prices against current 2008 year prices.



- The prices of sheep increased from Ksh1,167 in August to Ksh1,251. This was also higher than long term mean.
- The price increase was attributed to high demand during the month of Ramadhan.
- The trend was not normal as the prices were expected to be higher. This may be attributed to lack of markets in the district.
- Pastoral and agro-pastoral livelihood zones had the highest prices recorded at ksh1266.7 and ksh1400 respectively.

### 3.2 Livestock sales

- Livestock sales decreased for all categories of livestock compared to the last reporting period.
- This was normal trend and had no impact on household food security.

### 3.3 Milk consumption

- The availability of milk for consumption in all the sentinel sites declined due to effects of the dry spell and prevalent diseases.
- This had a negative impact on household food security since only 9 per cent of children under five accessed milk.

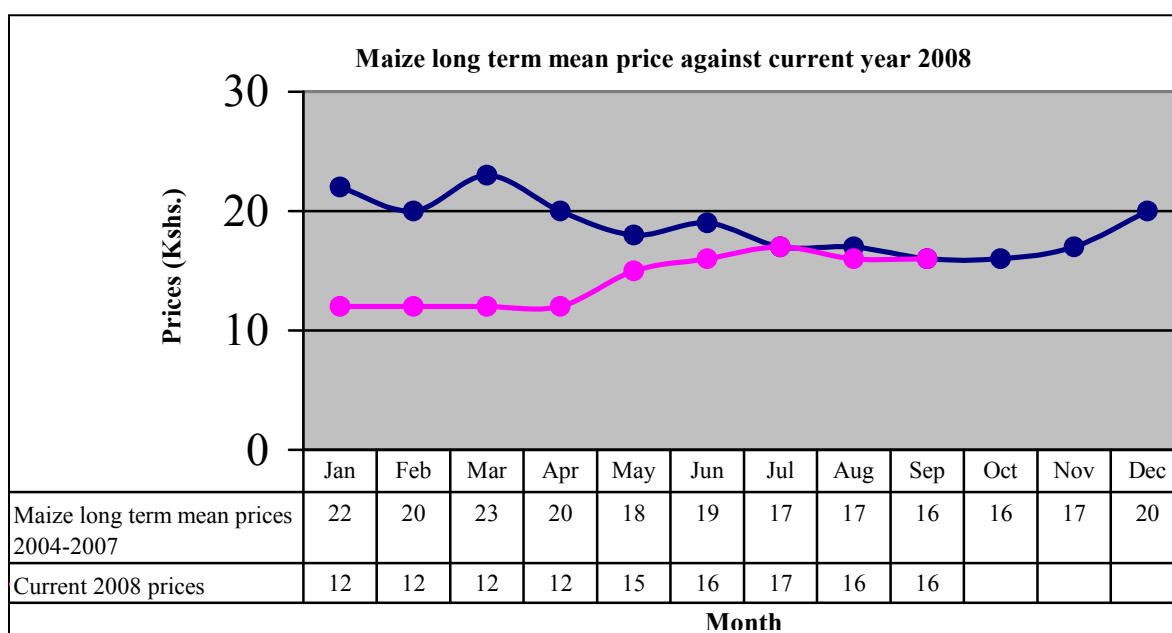
### 3.4 Crop prices

Prices of foodstuffs remained stable during the month under review and price levels recorded almost same as previous month.

### 3.4.1 Maize prices

- The average price of maize dropped in all the sentinel sites compared with the preceding month. The average price stabilised at Ksh 16 per kilo.
- This may be attributed to recent the harvest in agro-pastoralist zones in Bothay, Tana basin, Kotiley and Hulugho and distribution of GOK relief food to vulnerable households.
- The trend was normal for the time of year as prices are expected to drop further.
- The observed trend impacted positively on food security in the district.

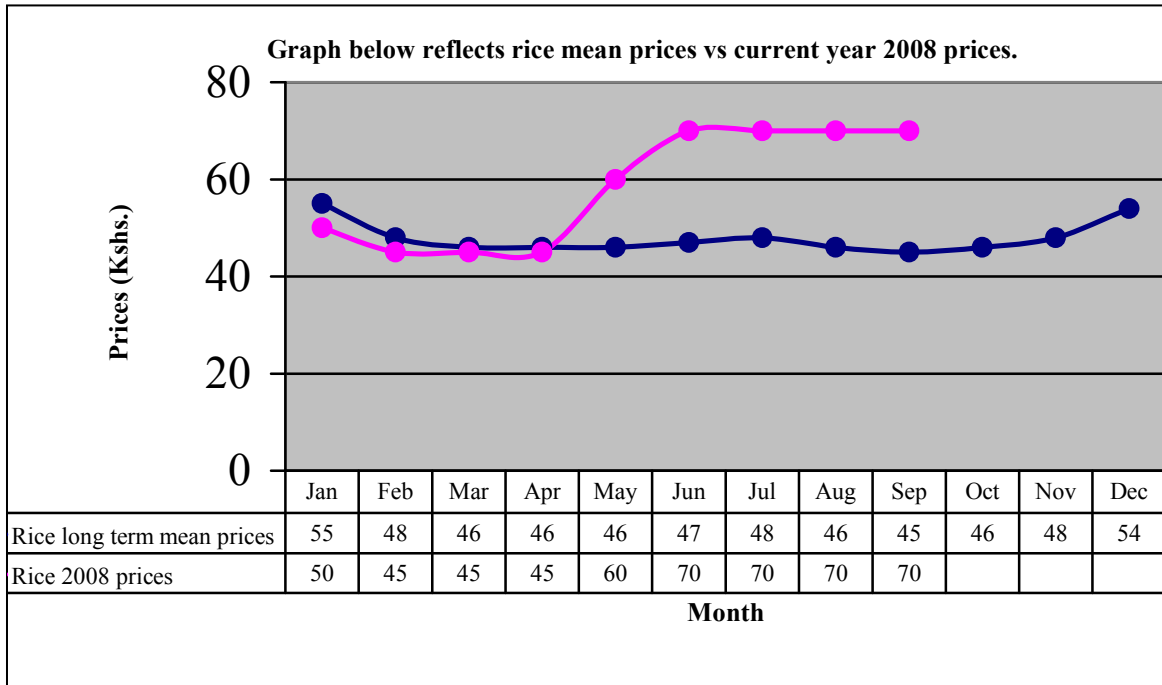
*The graph below reflects maize long term mean prices against current 2008 year prices.*



### 3.4.3 Rice prices

- The average prices of rice stabilised at Ksh 70 per kilo.
- The trend was not normal as the prices were supposed to be lower than last month.
- This may be attributed to the high cost of transportation caused by increased fuel prices.

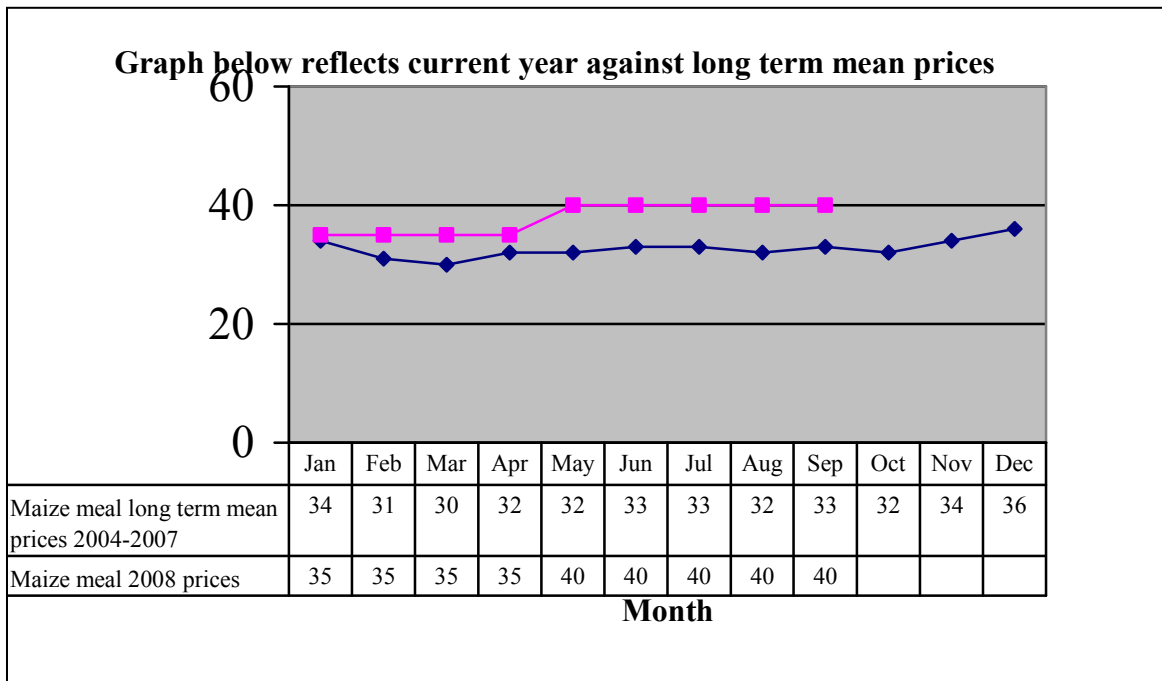
The graph below reflects Rice long term mean prices against current 2008 year.



### 3.4.2. Posho (maize meal ) prices

- The average price of posho remained at Ksh40 during the month under review.
- The trend was normal for the time of year and prices are expected to rise due to increased demand.
- However, this had insignificant impact on household food security.

The graph below reflects sifted maize meal long term mean prices against current 2008

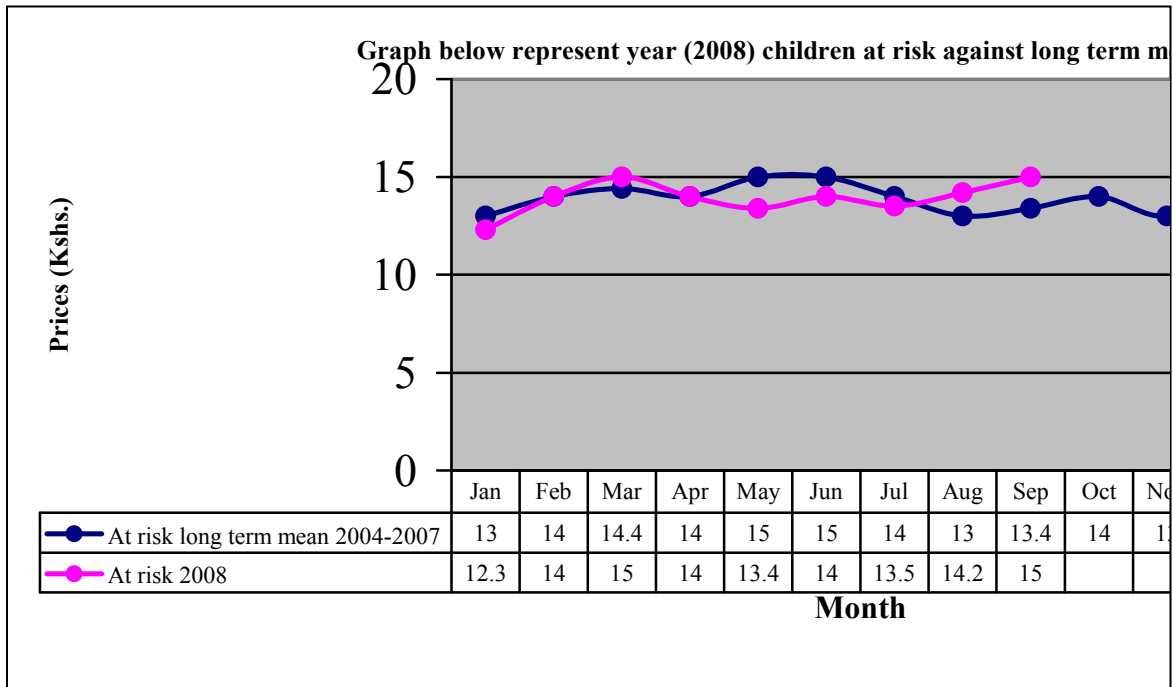


year.

#### 4.0 Human welfare indicators

##### 4.1. Nutrition status

The graph below indicates long term mean of children (under fives) at risk against Current 2008 year rates.



- The nutrition status of children below five deteriorated, with those rated as being at risk of malnutrition rising to 14.2 per cent from 13.5 in August.
- The trend was normal compared to the long term mean and was attributed to the food shortage due to the prevailing dry spell.
- The pastoral livelihood zone of Sangailu and Khoranhidi recorded the highest rate at 18 per cent.

##### 4.2 Human health

- No alarming disease outbreaks were reported.
- However Malaria and upper respiratory tract infections were the common ailments reported, though at manageable levels.

##### 4.3 Flagged areas

- Pastoralist livelihood zones including Khoranhidi, Handaro and Sangailu were the most affected.

#### 5.0 Current interventions

##### 5.1. Non- food interventions

- Construction of water harvesting structures for crop production by Ministry of Agriculture.
- Water hyacinth removal from pans in Hulugho by water dept/ALRMP.
- Seeds distribution to crop farmers by ministry of Agriculture.
- Conducting of mobile outreach clinics by MOH/ALRMP.
- Distribution of Unimix and Vitamin A supplementation by MOH/UNICEF.
- Vaccination against CCBP and PPR, already 9,600 cases of CBPP and 9,000 of PPR has been vaccinated.
- Establishment of tree nurseries—a total of 15,000 seedlings are in nurseries.
- Water pan protection measure- ALRMP, Ministry Of Water, Global Concern.

## **5.2. Food aid**

- Relief food distribution to vulnerable households.

## **5.3 Coping strategies**

The coping measures adopted during the month included:

- Collection and sale of bush products including honey and Aloe extracts.
- Herding and other casual work.
- Sale of quarry products.

## **6.0 Recommendations**

- Disease surveillance should be sustained by veterinary department and other stake holders. Action: Vet department, ALRMP11, Womankind and Oxfam GB.
- The MOH should strengthen and sustain disease surveillance to avert increase in malaria incidences.
- Rural health facilities to be stocked with sufficient drugs for easy access by pastoralists. Anti-malarial campaigns should also be strengthened. Action: MOH, DPHO and CBOs.
- DAO should strengthen agricultural extension services.
- Conflicts over the three mile strip along the Tana River to be resolved by the concerned authorities. Action :District Peace Committees, Local Authorities and the DSCs.
- Measures should be put in place to control wildlife menace:- Action- KWS,Local Authority,IPAD,Concervation groups, Provincial administration and MPs.