

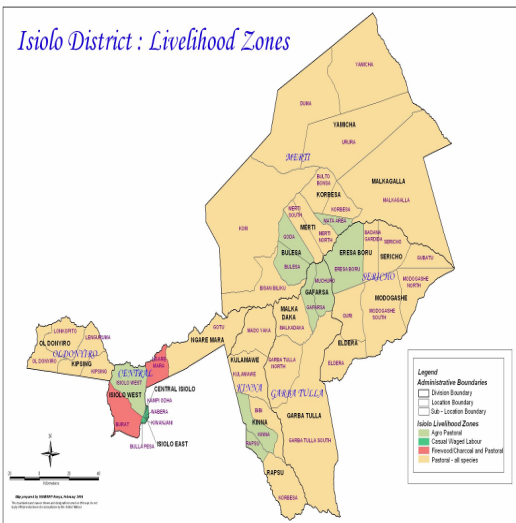


**OFFICE OF THE PRIME MINISTER
MINISTRY OF STATE FOR THE DEVELOPMENT OF NORTHERN KENYA AND OTHER ARID LANDS
ARID LANDS RESOURCE MANAGEMENT PROJECT II**

DROUGHT MONTHLY BULLETIN, SEPTEMBER 2008

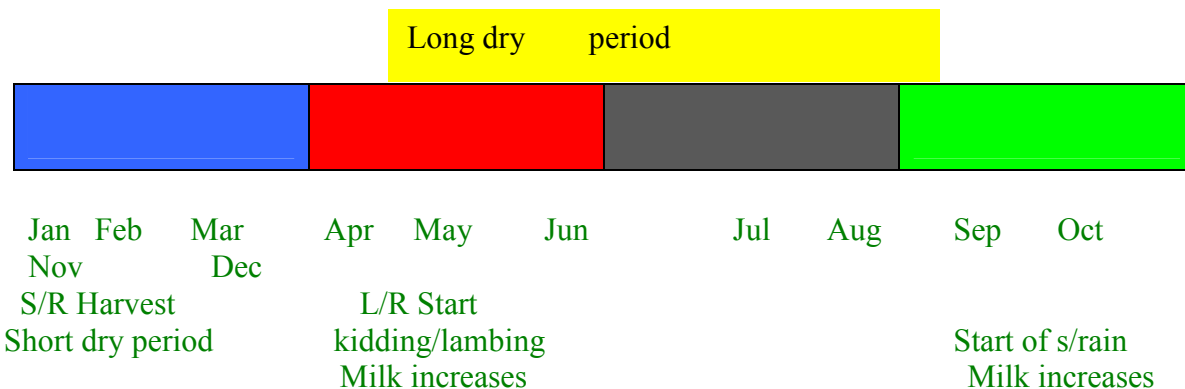
Isiolo district

Warning stages



Livelihood Zone	Warning stage	Trend
Pastoral- all species	Alarm	Deteriorating
Agro pastoral	Alarm	worsening
Casual waged labour	Alarm	worsening
Firewood/Charcoal	Alarm	Deteriorating
District	Alarm	worsening

SEASONAL CALENDAR



Situation overview

- The district did not receive any rainfall during the month. The absence of rainfall was normal compared to previous seasons.
- Quality and quantity of pasture and browse deteriorated further in Nyachis, Kom and Sabarwawa.
- Insecurity, particularly cattle rustling and conflicts over scarce resources, constrained access to forage.
- Availability of water declined further compared to previous months as shallow wells deepened, while concentration around reserve boreholes of Yamicha and Duma was high.
- Livestock body weight dropped drastically and shoats were starving in Oldonyiro, Kipsing and Hawaye. This pushed the cumulative mortality rate for shoats to 6.2 per cent .
- Prevalent livestock diseases included black quarter, contagious caprine pleuropneumonia, foot and mouth and lumpy skin disease. However, spread was checked by vaccination.
- The nutritional status of children below five years deteriorated, with the percentage of those rated as being at the risk of malnutrition rising to 15 from 12 in August. The worsening trends were observed in all sampled areas Merti and Kinna were worst affected at 32 per cent and 18 per cent respectively.
- The household food security worsened during the month mostly due to livestock diseases and increased insecurity.
- District drought status is alarm and deteriorating towards emergency.

Current interventions

Non-food interventions

- Distribution of drugs and re-treatment of mosquito nets in local dispensaries.
- Mass vaccination against Pestis des Petit Ruminants (PPR) in sheep and goats in Merti division.
- Water trucking in Dadachalafe in Cherab division and Badana in Sericho Division by Arid Lands Resource Management Project.

Previous DSG meeting and recommendations

The last DSG meeting was held on September 29, 2008. Members adapted long rain assessment report and recommended that:

- Food aid to be distributed in West Location of Central division.
- KFSSG to review the indicated total in Kinna division i.e. 30 per cent of 8,937 people is 2,681 persons and not 746.
- Members strongly recommended food allocation to all divisions to be increased.

Recommendations to DSG and KFSSG

- Vaccination exercise against black quarter, contagious caprine pleuropneumonia and foot and mouth disease to be carried out in Barambate, Haw aye and Cherab divisions. Action: District Veterinary Officer.

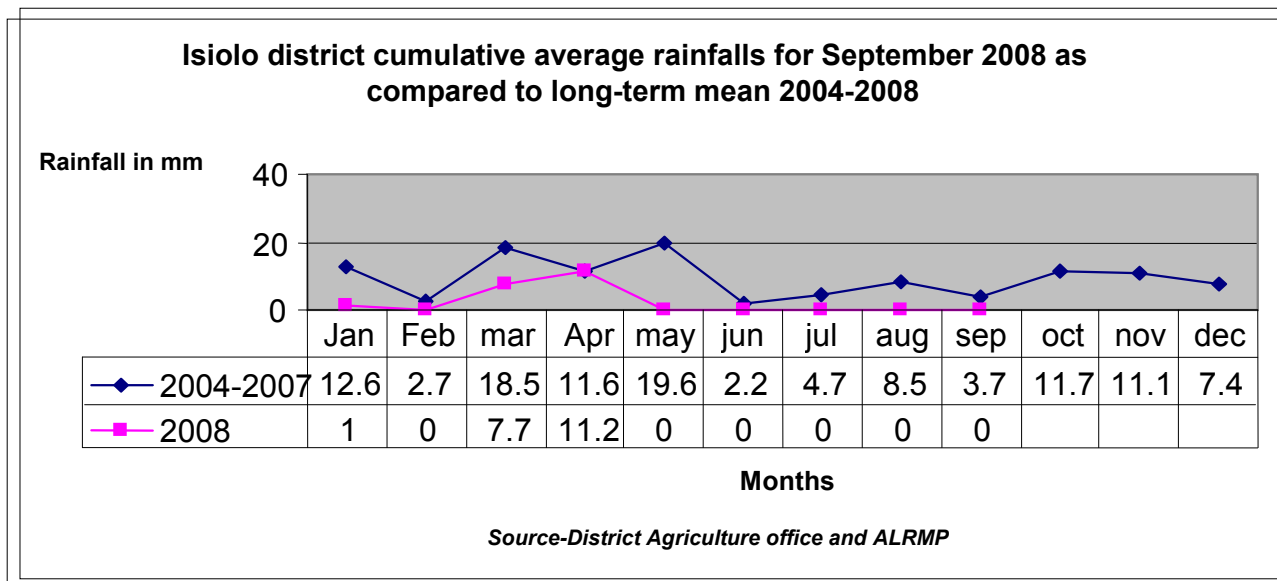
- Peace building initiatives to be strengthened in Kom and Biliqo areas, while those displaced should be assisted to return home. Action: Provincial Administration/DSG.

1.0 Environmental indicators (stability)

1.1 Rainfall

- No rainfall was received over the reporting period.
- The absence of rainfall was normal compared to previous seasons.

The graph represents the rainfall pattern for this month compared to long term mean:



1.2 Condition of natural vegetation and pasture

- The quality and quantity of vegetation and pasture deteriorated further in dry season grazing areas.
- Migration was high due to insecurity in Kom Nyachis and Sabarwawa, where 10 persons were killed by raiders from neighboring districts.
- Livestock were concentrated in dry season grazing areas of Yamicha, Duma and Urura.
- Distances between grazing areas and water sources rose to over 20 km in Haw aye and Sericho areas.

1.3 Water sources and availability

1.3.1 Water source in use

- The main sources of water were shallow wells, boreholes and rivers (on small scale).
- Communities using shallow wells in Kipsing, Iresaboru, Haw aye and Machalo experienced lower volumes as the wells got deeper.
- Water stress was severe in Dadachalafe, Dololo dakiye, DadachaBasa and Kipsing.

The table indicates water sources and percentage of households using them compared to normal situation.

Water source	1	2	3	4	Others
% of household depending on the source	25	30	-	40	5
% of household normally depending on the sources	5	35	20	40	-

1-river, 2-boreholes, 3-shallow wells, 4-piped system, others pans, dams

1.4 Emerging issues

- Displacement of people in Kom and Dima Adho due to rising cases of insecurity.

1.5 Implication on food security

- The conflict over natural resources, migration out of grazing reserve areas due to insecurity impacted negatively on household food security.
- Low livestock body weight and subsequent deaths negatively affected the pastoralists' livelihoods.

2.0 Rural economy indicators (Availability of food)

2.1. Livestock production

2.1.1 Livestock body condition

- Livestock body condition deteriorated among all species in all areas due to inadequate pasture, diseases and long trekking distances to pasture.
- Mostly affected were sheep and goats in Kipsings and Hawaye, which were dying due to emaciation as a result of drought.

2.1.2 Livestock diseases

- The livestock diseases reported during the month under review were black quarter, contagious caprine pleuropneumonia, foot and mouth and lumpy skin disease.
- Vaccination and monitoring needs to be strengthened.

2.1.3 Milk production

- Milk production was 39.8 bottles (750ml) during the month.
- This was far below the 51.8 bottles produced last month.
- Production was poor in all areas.

2.2 Crop production

2.2.1 Timeliness and status of crop

Farmers did not plant during the month.

This was normal compared to previous seasons.

2.2.1. Pest and diseases

No crop pests or diseases were reported over the month.

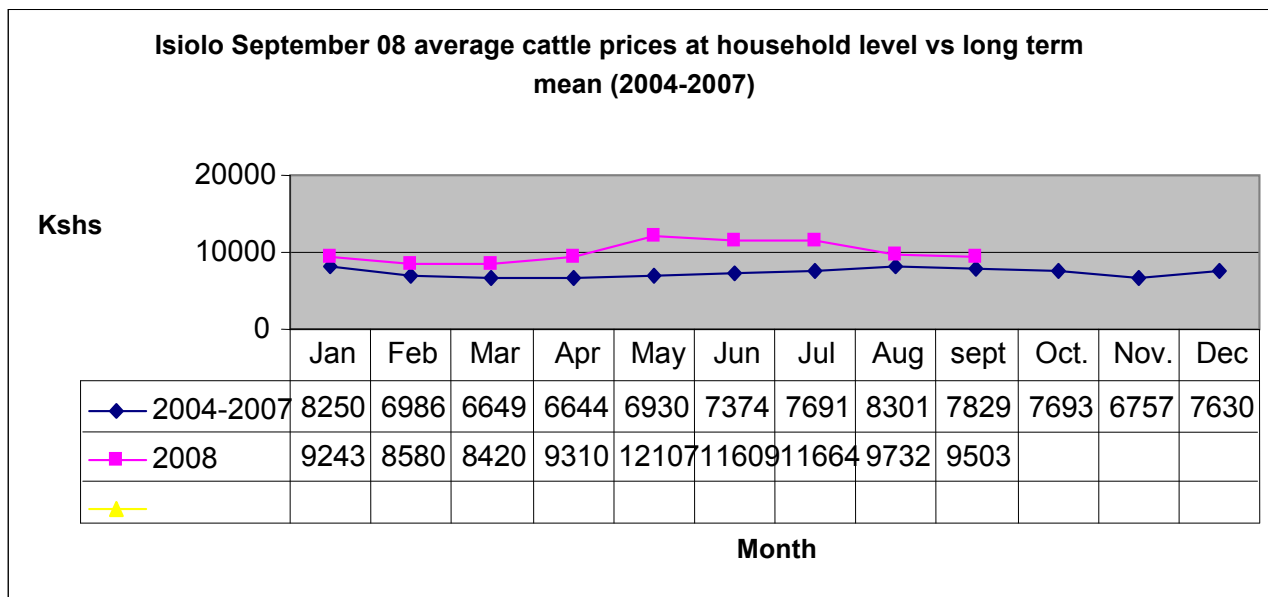
2.2.2. Harvest

There were no harvests in the district during the month.

3.0 Access to food

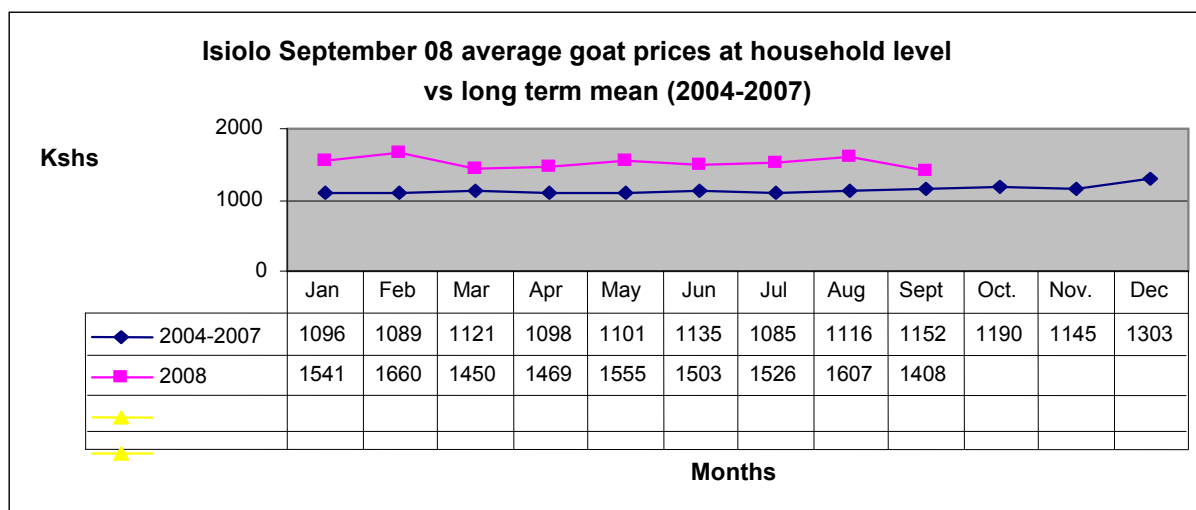
3.1. Livestock marketing

3.1.1 Cattle prices



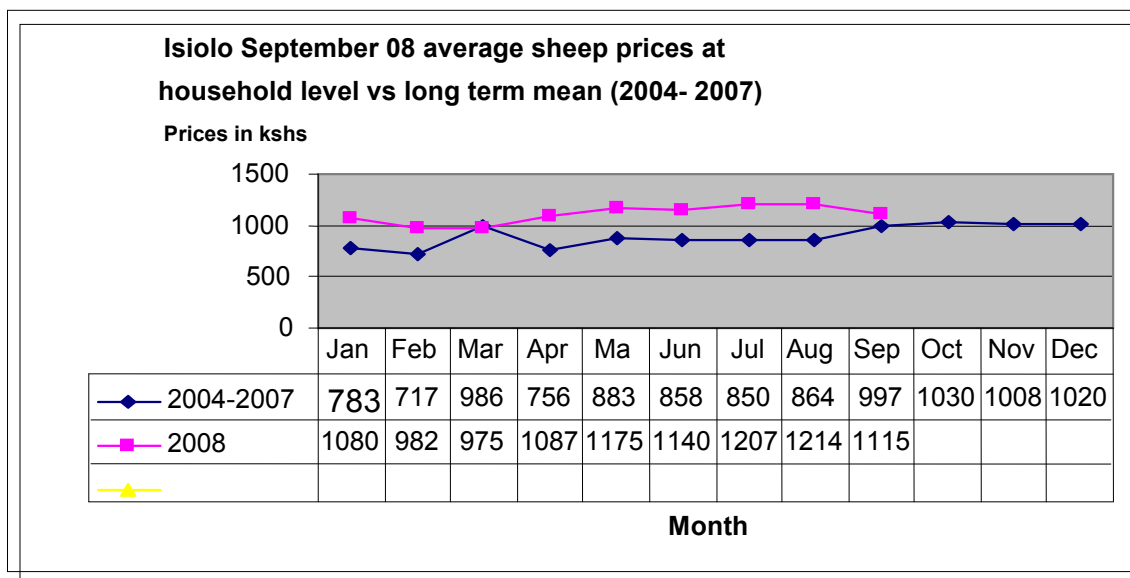
- The average cattle price dropped slightly from Ksh 9,732 in August to Ksh 9,503.
- The price drop was due reduced body weight of cattle.
- Prices were fair in Central at Ksh 12,350.

3.1.2 Goat prices



- The average price of goat stood at Ksh 1,408, down from Ksh 1,607 in August.
- Prices were better in Kinna and Garbatulla divisions at Ksh 1,675 and Ksh 1,700 respectively.
- The price drop was due to low body weight of goats in all areas.

3.1.3 Sheep prices



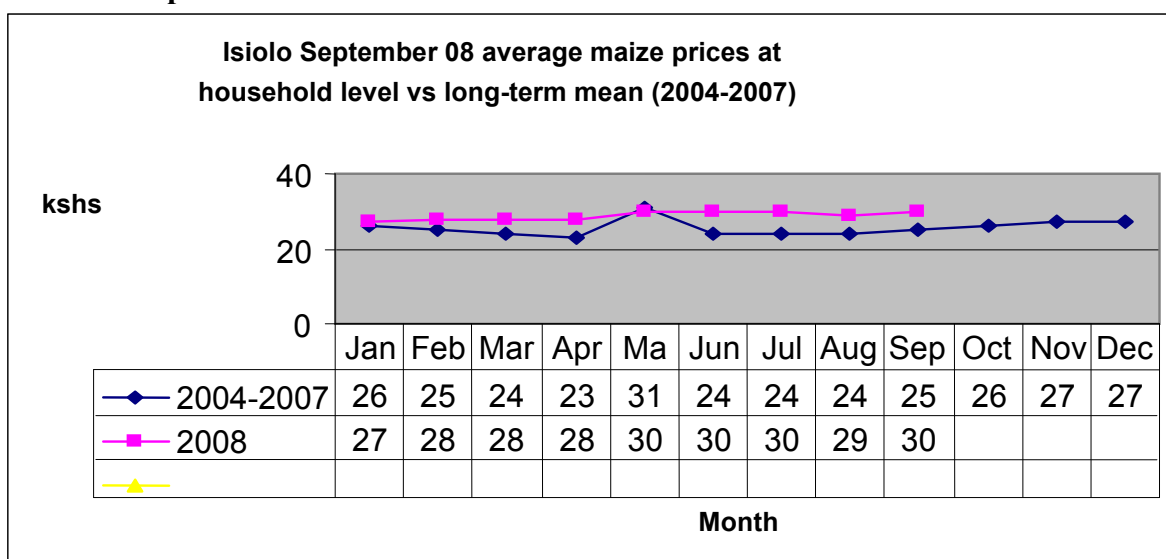
- The average sheep price was Kshs1,115, down from Ksh 1,214 in August.
- Prices were lower in Oldonyiro at Ksh 850 and fair in Central at Ksh1,341 respectively.
- Sheep in Oldonyiro emaciation and dying following prolonged drought.

3.1.4.1. Camel prices

- The average price of camels was Ksh 17,000 for mature females (4 to 5 years).
- The prices fell compared to Ksh 18,000 recorded in August.

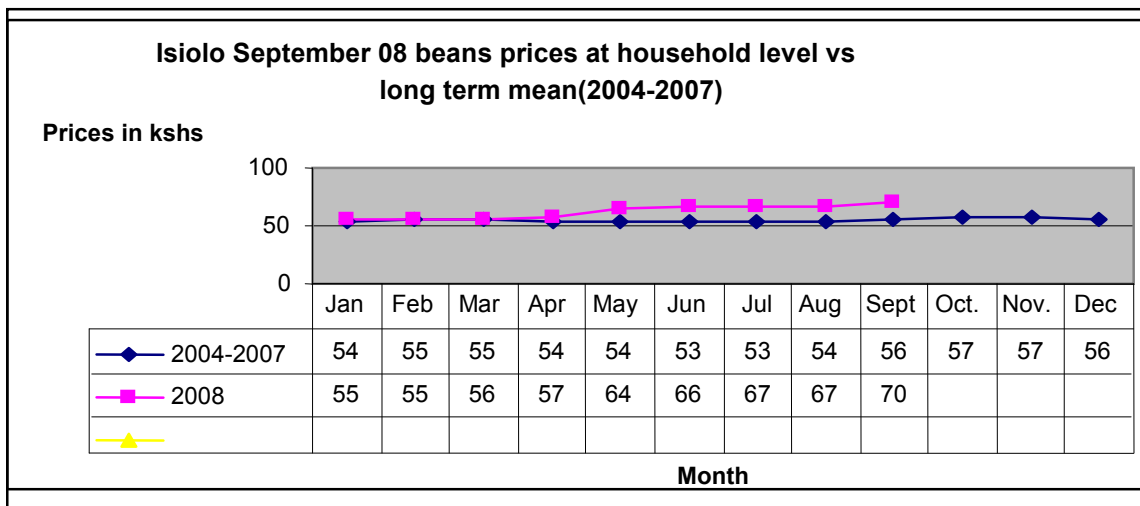
3.2 Crop prices

3.2.1. Maize prices



- The average maize prices increased slightly to Ksh 30 per kilo from Ksh 29 in August.
- The increase was attributed to shortage in the market.
- Prices were higher in outside centres such as Sericho, Merti and in dry season grazing areas, where livestock was concentrated.

3.2.2 Beans prices



- The Average price of beans rose to Ksh 70 per kilo from Ksh 67 in August.
- This represented a 4.4 per cent increase.
- Prices were higher in Merti, Garbatulla, and Sericho, where a kilogram traded at Ksh 80.
- Compared to the long-term mean, the prices were higher by 25 per cent.

3.3 Income

3.3.1. Crop income

- Households did not earn any income from crop during the month.

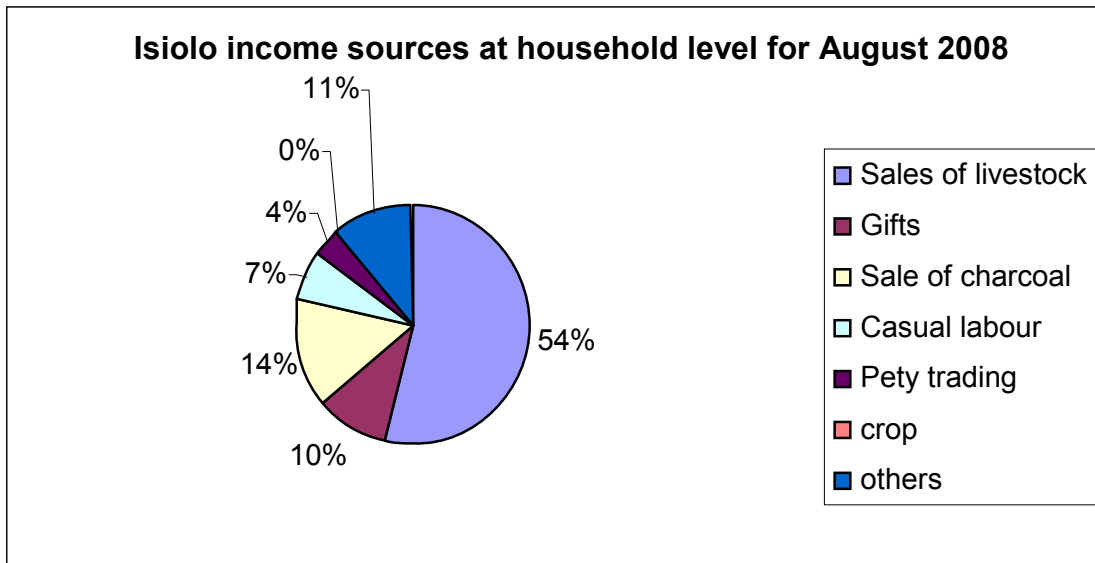
3.3.2. Livestock income

- Income earned from sale of livestock represented 54 per cent of the total income.
- This was a 4 per cent increase from last months 50 per cent.

3.3.3. Other income

- Households earned other income from sale of charcoal (14 per cent), casual labour (6.9 per cent), petty trade (4.1) and gift items (10).
- Sale of charcoal increased by 14 per cent, while casual labour rose by 1.5 and petty trade dropped by 2.8 compared to last month.

The chart represents Isiolo income sources at household level for September, 2008.

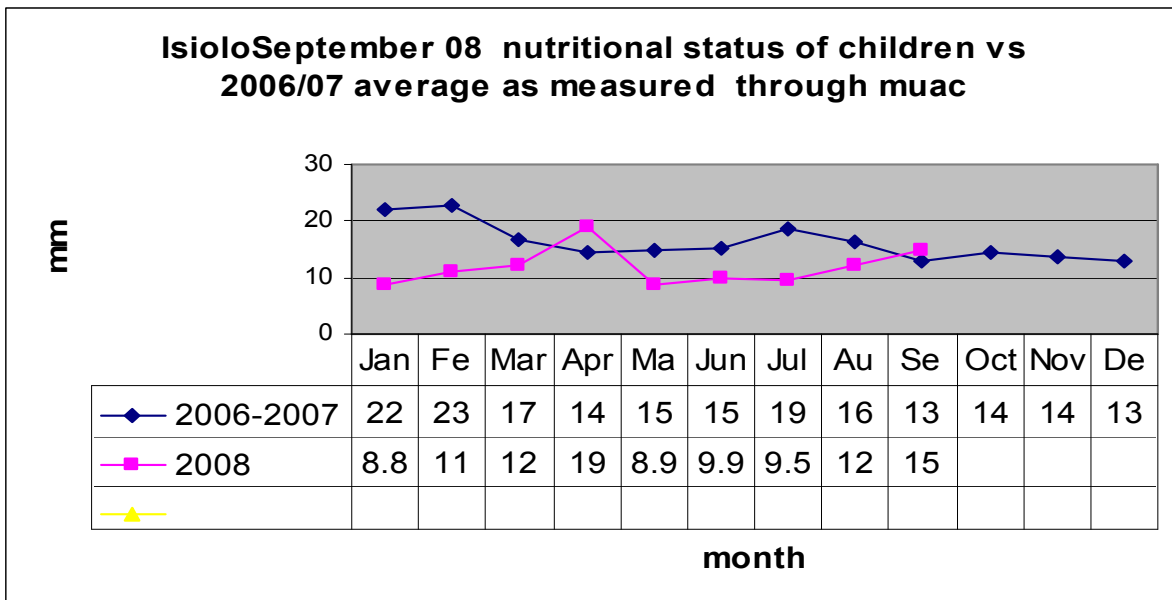


3.4 Implication on food security

The food security situation worsened due to reduced livestock prices against soaring cereal prices.

4.0 Utilisation of food (Welfare Indicators)

4.1 Nutrition status



- The nutritional status of children below five years deteriorated, with the percentage of those rated as being at the risk of malnutrition rising to 15 from 12 in August.
- The worsening trends were observed in all sampled areas Merti and Kinna were worst affected at 32 per cent and 18 per cent respectively.

4.2 Flagged areas

Cases of insecurity and conflicts over resources left 10 people dead in Merti division. This impacted negatively on food security in the division.

5.0 Current interventions

5.1 Non-food interventions

- Distribution of drugs and re-treatment of mosquito nets in local dispensaries.
- Mass vaccination against Pestis des Petit Ruminants (PPR) in sheep and goats in Merti division.
- Water trucking in Dadachalafe in Cherab division and Badana in Sericho Division by Arid Lands Resource Management Project.

6.0 Recommendations

- Relief food distribution in West Location of Central division.
- Increase food allocations to all divisions.
- Vaccination against black quarter, contagious caprine pleuropneumonia and foot and mouth disease to be carried out in Barambate, Haw aye and Cherab divisions. Action: District Veterinary Officer.
- Peace building initiatives to be strengthened in Kom and Biliqo areas, while those displaced should be assisted to return home. Action: Provincial Administration/DSG.