

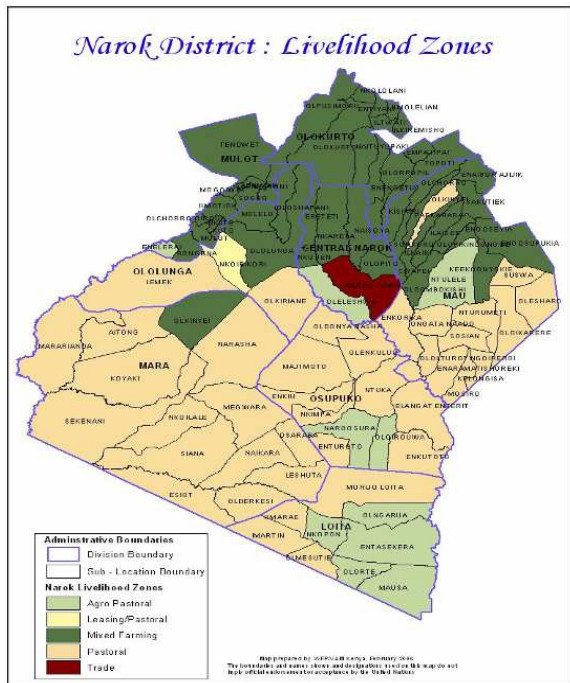


**OFFICE OF THE PRIME MINISTER
MINISTRY OF STATE FOR THE DEVELOPMENT OF NORTHERN KENYA AND OTHER ARID LANDS
ARID LANDS RESOURCE MANAGEMENT PROJECT II**

DROUGHT MONTHLY BULLETIN, SEPTEMBER 2008

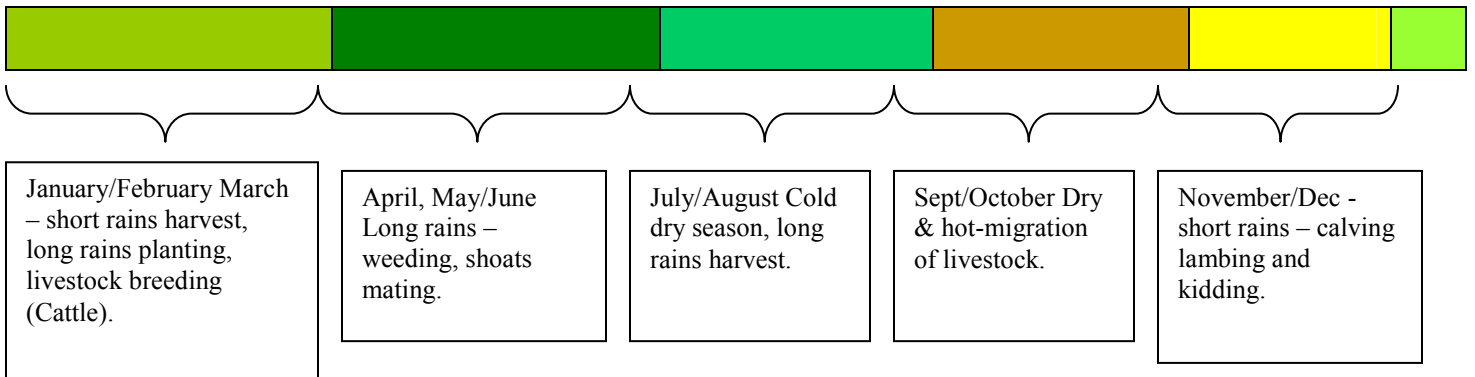
Narok District

Warning Stages



Livelihood Zone	Warning Stage	Trend
Agro Pastoral Entasekera, Naroosura, Suswa	Alarm	Worsening
Mixed Farming Nairragi-Enkare, Mulot	Alert	No Change
Pastoral Olmesutie, Ntuka, Mosiro, Koyiaki, Oletukat	Alarm	Worsening
Trade Narok Town	Normal	Declining
Leasing/ Pastoral Lemek, Ololulunga, Ntulele	Alert	Declining
Pastoral Tourism Koyiaki, Siana	Alert	No Change

TIMELINE ACTIVITIES



Situation overview

- 50mm of rainfall was recorded in the district during the month. The upper highlands received light and scattered rains during the period under review, while parts of the lower rangelands including Mara, Loita and Parts of Lower Mau and Central divisions received light showers with spatial distribution.
- Quality and quantity of pasture and browse declined in all the divisions except for pockets of relatively good standing hay in Mara and Loita. However, this could not be accessed due to heavy tsetse infestation.
- Herders relying on crop residue in Ololulunga and Central divisions had to move to the forest areas after the straw and the maize stalks got depleted.
- Livestock body condition continued to deteriorate for all species, especially for the larger stock.
- Access to water for livestock and domestic use continued to decline in all the divisions as the light showers received had insignificant impact on volumes in catchment areas.
- The main sources of water during the month remained major rivers, dams and springs/wells.
- A *Peste des petits ruminants* (PPR) outbreak was reported in Mara, Loita and Osupuko division. There were fears that the disease spread could be fuelled through markets and uncontrolled movement of herders in search of pasture and water.
- Milk production was below normal due to poor livestock body conditions and the low calving and kidding rates in all divisions.
- Livestock prices continued to drop compared to the previous month, except for sheep. The average prices were Ksh 8,500.00 for cattle, Ksh 1,200 for goats and Ksh1,600 for sheep compared to Ksh10,000, Ksh1,300 and Ksh1,400 respectively in August. The prices are expected to drop as body conditions deteriorate further due to unfavourable weather.
- Food prices remained within the previous months range. Maize traded at Ksh 49, beans Ksh 70 and posho Ksh41 per kilo compared to Ksh40, Ksh 64 and Ksh44 last month.
- The nutritional status of children under five years continued to deteriorate during the month, with the percentage of those rated as being at the risk of malnutrition (based on MUAC>135mm measurement) rising to 22.3 from 21 in August.
- This was mainly attributed to the declining food security situation in the district, and the low levels of attention as mothers spend longer hours searching for food and water.

Current interventions

- Development and protection of Kimogoro springs in Mulot division.
- Construction of Ilpopong' water pan, Olkiriaine water pan.
- Support to Agriculture and livestock sector.
 - Bee keeping: provision of hives to groups from Central, Osupuko, Ololulung'a and Mara divisions and training of the beneficiaries.
 - Support to livestock upgrading by providing dairy goats to pastoralists.
 - Community trainings in environmental conservation, animal traction, and utilisation of drought tolerant crops.
 - Training WRUAs in Mulot and Loita divisions.

- Training District Peace Committees.
- Drilling of more boreholes by MoH, Operation Eye Sight International in a district-wide trachoma eradication programme.
- World Vision, World Concern, APHIAII and other institutions are supplementing the GoK activities in provision of water and capacity building support in various divisions.

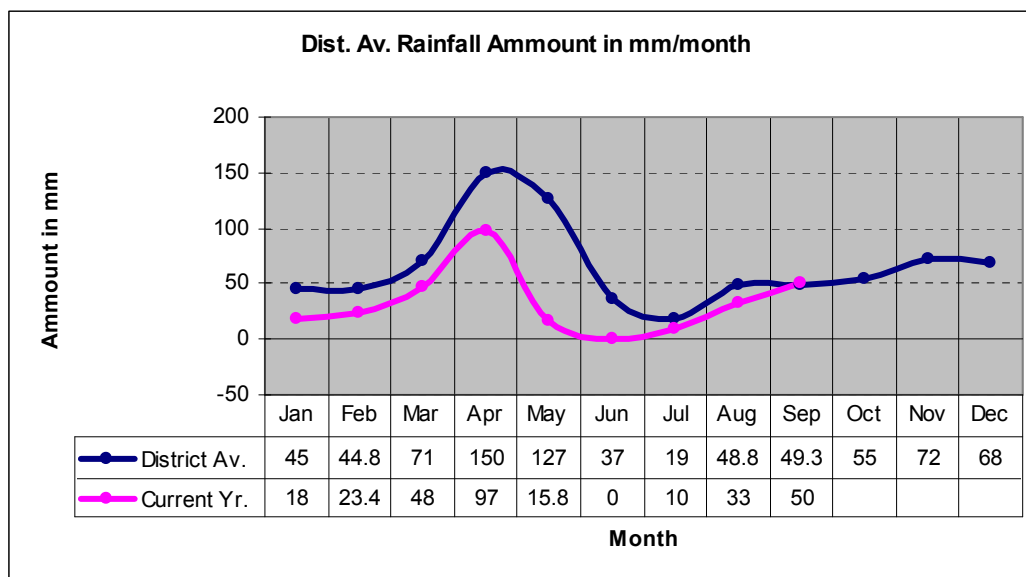
Recommendations to DSG and KFSSG

- Need to support farmers with seeds, especially quick maturing crops in readiness for the short rains season expected to start in October.
- More capacity building activities to support communities efforts in developing effective coping strategies during drought.
- Continuous disease surveillance, especially in view of the nation-wide PPR outbreak to contain disease outbreaks in areas with high livestock concentration.
- Relief food distribution to affected households in rural areas other than the internally displaced especially in Osupuko, lower Mau, parts of Mara, Central and Loita divisions.
- Scale up environmental conservation activities to control the destruction/degradation resulting from drought and related activities.

1.0 Environmental indicators (stability)

1.1 Rainfall

- About 50mm of rainfall was recorded. Seven days of scattered rainfall were recorded in the district, especially in the upper zones of Mau and Olorurto. Parts of Mara and Mulet divisions also received some light showers towards the end of the review period.
- This was normal during this time of the year.



1.2 Condition of natural vegetation and pasture

- Pasture and browse deteriorated both in quality and quantity due to unfavourable weather conditions and the high level of competition between livestock and wildlife.
- Herders who had been benefiting from crops residue had to move to forest areas after exhausting the available straw and maize stalks.

1.3 Water sources and availability

1.3.1 Use of water sources

- Quality and quantity of water was affected by adverse weather conditions.
- Distances to watering points, especially for livestock use, remained the same as last month for most households.
- Competition for water was still high between livestock and wild animals.
- The main sources of water remained mainly major rivers, catchments pools, pans/dams and traditional wells.
- The situation was fast declining due to low precipitation.
- This will also impact negatively to the food security in the households, especially the pastoral and agro pastoral communities.

The table below indicates water sources and percentage of households using them, compared to a normal situation.

Water source	1	2	3	4	Others
% Of h/holds depending on the source	35	45	13	5	2
% Of h/holds normally depending on source	25	50	15	8	2

1. Natural rivers 2. Catchment pools/dams 3. Constructed shallow wells/functional 4. Boreholes (functional)

1.3.2 Average distances (kms) to water sources

- Distances to and from watering points for livestock and domestic use remained the same as last month in both Narok North and South districts.
- The situation is likely to worsen if the prevailing weather conditions persist.
- This impacted negatively on the food security situation in the districts as more time was spent searching for water instead of other than activities, especially for women and the children.

The table below indicates average distances to water sources compared to normal situation

Water sources	1	2	3	4	Others
Average Kms to the source	8	6	5	10	2
Normal Kms to the source	4	5	5	8	2

1. Traditional rivers/wells 2. Catchment pools/dams 3. Constructed shallow wells/functional 4. Boreholes (functional)

2.0 Rural economy indicators

2.1 Livestock production

2.1.1 Livestock body condition

- Livestock body condition continued to decline amongst all species. However, this was more significant among the larger stock.
- The decline was attributed to the declining pastures and water conditions throughout the district.
- The decline also impacted negatively on the food security situation in the districts.

2.1.2 Livestock health

- Apart from the suspected PPR outbreak in Mara Osupuko and Loita divisions, suspected cases CCPP and CBPP were reported in Loita and parts of Mara divisions.
- The diseases were suspected to be spreading to other parts of the district due to uncontrolled movement of livestock through markets and migration.
- However, a vaccination campaign against CBPP was going on by VSF-Germany in Loita and Mara divisions.

2.1.3 Milk production

- Milk production remained low throughout the district due to declining pasture and water conditions and low calving and kidding rates.

2.2 Crop condition

2.2.1 Condition and status of crop production activities

- The harvesting season for both maize and wheat came to an end, with most farmers recording very low yields.
- Most recorded more than 50 per cent losses, especially wheat and maize farmers in both Narok North and South districts.
- The poor yields were due to water related stress and late preparation of farms as a result of the post election violence that preceded the planting season. This was further aggravated by the high costs of agricultural inputs, especially fertilizers.
- This impacted negatively on the food security level both in Narok North and South districts.

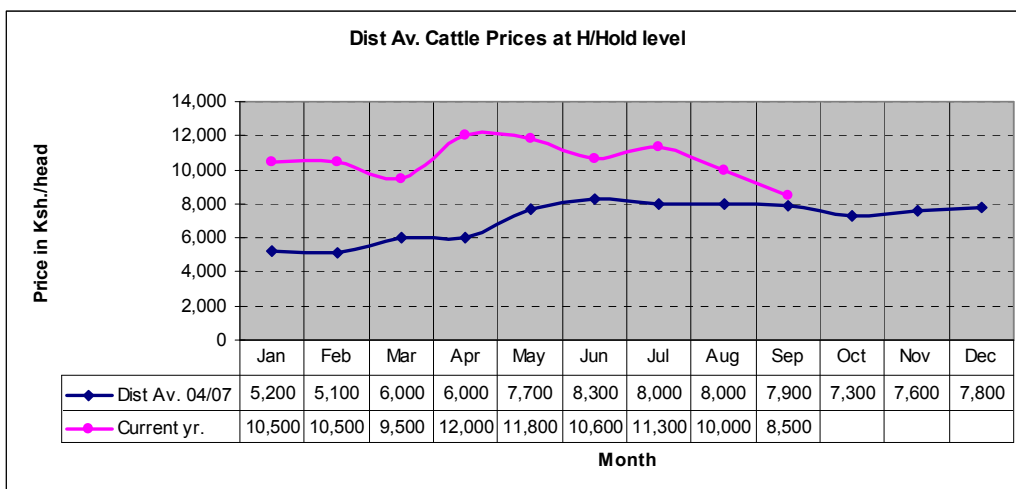
3.0 Access to food

3.1 Livestock marketing

3.1.1 Cattle prices

- Livestock prices dropped compared to the previous month due to increased in markets and deteriorating body condition.
- Average cattle prices fell to Ksh 8,500 from Ksh 10,000 in August.

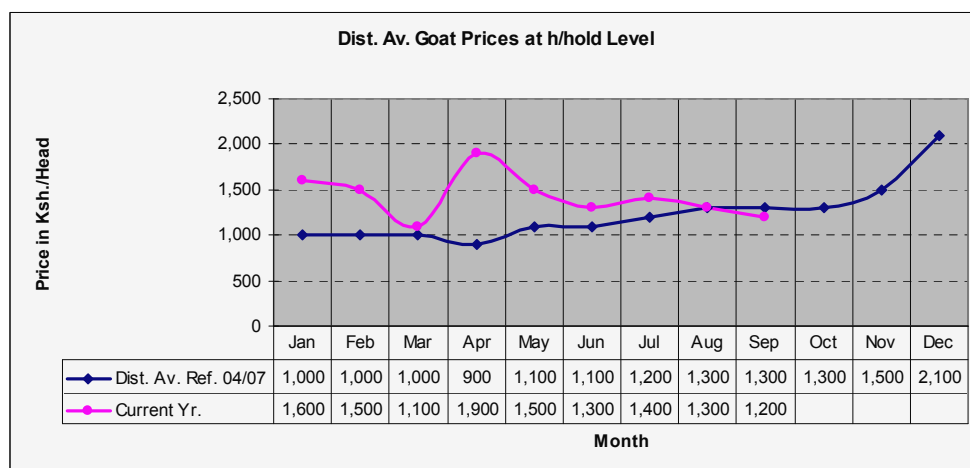
The graph below shows district cattle average prices (in Ksh) at the household level



3.1.2 Goat prices

- Goat prices remained within the previous months range due to deteriorating body condition.
- The average price of goats dropped from Ksh 1,300 in August to Ksh 1,200 .

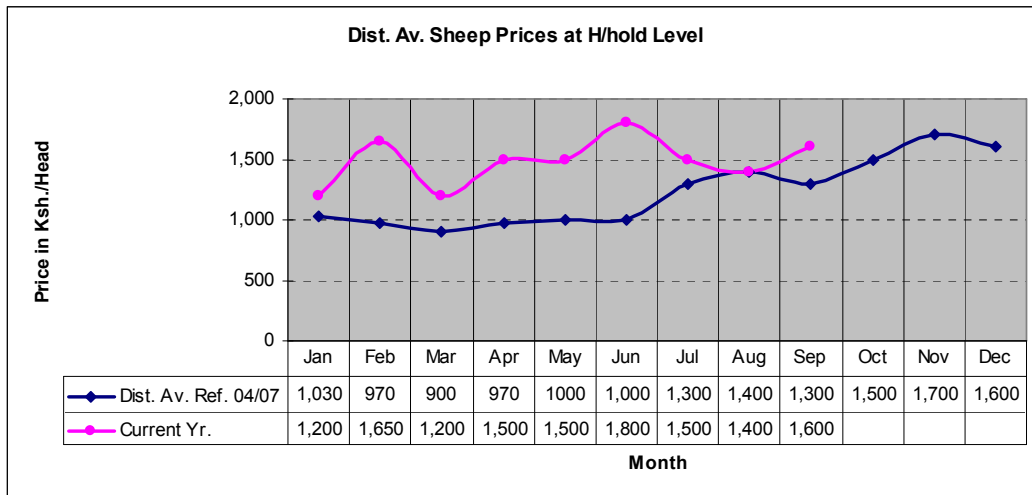
The graph below shows the district average prices of goats at the h/hold level (Ksh.)



3.1.3 Sheep prices

- Sheep prices rose slightly compared to the previous month due to low supply in markets.
- The price rose from Ksh 1,400 in August to Ksh 1,600.

The graph below shows the district average prices for sheep at the household level (Ksh.)

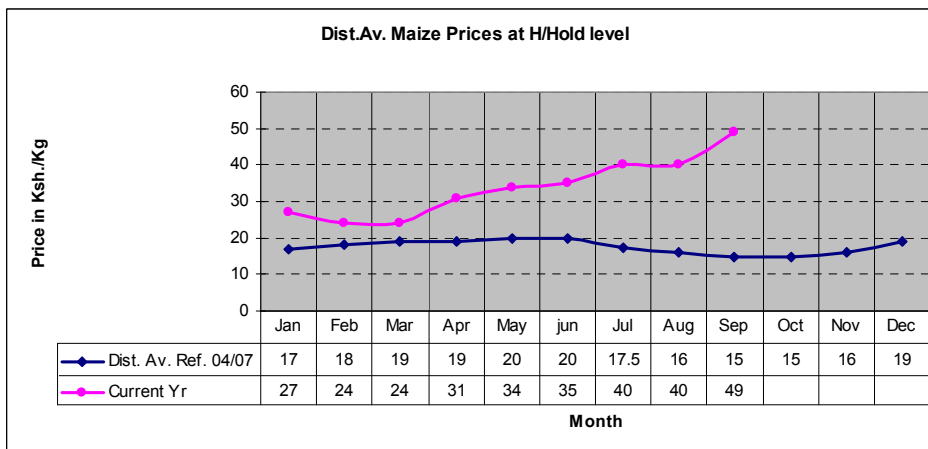


3.2 Crop prices

3.2.1 Maize prices

- Maize prices continued to rise due to fast declining supply of the commodity in the market and low levels at the community stores.
- The price rose from Ksh40 in August to Ksh 49.
- This impacted negatively on food security in the district.

The graph below shows the average district maize prices at the household level (Ksh/Kg)

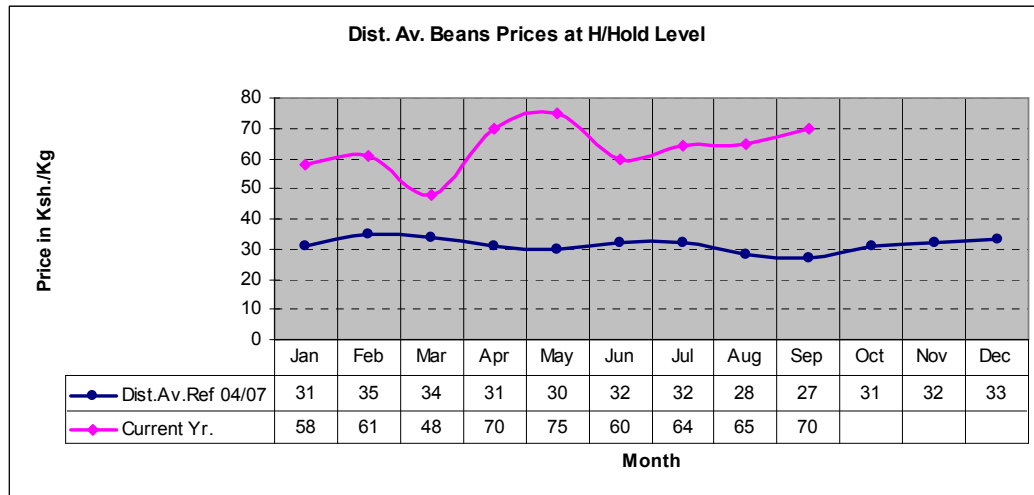


3.2.3 Beans prices

- Average beans prices rose due to the scarcity of the produce in the market and low levels of production at the household level.

- Most households that had harvested some bean crop exhausted stocks through selling as a result of attractive market prices.
- This impacted negatively on the food security situation in the district.

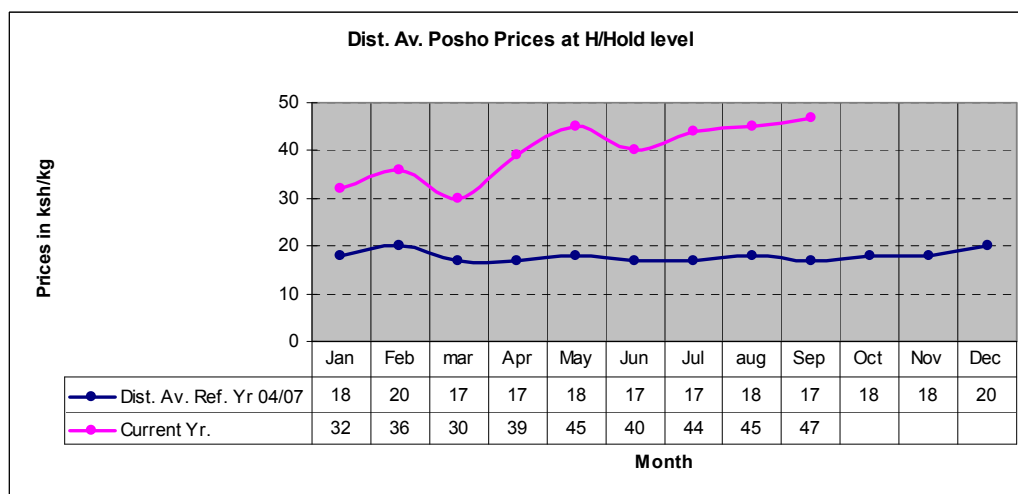
The graph below shows district average beans prices at the household level (Ksh /kg)



3.2.4 Posho prices

- Posho prices went up compared to the previous month due to increasing demand as most households rely on either maize or posho for their meals.
- The scarcity of maize in stores also contributed to the high prices.
- This impacted negatively on the food security situation in the district.

The graph below shows the average prices of posho at the district (Ksh/Kg)

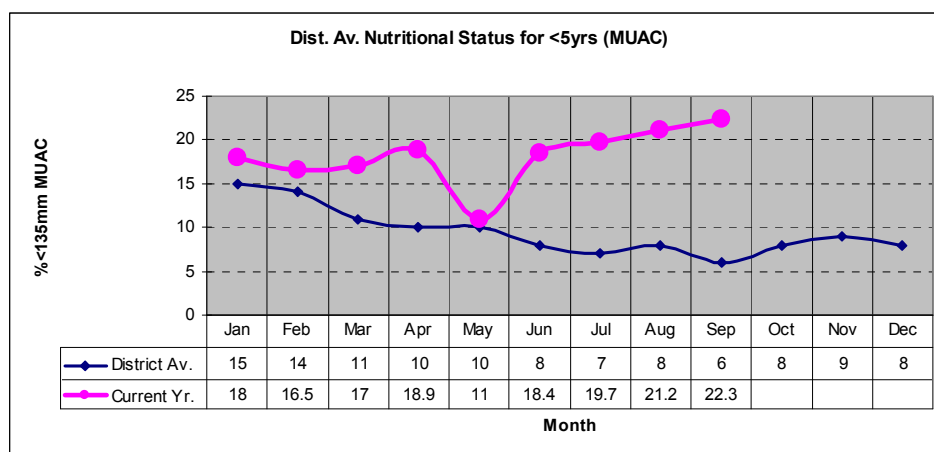


4.0 Utilisation of food (welfare)

4.1 Nutrition status

- The nutritional status of children under five years continued to deteriorate during the month, with the percentage of those rated as being at the risk of malnutrition (based on MUAC>135mm measurement) rising to 22.3 from 21 in August.
- The decline was due to the declining food security situation in the district.
- Mothers were forced to leave their young ones for long hours as they searched for water and engaged in other activities to supplement the household food sources as the men moved away with the livestock.
- The poor availability of milk for the young also contributing to the poor nutrition status.

The graph below shows the MUAC malnutrition rates (% <135mm)



4.2 Human health

- There were no major incidences of human diseases during the review period.

4.3 Insecurity/conflicts

- There were no major conflict issues reported in the district. The situation stabilised both in the North and South districts of Narok.
- The internally displaced persons have since been resettled and only a few that have not received compensation are yet to relocate.

4.4 Migration

- No in-migration was reported in the district during the review period.
- Herders from Suswa, Oletukat and Mosiro in Mau division continued moving towards Naivasha and Gilgil in Nakuru district in search of pasture and water.
- Some herders also moved from Loita and Mara to neighbouring Tanzania.
- This was, however, normal during the time of the year.
- Movement of livestock within the district continued as herders moved livestock away from the wildlife migration corridors, especially in Mara and Osupuko.
- More herders moved from Osupuko and parts of Central divisions to Ololulunga and Upper parts of Central and Mau divisions in search of water and pasture and also to benefit from the wheat straw which was abundant in wheat growing zones following the harvesting season.

- This was normal during this time of the year.

5.0 Current interventions

- Development and protection of Kimogoro springs in Mulot division.
- Construction of Ilpopong' water pan, Olkiriaine water pan.
- Support to Agriculture and livestock sector.
 - Bee keeping: provision of hives to groups from Central, Osupuko, Ololulung'a and Mara divisions and training of the beneficiaries.
 - Support to livestock upgrading by providing dairy goats to pastoralists.
 - Community trainings in environmental conservation, animal traction, and utilisation of drought tolerant crops.
 - Training WRUAs in Mulot and Loita divisions.
 - Training District Peace Committees.
- Drilling of more boreholes by MoH, Operation Eye Sight International in a district-wide trachoma eradication programme.
- World Vision, World Concern, APHIAII and other institutions are supplementing the GoK activities in provision of water and capacity building support in various divisions.

6.0 Recommendations

- Need to support farmers with seeds, especially quick maturing crops in readiness for the short rains season expected to start in October.
- More capacity building activities to support communities efforts in developing effective coping strategies during drought.
- Continuous disease surveillance, especially in view of the nation-wide PPR outbreak to contain disease outbreaks in areas with high livestock concentration.
- Relief food distribution to affected households in rural areas other than the internally displaced especially in Osupuko, lower Mau, parts of Mara, Central and Loita divisions.
- Scale up environmental conservation activities to control the destruction/degradation resulting from drought and related activities.