



**OFFICE OF THE PRIME MINISTER
MINISTRY OF STATE FOR DEVELOPMENT OF NORTHERN KENYA AND OTHER ARID LANDS
ARID LANDS RESOURCE MANAGEMENT PROJECT II**

DROUGHT MONTHLY BULLETIN, SEPTEMBER 2008

Tana River District

Warning Stages



Warning Stage		
Livelihood Zone	Stage	Trend
Mixed Farming Zone	Alert/Alarm	Worsening
Marginal Mixed Farming Zone	Alarm	Worsening
Pastoral Zone	Alarm	Worsening
DISTRICT	Alarm	Worsening

Timeline Activities

<ul style="list-style-type: none"> Milk yield drops Livestock move towards dry seasons grazing areas 			<ul style="list-style-type: none"> High milk yield Livestock move towards the traditional wet season grazing areas. High Calving and lambing rates. 			<ul style="list-style-type: none"> Low milk availability Livestock move towards the fall back dry seasons grazing areas (riverine and delta) 			<ul style="list-style-type: none"> High Milk yield Livestock move back to the traditional wet season grazing areas. Calving rates increases 		
Short dry spell			Long rains			Long dry spell			Short rains		
Jan	Feb	Mar	Apr	May	Jun	Jul	Aug	Sept	Oct	Nov	Dec
↓ Short rains harvest			↘ ↙ Planting/weeding			↘ ↙ Long rains harvest			↘ ↙ Planting/Weeding		

Situation overview

- The rains recorded the previous month subsided, with only erratic showers recorded in the coastal areas of the mixed farming zone including Kipini (31mm) and Garsen (30mm). The marginal mixed farming and pastoral areas however remained very dry and temperatures rose to between 29°C and 32°C.
- Availability of water in the hinterland deteriorated drastically as most pans/dams dried up, while water levels in the traditional river wells deepened tremendously and with very little recharge.
- The situation was equally bad in the riverine after River Tana formed numerous diversions (brooks) off the main course along the delta, depriving the original course of all its waters. This left an estimated population of more than 30,000 people living downstream facing acute water shortage as the river in the areas is completely dry.
- The condition of natural vegetation also continued to deteriorate in all the livelihood zones, with the only available pasture being in form of dry hay, while large trees shed their leaves.
- Though still rated fair, the livestock body and health conditions started deteriorating.
- Cases of Peste des petits ruminants (PPR) were reported in Bangale, Bura, Madogo, Galole and Wenje, while CCPP remained endemic in the district.
- No significant change was noted in the prices of livestock compared to last month.
- Milk production and consumption at the household level declined while price of milk went up compared to the last reporting period.
- There was a general improvement in the nutritional status of children below five during the month, with the percentage of those rated as being at risk of malnutrition (based on the MUAC <135mm measurement) dropped to 11.3 from 13.5 in August. The rate was lower than the long term seasonal mean of 15.77 observed during the period 2003 – 2007.
- Human/wildlife conflicts in terms of livestock predation and crop destruction continued to be reported in the district.
- Though no outstanding incidences of insecurity were reported, harmony had not been restored between the Orma and Wardei as each community lived in isolation and there was restricted sharing of range resources.

Current interventions

Non-food interventions

- Rehabilitation of both Bura and Hola irrigation schemes.
- Water trucking to the most affected pastoralist-dominated hinterland areas and Tana Delta, where the river completely dried up.
- Conflict management and peace building initiatives both in Tana River and Tana Delta districts.
- Immunisation campaigns and outreach programmes.
- Food production by use of appropriate farming technologies such as drip irrigation and water harvesting.
- Range rehabilitation and reseeded programmes.
- Livestock breed improvement programmes.

Food aid

- Based on the long rains assessment, the KFSSG recommended continuity of the EMOP in Bangale, Madogo, Bura, Galole and Wenje upscaling the number of beneficiaries to 41,579 from 37,457.
- School-feeding programme in all primary schools.
- Supplementary and therapeutic feeding programmes in hospitals and outreach programmes.
- General food distribution to vulnerable families by the GOK.

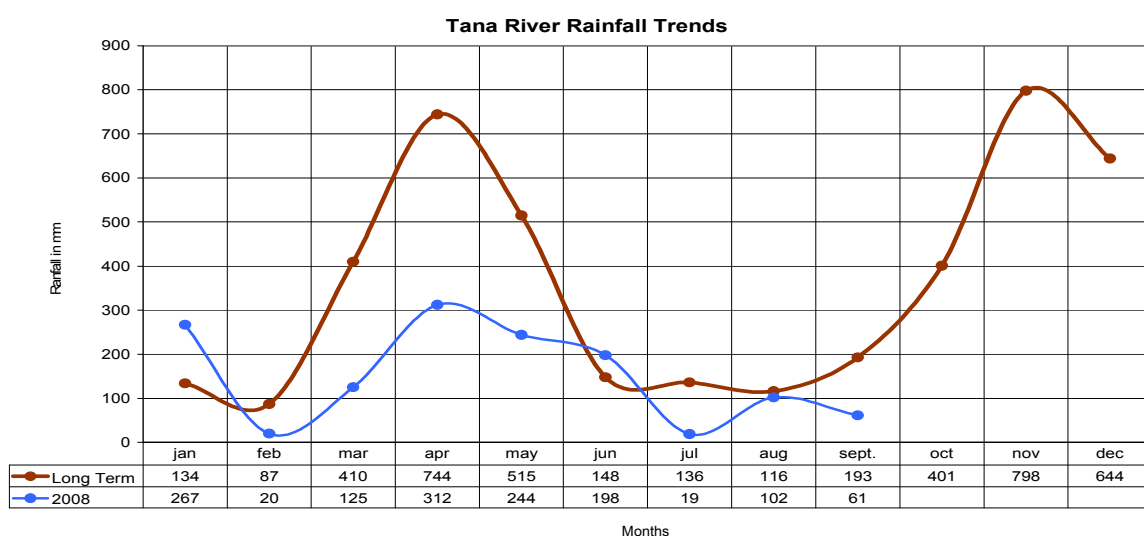
Recommendations to DSG and KFSSG

- Need to critically address the issues of brooks and river bank management in an effort to save the large population living downstream in the delta from acute water shortages and food insecurity.
- Disease surveillance and vaccination of livestock across the district, especially in those areas where PPR was reported and where CCPP remained endemic.
- Enhanced supplementary and therapeutic feeding, especially in the flagged areas. Control of wildlife to minimise incidences of Human/wildlife conflicts in terms of crop destruction and predation.

1.0 Environmental indicators (stability)

1.1 Rainfall

- The rains recorded the previous month subsided, with only erratic showers recorded in the coastal areas of the mixed farming zone including Kipini (31mm) and Garsen (30mm).
- The marginal mixed farming and pastoral areas, however, remained very dry.
- Temperatures rose to between 29°C and 32°C.

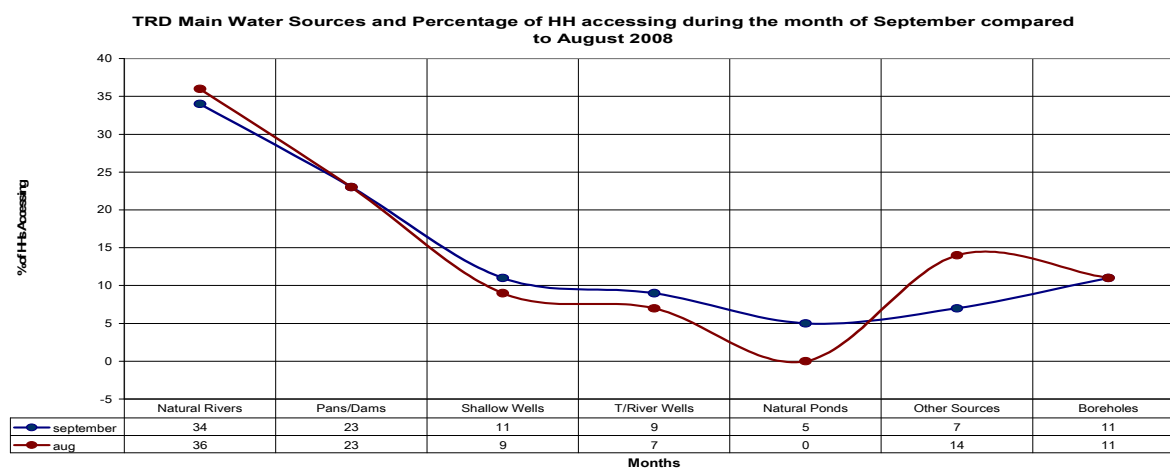


1.2 Condition of natural vegetation and pasture

- The condition of natural vegetation continued to deteriorate in all livelihood zones and most of the available pasture was reported to be in form of dry hay, while large trees shed leaves.
- Distances to grazing areas continued to increase and ranged between 10kms – 20kms.

1.3 Water sources and availability

- The water situation in the hinterland deteriorated drastically as most pans/dams dried up as water levels in the traditional river wells deepened tremendously and with very little recharge.
- The situation was equally pathetic in the riverine as the water levels in River Tana became too low. The river created numerous diversions (brooks) off the main course along the delta, depriving the original course of all its waters.
- This left an estimated population of more than 30,000 people living downstream facing acute water shortages as the river in the areas dried up completely.



1.4 Emerging issues

1.4.1 Insecurity/conflict /human displacement

- Human/wildlife conflicts in terms of livestock predation and crop destruction continued to be reported in the district.
- Water shortage resulting from the change of course River Tana in Tana Delta affected more than 30,000 people living downstream and institutions such as Tarasaa Secondary, Ngao Girls Secondary and Arap Moi Primary schools.
- The situation is likely to affect the food security situation in the district as crop production in the affected areas may be greatly hampered and increase risk of disease spread.

1.4.2 Migration

- Livestock migration towards the riverine was reported , leading to very high concentration around the existing water sources.

1.5 Implications on food security

- The ongoing climatic conditions are feared to negatively affect the pastoralists' food security situation.

2.0 Rural economy indicators (food availability)

2.1 Livestock production

2.1.1 Livestock body condition

- Though still rated fair, the livestock body and health conditions started deteriorating.
- The deterioration was attributable to depletion of range resources.

2.1.2 Livestock diseases

- The PPR outbreak reported in Bangale, Bura, Madogo, Galole and Wenje forced closure of the livestock markets and transportation of the affected species.
- A vaccination exercise by the veterinary department was ongoing.
- Isolated cases of CCPP were also reported in many parts of district.

2.1.3 Milk production

- Milk production at the household level declined compared to last reporting period.
- This was due to the prevailing climatic conditions, which had a direct bearing on the livestock body conditions.

2.2 Crop production

2.2.1 Timeliness and condition of various crop productions

- The harvest season ended and most farmers were preparing their fields in readiness for the short rains planting season.

2.2.2 Pests and diseases

- No outstanding incidences of pests and diseases were reported.

2.2.3 Harvests

- Some farmers in the marginal mixed farming zone started harvesting mangoes.
- However, the crops are still not fully mature.

2.2.4 Implications on food security

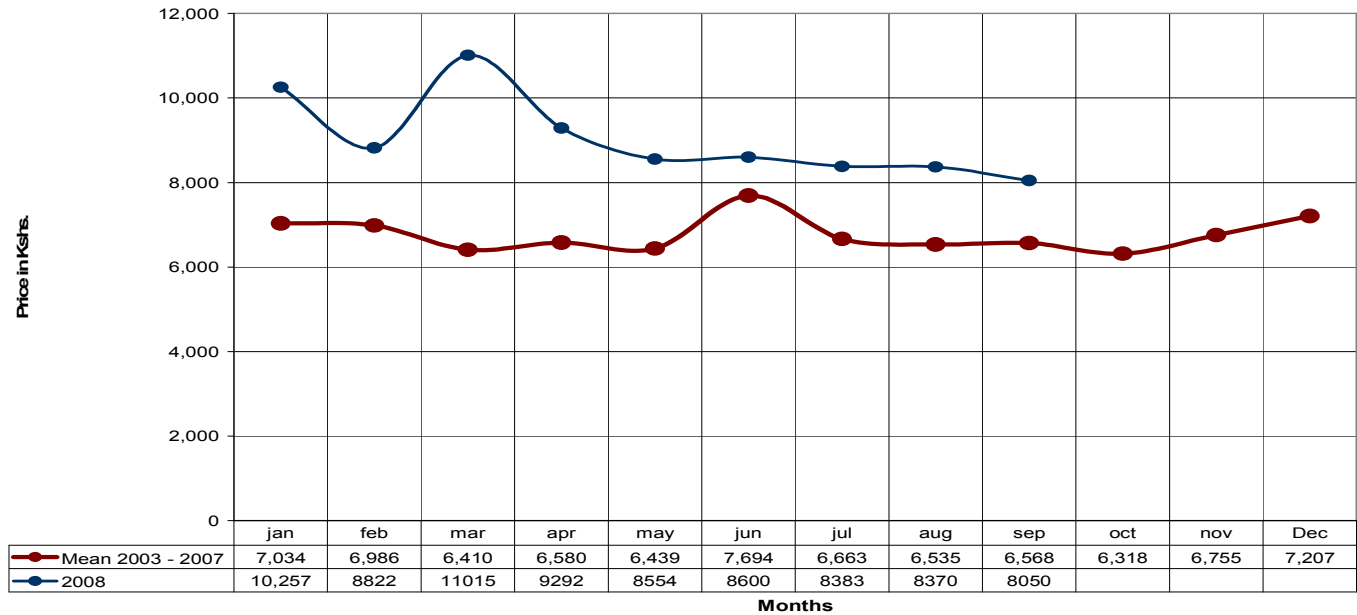
- The food security situation in the mixed farming zone and parts of the marginal mixed farming was rated fair.
- However, stress was anticipated in the pastoral dominated areas owing to the prevailing weather conditions.

3.0 Access to food

3.1 Livestock marketing

3.1.1 Cattle prices

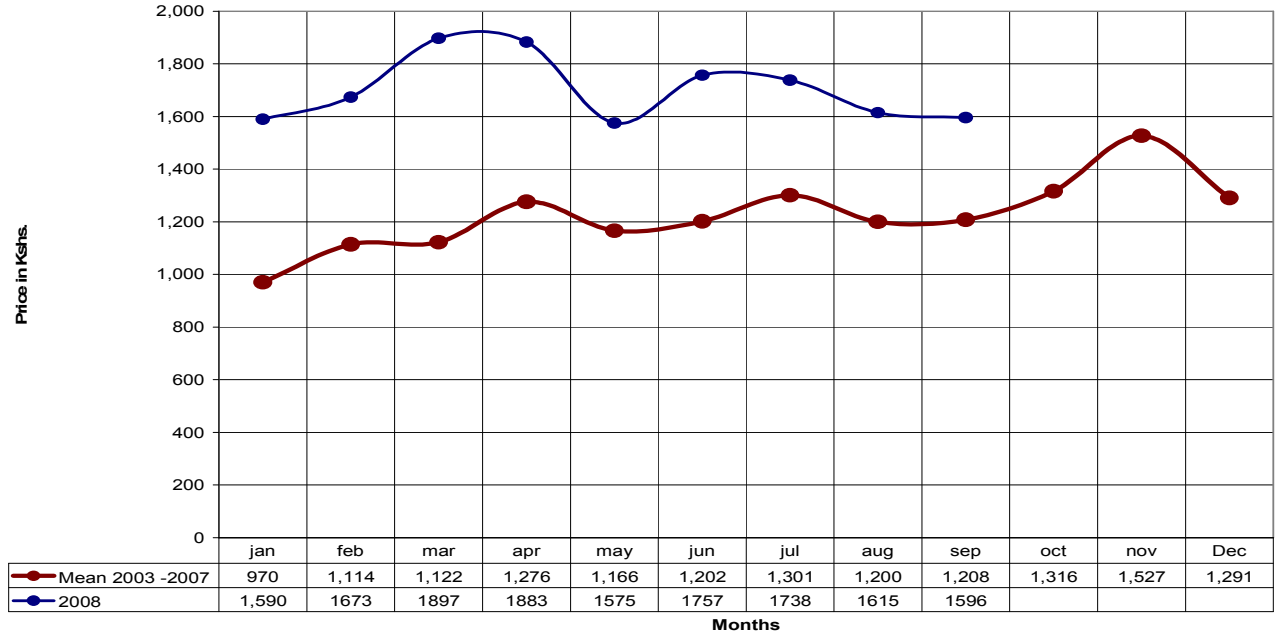
TRD Cattle Prices at HH level for September 2008 compared to avg. Prices for 2003 -2007



- The price of cattle dropped slightly during the month to Ksh8, 050 from Ksh8, 370 of last month
- The price was above the long term seasonal average price of Ksh6, 568 recorded during the period 2003 -2007.
- Drop in prices at the time of year were expected.

3.1.2 Goat prices

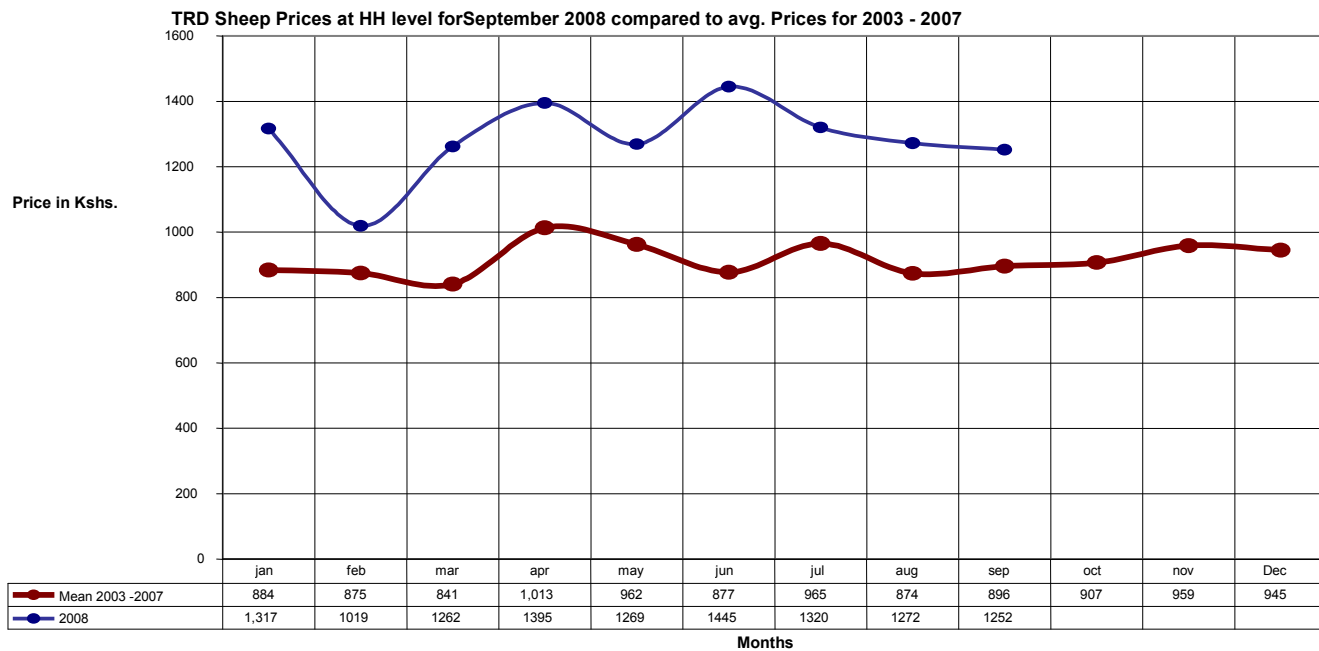
TRD Goats Prices at HH level for September 2008 compared to avg. Prices for 2003 - 2007



- The price of goats dropped to Ksh1,596 from Ksh1,615 in August.

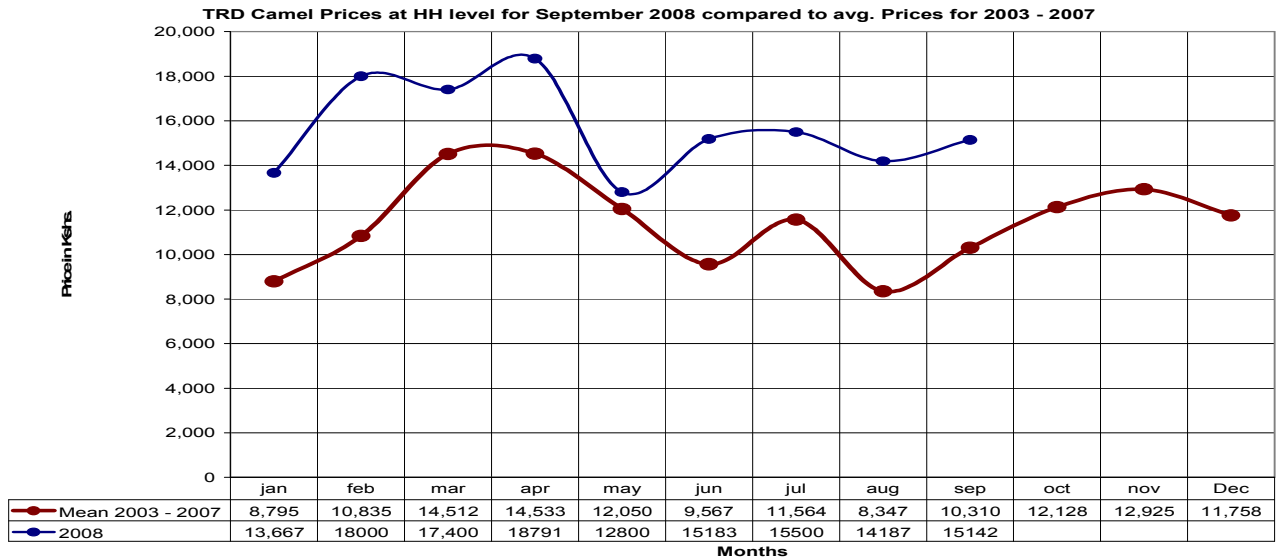
- The price was, however, higher than the long term seasonal average price of Ksh.1, 206 recorded during the period 2003 – 2007.
- Drop in prices of goats was expected and could also have been accelerated by the outbreak of PPR earlier reported.

3.1.3 Sheep prices



- The price of sheep also slightly dropped to Ksh1, 252 from Ksh1, 272 in August.
- The price was, however, still above the seasonal average price of Ksh896 observed during the period 2003 – 2007.

3.1.4 Camel prices



- The price of camels slightly stabilised, with an average price of Ksh15, 142 compared to Ksh14, 187 the previous month.
- The prices were more favourable than the long term seasonal average of Ksh8, 347 recorded during the period 2003 – 2007.
- Stable prices may be due to the body conditions of the camels, which was still rated as favourable.

3.1.5 Livestock sales

- There was a general decline in the sales of almost all the other livestock species, except goats whose sales rate was on the rise.
- This could be attributed to the outbreak of PPR reported in the northern parts of the district.

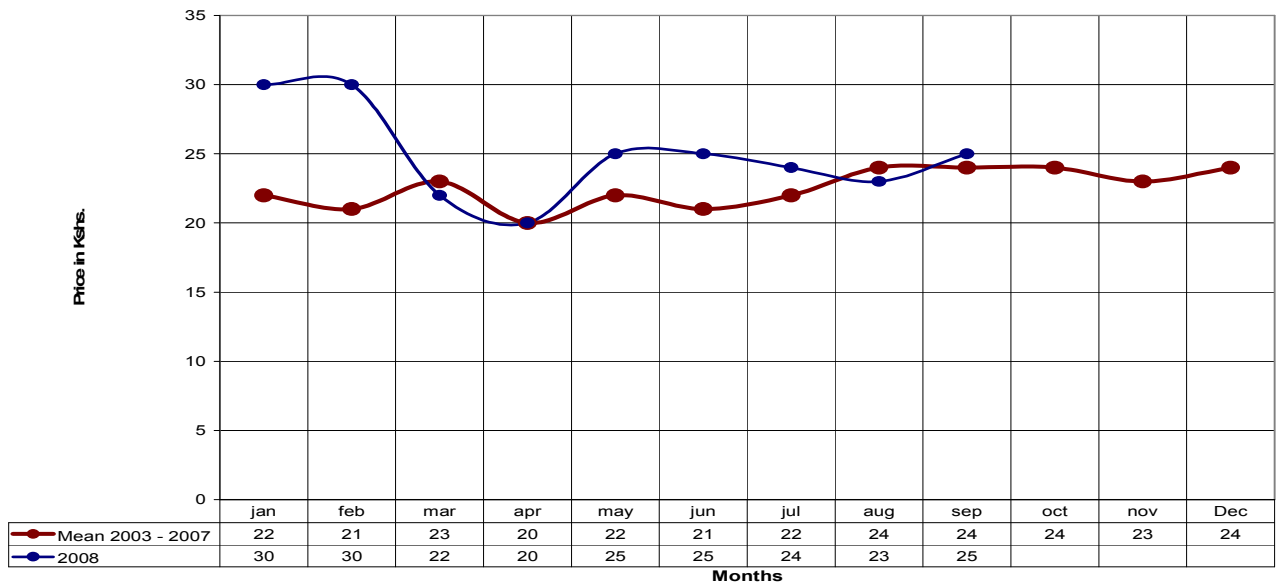
3.1.6 Milk consumption

- Milk consumption declined at the household level compared to the previous month.
- This could be due to depletion of the range resources, which had a direct bearing on the livestock body conditions.

3.2 Crop prices

3.2.1 Maize prices

TRD Maize Prices at HH level for September 2008 compared to avg. Prices for 2003 - 2007



- The price of maize rose to Ksh25 from Ksh the previous month.
- The price was higher than the seasonal average of Ksh.24 recorded during the period 2003 – 2007.
- Rise in the price of maize may be due to the break in relief food supplies at the end of last EMOP phase in August.

3.3 Income

3.3.1 Crop income

- There was no significant change in income derived from the sale of crops.
- The income declined slightly to 7 per cent from last months 8.

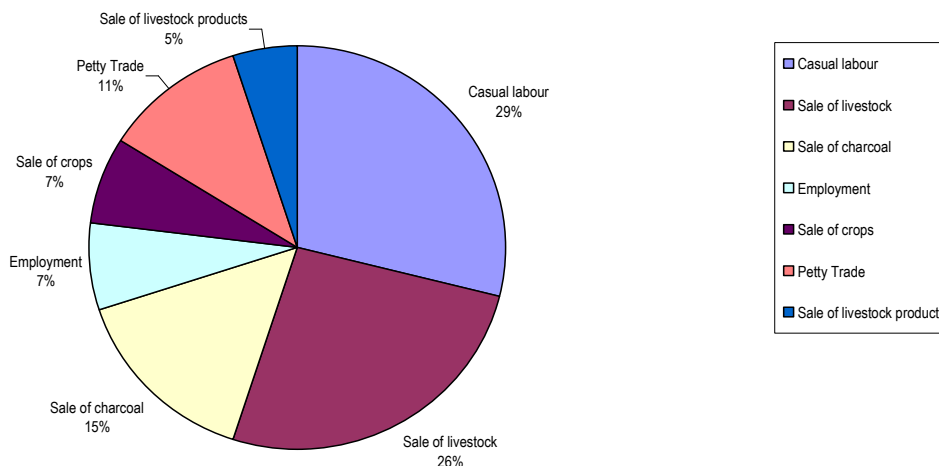
3.3.2 Livestock income

- Income from the sale of livestock and livestock products increased to 31 per cent compared to 22 in August.
- This could be due to the increased sale of livestock earlier reported.

3.3.3 Other income

- Other sources of income at household level included casual labour (29%), sale of charcoal (15%), petty trade (11%), and employment (7%).

TRD Main Sources of Income at HH level for the Month of September 2008



3.3.4 Implications on food security

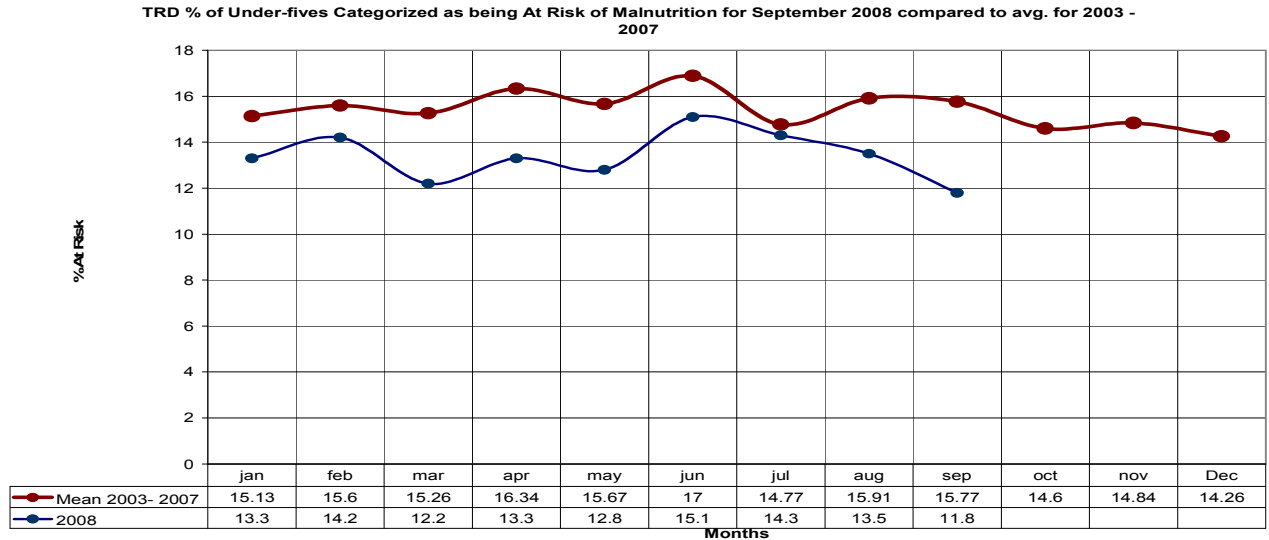
- The food security situation continues to deteriorate as availability of food continues to be constrained.

4.0 Welfare indicators (utilisation of food)

4.1 Nutrition status

- There was a general improvement in the nutritional status of children below five during the month, with the percentage of those rated as being at risk of malnutrition (based on the MUAC <135mm measurement) dropped to 11.3 from 13.5 in August.
- The rate was lower than the long term seasonal mean of 15.77 observed during the period 2003 – 2007.

- The highest rates were reported in Bura at 28.6 per cent, Bangale at 16 per cent and Galole 16.



4.2 Human health

- Malaria remained the leading cause of morbidity in the district.

5.0 Current interventions

5.1 Non-food interventions

- Rehabilitation of both Bura and Hola irrigation schemes.
- Water trucking to the most affected pastoralist-dominated hinterland areas and Tana Delta, where the river completely dried up.
- Conflict management and peace building initiatives both in Tana River and Tana Delta districts.
- Immunisation campaigns and outreach programmes.
- Food production by use of appropriate farming technologies such as drip irrigation and water harvesting.
- Range rehabilitation and reseeding programmes.
- Livestock breed improvement programmes.

Food aid

- Based on the long rains assessment, the KFSSG recommended continuity of the EMOP in Bangale, Madogo, Bura, Galole and Wenje upscaling the number of beneficiaries to 41,579 from 37,457.
- School-feeding programme in all primary schools.
- Supplementary and therapeutic feeding programmes in hospitals and outreach programmes.
- General food distribution to vulnerable families by the GOK.

5.3 Other coping strategies

- Resorting to casual labour.
- Migration from areas with water and pasture stress to less affected areas.
- Charcoal burning.
- Remittances and gifts from relatives.
- Petty trade.

6.0 Recommendations

- Need to critically address the issues of brooks and river bank management in an effort to save the large population living downstream in the delta from acute water shortages and food insecurity. (*Action:KFSSG/District Steering Group/TARDA/Partners/Communities.*)
- Disease surveillance and vaccination of livestock across the district, especially in those areas where PPR was reported and where CCPP remained endemic. (*Action: DVO/District Steering Group/Partners/Communities.*)
- Enhanced supplementary and therapeutic feeding, especially in the flagged areas. (*Action:MOH/District Steering Group/Partners/Communities*)
- Control of wildlife to minimise incidences of Human/wildlife conflicts in terms of crop destruction and predation. (*Action: KWS/District Steering Group/Partners/Communities.*)