

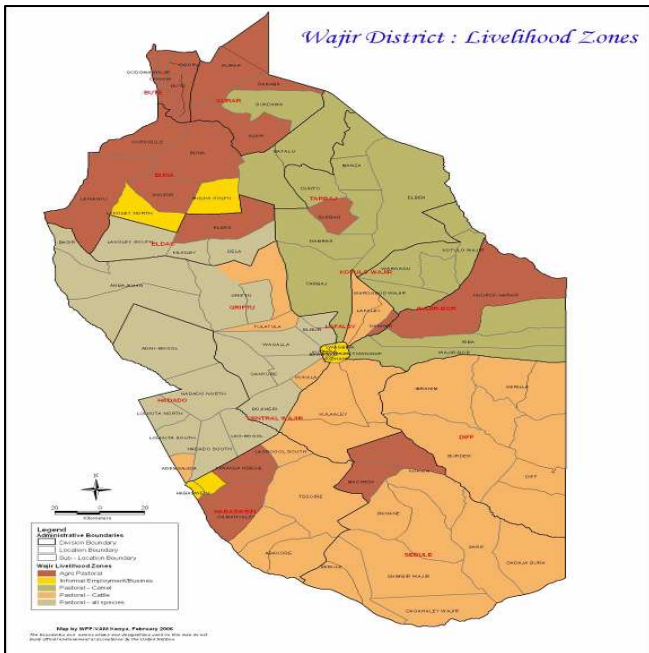


**OFFICE OF THE PRIME MINISTER
MINISTRY OF STATE FOR DEVELOPMENT OF NORTHERN KENYA AND OTHER ARID LANDS
ARID LANDS RESOURCE MANAGEMENT PROJECT II**

DROUGHT MONTHLY BULLETIN, SEPTEMBER 2008

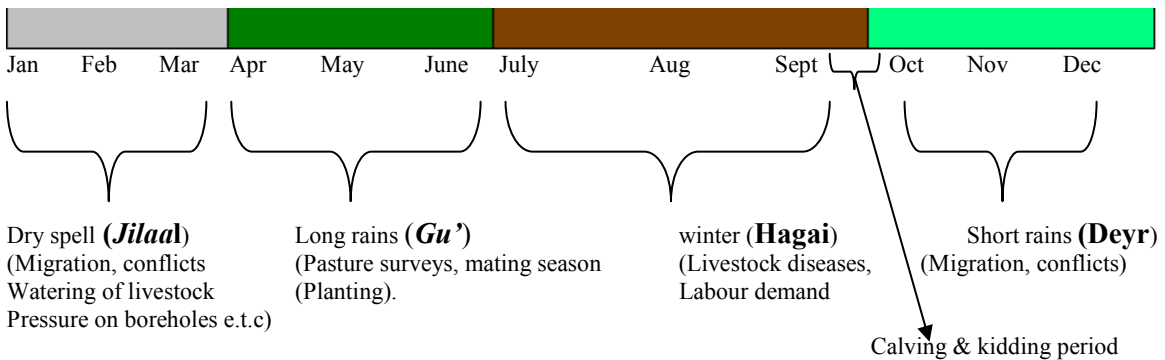
Wajir District

Warning Stages



LIVELIHOOD ZONE	WARNING STAGE	TREND
Pastoral – All Species	Alarm	Worsening
Pastoral – Cattle	Alarm	Worsening
Pastoral – Camel	Alarm	Worsening
Agro – Pastoral	Alert	Worsening
Informal	Alarm	Worsening
Employment/Business		

TIMELINE ACTIVITIES



Situation overview

- No rainfall was recorded in the district during the month. The weather was hot and dry in contrast to the cold weather during earlier months.
- Quality and quantity of pasture continued to deteriorate, resulting in longer grazing distances at 15-20 kms.
- Availability of water worsened following drying up of more than 92 water pans and the number of areas being water trucked increased. More areas put under water trucking included; Wajir Bor, Ogorji, Lekole south and Likole north, Dugo, Ireteno, Isayu, Gerille, Handaki, Lolkuta North, Boji and Ogoralle. Others were Adan Awale, Belatul Amin, Gunana and Majabow, Qudama and Shimbirbul.
- The prices of all food commodities, especially cereals such as rice and maize, increased due to high fuel prices and poor infrastructure.
- Milk availability and supply continued to decline due to inadequate pasture. Milk prices rose to an average of Ksh 50-60 per 750ml bottle during the month.
- Pneumonia, diarrhoea, intestinal worms and malnutrition remained the major causes of morbidity and mortality in the district.
- Kalazaar became endemic in the district, with over 69 cases reported in Wajir District, Wajir South and Wajir West. Cases were treated by Ministry of Medical Services and Merlin (Ngo).
- The overall security situation in the district was calm though conflicts over water and pasture are expected during the prevailing dry spell.
- The average market price for all livestock species dropped, especially animals from Mandera, whose body condition was poor.
- The nutrition status of children below five years declined, with percentage of those rated as being at risk of malnutrition rising to 32.1 per cent from 31 in August.
- The immunisation coverage improved slightly to 55 per cent, while coverage of vitamin A supplementation stood at 44 per cent.
- General food distribution was on going, with a target of 139,893 people covering 20 per cent in central, 25 in Griftu, 29 in Bute, 39 in Eldas and Hadado and 20 in Sebule. The number of FDP implementing FFA also increased. Food for asset (FFA) program was also ongoing
- The influx of livestock from the neighboring Mandera district led to degradation and over grazing, posing a threat to the few available resources.
- The situation in the district was still at alarm stage.

Current interventions

Food aid

- EMOP program by World Food Program through Oxfam as the lead agency and Aldef-Kenya and Wasda as co-ollaborating agencies.
- Supplementary feeding program to children below five years by Merlin (Ngo), SFP and support to other vulnerable children.
- School feeding program and therapeutic feeding program by Merlin.
- Support to grannies by Catholic missions.

Non -food aid

- Ad hoc vaccination against PPR.

- De-silting of existing pans through FFA program.
- Mobile VCT services supported by APHIA II.
- Water and sanitation activities by Oxfam and implemented by Aldef-Kenya and Wasda.

Recommendations by DSG and national KFSSG

- Urgent support to rehabilitation and repair of boreholes and strengthening of rapid response teams in the district.
- Provision of contingency funds to mitigate effects of the dry spell.
- Provision of stand-by generators because of frequent breakdown, stand-by submersible pumps and repair of water buzzers.
- More capacity building for water users association, especially on resource utilisation and conflict management.
- Regular disease surveillance along the border and endemic areas.
- Drilling of boreholes in centres without reliable water sources.
- Strengthening livestock disease surveillance and management system.
- Increase the number of extension services providers, staffing level at ministries of Health and Education.
- De-silting of existing water pans (120 in the district) in preparation for the short rains.
- Strengthening of early warning system to facilitate detection and prepare for drought and put mitigation measures in place.
- Strengthening of school-feeding program to retain pupils in school during the dry season.

1. Environmental Indicators (Stability)

1.1 Rainfall

No rainfall was recorded during the month under review.

1.2 Natural vegetation, forage and pasture

- The quantity and quality of pasture and vegetation deteriorated following rain failure and influx of animals from Mandera district.
- This stretched the little pasture resources, causing environmental degradation.

1.3 Water source and availability

- Boreholes and shallow wells remained the main water sources for livestock and domestic use. A few protected water pans were reserved for human consumption but grossly polluted.
- The trekking distances to water sources for livestock increased to 15-20km and 5-10km for households.
- Households in the spent 4-5 hours in search of water.
- The trekking distances are expected to increase as the dry spell persists.

1.4 Emerging issues

- Outbreak of Kalazaar in Wajir south, frequent breakdown of boreholes were some of the emerging issues.

- High fuel prices impacted negatively on household economy.
- High increase of essential commodity prices, including cereals and commercial goods.
- Influx of pastoral communities from Mandera District.

1.4.1 Insecurity

- No cases of insecurity were reported except a few conflicts over water and pastures.

1.4.2 Migration

- There was inward migration of pastoralist from Mandera and neighboring Moyale districts.
- Animals are now concentrated in Tarbaj, Wajir Bor, Gerile and Griftu.

1.4.2 Implication on food security

- The influx of pastoralists from Mandera will result in faster depletion of the available resources, causing overgrazing and ultimately affecting the livestock body condition.
- This will lead to reduced livestock products and impact negatively on the food security status.
- The declining trends and failure of crops following inadequate rainfall will have a negative impact on food security in the district.

2. Rural economy indicators (Availability of food)

2.1 Livestock production

- Production of livestock is extremely low as stress related to water and pastures exist as these will in turn have negative impact on herd sizes.

2.1.1 Livestock body condition

- Livestock body condition was fair in all divisions following the good pasture and browse generated in the last season.
- However, conditions are expected to deteriorate, especially if the short rains are not timely and adequate.

2.1.2 Livestock ieseases

No severe outbreaks of livestock disease were reported unlike the previous month when PPR broke out, affecting shoats.

2.1.3 Milk production

- Milk production declined as pasture and browse became scarce.
- The price of milk per 750ml bottle was Ksh 50 to Ksh60.

2.2 Crop production

2.2.1 Timeliness and condition of crop production activities

- Maize and millet withered due to inadequate rainfall, while the farmers planted late.

- However, small garden farming went on Wajir central and other areas using small irrigation pumps and hand dug pans.

2.2.2 Implication on food security

- High fuel costs affected crop production. Irrigation farming through solar energy could significantly minimise fuel costs and improve food security in the district.

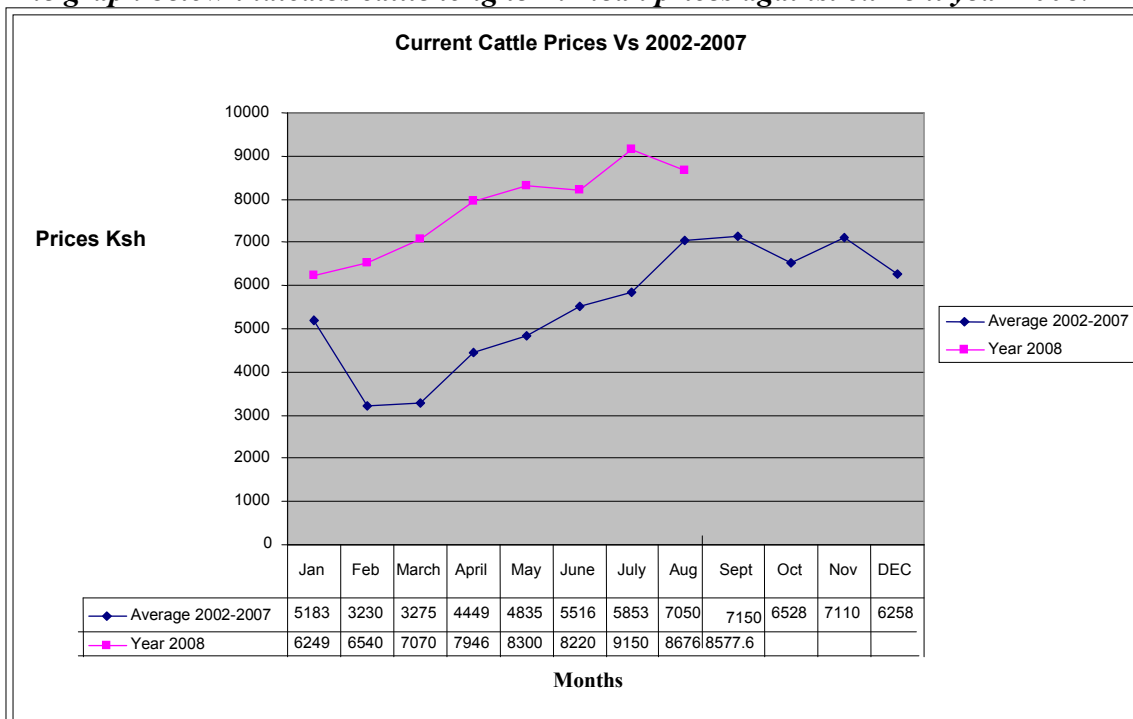
3. Access to food

3.1 Livestock marketing and sales

- The price of animals at the local market dropped for all species as body conditions deteriorated, especially animals from Mandera district.

3.1.1 Cattle prices

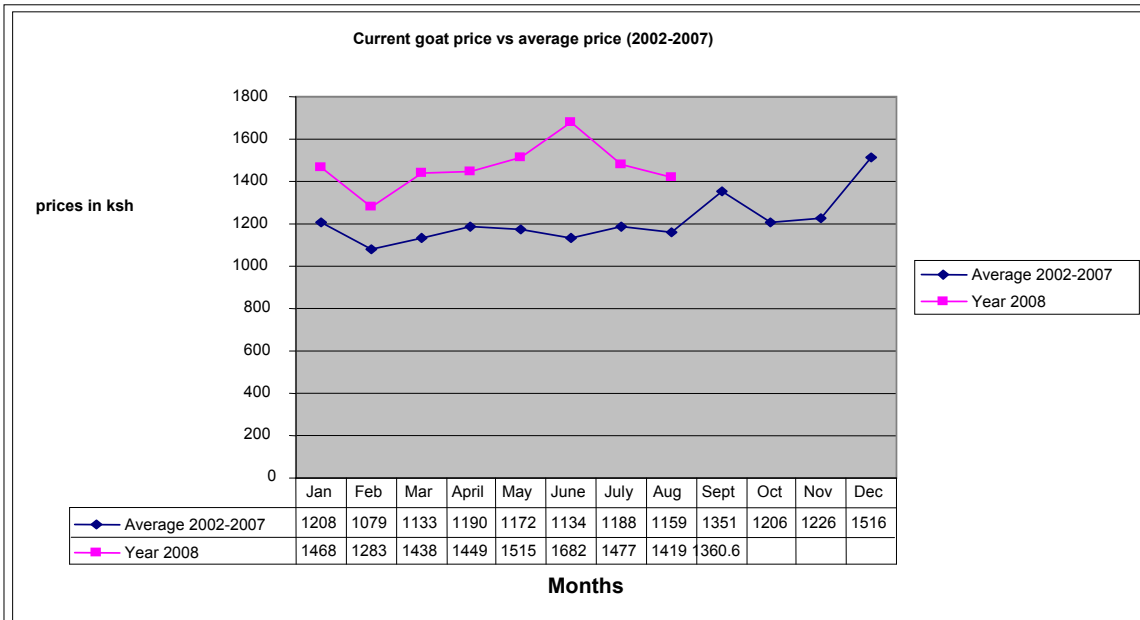
The graph below indicates cattle long term mean prices against current year 2008.



- The price of cattle dropped from Ksh8,676 in August to Ksh8,577.6.
- The drop was attributed to poor body condition as a result of insufficient pasture and browse.

3.1.2 Goat prices

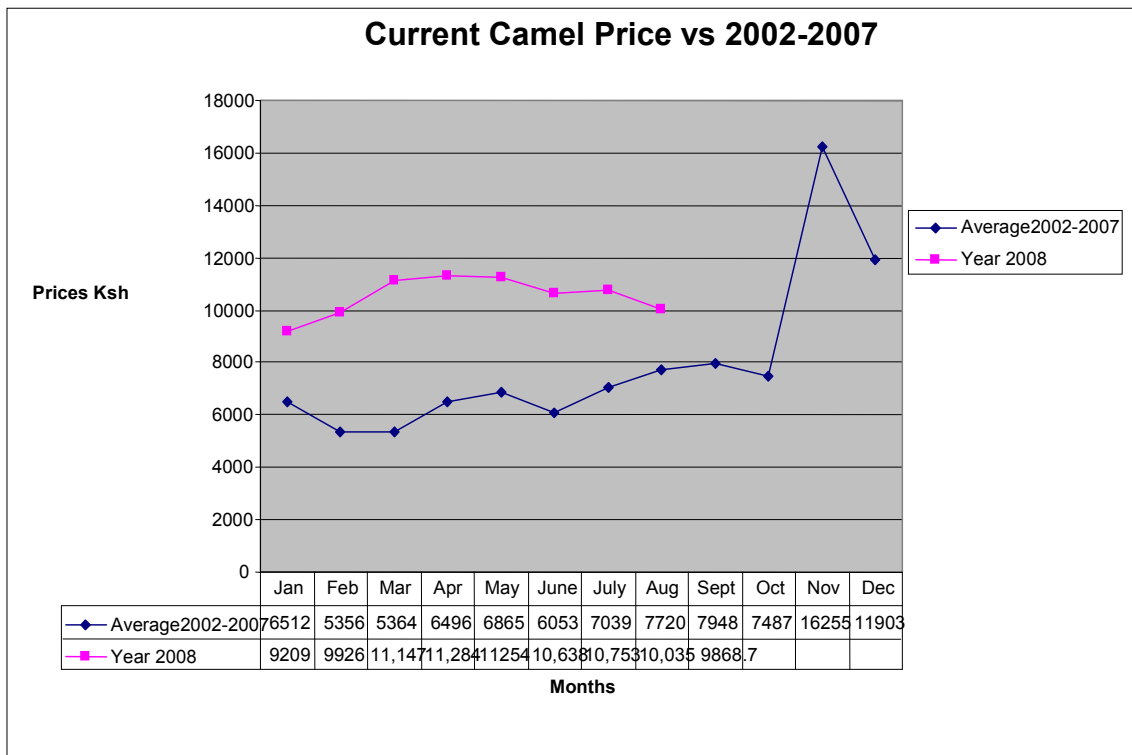
The graph indicates Goat long term mean prices against current year 2008.



- The price of goats dropped slightly from Ksh 1,419 in August to Ksh 1360.6.
- The downward trend was attributed to closure of market following a PPR outbreak and pastoralists had to sell their animals illegally.
- This posed a threat to household food security.

3.1.3 Camel prices

The graph below indicates Camel long term mean prices against current year 2008.



- Camel prices dropped slightly compared to the previous month. The average price was Ksh 9,868.7 from Ksh10,035 in August.
- Animals from Mandera district fetched lower prices as they were weak and emaciated, compared to ones from Wajir, affecting the average prices.

3.2 Livestock sales

- Livestock sales were generally poor as a result of poor body condition.

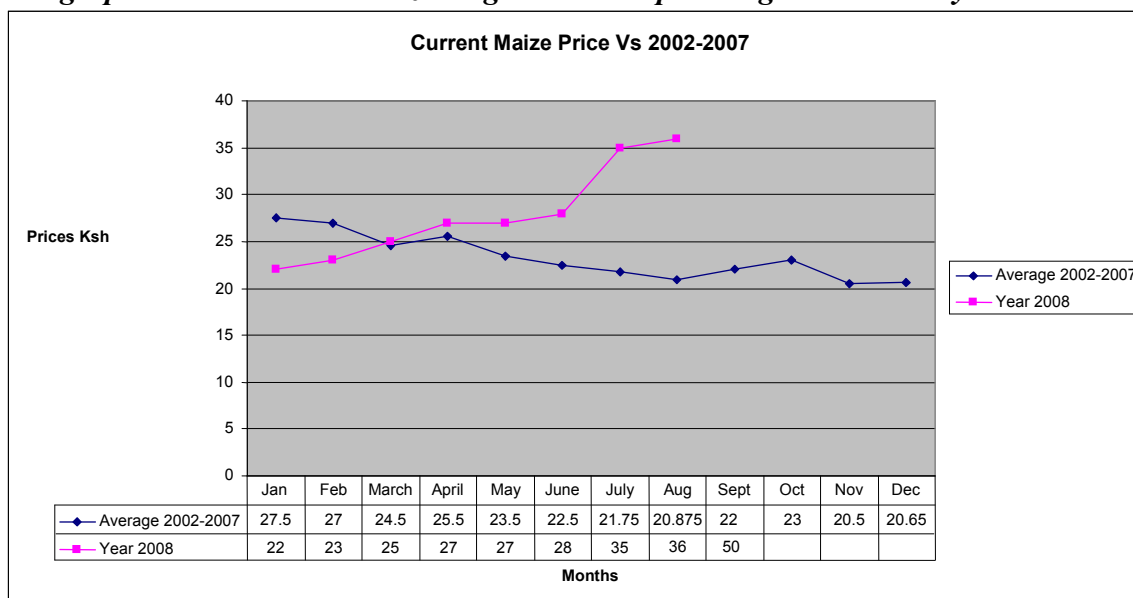
3.3 Milk consumption

- Milk consumption was low compared to the previous month as a result of reduced pasture resources.

3.4 Crop prizes

3.4.1 Maize prices

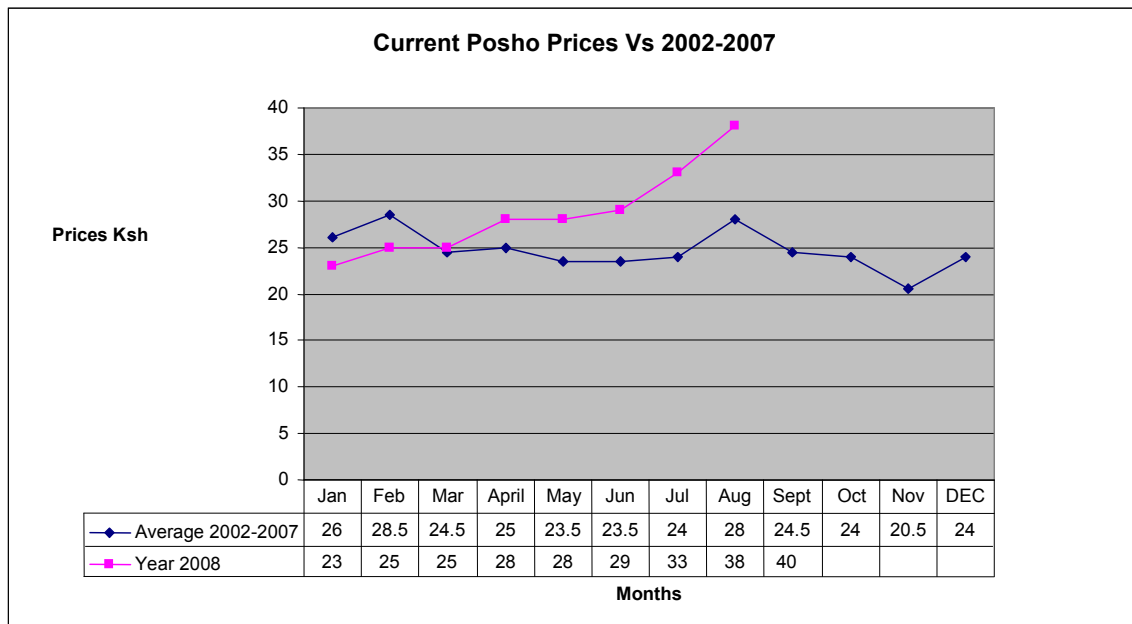
The graph below indicates maize long term mean prices against current year 2008.



- The average maize price during the month was Ksh 50 per kilo, up from Ksh 36 in August.
- The price was not normal at the time of the year.

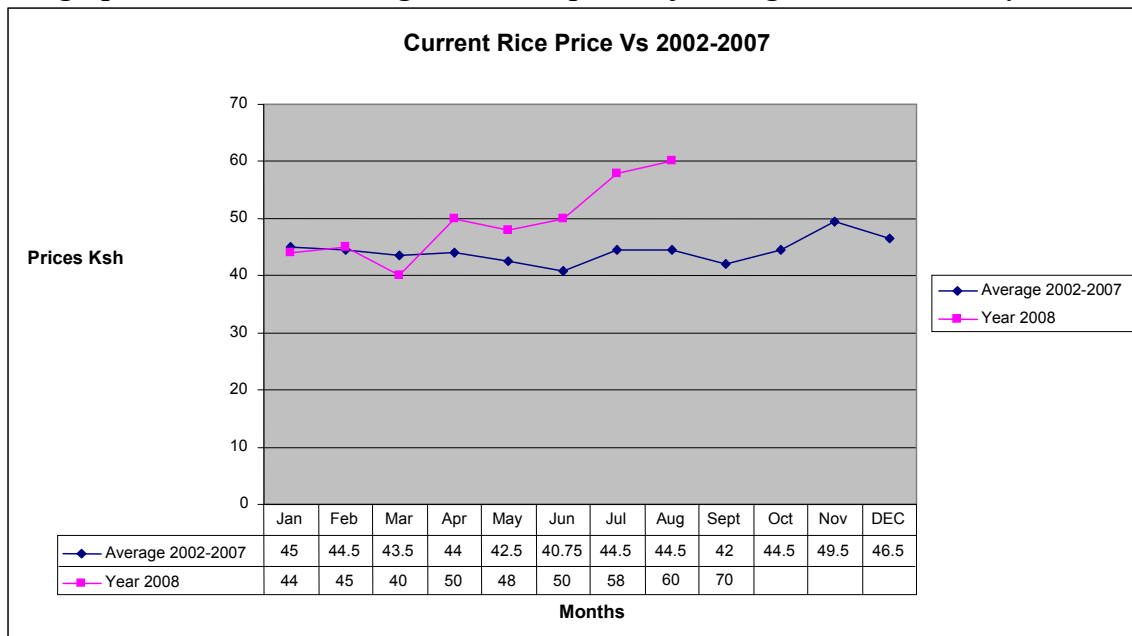
3.4.2 Posho (maize meal) prices

The price of posho increased slightly to Ksh 40 per kilo from Ksh 38 in August due to scarcity of maize in the local market.



3.4.3 Rice prices

The graph below indicates long term mean prices of rice against the current year 2008.



- The prices of rice increased compared to the previous month.
- The increase was due demand during the month of Ramadhan since rice is more commonly used than other cereals.

3.5 Income

3.5.1 Crop income

- Produce from kitchen farming using small irrigation pumps, especially at Wajir central were alternative source of income and widely sold in the local market.
- Tomatoes, pawpaws and water melons did well in saline waters of Wajir.

3.5.2 Livestock income

- The income from livestock was generally good, however most people engaged in livestock trade as brokers, middlemen or small scale traders and sale of quarry products in the small business livelihood zone.
- Hides and skins were also transported to outside markets, while camels were traded in markets in Ethiopia and Somalia.

3.5.3 Other income

- Hawking, selling of miraa (khat) and firewood, quarrying, daily casual especially in Small business/informal livelihood zone though the general income is still low.
- Sale of gum and resins was also common.

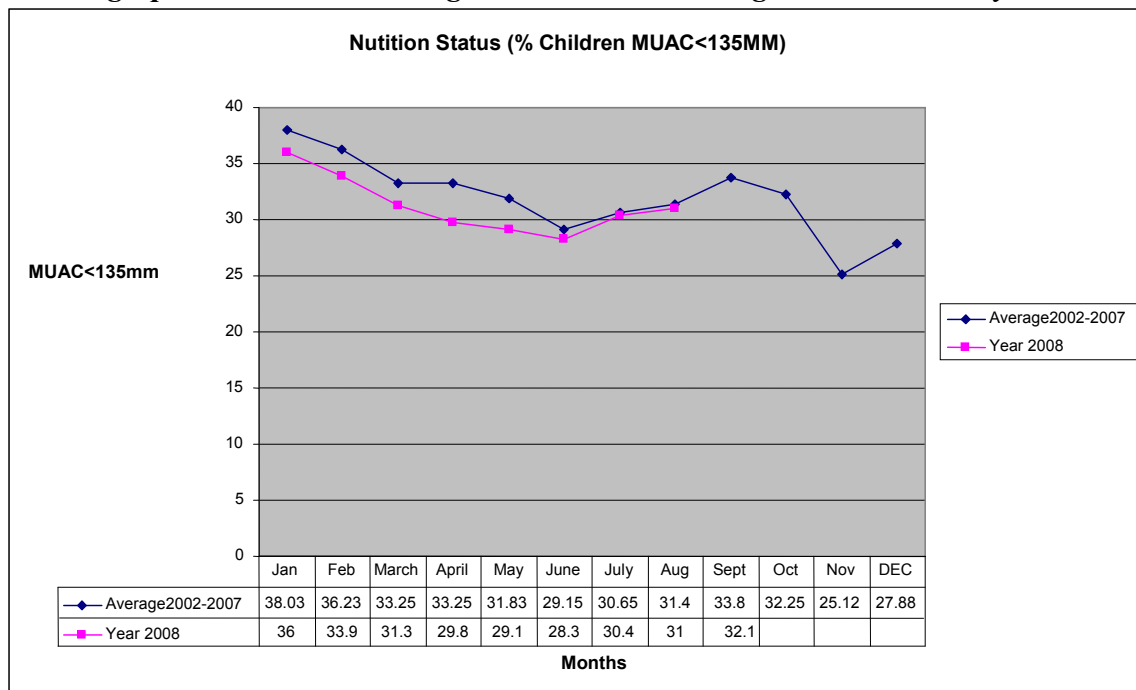
3.7 Implication of food security

- High food prices coupled with pastoralists' low purchasing power following poor livestock sales impacted negatively on food security in the district.

4.0 Welfare (utilisation of food)

4.1 Nutrition status

The graph below indicates long term muac<135mm against the current year 2008.



- The nutrition status of children below five years declined, with percentage of those rated as being at risk of malnutrition rising to 32.1 per cent from 31 in August.
- The immunisation coverage improved slightly to 55 per cent, while coverage of vitamin A supplementation stood at 44 per cent.
- The increase was attributed to rise in milk and other cereals prices, making them unaffordable for households.

4.2 Health

- Pneumonia, diarrhoea, intestinal worms and malnutrition remained the major causes of morbidity and mortality in the district.
- The most affected areas were Wajir West District, with over 36 people hospitalised.
- Upsurge of Kalazaar may undermine nutrition status of children less than five years.

5.0 Current interventions

5.1 Food aid

- EMOP program by World Food Program through Oxfam as the lead agency and Aldef-Kenya and Wasda as co-collaborating agencies.
- Supplementary feeding program to children below five years by Merlin (Ngo), SFP and support to other vulnerable children.
- School feeding program and therapeutic feeding program by Merlin.
- Support to grannies by Catholic missions.

Non -food aid

- Ad hoc vaccination against PPR.
- De-silting of existing pans through FFA program.
- Mobile VCT services supported by APHIA II.
- Water and sanitation activities by Oxfam and implemented by Aldef-Kenya and Wasda.
- Credit scheme used as revolving fund by Aldef Kenya (Ngo).
- Support to mobile school education through ALRMP and MOEST.

5.3 Other coping strategies

- Restricting of specific watering points that are close to settlements for human use, especially in Dams and ponds.
- Sale of quarry products for income-generating activities.
- Reduction of number of meals per day.
- Taking of non-food supplies on credit from shops.
- Sale of gum and resins.

6.0 Recommendations

- Mass treatment and vaccination of livestock diseases, especially shoats.
- Improve sanitation and promote hygiene.
- Strengthen disease surveillance along the border and curb Kalazaar at Arbajahan and Eldas.
- Support to orphans and other vulnerable groups through income-generating activities and material support.
- Food for training strategy to be considered and building of community capacity for asset management.
- Conflict early warning and peace building initiatives to be strengthened.

- Provision of more hand pumps and solar assisted water supply system for shallow wells for schools and institutions.
- Provision of vector control chemicals and equipment i.e. LLTNs, Icons, spray pumps and protective gears.
- Provision of more water kiosks at existing boreholes to improve separation of water points for human and livestock.
- Purchase of a submersible engine and stand-by generator set.
- Provision of contingency funds for drought preparedness.