

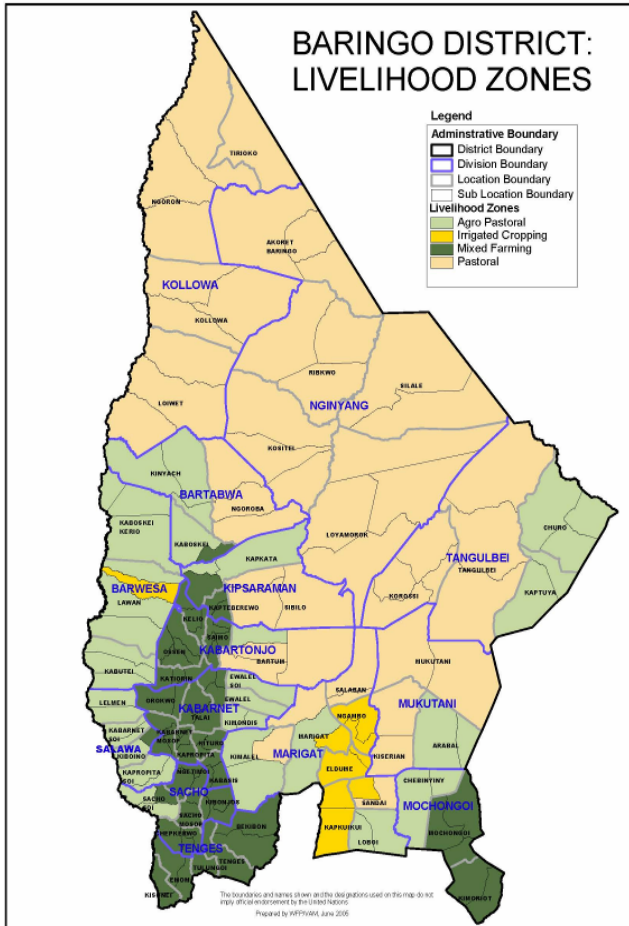


**OFFICE OF THE PRIME MINISTER
MINISTRY OF STATE FOR THE DEVELOPMENT OF NORTHERN KENYA AND OTHER ARID LANDS
ARID LANDS RESOURCE MANAGEMENT PROJECT II**

DROUGHT MONITORING BULLETIN, AUGUST 2009

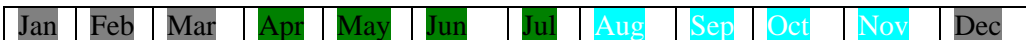
**Baringo Central/ North/ East Pokot/
Marigat Districts**

Warning Stages



Livelihood Zone	Warning stage	Trend
Pastoral	Alarm	Worsening
Agro pastoral	Alarm	Worsening
Irrigated Cropping	Alarm	Worsening
Mixed farming	Alarm	No change
Project area	Alarm	Worsening

Seasonal Calendar



- Dry season :- (Land preparation, minimal calving, lambing & kidding).
- Long rains :- (Planting, most kidding & lambing and minimal calving & honey harvesting).
- Short rains :- (Most calving & honey harvesting and minimal kidding & lambing, pre-harvest & harvesting).

Situation overview

- The districts received poor amount of rainfall during the month and temporal distribution was also poor. A total of 48.5 mm average was received from 2 – recording stations, an average of one day.
- The rainfall received had insignificant impact on the grazing and water resources. The quality and quantity of forage worsened in all the livelihood zones while water availability for both human and livestock was insufficient in pastoral, irrigated cropping and Agro-pastoral livelihood zones.
- Body condition of livestock was poor and deaths were reported due to the effects of drought stress in the pastoral and agro-pastoral livelihood zones.
- Milk production was low and this was attributed to poor body condition of the animals due to insufficient pasture and browse.
- The average prices of livestock decreased in goats while it slightly increased in cattle and sheep. The increase in prices was attributed to availability of buyers during the month. Poultry prices also decreased compared to last month due to low demand.
- The average prices of food crops and other commodities slightly decreased during the month owing to availability of supplies in the markets within the district and the neighbouring districts.
- Sale of fish, casual labour, petty trade (local beer brewing e.t.c.) and sale of charcoal and wood products were alternative sources of income for most sampled households during the month after the sale of livestock.
- The 1 nutrition status of children below five years (based on MUAC <135mm measurement) remained stable at 14 % as in the previous month. This however is likely to worsen as milk production is declining due to the drought effects.

Recommendations to DSG and KFSM

- The veterinary department /agencies should step up support to the livestock health sub sector through vaccinations and treatment of clinical cases. In particular, more efforts should be directed to investigate cases of Q-fever in goats in Kinyach (Bartabwa division), cases of CCPP & PPR in Ngoron (Kolowa division), bloody diarrhea outbreak in goats in Kamrio and rucus in Nginyang and Tangelbei divisions respectively, lice infestation in cattle in Kamrio (Nginyang division), ECF upsurge in Kipkata location (Kipsaraman division) and Kinyach (Bartabwa division) and mange outbreak in Kamrio (Nginyang division).
- The GOK and other aid agencies to put more efforts to ensure that communities in East Pokot, North Baringo, Marigat and Baringo central districts are given continuous relief food supplies (GFD) and supplementary food for children until the stress situation normalises as malnutrition cases are rising, prices of food commodities are rising, animals are dying due to drought effects hence people cannot cope with the stresses, also milk production from animals declined drastically due to the drought effects that has persisted for a long period.
- There is need to strengthen conflict prevention and peace building initiatives to maintain the already achieved level of peace and further reduce it to the lowest level along the borders of East Pokot, Baringo, Marakwet, Turkana, Laikipia west and Samburu districts to enhance peaceful co-existence.

- The MOH should make efforts to supply more Anti-malarial drugs in all the rural health facilities that are far from the district hospitals to check malaria upsurge and investigate cases of enteric fever upsurge in Ng'ambo, Endao and Sirata communities in Marigat district.
- The District Game Warden to put more efforts to ensure that baboons, hyenas, hunting dogs and lynx predating on goats in Mosuro (Mukutani division), Kositei location (Nginyang division), Barpello (Kolowa division), Chemintany (Bartabwa division), Rukus/ Komolion (Tangulbei division) and Kaptuya (Churo division) are contained to save the pastoralists who are losing their animals daily.

Current interventions

Non-food interventions

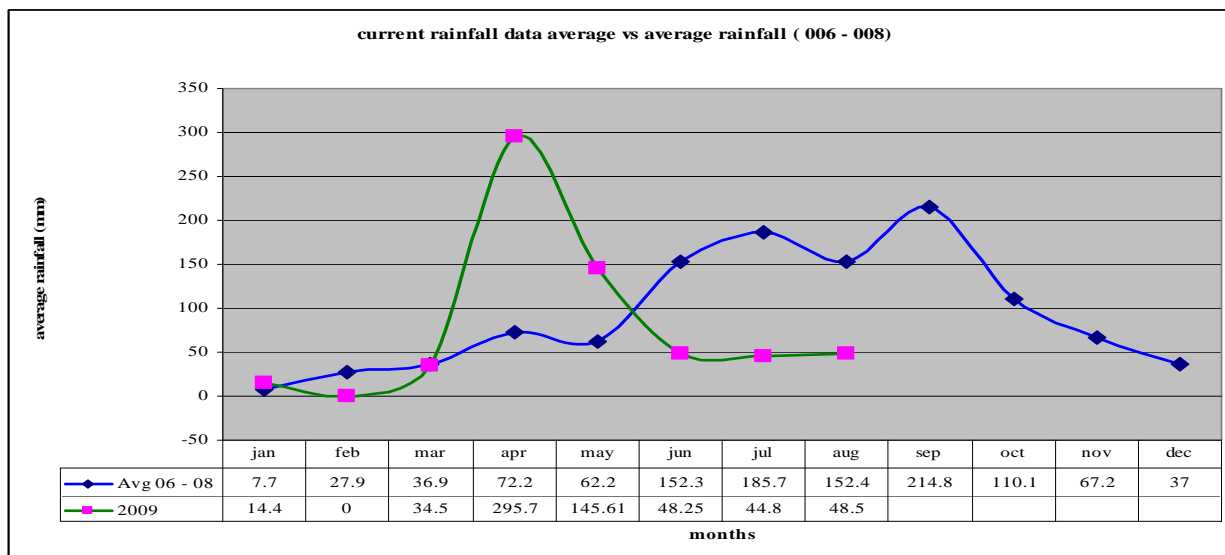
- Excavation of Apuketin & Kamrio (East pokot), Bukon (Bartabwa division) and Kongelbei (Marigat district) water pans – **ALRMP**.
- Rehabilitation of Chemorongion (Mochongoi division), Chesesoi & Kaptuya (East pokot) and Tibingar (Marigat division) Boreholes – **ALRMP/ CDF/ AIC**
- Water trucking in East Pokot district – **ALRMP**.
- Peace building initiatives within the districts' of the project area by various stakeholders i.e. the **PSC, DPC, DSC, World vision, Community Elders, Youth groups, Political leaders, Pastors and ALRMP**.

Food aid

- The **EMOP** relief food distribution phase 2 commenced in late May 2009 targeting the following number of population in the districts: - East Pokot – **47,423 (GFD)**, Baringo central – **3,476 (FFA)**, Marigat – **13,975 (FFA)** and Baringo North – **23,288 (FFA)** persons.

1.0 Environmental indicators (Stability)

1.1 Rainfall



Source: ALRMP rain gauge data stations

- An average of 48.5 mm of rainfall was received from 2- recording stations, 1 day average during the month in the project area compared to the previous month where there was 44.8 mm from 3- recording stations.
- This was not normal at the time of the year as shown on the graph where the current average is below the long term mean by 68 %. However, the drought period has extended more than expected.

1.2 Condition of natural vegetation and pasture

- The quantity of forage in all the livelihood zones worsened during the month due to lack of rain. The quality of the available pasture was poor.
- The average distance to grazing areas increased from 8.6 km the previous month to 9.7 km during the month.

1.3 Water sources and availability

- During the last four weeks there was a decrease in water availability following poor temporal distribution of showers in the project area.
- The water sources currently in use were pans and dams (20 % have water), natural rivers, traditional river wells, shallow wells, boreholes, and lakes.
- Distance to the nearest water source during the month increased to an average of 4.4 km from 4.0 km in the previous month for most of the households.

1.4 Emerging issues

- The little showers received during the month made no improvement on the browse and pasture condition in the districts. However, poor rejuvenation of pasture was noted owing to erratic rain experienced and the distances to water sources and pastures also

increased. 80 % of the satellite herds were still held up at the dry season grazing points (Marakwet, Turkana central, Pokot central, Samburu and Laikipia West districts).

- Goats, cattle and sheep continued to die due to the effects of the extended drought in pastoral, Agro-pastoral and irrigated cropping livelihood zones.
- Baboons preyed on goats due to lack of food in Mosuro community (Mukutani division), Kositei location (Nginyang division), Barpello community (Kolloa division), Komolion community (Tangulbei division) and Kaptuya community (Churo division), while hyenas preyed on goats in Kolloa location and Rukus community (Korossi location). On the other hand, hunting dogs preyed on goats in Kaptuya community (Churo division).
- Scarcity of water in Ngambo and Sirata/ Logumgum communities owing to drying up of Molo River and insufficient water in Perkera River.
- Abnormal out-migration of livestock in search of water and pasture in pastoral, agro-pastoral and irrigated cropping livelihood zones.

1.5 Implications on food security

- Worsening browse and pasture conditions, leading to livestock deaths and increasing distances to water accessibility had a negative impact on household food security for the pastoralists.

2.0 Rural economy indicators (Food availability)

2.1 Livestock production

2.1.1 Livestock body condition

- Livestock body condition was fair for both small stock and cattle respectively in mixed farming zone while poor in pastoral, Agro-pastoral and irrigated cropping livelihood zones. Goats, cattle and sheep continued dying in the latter zones due to the effects of the extended drought period.
- This was not normal at the time of the year owing to extended period of the dry spell.

2.1.2 Livestock diseases

- Suspected cases of Q-fever in goats were reported in Kinyach community (Bartabwa division), ECF upsurge in Kipkata location (Kipsaraman division) and Kinyach (Bartabwa division), CCPP & PPR in Ngoron location, Kolloa division, bloody diarrhea outbreak in goats in Kamrio and Rukus communities in Nginyang and Tangulbei divisions respectively, mange outbreak in Kamrio (Nginyang division) and lice infestation outbreak in cattle in Kamrio community (Nginyang division).

2.1.3 Milk production

- Milk production declined in the district owing to extended effects of drought.
- This was not normal at the time of the year as the drought effects persisted.

2.2 Crop production

2.2.1 Timeliness and status of various crop production activities

- Agro-pastoralists reported crop failure due to lack of rain and this was not normal at the time of the year as this is supposed to be the long rains season.

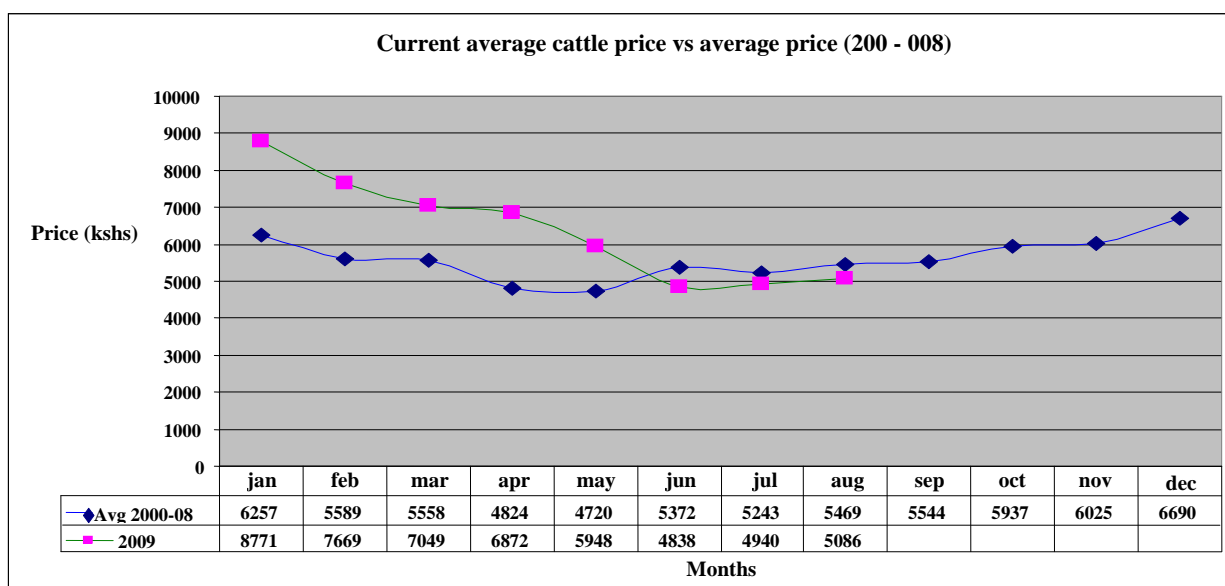
2.3 Implications on food security

- Milk production at household level declined yet this is the food depended upon by the pastoralists and children. Goats, cattle and sheep were dying due to drought stress, posing a major threat to food security at the household level. Hence, relief food needs to be given to the population continuously until the situation normalises.
- Market prices of cereals and legumes remained high in the district and availability in the markets remained scarce.

3.0 Access to food

3.1 Livestock marketing

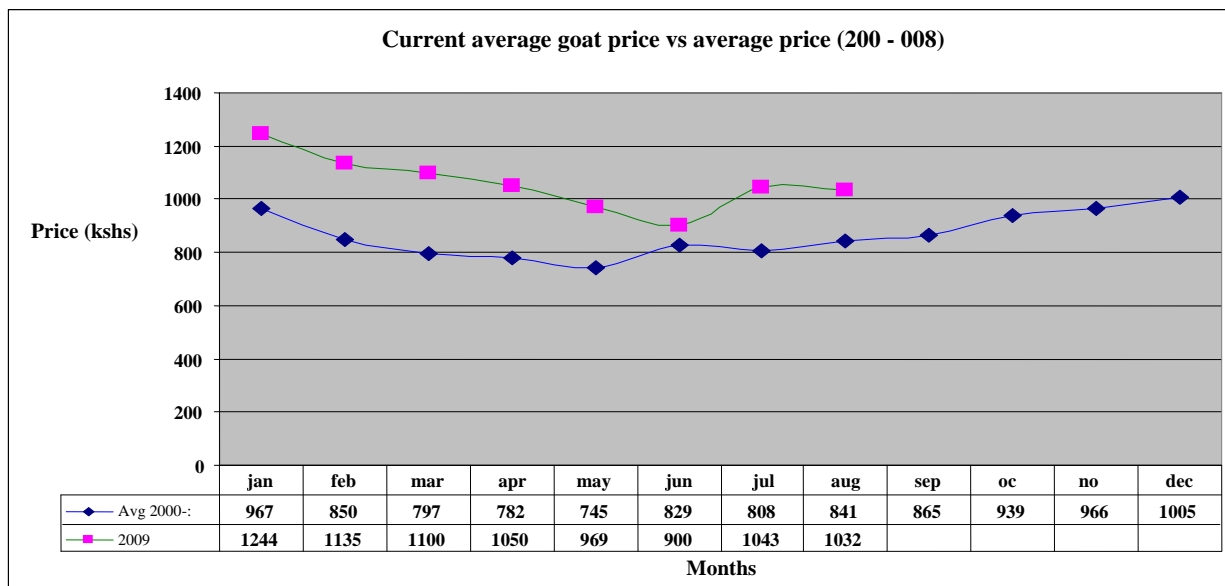
3.1.1 Cattle prices



N = 450 HH

- The average cattle prices showed a slight increase from Ksh 4,940 the previous month to Ksh5,086 in August.
- The increase was normal at the time of the year when the price of cattle is expected to go up at this time of the assumed rainy season. The price was, however, lower than the long term mean by 7.0 % as shown on the graph.
- The slight price increase was attributed to availability of external buyers during the month. However, the poor body condition of the livestock owing to insufficient pasture during this period contributed to low prices. This was not good for household food security.
- Bartabwa division had the highest average cattle price of Ksh7,000. This was attributed to fair body condition due to access to favorable pasture along the Kerio river basin. Tangulbei division had the lowest average price of Ksh3,446 due to poor body condition.

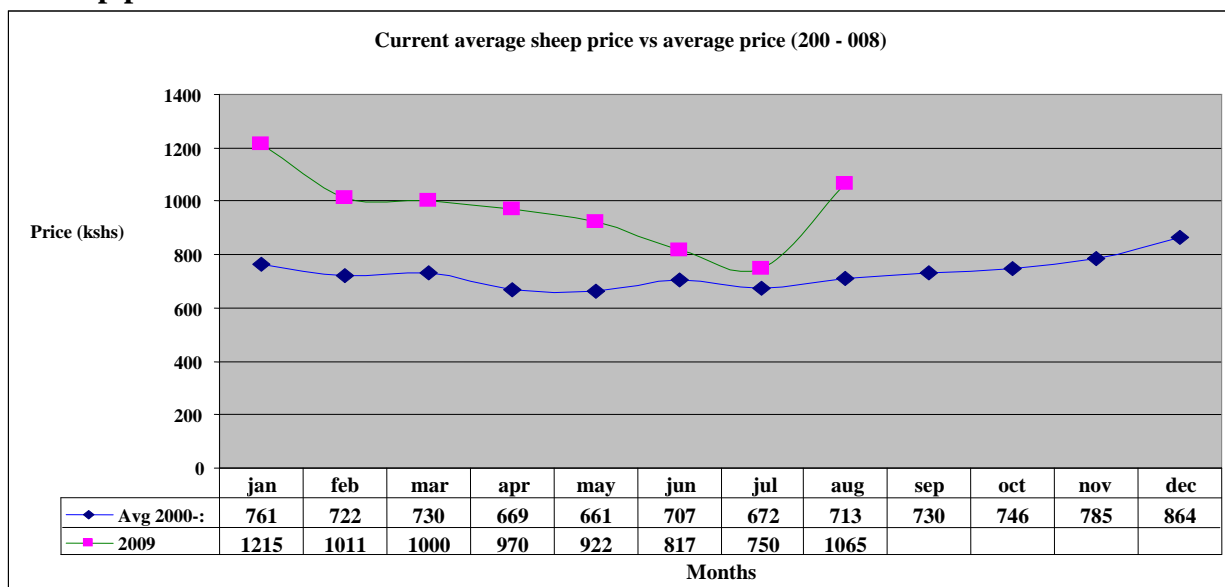
3.1.2 Goats prices



N = 450 HH

- The average goat price decreased from Ksh1,043 in July to Ksh1,032 in August showing price depreciation. The price was however slightly above the long term mean by 22.7 %. The decrease was attributed to flooding of goats in the markets, leading to sales at throw away price. This had a negative impact on household food security.
- Mukutani division had the highest goat price average of Ksh1,350 due to accessing external buyers while Tangelbei division had the lowest price average of Ksh832 owing to poor body condition.

3.1.3 Sheep prices



N = 450 HH

- The average sheep price increased from Ksh750 in July to Ksh1,065 in August, showing appreciation. The price increase was attributed to fair body condition and better demand. The price was, however, higher than the long term mean by 49.4 %. This had a positive impact on household food security.
- Mukutani division had the highest sheep price of Ksh1,500 owing to access to peri-urban prices, while Nginyang division had the lowest price of Ksh830 as a result of poor body condition of the animals, coupled with low demand.

3.2 Livestock sales

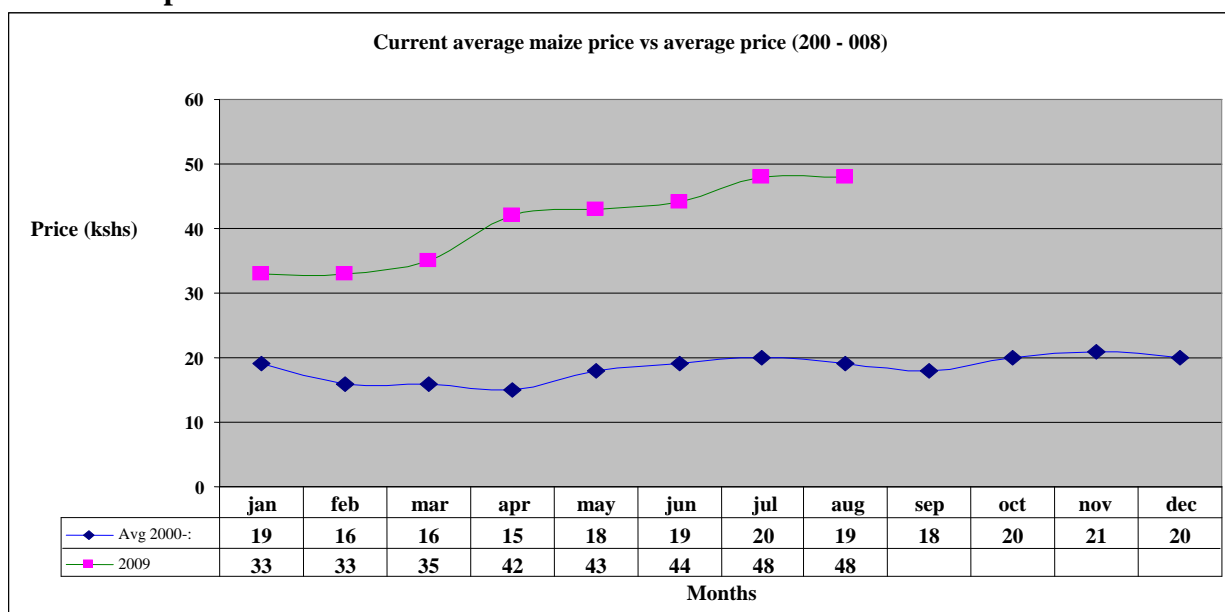
- The volume of livestock sales increased in the month compared to the previous months as a result of availability of external buyers during the month.
- Goats, sheep, poultry and cattle were the main livestock offered for sale in the markets.
- Pastoral, agro-pastoral and irrigated cropping livelihood zones had the highest sales as they depend on their livestock sales as the sole means of getting household needs while mixed farming livelihood zone had the lowest sales owing to having other sources of income e.g. business, food stock, employment and casual labor e.t.c. to depend on.
- The level of sales was not normal at the time of the year owing to high demand for food during the current drought period.

3.3 Milk consumption

- Milk consumption by household members declined drastically in all the livelihood zones. Compared with the previous month, the milk consumption at household level decreased owing to the effects of the extended drought. This had a negative impact on food security at household level, especially for children under five years.

3.4 Crop prices

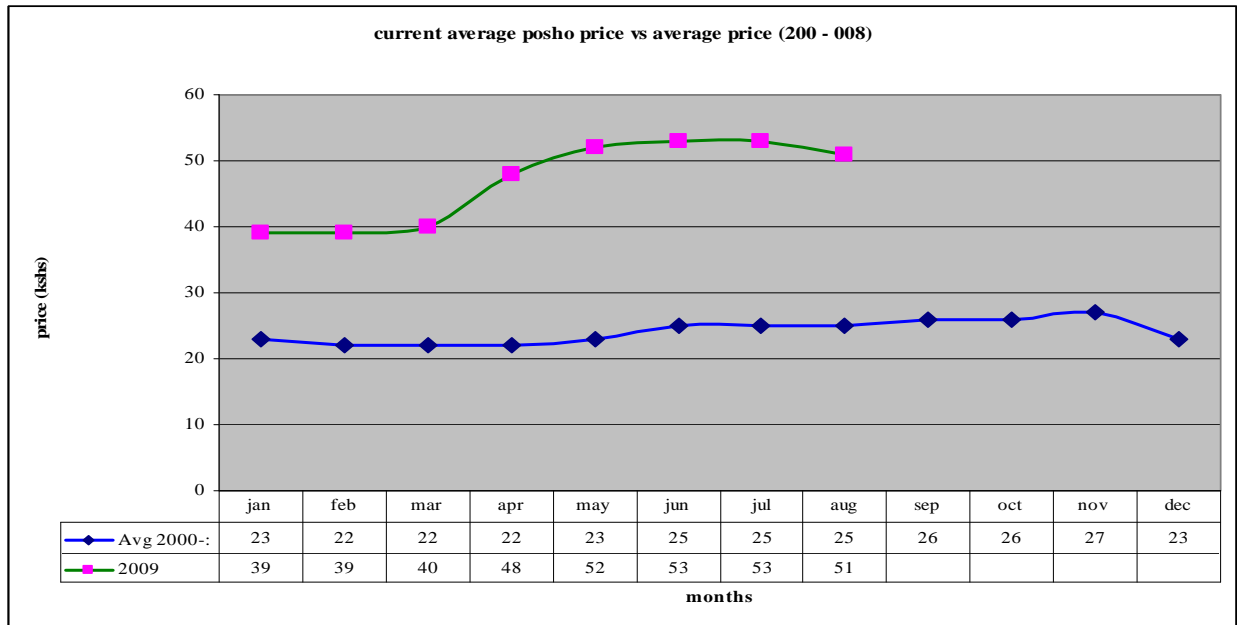
3.4.1 Maize prices



N = 450 HH

- The average maize price during the month was Ksh48 per kilo, same as that of the previous month (highest price in the market was Ksh 70).
- The average price was more than the long term mean by 152.6 % owing to scarcity of the food in markets. However, the demand picked up in the markets because of famine stress that affected more of the population in the district. The price stability was attributed to the inadequate supply of maize to the local markets from Agro-pastoralists within the district and neighbouring districts.
- As in the previous month, maize prices were much higher in the pastoral, Agro-pastoral and irrigated cropping livelihood zones than in the mixed farming livelihood zone.
- The average maize price was not normal at the time of the year owing to the scarcity of the food in the districts.

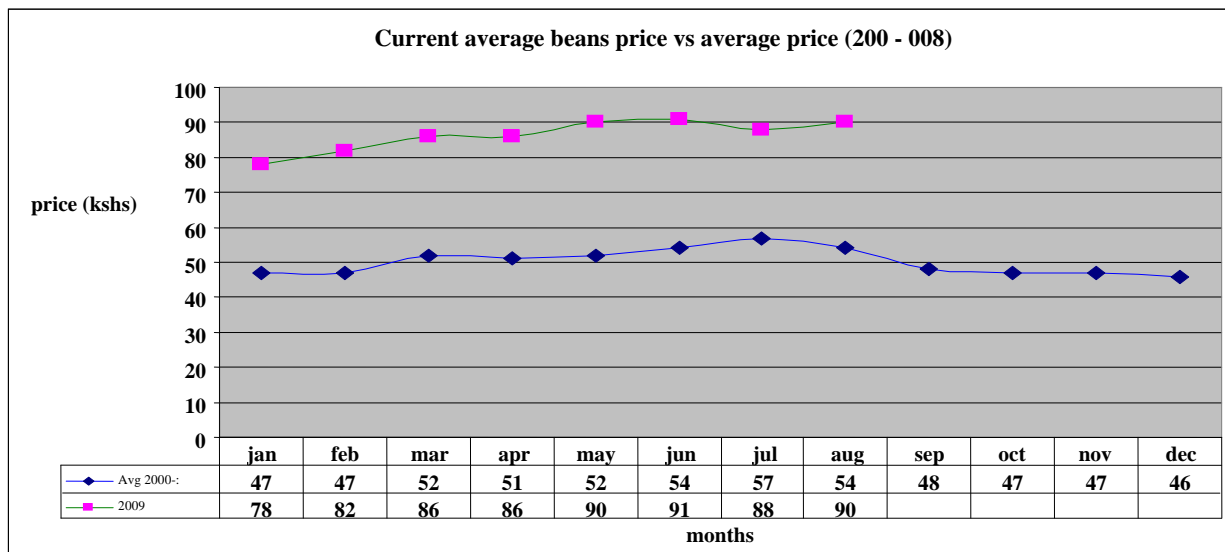
3.4.2 Posho (maize meal) prices



N = 450 HH

- The average price of posho during the month was Ksh51 per kilo, Ksh 2 less than that of the previous month (highest price in the market was Ksh80 per kg).
- The average price decreased due to availability of maize in the local markets. However, the price was more than the long term mean by 104 %, eroding the purchasing power of the pastoralists as they had to sell a lot of animals to meet the food demand.
- Posho prices were much higher in the pastoral, Agro-pastoral and Irrigated cropping livelihood zones than in the mixed farming zone because the three zones depend on purchase of the commodity from their local markets, which is normally dictated by availability unlike the mixed farming who are producers and access it easily.
- The price of posho was not normal at the time of the year owing to erratic availability of maize in the markets.

3.4.3 Beans prices



N = 450 HH

- The average price of beans during the month was Ksh90, Ksh2 more than the previous month. The highest price in the market was Ksh120 per kilo.
- The price was more than the long term mean by 74.1 %.
- The average price increased due to unavailability of the food commodity in the markets within the district and also from the neighboring districts. However, the prices were too high to cope with the purchasing power of the pastoralists. This is really a threat to household food security.
- Beans prices were higher in the pastoral livelihood zone than in the irrigated cropping and Agro- pastoral zones.
- Beans prices were not normal at the time of the year owing to its erratic availability in the markets.

3.5 Income

3.5.1 Crop income

- There was no income from crops and agro-pastoralists reported crop failure due to lack of rainfall.

3.5.2 Livestock income

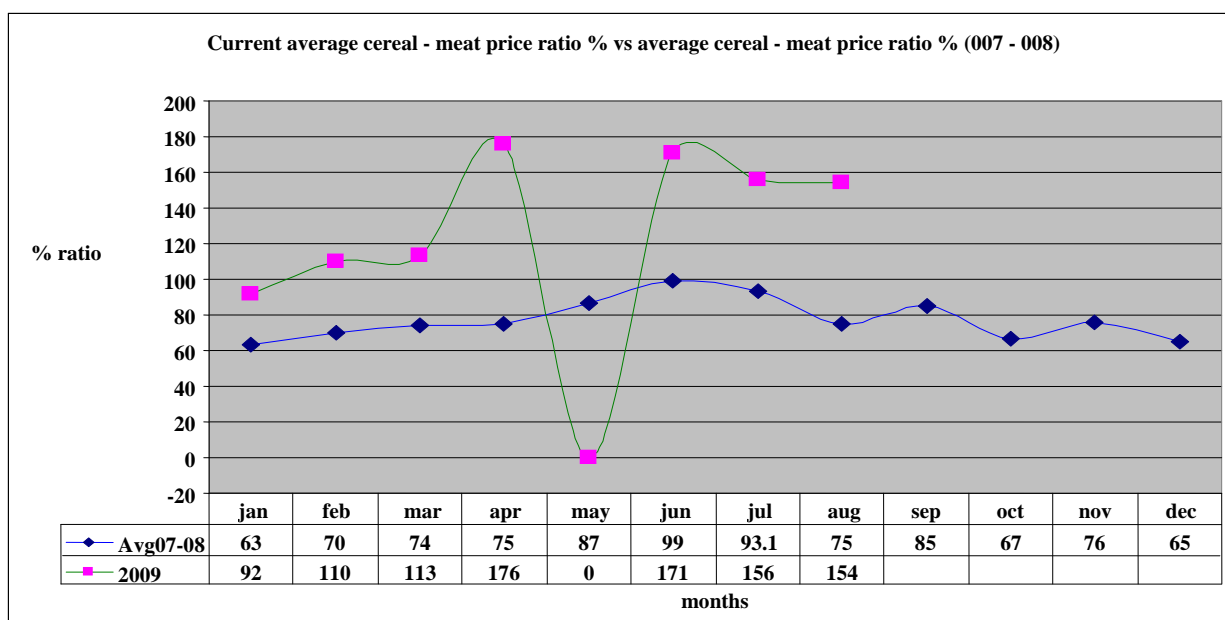
- Livestock income improved during the month due to fair availability of external buyers who normally purchase large numbers of animals and offer better prices.
- The income obtained from the livestock was not normal at the time of the year because of the fewer animals sold at the markets owing to the drought stress.

3.5.3 Other income

- Casual labour was another major source of income during the month, with approximately 1/3 of the household's members engaged as casual labourers, followed by sale of fish, sale of charcoal, sale of wood products and petty trade (local beer brewing).

- The average daily wage rate per casual for the month was Ksh97, below that of the previous month, something so meager to meet the daily household's needs.
- Most of the trade in charcoal, wood products and petty trade was recorded in Pastoral, irrigated cropping and Agro-pastoral livelihood zones. This reflects unavailability of livestock and farm incomes for the households in these zones.

3.6 Terms of trade



N = 450 HH

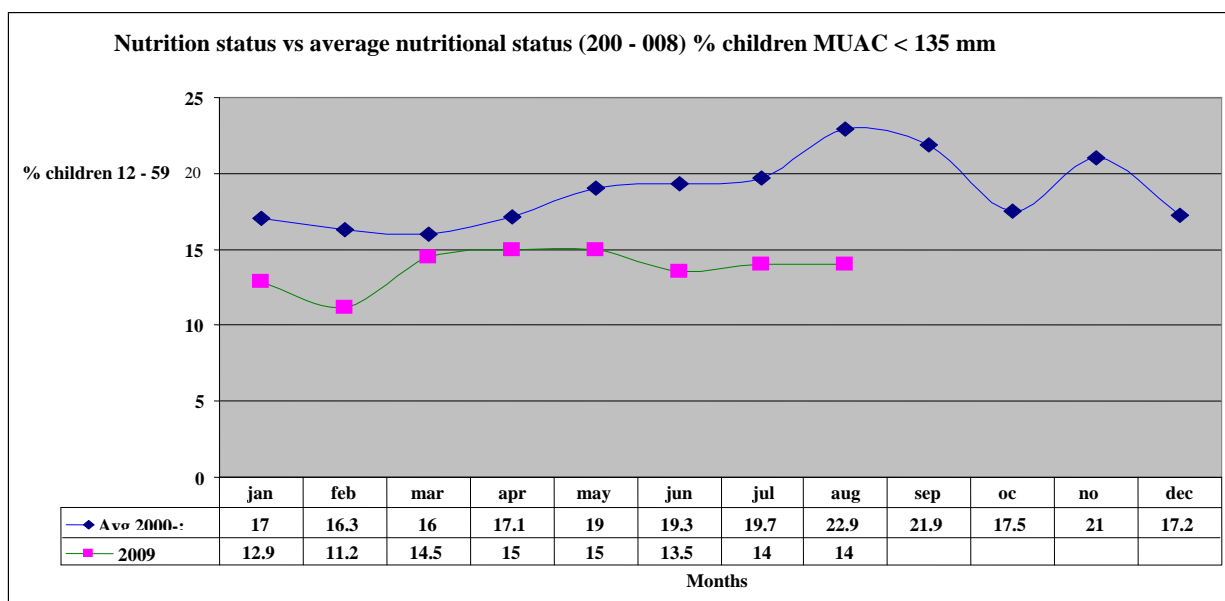
- Terms of trade improved by 1.3 % during the month from that of the previous month.
- The price ratio remained worse in pastoral, Agro-pastoral and irrigated cropping livelihood zones because of low prices offered for the livestock sales by the traders as compared to high prices to purchase cereals while it was lower in mixed farming livelihood zone owing to fair accessibility of cereals and better livestock prices in this area.
- The cereal: meat price ratio was not normal at the time of the year. For a pastoralist to purchase 90 kg sack of posho at an average price of Ksh 4,800 market price, he/ she has to sell 5 (five) goats, that goes for an average of Ksh1000 at the moment to meet the price and the sack cannot last for even a month. This completely eroded the purchasing power of the people, hence depleting the asset level of the pastoralists each time animals are sold.

3.7 Implications on food security

- The low prices of livestock offered, coupled with the erosion of the peoples' purchasing power in the district depleted the asset level of the pastoralists through high number of animals sold to purchase foods, hence a threat to the household food security.

4.0 Human welfare indicators (Utilisation of food)

4.1 Nutrition status



N = 1,924 children

- The nutrition status of children below five years remained stable, with the percentage of those rated at risk of malnutrition remaining at 14%, same as that of July.
- Highest rates were recorded in the pastoral, irrigated cropping and Agro-pastoral livelihood zones and lowest in mixed farming livelihood zone.
- However, the status was much better than the long term mean of 22.9% .

4.2 Human Health

- Malaria was the most common disease and reported cases were severe during the month.
- Enteric fever upsurge was reported in Ng'ambo, Endao and Sirata communities (Marigat district) for three months as a result of consuming dirty river water. Molo and Perkera rivers were dry in Ngambo and Sirata/ Logumgum areas.

4.3 Flagged areas

- Pastoral, Agro-pastoral and irrigated cropping livelihood zones reported the highest malnutrition rates and they require particular attention.

5.0 Current interventions

5.1 Non-food interventions

The following programmes were on-going in the district and are meant to mitigate the drought and famine stress.

- Excavation of Apuketin and Kamrio (East pokot), Bukon (Bartabwa division) and Kongelbei (Marigat district) water pans – ALRMP.
- Rehabilitation of Chemorongion (Mochongoi division), Chesesoi and Kaptuya (East Pokot) and Tibingar (Marigat division) boreholes – ALRMP/ CDF/ AIC.
- Water trucking in East Pokot district – ALRMP.
- Peace-building initiatives within the districts by various stakeholders i.e. the PSC, DPC, DSC, World Vision, Community Elders, youth groups, political leaders, pastors and ALRMP.

5.2 Food aid

- The EMOP relief food distribution phase 2 commenced in late May 2009, targeting the following number of population in the districts: - East Pokot – 47,423 (GFD), Baringo Central – 3,476 (FFA), Marigat – 13,975 (FFA) and Baringo North – 23,288 (FFA) persons.

5.3 Coping strategies

The coping mechanisms employed by the vulnerable population in all the livelihood zones during the month were;

- Migration of livestock in search of pasture and water.
- Borrowing food from relatives.
- Reduction in size of meals and skipping some.
- Eating wild foods and performing casual labour and petty trade.

This was employed by majority of the sampled households while a few of the households sold their livestock. Compared to previous months, the situation requires more percentage population coverage of Emergency Operation relief food distribution.

6.0 Recommendations to DSG and KFSM

- The veterinary department /agencies should step up support to the livestock health sub sector through vaccinations and treatment of clinical cases. In particular, more efforts should be directed to investigate cases of Q-fever in goats in Kinyach (Bartabwa division), cases of CCPP & PPR in Ngoron (Kolowa division), bloody diarrhea outbreak in goats in Kamrio and rukus in Nginyang and Tangulbei divisions respectively, lice infestation in cattle in Kamrio (Nginyang division), ECF upsurge in Kipkata location (Kipsaraman division) and Kinyach (Bartabwa division) and mange outbreak in Kamrio (Nginyang division).
- The GOK and other aid agencies to put more efforts to ensure that communities in East Pokot, North Baringo, Marigat and Baringo central districts are given continuous relief food supplies (GFD) and supplementary food for children until the stress situation normalises as malnutrition cases are rising, prices of food commodities are rising, animals are dying due to drought effects hence people cannot cope with the stresses, also milk production from animals declined drastically due to the drought effects that has persisted for a long period.
- There is need to strengthen conflict prevention and peace building initiatives to maintain the already achieved level of peace and further reduce it to the lowest level along the

borders of East Pokot, Baringo, Marakwet, Turkana, Laikipia west and Samburu districts to enhance peaceful co-existence.

- The MOH should make efforts to supply more Anti-malarial drugs in all the rural health facilities that are far from the district hospitals to check malaria upsurge and investigate cases of enteric fever upsurge in Ng'ambo, Endao and Sirata communities in Marigat district.
- The District Game Warden to put more efforts to ensure that baboons, hyenas, hunting dogs and lynx predating on goats in Mosuro (Mukutani division), Kositei location (Nginyang division), Barpello (Kolowa division), Chemintany (Bartabwa division), Rukus/ Komolion (Tangulbei division) and Kaptuya (Churo division) are contained to save the pastoralists who are losing their animals daily.