

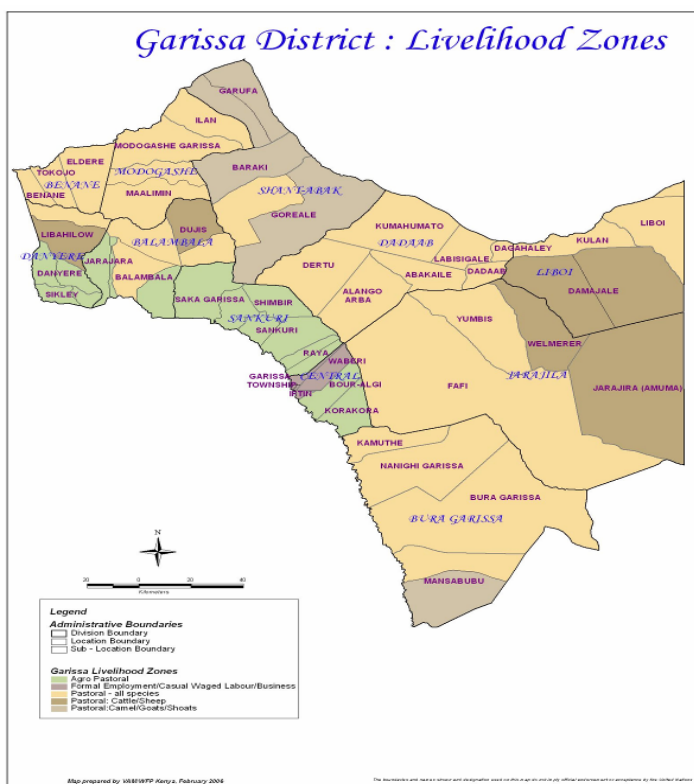


**OFFICE OF THE PRIME MINISTER**  
**MINISTRY OF STATE FOR THE DEVELOPMENT OF NORTHERN KENYA AND OTHER ARID LANDS**  
**ARID LANDS RESOURCE MANAGEMENT PROJECT II**

**DROUGHT MONITORING BULLETIN, AUGUST 2009**

**Garissa District**

**Warning Stages**



Livelihood Zone	Warning stage	Trend
Agro-pastoral	Alarm	Worsening
Pastoral-Cattle/Sheep	Alarm	Worsening
Pastoral- all species	Alarm	Worsening
Pastoral: Camels and Goats	Alarm	Worsening
District	Alarm	Worsening

**Seasonal Calendar**



<p><b>Dry period (Jilal) consisting of January, February, &amp; March.</b> Temperatures are high; activities carried out include,</p> <ul style="list-style-type: none"> <li>• migration of livestock for pasture &amp; water search,</li> <li>• Herd separation</li> <li>• Livestock marketing</li> <li>• Pressure on boreholes</li> <li>• Conflicts</li> </ul>	<p><b>Long rainy season (Guu), starts late March and continues in, April and May.</b> Activities carried are-</p> <ul style="list-style-type: none"> <li>• Selection &amp; breeding of livestock</li> <li>• weeding ceremonies</li> <li>• weaving</li> <li>• male circumcision</li> <li>• restocking of livestock</li> <li>• planting for rain fed crops</li> <li>• deworming of livestock</li> <li>• Forage survey</li> </ul>	<p><b>Dry and cold period (Hagaa) in the months of June, July, August, Sept. and mid October.</b> The activities performed are:</p> <ul style="list-style-type: none"> <li>• High rate of livestock and household migration</li> <li>• High labour demand</li> <li>• Destocking /culling</li> <li>• Surveillance for pasture /browse</li> <li>• Caravan water trekking</li> </ul>	<p><b>Short rainy season (deer) of Oct, Nov and December.</b> Activities for this period are:</p> <ul style="list-style-type: none"> <li>• Restocking of livestock.</li> <li>• Breed improvement</li> <li>• Planting for rain fed crops</li> <li>• Crafts and weaving</li> <li>• Calving and kidding period</li> </ul>
--	--	---	--

### **Situation overview**

- There was no rainfall recorded during the month and the long dry period persisted, which is normal for the time of year. This was worsened by the failure of long rains (March-May).
- Pasture and browse continued to get depleted in the entire district, with most of the vegetation having dried up.
- The main water sources available to the pastoralists in the district were boreholes, River Tana and Benane springs. Water accessibility for households continued to diminish when compared with the preceding month. Pastoralists covered over 35km before reaching any water source.
- Livestock access to water worsened compared with the preceding month. Livestock trekked for more than 35 km before reaching any water source, thus owners continued to water livestock, the weak and young stock at household level.
- There was no livestock migration reported during the month. However, livestock was concentrated on the eastern side of the district. The body condition of livestock continued to worsen, with some cases of death reported especially cattle and sheep when compared with the preceding month. The reported cases of contagious caprine pleuropneumonia during the previous month were confirmed by the veterinary department at the central division.
- Milk production in the district was on decline compared with the preceding month. This was exacerbated by loss of livestock body condition, poor quality and quantity of pasture/browse.
- Cattle prices continued to show a declining trend when compared with preceding month. This was triggered by the prevailing drought, leading to poor cattle body condition and the current economic crisis affecting most livestock business. Cattle traded at Ksh6, 500 compared to Ksh6, 725 in July.
- The prices of goats continued to decline compared with the preceding month. The average price was Ksh1,211, down from Ksh1,282 in July. This was attributed to diminishing browse and reduced water uptake due to reduced water availability and accessibility.
- Sheep prices continued to show a declining trend when compared with the preceding months. This was due to depleted pasture and disease incidences. Sheep traded at Ksh850 compared to Ksh922 in July.
- No cases of conflict/human displacement / insecurity were reported in the course of the month under review.
- The nutrition status of children below five years continued to deteriorate when compared with the preceding month, with the percentage of those rated at risk of malnutrition rising to 13.4% from 12.4% in July.

### **Current interventions**

#### **Non-food interventions**

- Repair, servicing and procurement of livestock boreholes equipment continued throughout the month.
- Water trucking continued in centres with acute shortages.

- Disease surveillance, vaccination and livestock treatment continued throughout the month supported by ALRMP.
- Njaa marufuku Kenya project and national agriculture and livestock extension programme by Ministry of Agriculture continued to be implemented in the district.
- Mobile outreach services were carried out by the Ministry of Health.

#### **Food aid**

- EMOP relief food distribution covering a population of 106,000 beneficiaries.
- School-feeding programme provided by WFP targeting 42,069 children continued during the month.
- Supplementary feeding targeting 10,200 children under five, pregnant and lactating mother continued.
- GOK relief food was distributed throughout the district (greater Garissa).
- Livestock feeds (hay) were distributed during the month.

#### **Recommendations to DSG and KFSM**

- Increase supplementary feeding to counter the increasing malnutrition rates.
- Give more attention to livestock boreholes repair, servicing and procuring of equipment to enhance water availability. Provide stand-by generating sets and repair old sets.
- Increase food aid as the drought is progressing.
- Support water trucking to centers with scarcity
- Continue to capacity build pastoral communities on peace building and conflict resolution.
- Provide livestock feeds and supplementary to the worst affected areas. Initiate livestock destocking programme to safeguard the economic life line of the pastoralists.
- Continue supporting small-scale farms along River Tana in terms of procuring farm inputs.
- Continue to support livestock, disease surveillance and treatment in the district.
- Continue to finance micro-projects for youth, women groups and communities in the urban and pastoral zones respectively.
- Mobilize and sensitize communities on diversification of livelihoods.
- Continue to provide mobile outreach services for centre with no health facilities.

### **1.0 Environmental indicators (Stability)**

#### **1.1 Rainfall**

- There was no rainfall realised during the month and this is normal during the time of year, but only worsened by the failure of long rains (March-May).
- Temperatures increased relatively when compared to the previous month, but within the normal range.

## **1.2 Condition of natural vegetation and pasture**

- Pasture and browse continued to get depleted in the entire district, with most of the vegetation having dried up.
- The quality and quantity of forage for livestock was totally diminished, leading to poor growth and development of livestock and consequently on production and economic.

## **1.3 Water sources and availability**

### **1.3.1 Use of water sources**

- The main water sources available to the pastoralists in the district were boreholes, River Tana and Benane springs. This led to congestion of livestock in borehole sites along the eastern part of the district (Liboi division) creating water scarcity. The livelihood of the pastoralists was in danger due to water scarcity.

### **1.3.2 Household access to water**

- Water accessibility for households continued to diminish when compared with the preceding months.
- The distances between households and water sources continued to increase. Pastoralists covered over 35km before reaching any water source. Some of the households depended on water trucking from line department and other stakeholders.

### **1.3.3 Livestock access to water**

- Livestock access to water worsened when compared with the preceding month. Increasing livestock grazing distances due to diminishing forages increased the water trekking distances.
- Livestock trekked for more than 35 km before reaching any water source, thus livestock owners continued to water the weak and young stock at household level.

## **1.4 Emerging issues**

### **1.4.1 Insecurity/Conflict/ Human displacement**

- No conflict over natural resource utilisation and human displacement was reported in the course of the month under review.
- However, the security situation remained tense along the Kenya/Somalia border but security surveillance was high.

### **1.4.2 Migration**

- There was no livestock migration reported during the month. However, livestock was concentrated on the eastern side of the district. The high livestock population created pressure at the watering points and on the surrounding environment.

### **1.4.3 Implications on food security**

- Reduced water availability, high cost of fuel for boreholes and depleted pasture/browse, led to deteriorating livestock body condition, reflecting negative food security implications in the greater Garissa district.

## **2.0 Rural economy indicators (food availability)**

### **2.1 Livestock production**

#### **2.1.1 Livestock body condition**

- The body condition of livestock continued to worsen, with increased cases of death reported especially cattle and sheep when compared with the preceding month. This was due to depleted forage and trekking of long distances for water. The continued decline in livestock body condition led to loss of some animals as they had to be left on the way during trekking.

#### **2.1.2 Livestock health and diseases**

- The reported cases of contagious caprine pleuropneumonia during the previous month were confirmed by the veterinary department at the central division. The other suspected and reported diseases in the district were ovine progressive intestinal pneumonia, tick-borne diseases and helminthiasis.

#### **2.1.3 Milk production**

- Milk production in the entire district was on decline when compared with the preceding month. This was exacerbated by loss of livestock body condition, poor quality and quantity of pasture/browse.

## **2.2 Crop production**

### **2.2.1 Timeliness and status of various crop production activities**

- Irrigation farming was ongoing along River Tana and the main crops grown under this system of production were bananas, pawpaw, melon, lemon, onions and tomatoes.
- Irrigation farming was constrained by lack of good market prices, high fuel costs and high cost of farm inputs.

### **2.2.2 Pests and crop diseases**

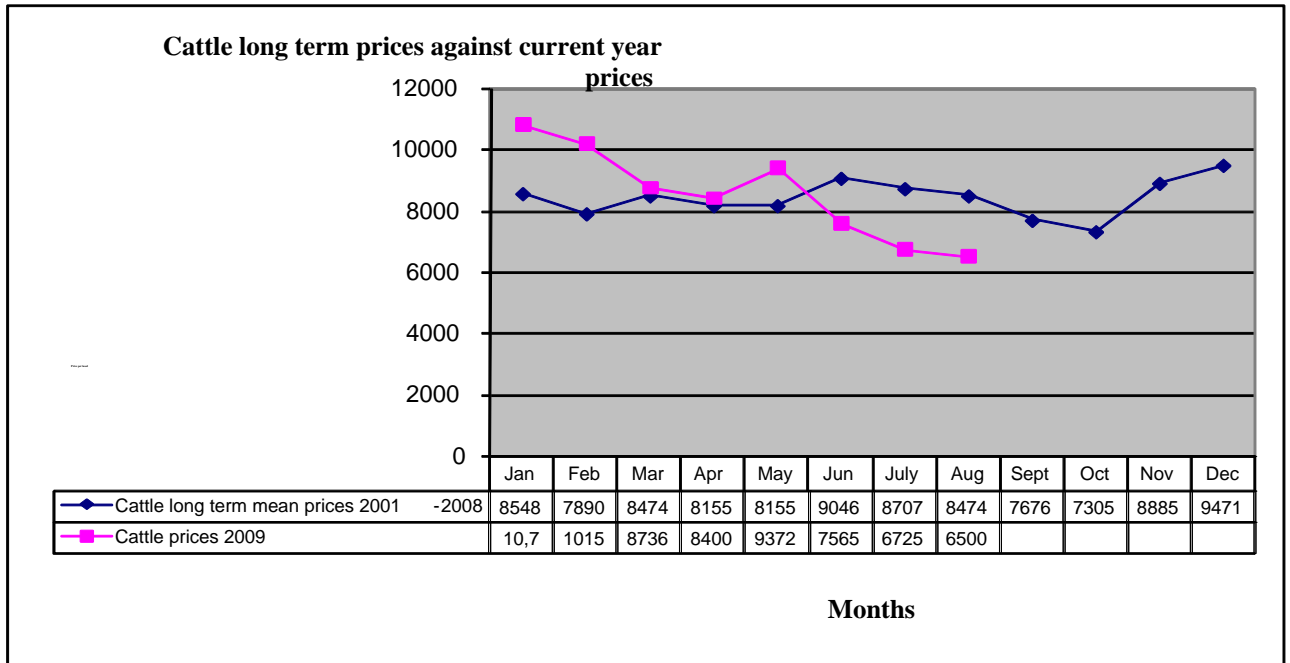
- No crop pests or diseases were reported in the course of the month under review.

## **3.0 Access to food**

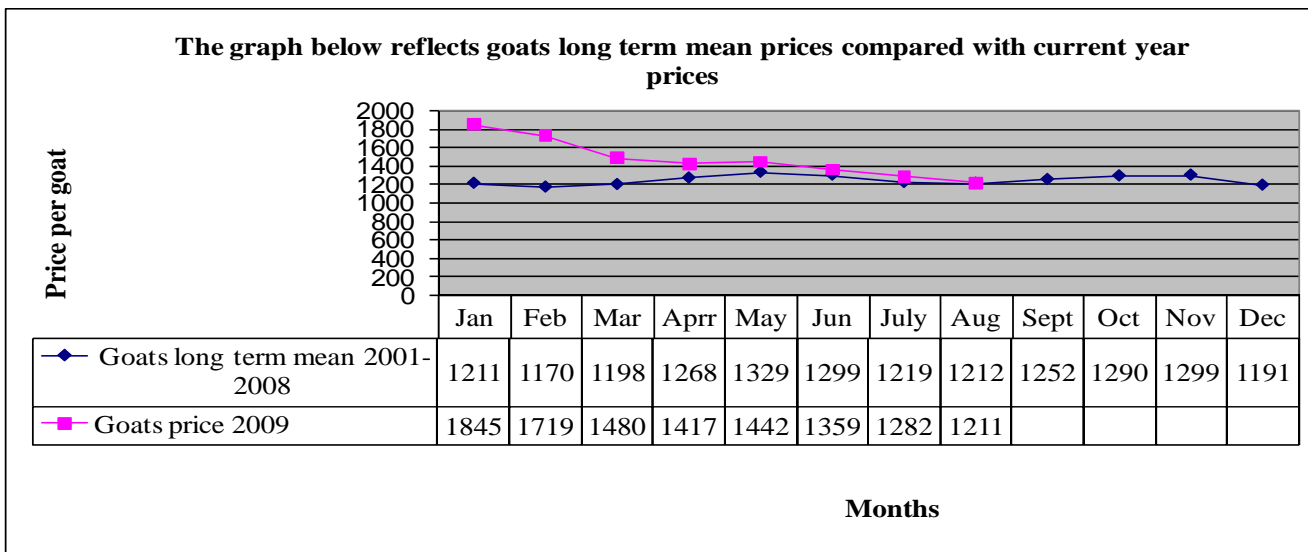
### **3.1 Livestock marketing**

#### **3.1.1 Cattle prices**

- Cattle prices continued to show a declining trend when compared with preceding month. This was triggered by the current drought, leading to poor cattle body condition and the current economic crisis affecting most livestock business. Cattle traded at Ksh6500 compared to Ksh6725 in July. This negative trend affected the life line of the pastoralists as most livestock owners depend on livestock sales as their economic main stay.

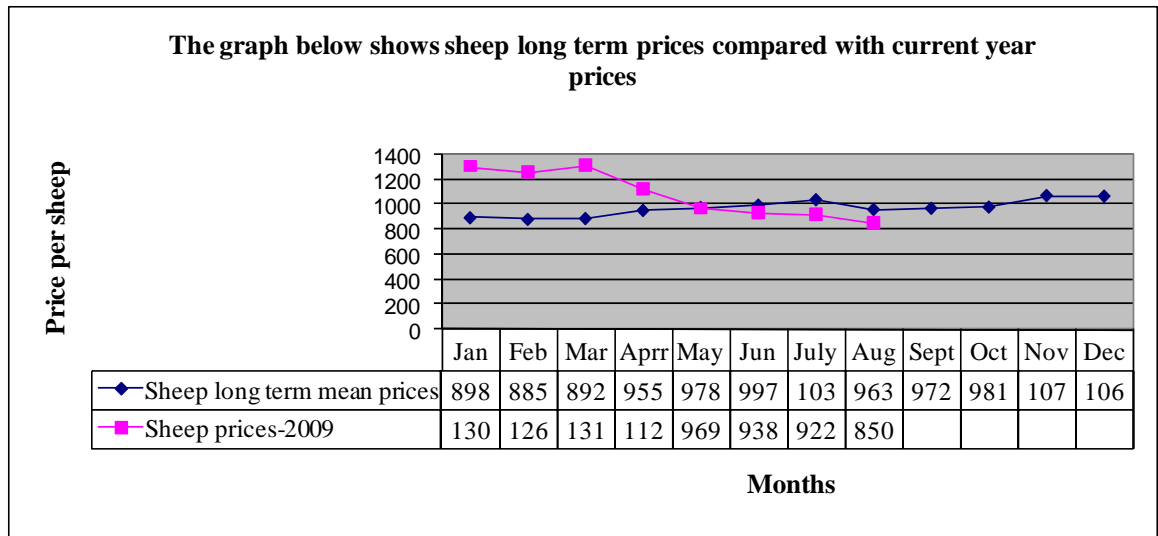


### 3.1.2 Goats prices



The prices of goats continued to decline when compared with the preceding month. The average price was Ksh1211 compared to Ksh1282 in July. This was mainly attributed to the poor body condition, which was associated with diminishing browse and reduced water uptake.

### 3.1.3 Sheep prices



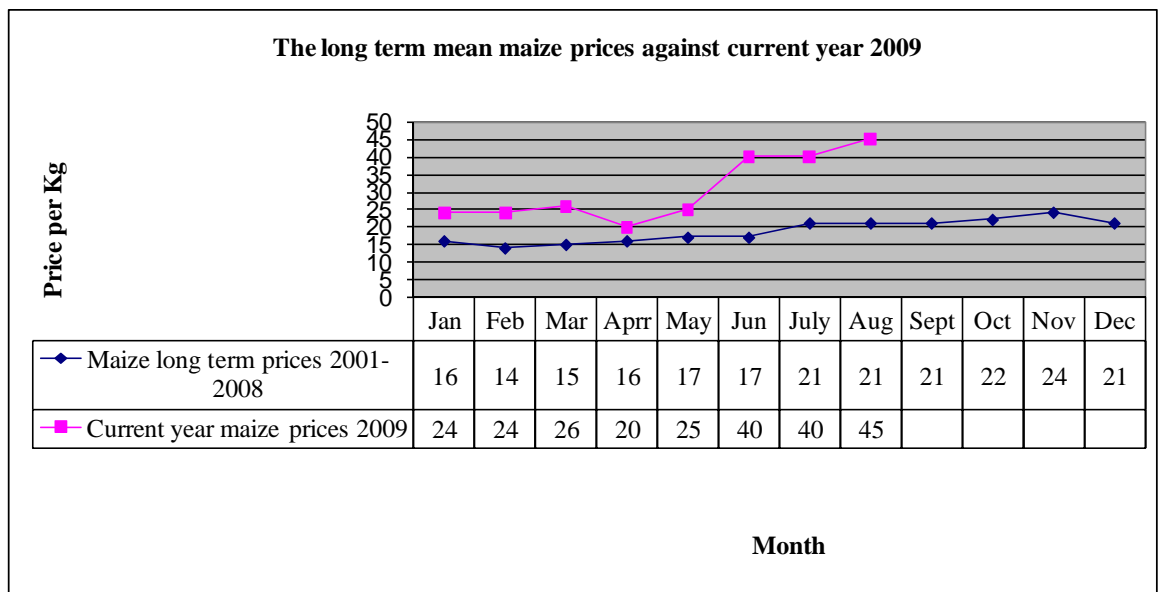
Sheep prices continued to show a declining trend when compared with the preceding month. This was due to depleted pasture and disease incidences. Sheep traded at Ksh850 compared to Ksh922 in July.

### 3.2 Livestock sales

The livestock sales rate decreased when compared with the preceding month. This was due to reducing livestock prices, reduced demand, hence lack of market for livestock. Families were faced with the task of purchasing food on credit and in exchange for livestock.

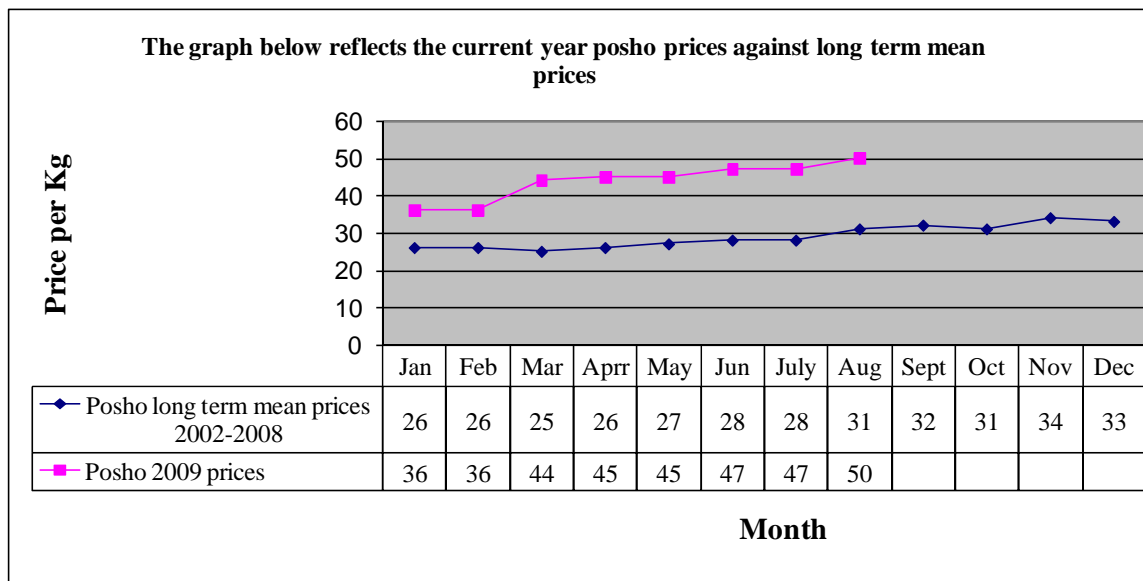
### 3.3 Food prices

#### 3.3.1 Maize prices



Maize prices showed an increasing trend and were above the normal long term mean prices when compared with the preceding month. This was due to acute shortage of maize at household level. The price of maize was Ksh45 compared to Ksh40 in July.

### 3.3.2 Posho (locally milled and Jogoo) prices



The prices of posho and jogoo (refined maize meal) which are both end products of maize increased when compared to the previous month and was above the long term mean. The average price was Ksh50, up from Ksh47 in July. The increase in prices of essential food commodities and decrease in livestock prices had an impact on the purchasing powers of households.

### 3.3.3 Prices of other food commodities

The prices of other essential food products remained the same when compared to the preceding month. However, the price was above the normal due to the current inflation of food commodities in the country.

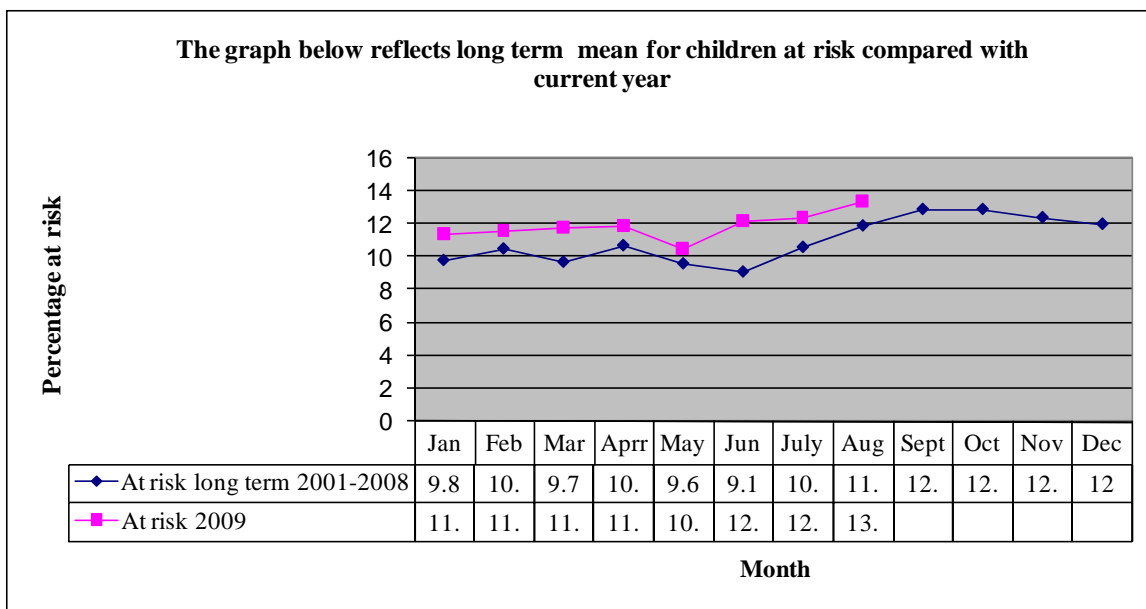
### 3.4 Implications food security

High food prices (cereal and other food items), declining livestock prices and reduced livestock products in the district reflected negative implications on food security.

## 4.0 Human welfare indicators (Utilisation of food)

### 4.1 Nutritional status

- The nutrition status of children and below five years continued to deteriorate when compared with the preceding month. The percentage of those at risk of malnutrition (based on MUAC<135mm) was 13.4%, up from 12.4% in July. This was due to high decline of livestock products (milk), which is the basis of nutrition for pastoralist children, coupled with low availability and accessibility of essential food commodities.



**Number of children=1386**

#### 4.2 Human health

- No human disease outbreak was reported in the district but cases of malaria and upper respiratory tract infections were reported.

#### 4.3 Flagged areas (affected areas)

- There were no flagged areas but due to continuous malnutrition and poor sanitation in the pastoral setup, some diseases may arise and cause damage to the population.

### 5.0 Current interventions

#### 5.1 Non-food interventions

- Repair, servicing and procurement of livestock boreholes equipment continued throughout the month.
- Water trucking continued in centres with acute water shortages.
- Disease surveillance, vaccination and livestock treatment continued throughout the month supported by ALRMP.
- Njaa marufuku Kenya project and national agriculture and livestock extension programme by Ministry of Agriculture continued to be implemented in the district.
- Mobile outreach services were carried out by the Ministry of Health.
- Capacity building and funding of community micro-projects continued throughout the month.

#### 5.2 Food aid

- Emop relief food distribution covering a population of 106,400 beneficiaries.
- School feeding programme provided by W.F.P targeting 42,069 children continued during the month.

- Supplementary feeding targeting 10,200 children under five, pregnant and lactating mother continued.
- GOK relief food was distributed throughout the district (greater Garissa).
- Livestock feed (hay) was distributed during the month.

### **5.3 Coping strategies**

- Practicing of petty trade became an option to diversify livelihoods.
- Reliance on remittances.
- Migration of herds in search of pasture/browse.
- Credit and borrowing continued to become popular.
- Households dropped out from pastoralist to sedentary settlements.

### **6.0 Recommendations to DSG and KFSM**

- Give more attention to livestock boreholes repair, servicing and procuring of equipment to enhance water availability.
- Increase food aid as the drought is progressing.
- Provide stand-by generating sets and repair old sets.
- Support water trucking to centres with acute water scarcity.
- Initiate livestock destocking programme to safeguard the economic life line of the pastoralists.
- Continue to capacity build pastoral communities on peace building and conflict resolution.
- Provide livestock feeds and supplementary to the worst affected areas.
- Continue supporting small-scale farms along River Tana in terms of procuring farm inputs.
- Continue to support livestock, diseases surveillance and treatments in the district.
- Continue to finance micro-projects for youth, women groups and communities in the urban and pastoral zones respectively.
- Mobilize and sensitize communities on diversification of livelihoods.
- Continue to provide mobile outreach services for centre with no health facilities.
- Increase supplementary feeding to counter the increasing malnutrition rates.