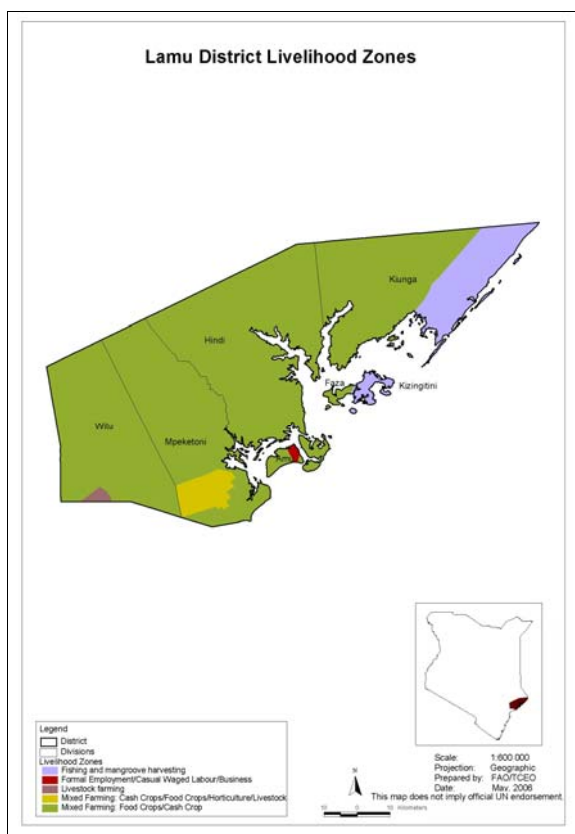




**OFFICE OF THE PRIME MINISTER
MINISTRY OF STATE FOR THE DEVELOPMENT OF NORTHERN KENYA AND OTHER ARID LANDS
ARID LANDS RESOURCE MANAGEMENT PROJECT II**

DROUGHT MONITORING BULLETIN, AUGUST 2009

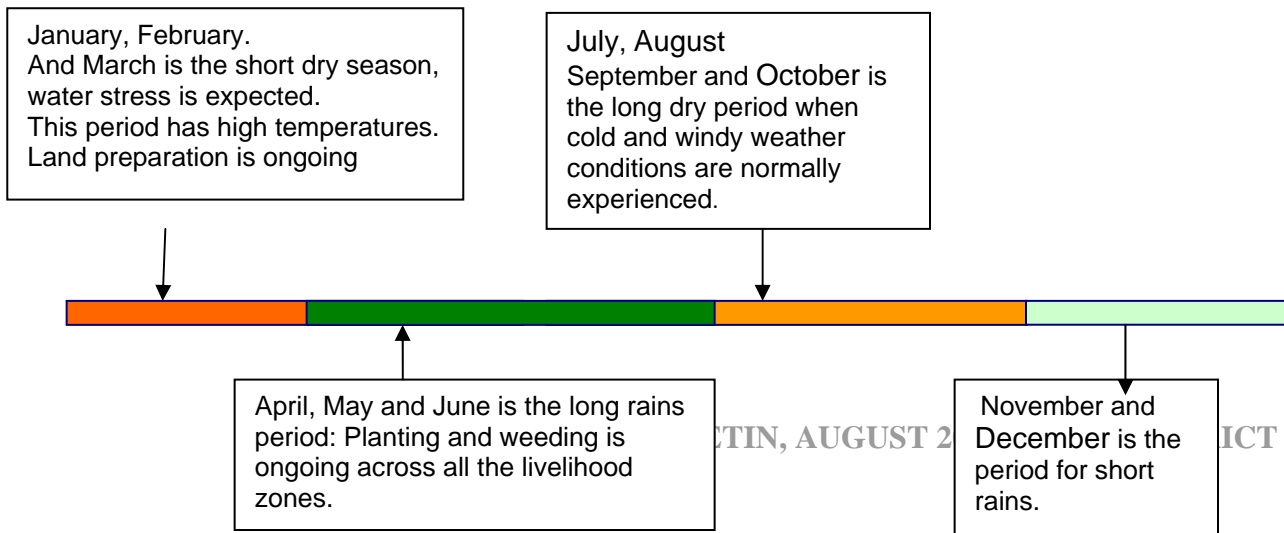
Lamu District



Warning Stages

Livelihood Zone	Stage	Trend
Mixed Farming: Cash crops/food crops/horticulture	Normal	Improving
Mixed Farming: /food crops/Cash crops /	Alert	Improving
Livestock farming	Normal	Improving
District	Normal	Improving

Seasonal calendar



Situation overview

- The district received average 15.3mm of rainfall compared to same time long term average of 58.61 mm. The long rains decreased across the district and they were sparsely distributed and in very low amounts compared to long term average.
- The quality of forage and pasture improved and was in average quantities.
- Access to water and pasture was good, with stabilizing distances, while livestock body condition and milk production improved.
- Cattle prices decreased by 4.6% compared to long term average of year 2006-08, unlike previous month's decrease at 20.5%. Goat prices increased compared to long term average of year 2006-2008 by 13.5%.
- Maize prices increased by 7.6% compared to the long term average of year 2006-2008 way below last month's big increase of 41.94 % due to beginning of harvest season, while that of beans went up by 10 % down from 20% previous month.
- The nutrition status of children below five years improved slightly during the month, with the percentage of those with mid upper arm circumference (MUAC) less than 135mm standing at 5.7% down from 6.0% previous month.
- The situation in the district was normal and the trend improving.

Current interventions

Food aid

- EMOP was underway and the lead agency reported distribution.

Non-food interventions

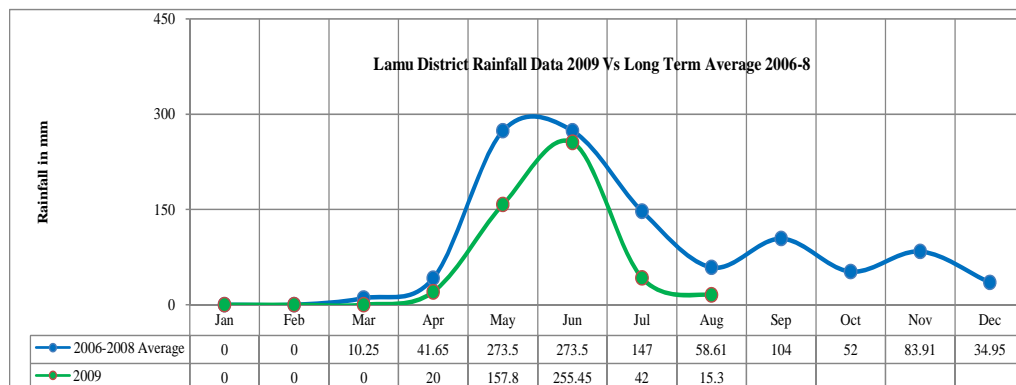
- KWS helped farmers ward off wildlife that posed a threat to standing crop.

Recommendations to DSG and KFSM

- The DLPO and DVO to address issues of livestock diseases and pastures by incoming livestock from neighboring Ijara and Tana River Districts.
- KWS to assist in controlling wildlife that turned to eating up crop.
- KRCS as lead agency to re-target their relief food beneficiary list to reflect the current harvest season.

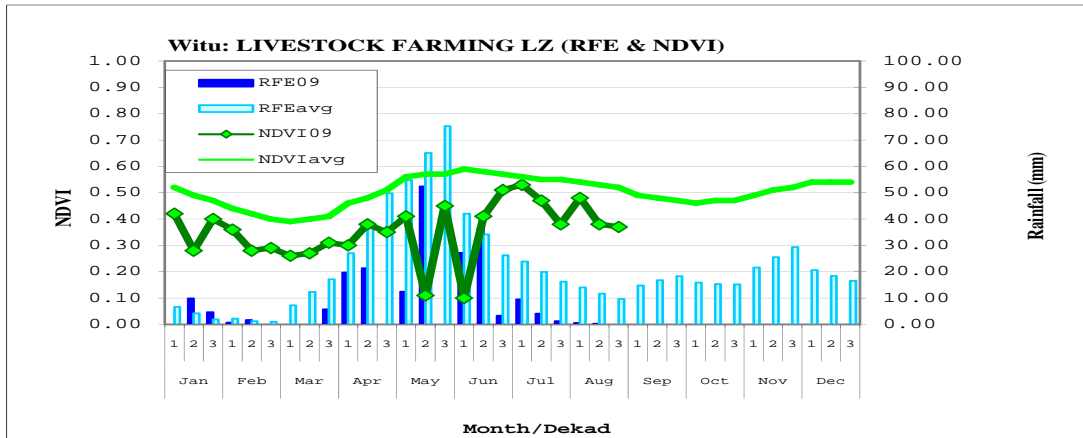
1.0 Environmental indicators (Stability)

1.1 Rainfall

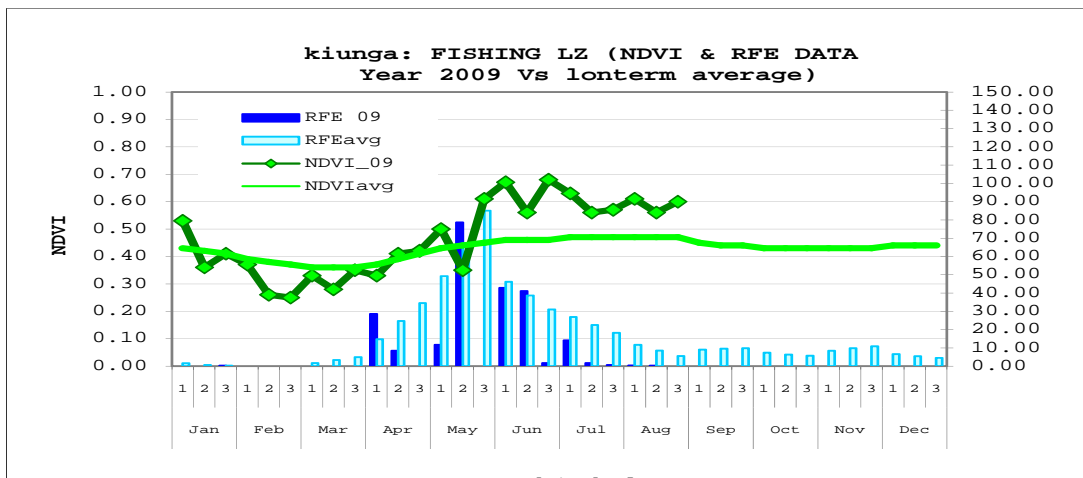


N=5 (i.e. 5 rain gauges across the District)

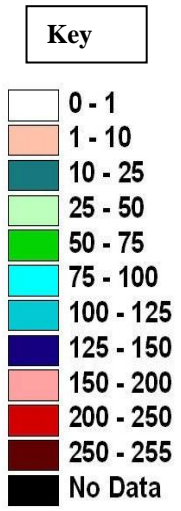
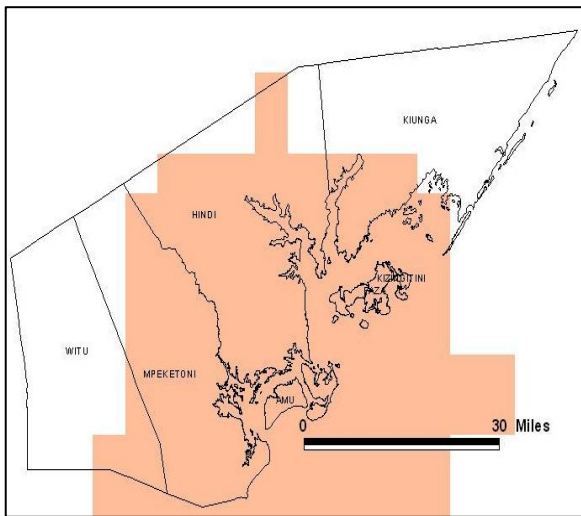
- The long rains decreased in intensity across the district this month, though sparsely distributed and in very low amounts as compared to long term average. The district received average 15.3mm of rainfall compared to same time long term average of 58.61 mm.
- This was not a normal trend across all the livelihood zones as shown by the long term average.



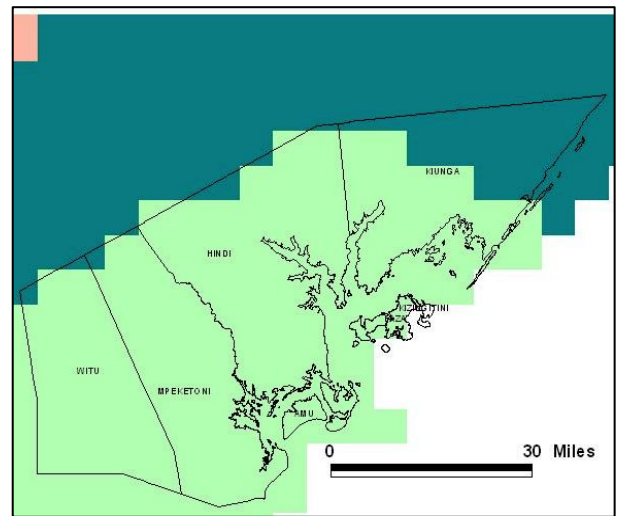
- Witu and Kiunga divisions in the extreme south and north parts of the district received little rainfall below 10mm for the three dekad of August as shown in the graph.
- On long term average the region received between 25-50 mm at the time of the year.



Lamu District Current Rainfall Distribution for August 2009

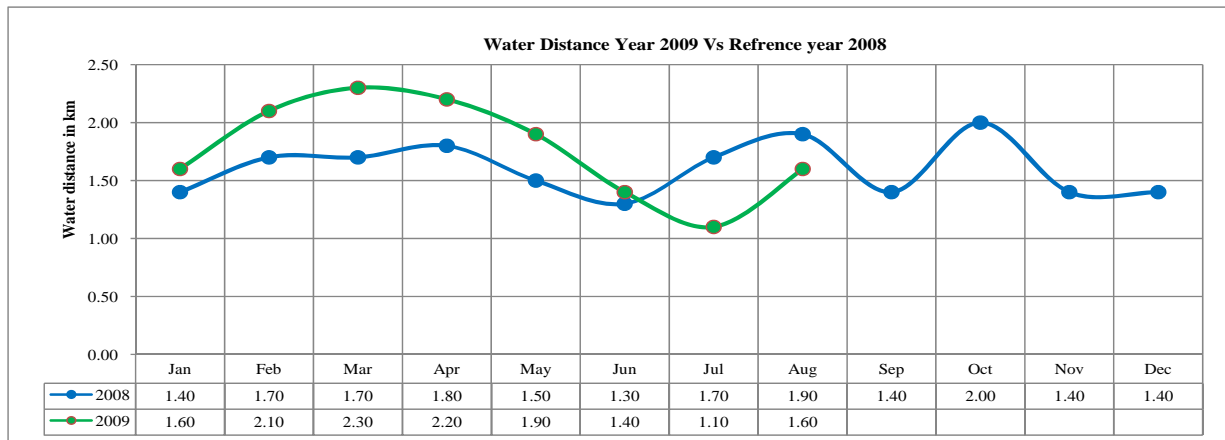


Lamu District Normal average Rainfall Distribution for August 2009



- As shown in the charts, the long term average was between 25-50mm or above while the current amount was between 1-10mm for most parts of the district.

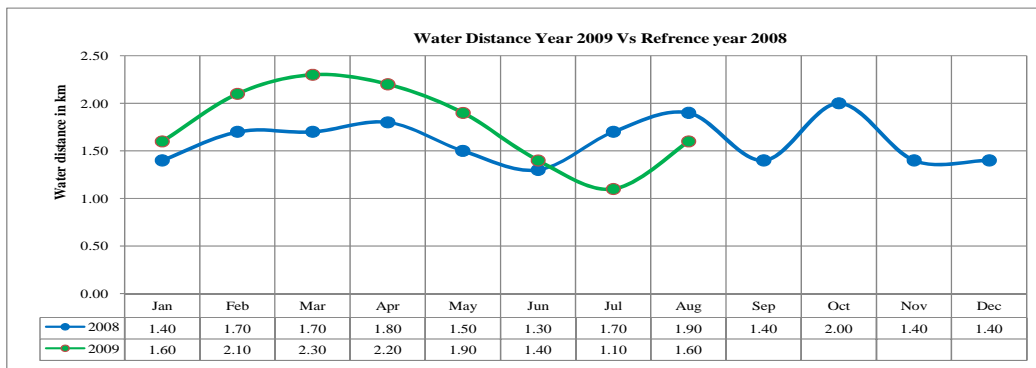
1.2 Condition of natural vegetation and pasture



N=11 (respondents from 11 field sites)

- Pasture and forage availability was good and average distances to grazing increased from 2.4 km previous month to 3.1 km due to ending of long rains season.

1.3 Water sources and availability



N=11 (respondents from 11 communities)

- The average distance to water sources was 1.6 km up from 1.1 Km in the previous month, and is increasing due to diminishing rainfall, resulting in strain in water accessibility.
- Shallow wells were the major household water source at 45.5%, followed by boreholes at 27%. This was however normal at the time of the year.

1.4 Emerging issues

1.4.1 Livestock migration

- The unreliability of the long rains season in neighboring districts made most immigrated livestock keepers to continue staying in the district while others still moved in.

1.5 Implications on food security

- Pasture and forage conditions continued to improve, leading to improved animal body condition.
- Distances to water sources also stabilized within the long term average, indicating that water accessibility also improved remarkably.

2.0 Rural economy indicators (Food availability)

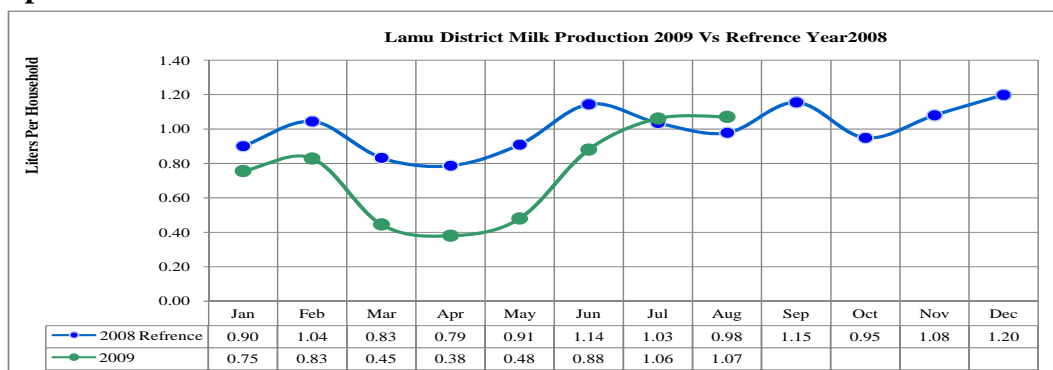
2.1 Livestock body condition

- The livestock body condition for cattle, goats and sheep improved and the trend is expected to worsen with the stop of the long rainfall season.

2.1.2 Livestock diseases

- There were no major livestock diseases reported in the district, though vaccination was ongoing for notifiable diseases.

2.1.2 Milk production



- Milk production averaged 1.07 liters per household per day, same as last month's production of 1.06 liters per household per day and is on an increasing trend. This was due to improved access to water and improved pasture availability and quality.
- Households in the mixed farming: food crops /cash crops livelihood zone produced the least amounts at 0.68 liters per household per day, while the livestock livelihood zone produced the highest amount of milk at 3.06 liters per household per day up from 2.8 liters previous month.
- That was, however, normal at the time of the year.

2.2 Crop production

- Harvesting of both cereals and legumes is ongoing though others are at the weeding stage.

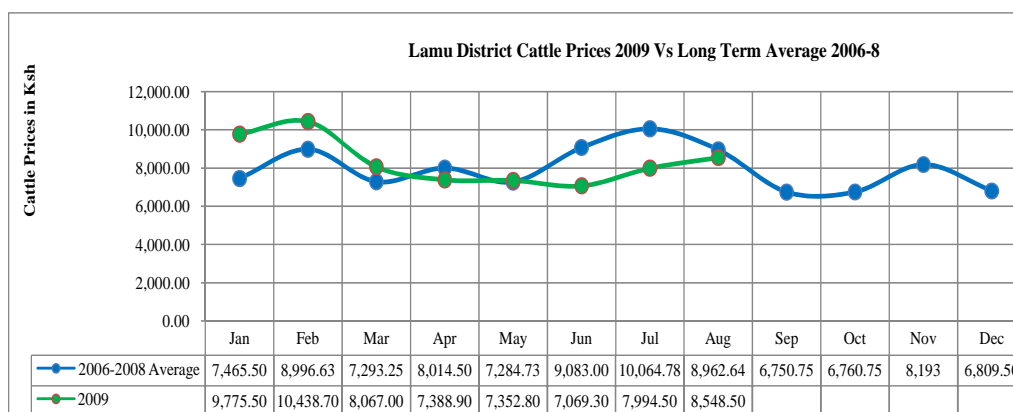
2.3 Implications on food security

- Increase in milk production was an indicator of improved milk availability and increased food security, especially for the pastoral/livestock livelihoods. Harvest of green maize was an indicator of stabilizing food source.
- Reduction in water distances improved its accessibility and reduced household vulnerability.

3.0 Access to food

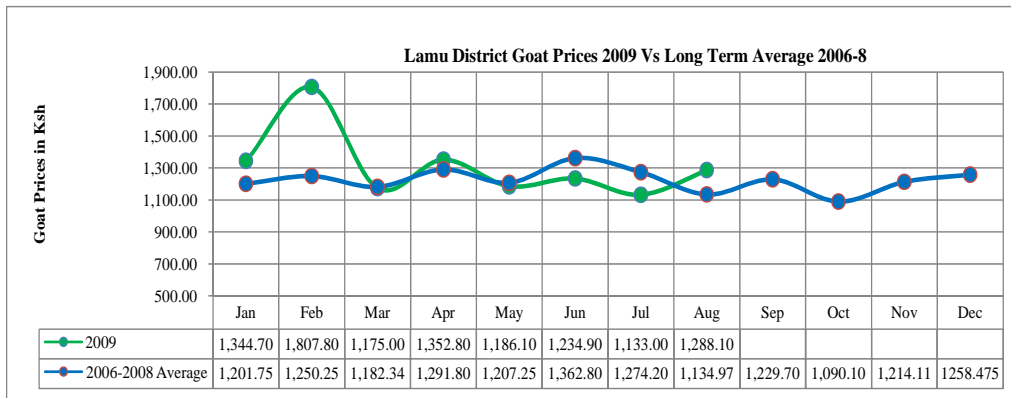
3.1 Livestock marketing

3.1.1 Cattle prices



- The average cattle price at farm-gate level was Ksh8,548.50, which was higher than previous month's price Ksh7,994.50. This was, however, similar to the price at same time of the long term average price of Ksh8,962.75 term.
- The stabilization was due to ongoing harvest season so less stock was offered for sale. Highest cattle prices were recorded in the mixed farming: food crops /cash crops livelihood zone at Ksh9,440 up from Ksh9,208 previous month, while the livestock farming livelihood zone recorded the lowest at Ksh7, 657.10 up from Ksh6, 780 previous month, showing an improving trend. This was due to improved livestock body condition and onset of harvest season.
- This was, however, a normal trend at the time of the year, going by 2006-8 average.

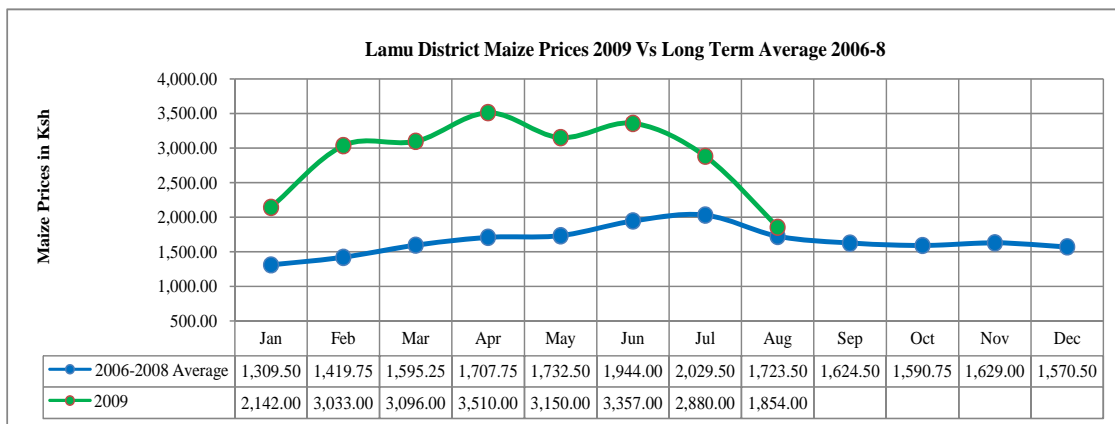
3.1.2 Goat prices



- The average goat price at farm-gate was Ksh1,288, which was lower than that of last month at Ksh1,334 but higher than that of same time in the year 2006-8 average of Ksh1,134.97.
- This was normal trend at the time of the year going by the 2006-8 long term average. Lowest prices were recorded in the livestock livelihood zone at Ksh1,020 while the highest were recorded in the mixed farming: cash crops/food crops/ horticulture at Ksh1, 444.

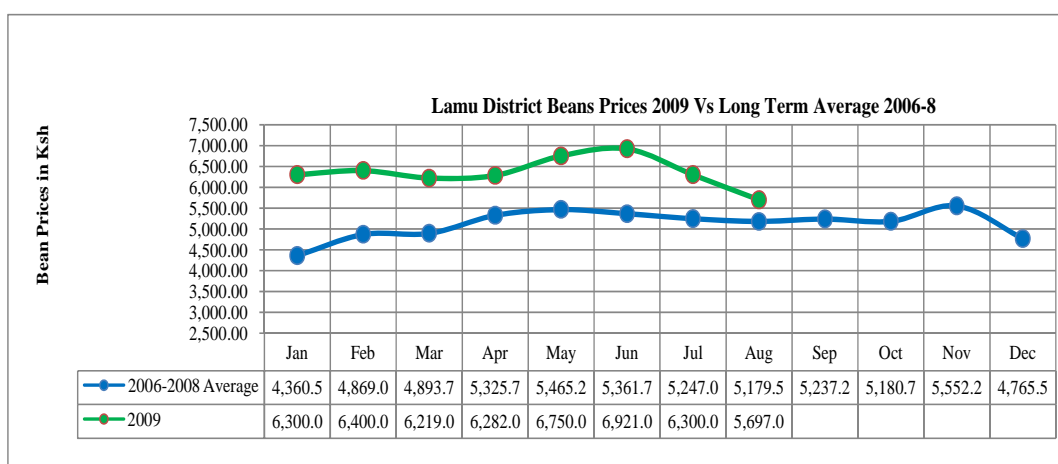
3.2 Crop prices

3.2.1 Maize prices



- Maize prices at market level averaged Ksh1,854 per 90kg bag, lower than last month's price of Ksh2,880 due to availability of green maize and ongoing harvest season.
- This was near similar to the price at the same time of the long term average of year 2006-8 of Ksh1, 723.50, showing a stabilizing trend. Highest maize prices were recorded in the mixed farming: cash crops/food crops/ horticulture livelihood zone at Ksh2,016 while the lowest were recorded at the mixed farming: food crops /cash crops livelihood zone at Ksh1,620.

3.2.2 Beans prices



- Average price of beans at market level was Ksh5, 697 per 90Kg bag, which was lower than that of last month at Ksh 6,300 and higher than the long term average of year 2006-8 of Ksh 5,197. 50.
- This was, however, normal trend at the time of the year in the district going by 2006-8 average. The prices were recorded only in the mixed farming: cash crops/food crops/ horticulture livelihood zone.

3.3 Income

3.3.1 Crops income

- Income from crops accounted for 12% of total house hold income, higher than last month's rate of 10.5%. This was however normal at the time of the year.
- The highest rate was recorded in the mixed farming: food crops/cash crop livelihood zone and the lowest recorded in the livestock livelihood zone.

3.3.2 Livestock income

- Sale of livestock accounted for 5.2% of total household income near half of previous month's rate of 9.7% while livestock products accounted for 4.8% down from 6.4 % previous month.
- This was mainly attributed to the harvest season hence low animals offered for sale. This was however normal at the time of the year.
- Incomes were mainly realised from mixed farming: food crops/cash crop livelihood zone with least sales realised in the mixed farming: cash crops/food crops/ horticulture livelihood zone.

3.3.3 Other income

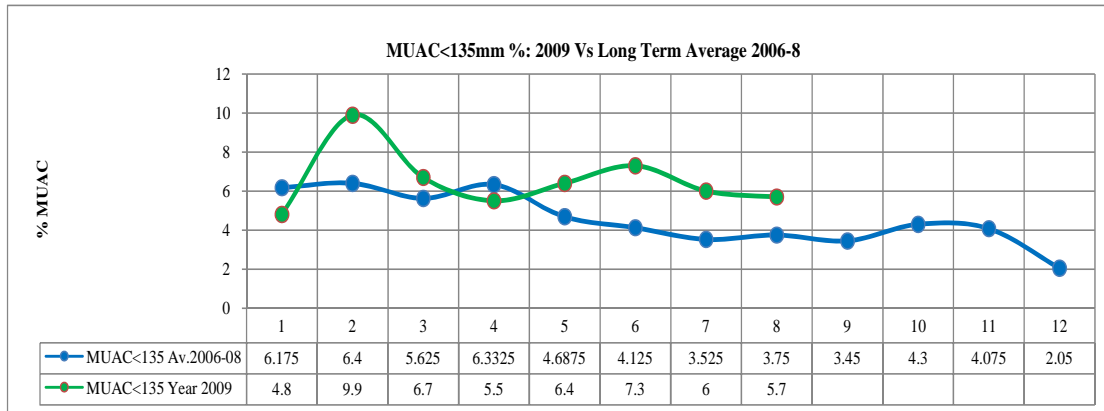
- Casual labour was the main source of income during the month accounting for 51% up from 49.51% previous month of the house hold income.
- Petty trading accounted for 12.3 % of the total household income emerging as livelihood source.
- The highest rate was recorded in the mixed farming: food crops/cash crop livelihood zone and the lowest recorded in the livestock livelihood zone.
- This is however normal at this time of the year.

3.4 Implications on food security

- The increase in crop sales dependency shows its availability has improved while the decrease in livestock sales dependency indicates other livelihood sources, hence value for livestock has improved.

4.0 Human welfare indicators (Utilization of food)

4.1 Nutrition Status



N= 1115 Children

- The percentage of children in the district with MUAC levels less than 135mm was 5.7%, which was lower than last month's 6% and also higher than the 2006-8 long term average of 3.75% . This was an indication of an improving nutrition status due to ongoing harvest.
- The livestock farming livelihood zone reported the highest rates at 11.5%, higher than previous month's level of 10.0%. The farming: food crops/cash crop livelihood zone reporting the lowest at 2.4 % up from 1.6% previous month, indicating slight drop in nutrition status, but a stable food security situation across all livelihood zones, except the livestock livelihood zone that is still recovering from effects of the drought.
- This was however a normal trend.

5.0 Current interventions

5.1 Food aid

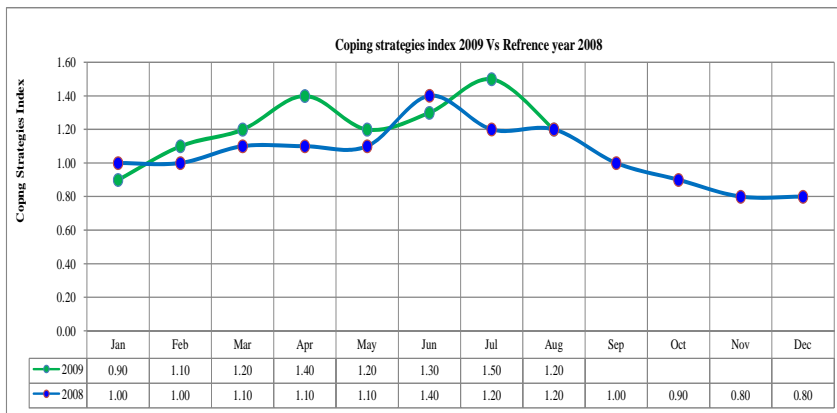
- EMOP was underway and the lead agency reported distribution.

5.2 Non-food interventions

- KWS helped farmers ward off wildlife that posed a threat to standing crop.

5.3 Coping strategies

The coping strategy index was at 1.2 down from previous month's 1.5. The highest index of 1.8 was recorded at the mixed farming: Cash crops/food crops/ horticulture livelihood zone while the lower of 1.0 was recorded in the livestock farming livelihood zone.



6.0 Recommendations to DSG and KFSM

- The DLPO and DVO to address issues of livestock diseases and pastures by incoming livestock from neighboring Ijara and Tana River Districts.
- KWS to assist in controlling wildlife that turned to eating up crop.
- KRCS as lead agency to re-target their relief food beneficiary list to reflect the current harvest season.