

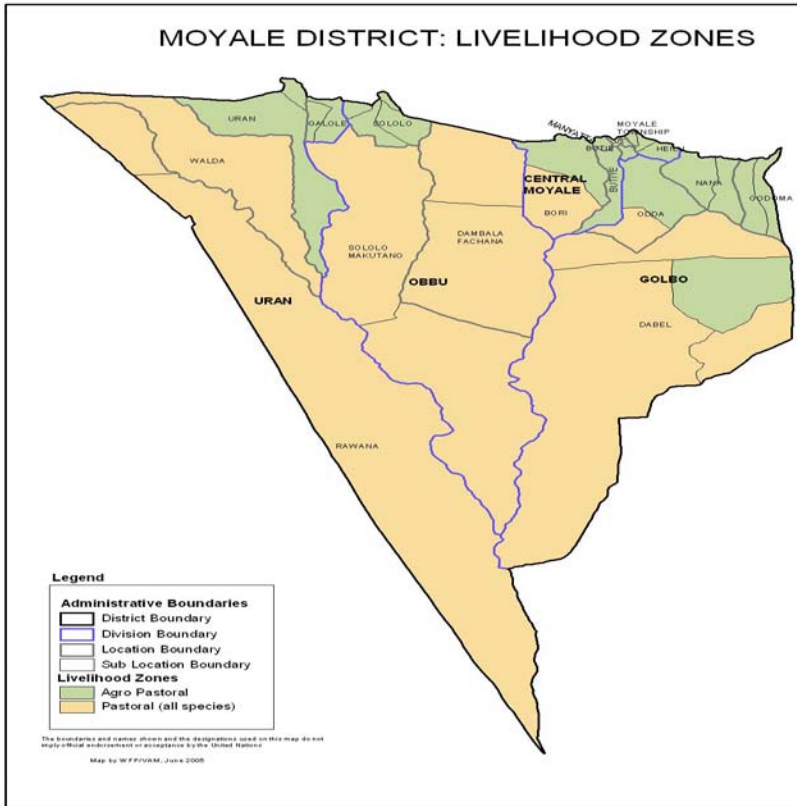


**OFFICE OF THE PRIME MINISTER
MINISTRY OF STATE FOR THE DEVELOPMENT OF NORTHERN KENYA AND OTHER ARID LANDS
ARID LANDS RESOURCE MANAGEMENT PROJECT II**

DROUGHT MONITORING BULLETIN, AUGUST 2009

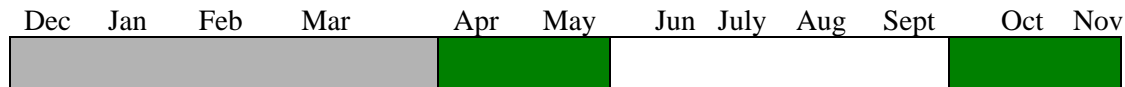
Moyale District

Warning Stages



Livelihood Zones	Stage	Trend
Pastoral Zones	Emergency	Static
Agro-Pastoral Zones	Emergency	Static
Casual Labour, Small Businesses	Alarm	Static
District	Emergency	Static

Seasonal calendar



Situation overview

- There were no rains over the reporting period. The weather turned hot over the last dekad of the month, with scarce cloud cover at night.
- Forage became extremely scarce in all livelihood zones, with some range units getting denuded with frequent dust storms covering the atmosphere.
- The few heads of livestock kept behind were depending on purchased dry hay (for those who can afford) but some of the grazers are dying. These deaths were mainly in Golbo and Uran divisions.
- Water availability worsened over the month and became very expensive. All pans and dams dried up and people trekked very long distances to water points, spending long hours waiting to refill their containers or watering herds.
- Cattle in the district were on the brink of extinction but goats and camels might survive till the rains though some diseases were killing goats.
- Some settlements remained abandoned as people moved away as a result of the drought. These were Amballo and Badan Rero in Obbu division, Banale in Uran division and Guyo Timo in Golbo division. Other smaller mushrooming settlements were broken due to harsh drought situations.
- Livestock prices went down by quite a large margin, almost 25%. This was expected considering the accelerating drought phase. Cattle were sold at an average of Ksh6,916.7 while goats were sold at Ksh1,250. The previous month's prices of cattle and goats were Ksh8,025 and Ksh1,424.50 for cattle and goats respectively.
- Mortality rate was quite high in cattle and sheep as their natural feed strata diminished due to lack of rains. Cattle mortality was 9.4%, while sheep was 9.0%.
- Birth rates were also lower than last month and recorded at 5.8% in cattle and 9.2% in goats.
- Sales rates were higher in cattle than in goats. The recorded percentage was 3.1% in cattle and 2.5% in goats. This was not expected during normal year and only happens under extreme drought situation where pastoralists sell their herds fearing their demise.
- The nutrition status of children below five years remained static with no improvement but quite high at 34.2%.

Current interventions

Non-food interventions

- Some settlements received water through water bowsers of Water Department and ALRMP II. Army trucks also assisted by ferrying jericans to Holale wells on limited scale.

Food aid

- Improved and slightly increased food rations were distributed to all centres in the district. The number of beneficiaries was also increased by villagers willing to share the rations.
- CIFA (World Concern) continued to purchase and distribute food to all centres to those families who are disadvantaged and affected by food shortage.
- Out-patient therapeutic feeding was available at the district Hospital and other Health Centres.

Recommendations to DSG and KFSM

- More food relief is required and distribution should include more people.

EWS BULLETIN, AUGUST 2009 /MOYALE DISTRICT

- Food supplements should be increased to reverse the worsening malnutrition rates.
- Pastoralists should be aided with hay and other livestock feeds as pasture availability continues to diminish.
- The district requires more water bowsers as the one in the district cannot support the needs of the district.
- The much denuded areas in the district require some form of rehabilitation to avoid erosion and destruction during the next rainy season.
- The communities in the region, especially those in agro-pastoral area require much capacity building in matter of Natural Resource and Environmental protection to improve their resource base.
- Destruction of catchments was rampant and needs to be discouraged as several streams and acquifers are getting dry.

1.0 Environmental indicators (stability)

1.1 Rainfall

- There were no rains over the month. This was normal as the month is usually a dry one. Elders predicted that the rains might come early as shown by some cultural signs. This will be a blessing to the weakened livestock and will relieve families affected by water shortage at home.

1.2 Condition of natural vegetation and pasture

- There were no sites of standing pasture in the district. All pasture reserves and fenced plots were depleted. Browse for camels and goats was available on border escarpment foot slopes.
- This area faced high influx of herds from all surrounding locations, especially Wajir District. The zone is also known for high tick infestation. Conflicts might flare up between the local communities and invading tribesmen over the scarce resources.
- Forage quality was very poor – brittle and dry with no crude protein. There has been no succulent pasture for the last three months. Pasture was very limited. Grasses and forbs all dried up, though some limited browse was available.

1.3 Distances to grazing areas

- Average distance to water reduced to 18.1km. The decrease was caused by weakened livestock which cannot move further in search of pasture.

1.3.2 Household access to water

- Household access to water varied from one area to another. Some areas in Obbu division were unable to access water completely. Examples of these centres were Garba, Amballo and Badan rero. The nearest sources of water for these centres ranged from 25Km for Garba to over 100km for Badan rero. Areas like Sololo Makutano, Golole and Madho

Adhi moved about 20km to water sources and spent long hours at these sites waiting to be assisted by passing vehicles to carry their water containers. The average time spent at water sources was 3.8 hours.

1.4 Emerging issues

1.4.1 Livestock migration

- Owners of migrated herds complained of livestock thefts, which were at times not recovered, and lack of water and food (for herders). Water was too expensive and inaccessible due to congestion and recurring costs caused by frequent watering intervals. This problem can only be solved by the coming of rains.

1.4.2 Livestock deaths

- Several cattle were reported to have died in Golbo division as lack of pasture and longer distances to water caused stress on young stock, especially one-year-olds and two-year-olds. Some herders opted to slaughter the new-borns to save their mothers.

1.4.3 Malnutrition rates

- Malnutrition trend seems to be rising from month to month and the situation might worsen in the next few months. The district requires much needed supplements than any time of the year to reverse this trend.

2.0 Rural economy indicators (Food availability)

2.1 Livestock production

2.1.1 Livestock body conditions

- Body condition of all livestock species deteriorated compared to the previous month. This was expected due to accelerating drought status. Cattle and sheep were the worst affected due to their feeding regime. Camels and goats, though weakened, still had fair body conditions.

2.1.2 Livestock health

All livestock mortalities were as a result of drought and predation.

2.1.3 Milk production

Total milk produced over the month was recorded as 13.9 bottles of 750ml. This was the lowest production recorded.

2.2 Crop production

There were no crops in the field or crop residues anywhere in the district.

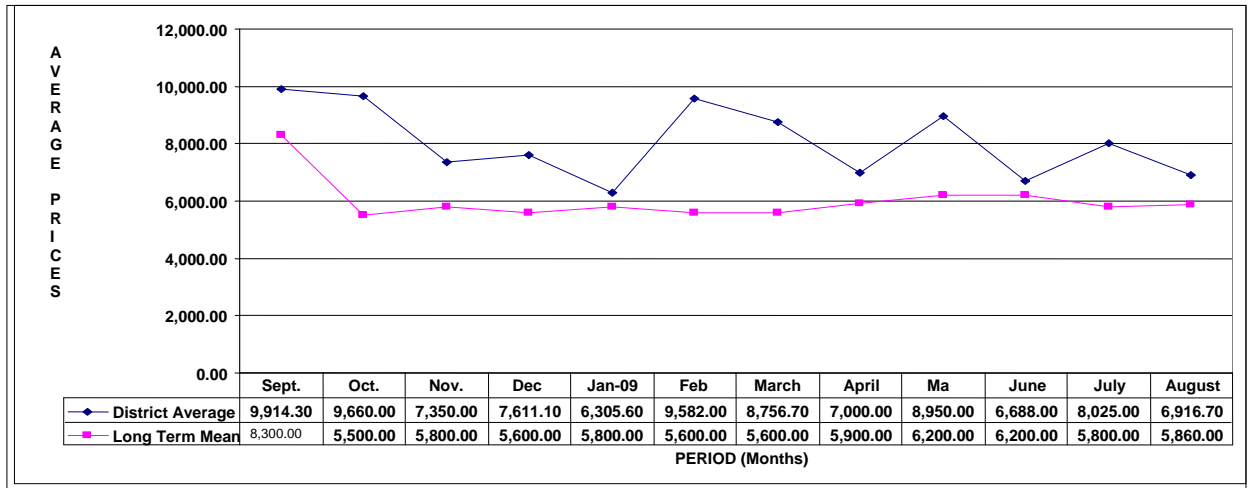
3.0 Access to food

3.1 Livestock marketing

3.1.1 Cattle prices

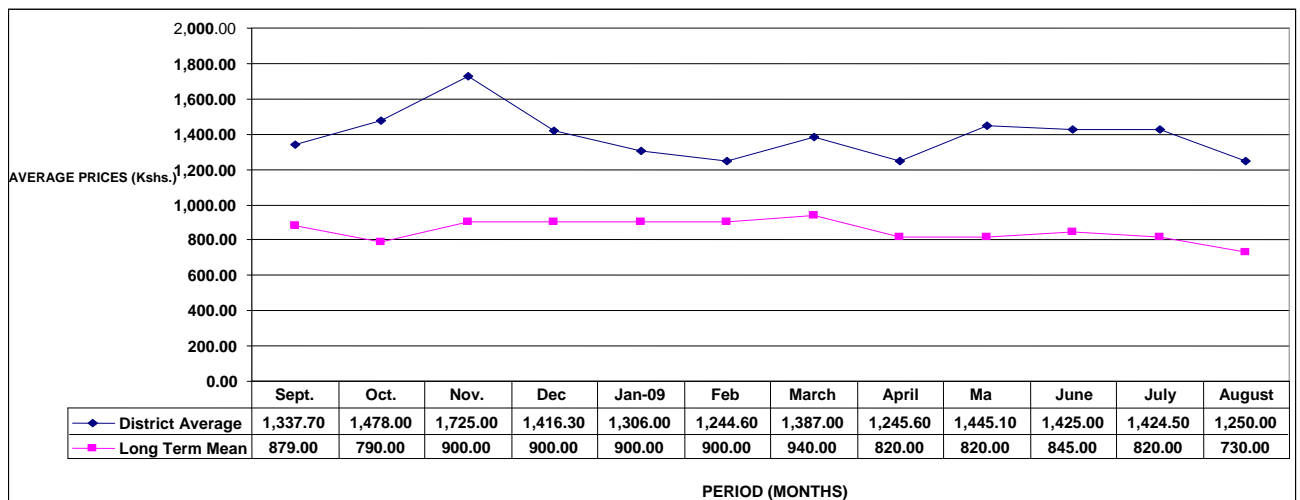
- Prices of cattle reduced by quite a large margin from Ksh 8,025 in July to Ksh6,916.70.
- This was due to fears by buyers and sellers disposing many livestock because of the drought condition.

Cattle prices for the month of August 2009



3.1.2 Goat prices

Goat prices for the month of August 2009



- Prices of goats and sheep dropped by almost similar percentage caused by high influx into the market. The average goat price was Ksh1,250, down from Ksh 1,424 in July.
- Most sales are for the purchase of essential foodstuffs.

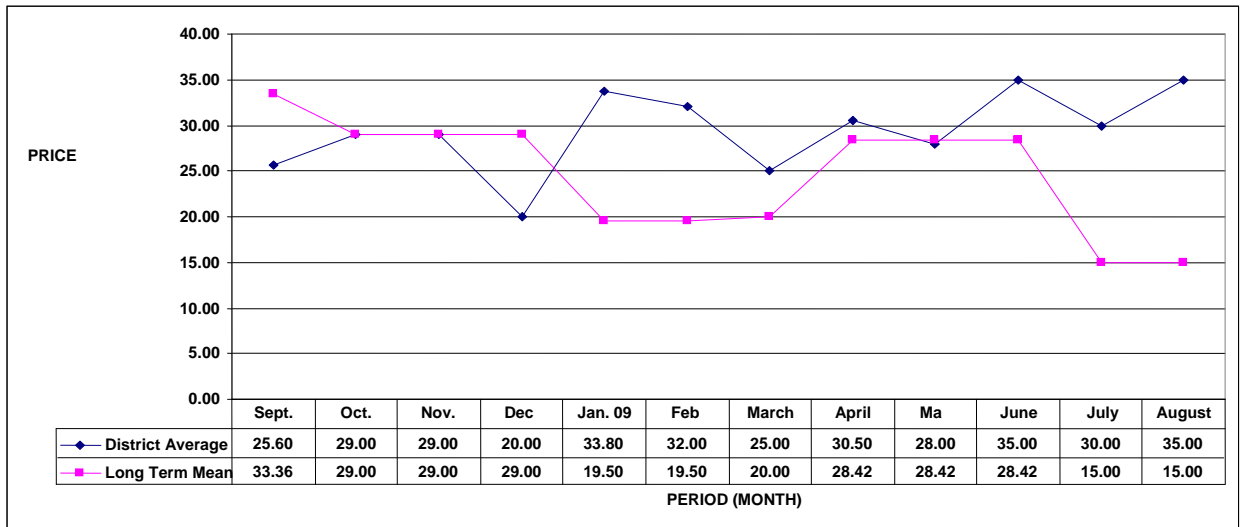
3.1.2 Camel prices

- Prices of camels continued to improve as buyers and exporters flooded the local border market. A mature animal in good condition traded at Ksh70,000, while a fairer one sold at Ksh 45,000. An immature or female in poor condition sold cheaply at Ksh18,000 to Ksh12,000.

3.2 Food prices

3.2.1 Maize prices

Maize prices for the month of August 2009

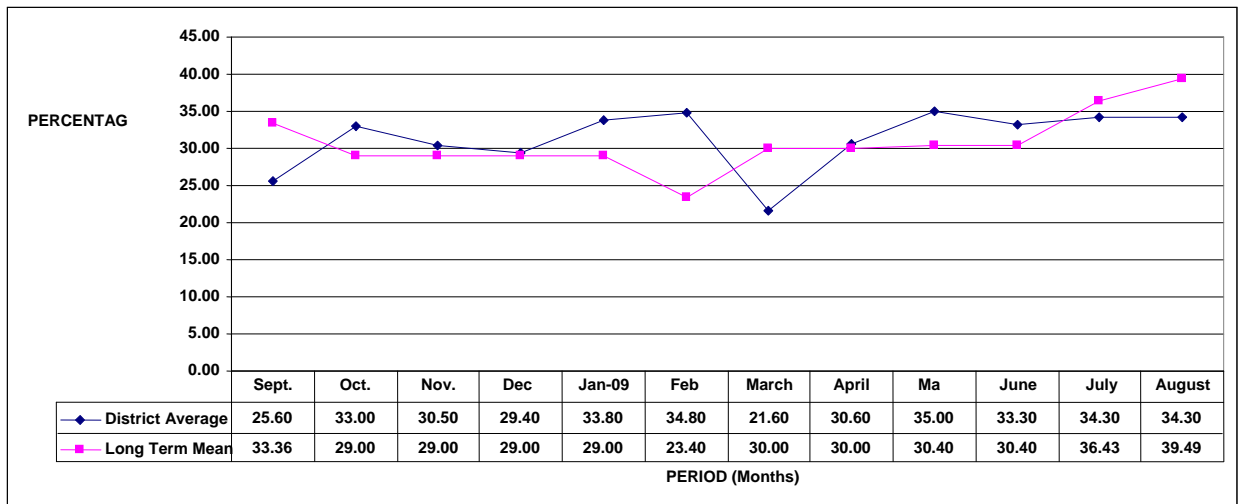


- Prices of maize rose to Ksh35 per kilo, up from Ksh30 last month. This was due to decreased accessibility in the market.

4.0 Utilisation of food

4.1 Nutrition status

Nutrition status of children under the age of 5 years for the month of August 2009



- The nutrition status of children below five years remained static compared to the previous month. The condition was controlled through the therapeutic outpatient feeding and food rations supplied by CIFA to much disadvantaged families.
- The worst hit areas were Dabel, Mado Adhi and Godoma.

4.2 Human Health

- The major ailments reported were malaria and common colds. The situation was exacerbated by the cold dry weather, which persisted till mid August. Poor diet and reduced meal sizes aggravated the situation and this might worsen when the rains start towards the end of the month.

4.3 Flagged areas

- Almost all parts of the district were food insecure at the moment, though the situation was worse in Dabel, Mado Adhi and Godoma sample areas.

5.0 Current interventions

5.1 Non-food interventions

- Some settlements received water through water bowsers of Water Department and ALRMP II. Army trucks also assisted by ferrying jericans to Holale wells on limited scale.

5.2 Food aid

- Improved and slightly increased food rations were distributed to all centres in the district. The number of beneficiaries was also increased by villagers willing to share the rations.
- CIFA (World Concern) continued to purchase and distribute food to all centres to those families who are disadvantaged and affected by food shortage.
- Out-patient therapeutic feeding was available at the district Hospital and other Health Centres.

5.3 Coping strategies

- All the herds that migrated to Ethiopia remained there as condition had not improved in the rangelands.
- Pastoralists tried to sustain the livestock that remained behind through purchasing of scarce and expensive dry hay. A human back load cost at least Ksh1000.
- Many households opted to reduce their meal times and size, while others opted for cheaper foodstuffs. Others were restricting food to only children, especially the evening meal.

6.0 Recommendations to DSG and KFSM

- More food relief is required and distribution should include more people.
- Food supplements should be increased to reverse the worsening malnutrition rates.
- Pastoralists should be aided with hay and other livestock feeds as pasture availability continues to diminish.
- The district requires more water bowsers as the one in the district cannot support the needs of the district.
- The much denuded areas in the district require some form of rehabilitation to avoid erosion and destruction during the next rainy season.
- The communities in the region, especially those in agro-pastoral area require much capacity building in matter of Natural Resource and Environmental protection to improve their resource base.

- Destruction of catchments was rampant and needs to be discouraged as several streams and aquifers are getting dry.