

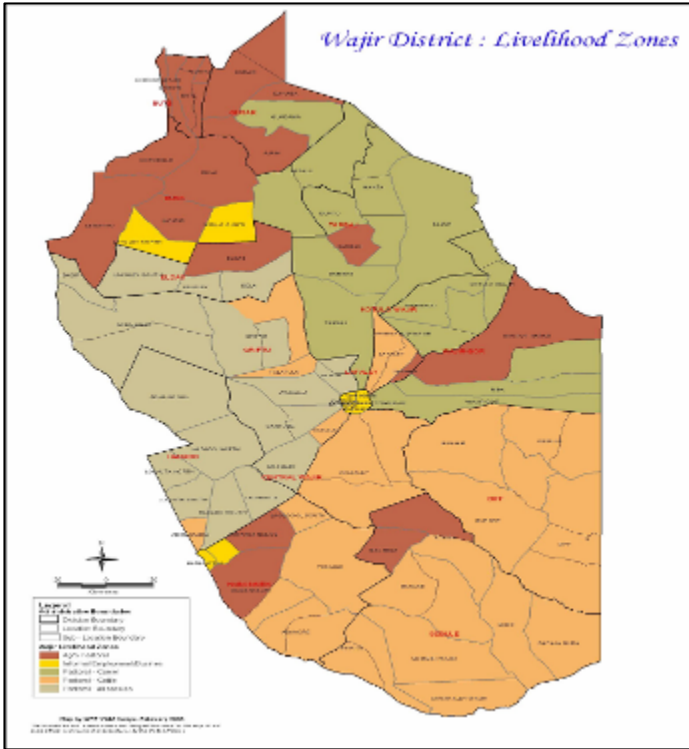


**OFFICE OF THE PRIME MINISTER
MINISTRY OF STATE FOR THE DEVELOPMENT OF NORTHERN KENYA AND OTHER ARID LANDS
ARID LANDS RESOURCE MANAGEMENT PROJECT II**

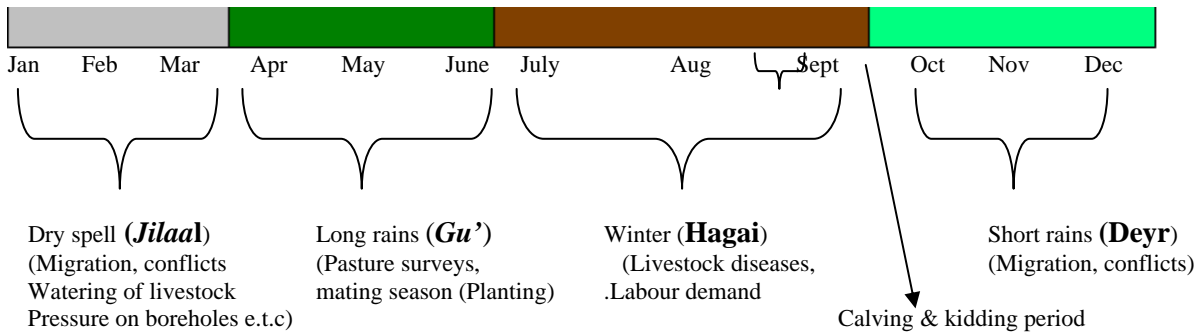
DROUGHT MONITORING BULLETIN, AUGUST 2009

Wajir District

Warning Stages



Livelihood Zone	Warning Stage	Trend
Pastoral – All Species	Alarm	Worsening
Pastoral – Cattle	Alarm	Worsening
Pastoral – Camel	Alarm	Worsening
Agro – Pastoral	Alarm	Worsening
Informal Employment/Business	Alarm	Worsening



Situation overview

- No rainfall was received in the district during the month under review and the dry season progressed. Pasture condition continued to decline and the few existing got depleted due to overgrazing. The pasture scarcity resulted in long trekking distances estimated at 60-70km for camels/cattle and 30-40 for sheep/goats.
- Water availability also continued to decline. Donkeys and camels used for fetching water were too weak and trekked for about 100km. The number of sites for water trucking increased to 62 centers including Ogoralle, Gunana, Elyunis, Majabow, Wajir-Bor, Haragal, Sitawario, Belatul Amin and Burmayo in Wajir East, Wara, Hubsoy, Madahbaqay, Handaki, Qanjara and Ibrahim- Urey in Wajir South, Qudama, Lekole north, Ingirir, Milsided, Hote, Lesayu in Wajir North Basir, Lolkuta North, Hadado, Basir, Anole, Juqale, Boa, Adan- Awale, Bojiheri, Barmish in Wajir West, Shimbirbul, Kutulo, Berjini and Hadado.
- Livestock deaths/mortality were reported at 15% for cattle, sheep and goats and their body conditions continued to deteriorate as the result of long trekking distance. Cases of CCPP, PPR and worm infestation were reported, especially in the greater Wajir District. Livestock moved to Lekole in Wajir west and Hadado, Wel- Athi, Konton in Wajir east and Gerile in Wajir south.
- Livestock prices continued to reduce in local markets due to the poor body condition, prolonged drought and loss of purchasing power by the community. Camel prices reduced to Ksh8,250 from Ksh 8,318, cattle from Ksh6,290 to Ksh 6,100 and goats from Ksh1,100 to Ksh1,050.
- The main causes of morbidity and mortality for humans in the district remained malaria, URTI, intestinal worms, malnutrition, diarrhoea and kKalazar. Cases of dermatitis were on the increase due to acute shortage of water.
- The availability and supply of milk continued to decline as the prices of milk in local markets increased to average of Ksh 80-100 per 750mm bottle of milk. Few households were buying powdered milk from shops in Wajir for tea but others took tea with no milk. Majority of households in urban areas opted for powdered milk.
- Food availability was poor and commercial foods prices continued to escalate, especially sugar which is highly consumed by Somali pastoralists. Prices of commercial foods increased in the local markets, especially sugar at Ksh100 per kilo, beans at Ksh80 per kilo and unsifted maize meal at Ksh57 per kilo.
- The nutrition status of children below 5 years (based on MUAC < 135mm) continued to decline, with the percentage of those rated at risk of malnutrition rising to 34.2% from 34% in July.
- EMOP is expected to continue with increase in target beneficiaries from the current 176,363 out of a total population of 562,271 in the greater Wajir District.
- The security situation was calm and there were no reported cases except few individual conflicts over water and pasture.
- The situation was at 'alarm' stage while all indicators continued to deteriorate with acute decline in all indicators.

Recommendations to DSG and KFSM

- Provision of emergency water or drilling of contingency boreholes at identified fallback areas during the RAT (Walanri, Ogoralle, Diff, Likole, Matho and shimbirbul). (Action-Water/ALRMP/Regional dev/KRCS).
- Ensure all boreholes are operational at optimum level including repair of the existing ones and ensuring that they are functional.
- Purchase of tools for borehole maintenance team and repair of water bowsers.
- Provision of stand by gen-set, submersible pumps, fast moving spares and fuel subsidy for emergency drought mitigation measures.
- Provision of relief hay and livestock concentrate.
- Allocate emergency funds for mass vaccination of small stocks against PPR and CCPP in the entire district.
- Up scaling of outreach activities (Immunization and treatment of minor illnesses) especially to water trucking Centres.
- Strengthening of peace conflict mechanism especially to areas with high concentration Danaba/Dandu, Gireille/Somalia border, Kutulo and along Wajir – Marsabit border.
- Increase food aid targets to 75% of the population considering the poor purchasing power of the pastoralist.
- Provision of contingency fund for drought mitigation due to the failure of the long rains.(Action :ALRMP/OXFAM).
- Carry out de-stocking programme (livestock off-take) especially cattle and shoats.(Action MoLD/OXFAM, VSF/ALRMP/KRCS).

Current interventions

Food aid

- EMOP by world food program/GOK through the lead Agency Aldef-Kenya and implementing agency Wasda.
- School feeding program supported by WFP is ongoing.
- Nutritional supplementary program by Merlin in Wajir west/North and Save the Children UK in Wajir East and South.
- Hunger and Safety Net program (H SNP).

Non -food interventions

- Support to emergency borehole repairs, replacement of submersible pumps and repair of engines and replacement of draw pipes and fuel subsidy by (ALRMP.)
- Emergency water trucking to centres and fall back areas with pasture by Oxfam, Almp, CDF and Water.

1.0 Environmental indicators (stability)

1.1 Rainfall

No rainfall was received during the month under review and the dry season progressed.

1.2 Condition of natural vegetation and pasture

The quantity and quality of pasture and vegetation cover deteriorated as the season progressed, with inward migration of animals from Eastern and Mandera district, especially around Konton, Gerile and Lekole.

1.3 Water sources and availability

- Over 62 centers were depending on water trucking including Ogoralle, Gunana, Elyunis, Majabow, Wajir-bor, Haragal, Sitawario, Belatul Amin and Burmayo in Wajir East, Wara, Basir, Lolkuta North, Hadado, Basir, Anole, Jugale, Boa, Adan-awale, Bojiheri, Barmisha in Wajir West, Shimbirbul, Hubsoy, Madahbaqay, Handaki, Qanjara and Ibrahim-urey in Wajir South, Qudama, Lekole North, Ingirir, Milsided, Hote Lesayu in Wajir North. The major sources of water for animals were boreholes since all pans and dams have dried up, while the trekking distances increased to an average of 60-70km for large stock and 30-40km for small stock.

1.3.1 Household access to water

- Accessibility of water at household continued to be nightmare, especially in areas with acute water shortage where 20 litter jerrican cost Ksh20-40 and the trekking time of 16-18 hours. Convoys of donkey carts ferrying water were noted, especially between Arbajahan, Matho and Boji. Even weak animals were watered using donkey carts.

1.4 Emerging issues

1.4.1 insecurity/conflict/Human displacement

- Increase in commercial food prices like maize, sugar and wheat flour.
- The security situation was calm and there were no reported cases except a few individual conflicts over water and pasture.
- Cases of kwashiorkor and Marasmus were reported in major health facilities including Wajir District hospital, Khorof Harar and Griftu.

1.4.2 Migration

Livestock that had migrated to Ethiopia and Somalia moved back to areas with high yielding boreholes. This over stretched resources especially in Konton, lekole and Hadado.

1.4.3 Implication on food security

- The low targeting of food aid, failure crops in all the divisions, increased prices of commercial foods and sugar and the poor prices of livestock will affect the purchasing power of the pastoralists hence food insecurity.
- Recurrent droughts in successive years resulted in no harvests, impacting negatively on food security.
- Lack of irrigation techniques and little manpower also had a negative impact on food security.

2.0 Rural economy indicators (Food availability)

2.1 Livestock production

Livestock production was still low due to drought-related stress.

2.1.1 Livestock body condition

- Livestock body condition for cattle, sheep and goats deteriorated due to inadequate browse, pasture and the long trekking distance for water and pasture. In some areas cattle were too weak to stand and graze and had to be fed at household level especially in Tarbaj division. Household expenses increased as a result of buying/purchasing alternative feeds for the weak animals.

2.1.2 Livestock diseases

- Diseases like PPR and CCPP were reported, especially at Eldas while suspected cases of haemorrhagic septicemia were reported in Dadajibula and Diif.
- Deaths of cattle were reported in Salemaa due to thirst. Worms and lack of nutrients in animals were also reported.

2.1.3 Milk production

- Milk prices increased and the availability of the commodity reduced, especially in areas affected by migration. Some pastoralists turned to powdered milk.

2.2 Crop production

There were no crop production activities except garden farming through small-scale irrigation, especially in Wajir central.

2.2.1 Timeliness and condition of various crop production activities

- Crops failed due to inadequate rainfall and the community lost hope of dry land farming. However, Wajir central community used water from shallow wells for small-scale irrigation, especially vegetables. Vegetables were grown in small irrigation schemes in Wajir central.

2.2 Pests and diseases

No diseases and pests were reported during the month under review.

2.2.3 Harvests

There was no harvest from rain-fed crops but there was little harvest from kitchen gardens, especially in Wajir central.

2.2.4 Implications on food security

- Poor or failure of the long rain season will have a negative impact on food production, livestock body condition, escalating prices of food staff, Poor livestock prices and generally on the food security situation in the Districts.
- Low livestock prices will similarly have a negative set back to the pastoralist purchasing power.
- Low or non intake of milk will have negative impact especially to the children and the aged leading to high malnutrition rates.
- Poor purchasing power of the pastoral communities in relation to the prolong drought will have a negative impact.

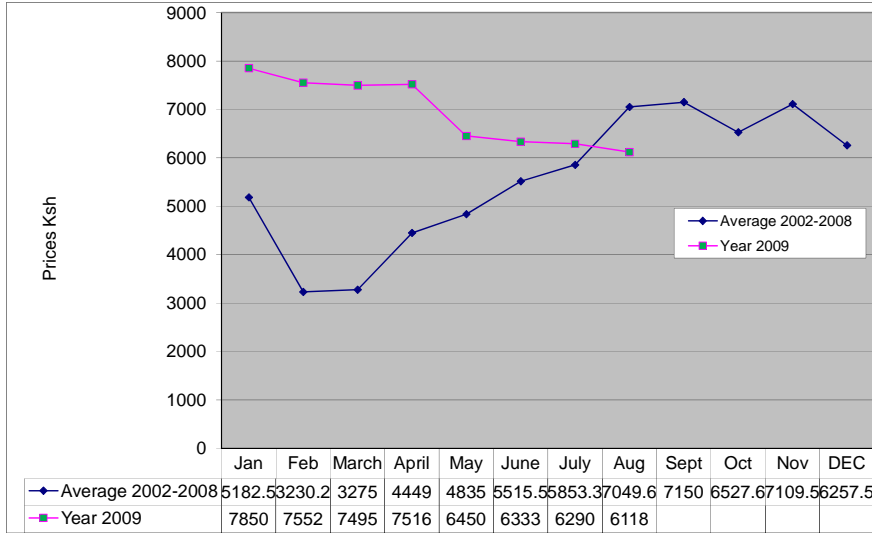
3.0 Access to food

3.1 Livestock marketing and sales

Livestock prices were poor for all species while the demand was low due to the body condition. The expected prolonged drought coupled with shortage of water is expected to make the situation worse.

3.1.1 Cattle prices

The graph shows cattle long term mean prices against current year 2009

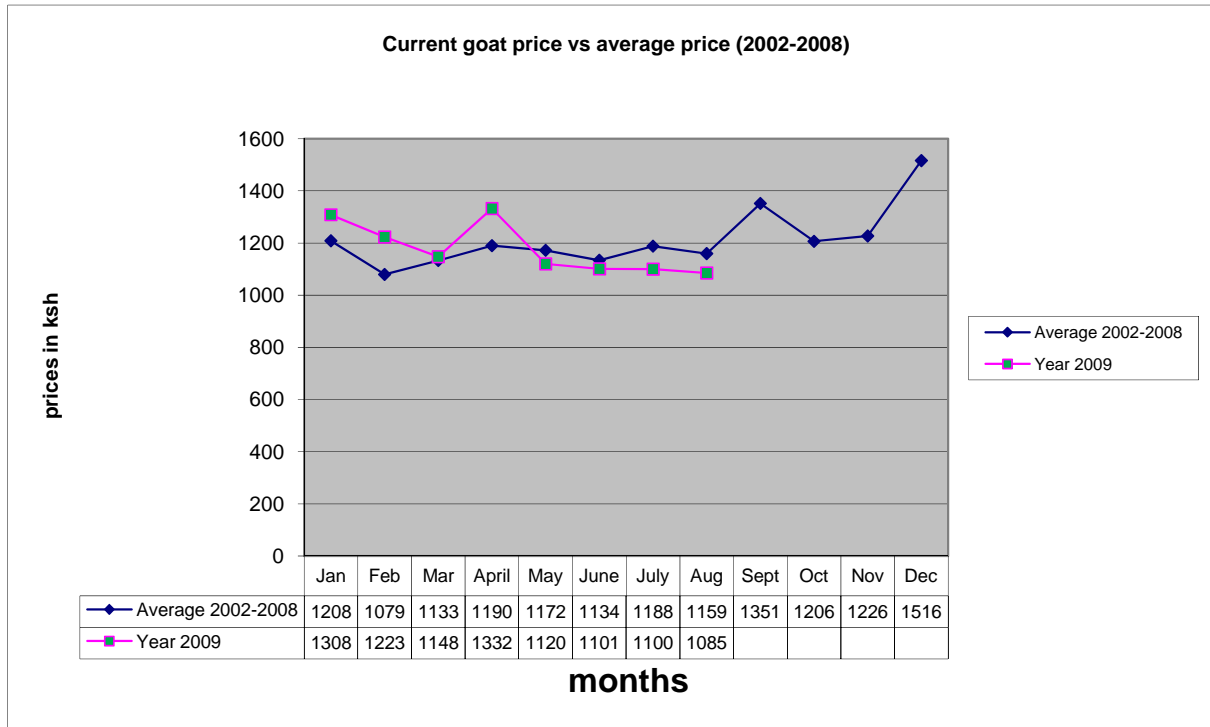


N= 420

- Cattle prices reduced slightly in local markets from Ksh6,290 in July to Ksh6,118. The drop was attributed to poor body condition, coupled with low demand.

3.1.2 Goats prices

The graph shows goat long term mean prices against current year 2009

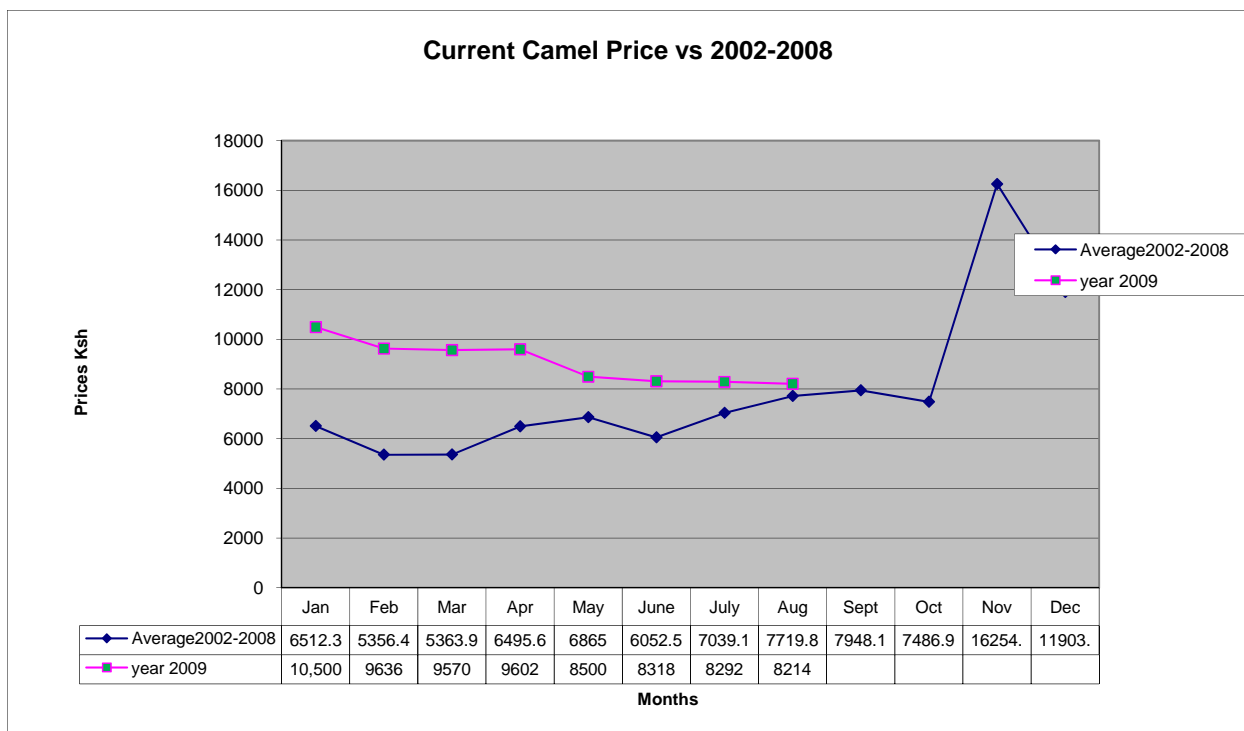


N=420

- Prices of goats reduced compared to the previous month from Ksh1,100 to Ksh1,085 . Despite the price fluctuation goats were still sold at the terminal market as alternative food, school fees and for food.

3.1.3 Camel prices

The graph shows camel long term mean prices against current year 2009.



N=420

- Barren camels were sold in the local markets, especially in the butchereries since others were weak. The average camel price was Ksh8,214 compared to the previous month's Ksh8,292, showing a decline trend.

3.2 Livestock sales

- Livestock demand and the sales rate were low compared to other seasons.
- Poor body condition, prolonged drought and poor pasture/browse condition were determining factors in the poor market.
- Outbreak of diseases coupled with poor purchasing power of the pastoralists communities were emerging issues.

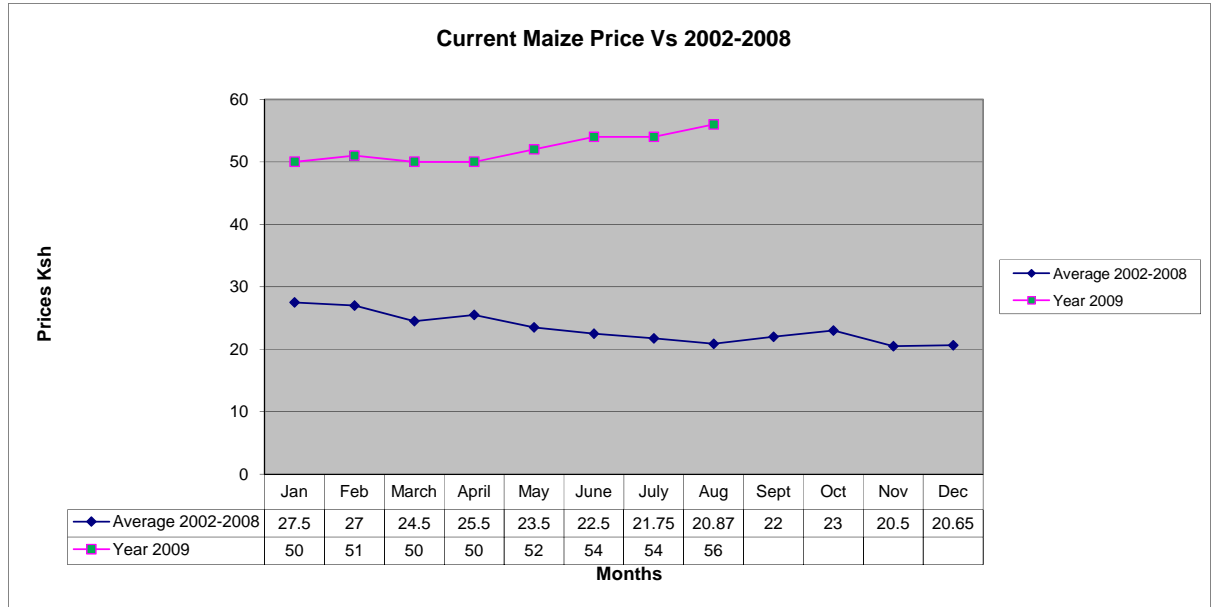
3.3 Milk consumption

- Milk consumption is extremely low as the commodity is scarce with the few available used as alternative source of income to purchase other commercial foods.
- Communities especially in settlements have now opted for powdered milk as alternative milk supply.
- Young children under fives of age are developing deficiency due to lack of milk consumption

3.4 Crop prices

3.4.1 Maize prices

The graph indicates maize long term mean prices against current year 2009.

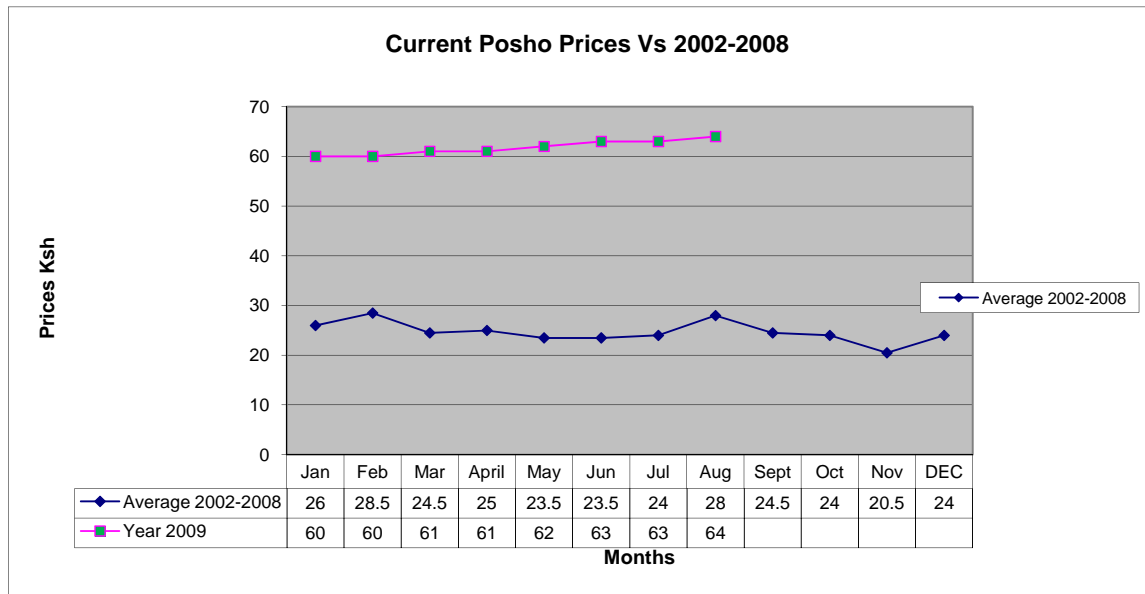


N=420

- Maize prices rose slightly during the month under review to Ksh56 per kilo from Ksh 54 in July. The increase was attributed to low food aid target and high commodity prices due to high transportation costs.

3.4.2 Posho (maize meal) prices

The graph shows long mean price of posho against the current year 2009.

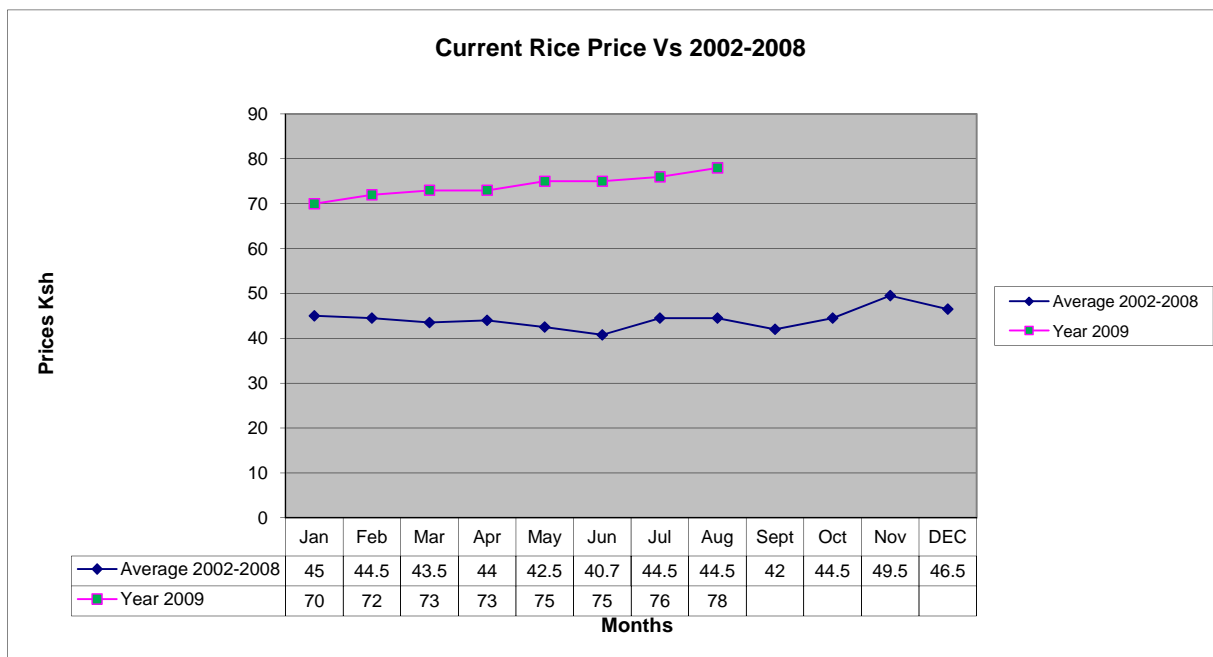


N=420

- Posho prices increased slightly to Ksh64 per kilo compared to Ksh63 per kilo the previous month due to high transportation costs.

3.4.3 Rice prices

The graph shows long term mean prices of rice against the current year 2009



- The prices of rice also increased compared to the previous month from Ksh76 per kilo to Ksh78 due to high transport costs.

3.5 Income

3.5.1 Crop income

- Kitchen farming using small irrigation pumps, especially in Wajir central was an alternative source of income.
- Water melon was grown widely in small irrigation farms. Drought- resistant crops were also grown in small scale farms, especially in the northern part of the district such as Bute.

3.5.2 Livestock income

- The main source of income was sale of livestock but poor price, low demand and poor body conditions all had a negative set back to the pastoralist community.

3.5.3 Other income

- Wages at water sources especially at the shallow wells.
- Selling of miraa, quarrying and daily casual labour.
- Fetching of firewood was also a source of income, especially in Small business/informal livelihood zone.

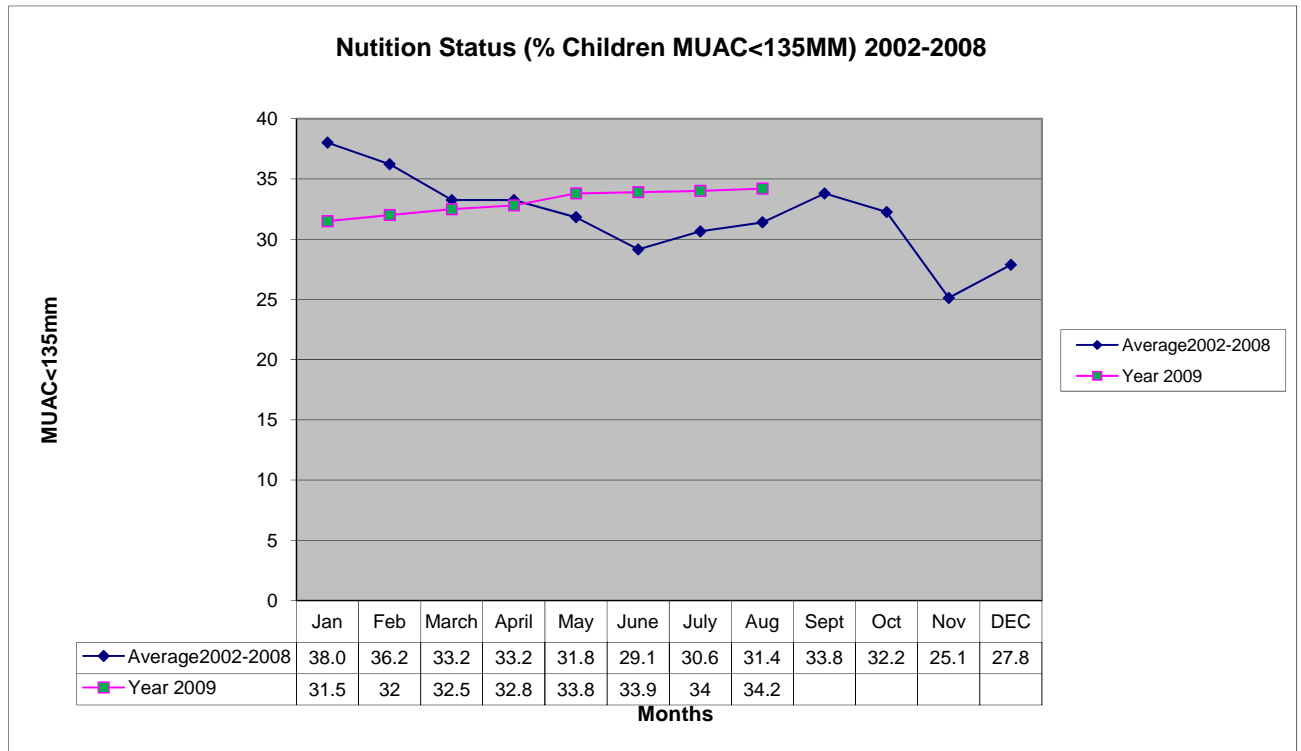
3.6 Implications on food security

- The main source of income was sale of livestock but poor prices, low demand and poor body condition all had a negative set back to the pastoralist community.

4.0 Human welfare indicators (utilisation of food)

4.1 Nutrition status

The graph below indicates long term Muac <135mm against the current year 2009.



N= 420

- The nutrition status of children below 5 years (based on MUAC < 135mm) declined slightly during the month, with the percentage of those rated at risk of malnutrition rising to 34.2% from 34% in July.
- A nutrition survey carried out by the Save the Children UK in June in Wajir South indicated 19.1% global acute malnutrition (GAM) and 4.1% for severe acute malnourished (SAM). In Wajir East the same survey revealed a GAM of 25.3% and SAM of 4.6%. Preliminary nutrition surveys conducted in Wajir west also reported GAM of 25%.
- Malnutrition has increased in all the districts due to lack or inadequate rainfall, hence increased food prices, reduced animal production such milk and poor livestock prices. Facilities including Ogoralle, Ajawa , Buna ,Kutulo and Wajir-bor reported cases of Kwashiorkor.

4.2 Human health

The main causes of morbidity and mortality in the district remained malaria, upper respiratory tract infections, diarrhoeal diseases and malnutrition.

4.3 Flagged areas

Cases of kwashiorkor were reported in Ogoralle, Ajawa , Buna, Kutulo and Wajir-bor. Deaths of livestock were also been reported, especially in Salamaa.

5.0 Current interventions

5.1 Non food interventions

- Support to centres with institutions, including dispensaries and schools, and serious water crisis through water trucking using GOK water bowsers by ALRMP and Ministry of Water.
- Mobile VCT services supported by APHIA II.
- Support to emergency borehole repairs, replacement of submersible pumps and repair of engines and replacement of draw pipes by ALRMP.
- Water and sanitation by Oxfam GB.
- HSNP (Hunger and safety net program).

5.2 Food aid

- EMOP relief food distribution by WFP through lead agency, ALDEF-K and implementing partners (WASDA).
- Basic relief support from OOP especially to vulnerable groups through KRCS.
- FFA-food for asset program by WFP through partner agency.
- Nutrition support in OTP/SFP by SCUK.

5.3 Coping strategies

- Skipping of meals.
- Sale of gum and resins, miraa (khat) and quarry products such as white wash.
- Purchasing of food on credit.
- Wage at water point, sale of animals, fetching of firewood and charcoal burning.
- School-feeding program supported by WFP is on-going.
- Separation of livestock herds into small stock and large stock, slaughtering of calves.

Recommendations to DSG and KFSM

- Provision of emergency water or drilling of contingency boreholes at identified fallback areas during the RAT (Walanri, Ogoralle, Diff, Likole, Matho and shimbirbul). (Action-Water/ALRMP/Regional dev/KRCS).
- Ensure all boreholes are operational at optimum level including repair of the existing ones and ensuring that they are functional.
- Purchase of tools for borehole maintenance team and repair of water bowsers.
- Provision of stand by gen-set, submersible pumps, fast moving spares and fuel subsidy for emergency drought mitigation measures.
- Provision of relief hay and livestock concentrate.
- Allocate emergency funds for mass vaccination of small stocks against PPR and CCPP in the entire district.
- Up scaling of outreach activities (Immunization and treatment of minor illnesses) especially to water trucking Centres.
- Strengthening of peace conflict mechanism especially to areas with high concentration Danaba/Dandu, Gireille/Somalia border, Kutulo and along Wajir – Marsabit border.
- Increase food aid targets to 75% of the population considering the poor purchasing power of the pastoralist.

- Provision of contingency fund for drought mitigation due to the failure of the long rains.(Action :ALRMP/OXFAM).
- Carry out de-stocking programme (livestock off-take) especially cattle and shoats.(Action MoLD/OXFAM, VSF/ALRMP/KRCS).