

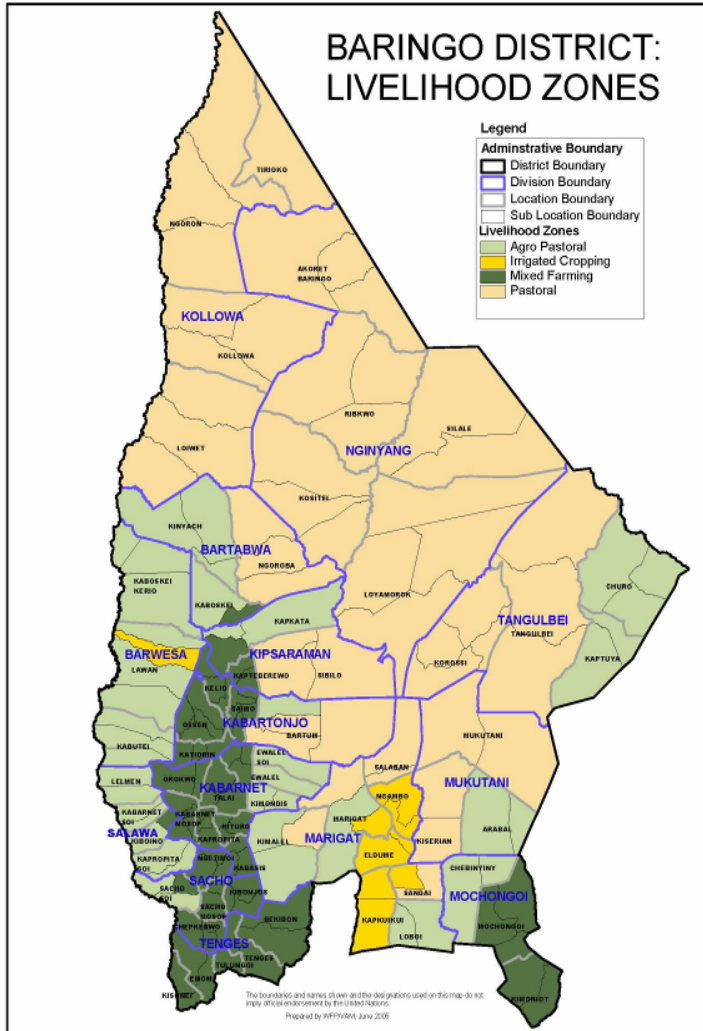


**OFFICE OF THE PRIME MINISTER
MINISTRY OF STATE FOR THE DEVELOPMENT OF NORTHERN KENYA AND OTHER ARID LANDS
ARID LANDS RESOURCE MANAGEMENT PROJECT II**

DROUGHT MONITORING BULLETIN, DECEMBER 2009

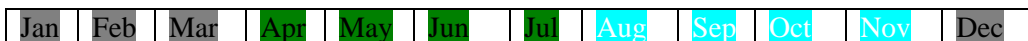
**Baringo Central, Baringo North,
East Pokot and Marigat Districts**

Warning Stages



Livelihood Zone	Warning stage	Trend
Pastoral	Alarm	Improving
Agro pastoral	Alarm	Improving
Irrigated Cropping	Alarm	Improving
Mixed farming	Alarm	Improving
Project area	Alarm	Improving

Seasonal Calendar



- Dry season :- (Land preparation, minimal calving, lambing & kidding)
- Long rains :- (Planting, most kidding & lambing and minimal calving & honey harvesting)
- Short rains :- (Most calving & honey harvesting and minimal kidding & lambing, pre-harvest & harvesting)

Situation overview

- The districts received favorable amount of rainfall during the month while temporal distribution was good. The rainfall had a significant impact on the grazing and water resources. A total of 328.4 mm average was received from four stations, an average of 5 days.
- The quality and quantity of forage improved in all the livelihood zones.
- Water availability for both human and livestock was sufficient in all the livelihood zones.
- Body condition of livestock was poor despite improved forage and deaths were still reported due to the effects of drought in the pastoral, irrigated cropping and agro-pastoral livelihood zones.
- Milk production was low and only in camels. This was attributed to poor body condition of the animals.
- The average prices of livestock decreased in cattle and goats while it insignificantly increased in sheep. The increase in price of sheep was attributed to availability of buyers and less number of animals in the markets during the month. Also prices in poultry increased than in last month due to high demand.
- The average prices of food crops and other commodities decreased during the month owing to availability of supplies in the markets within the district and the neighboring districts however distribution of relief food has delayed for three months now.
- Sale of fish, casual labour, petty trade (local beer brewing e.t.c.) and sale of charcoal & sale of wood products was the other alternative sources of income for most sampled households during the month after the sale of livestock.
- The nutrition status of children below five years declined during the month, with the percentage of those rated at risk of malnutrition rising to 27.4 % from 21.9 % the previous month. This was attributed to delay in distribution of relief food and lack of supplementary food for children at the household level. This, however, is likely to worsen as milk production from the animals declined due to inadequate forage.
- Cholera outbreak that occurred in the area of Kapnyunguny the border of East Pokot and Turkana East districts was contained but sporadic cases were reported in the month.

Recommendations to DSG and KFSSG

- The veterinary department / Agencies should step up support to the livestock health sub -sector through vaccinations and treatment of clinical cases. In particular, more efforts should be directed to investigate cases of LSD outbreak in cattle, premature births in goats and Mange outbreak in goats in the areas mentioned.
- The GOK and other aid agencies to put more effort to ensure that communities in East Pokot, North Baringo, Marigat and Baringo central districts are given continuous relief food supplies (GFD) and supplementary food for children and the elderly until the stress situation normalises as malnutrition cases are rising, prices of food commodities are rising, animals are dying due to drought effects hence people cannot cope with the stresses, also milk production from animals declined drastically due to the drought effects that persisted for a long period.
- There is need to strengthen conflict prevention and peace building initiatives to maintain the already achieved level of peace and further reduce it to the lowest level along the borders of East Pokot, Baringo, Marakwet, Turkana, Laikipia west and Samburu districts to enhance peaceful co-existence.

- The Moh/ Mphs/ Stakeholders should put more efforts to monitor the sporadic cholera outbreak cases in East Pokot district and make efforts to supply more Anti-malarial drugs in all the rural health facilities that are far from the district hospitals to cope with Malaria upsurge at the moment and investigate cases of Enteric fever upsurge in the areas mentioned of the project area.
- The district Game Warden to put more efforts to ensure that Wolves, Lynx and stray dogs predated on the livestock in the mentioned areas of the project area are contained to save the pastoralists who are losing their animals daily. This has been an alarming scenario for some months now.
- The district public works engineer should put more efforts to ensure that the roads washed away by the recent torrential rains are rehabilitated to permit food and other logistics reach communities.

Current interventions

Non-food interventions

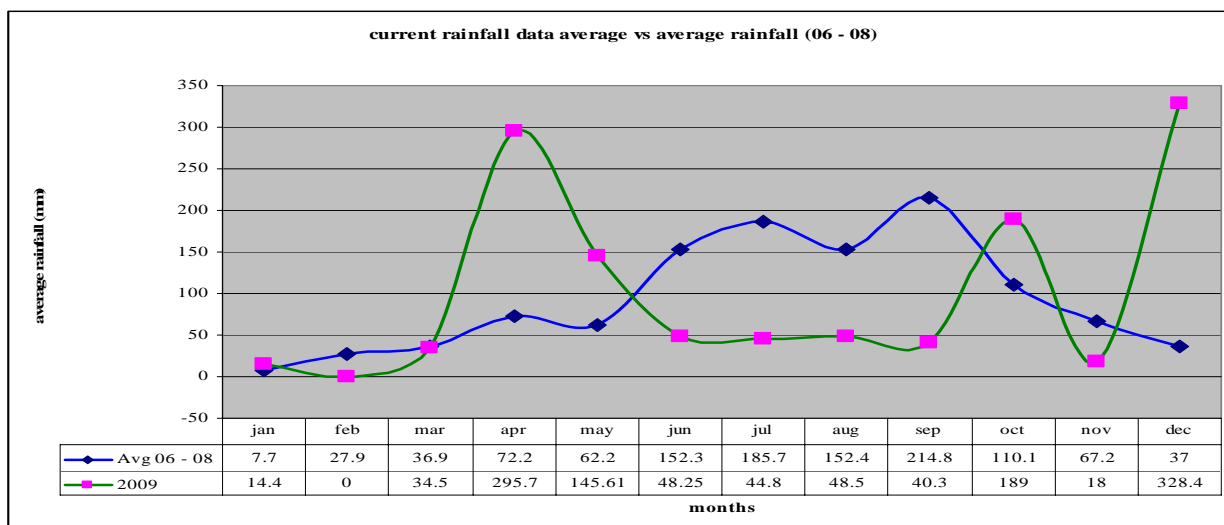
- Rehabilitation of Kapau (Nginyang division), Sintaan (Marigat division) and Chemorongion (Mochongoi division) boreholes – ALRMP.
- Excavation of water pans in anticipation of El-nino rains in the project area: Katikit (Nginyang division), Riongo (Mondi division), Sumutwo (Bartabwa division) and Ramacha (Mukutani division) – ALRMP.
- Peace building initiatives within the districts' of the project area by various stakeholders i.e. the PSC, DPC, DSC, World vision, Community Elders, Youth groups, Political leaders, Pastors and ALRMP.

Food aid

- The EMOP relief food distribution phase 2 commenced in late May 2009 targeting the following number of population in the districts: - East Pokot – 47,423 (GFD), Baringo central – 3,476 (FFA), Marigat – 13,975 (FFA) and Baringo North – 23,288 (FFA) persons.
- However, the number that benefits from the relief food currently is so less as compared to the number that is supposed to benefit according to the provisional district population census recently done. Also the relief food distribution has delayed for the last two months in Baringo: Central, North and Marigat districts and for three months in East Pokot district.

1.0 Environmental indicators (Stability)

1.1 Rainfall



Source: ALRMP rain gauge data stations

- The district recorded 328.5 mm average rainfall was received from five stations, five days average during the month compared to the previous month where there was 18 mm from one station for an average of four days. This was not normal at the time of the year as shown on the graph where the current average is above the long term mean by 787.8 %.

1.2 Condition of natural vegetation and pasture

The quantity of forage in all the livelihood zones improved during the month due to the rain received, quality of the available pasture is fair.

The average distance to grazing areas reduced to 10.0 km. from 10.5 km in the previous month.

1.3 Water sources and availability

During the last four weeks there was an increase in water availability following good temporal distribution of showers in the project area. The water sources in use were pans and dams, natural rivers, traditional river wells, shallow wells, boreholes, springs and lakes. Distance to the nearest water source during the month reduced to an average of 4.9 km from 5.4 km in the previous month for most of the households.

1.4 Emerging issues

- The favourable showers received during the month made improvement on the browse and pasture condition and the distances to water sources and pastures also reduced. 60 % of the Satellite herds are still held up at the dry season grazing points (Marakwet, Turkana East, Pokot central, Samburu and Laikipia west districts).
- Weak goats, cattle and sheep continue to die following onset of the torrential rains during the month in pastoral, Agro-pastoral and irrigated cropping livelihood zones.
- Lynx, wolf and stray dogs predating on goats & sheep in Kaptuya (Churo division) and Sirata community (Mukutani division) respectively.

1.5 Implications on food security

Dying livestock as a result of wild animals and torrential rain had a negative impact to household food security for the pastoralists.

2.0 Rural economy indicators (Food availability)

2.1 Livestock production

2.1.1 Livestock body condition

- Livestock body condition was fair for both small stock and cattle respectively in mixed farming while are poor in pastoral, Agro-pastoral and irrigated cropping livelihood zones. Goats, cattle and sheep continue dying in the latter zones due to the effects of the ended drought and onset of the torrential rains in the project area.
- This was not normal at the time of the year owing to extended period of the drought and the abrupt rains.

2.1.2 Livestock diseases

LSD outbreak in Kinyach (Bartabwa division) prompting closure of cattle market.

Premature births in goats in Kamrio community (Nginyang division). Mange outbreak in Yatya community (Kipsaraman division).

2.1.3 Milk production

Milk production declined in the project area owing to poor body of animals. This is not normal at this time of the year as the drought effects extended more.

2.2 Crop production

2.2.1 Timeliness and status of crop production activities

Agro-pastoralists reported crop failure due to lack of rain earlier in the year. This is not normal at this time of the year as this is supposed to be the post harvesting season.

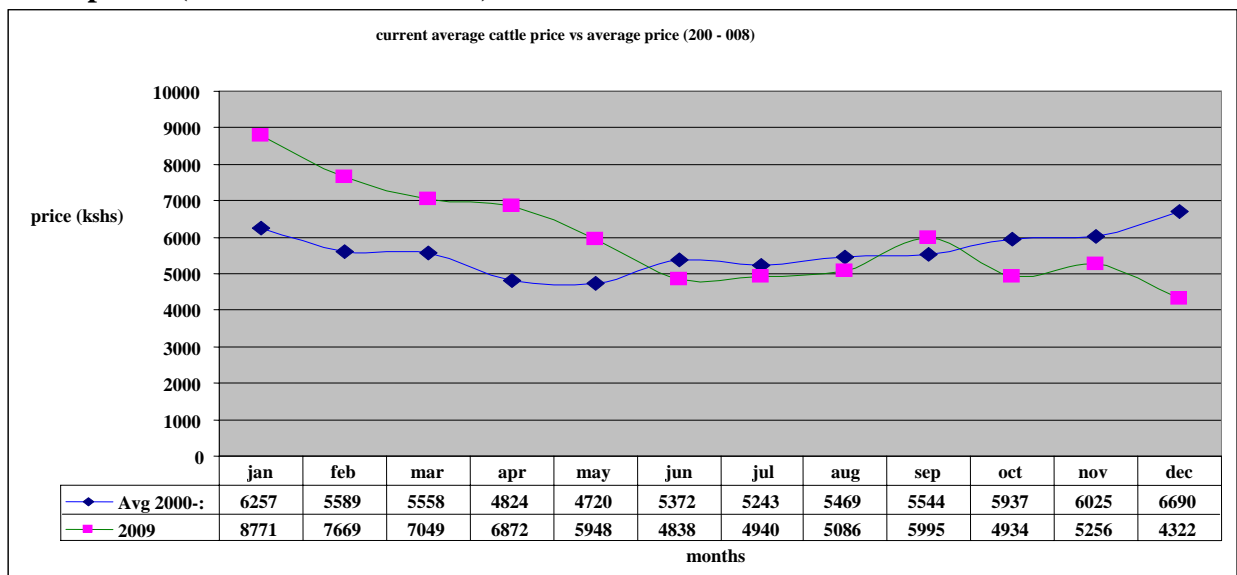
2.3 Implications on food security

Milk production at household level declined yet this is the food depended upon by the Pastoralists and children. Goats, Cattle and Sheep are dying due to drought stress and the abrupt rains. This is a major threat to food security at the household level. Relief foods need to be given to the population continuously until the situation normalises. Market prices of cereals and legumes remain high in the project area and availability in the markets remains scarce.

3.0 Access to food

3.1 Livestock marketing

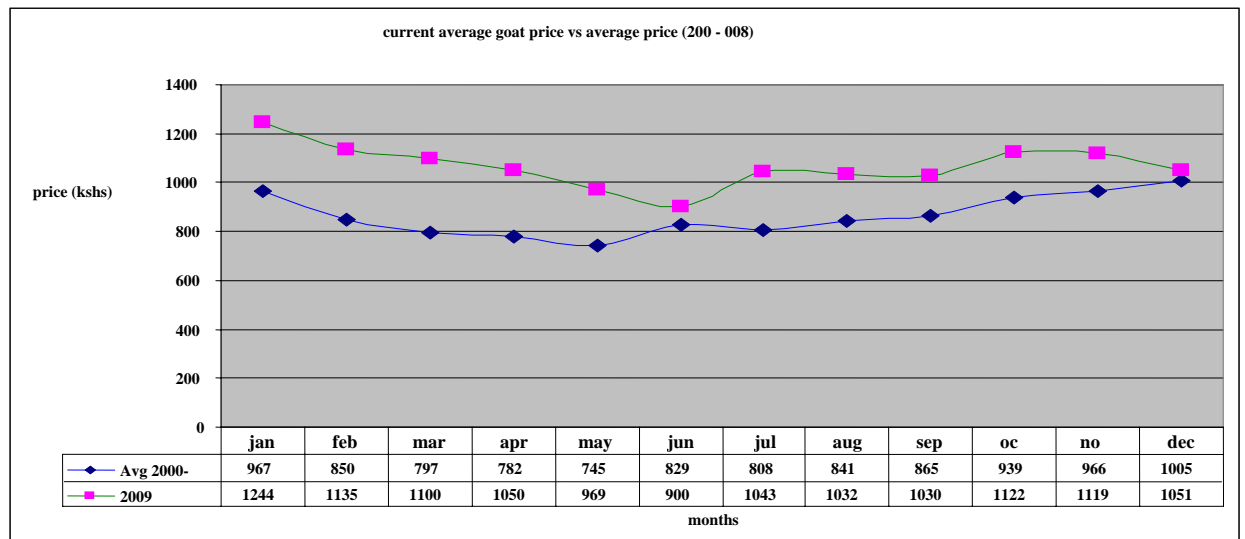
3.1.1 Cattle prices (From household level)



N = 480 HH

- The average price showed a decrease in the price of cattle from Ksh5,256 in the previous month to Ksh4,322 in December. The decrease is not normal at this time of the year when the price of cattle is expected to go up at this time of the season. The price was, however, lower than the long term mean by 35.4 % as shown on the graph.
- The low price was attributed to the poor body condition of the livestock owing to insufficient pasture during this period. This was not good for household food security. Bartabwa division had the highest average cattle price of Ksh8,250.
- This was attributed to fair body condition due to accessing favorable pasture along the kerio river basin. Tangulbei division had the lowest average price of Ksh2,707 due to poor body condition.

3.1.2 Goats prices (From household level)



N = 480 HH

- The average goat price decreased from Ksh1,119 in November to Ksh1,051 in December, showing a depreciation.
- The price was, however, slightly above the long term mean by 4.6 %. The decrease was attributed to influx of goats in the markets causing sales to go down.
- This was a negative impact to household food security. Bartabwa division had the highest goat price average of Ksh1,856 due to accessing external buyers while Kipsaraman division had the lowest price average of Ksh446 owing to poor body condition and lack of external buyers.

3.1.3 Sheep prices (From household level)



N = 480 HH

- The average sheep price increased from Ksh 891 in November to Ksh 925 in December, showing appreciation. The price increase was attributed to high demand. The price was however higher than the long term mean by 7.1 %. This was a positive impact to household food security.
- Bartabwa division had the highest sheep price of Ksh1,600 owing to high demand while Kipsaraman division had the lowest price of Ksh311 as a result of poor body condition of the animals coupled with low demand.

3.2 Livestock sales

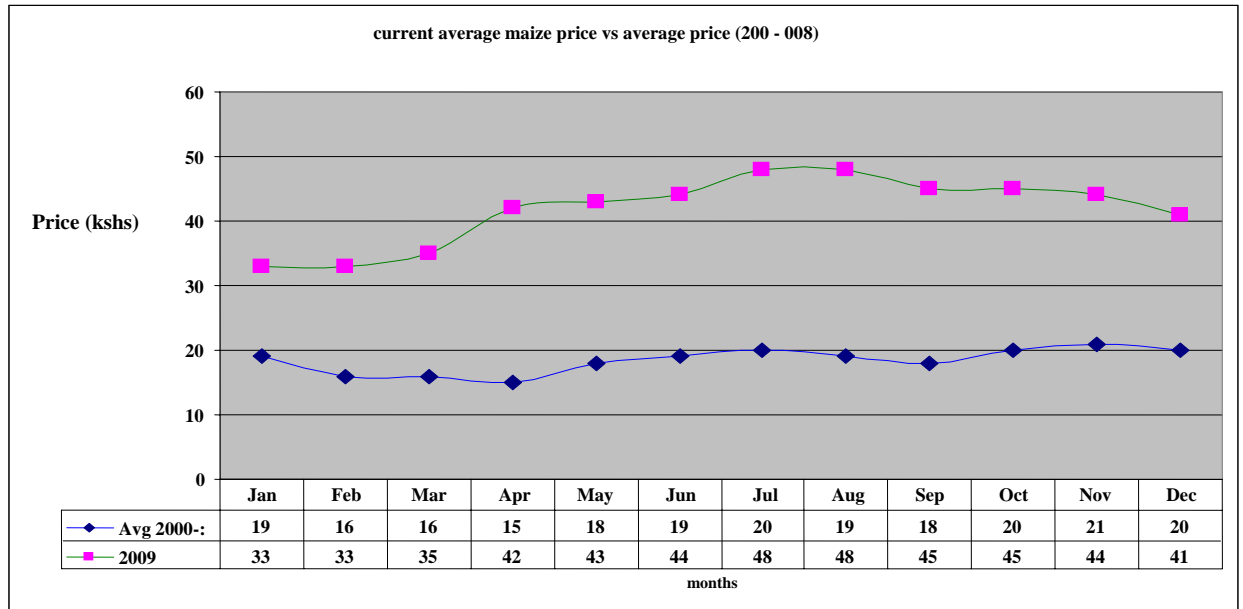
- The volume of livestock sales increased in the month compared to the previous months as a result of demand for food in the markets during the month. Goats, sheep, poultry and cattle were the main livestock offered for sale at the markets.
- Pastoral, Agro-pastoral and irrigated cropping livelihood zones had the highest sales as they depend on their livestock sales as the sole means of getting household needs while mixed farming livelihood zone had the lowest sales owing to having other sources of income e.g. business, food stock, employment and casual labor e.t.c. to depend on.
- The level of sales is not normal at this time of the year owing to high demand for food during the ended drought period.

3.3 Milk consumption

Milk consumption by household members declined drastically in all the livelihood zones. Compared with the previous month the milk consumption at household level decreased owing to the effects of the extended drought period. This had a negative impact on food security at household level, especially for the under five year's children.

3.4 Crop prices (market prices)

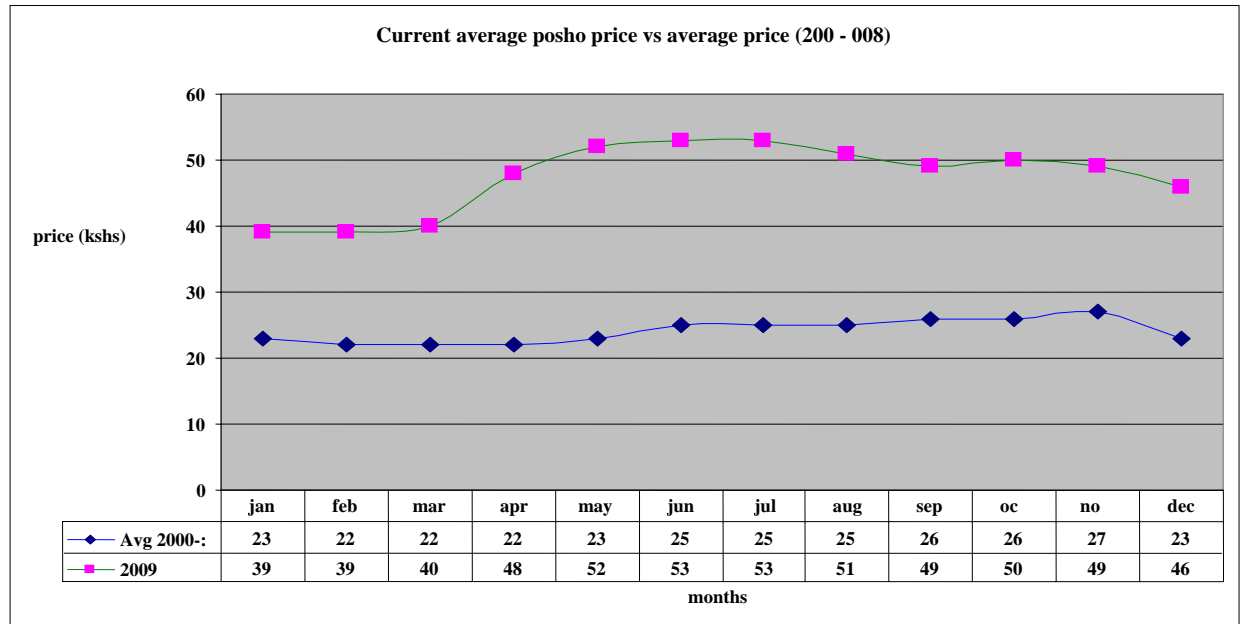
3.4.1 Maize prices



N = 480 HH

- The average maize price during the month was Ksh41 per kilo, Ksh3 less than that of the previous month (highest price in the market was Ksh70 per kg).
- The average price was more than the long term mean by 105 % owing to scarcity of the food at the markets however the demand has picked up in the markets because of famine stress that has affected more of the population in the project area.
- Inadequate supply of maize to the local markets from agro- pastoralists within the project area and also neighboring districts is the cause of high prices.
- As in the previous month, maize prices were much higher in the pastoral, Agro-pastoral and irrigated cropping livelihood zones than in the mixed farming livelihood zone. The average maize price was not normal at this time of the year owing to the scarcity of the food in the project area.

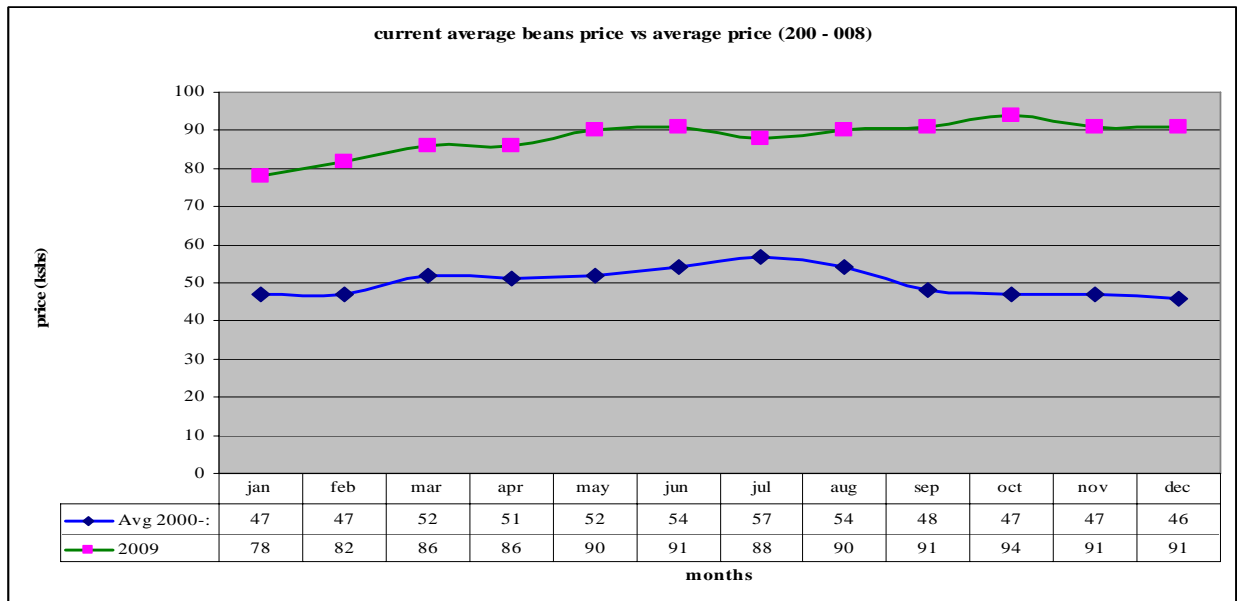
3.4.2 Posho (maize meal) prices



N = 480 HH

- The average price of Posho during the month was Ksh46 per kilo, Ksh3 less than that of the previous month (highest price in the market is Ksh80 per kg). The average price decreased due to constant demand of maize in the local markets.
- The price was more than the long term mean by 100 %, this is eroding the purchasing power of the pastoralists as they have to sell a lot of animals to meet the food demand.
- Posho prices were much higher in the pastoral, Agro-pastoral and Irrigated cropping livelihood zones than in the mixed farming zone because the three zones depend currently on purchasing the commodity from their local markets which normally is dictated by it's availability unlike the mixed farming who are producers and access it easily.
- The price of Posho is not normal at this time of the year owing to erratic availability of maize in the markets.

3.4.3 Beans prices

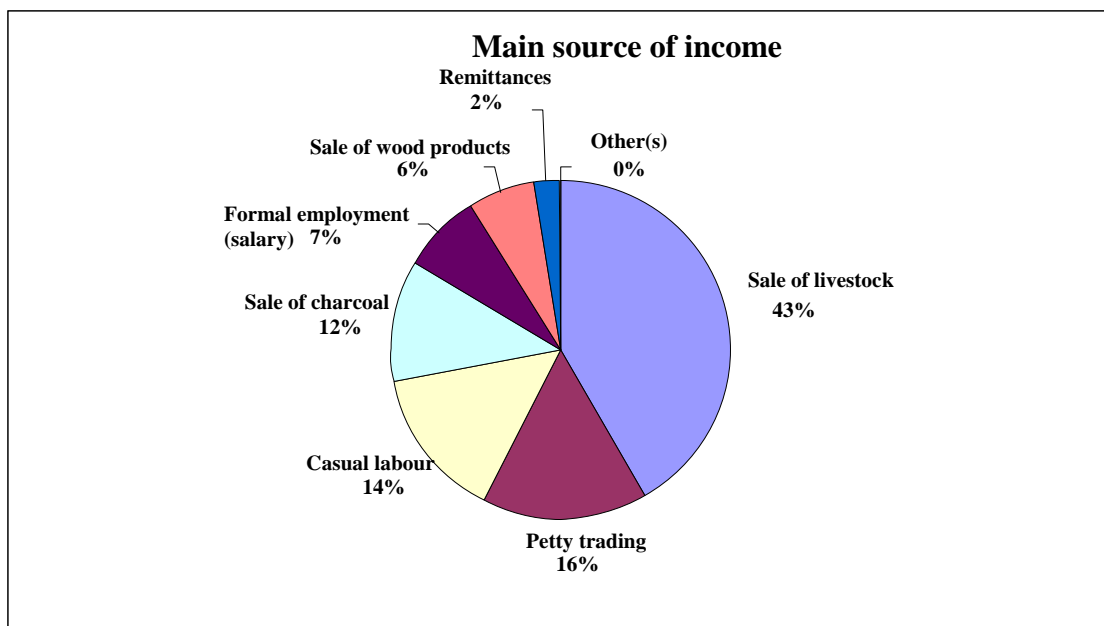


N = 480 HH

- The average price of beans during the month was Ksh91 per kilo, same as that of the previous month, highest price in the market was Ksh120 per kg.
- The price was more than the long term mean by 97.8 %. The average price did not change due to stable availability of the food commodity in the markets within the project area and also from the neighboring districts. However, the prices were too high at the moment to cope with the purchasing power of the pastoralists. This is really a threat to household food security.
- Beans prices were higher in the pastoral livelihood zone than in the irrigated cropping and Agro- pastoral zones. Beans prices are not normal at this time of the year owing to its erratic availability in the markets.

3.5 Income

3.5.1 Main source of income

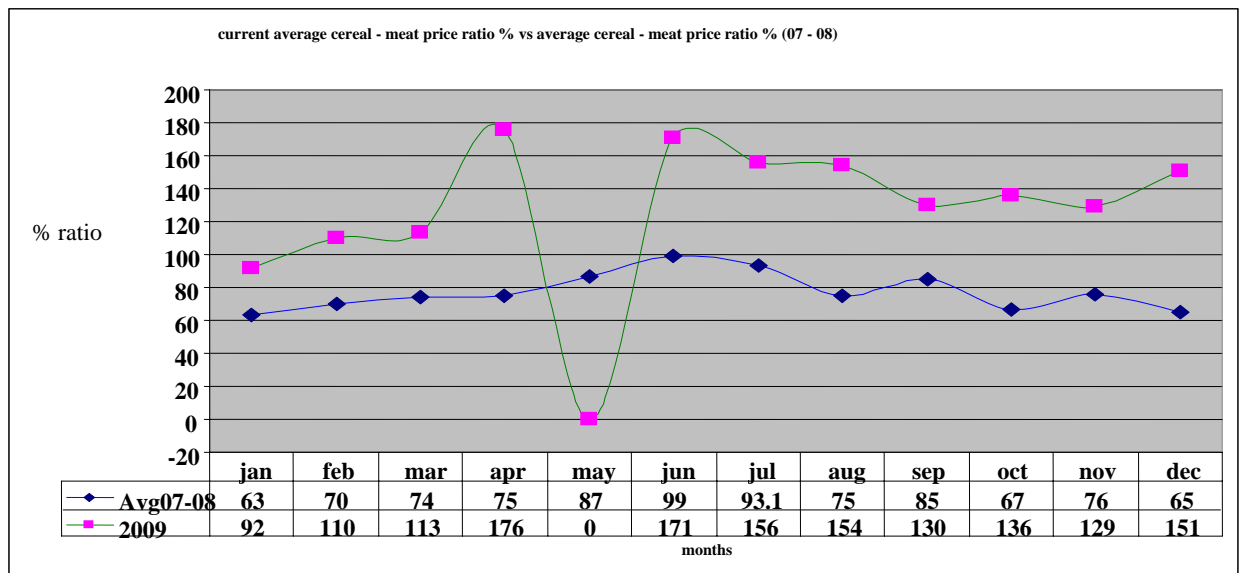


- Livestock sales income improved compared to the previous months due to fair availability of external buyers during the month who normally purchase large number of animals and offer better prices.
- The income obtained from the livestock is not normal at this time of the year because of the less number of animals sold at the markets owing to the effects of the ended drought stress. The average daily wage rate per casual for the month was ksh. 90, ksh. 4.00 less that of the previous month, something so meager to meet the daily household's needs.
- Most of the trade in charcoal, wood products and petty trading was recorded in Pastoral, irrigated cropping and Agro-pastoral livelihood zones. This reflects unavailability of livestock and farm incomes for the households in these zones.

3.5.2 Other income

- Sale of fish was another major source of income during the month, with approximately a fraction of the household's members engaged as fish traders'. Agro-pastoralists reported crop failure in the project area due to lack of rainfall earlier in the year.

3.6 Terms of trade



N = 480 HH

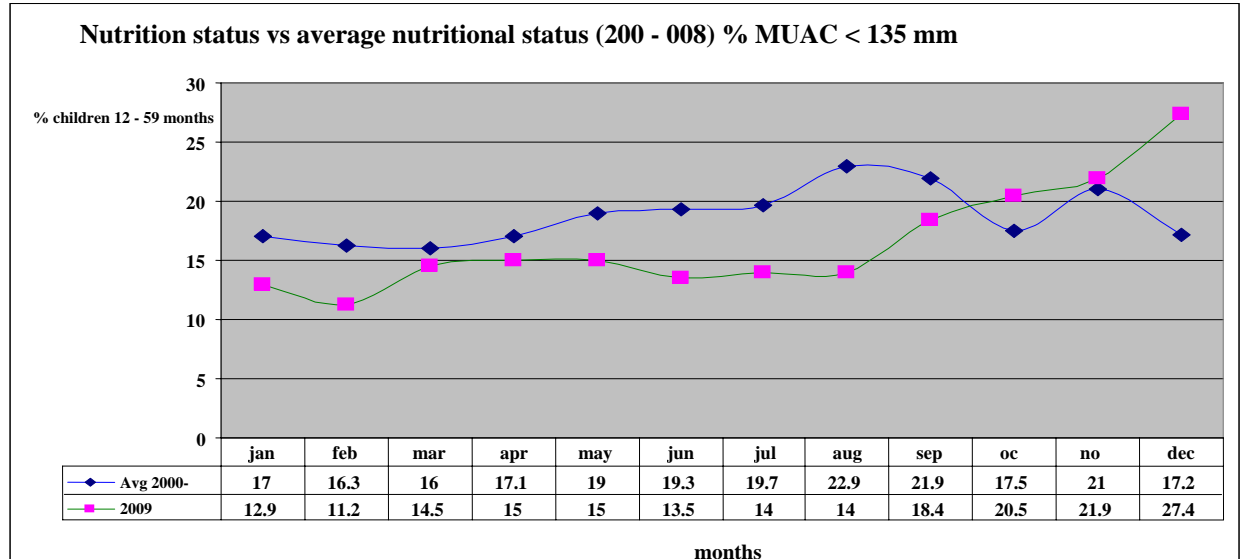
- Terms of trade worsened by 17.1 % during the month from that of the previous month however it was above the long term mean by 132.3 %. The price ratio worsened in pastoral, Agro-pastoral and irrigated cropping livelihood zones because of low prices offered for the livestock sales by the traders as compared to high prices to purchase cereals while it was lower in mixed farming livelihood zone owing to fair accessibility of cereals and better livestock prices in this area.
- The cereal: meat price ratio was not normal at the time of the year. For a pastoralist to purchase 90 kg sack of Posho which goes at an average price of Ksh4,500 market price, he/ she had to sell 5 (five) goats, that goes for an average of Ksh1000 at the moment to meet the price and the sack cannot last for even a month. This completely eroded the purchasing power of the people hence depleting the asset level of the pastoralists each time animals are sold.

3.7 Implications on food security

The low prices of livestock offered coupled with the erosion of the peoples' purchasing power in the project area has depleted the asset level of the pastoralists through high number of animals sold to purchase foods hence a threat to the household food security.

4.0 Human welfare indicators (Utilisation of food)

4.1 Nutrition status



N = 2,066 children

- The nutrition status of children below five years declined during the month, with the percentage of those rated at risk of malnutrition rising to 27.4 % from 21.9 % the previous month.
- This was attributed to delay in distribution of relief food and lack of supplementary food for children at the household level. The level of malnutrition was highest in pastoral, irrigated cropping and Agro-pastoral livelihood zones and was lower in mixed farming livelihood zone. The rate was also higher than the long term mean.

4.2 Human health

- Cholera outbreak that occurred in the area of Kapnyunguny, the border of East Pokot and Turkana East districts, where East Pokot pastoralists were grazing their cattle was contained however sporadic cases are reported.
- Enteric fever upsurge reported in Lower Kipsaraman, Nginyang, Kolloa, Tangelbei, Mukutani and Churo divisions as a result of consuming dirty pools of water.
- Malaria upsurge was reported in Marigat, Nginyang and Kolloa divisions.
- Worsening nutritional status for the elderly and are at risk of perishing due to lack of supplementary food at the household level in the project area.

4.3 Flagged areas

- Pastoral, Agro-pastoral and irrigated cropping livelihood zones reported the highest malnutrition rates. These areas require particular attention.

4.4 Coping strategies

- The coping mechanisms employed by the vulnerable population in all the livelihood zones during the month were, migration of livestock in search of pasture and water, borrowing food from relatives, Reduction in size of meals & skipping some, eating wild foods and performing casual labour & petty trade. This was employed by majority of the sampled households while a few of the households sold their livestock.
- Compared to previous months, the situation is worsening and requires more percentage population coverage of Emergency Operation relief food distribution.

5.0 Current intervention measures

5.1 Non-food interventions

The following programmes are ongoing and are meant to mitigate the disease, drought and famine stress in the project area.

- Rehabilitation of Kapau (Nginyang division), Sintaan (Marigat division) and Chemorongion (Mochongoi division) bore-holes – ALRMP.
- Excavation of water pans in anticipation of El-nino rains in the project area: Katikit (Nginyang division), Riongo (Mondi division), Sumutwo (Bartabwa division) and Ramacha (Mukutani division) – ALRMP.
- Peace building initiatives within the districts' of the project area by various stakeholders i.e. the PSC, DPC, DSC, World Vision, Community Elders, Youth groups, Political leaders, Pastors and ALRMP.

5.2 Food aid

- The EMOP relief food distribution phase 2 commenced in late May 2009 targeting the following number of population in the districts: - East Pokot – 47,423 (GFD), Baringo Central – 3,476 (FFA), Marigat – 13,975 (FFA) and Baringo North – 23,288 (FFA) persons. However, the number that benefits from the relief food currently is so less as compared to the number that is supposed to benefit according to the provisional district population census recently done. Also the relief food distribution has delayed for the last two months in Baringo: Central, North and Marigat districts and for three months in East Pokot district.

6.0 Recommendations to DSG and KFSM

- The veterinary department / Agencies should step up support to the livestock health sub -sector through vaccinations and treatment of clinical cases. In particular, more efforts should be directed to investigate cases of LSD outbreak in cattle, premature births in goats and Mange outbreak in goats in the areas mentioned.
- The GOK and other aid agencies to put more effort to ensure that communities in East Pokot, North Baringo, Marigat and Baringo central districts are given continuous relief food supplies (GFD) and supplementary food for children and the elderly until the stress situation normalises as malnutrition cases are rising, prices of food commodities are rising, animals are dying due to drought effects hence people cannot cope with the stresses, also milk production from animals declined drastically due to the drought effects that persisted for a long period.
- There is need to strengthen conflict prevention and peace building initiatives to maintain the already achieved level of peace and further reduce it to the lowest level along the borders of East Pokot, Baringo, Marakwet, Turkana, Laikipia west and Samburu districts to enhance peaceful co-existence.

- The Moh/ Mphs/ Stakeholders should put more efforts to monitor the sporadic cholera outbreak cases in East Pokot district and make efforts to supply more Anti-malarial drugs in all the rural health facilities that are far from the district hospitals to cope with Malaria upsurge at the moment and investigate cases of Enteric fever upsurge in the areas mentioned of the project area.
- The district Game Warden to put more efforts to ensure that Wolves, Lynx and stray dogs preying on the livestock in the mentioned areas of the project area are contained to save the pastoralists who are losing their animals daily. This has been an alarming scenario for some months now.
- The district public works engineer should put more efforts to ensure that the roads washed away by the recent torrential rains are rehabilitated to permit food and other logistics reach communities.