

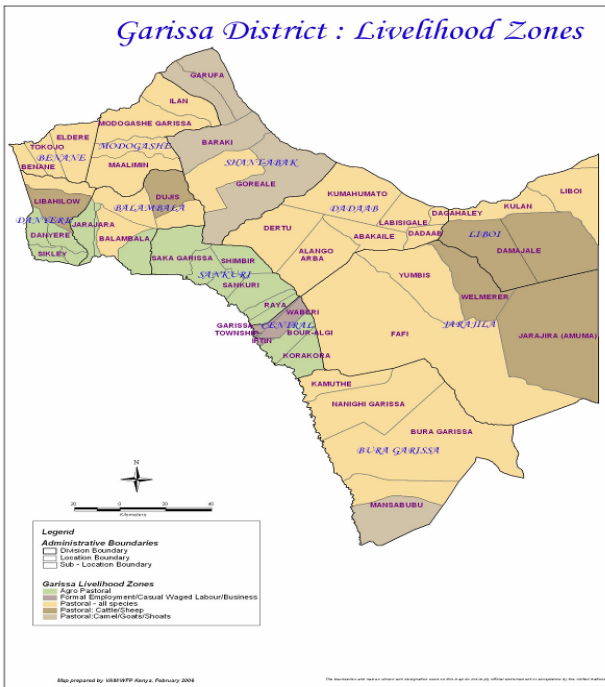


**OFFICE OF THE PRIME MINISTER
MINISTRY OF STATE FOR THE DEVELOPMENT OF NORTHERN KENYA AND OTHER ARID LANDS
ARID LANDS RESOURCE MANAGEMENT PROJECT II**

DROUGHT MONITORING BULLETIN, DECEMBER 2009

Garissa District

Warning Stages



Livelihood Zone	Warning stage	Trend
Agro-pastoral	Alert	Improving
Pastoral-Cattle/Sheep	Alert	Improving
Pastoral- all species	Alert	Improving
Pastoral: Camels and Goats	Alert	Improving
District	Alert	Improving

Seasonal Calendar



Dry period (Jilal) consisting of January, February, & March. Temperatures are high; activities carried out include,

- migration of livestock for pasture & water search,
- Herd separation
- Livestock marketing
- Pressure on boreholes
- Conflicts

Long rainy season (Guu), starts late March and continues in, April and May. Activities carried are-

- Selection & breeding of livestock
- weeding ceremonies
- weaving
- male circumcision
- restocking of livestock
- planting for rain fed crops
- deworming of livestock
- Forage survey

Dry and cold period (Hagaa) in the months of June, July, August, Sept. and mid October. The activities performed are:

- High rate of livestock and household migration
- High labour demand
- Destocking /culling
- Surveillance for pasture /browse
- Caravan water

Short rainy season (deer) of Oct, Nov and Restock December. Activities for this period are: ing of livestock.

- Breed improvement
- Planting for rain fed crops
- Crafts and weaving
- Calving and kidding period

- The district received rainfall during the month and the distribution was fair. The northwest divisions of Banane, Danyere and Mbalambala received very little rains while the rest of the divisions realised substantial amounts.
- The quality and quantity of pasture and browse continued to improve with high regeneration /regrowth of forage realized, thus improving the uptake for livestock and consequently reducing the trekking distances and enhancing faster livestock growth and reproduction.
- The main water sources were boreholes, River Tana, Benane springs, natural water holes and water pans. Water was available for livestock, with most water pans collecting substantial amounts of water, thus reducing congestion at water points.
- Water accessibility for households improved when compared to the preceding month. The distances covered by pastoralists reduced, with an estimated average distances of less than 8 km covered.
- Livestock access to water continued to increase compared with the preceding month. The distances covered were within the livestock grazing points, hence less than a kilometre.
- No cases of conflict/human displacement / insecurity were reported in the course of the month under review and there was no livestock migration.
- The body condition of livestock continued to improve with the availability of water and pasture/browse, impacting on production and sales of livestock.
- There were suspected and reported cases of diseases like lumpy skin diseases, contagious caprine pleura pneumonia and foot and mouth. The diseases need to be confirmed and attended to so that the risk posed by the diseases is contained in order to have continuous increase in production.
- Milk production in the district increased compared with the preceding month. The increase was related to improved livestock body condition, coupled with increased birth rate for different livestock species.
- Cattle prices continued to increase compared with preceding month. The increase was attributed to the continued improvement of pasture and water availability and accessibility, which in turn improved the body condition. Cattle traded at Ksh9500 compared to Ksh7708 in November.
- The prices of goats show an increasing trend when compared with the preceding month. It was Ksh1200 in November and Ksh1284 in December. Sheep prices continued to show an increase in trend when compared with the preceding month. The increase was attributed to the improvement in pasture and water availability. Sheep traded at Ksh900 in November and Ksh1063 in December.
- The nutrition status of children below five years continued to improve when compared with the preceding month, with the percentage of those rated at risk of malnutrition falling to 10.8 from 12.3% in November.

Current interventions

Non-food interventions

- Repair, servicing and procurement of livestock boreholes equipment continued in preparation for the next dry spell.
- Provision of seeds for planting under hot community project.
- Disease surveillance, vaccination and livestock treatment throughout the month.

- Community capacity building by Arid lands Resource Management Project.
- Support of microfinance for communities continued during the month.
- Njaa marufuku Kenya project and national agriculture and livestock extension programme by Ministry of Agriculture continued to be implemented in the district.
- Mobile outreach services were carried out by the Ministry of Health.

Food aid

- EMOP relief food distribution covering a population of 150,000 beneficiaries.
- School feeding programme provided by WFP targeting 42,069 children continued during the month.
- Supplementary feeding targeting 10,200 children under five, pregnant and lactating mother continued.

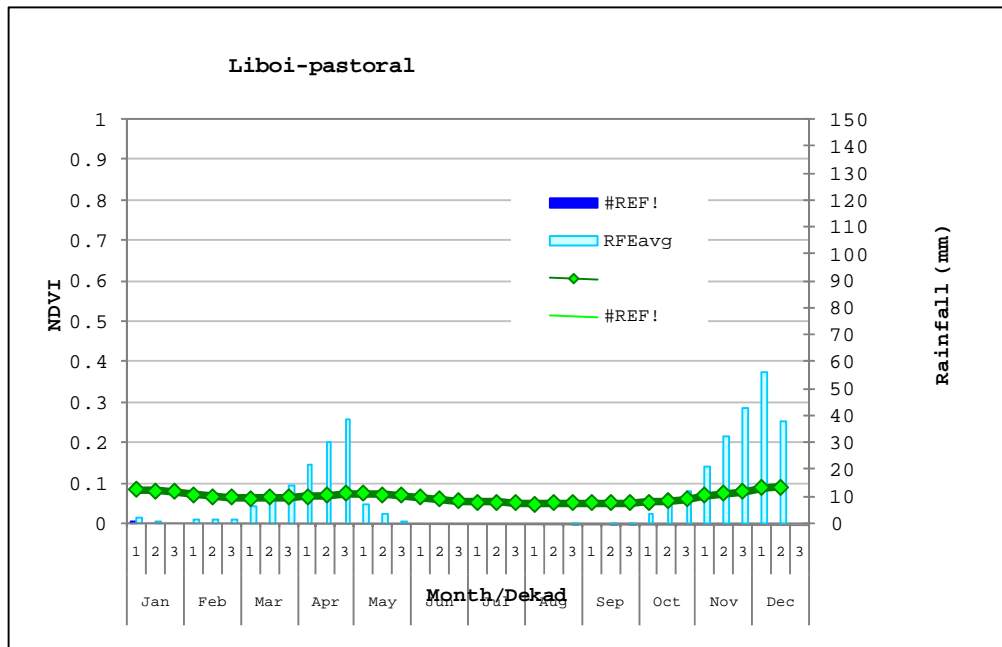
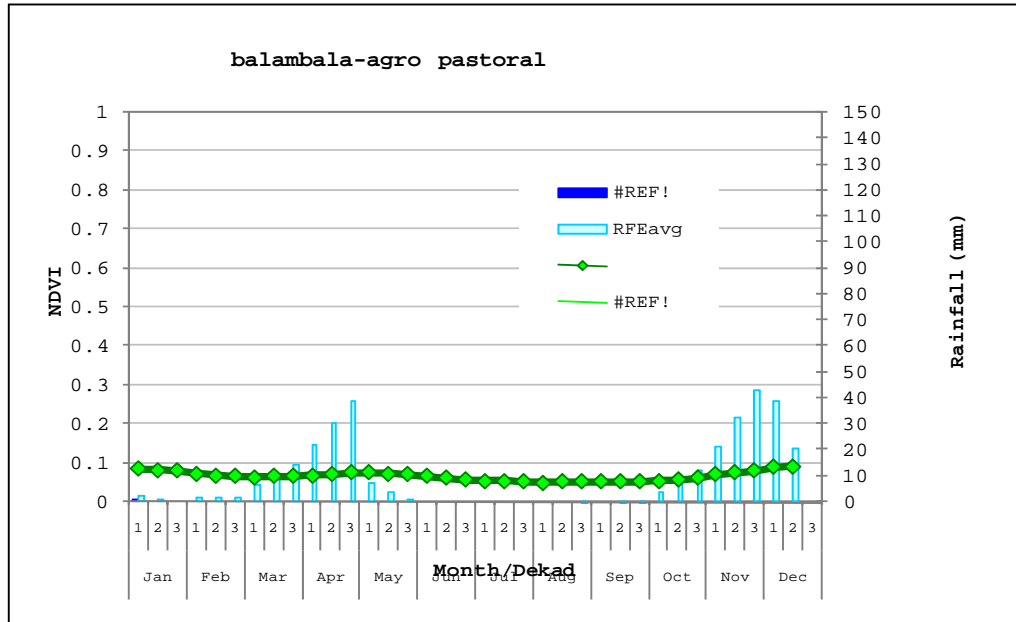
Recommendations to DSG and KFSM

- Stabilise food aid until full recovery from the drought is achieved.
- Continue to support boreholes on repair, servicing and maintenance to enhance water supply during the dry spell.
- Support the rapid response teams to attend to any emergencies.
- Provide breeding stocks to livestock keepers to improve quality of breeds.
- Train communities on crop and livestock husbandry practices.
- Support communities on financing micro-enterprise development to enhance their livelihoods.
- Initiate restocking programme for those who lost their livestock.
- Continue to capacity build pastoral communities on peace building and conflict resolution.
- Support small-scale farms along River Tana with farm inputs, construction of watering canals and value addition activities.
- Set up contingency fund across the departments in a coordinated structure.
- Support the veterinary investigation laboratories on disease surveillance before any outbreaks are reported.
- Mobilise and sensitise communities on diversification of livelihoods.
- Continue to provide mobile outreach services for centre with no health facilities.
- Initiate a forestation programme to improve the denuded land.
- Strengthen stakeholder's co-ordination and participation in development activities.

1.0 Environmental indicators (stability)

1.1 Rainfall

- The district received rainfall during the month and distribution was fair. The northwest divisions of Banane, Danyere and Mbalambala received very little rains while the rest of the divisions realised substantial amount of rainfall, making them stand better in terms of water resources.
- The recorded rainfall was well distributed in the district and in average the rains were fair. The rainfall distribution was summarized by the two sample divisions shown in the graph.



Normalized difference vegetation index and rainfall estimated representation for pastoral and agro-pastoral livelihood zones

Temperatures continued to increase when compared to the previous month but were within the normal range.

1.2 Condition of natural vegetation and pasture

- The quality and quantity of pasture and browse continued to improve with high regeneration /regrowth of forage realized, thus improving the uptake for livestock and consequently reducing the trekking distances and enhancing faster livestock growth and reproduction.
- This was mainly attributed to the recent rains and is normal during this time of the year. There was substantial regrowth of the grass species in most parts of the district and this may last until the next rainy season.

1.3 Water sources and availability

1.3.1 Use of water sources

- The main water sources available to the pastoralists in the district are Boreholes, river Tana, Benane springs, natural water holes and water pans. Water is available to livestock with most of natural water holes and water pans collecting substantial amount of water thus reducing congestions at water points.

1.3.2 Household access to water

Water accessibility for household has relatively improved when compared with the preceding month. The distances covered by pastoralist reduced with an estimated average distances of less than 8 km covered.

1.3.3 Livestock access to water

Livestock access to water continued to increase compared with the preceding month. The distances covered were within the livestock grazing point. The rains increased water and forage availability, thus increasing the accessibility of the same. Most of the boreholes in the district were not in use.

1.4 Emerging issues

1.4.1 Insecurity/Conflict/ Human displacement.

- No conflict over natural resource utilisation and human displacement was reported in the course of the month under review. However, there was dispute over boundaries along the Lagdera and Wajir South districts border but it is being addressed by the local provincial administration and elders from both districts.
- The security situation remained tense along the Kenya/Somalia border and there is high surveillance.

1.4.2 Migration

With most of the livestock which crossed to Somalia having returned last month, there was no livestock migration reported outside the district during the month. This was related to the rain coverage of the entire district.

1.4.3 Implications on food security

Increasing water availability and accessibility, improving forage cover, reduced cost of watering livestock has positive food security implication in the district.

2.0 Rural economy indicators (food availability)

2.1 Livestock production

2.1.1 Livestock body condition

The body condition of livestock continued to improve when compared with the preceding month. This was due to the availability of abundant water and pasture/browse. The continuous improvement in livestock body condition will also influence market prices and demand, leading to better household income.

2.1.2 Livestock health and diseases

There were suspected and reported cases of diseases such as lumpy skin diseases, contagious caprine pleura pneumonia and foot and mouth. The diseases need to be contained to increase production.

2.1.3 Milk production

Milk production in the entire district increased relatively when compared with the preceding month. The increase may be attributed to improvement in livestock body condition, coupled with increase in birth rate of various livestock species. This is expected to continue with the season rainy season.

2.2 Crop production

2.2.1 Timeliness and status of various crop production activities

Farming was ongoing along River Tana and the main crops grown under irrigation were bananas, pawpaw, melon, lemon, onions and tomatoes. Irrigation farming was constrained by lack of good market prices and over production, poor/lack of technical knowhow, poor market research and information system leading to some farmers capacities reduced and ending up in losses.

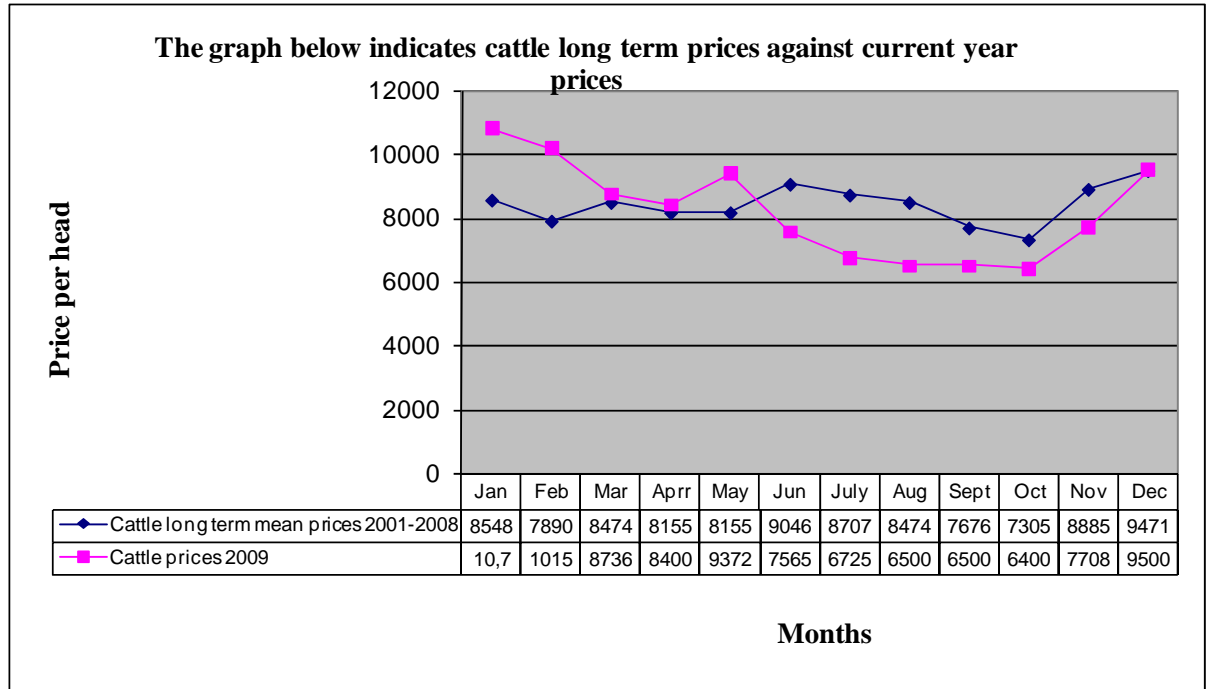
2.2.2 Pests and crop diseases

No crop pests or diseases were reported in the course of the month under review.

3.0 Access to food

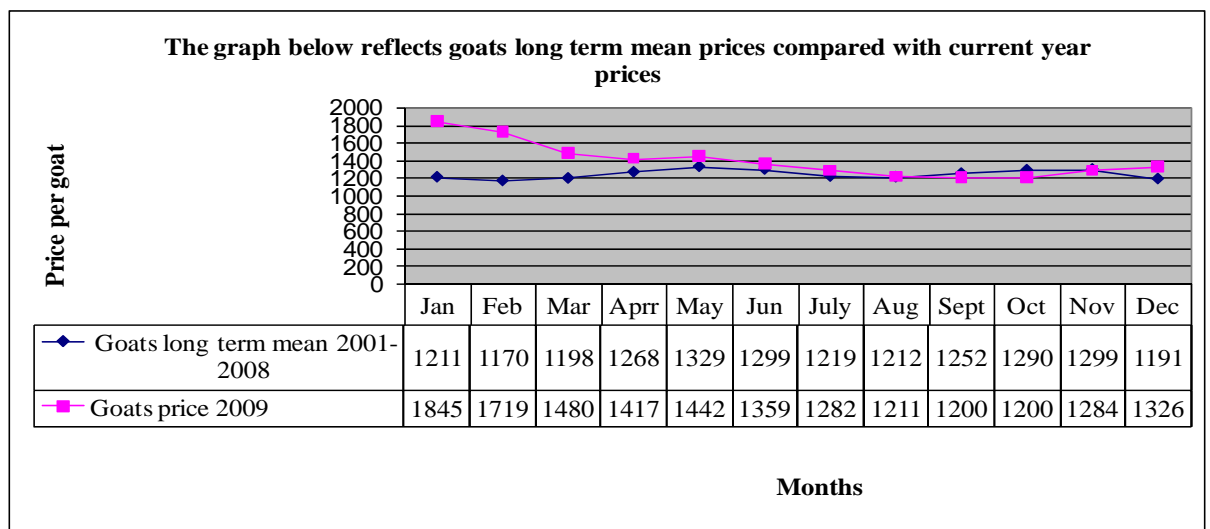
3.1 Livestock marketing

3.1.1 Cattle prices



Cattle prices continued to increased when compared with preceding month. The increase was attributed to the continued improvement in pasture and water availability and accessibility, which in turn improved the body condition and also some farmers withholding livestock for fattening. Cattle traded at Ksh7,708 in November and Ksh9,500 in December.

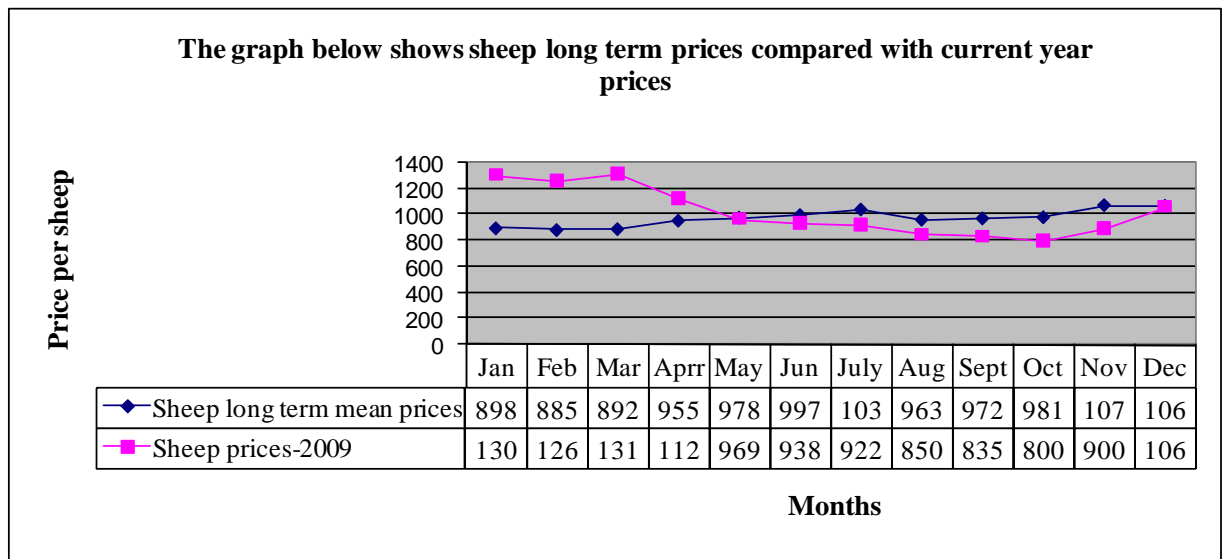
3.1.2 Goats prices



The prices of goats show an increasing trend when compared with the preceding month. It was Ksh1,284 in November and Ksh1,326 in December. This was mainly attributed to availability of browse and high feed conversion efficiency of goats. The price was above the long term mean for the month and an indication of better household economy.

3.1.3 Sheep prices

Sheep prices continued to increase compared with the preceding month. The improvement in price was attributed to the improvement in pasture and water availability. Sheep traded at Ksh900 in November and Ksh1063 in December. The price was within the long term mean for the month.

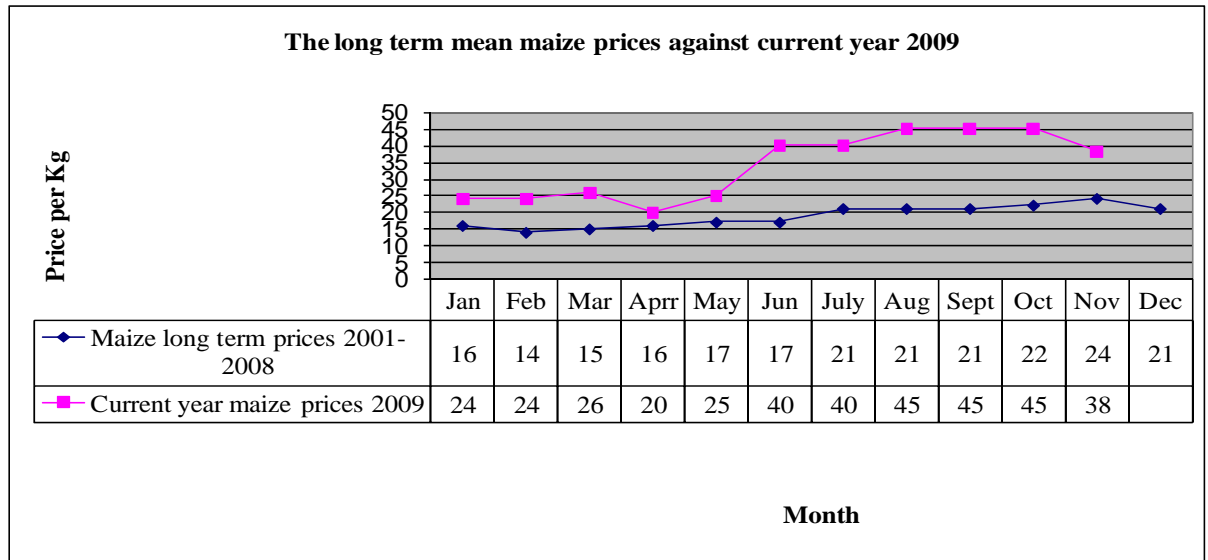


3.2 Livestock sales

The livestock sales rate increased when compared with the preceding month. This was due to improving livestock prices, increasing demand and livestock owners wanting to repay the debts incurred during the drought period. The sales did not peak due to some pastoralists withholding livestock for fattening and waiting for market prices to increase considerably.

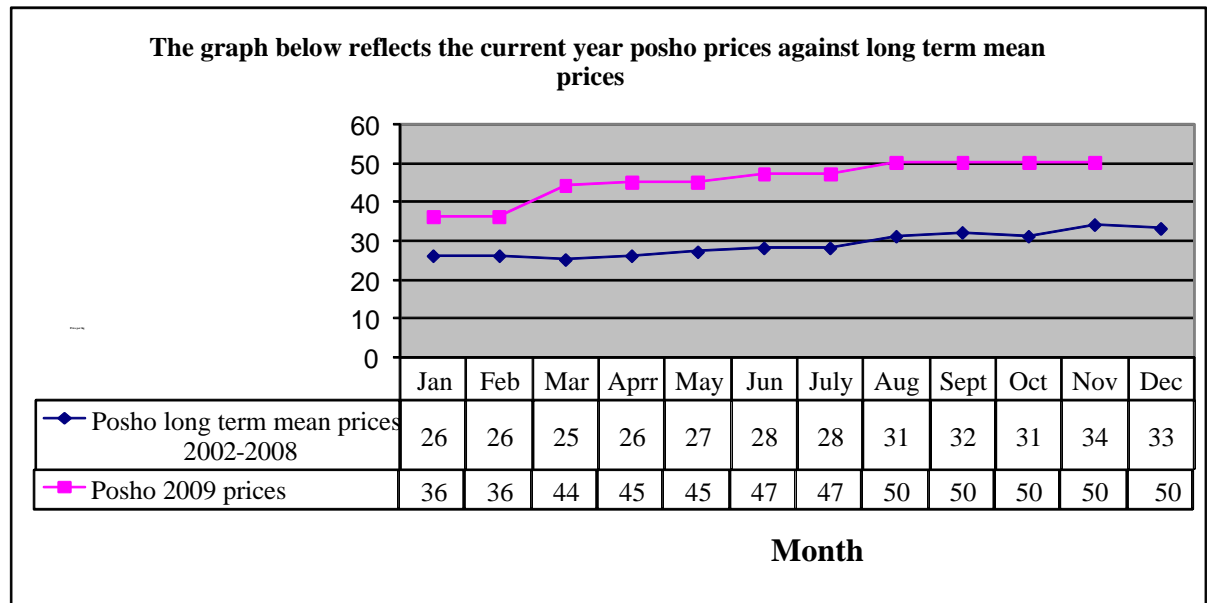
3.3 Food prices

3.3.1 Maize prices



Maize prices reduced when compared with the preceding month. However, this was above the long term mean prices. The reduced price was attributed to availability of cereals from general food distribution which was carried out in two cycles at once. The price of a kilo of maize was Ksh45 in October and Ksh38 in November.

3.3.2 Posho (locally milled and sifted) prices



The prices of posho and sifted maize flour, which are both end products of maize, remained stable when compared with the previous month but were above the long term mean. This was dictated by the price of maize. The average price was Ksh 50 per kilo.

3.3.3 Purchase price of other food commodities

The prices of other essential food products showed an increase in trend when compared to the preceding month and it was above the normal. This was brought about by the escalation of food prices in the country and due to market liberalisation.

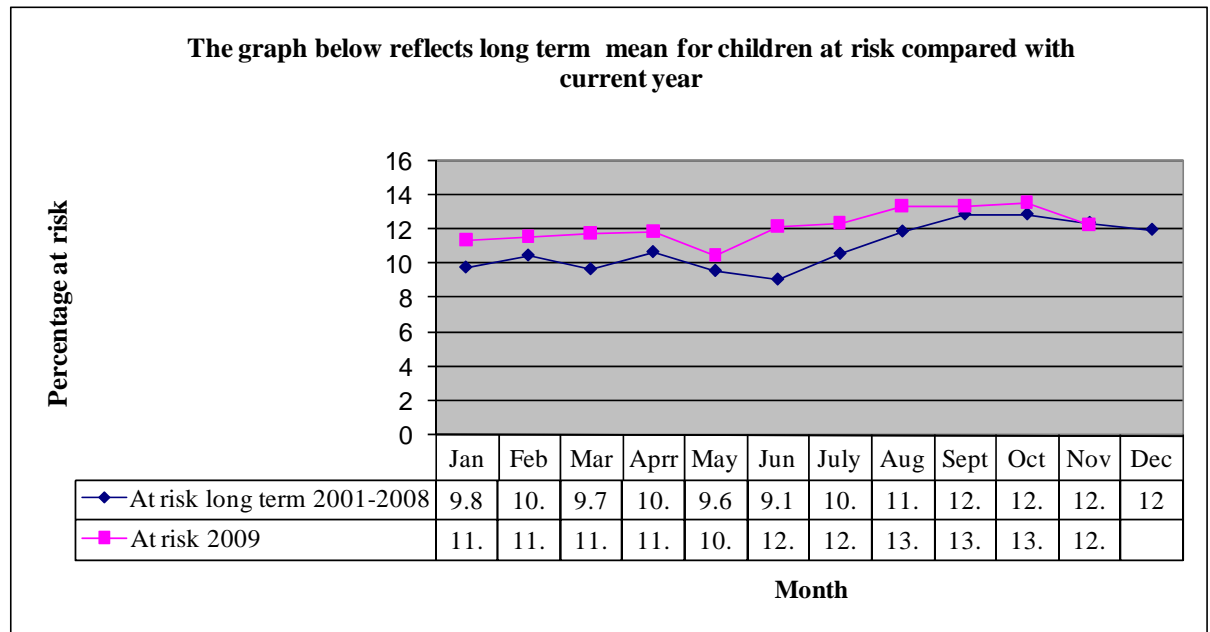
3.4 Food security implications

Improving livestock prices, availability of livestock products, reduced cost of livestock management and availability of vet services to pastoralist was an indication of positive food security implications.

4.0 Human welfare indicators (Utilisation of food)

4.1 Nutritional status

- The nutrition status of children below five years continued to improve when compared with the preceding month.
- The percentage of those rated at risk of malnutrition dropped to 10.8 from 12.3% in November. However, the rate was within the long term mean. The improvement was due to availability of livestock products, supply of CSB to households and improved household income through sale of livestock.



Number of children=1384

4.2 Human health

Cases of malaria and diarrhea were reported. The condition is expected to increase due to the rains which create good medium for breeding and water becomes source of contamination.

4.3 Flagged areas (affected areas)

- There were no flagged areas but due to the current rains and consequent flooding, water borne disease may break out and cause harm to the population.

5.0 Current interventions

5.1 Non-food interventions

- Repair, servicing and procurement of livestock boreholes equipment continued in preparation for the next dry spell.
- Provision of seeds for planting under hot community project.
- Disease surveillance, vaccination and livestock treatment throughout the month.
- Community capacity building by Arid lands Resource Management Project.
- Support of microfinance for communities continued during the month.
- Njaa marufuku Kenya project and national agriculture and livestock extension programme by Ministry of Agriculture continued to be implemented in the district.
- Mobile outreach services were carried out by the Ministry of Health.

5.2 Food aid

- EMOP relief food distribution covering a population of 150,000 beneficiaries.
- School feeding programme provided by WFP targeting 42,069 children continued during the month.
- Supplementary feeding targeting 10,200 children under five, pregnant and lactating mother continued.

5.3 Coping strategies

- Petty trade as an alternative livelihood.
- Reliance on remittances.
- Credit and borrowing.

6.0 Recommendations to DSG and KFSM

- Stabilise food aid until full recovery from the drought is achieved.
- Continue to support boreholes on repair, servicing and maintenance to enhance water supply during the dry spell.
- Support the rapid response teams to attend to any emergencies.
- Provide breeding stocks to livestock keepers to improve quality of breeds.
- Train communities on crop and livestock husbandry practices.
- Support communities on financing micro-enterprise development to enhance their livelihoods.
- Initiate restocking programme for those who lost their livestock.
- Continue to capacity build pastoral communities on peace building and conflict resolution.
- Support small-scale farms along River Tana with farm inputs, construction of watering canals and value addition activities.

- Set up contingency fund across the departments in a coordinated structure.
- Support the veterinary investigation laboratories on disease surveillance before any outbreaks are reported.
- Mobilise and sensitise communities on diversification of livelihoods.
- Continue to provide mobile outreach services for centre with no health facilities.
- Initiate a forestation programme to improve the denuded land.
- Strengthen stakeholder's co-ordination and participation in development activities.