

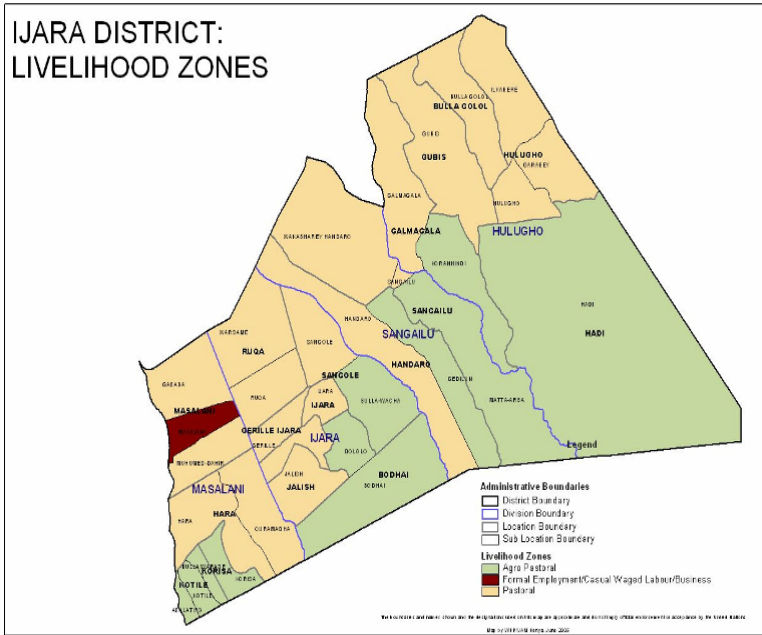


**OFFICE OF THE PRIME MINISTER
MINISTRY OF STATE FOR THE DEVELOPMENT OF NORTHERN KENYA AND OTHER ARID LANDS
ARID LANDS RESOURCE MANAGEMENT PROJECT II**

DROUGHT MONITORING BULLETIN, DECEMBER 2009

Ijara District

Warning stages



Livelihood Zone	Stage	Trend
Pastoral	Alert	Worsening
Agro pastoral	Alert	Improving
Formal employment/ Casual labor	Alert	Worsening
District	Alert	Worsening

Seasonal Calendar

<ul style="list-style-type: none"> Milk yield drops Livestock moves towards dry season grazing zones <p><u>Lean period for the pastoralists</u></p>	<ul style="list-style-type: none"> High milk yield Livestock moves towards the traditional wet grazing areas High calving, kidding and lambing rates 	<ul style="list-style-type: none"> Low milk availability Livestock moves towards the fall back dry seasons grazing areas (Boni forest) Increased human-wildlife conflicts <p><u>Lean period for the pastoralists</u></p>	<ul style="list-style-type: none"> High milk yield Livestock moves towards traditional wet seasons grazing areas High mating rates 								
Short Dry Spell			Long rains			Long dry spell				Short rains	
Jan	Feb	Mar	Apr	May	Jun	Jul	Aug	Sept	Oct	Nov	Dec

Situation overview

- The district received rainfall in the first week of December in some of the sentinel sites but it ceased thereafter and high temperatures prevailed across the entire district.
- Browse status remained fair in terms of quality and quantity while pasture levels started to diminish in quality largely because of wilting occasioned by the prevailing high temperatures. This scenario had the effect of forcing pastoralists to drive back their herds towards the Southern areas of the district that lie on the fringes of the tsetse infested Boni forest too early in the season.
- Most of the medium and large water pans in all of the livelihood zones (with exception of areas in central and north of Ijara division and those located to the north of Masalani division) still contained good volumes of water which could last for the next one month. Slight increase in average prices of all categories of livestock was observed in all the livelihood zones except cattle, which recorded Ksh9,497 for December against Ksh 9,946 in November. Goats fetched the highest income for the pastoralists, recording an average price of Ksh1,798 compared to Ksh1634 in November, while sheep prices remained stable, trading at Ksh997, up from Ksh994 the previous month.
- The livestock body condition and health was rated from fair to good for all categories in all the livelihood zones with goats exhibiting the best body condition and sheep exhibiting the worst body condition in the entire district.
- Compared to last reporting period, the nutrition status of children below 5 years (based on MUAC < 135mm measurement) improved slightly, with the percentage of those rated at risk of malnutrition dropping from 28.3% last month to 27.4%. This is, perhaps, attributed to increased availability of milk and the introduction of protection ration to some of the most vulnerable households at the district headquarters.
- Both outward and inward migration of livestock in the district was observed during the month.
- The water situation remained largely stable in most parts of the district with exception of Masalani sentinel site where consumers had to trek up to 5 km on average in search of water because of scarcity of the commodity occasioned by a breakdown of the piped river-based water system that commonly serves (albeit inadequately even in normal times) the urban centre and upon which also the peripheral dwellers usually depend. Thus on average, trekking distance for households to water sources was recorded at 2.5 km while average distance between grazing areas and water sources was recorded at 9.8 Km for December against 8 km for November '09.
- Cases of CCPP that affected goats were reported while there were reported cases of CBPP and Blank quarter anthrax that affected cattle in agro-pastoralist zones especially in Hara, Gababa, Hulugho, Sangailu, Kotile, Dololo, Sangole and Bulto Hama. In the meantime, the veterinary department reported suspected cases of the dreaded RVF in goats in Sangailu and Gababa while trypanosomiasis remained around-the-clock problem in all the livelihood zones and affected all categories of livestock indiscriminately.
- The mortality rate of cattle decreased recording 2.2% for December '09 as compared with 4.8% for November '09 while that of sheep and goats was 3.2% and 2.3% respectively for December '09 as opposed to 4.6 and 3.8 % for November '09. This reduction in mortality rates in livestock may be attributed to up-scaled efforts in vaccinations and treatment of livestock in the entire district by the veterinary department with support from other stakeholders spearheaded by ALRMP II.

- The average birth rate for cattle during the reporting period was recorded at 9.7% while that of sheep and goats recorded 11% and 9% respectively.
- The availability of milk for consumption in all the livelihood zones remained low.
- Generally, the drought situation in the entire district was at ALERT stage with Worsening Trend

Recommendations to DSG and KFSM

- Strengthen outreach clinics and organize for medical camps with other actors.
- Measures to curb wildlife menace should be put in place and be strengthened through community development projects by KWS as part of its corporate responsibility.
- Livestock vaccination campaigns and treatment should continue across the district.
- Provision of safe drinking water to prevent outbreaks of diarrhea and other communicable diseases.
- Continue to encourage and support crop farming in the agro-pastoralist zones in order to enhance food security in the district through programmes such as Njaa Marafuku, provision of seeds and other inputs .Construction of rain water harvesting structures' programme for crop farming that was recently rolled out by the department of Agriculture should be expanded and up scaled in terms of funding.
- Reducing levels of malnutrition in pregnant and lactating mothers, and children under five years through provision of supplementary feeding and medical awareness programmes should be properly rolled out and effectively implemented district wide.
- Measures to combat malaria and implemented good governance of water should be implemented. This should be combined with effective water sources surveillance and quality control.
- Promote community wildlife conservancies, eco-tourism and carryout value addition activities to on-going natural resource-based ventures currently being implemented in the district such as honey production, aloe extraction, hay bailing etc to expand on drought Coping mechanisms of communities by way of ushering in alternative incomes through improved natural resource management.
- Conduct nutritional survey and house hold food security assessments.
- Introduce Food for Asset (FFA) programme.

1.0 Environmental indicators (stability)

1.1 Rainfall

Low intensity rainfall of varied distribution was recorded in some of the sentinel sites during the first week of the month under review. Thereafter, the entire district maintained clear skies and atmosphere was engulfed in sweltering heat in day time while temperatures subsided to bearable levels during the night. The trend was not normal at such time of the year as rains were supposed to continue falling up to end of December 2009 in the district.

1.2 Condition of natural vegetation and pasture

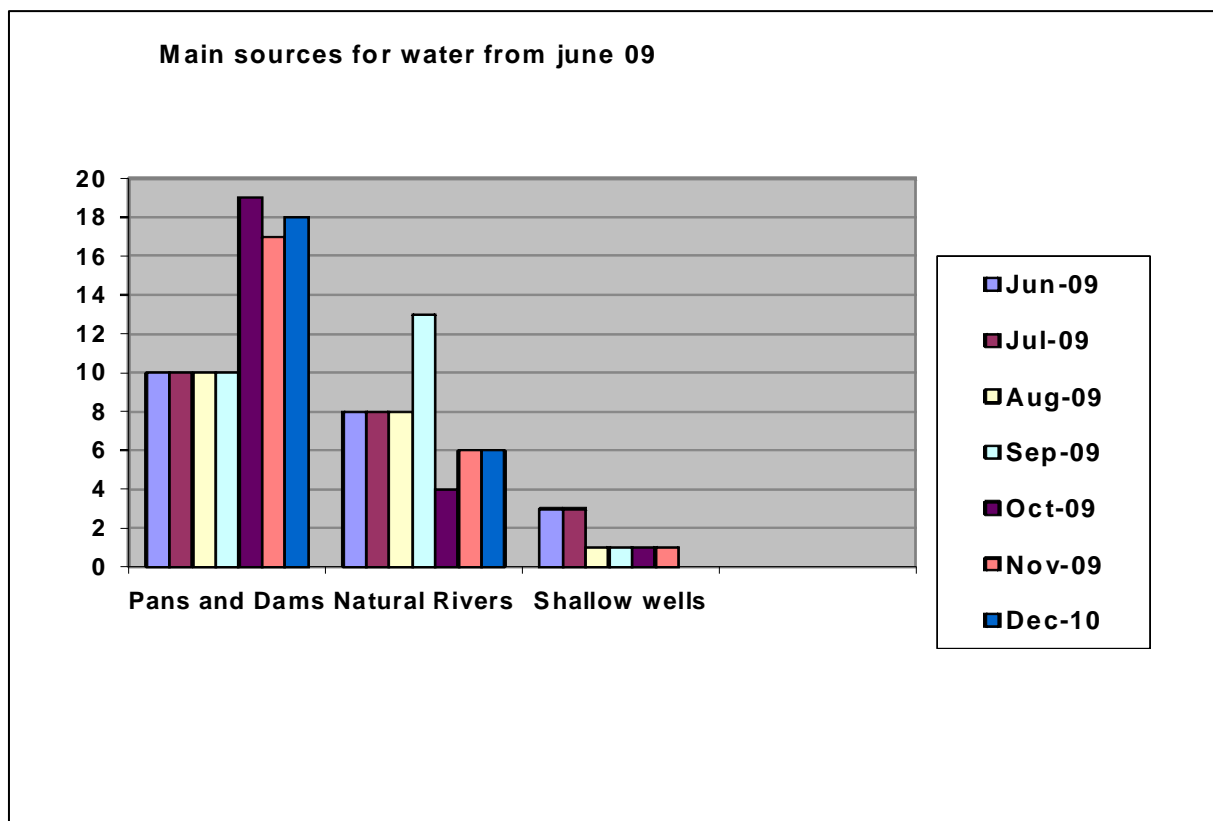
- Browse condition remained good in terms of both quantity and quality. However, the quality of pasture has deteriorated, ostensibly, due to wilting in the face of the unbearable heat occasioned by the prevailing high temperatures. In the meantime availability of abundant pasture of good quality was limited to areas within and on the periphery of the Boni forest.
- Body condition of goats and cattle in the district was rated fair while the body condition of sheep in all the livelihood zones was still poor.
- The observed trend was not normal at the time of year as pasture, browse and water were supposed to be available in abundant quantities across all livelihood zones while livestock body condition was expected to be good. The trend had negative impact on household food security since the body condition of livestock combined with a mating season has undermined production of milk. The existing household food insecurity was further exacerbated by a mysterious failure to attract livestock traders to the district for the third month in rainy season and this is, perhaps, attributed to the melt down from the poor economic trends of global markets.

1.3 Water sources and availability

1.3.1 Use of water sources

- Pans and the River Tana were the major water sources in the district for both domestic and livestock use.
- Some medium and large water pans that were recharged by the recent rains still contained good quantities of water thus relieving inhabitants and their livestock from water stress in parts of the district within agro-pastoral livelihood zone while all small pans and natural pools located in the pastoralist livelihood zone have already dried up following the intense heat in environment in the period under review. However quality of water still remained poor and likelihood of diarrhea and other water borne diseases was high if the trends in rainfall persisted for the next few weeks.
- Accessibility to River Tana for watering livestock was marred by disputes between pastoralists and crop farmers.
- The observed trend was not normal because the short rains season was expected to be at its peak and recharge all water sources across the entire district.

1.3.2 Average distance (KMs) to water sources



- The average distance to water sources from grazing areas increased and was recorded at 9.4km compared to 8 km in November while that of domestic households was recorded at 1 km. as compared to 1.1 km for November.
- Generally, the observed situation was not normal as the distance between water sources and households was supposed to be less than 3 km following the early onset of short rains season. On average household members spent about 3 hrs return distance per water drawing session thus spending a lot of time daily in meeting domestic water requirements .This translated into less time being allocated for other socio-economic engagements by the community and had negative impact on household food security.
- During the month the main water sources being utilized were Pans/Dams and the river Tana.

1.4 Emerging issues

1.4.1 Conflicts/ insecurity/human displacement

Conflicts over right of access/ use of river Tana between residents of Tana river district and Ijara districts has been reported. Illegal logging activities by timber poachers continued unabated in the Boni forest.

1.4.2 Migration

Most of the Livestock stayed within satellite camps of the wet season grazing areas inside in the district as well as Fafi to the north. However, migrations into the district from Fafi outward of district towards the southern forest fringes bordering the coastal strip have commenced during the month. This was not normal at this time of the year.

1.5 Implications on food security

The above conditions are expected to negatively affect food security situation.

2.0 Rural economy indicators (food availability)

2.1 Livestock production

2.1.1 Livestock body condition

- The livestock body condition and health status of goats showed some improvement. However, there was no marked improvement in the body condition of cattle while that of sheep remained as in the previous month. Isolated cases of CBPP and black-quarter anthrax were reported to affect cattle in pastoral livelihood zone while there were reported cases of CCPP and RVF that affected goats in all the livelihood zones of the district. Tsetse fly menace remained widespread and affected all livestock categories indiscriminately.
- However, mortality rate was minimal but with no much change in herd growth for individual households because this is largely a mating season rather than a calving/kidding season for most livestock categories owned.
- No significant increase in milk yield was realized across the entire district when compared with preceding month and this was, perhaps, attributed to deteriorating pasture quality.
- This condition negatively impacted on the nutrition status of children under five years besides undermining household incomes.

2.1.2 Livestock diseases

Diseases that were prevalent and affected livestock in all the livelihood zones are as indicated below: -

- Cattle: LSD, CBPP, Trypanosomiasis and black quarter anthrax.
- Sheep: Helminthiasis, sheep introtoxicimea, pulpy kidney disease.
- Goats: CCPP, Helminthiasis & Trips.

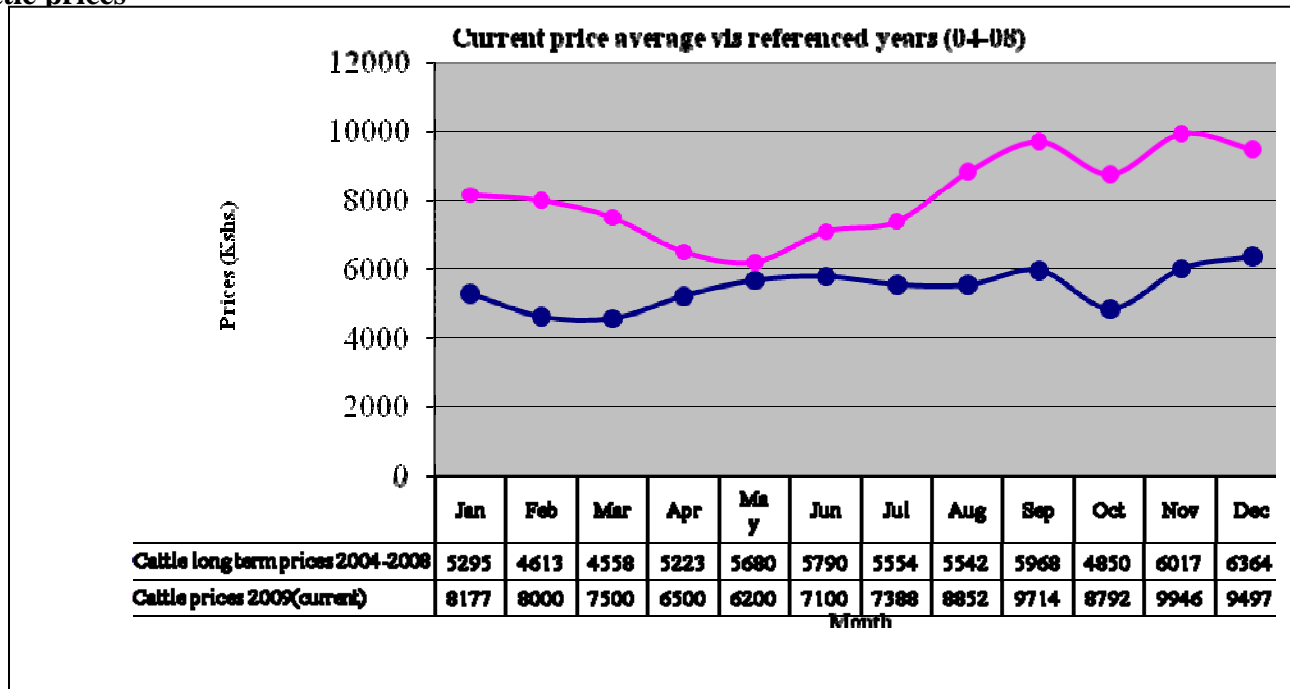
2.1.3 Milk production

No significant increase in milk yield was observed and the number of household that could afford for “Everyone” had not changed significantly from numbers recorded in previous month. This is perhaps attributed to most lactating herds drying up ahead of mating. The decreased milk production has negatively affected the household food security.

3.0 Access to food

3.1. Livestock marketing

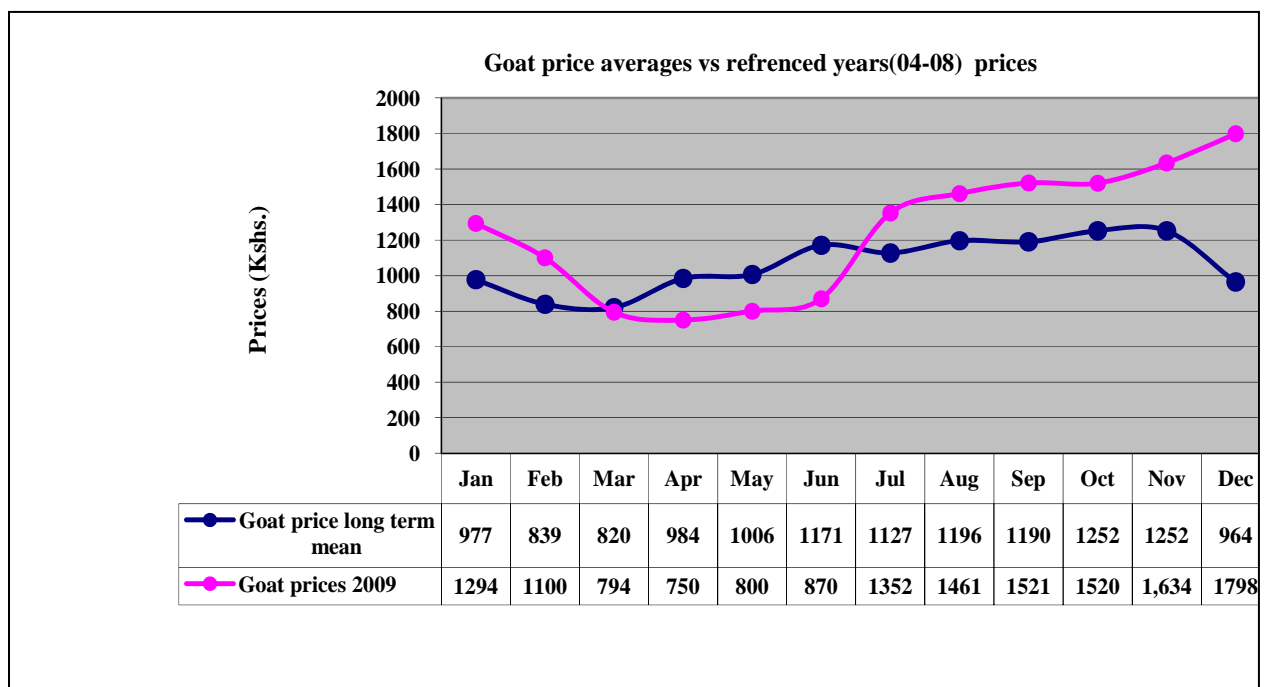
3.1.1 Cattle prices



N-235

Cattle prices decreased from Ksh9,946 to Ksh 9,497. The trend was not normal in such season of the year and had negative impact on food security. Agro-pastoralist and pastoralist livelihood zones recorded the highest cattle prices at Ksh14,000 and Ksh10,872 respectively. The price was, however, still higher than the average of Ksh6,364 recorded for the same period of the reference year (04-08).

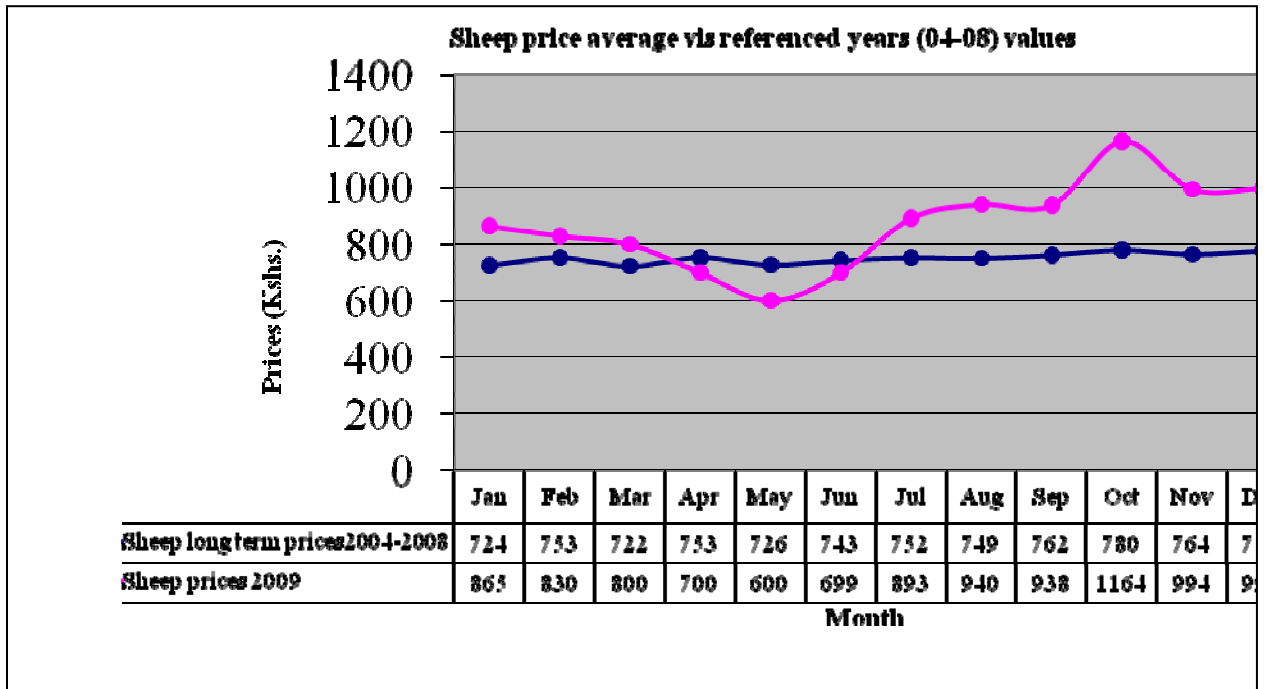
3.1.2 Goat prices



N- 201

- Average goat prices increased slightly from Ksh1634 to Ksh1,798. Agro-pastoralist livelihood zones recorded the highest prices at Ksh2,000 and lowest at 1,741 while pastoralist livelihood zone recorded the lowest at Ksh1,362. The price was much higher than the reference year's Ksh964.

3.1.3 Sheep prices



N-220

The prices of sheep appreciated from Ksh994 in November to Ksh997. The Agro-Pastoralist livelihood zones recorded the highest price at Ksh1200 while pastoralist livelihood zones recorded the lowest at Ksh500. The price was higher than Ksh778 recorded for the same period of the reference year (04-08). The trend had negative impact on household food security.

3.1.4 Livestock sales

The rate of livestock sales increased when compared to last reporting period for all categories of livestock. This trend was not normal at the time of year and had no impact on household food security.

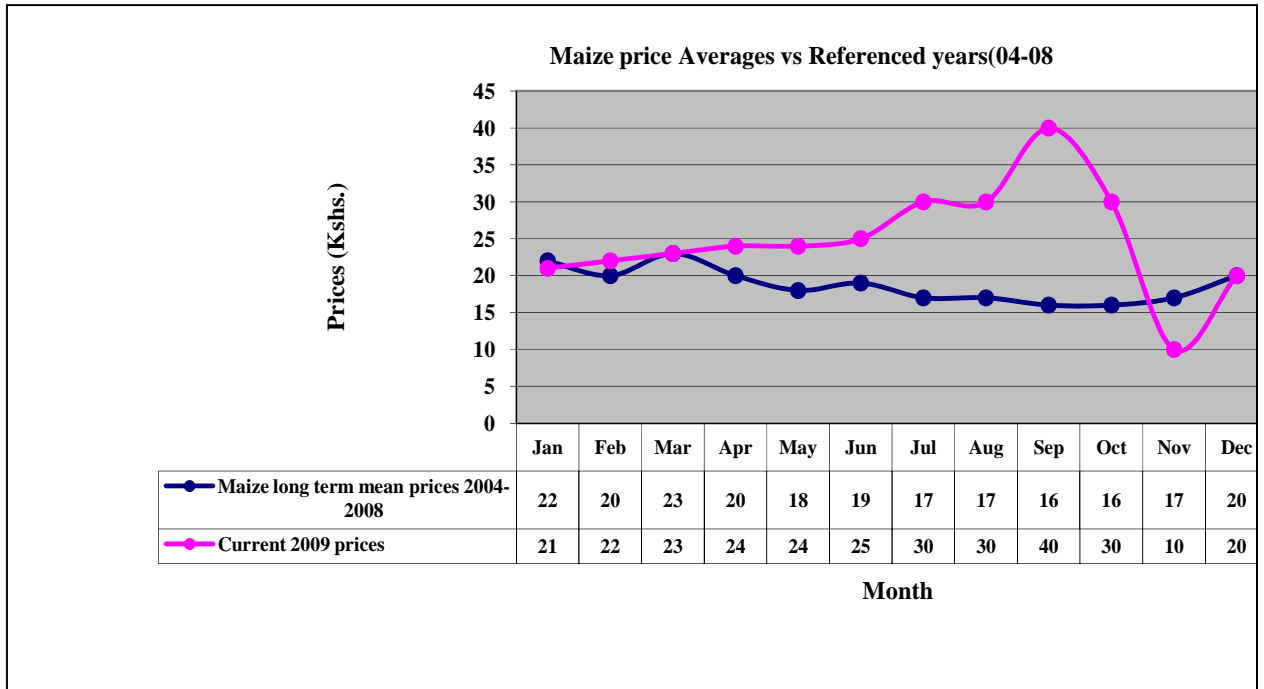
3.2 Milk consumption

Milk consumption was recorded to be still low. On average 10% of all households in the district could provide milk for their members.

3.3 Food prices

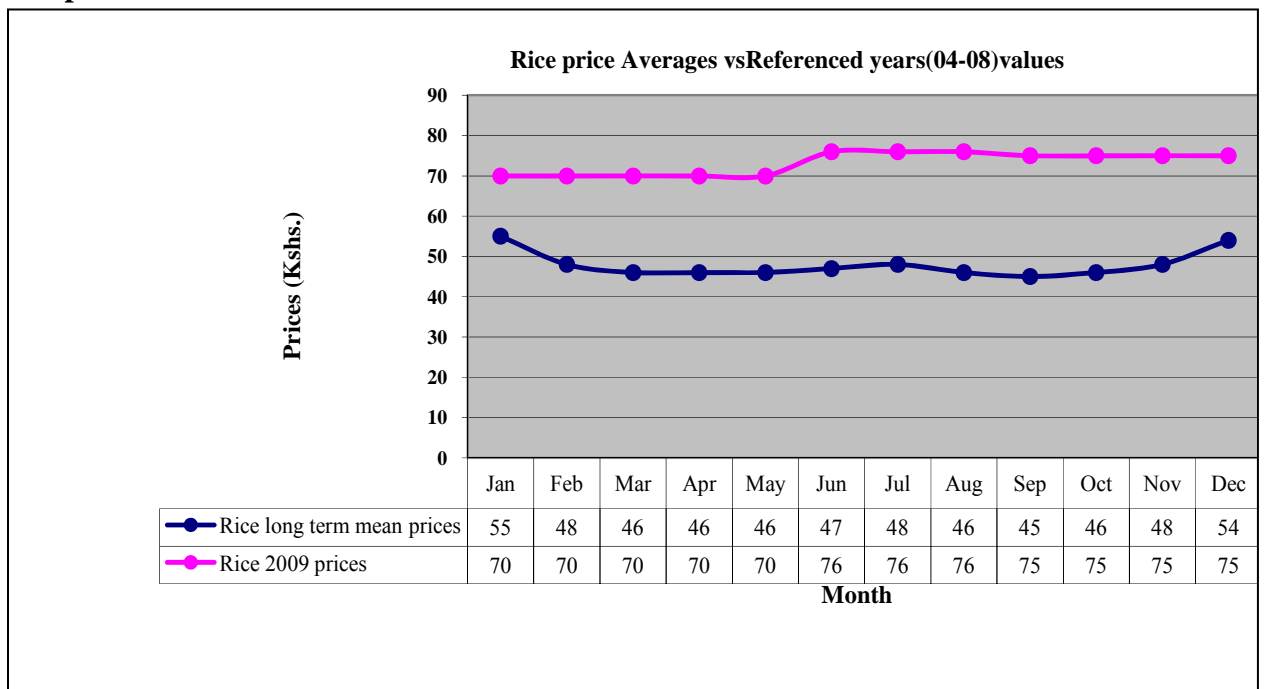
Prices of most foods remained stable during the month under review, with no change from previous month levels.

3.3.1 Maize prices



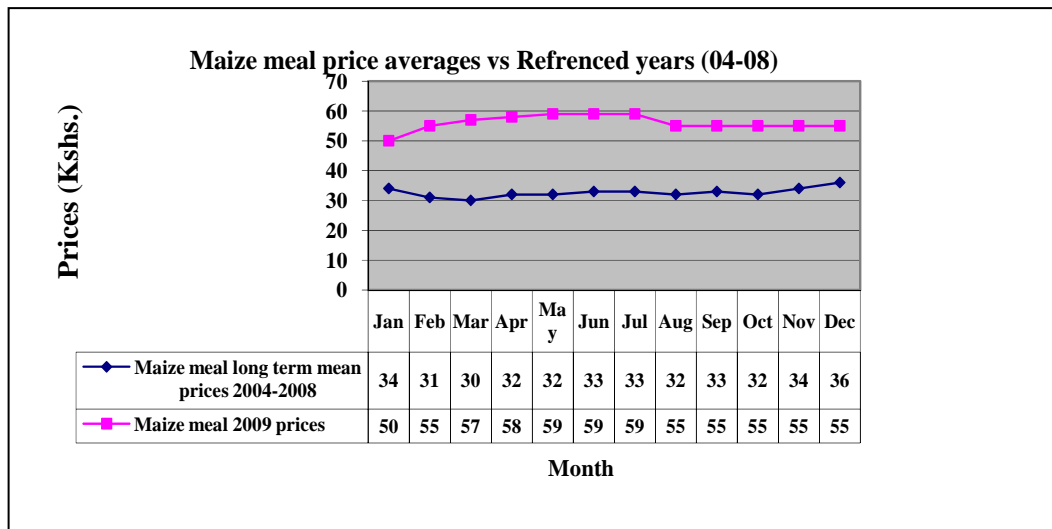
The average price of maize increased from Ksh10 in November to Ksh20 per kilo. The price appreciated slightly when compared to the preceding month but had no impact on household food security.

3.4.3 Rice prices



average prices of rice remained stable at Ksh75 per kilo. This was much higher compared to the Ksh54 recorded during the same period of the reference year (04-08). The trend was not normal and had negative impact on food security.

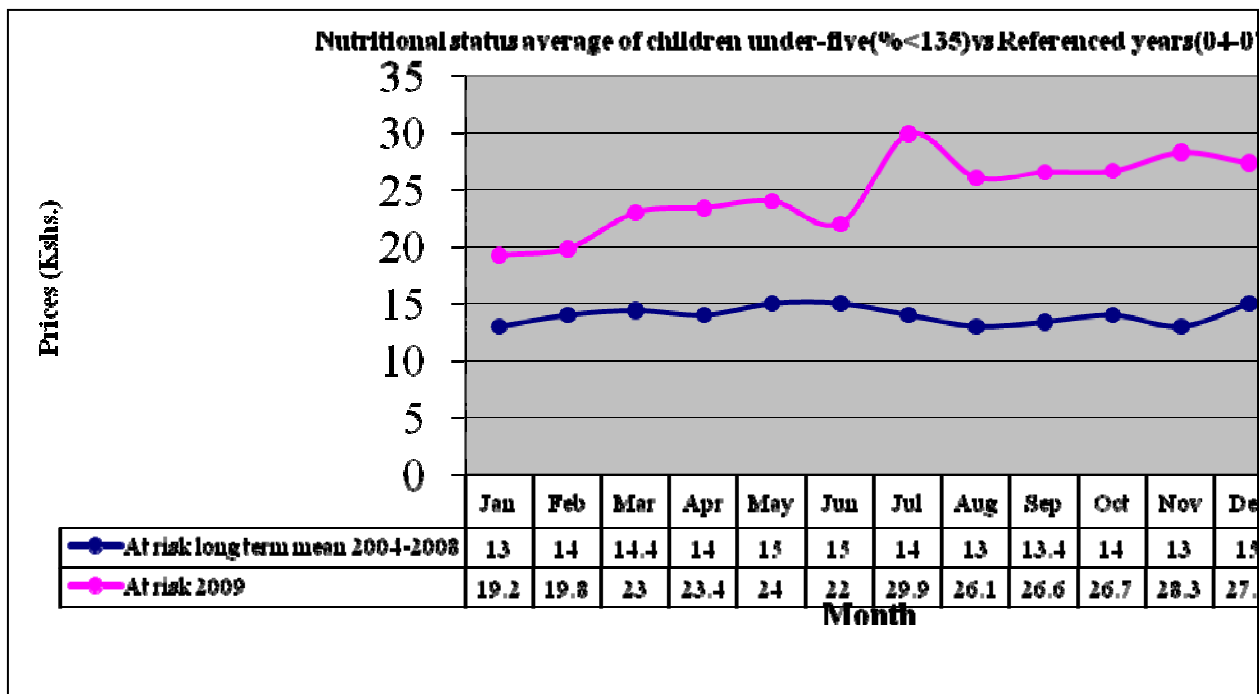
3.4.2. Posho (Sifted maize meal) prices



The average price of sifted maize remained stable at Ksh55 per kilo. Relief maize distribution in all the sentinel areas could not even influence high price of this premium staple food. The price was much higher compared to the Ksh36 recorded during the same period of the reference year (04-08). The trend had negative impact on household food security, as most households could not easily access this staple food.

4.0 Human welfare indicators (stability)

4.1 Nutrition status



- Compared to last reporting period, the nutrition status of children below 5 years (based on MUAC < 135mm measurement) improved slightly, with the percentage of those rated at risk of malnutrition dropping from 28.3% last month to 27.4%.
- This is, perhaps, attributed to increased availability of milk and the introduction of protection ration to some of the most vulnerable households at the district headquarters.
- However, inadequate provision of supplementary feeds for children in outlying sentinel sites for the last five months under the ongoing EMOP in the district may be undermining the full recovery of the under fives from the vagaries of malnutrition and its accompanying afflictions. The most affected sentinel sites in this case being Bodhai, Koranhindi, Sangailu and Ijara.
- Areas recording high percentages of children at risk of malnutrition were recorded as Pastoralist and agro-pastoralist livelihood zone of Aballatiro, Koranhindi, Handaro, Sangailu and Ijara. Pastoralist livelihood zone recorded 43.9 % of all children at risk while agro pastoral livelihood recorded 15.1%.

4.2 Human health

No major disease outbreaks were reported. However, malaria, bilharzia and upper respiratory tract infections were the common ailments reported.

4.3 Flagged areas

Pastoralist and agro-pastoralist livelihood zones of Koranhindi, Sangailu, Ijara and Bodhai areas were most affected.

5.0 Current interventions

5.1 Non- food interventions

- Construction of water harvesting structures for crop production by Ministry of Agriculture.
- Seeds distribution to crop farmers by ministry of Agriculture
- Conducting of mobile outreach clinics by MOH/ALRMP 11
- Distribution of CSB by MOH/UNICEF
- Vaccination against CBPP and RVF are currently on going.

5.2. Food aid

Relief food being distributed under EMOP by KRCS.

5.3 Coping strategies

Among the coping measures adopted during the month were:

- Collection and sale of bush products including honey and Aloe extracts.
- Herding and pan excavations.
- Sales of quarry products.
- Remittances from relatives

6.0 Recommendations to DSG and KFSM

- Disease surveillance should be sustained by veterinary department and other stakeholders to contain any outbreaks. All stakeholders to support vaccination and treatment of animals.
- Tsetse fly control program should be launched in the district immediately.
- Disease surveillance should be strengthened by the Ministry of Health to avert increase in malaria incidences, cholera and other water-borne diseases. Rural health facilities to be stocked with sufficient drugs for easy access by pastoralists.
- Bilharzia control measures should be put in place by the medical authorities in the district.
- Agricultural extension services should be strengthened by DAO.
- Impending conflicts over the three mile strip along the Tana River to be resolved by the concerned authorities. Action: District Peace Committees, Local Authorities and the DSCs.
- Control measures on forest and wildlife menace to be put in place.- Action KWS, KFS, Local Authority, IPAD, Conservation groups, Provincial administration and legislators.