

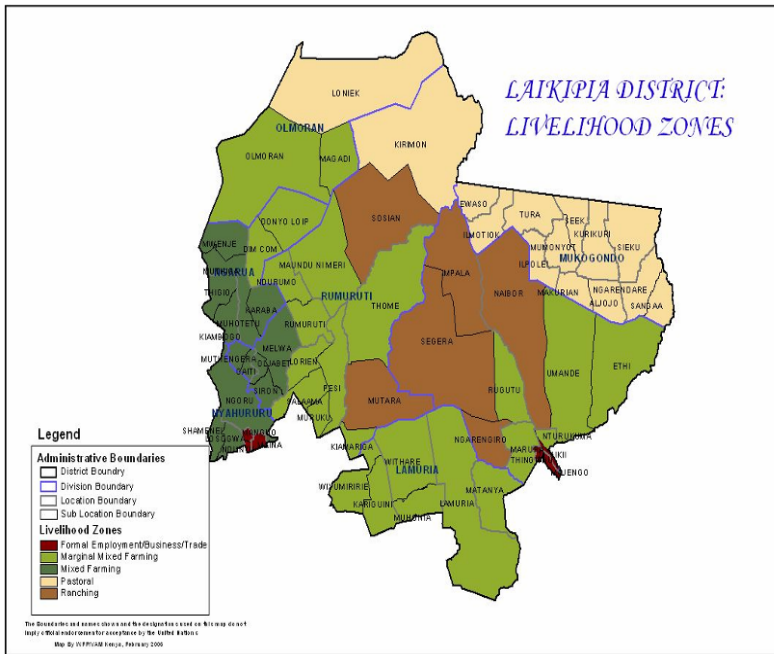


**OFFICE OF THE PRIME MINISTER  
MINISTRY OF STATE FOR THE DEVELOPMENT OF NORTHERN KENYA AND OTHER ARID LANDS  
ARID LANDS RESOURCE MANAGEMENT PROJECT II**

**DROUGHT MONITORING BULLETIN, DECEMBER 2009**

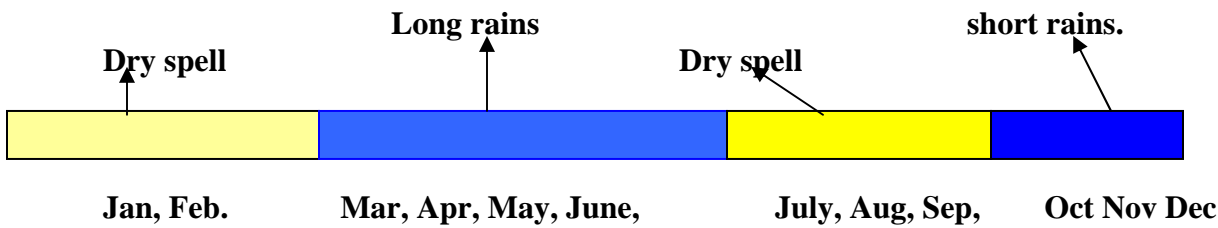
**Laikipia East, West, Central,  
Nyahururu and North Districts**

**Warning Stages**



Livelihood Zone	Warning Stage	Trend
Pastoral All Species	Alert	Improving
Agro – Pastoral	Alert	Improving
Mixed Farming	Alert	Improving
Marginal Mixed Farming	Alert	Improving

**Seasonal calendar**



**Situation overview**

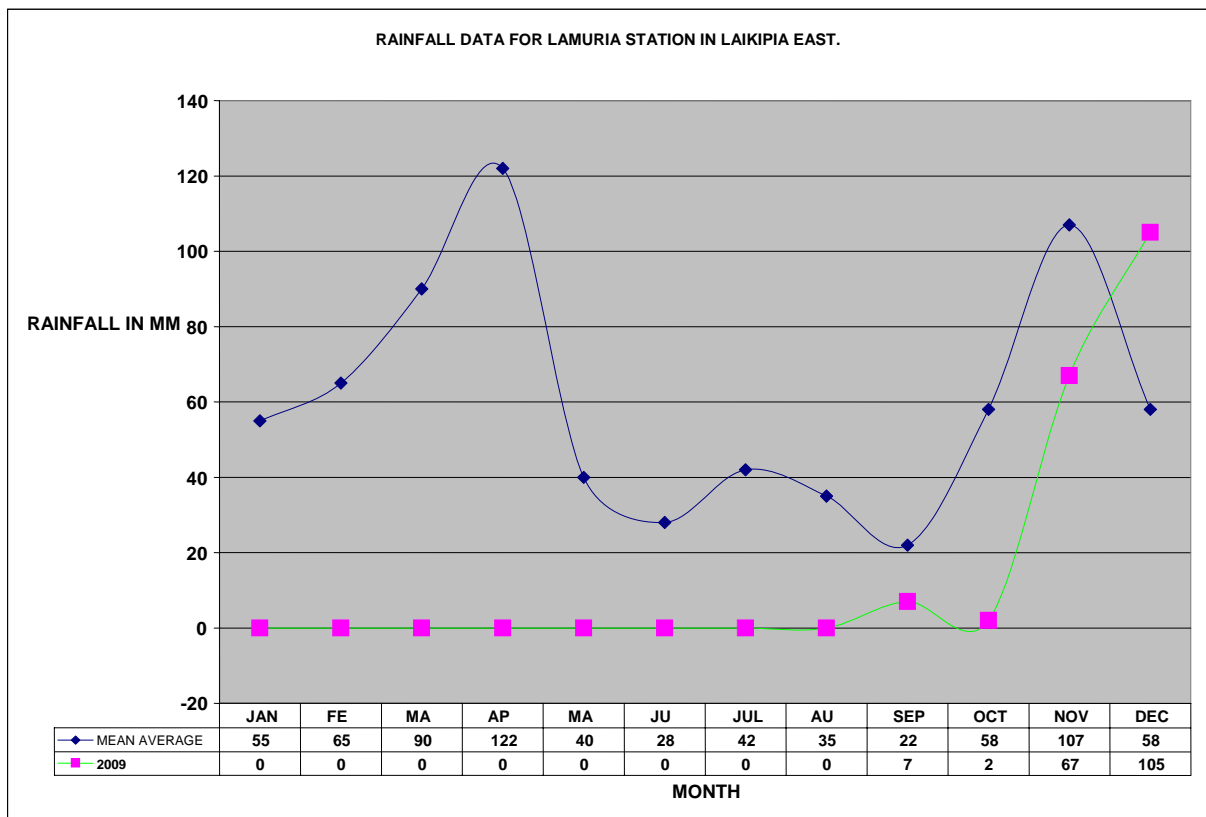
- During the month of December the rains resumed and they are heavy. Rumuruti received heavy rains, which caused damage to property and the Lorian swamp broke its banks and destroyed houses and crops and resulted in the death of one child.
- Water was available and most of the dams and pans refilled while pasture regenerated in the pastoral areas of Mukogodo.
- Crop improved, though they were affected by the failure of the rains in November and hopes for harvest of beans were high, though the maize that was affected might survive if the rains continue properly in January in Laikipia Central and Laikipia East.
- In Ngarua and Nyahururu, which are the high potential areas, the rains were not as good as in Laikipia East but farmers who usually plant only during the long rains (March to June) planted quick maturing crops as they had a total crop failure during the last season.
- Human/wildlife conflicts subsided as most of the elephants moved to Samburu Game Park.
- Cattle body condition was fair and improving, though the milking herds were still poor in the pastoral areas and the marginal agriculture areas. Cattle increased in the markets and the prices started picking up. However, the general population of cattle was seriously reduced by the drought.
- Livestock production did not improve the food security situation as big number of families lost their animals to the drought that went on for the last three years and there has been no calving. Retail shops were actually selling parked milk from Uganda.
- The nutrition status of children below five years worsened, with the percentage of those rated at risk of malnutrition rising to 14% from the previous month's 11.
- As the pastures improve chances of conflicts are evident as pastoralists usually start cattle rustling with an aim to restock.

### **Recommendation to DSG and KFSM**

- Supplementary feeding for children under five in all the districts as the entire district is still food insecure.
- Support the secondary school with bursary as the poverty level is very high following the drought.
- Security alert as cattle rustling are usually about to start during this time of stress.
- Peace building efforts to start between the pastoralist in laikipia north Samburu and Baringo districts.
- Avail urgent relief food as the EMOP did not distribute for the last four month.
- Plans to restock the pastoralists should be taken into consideration as majority of the pastoralists lost their animals.
- Ministry of education to consider supporting the poor parents who have been affected by the drought impact with school bursaries.
- Peace building activities to start as the pastoralist are now back to their respective homes areas and cattle rustling are about to start.

## 1.0 Environmental indicators (stability)

### 1.1. Rainfall



Rainfall data provided by (Ewaso Nyiro River Catchment Authority) from Matanya station in Lamuria division this data does not cover the entire district Matanya is an Agropastoralists zone but the situation is different in the rest of the livelihood zones.

- The rains resumed in December, rekindling the farmer's hopes for crops and pastures as November was a disappointment.
- The rains were heavy in Rumuruti, causing damage to property the Lorian swamp in Rumuruti broke its banks and destroyed houses in Rumuruti also resulting to the death of one child.

### 1.2. Condition of natural vegetation and pasture

Pasture improved, enabling cattle to access enough fodder. In Mukogodo the livestock started showing signs of improvement but they were still very weak.

### 1.3 Water sources and availability

The distance to water improved significantly following the rains received.

## 2.0 Rural economy indicators (food availability)

### 2.1 Livestock production

- Cattle body condition was fair though the milking herds were still poor in the pastoral areas and the marginal agriculture areas. The livestock production has not improved the

food security situation and a big number of families lost their animals to the drought that went on for the last three years and thus they have not started calving.

- Cattle numbers were increasing in the markets and the prices were slightly picking up. However, the general population of cattle was seriously reduced by the droughts.

### **2.1.1 Livestock body condition**

The general body condition of livestock all species improved owing this to the improved pastures in the fields. However, the general number of livestock has been reduced by the drought the few that remained are still to calve.

### **2.1.2 Livestock diseases**

So far no major diseases outbreak has been reported.

## **2.2 Crop production**

### **2.2.1 Timeliness and status of various crop production activities**

- Crops are improving though they were affected by the failure of the rains in November. Hopes for harvest of beans are high though the maize that was affected might survive if the rains continue properly in January in the Laikipia central and Laikipia east.
- Maize was knee high though it was affected by the rains that stopped to continue in November but started to improve with the rains continuing. Harvested by March.
- Beans were also affected because the rains stopped when they were flowering in the Laikipia west and Laikipia east. But the few that survived might be harvested in February.
- In Ngarua and Nyahururu, the high potential areas, the rains were not as good as in the Laikipia east but farmers who usually plant only during the long rains (March to June) planted quick maturing crops as they had a total crop failure during the last season. They might harvest in March if the rains continue in January.
- Human/wildlife conflicts slightly subsided as most of the elephants moved to Samburu Game Park.

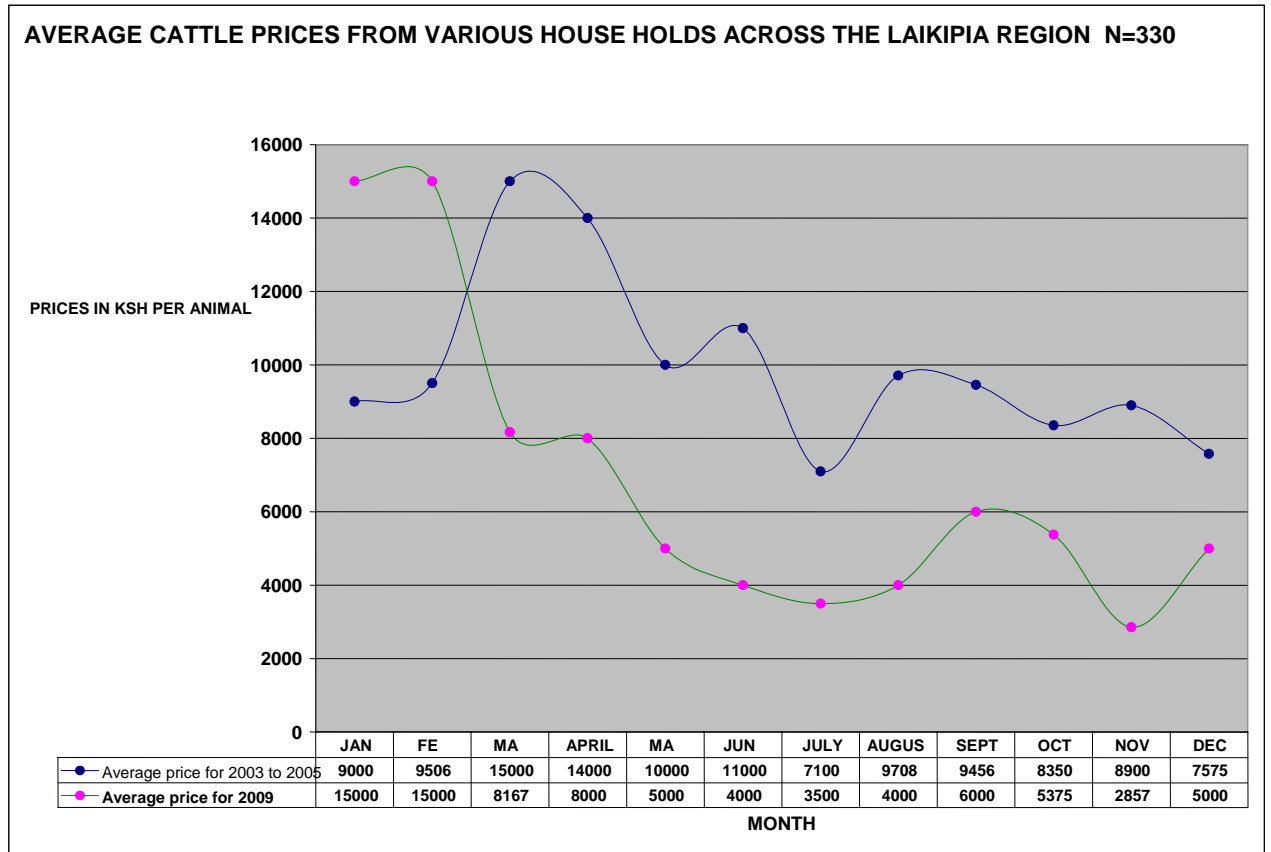
### **2.2.2 Harvests**

The earliest expected harvest will be for beans in February. Maize might be ready in March if the rains continue as expected.

## **2.3 Implications on food security**

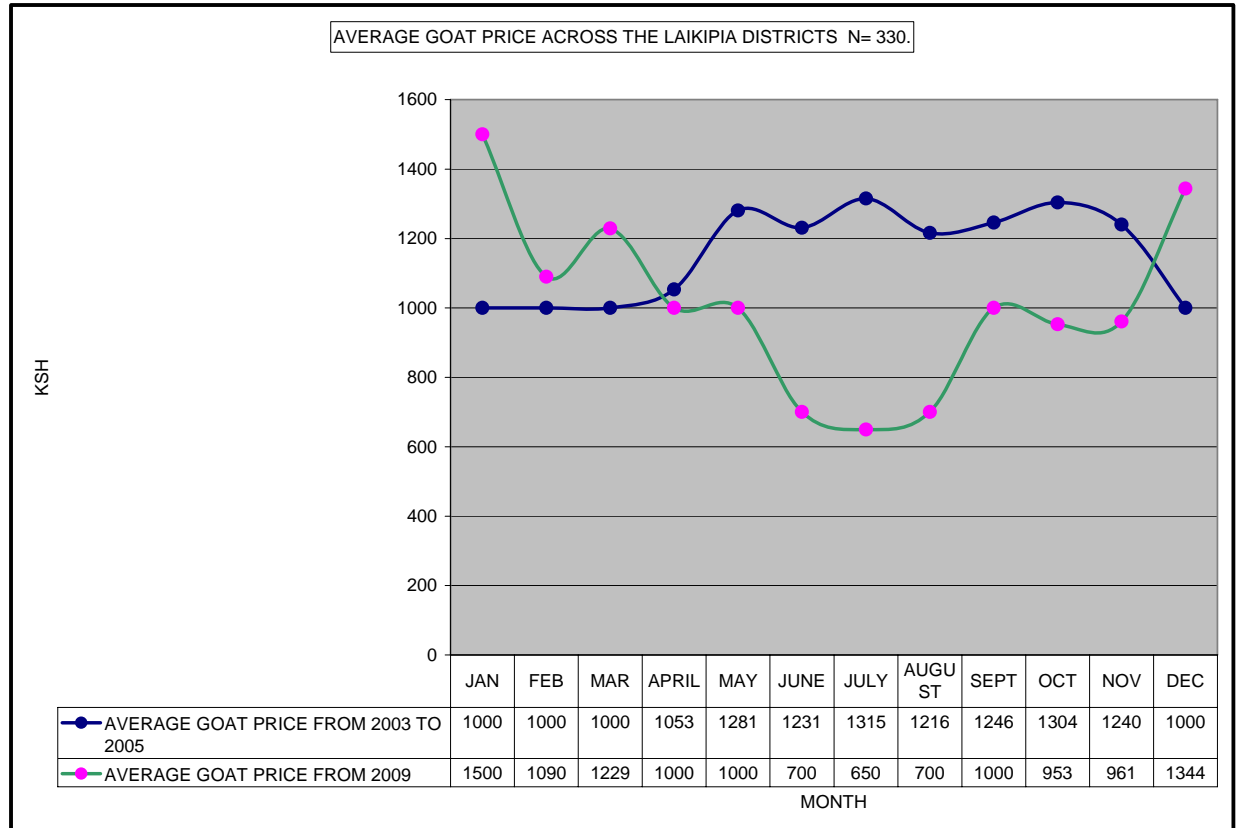
At the moment the entire district is food insecure as the crops planted might not yield much. Expectations of the rains were too high compared to the real situation.

3.0 Access to food  
 3.1 Livestock marketing  
 3.1.1 Cattle prices



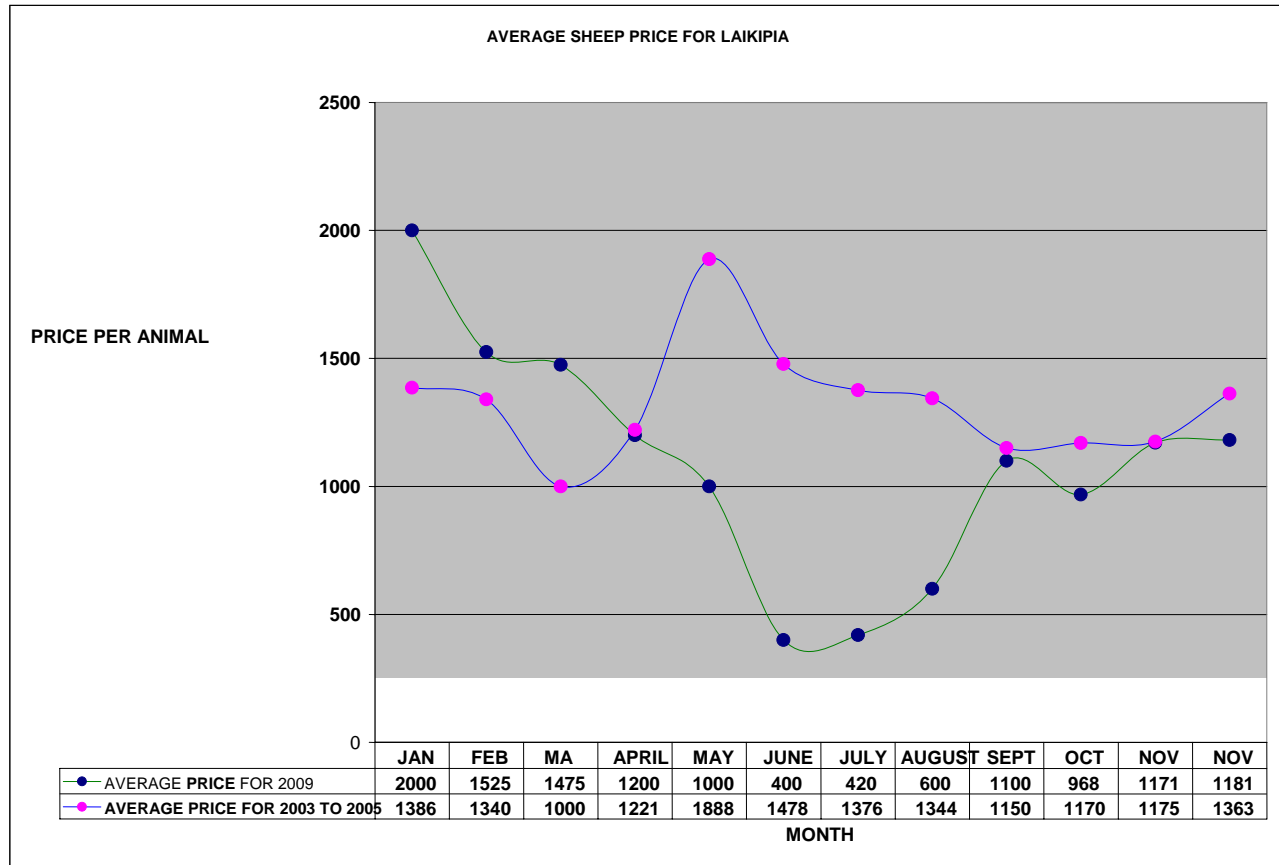
Livestock prices started improving due to the fact that their body condition is improving. Farmers were not willing to sell their cattle due to the fact they intend to fatten them with the ongoing rains. The average cattle price was Ksh5000 compared to Ksh2857 in November.

### 3.1.2 Goat prices



The body condition of shoats improved significantly due to the good pastures. The prices of shoats were boosted by the demand for the holidays. The average price of goats was Ksh1344 compared to Ksh961 in November.

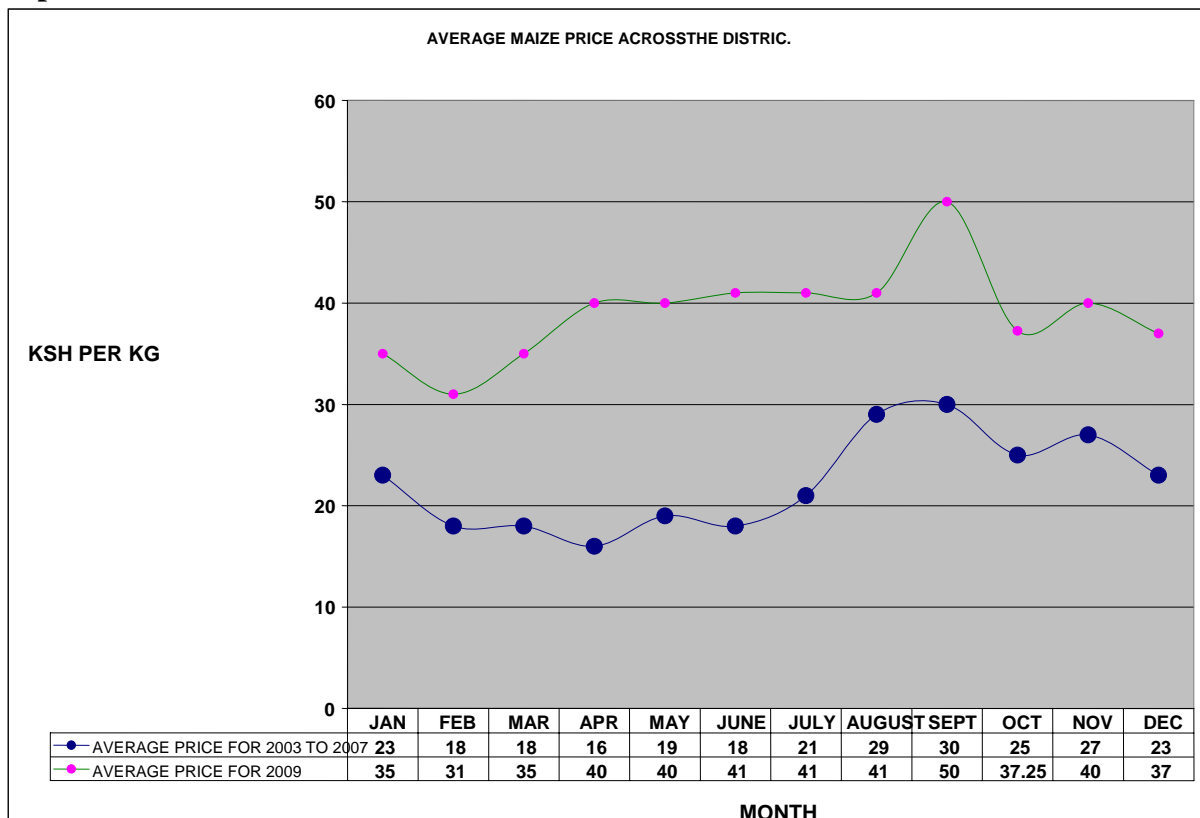
### 3.1.3 Sheep prices



Average sheep price was Ksh1363 compared to 1176 in November. The prices of shoats were boosted by the demand for the holidays.

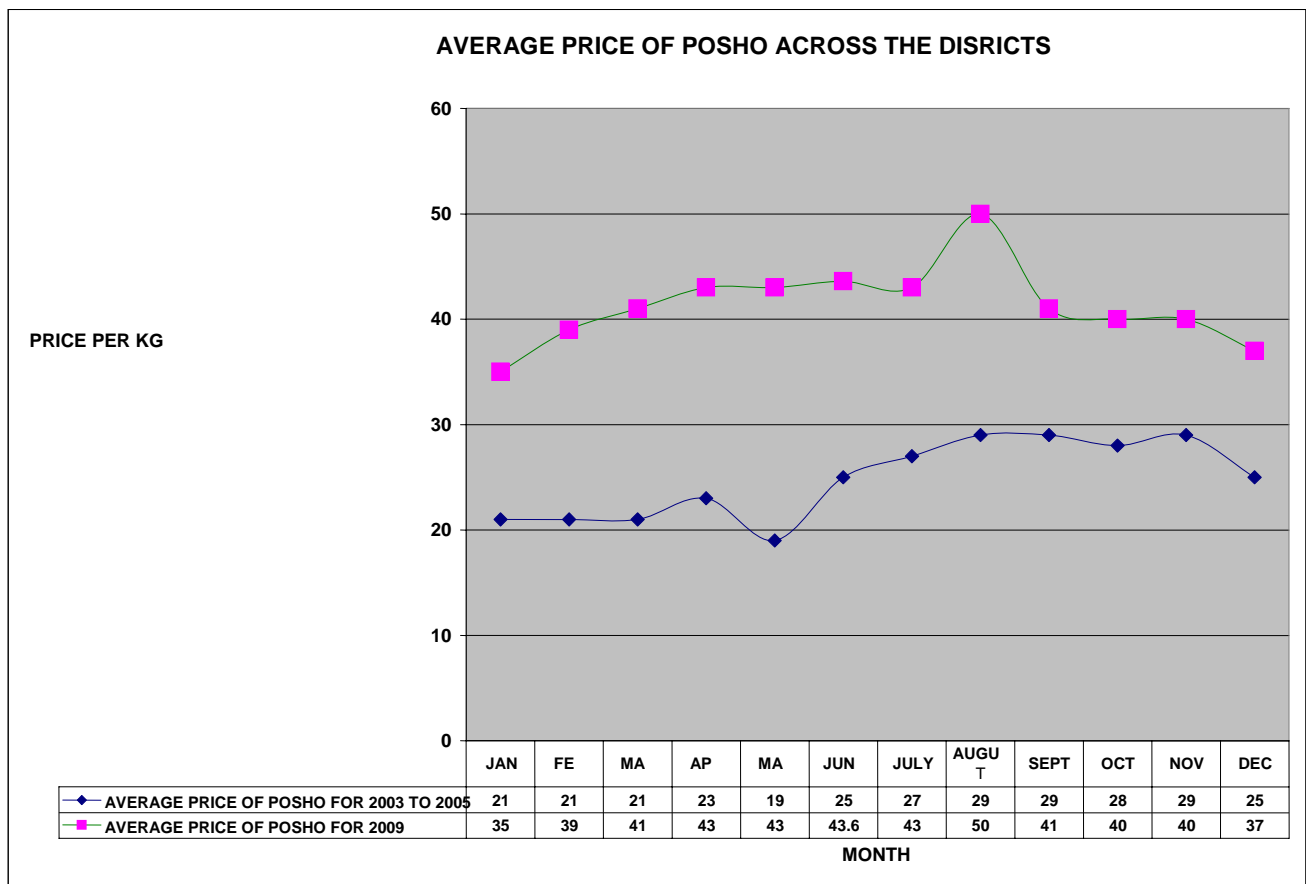
### 3.2 Food prices

#### 3.2.1 Maize prices



Maize prices dropped slightly following the importation of the commodity from Nakuru. The average price was Ksh 37 compared to Ksh40 in November. The prices of maize and posho are expected to drop further in March if harvest of the quick maturing variety of maize is realised.

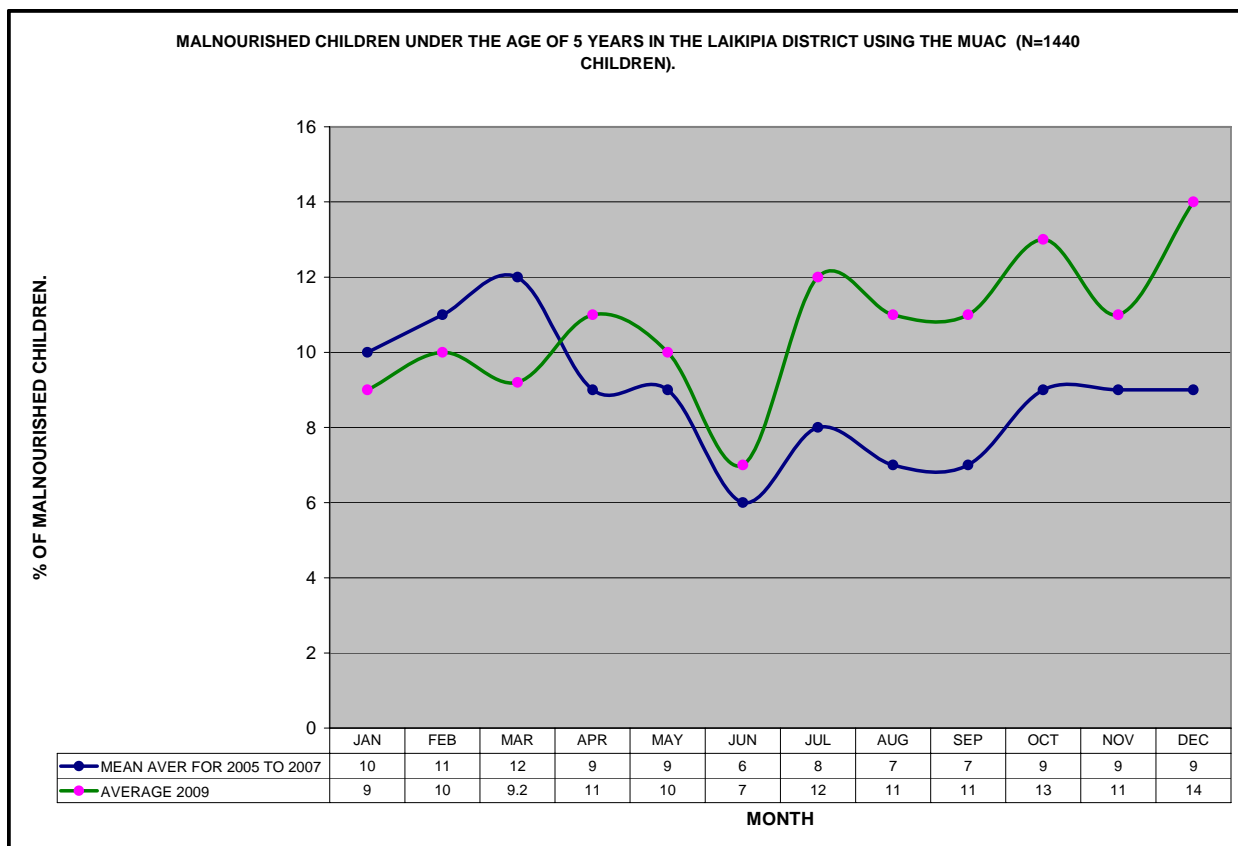
### 3.2.2 Posho prices



Just like maize, posho prices improved. The average price was Ksh 37 per kilo compared to Ksh40 in November.

## 4.0 Human welfare indicators

### 4.1 Nutrition status



The nutrition status of children below five years worsened.

The percentage of those rated at risk of malnutrition rising to 14% from the previous month's 11.

## 5.0 Current interventions

### 5.1 Food aid

The EMOP stopped distributing food in the month of October and November due to the fact that there was no food in the stores and the WFP had no supplies.

### 1.4 Emerging issues

#### 1.4.1 Insecurity / human wildlife conflict.

Buffaloes, which were previously in conservancies, were wreaking havoc in Mukogodo, Rumuruti and central division.

### 5.2 Coping strategies

- Sale of charcoal

## 6.0 Recommendation to DSG and KFSM

- Supplementary feeding for children under five years in all the districts as the entire district was still food insecure.
- Support the secondary school with bursary as the poverty level is very high following the drought.
- Security alert as cattle rustling are usually about to start during this time of stress.
- Peace building efforts to start between the pastoralist in laikipia north Samburu and Baringo districts.