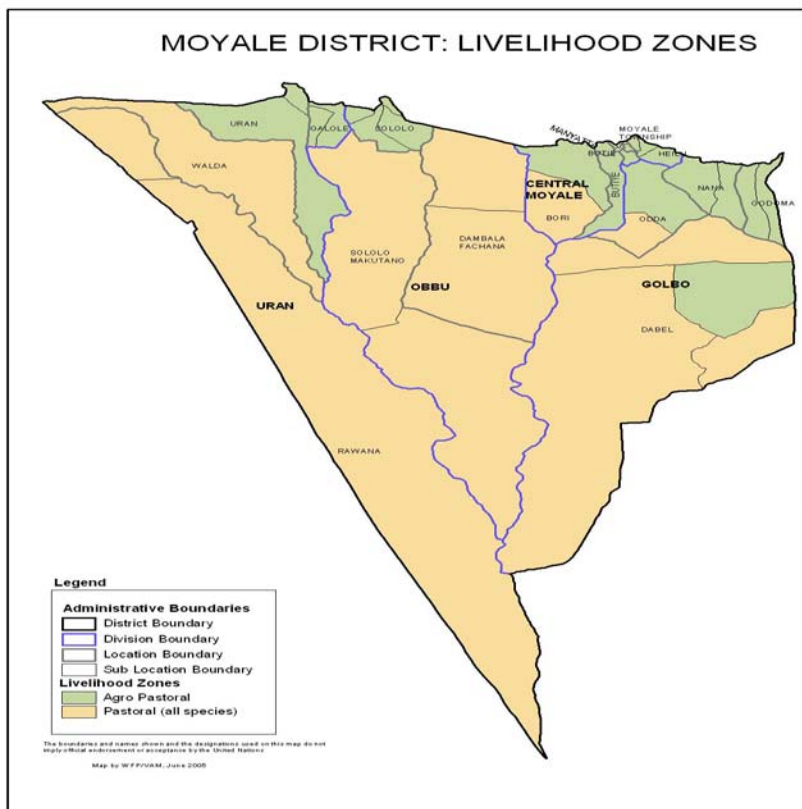




**OFFICE OF THE PRIME MINISTER
MINISTRY OF STATE FOR THE DEVELOPMENT OF NORTHERN KENYA AND OTHER ARID LANDS
ARID LANDS RESOURCE MANAGEMENT PROJECT II**

DROUGHT MONITORING BULLETIN, DECEMBER 2009

Moyale District



Warning Stages

Livelihood Zones	Stage	Trend
Pastoral Zones	Alarm	Slightly Improving
Agro-Pastoral Zones	Alarm	Slightly Improving
Casual Labour, Small Businesses	Alarm	Slightly Improving
District	Alarm	Slightly Improving

Seasonal calendar



Situation overview

- The district recorded some rainfall late in the month though distribution was not consistent. An average of 18.5mm was recorded and this was far below normal despite prediction of el nino rains earlier in the season.
- Vegetation, which had improved with the onset of rainfall, wilted with the hot weather experienced in late November and December.
- Water availability improved for both animals and humans. The lowland areas received most of the runoff and all ephemera ponds filled up. However, the border escarpment of Moyale might soon be affected by water shortage as the rains eluded the region.
- Livestock mortality was quite high in sheep and goats, especially in Obbu Division. The mortality rate was 4.2% for sheep and 3.9% for goats.
- Prices of livestock improved with cattle trading at an average price of Ksh7,166.70, goats Ksh1,598.90 and sheep Ksh1,533.30.

Current interventions

Non-food interventions

Non-non food items were provided over the month.

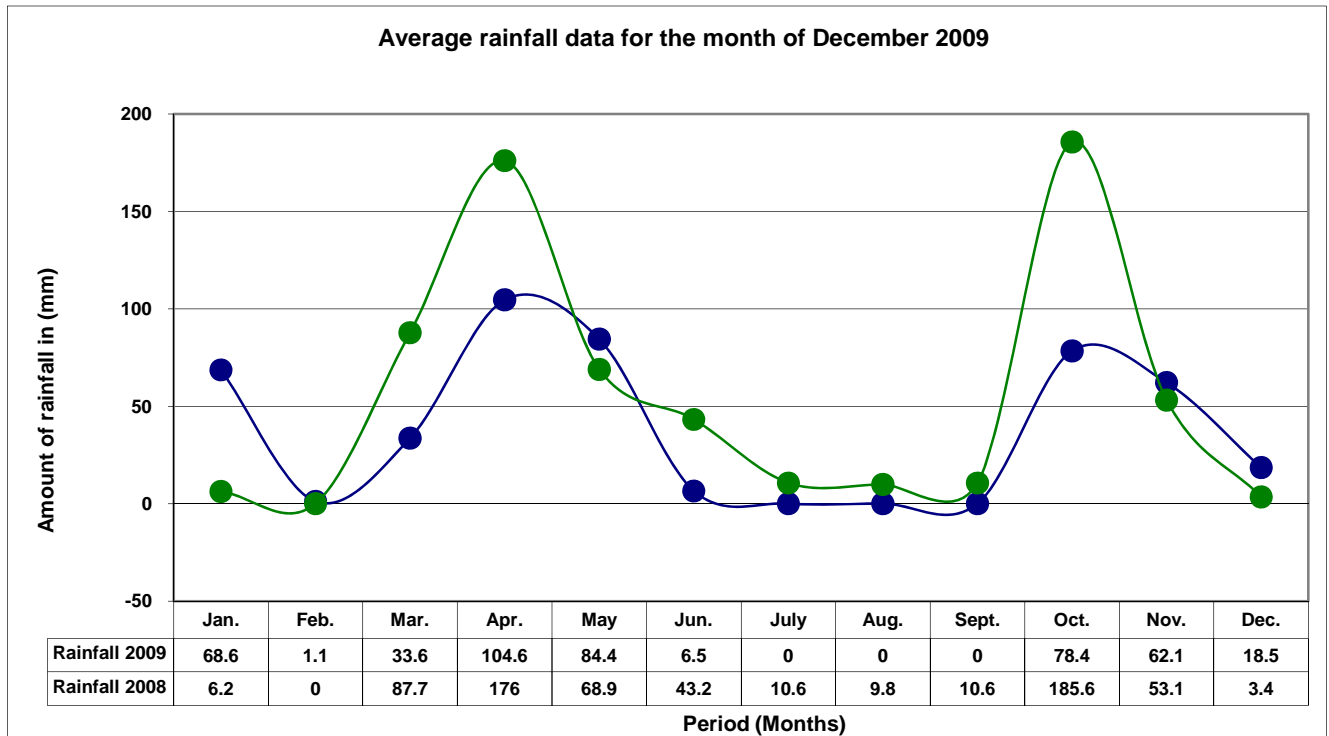
Food aid

A few centres reported to have received relief food and some supplements.

1.0 Environmental indicators (Stability)

1.1 Rainfall

Rainfall data as at 31st December 2009



- The district recorded some rainfall late in the month though distribution was not consistent. An average of 18.5mm was recorded and this was far below normal despite prediction of el nino rains earlier in the season.
- Most parts of Central Division received no rains but the rest of the district received fairly high rains within the last week of the month. The amount received in Obbu and other lowlands areas was very high.

1.2 Condition of natural vegetation and pasture

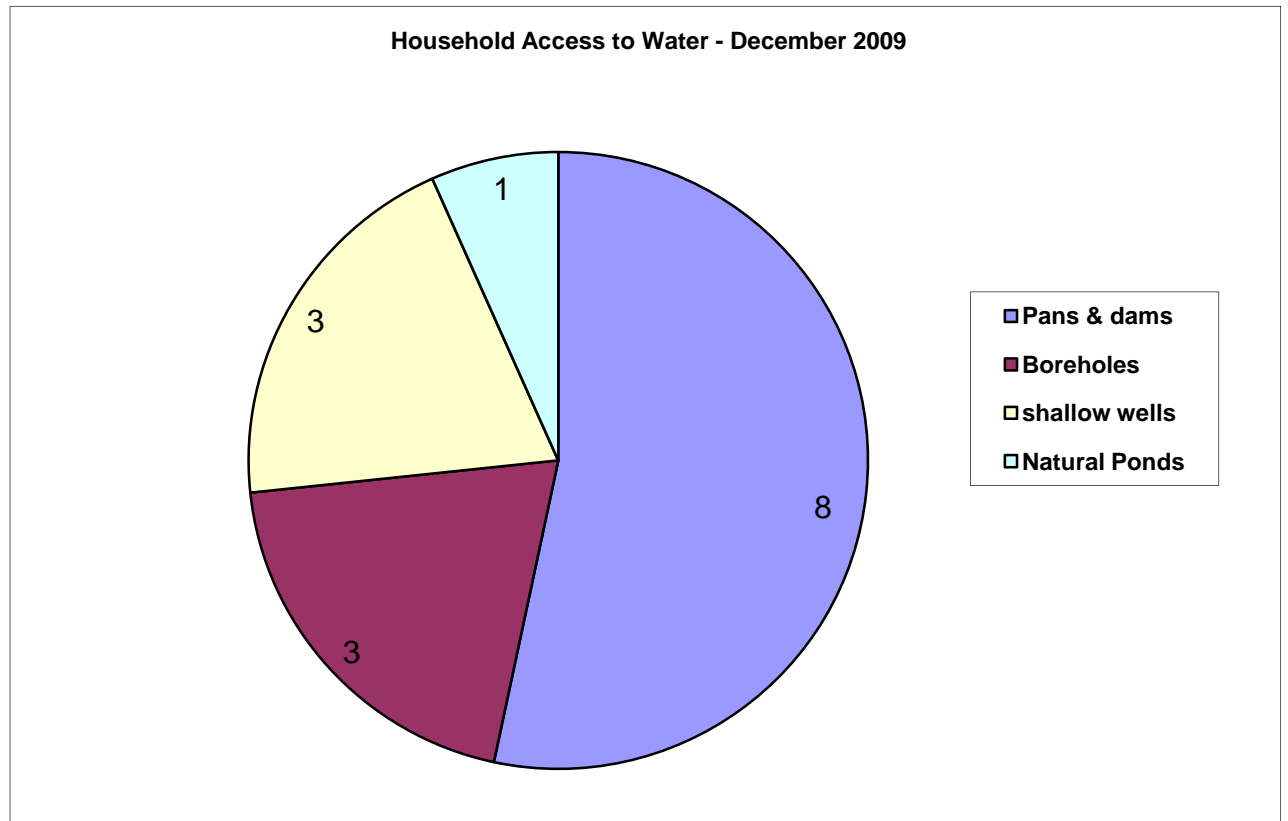
- As the rains resumed, forage improved in the lowlands especially in most parts of Obbu, Golbo and Uran Divisions. Central Division did not receive much rainfall and vegetation wilted.
- Forage quality improved, with green and lush ephemeras, which built up more nutritive value while the biomass increased substantially as rains resumed.

1.2.1 Distances to grazing areas

- Average distance to pasture increased slightly to 12.1Km up from 11.8Km in November. The trend was within the normal grazing distance for nomadic pastoralists.

1.3 Water sources and availability

1.3.1 Household access to water



Most of the sample used pans and dams as the main water sources during the month, while the rest relied on boreholes and shallow wells.

1.4 Emerging issues

1.4.1 Cases of diarrhoea

Some of the sample areas reported cases of diarrhoea and malaria due to stagnant water around settlements. The situation was mostly in areas where torrential rains caused flooding, particularly in Obbu and Golbo.

1.4.2 Chronic food shortage

Food prices were quite high and not accessible to poor households. The situation affected almost 70% of the district as relief food slowly decreased over the last two months.

1.4.3 Partial wilting of planted crops

Temporal distribution of rainfall affected crops as the rains started within the second decade of October and ceased after three weeks. A dry spell followed for more than five weeks and heat stress affected the young crops.

2.0 Rural economy indicators (Food availability)

2.1 Livestock production

2.1.1 Livestock body condition

Condition of all species of livestock improved but goats were affected by torrential rains in Golbo and Obbu and some died.

2.1.2 Livestock health

There were some deaths in sheep and goats caused by suspected pneumonia due to cold and rainy weather situation in Obbu and Golbo Divisions.

2.1.3 Milk production

Average milk price was Ksh27.30 per bottle, which was a decrease due to improved supply.

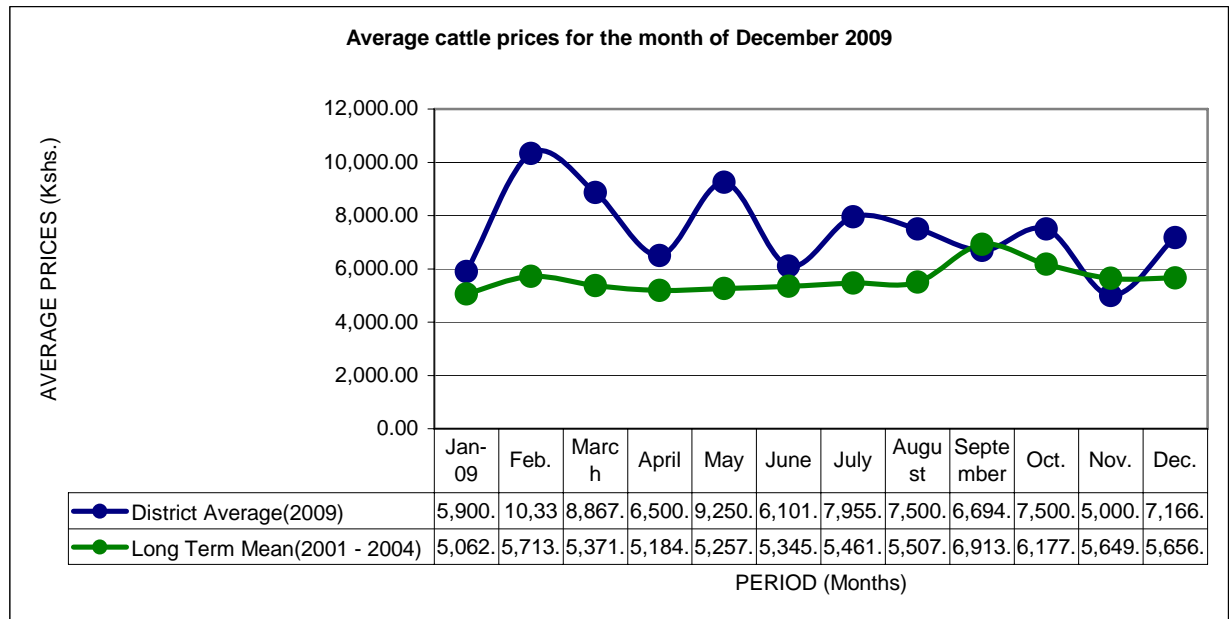
2.1.4 Crop production

Most of the planted crops wilted due to extended lengthy dry spell of November and December. The surviving ones are at mature but green stage. Some average harvested might be achieved in silt valleys of Mansille and Upper areas of Moyale and Uran.

3.0 Access to food

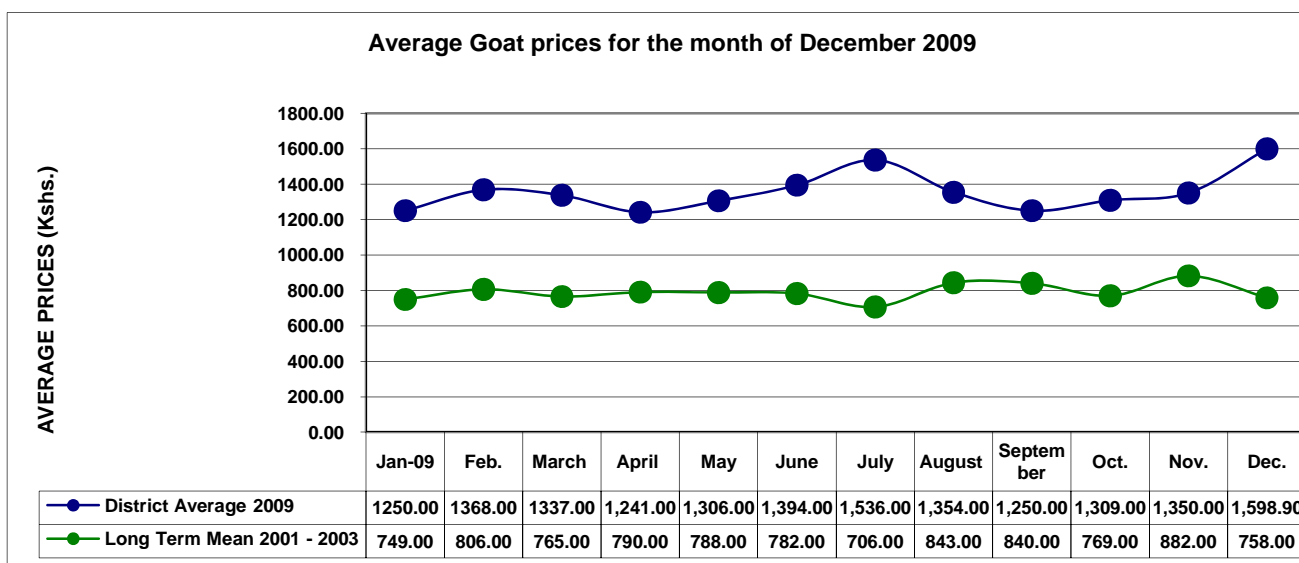
3.1 Livestock marketing

3.1.1 Cattle prices



Cattle prices improved during the month as body condition improved. Prices at terminal markets were also high for slaughter animals. The average price was Ksh7,166 compared to Ksh5,000 in November.

3.1.2 Goat prices



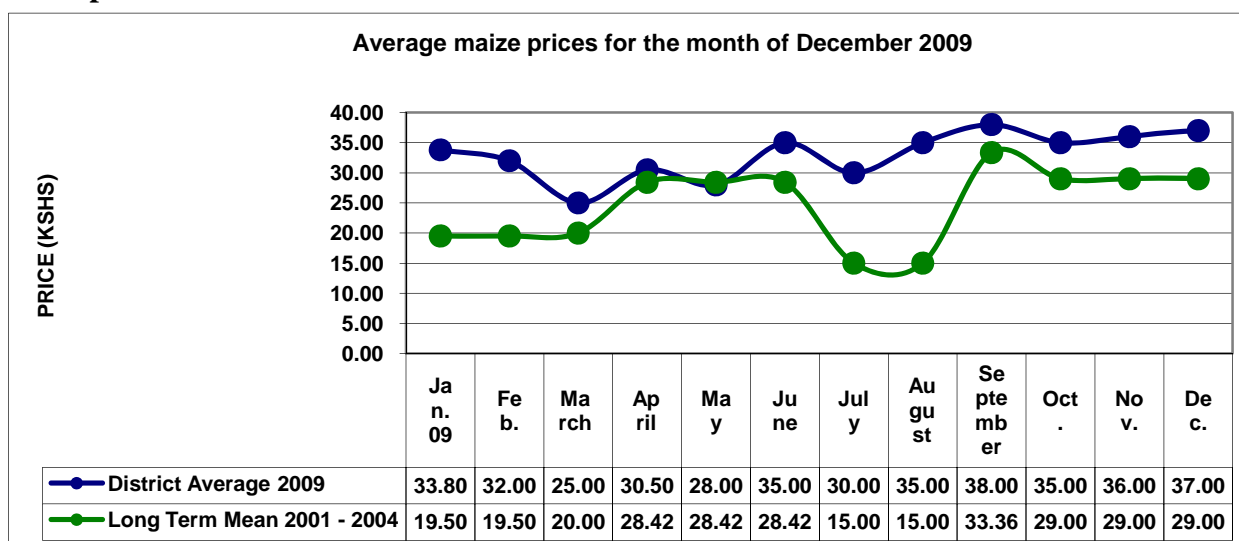
Prices of goats went up when compared to November. The average price was Ksh1,598, up from Ksh1,350. The increase was as a result of better body conditions and good terminal prices.

3.1.3 Camel prices

The prices of slaughter camels are very high. A mature bull can cost over Kshs50,000. This price depends on some external factors like importers from Arabian peninsula and border exchange rates.

3.2 Food prices

3.2.1 Maize prices

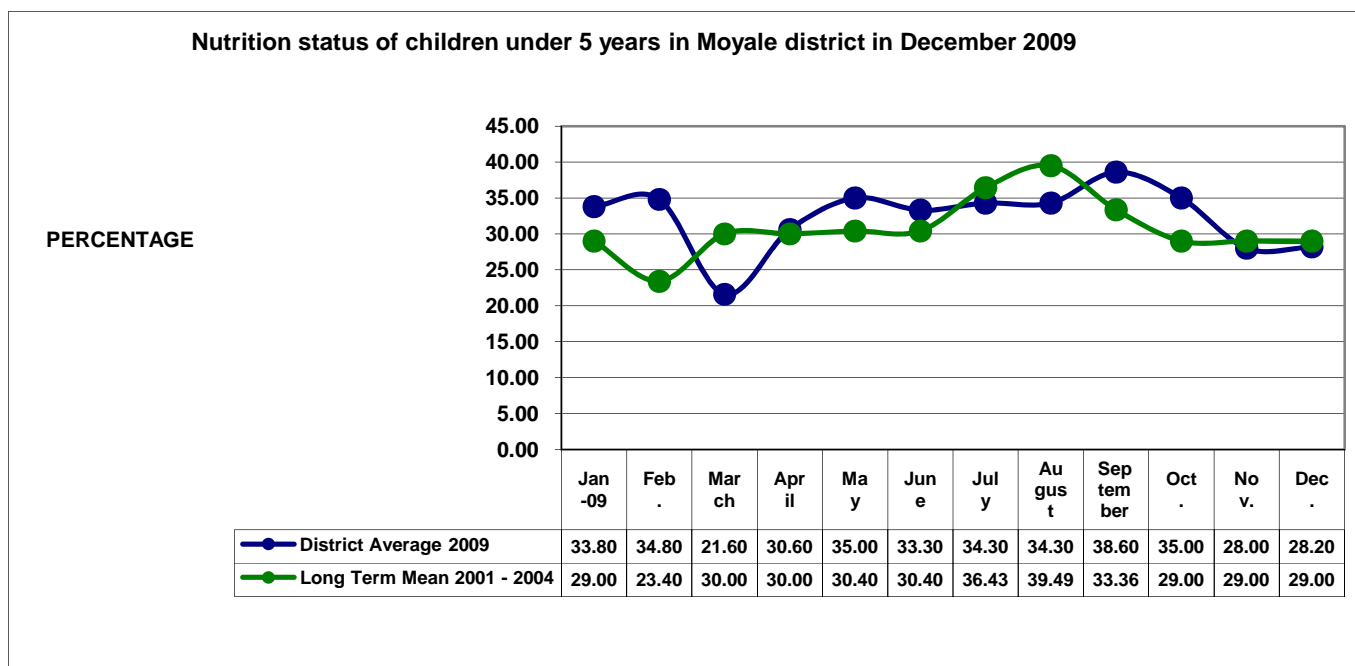


Maize prices increased slightly over the month due to shortage of the commodity and lack of relief food. The average price was Ksh37, up from Ksh36 in November.

The main reason is non-availability and lack of relief food.

4.0 Human welfare indicators (Utilisation of food)

4.1 Nutrition status



The nutrition status of children below five years was stable compared to the previous month. The main reason was availability of milk at household levels and provision of energy food at health centres and dispensaries.

4.2 Human health

There were several cases of diarrhoea and coughs associated with the rains reported from our sample areas.

4.3 Flagged areas

Areas affected by high malnutrition levels and livestock deaths are Mado Adhi in Obbu Division. Sololo Makutano sample area has also reported some drastic coping mechanism like begging along the high ways and with drawing children from school.

4.0 Current interventions

- Relief foods were distributed to several centres in the district. Only few centres benefited from food supplements to children under five years.
- Vaccination against pleuropneumonia is currently underway.

5.1 Coping strategies

- Some of the herds which were in the district and some that came back were moved into the wet-season grazing areas by the Deedha elders in order to preserve the dry season zones.
- Engaging in petty trade.
- Undertaking casual jobs.

6.0 Recommendations to DSG and KFSM

- More relief food is required and distribution should include more people.
- Food supplements should be increased to reverse the worsening malnutrition status.
- The communities in the region, especially those in agro-pastoral area require much capacity building in matter of natural resource and environmental protection to improve their resource base.
- Catchments destruction is rampant and needs to be discouraged as several streams and aquifers are getting dry.
- There is need to have contingency for expected long dry period between December and April 2010.