

Situation overview

- The district recorded 53.02mm of rainfall, lower than 58.65mm during the previous month. The trend was downward and unexpected for such a time of the year.
- Pasture quantity and quality was poor and on a downward trend.
- Livestock body condition was poor and deteriorating. Fewer people sold their animals, so the prices increased slightly.
- Maize was at various stages of development, from weeding to tussling and was affected by poor rains. Maize prices were increasing as well as beans prices.
- The nutrition status of children under five deteriorated during the month, with the percentage of those rated at risk of malnutrition rising slightly from 4.5 in November to 4.6. This was attributed to drought and milk reduction at household level.
- Milk production dropped and it was only available for children, but less than the previous month.

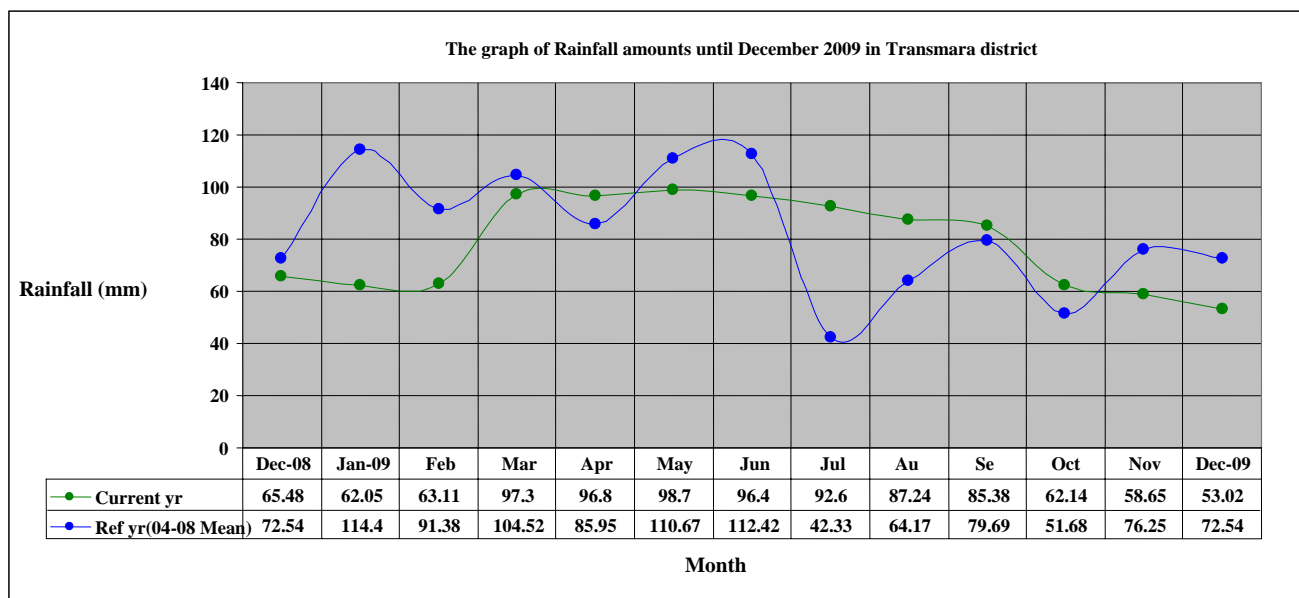
Recommendations to DSG and KFSM

- Water storage facilities need to be established and improved as heavy rains are expected in the near future. *Action: Water & ALRMP II.*
- There is need to improve poor roads condition, as well as security access bridges and drifts in conflict areas. *Action: Public Works, ALRMP II & CDF.*
- Peace building meetings should be continuous in order to establish lasting solutions to conflicts in the districts.

1.0 Environmental indicators (Stability)

1.1 Rainfall

Rainfall data from Kilgoris rainfall station



- The rainfall received was 53.02mm, a decrease compared to 58.65mm during the previous month. The trend was downward and unexpected for such a time of the year. The rainfall amount was also lower than normal for such a month of the year.
- Onset – Rains set on normally as expected, but less with intensity. The district had about 4 rainy days averagely, same as previous months.
- Mixed farming livelihoods maintained 20% rainfall coverage, same as last month.
- Pastoral, Agro-pastoral and Casual waged labour/ tourism livelihoods received an average of about 10% coverage, similar to the previous months.
- This distribution was below normal for such a time of the year, where it is usually expected that a greater percentage of the district receives rainfall during short rains.

1.2 Condition of natural vegetation and pasture

- The quality of vegetation/pasture was fair and deteriorating. The quality of the vegetation status in the pastoral livelihood zones was lower compared to that of the previous months. The quantity of pasture was low and decreasing compared to the previous month. This was less than that of the same month for a normal year.
- The vegetation quantity in Mixed farming livelihood zones was better than that of other livelihoods.

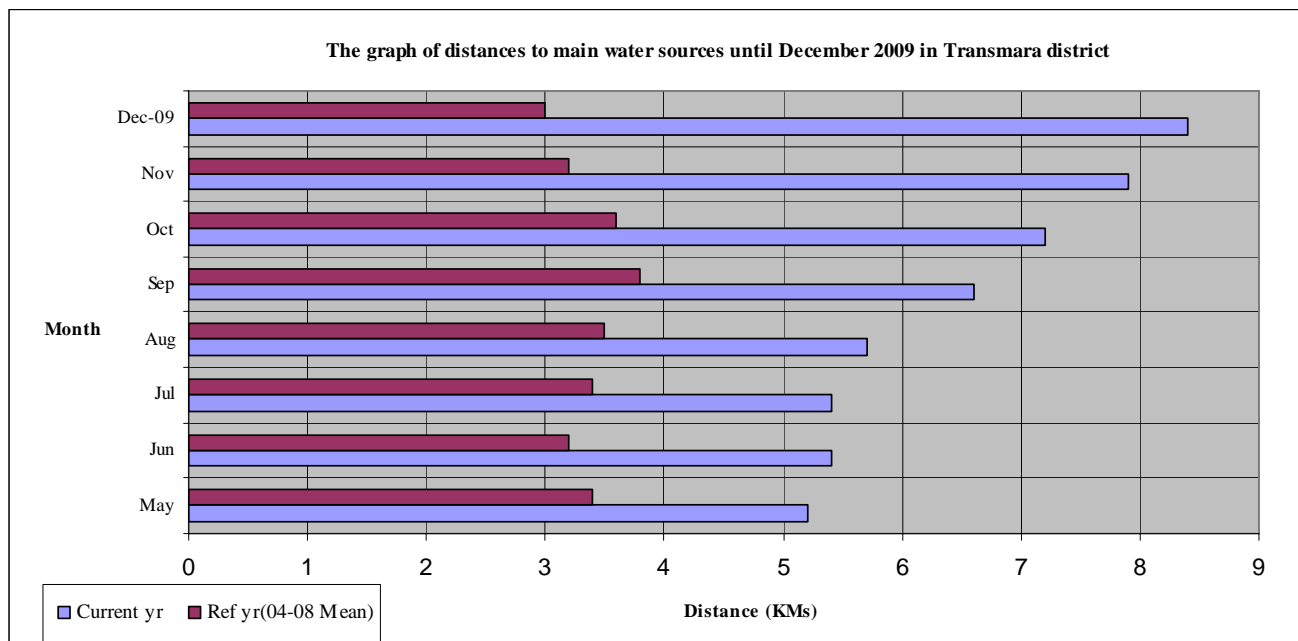
1.3 Distance to grazing areas

The average distance from livestock concentration points to main grazing areas in the district was 7Kms, an increase from 6.2Kms for last month. This is above normal (3.38kms) and is attributed to persistently low rains in the area. The situation is similar to the previous months and is worsening with time.

1.3 Water sources and availability

Permanent rivers, pans and dams were main sources of water during the month. There was pressure at water points. Other sources had dried up due to low rainfall amounts received over an extended period of time. The water situation was worse in all livelihoods. The situation has persisted for long.

1.3.1 Household and livestock access to water



The average distance (in kms) to main water sources (range) was between 8 and 9, more than for last month which ranged between 7 and 8. The trend was upward due to the drought situation. This distance was higher compared to that of the same month (3) for the long term average for such a time of the year.

1.4 Emerging issues

1.4.1 Insecurity/conflict/human displacement

Incidences of insecurity during the month were low. The District Peace Committee meetings were ongoing and solutions to some conflicts were being sought.

1.5 Implications on food security

The low and decreasing rainfall amount reduced water and pasture availability. Milk was less available. Households were being affected by decreased milk levels.

2.0 Rural indicators (Food availability)

2.1 Livestock production

2.1.1 Livestock body condition

- The body condition of cattle, sheep and goats was poor and deteriorating. The situation was similar to that of the previous months. The condition of livestock in pastoral zones was worse than the rest.

2.1.2 Livestock diseases

There were insignificant cases of livestock diseases outbreak in the district.

2.1.3 Milk production

- The average milk production per household was low and less than the previous month. This was because of the low amounts of water and pasture. Livestock moved for long distances in search of water.
- The quantity of milk production was less than normal for such a time of the year. Mixed farming livelihoods had higher milk production per animal than pastoral areas.

2.2 Crop production

2.2.1 Timeliness and condition of various crop production activities

Maize was mostly at weeding stage although several stages prevailed, from weeding to tussling. Stability of its condition was not good as rains were limiting at some point.

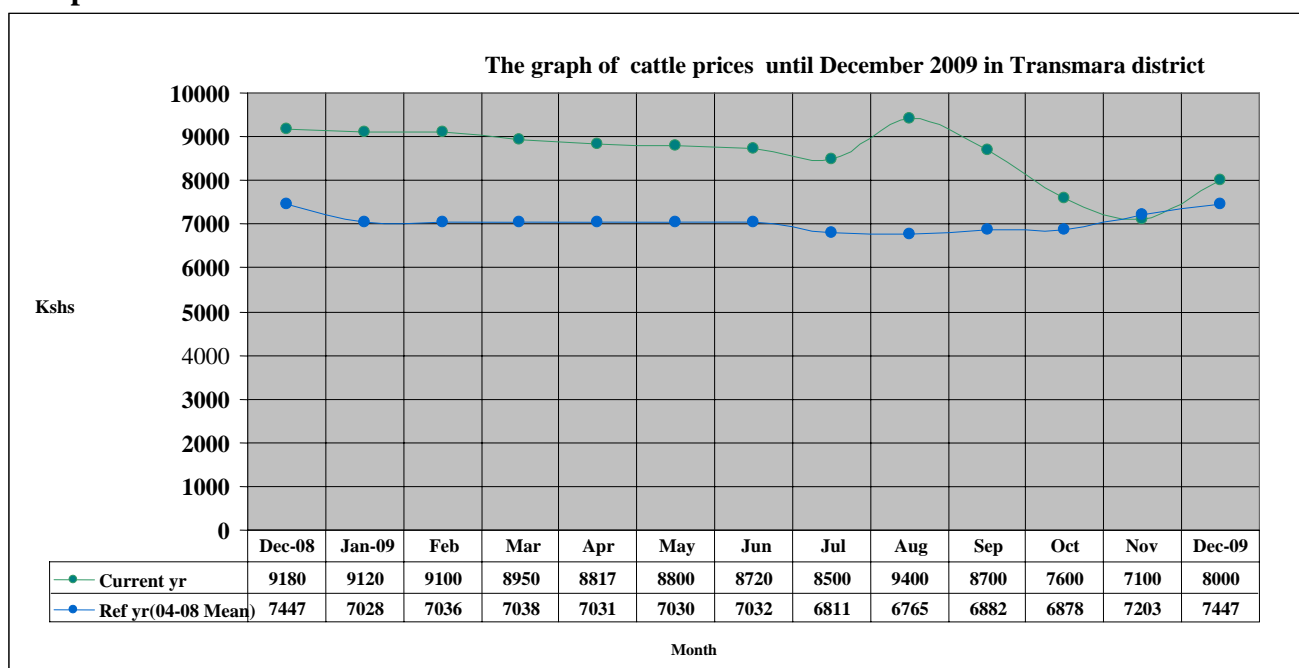
2.2.2 Implications on food security

Food security is threatened since maize harvests were poor yet the rainfall amounts were below the minimum required for the crops in the farm.

3.0 Access to food

3.1 Livestock marketing

3.1.1 Cattle prices

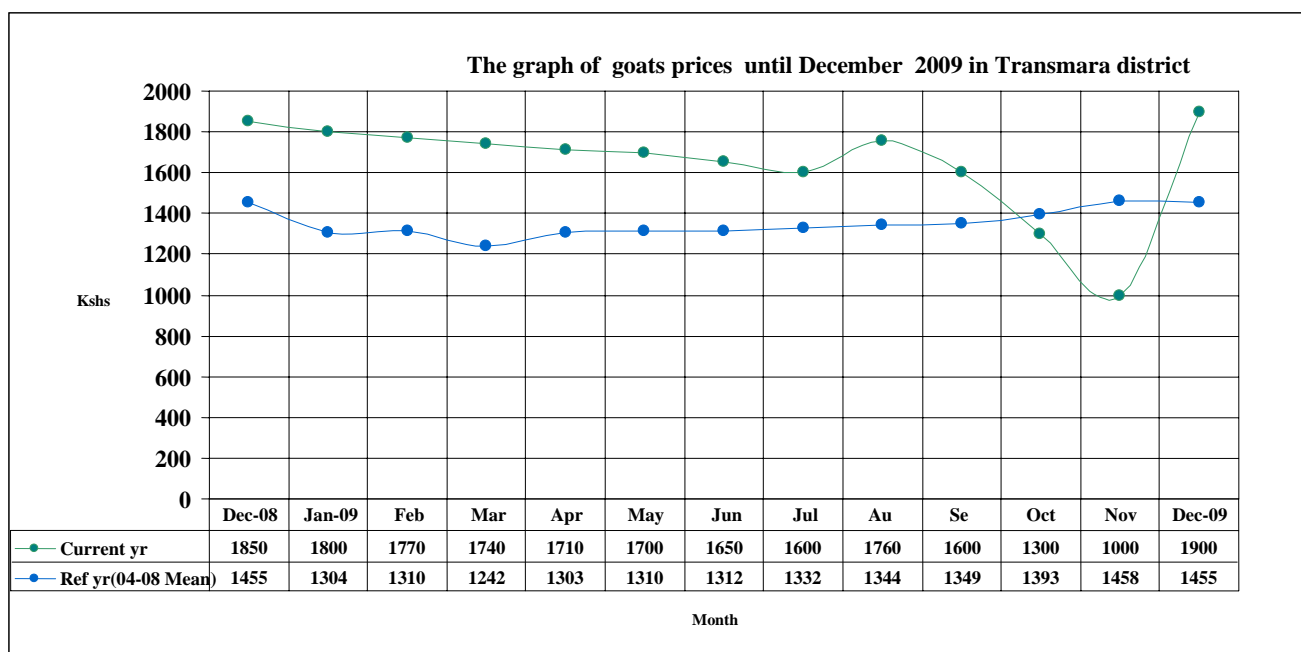


n=330

- The average price for cattle was Ksh8,000, compared to Ksh7,100 for the previous month. Cattle prices increased this month. The increase was because of the reduced number of people selling cattle, since it was a festive period and most households were in celebrations and trade was low.
- The average cattle prices were higher than normal for such a time of the year. Implications on food security: This was positive to food security as more cash was

fetched from cattle sales than before. Cattle income, which is majorly depended upon for food purchase was better.

3.1.2 Goat prices



n=330

The average price of a goat decreased from Ksh1,000 to Ksh1,900. This was because of the high demand for goats for slaughter during the festive season. The price of goats was higher than normal (Ksh1,455) for such a time of the year.

3.2 Milk Consumption

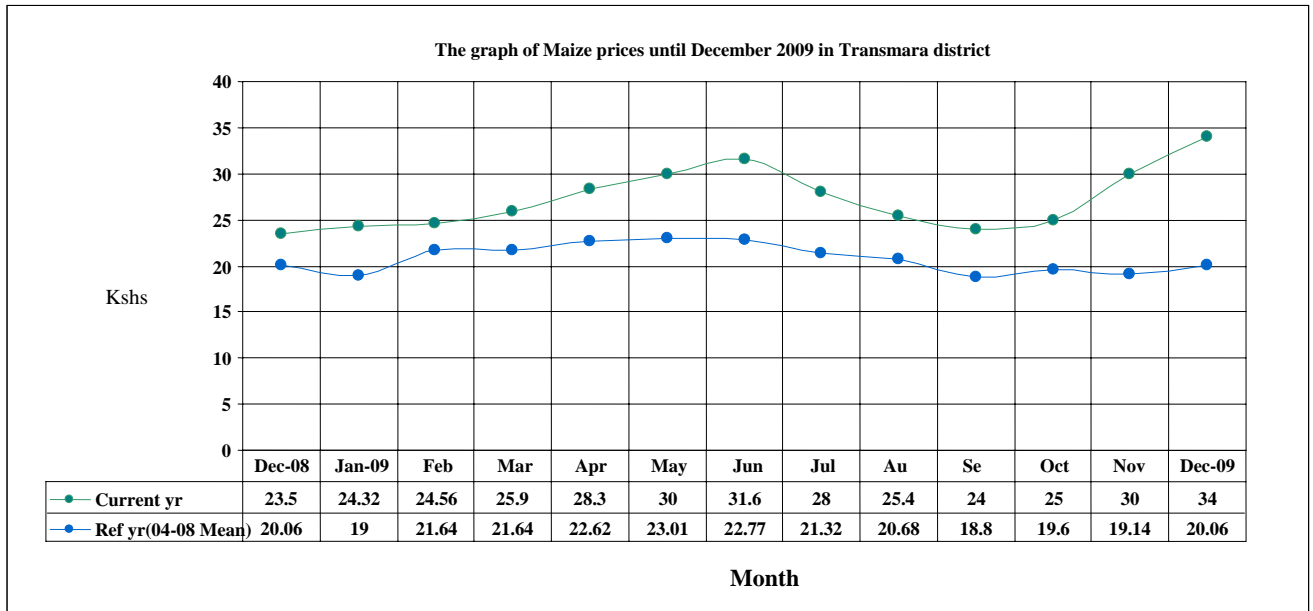
Table for milk consumption

	2008 Dec	2009 Jan	Feb	Mar	Apr	May	Jun	Jul	Aug	Sep	Oct	Nov	2009 Dec
Everyone	18.11	18.05	18.01	17.94	17.60	17.48	17.20	17.20	17.08	16.00	14.00	13.01	11.00
Only children	36.52	36.83	36.92	36.97	37.20	37.50	37.80	37.83	37.96	40.00	42.00	44.20	45.50
None	4.43	4.55	4.61	4.68	4.88	5.20	5.44	5.43	5.52	6.50	7.50	8.25	8.87

Milk availability decreased. This affected accessibility of household members to milk. The trend of milk consumption-pattern was downward; similar to previous months. This situation is negative to food security. All was attributed to the drought situation that has led to significant reduction in water and pasture.

3.3 Crop prices

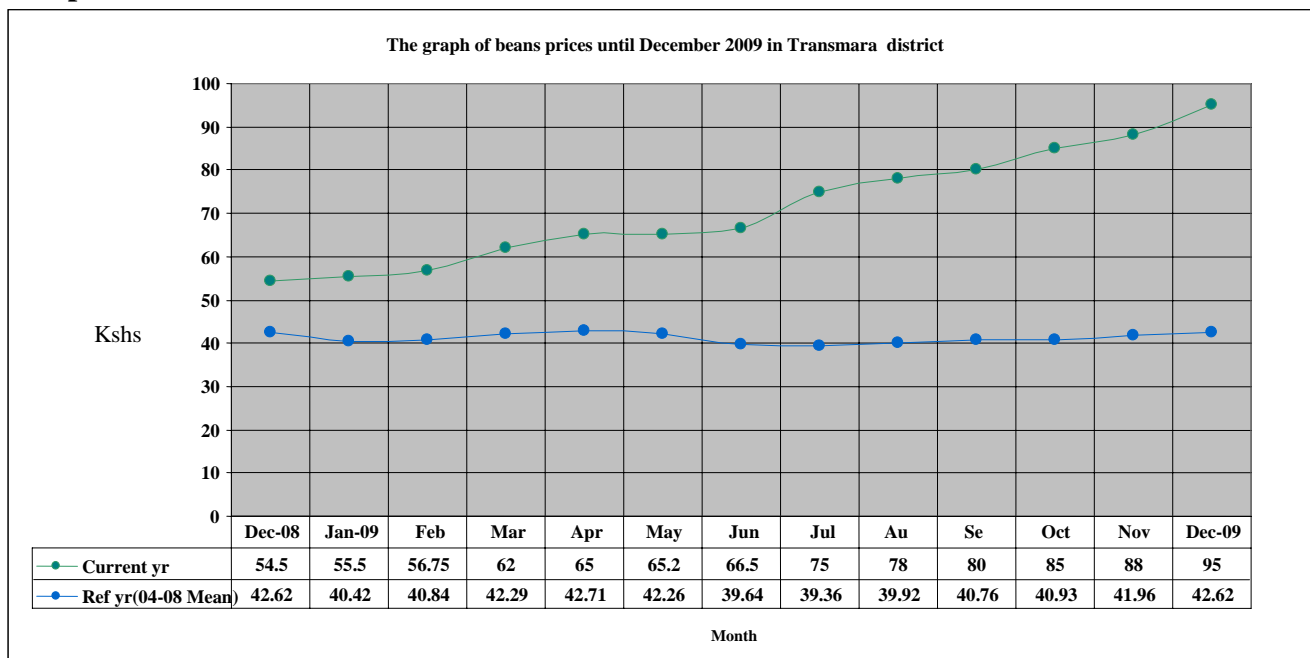
3.3.1 Maize prices



n=330

The average price of maize increased from Ksh30 to Ksh34. Prices increased because of the high rate of cereal demand, the trend is expected to continue since maize is becoming scarce with time, following poor harvests during the year. The price was above that of the long term mean for the month.

3.3.2 Beans prices



n=330

The average price of beans increased from Ksh88 to Ksh95 per kilo. Prices went up because beans were not available at markets. The upward price trend is expected to last

long since the harvest for beans is not expected soon. This is normal for such a time of the year.

3.4 Income

3.4.1 Crop income

There was no significant crop income or sales from households/farms.

3.4.2 Livestock income

Income from livestock sales was less than for the previous month. Livestock prices went up but sales were few thus less net income from all livelihoods. The trend was not normal and impacted negatively on food security.

3.4.3 Other income

Income sources such as charcoal burning and casual wages sustained most households. Efforts to reduce charcoal burning and forest destruction were on. Several households had difficulties in survival and earning their living due to limited alternatives of income sources since charcoal burning was being discouraged.

3.5 Cereal: Meat price ratio

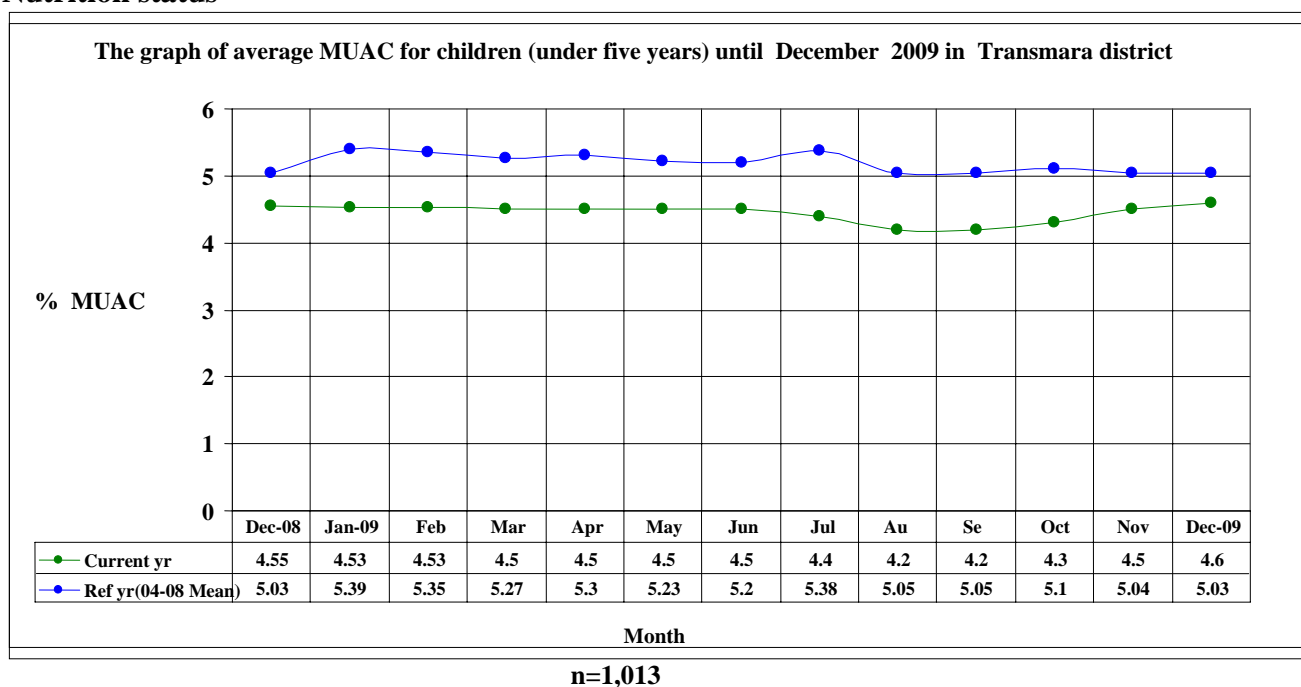
Table for Cereal: Meat Price Ratio

Nov 2008	Jan 09	Feb	Mar	Apr	May	Jun	Jul	Aug	Sep	Oct	Nov	Dec 09
106.25	106.22	106.26	106.38	106.45	106.53	106.85	106.70	106.50	106.50	106.70	106.97	106.84

The cereal/meat price ratio decreased from 106.97 to 106.84. This was because the increased livestock prices during the month despite the steadily increasing cereals prices. This had a positive implication on food security as there was a little bit less meat for cereals trade. This had a positive impact on food security.

4.0 Human welfare indicators (utilisation of food)

4.1 Nutrition status



The nutrition status of children under five deteriorated during the month. The percentage of those rated at risk of malnutrition rising slightly from 4.5 in November to 4.6. This was attributed to drought and milk reduction at household level. The rate was still normal but still tending to alert. However, it might worsen if the drought situation persists.

5.0 Current interventions

5.1 Non-food intervention

The conflict management meetings were on-going, as had been resolved by the DSG, especially in serious conflict hot-spot. The District peace committee had developed better strategies for conflict resolution in the district.