

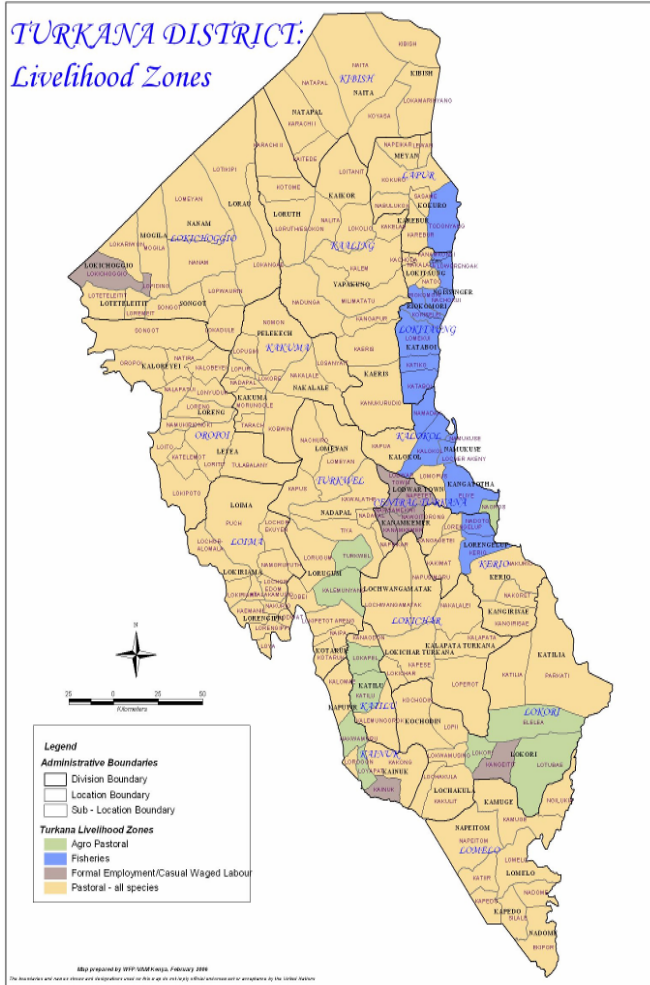


**OFFICE OF THE PRIME MINISTER
MINISTRY OF STATE FOR THE DEVELOPMENT OF NORTHERN KENYA AND OTHER ARID LANDS
ARID LANDS RESOURCE MANAGEMENT PROJECT II**

DROUGHT MONITORING BULLETIN, DECEMBER 2009

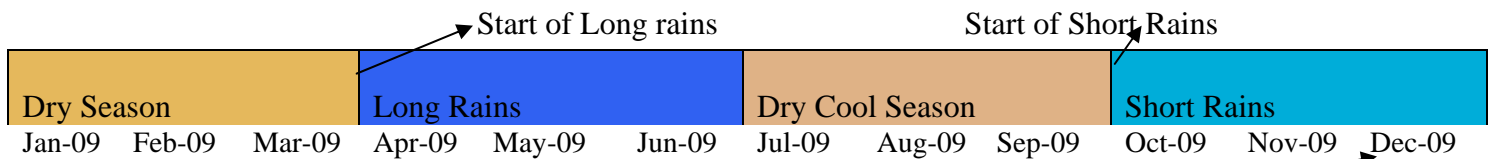
Turkana North, Central, West, East, South and Loima Districts

Warning Stages



Livelihood Zone	Warning Stage	Trend
Pastoral-all species	Recovery	Slight Improvement
Agro-Pastoral	Recovery	Slight Improvement
Fisheries	Recovery	Slight Improvement
Formal Employment/Casual Labour	Recovery	Improvement
District	Recovery	Slight Improvement

Seasonal Calendar



- Improvement in the quality and quantity of pasture and browse.
- Decrease in milk production.
- Decrease in number of livestock newborns.

Situation overview

- The Greater Turkana district received very good amount of rainfall towards the end the month.
- The quality and quantity of pasture and browse in wet season grazing areas improved moderately.
- The average walking distance to and from water sources has reduced from 3.3 km recorded in November to 3.0 km.
- The body condition of most livestock species improved compared to the previous month. The mortality rate for all livestock species' has decreased from 9.63 % in November to 7.23 %. The average birth rate for livestock has decreased from 16.83% in November to 10.33%.
- The livestock sales rate decreased marginally from 3.75% recorded in November to 3.73%.
- Household milk production across the six districts decreased from 11.63% in November to 8.37 %.
- Fewer conflict incidences were reported during the month in all the cross border zones of Turkana.
- Most health centres recorded cases of malaria and upper respiratory tract infections. Cholera and measles outbreaks were reported.
- The nutrition status of children below five years improved slightly during the month, with the percentage of those rated at risk of malnutrition dropping to 25.70 from 26.40 in November.
- Based on the general overview, the prevailing food security situation in six districts is under "Recovery" Phase.

Recommendations to DSG and KFSM

- Restocking for communities that lost their animals.
- Infrastructure development to communities affected.
- The high levels of malnutrition in vulnerable groups such as children under five years, pregnant and lactating mothers, the sick and the elderly should be seriously addressed.
- Provision of seeds and training to local farmers.
- Repair and provision of Water storage facilities communities that received rainwater.
- The Veterinary department and NGOs should offer Supportive treatments and vaccination for CCPP, PPR, worms, and mange and camel tryps. In addition vet drugs should be provided to CAHWS.
- Conflict early warning and rapid response should be strengthened.
- Support Cross border peace meetings and community dialogues in affected areas.
- Recruit more Kenya Police Reservists (KPR) in all the areas affected and supplying them with enough ammunition to lend hand to the government security agencies in place.
- Upscale food for assets (FFA) and cash for work (CFW) programs.
- Provision of the fishing gears to the fisher folk communities found a long Lake Turkana.
- Conduct emergency cholera treatment, construction of toilets and Public health education in affected areas.

- Repair of classrooms, dormitories and school structures to improve access to education.

Current interventions

Non-food interventions

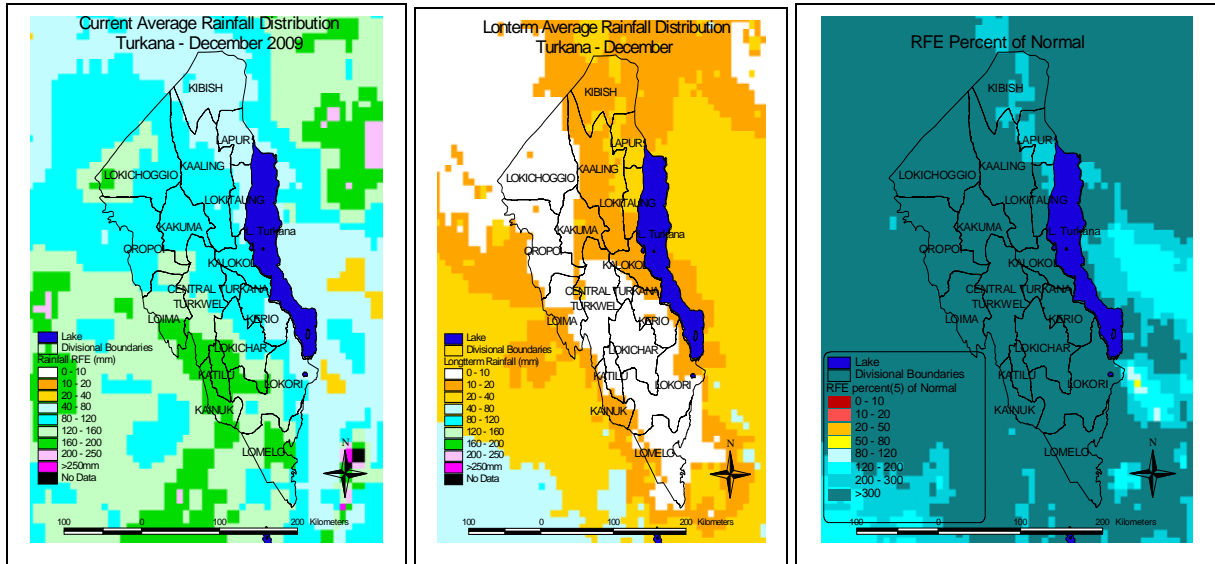
- The Hunger and Safety Net Programme (HSNP)-Pilot Phase.
- Njaa Marufuku Kenya project.
- The Drought Management Initiative Projects implemented by OXFAM GB and VSF- B.
- Water resources development by Practical Action; ALRMP, OXFAM-GB and Diocese of Lodwar.
- Supply of animal feeds by Ministry of Livestock.
- Conflict resolution and peace building initiatives by different stakeholders.
- Construction of rainwater structures and water pan.
- Livestock vaccination by LWF-Turkana Project through GOK.
- Emergency Cholera Treatment.

Food aid

- General food distribution by WFP through the lead agencies (Oxfam GB & World Vision-Kenya).
- Supplementary feeding for the severely malnourished under-fives, pregnant and lactating mothers, aged and disabled groups (Merlin, etc).
- Food for Assets supported by WFP and ALRMP II through TRP and World Vision Kenya.
- Food distributed by Christian Reformed World Relief Committee (CRWRC), Share International, Kenya Army (GOK) and Kenya Red Cross Society.

1.0 Environmental indicators (Stability)

1.1 Rainfall



- The Greater Turkana district received very good amount of rainfall towards the end the month. Most divisions received 5 % more rainfall than the normal expected during the seasonal calendar and rivers overflowed.
- The rains are expected to have significant effects on the food security.

1.2 Condition of natural vegetation and pasture

The quality and quantity of pasture and browse improved in the lowlands (Wet grazing areas).

1.3 Water sources and availability

1.3.1 Use of waters sources

Most surface and underground water sources have sufficient quantities water for both human and livestock consumption. In addition, the two seasonal rivers of Turkwel and Kerio have been overflowing, resulting to flooding.

1.3.2 Distance to water sources

The average walking distance to and from water sources reduced from 3.3 Km in November to 3 Km. The distances might improve if rains continue.

1.4 Emerging issues

1.4.1 Conflicts and human displacement issues

- Conflicts between the Turkana and their neighbours were still reported in December. For example, in Turkana South District, a number of raids were reported in Kainuk and Lokichar (Kalapata Location) divisions, which resulted in many lives and livestock being lost. In Turkana North District, a number of raids were reported in Kibish Division where on 2nd December the Nyang'atom of Ethiopia raided Lokamarinyang

along river Nariamao and Kaekaal where one person was killed but there were no livestock reported lost.

- In Turkana west, cases of cattle rustling were very high. On 10th and 12th December Lomeyan in Mogila location was raided by the Toposas from Southern Sudan, on the incidences 7 persons killed(From Both sides of Turkanas and Toposas) more than 3 injured and 100 heads of livestock driven away. Also on 8th December the Jiye from Uganda raided Lokipoto, Lomukasia kraal and two persons reported killed on the process.

1.4.2 Migration

Most pastoral herders are moving towards the wet season grazing areas (lowlands) in search of water and pasture.

1.5 Implications on food security

The inward and outward migrations had a negative effect on household food security.

2.0 Rural economy indicators (Food availability)

2.1 Livestock production

2.1.1 Livestock body condition

- Livestock body conditions for all livestock species improved. The livestock body condition in the areas which received the short rains improved.
- Average mortality rates for all domestic livestock species decreased from 9.63 % in November to 7.23 %. The mortality rates in shoats decreased from 11.75 % in November to 6.65 %. The mortality rates for the large stocks (cattle and camels) slightly increased from 7.55 % in November to 7.80 %. These deaths have been attributed to the outbreak of livestock diseases.
- The main causes of death in livestock, as mentioned above, are; heavy rains and resultant floods, PPR (Lomoo), CCPP (Shoats), Helminthosis (goats), CBPP (cattle) and mange (camels).Predators, Diarrhoea and internal parasites (worms) also contributed to livestock death.
- The average livestock birth rates decreased from 16.83% in November to 10.33 %. The specific birth rates recorded for each of the species were: 20.5%, 8.1%, 6.1% and 6.6% for cattle, sheep, goats and camels respectively. This trend is explained by the effects of the overwhelming drought and diseases on livestock production.

2.1.2 Livestock diseases

The common diseases and pests affecting livestock in the district are: Contagious Caprine Pleural Pneumonia (CCPP), Peste des Petits Ruminants (PPR), Foot and Mouth disease, Red Water and Helminthosis in shoats; Contagious Bovine Pleural Pneumonia (CBPP) in cattle, Haemorrhagic septicaemia and mange in Camels, leptospirosis, ticks and lice.

2.1.3 Milk production

The household milk production rate decreased from 11.63% in November to 8.37 %.

2.2 Crop production

2.2.1 Timeliness and status of crop production activities

Most farmers in irrigation schemes are expected to plant following the rains have been received at the end of the month in areas of Kerio, Katilia, Lokapel Nanyee, Kaeris and Kabulokor irrigation schemes.

2.2.2 Harvest

Most farmers expect to harvest at the end of the period. They can be certain only if the rains that have been received remain stable for the expected period.

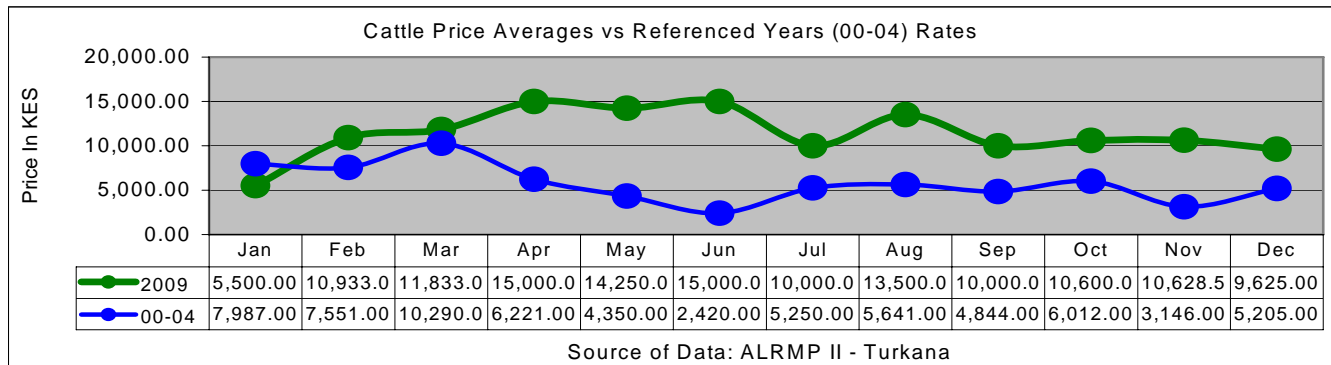
2.2.3 Implications on food security

The food security situation is expected to improve owing to the cumulative effects of the above conditions.

3.0 Access to food

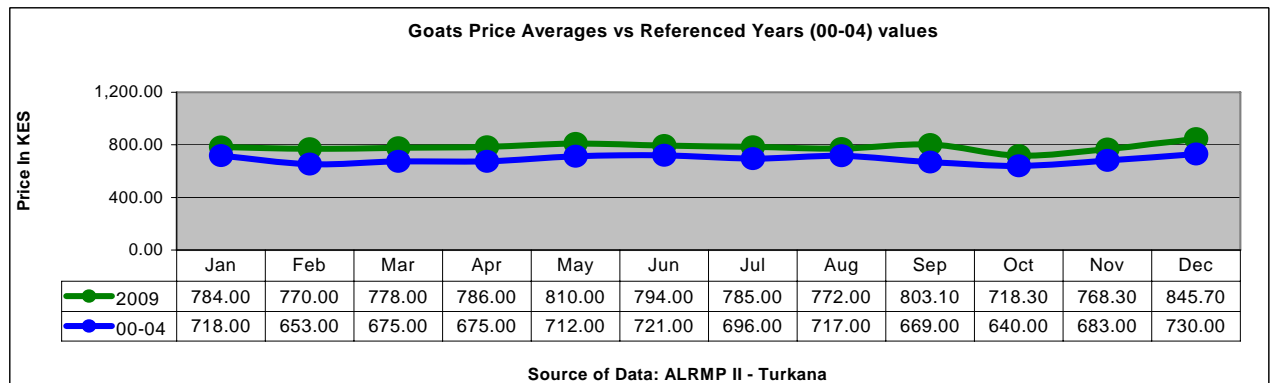
3.1 Livestock marketing

3.1.1 Cattle prices



The average cattle prices dropped from Ksh10,628.50 in November to Ksh 9,625. Relative to reference year (2004), the price was much higher than the Ksh5,205 recorded in the same period of the reference (2004).

3.1.2 Goat prices



The average goat price increased from Ksh768.30 last month to Ksh845. The price was higher than the reference year's value of Ksh730.

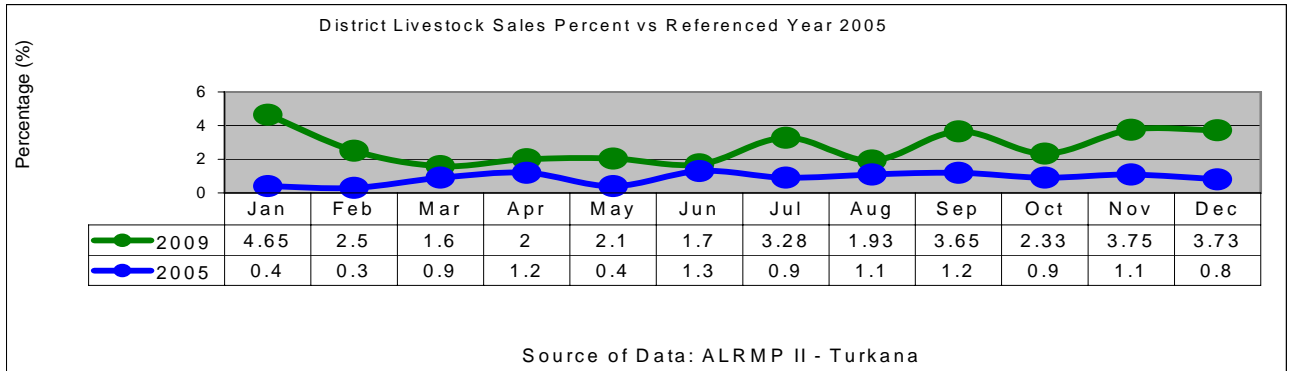
3.1.3 Sheep prices

The price of sheep increased by Ksh74.90 from Ksh760.50 in November to Ksh835.40.

3.1.4 Camel prices

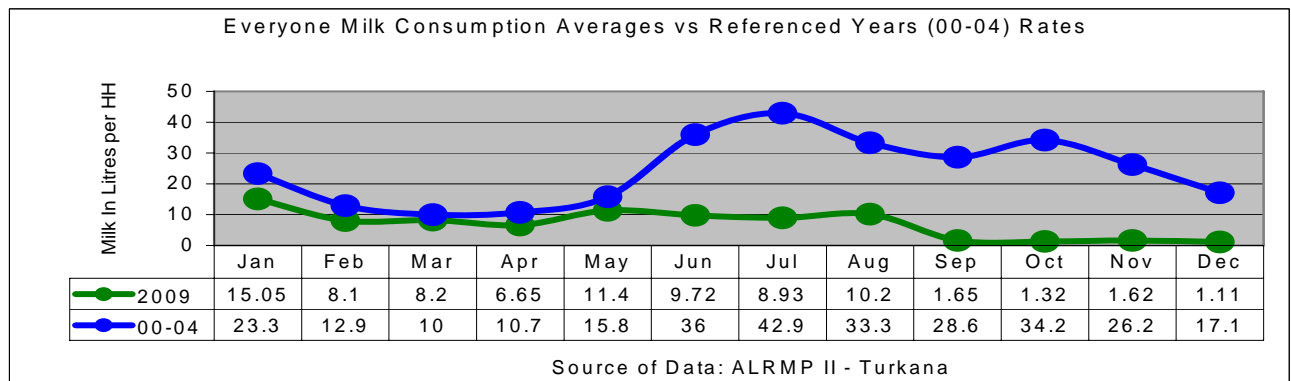
The camel sales price in December decreased to Ksh13,555.60 from Ksh16,562.50.

3.2 Livestock sales



The six districts of Turkana realized a slight increase in livestock sales rate from 3.75% in November to 3.73%. This was higher compared to 0.8% recorded in the same period of the reference year (2005). The rate dropped because most pastoralists kept their herds for fattening and production, now that the short rains have come.

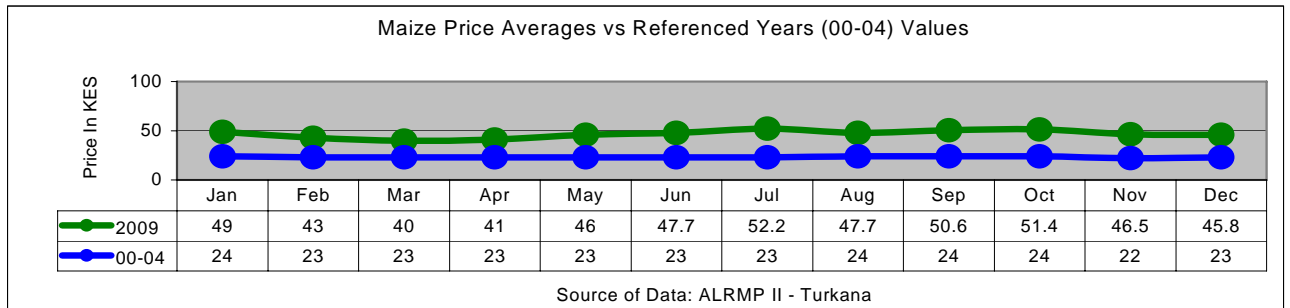
3.3 Milk consumption



There was a decrease in milk consumption rate. The actual average value for December was 1.11% compared to 1.62% recorded in November. This was 15.99 % lower than the value of 17.1% recorded for the same period of the reference year (2004).

3.4 Crop prices

3.4.1 Maize prices



During the month, the average price of maize across the greater Turkana district was Ksh45.80 per kilogram, ranging from Ksh20 to 60. This was a much higher price compared to the value of Ksh23 recorded during the same period of the referenced year (00-04).

3.4.2 Posho (maize meal flour) prices

The average posho price in December was Ksh48.40 per kilogram, ranging between Ksh28 and 60.

3.4.3 Sorghum prices

The average sorghum price recorded was Ksh58.80 per kilogram, ranging from Ksh24 to 64 per kilogram in different parts of the Greater Turkana District.

3.5 Income

3.5.1 Livestock sales

The livestock sales rate decreased from 3.75 % recorded in November to 3.73 %.

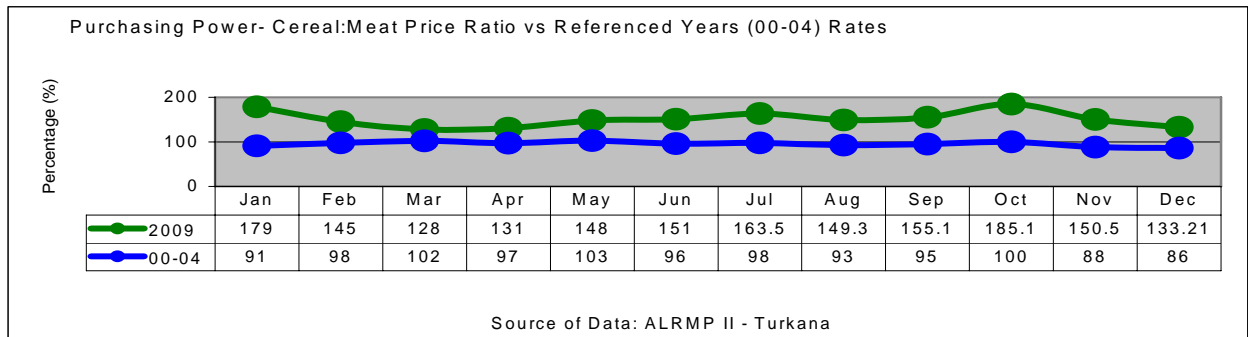
3.5.2 Crop income

Crop production might improve since some of the areas have received the short rains. However, army worms have infested some of the farms destroying planted crops.

3.5.2 Other income (Trade, Wages, etc.)

The percentage of people employed decreased from a value of 9.4% recorded during November to 8.5%. The population engaged in small-scale trade in most urban and peri-urban centres was 26.0%. At this period of the year, the rate of casual work wages increased from a value of Ksh128.20 in November to Ksh140.30.

3.6 Terms of trade



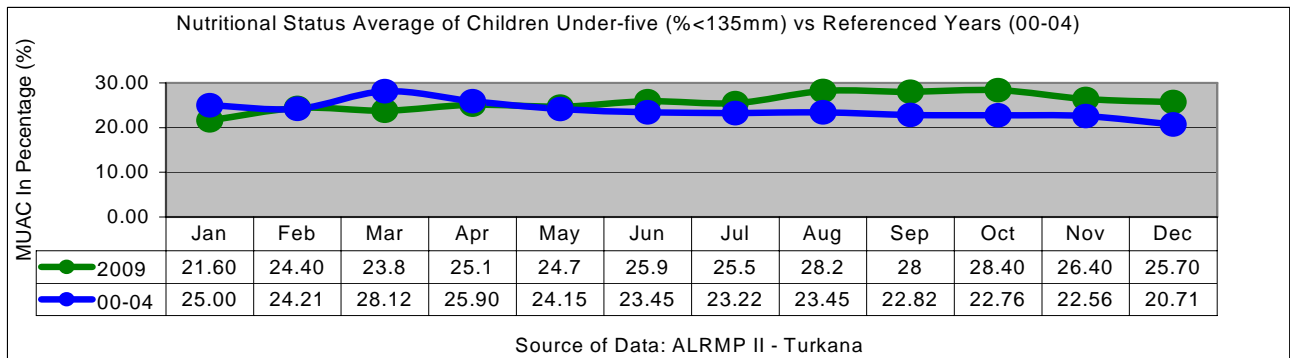
The district cereal: meat price ratio for December was 133.21%, which was a decrease compared to November. The Cereal: Meat price ratio was very high compared to the referenced year's (2004) percentage of 86%. This value of Cereal: Meat price ratio was indicative of the fact that terms of trade are slowly becoming pleasant to the herders.

3.7 Implications on food security

This decrease in cereal prices may have a positive effect on food security situation in the six districts of the Greater Turkana. In regards to the coping strategies index (0 to 10), the month of December 2009 recorded value of 2.2% compared to that of the previous month of November 2009 recorded 1.8%.

4.0 Human welfare indicators (utilization of food)

4.1 Nutrition status



The nutrition status of children below five years improved slightly during the month, with the percentage of those rated at risk of malnutrition dropping to 25.70 from 26.40 in November. This rate was higher than that recorded during the same period of the referenced year (2004). It placed Turkana at the "recovery" stage.

4.2 Human health

- The human health conditions in Turkana were very unstable. Cases of malaria and cholera were continuously reported across the greater Turkana district, while those of measles and polio were reported in Kibish, Nanam and Loima divisions and parts of Turkana south district.

- There were also many cases of the diseases such as Upper Respiratory Tract Infections (URTI), diarrhoeal diseases, internal parasites (worm infestation), measles, mumps, skin diseases (body rashes), and eye infections being reported in various parts of Turkana.
- Most of water borne diseases such as typhoid, cholera and diarrhoea would still affect the areas that are water stress since they share water with wild animals. Cholera has killed 9 persons in Nanam and Lokichoggio.
- Poor sanitation was still a major problem in all six districts of Turkana, especially in areas of Loboolo, Napeililim, Kalapata, Lokwii, Lopur, Lokwamosing, Nakukulas and in centres found along the river Turkwel and Lake Turkana. This problem was compounded by lack of public toilets in the communities and pit latrines in schools found in those areas.

5.0 Current interventions

5.1 Non-food interventions

- The Hunger and Safety Net Programme(HSNP)-Pilot Phase.
- Njaa Marufuku Kenya project.
- The Drought Management Initiative Projects implemented by OXFAM GB and VSF- B.
- Water resources development by Practical Action; ALRMP, OXFAM-GB and Diocese of Lodwar.
- Supply of animal feeds by Ministry of Livestock.
- Conflict resolution and peace building initiatives by different stakeholders.
- Construction of rainwater structures and water pan.
- Livestock vaccination by LWF-Turkana Project through GOK.
- Emergency Cholera Treatment.

5.2 Food aid

- General food distribution by WFP through the lead agencies (Oxfam GB & World Vision-Kenya).
- Supplementary feeding for the severely malnourished under-fives, pregnant and lactating mothers, aged and disabled groups (Merlin, etc).
- Food for Assets supported by WFP and ALRMP II through TRP and World Vision Kenya.
- Food distributed by Christian Reformed World Relief Committee (CRWRC), Share International, Kenya Army (GOK) and Kenya Red Cross Society.

5.3 Coping strategies

- Petty trade was mainly done in urban and peri-urban centres such as Lodwar, Kokuro, Kakuma, Lokichoggio, Kalokol, Kainuk and Lokichar. The commodities sold included fish (dry & fresh), wood products (firewood), handicrafts and livestock products.
- Small-scale irrigation farming was ongoing along Turkwel and Kerio rivers.
- Charcoal burning and selling.
- Reduction in the number of meals per day and consumption of wild foods (fruits and meat) and taboo foods, among others.

6.0 Recommendations to DSG and KFSM

- Restocking for communities that lost their animals.
- Infrastructure development to communities affected.
- The high levels of malnutrition in vulnerable groups such as children under five years, pregnant and lactating mothers, the sick and the elderly should be seriously addressed.
- Provision of seeds and training to local farmers.
- Repair and provision of Water storage facilities communities that received rainwater.
- The Veterinary department and NGOs should offer Supportive treatments and vaccination for CCPP, PPR, worms, and mange and camel tryps. In addition vet drugs should be provided to CAHWS.
- Conflict early warning and rapid response should be strengthened.
- Support Cross border peace meetings and community dialogues in affected areas.
- Recruit more Kenya Police Reservists (KPR) in all the areas affected and supplying them with enough ammunition to lend hand to the government security agencies in place.
- Upscale food for assets (FFA) and cash for work (CFW) programs.
- Provision of the fishing gears to the fisher folk communities found a long Lake Turkana.
- Conduct emergency cholera treatment, construction of toilets and Public health education in affected areas.
- Repair of classrooms, dormitories and school structures to improve access to education.