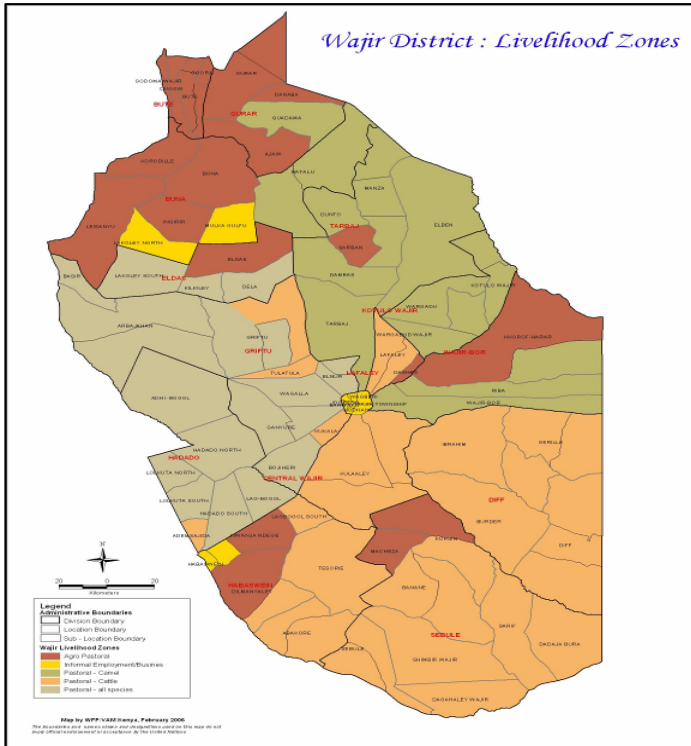




**OFFICE OF THE PRIME MINISTER
MINISTRY OF STATE FOR THE DEVELOPMENT OF NORTHERN KENYA AND OTHER ARID LANDS
ARID LANDS RESOURCE MANAGEMENT PROJECT II**

DROUGHT MONITORING BULLETIN, DECEMBER 2009

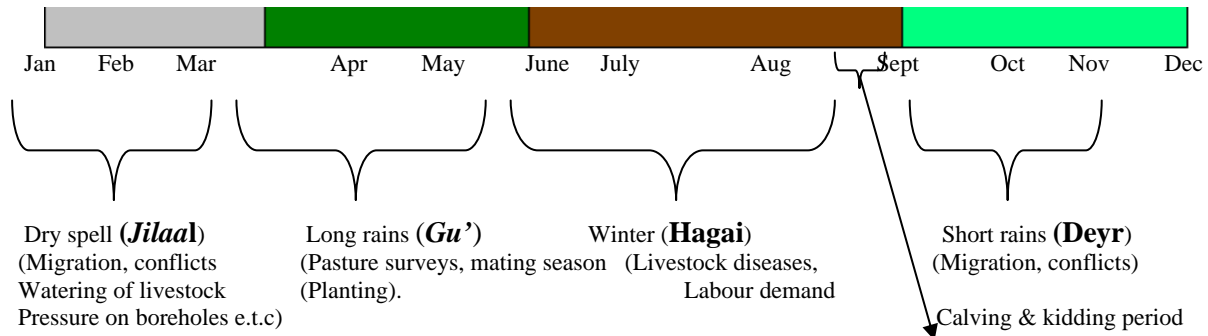
Wajir District



Warning Stages

Livelihood Zone	Warning Stage	Trend
Pastoral – All Species	Alert	Improving
Pastoral – Cattle	Alert	Improving
Pastoral – Camel	Alert	Improving
Agro – Pastoral	Alert	Improving
Informal Employment/Business	Alert	Improving

Seasonal Calendar



Situation overview

- Rainfall was still being received in localised areas with low intensity, especially in Wajir central, Wajir Bor, Bute and Boji areas. However, parts of Wajir West received low rainfall, especially in Basir and Arbajahan in Wajir West District, Gunana, Tarbaj and Ogoralle in Wajir East.
- The quality and quantity of pasture, browse and forage improved tremendously, especially in areas that received adequate rains like Diif, Salamaa, Burder, Sarman, Konton, Hadado, Eldas, Buna, Bute and Gurar areas.
- Availability of water improved following the moderate rains received, with most of the pans, dams and ponds containing water while the same was not utilised exhaustively since most of streams and lagas still had water.
- Livestock body condition continued to improve, though they were wasted during the last successive droughts.
- Diseases like PPR, CCPP, infestation of ticks and mosquitoes were reported, especially in lowland areas of Diif, Habaswein divisions and Hadado.
- Pests, birds and weevils affected crops grown in agro-pastoral areas, especially in Wajir North, parts of south like Qanjara, Diif, Tarbaj and Eldas farms.
- Prices of livestock increased for all the species due to the improved body condition. Camel prices increased from Ksh8,479 to Ksh8,940, cattle from Ksh6,084 to Ksh7,489 and goats from Ksh1,441 to Ksh1,461 compared to the previous month.
- Consumption and production of milk increased slightly but 750ml bottle of camel milk was sold at Ksh40 to 50, Goat milk at Ksh80 to Ksh100 and cow milk at Ksh50 to Ksh 60.
- Outward migration of livestock was reported, especially towards Burder in Wajir South, Hadado in Wajir west, Bute, Gurar , Sakegamatha in Wajir North and Dunto and Sarman in Wajir East. Movement of livestock was an indication of unproportional/unequal distribution of rainfall across the district.
- The main causes of morbidity and mortality in the district remained malaria, URTI, intestinal worms and malnutrition. Cases of malaria and diarrhea increased in the health facilities as a result of stagnant water, poor drainage system and growth of bushes, resulting in breeding of mosquitoes.
- Due to slight improvement of availability of milk, the nutrition status of children below five years improved slightly, with the percentage of those rated at risk of malnutrition dropping to 27.5% compared to 29.0% the previous month.
- Emergency Operation Program (EMOP) was up scaled to cover 303,000 persons with proposed ration of 75% district wide. Central 40%, Habaswein 60%, Buna 50%, Tarbaj 50%, Wajir bor 70%, Kotulo 70%, Diif 50%, Gurar 60%, Griftu 60%, Bute 50%, Eldas 50%, Hadado 70% and Sabuli 60% through the lead agency Aldef- Kenya and Wasda.
- The area was relatively calm with regard to security. However, there were some persisting concerns such as attempt of hijacking for human, car and stock theft along the Wajir West – Moyale borders.
- Food prices were high as the district relies on food brought in from Wajir town, with a kilogram of rice being sold at Ksh 90, beans Ksh80, sugar Ksh100 and maize for Ksh58. The majority of the population cannot afford these prices because their purchasing power has been greatly reduced by loss of their livestock. This has in turn led to 75 percent of the population totally relying on food aid provided by WFP through ALDEF; and GOK

targeting vulnerable groups (children under 5 years, pregnant and lactating women; the elderly and infirm).

Recommendations to DSG and KFSM

- Provision of Long Lasting Insecticides Treated Net.(LLITN, Mphs, SCUK).
- Spraying of households with vectors/chemicals, especially in cesspools, stagnant water, bushes and debris to reduce mosquito menace.(MPHS,SCUK).
- Natural resource management and sensitizing communities on wet/dry grazing pattern.
- Strengthening of peace conflict mechanism, especially along Wajir – Marsabit-Isiolo border.(Wpda,OOP, Alrmp)
- Restocking programme, especially cattle and shoats.(Action MoLD/OXFAM, VSF/Alrmp/KRCS).
- Provision of funds for mass vaccination of small stocks against PPR and CCPP in the 4 districts. (Livestock,Vsf, Oxfam, Alrmp)
- Nutrition intervention, especially in the worst affected areas like Wajir bor, Kutulo, Hadado, Eldas and Buna through SFP/OTP as a recovery strategy to supplement milk. (SCUK, Mophs, Alrmp)
- Improved coverage of OTP and SFP with active case finding(scuk,merlin and Mophs/moms).
- Infant and Young Child Feeding promotion program through(Mphs, Moms, SCUK and MERLIN.)
- Prevention and response preparedness for livestock disease outbreaks.(vsf, Oxfam, Mold, ALRMP)
- Support for skimming/condensing/drying milk for use in times of drought as during the rainy season, milk is often wasted due to lack of milk processing plant.(Scuk, Merlin, Mphs, Alrmp)
- Advocacy for preservation of traditional grazing areas, creation of awareness of grass-planting and investment in alternative livelihoods and food types. (ALRMP)
- Up scaling of existing small-scale farms through bucket-irrigation and support to stockiest of seeds and tools. (Alrmp, MOA).

Current interventions

Food aid

- Nutritional supplementary program by Merlin in Wajir west/North and Save the Children UK in Wajir East and South.
- Hunger Safety Net program (HSNP) by MSDNK&OAL.
- EMOP by World Food Program/GOK through the lead Agency Aldef-Kenya and implementing agency Wasda.
- School feeding program supported by WFP.
- Blanket feeding programme for under five, pregnant and lactating mothers by WFP/Save the children/Aldef
- Support to grannies by Catholic missions.
- OVC support through Islamic institutions like Shallete and Madarasatul Al itisam

Non – food interventions

- Provision of seeds by the Ministry of Agriculture and Arid Lands Resource Management Project.

- Afforestation by the forest department.
- Mobile school by ALRMP & MOE. Mobile VCT services supported by APHIA II
- Water and sanitation by Oxfam GB.
- HSNP(Hunger and safety net program).
- Continuous health education by the ministry of public and medical services..
- Sports activity through youth funds.

1.0 Environmental indicators (Stability)

1.1 Rainfall

The intensity of rainfall was low during the month, however sporadic rainfall was received especially in Wajir central, Lagbogol, Boji, Bute and Hadado. Generally the amounts of rainfall received during the last season were below average especially in parts of Wajir west like Basir, Arbajahan, Tarbaj and Khorof Harar in Wajir East.

1.2 Condition of natural vegetation and pasture

The availability and quality of pasture, browse and forage improved all over except in Arbajahan, Tarbaj and Gunana.

1.3 Water source and availability

Water availability improved and many ponds and pans impounded water. Livestock moved away from boreholes and were in the wet season grazing areas. Most of the livestock depended on ponds, streams and lags for watering purposes.

1.3.1 Household access to water

Accessibility of water improved, though the quality was poor due to dissolved solids in the runoff water. Contamination of water with ecoli and other impurities was common due livestock deaths in the last dry season.

1.3.2 Livestock access

Accessibility of water improved and the main sources for livestock were ponds and pans that impounded water. The livestock moved away from boreholes and were in the wet season grazing areas. The trekking distance for water reduced to less than 8 km.

1.4 Emerging issues

- The two international Agencies in the district, Merlin and OXFAM GB, will phase out programming in 2010 and there will be need to continue support to the Government ministries and especially in nutrition, health and food security sectors.
- Increase in vectors and other pests especially in Agro-pastoral areas.
- Increase in commercial food prices.
- Closure of Kenya-Somalia boarder leading to increase in commercial food prices like sugar.

1.4.1 insecurity/conflict/Human displacement

With regards to security, the area was relatively calm but there were some persisting concerns like attempt of hijacking for both Human, car and stock theft along the Wajir West – Moyale borders. Human-animal conflicts were reported, particularly hyena attacks in Garseqoftu Location of Wajir west District.

1.4.2 Migration

- There was migration of livestock to areas that received good rains, especially towards the South and North. Migration of livestock at this time is an indicator of poor season since pastoralist normally does not migrate if the rains are good in all the areas.

1.5 Implications on food security

- Increased prices of commercial food, poor road network, poor livestock market will have a negative setback to the pastoral communities.
- Poor rains will affect the pasture regeneration, cause crop failure and affect the general food security of the pastoralist and agro-pastoralist.
- Closure of Kenya-Somalia border will affect the purchasing power of the community since the prices of essential commodities have increased.

2.0 Rural economy indicators (Food availability)

2.1 Livestock production

Livestock production was still low following the stress of the drought. However, production is expected to improve with improved pasture and water availability.

2.1.1 Livestock body condition

The livestock body condition was fair and continues to improve though their bodies were wasted during the successive droughts.

2.1.2 Livestock diseases

Diseases like PPR, CCPP, infestation of ticks and mosquitoes have been reported especially in low lands areas of Diff and Habaswein divisions.

2.1.3 Milk production

Milk consumption and production improved compared to the previous month.

2.2 Crop production

2.2.1 Timeliness and condition of crop production activities

The areas that received good rains are expected to harvest since the rain days were well distributed. Crops were planted in time and a good harvest is expected if the rain continues at the same magnitude. The crops include maize, millet and sorghum. Maize and millet were still being cultivated and are expected to be harvested if some showers are received.

2.2 Pests and diseases

Pests and diseases were reported especially in crops planted earlier. There was high infestation of pests that were clearing vegetation, especially leaves of trees.

2.2.3 Harvests

There were no harvests during the month under review since the crops had not matured. However, crops in the small vegetable farms under shallow well irrigation in Wajir central

were being harvested from time to time. Products such as water melons were continuously being harvested especially in Wajir central.

2.2.4 Implications on food security

The expected harvest will slightly improve food security especially in the agro-pastoral livelihood zone.

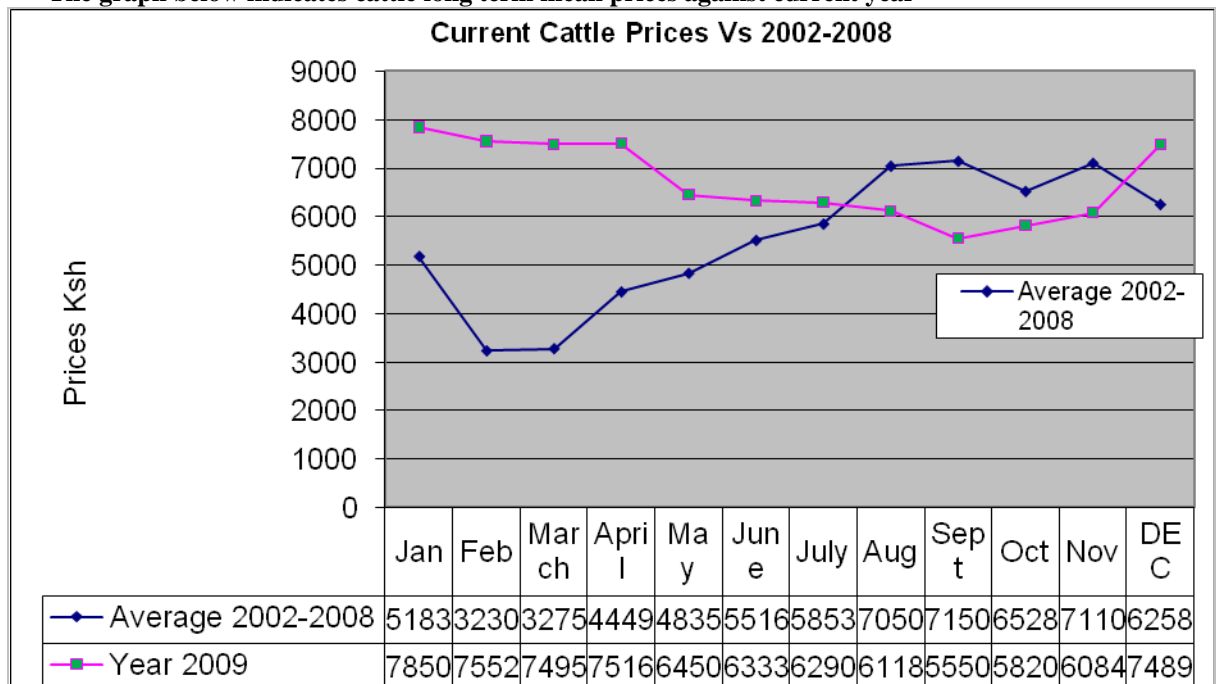
3.0 Access to food

3.1 Livestock marketing

Livestock prices slightly increased in all the species due to the improved body condition. The sale rate is low but is expected to improve since the condition of livestock is also improving.

3.1.1 Cattle prices

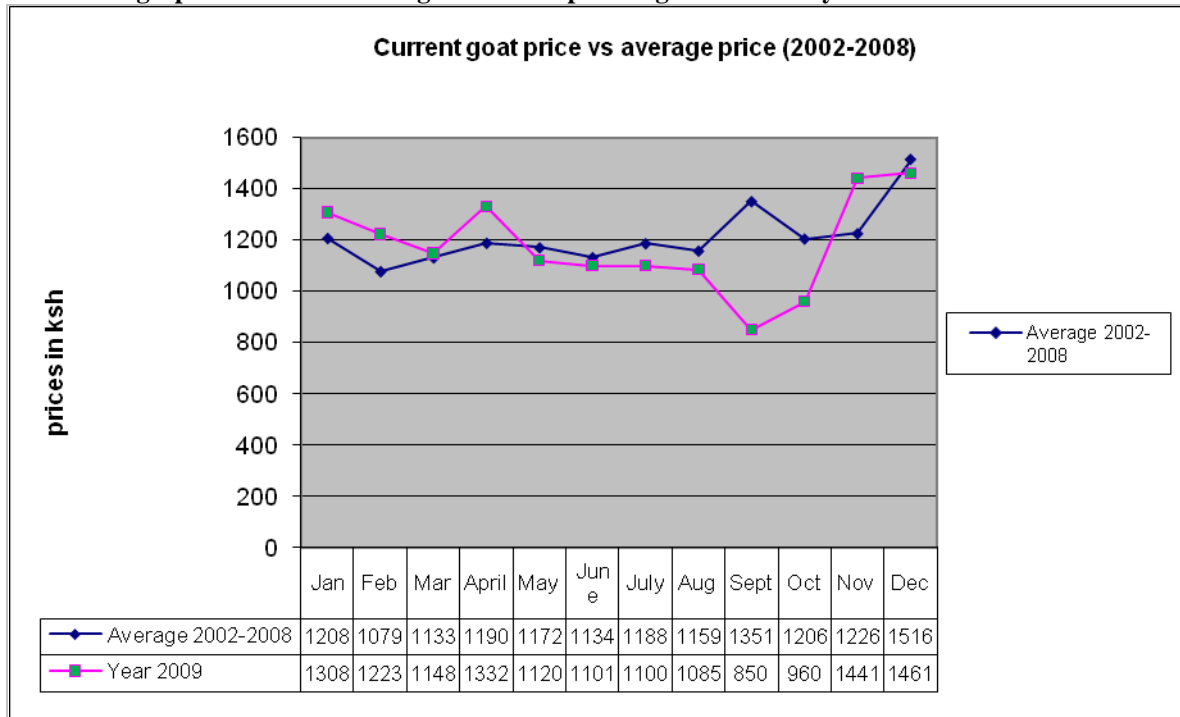
The graph below indicates cattle long term mean prices against current year



Livestock prices continued to improve, especially for cattle as their body condition continued to improve. The prices increased compared to the previous month from Ksh 6084 to Ksh 7489.

3.1.2 Goats prices

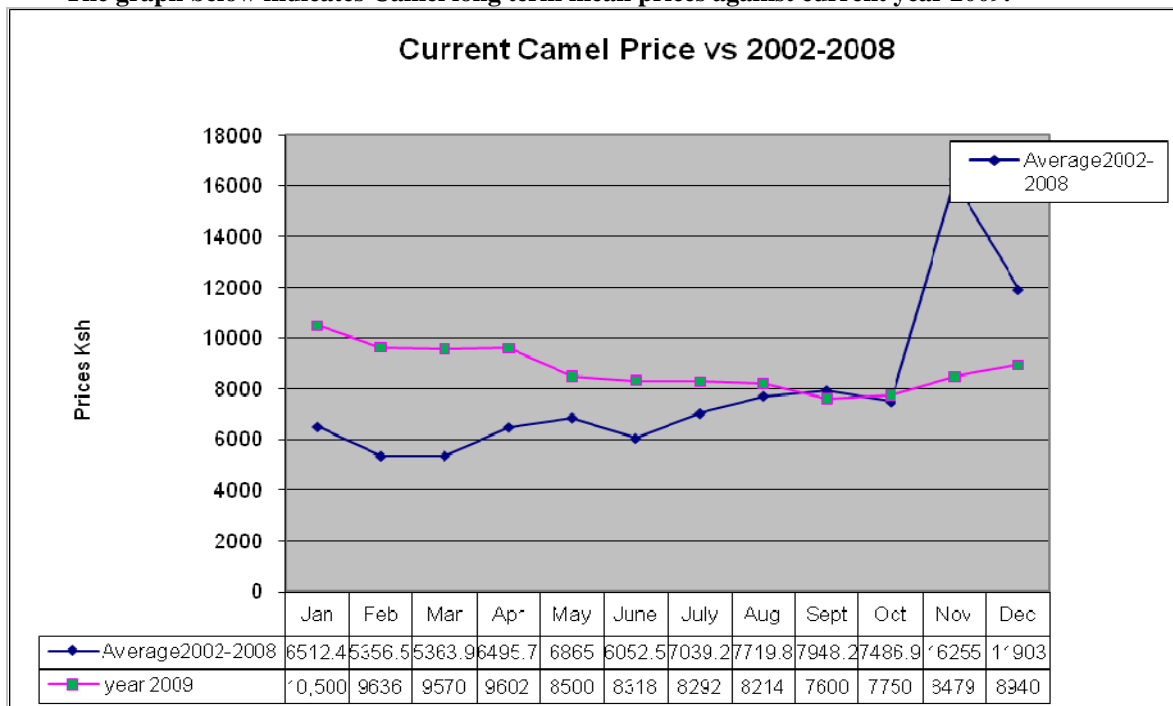
The graph indicates Goat long term mean prices against current year 2009



Goat prices increased compared to the previous month due to improvement in their body condition. The average price was Ksh1,461 compared to the previous month's Ksh 1441. Goats were also sold to pay for school fees.

3.3 Camel prices

The graph below indicates Camel long term mean prices against current year 2009.



The average camel prices increased slightly compared to previous month from Ksh8479 to Ksh8,940 during the month under review. Camels were exported to Ethiopia and Somalia hence increased demand in markets. Camels were also slaughtered in all ritual functions such as burials and weddings.

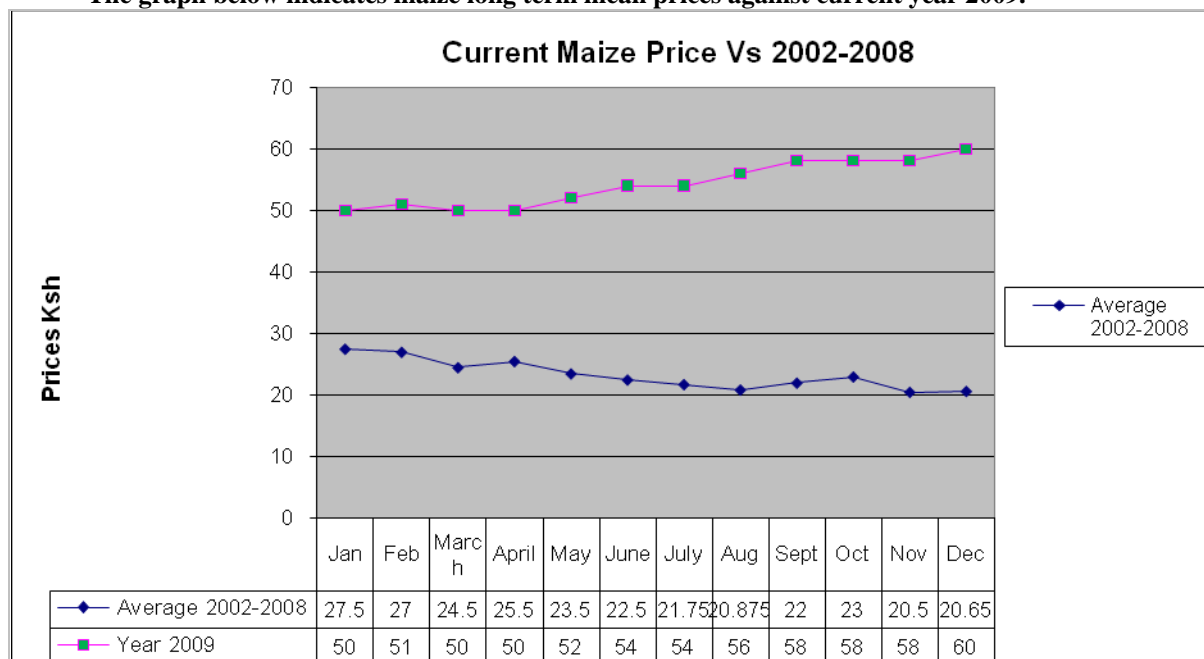
3.2 Milk consumption

Milk consumption improved compared to the previous month, although the commodity was scarce, with the little available used as alternative source of income to purchase other commercial foods.

3.3 Food prices

3.3.1 Maize prices

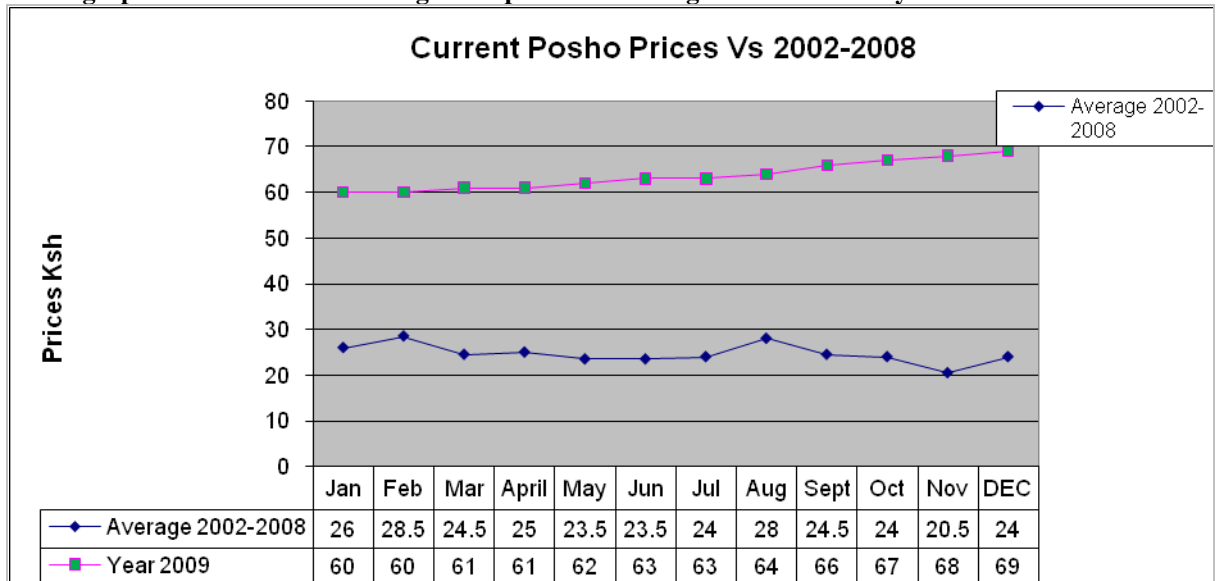
The graph below indicates maize long term mean prices against current year 2009.



The prices of maize increased compared to the previous month. The average price was Ksh60 per kilo, up from Ksh58. Though the commodity is issued as relief food, the demand is also high since it's the most common cereal used by the pastoralist due to its local availability and affordability.

3.3.2 Posho (maize meal) prices

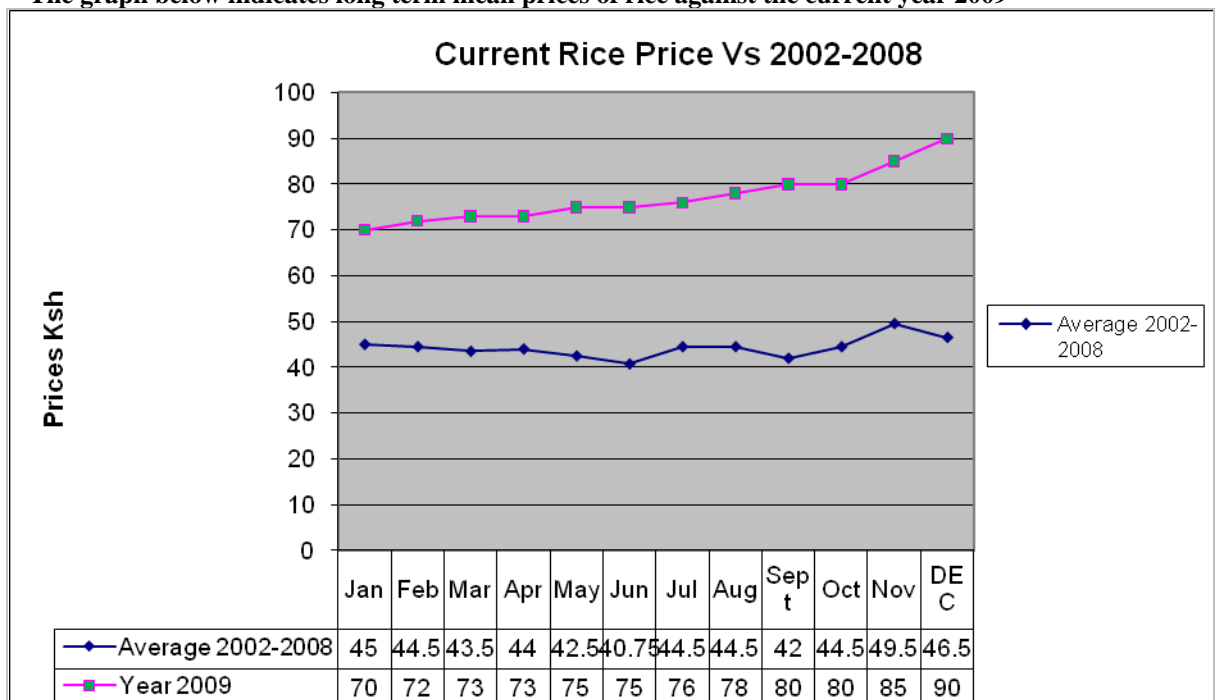
The graph below indicates the long mean price of Posho against the current year 2009



Most commercial food prices continued to escalate due to poor road network, global inflation and low purchasing power. Posho prices also increased compared to the previous month to Ksh69 per kilo.

3.4.3 Rice prices

The graph below indicates long term mean prices of rice against the current year 2009



The price of rice increased slightly compared to the previous month. A wide variety of rice was sold at the local market but the average price was Ksh90 per kilo.

3.5 Income

3.5.1 Crop income

Sale of vegetables and other kitchen farming crops were alternative source of income for smallscale farms, especially in Wajir central which are grown through small irrigation pumps. Water melon and arrow roots were also grown.

Livestock income

The main source of income was sale of livestock but price fluctuation, low demand and poor terminal market had a negative setback to the pastoralist community.

3.5.2 Other income

Sale of miraa, quarry products and daily casual labour, especially planting and other general wages. Charcoal burning and fetching of firewood were other alternative sources of income, especially in small business/informal livelihood zone such as Makaror, Ganyurey, Jowhar, Dotha and other peripheral areas of Wajir town.

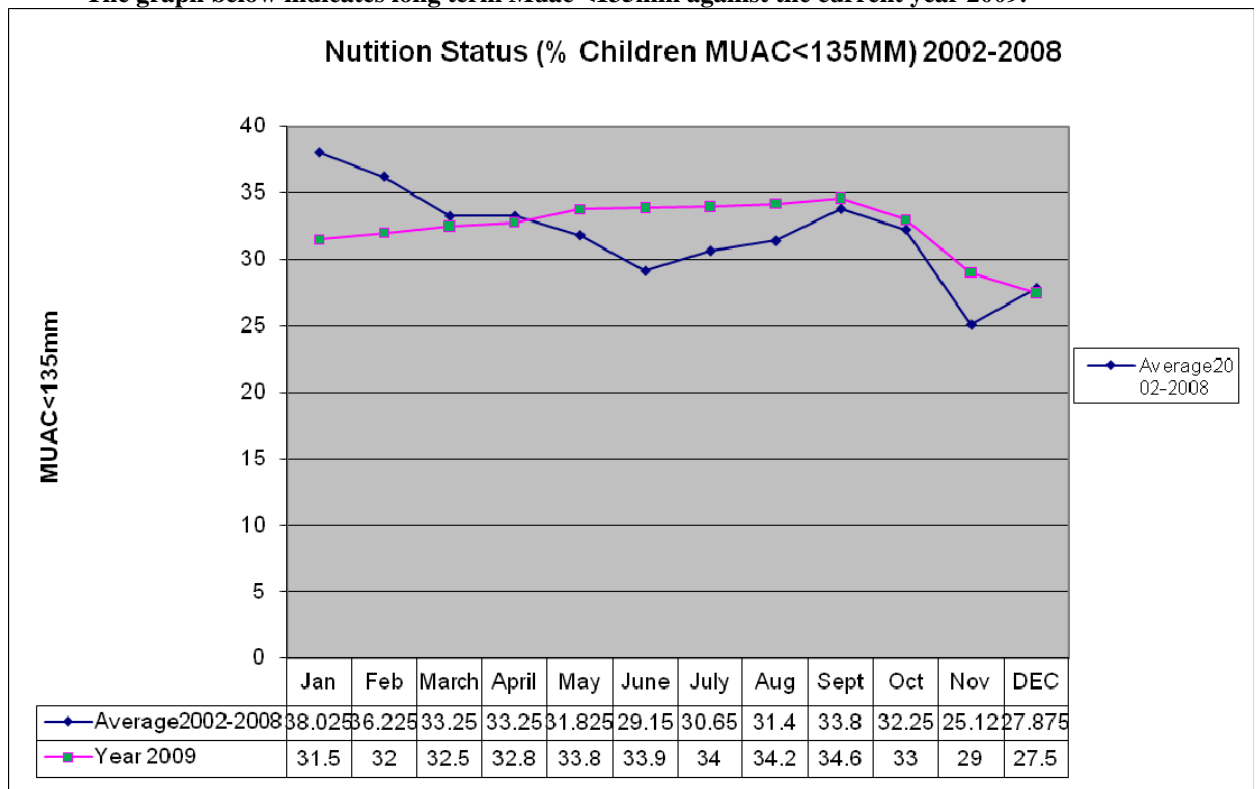
3.6 Implications on food security

The main source of income was sale of livestock but poor prices, low demand and poor body condition were all negative setbacks for the pastoralist community.

4.0 Human welfare indicators (utilisation of food)

4.1 Nutrition status

The graph below indicates long term Muac <135mm against the current year 2009.



- Due to slight improvement of availability of milk, the nutrition status of children below five years improved slightly, with the percentage of those rated at risk of malnutrition dropping to 27.5% compared to 29.0% the previous month.
- The trends improved following the availability of milk, especially in households in the pastoral areas. However in small settlements and urban areas milk was still scarce and the price keeps on increasing.

4.2 Health

The main causes of morbidity and mortality in the district remained as malaria, URTI, diarrhea and malnutrition. Major concern is increase of cancer cases which requires intensive research as several deaths have been reported in the district.

4.3 Flagged areas

Cases of kwashiorkor subsided but Diif was aflagged area for schistosomiasis. Areas bordering Wajir –Somalia were placed under security alert with fear of Al-shabab intrusion.

5.0 Current interventions

5.1 Non food interventions

- Sports activities through youth fund.
- Mobile VCT services supported by APHIA II.
- Water and sanitation by Oxfam GB.
- HSNP(Hunger and safety net program).
- Continuous health education by the ministry of public and medical services.

5.2 Food aid

- FFA-food for asset program by WFP through partner agency.
- Nutrition support in OTP/SFP by SCUK and MERLIN
- EMOP relief food distribution by WFP through lead agency, ALDEF-K and implementing partners (WASDA).
- Basic relief support from OOP.

5.3 Coping strategies

- Sale of gum and resins, mirra and quarry products such as white wash.
- School feeding program supported by WFP during the school holiday.
- Fattening of livestock especially bulls for alternative source.
- Sale of livestock for weddings/school fees.
- Fetching of firewood and charcoal burning.
- Reduction in number of meals per day.
- Purchasing of food on credit.
- Reliance on remittances.

6.0 Recommendations to DSG and KFSM

- Provision of Long Lasting Insecticides Treated Net.(LLITN, Mphs, SCUK).
- Spraying of households with vectors/chemicals, especially in cesspools, stagnant water, bushes and debris to reduce mosquito menace.(MPHS,SCUK).
- Natural resource management and sensitizing communities on wet/dry grazing pattern.
- Strengthening of peace conflict mechanism, especially along Wajir – Marsabit-Isiolo border.(Wpda,OOP, Alrmp)
- Restocking programme, especially cattle and shoats.(Action MoLD/OXFAM, VSF/Alrmp/KRCS).
- Provision of funds for mass vaccination of small stocks against PPR and CCPP in the 4 districts. (Livestock,Vsf, Oxfam, Alrmp)
- Nutrition intervention, especially in the worst affected areas like Wajir bor, Kutulo, Hadado, Eldas and Buna through SFP/OTP as a recovery strategy to supplement milk. (SCUK, Mophs, Alrmp)
- Improved coverage of OTP and SFP with active case finding(scuk,merlin and Mophs/moms).
- Infant and Young Child Feeding promotion program through(Mphs, Moms, SCUK and MERLIN.)
- Prevention and response preparedness for livestock disease outbreaks.(vsf, Oxfam, Mold, ALRMP)
- Support for skimming/condensing/drying milk for use in times of drought as during the rainy season, milk is often wasted due to lack of milk processing plant.(Scuk, Merlin, Mphs, Alrmp)
- Advocacy for preservation of traditional grazing areas, creation of awareness of grass-planting and investment in alternative livelihoods and food types. (ALRMP)
- Up scaling of existing small-scale farms through bucket-irrigation and support to stockiest of seeds and tools. (Alrmp, MOA).