

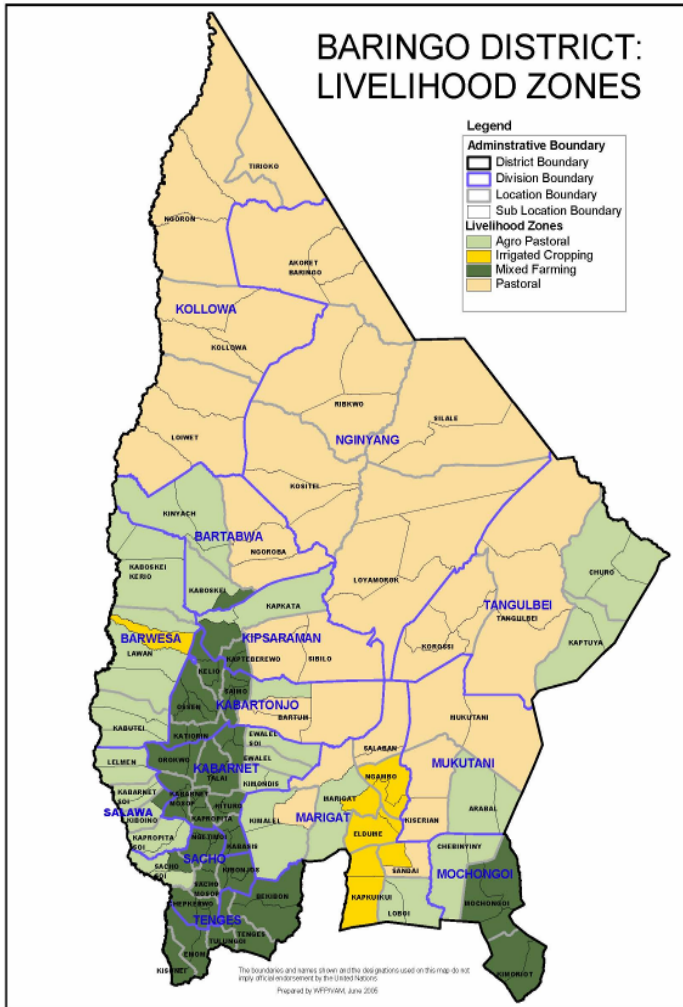


OFFICE OF THE PRIME MINISTER
MINISTRY OF STATE FOR THE DEVELOPMENT OF NORTHERN KENYA AND OTHER ARID LANDS
ARID LANDS RESOURCE MANAGEMENT PROJECT II

DROUGHT MONITORING BULLETIN, JULY 2009

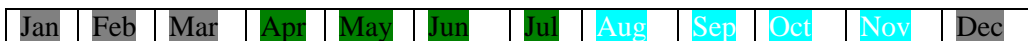
Baringo Central/ North, East Pokot and Marigat Districts

Warning Stages



Livelihood Zone	Warning stage	Trend
Pastoral	Alarm	Worsening
Agro pastoral	Alarm	Worsening
Irrigated Cropping	Alarm	Worsening
Mixed farming	Alarm	Worsening
District	Alarm	Worsening

Seasonal Calendar



- Dry season :- (Land preparation, minimal calving, lambing & kidding)
- Long rains :- (Planting, most kidding & lambing and minimal calving & honey harvesting)
- Short rains :- (Most calving & honey harvesting and minimal kidding & lambing, pre-harvest & harvesting)

Situation overview

- The districts received poor rainfall in the month and temporal distribution was also poor. The rainfall received had insignificant impact on the grazing and water resources in areas reported rainfall. A total of 44.8 mm average was received from 3 – recording stations, an average of 2 days.
- The quality and quantity of forage worsened in all the livelihood zones.
- Water availability for both human and livestock was insufficient in pastoral and Agro-pastoral livelihood zones.
- Body condition of livestock was poor and deaths were reported due to the effects of drought stress in the pastoral and agro-pastoral livelihood zones.
- Milk production was low and this was attributed to poor body condition of the animals due to insufficient pasture and browse.
- The average prices of livestock decreased in sheep while it slightly increased in cattle and goats. The increase in prices was attributed to availability of buyers during the month. Also poultry prices increased compared to last month due to better demand.
- The average prices of food crops and other commodities increased during the month owing to lack of supplies in the markets within the District and the neighboring districts.
- Sale of fish, casual labour, petty trade (local beer brewing e.t.c.) and sale of charcoal and sale of wood products was the other alternative sources of income for most sampled households during the month after the sale of livestock.
- The nutrition status of children below five years declined slightly, with the percentage rated at risk of malnutrition rising from 13.5 % the previous month to 14.0 %. This was attributed to inadequate issuance of supplementary food for children at the household level in the EMOP relief food distribution. This, however, is likely to worsen as milk production declines due to drought stress.

Recommendations to DSG and KFSM

- The Veterinary Department / Agencies should step up support to the livestock health sub sector through vaccinations and treatment of clinical cases. In particular, more efforts should be directed to investigate cases of Q-fever in goats in Kinyach (Bartabwa division), cases of CCPP and PPR in Ngoron (Kolowa division), cases of bloody diarrhoea outbreak in goats in Kamrio and Rukus in Nginyang and Tangelbei divisions respectively and Lice infestation outbreak in cattle in Kamrio (Nginyang division); ECF upsurge in Kipkata location (Kipsaraman division) and Kinyach (Bartabwa division); Mange outbreak in Kamrio (Nginyang division).
- The GOK and other aid agencies to put more effort to ensure that communities in East Pokot, North Baringo, Marigat and Baringo central districts are given continuous relief food supplies (GFD) and supplementary food for children until the stress situation normalizes as malnutrition cases are rising, prices of food commodities are rising, animals are dying due to drought effects hence people cannot cope with the stresses, also milk production from animals declined drastically due to the drought effects that has persisted for a long period.
- There is need to strengthen conflict prevention and peace building initiatives to maintain the already achieved level of peace and further reduce it to the lowest level along the borders of East Pokot, Baringo, Marakwet, Turkana, Laikipia west and Samburu districts to enhance peaceful co-existence.

- The MOH should make efforts to supply more anti-malarial drugs in all the rural health facilities that are far from the district hospitals to cope with Malaria upsurge at the moment and investigate cases of Enteric fever upsurge in Ng'ambo, Endao and Sirata communities in Marigat district.
- The District Game Warden to put more efforts to ensure that Baboons, Hyenas and Lynx predate on goats in Sirata (Mukutani division), Kositei location (Nginyang division), Barpello (Kolowa division), Chemintany (Bartabwa division), Rukus (Tangulbei division) and Kaptuya (Churo division) and elephants destroying farms in Kaptuya (Churo division) are contained to save the pastoralists and farmers who are losing their animals and crops daily.

Current interventions

Non-food interventions

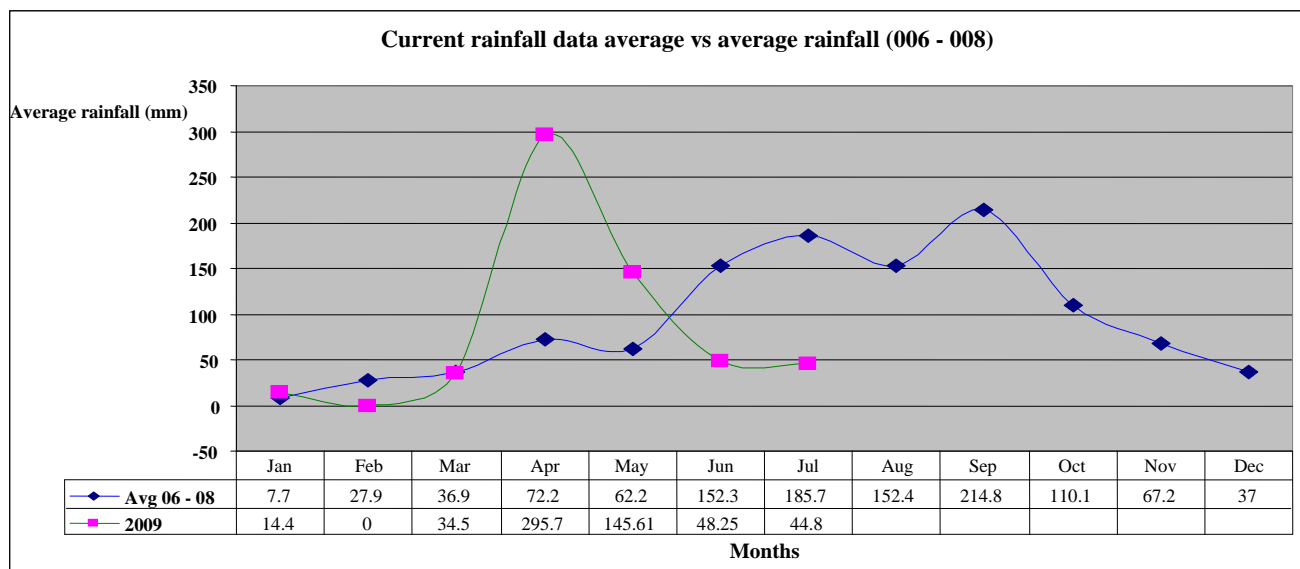
- Excavation of Apuketin and Kamrio (East pokot), Bukon (Bartabwa division) and Kongelbei (Marigat district) water pans – ALRMP.
- Rehabilitation of Chemorongion (Mochongoi division), Chesesoi and Kaptuya (East pokot) and Tibingar (Marigat division) Boreholes – ALRMP/ CDF/ AIC.
- Distribution of supplementary food in the district – ALRMP/ UNICEF.
- Peace building initiatives within the districts' of the project area by various stakeholders i.e. the PSC, DPC, DSC, World vision, Community Elders, Youth groups, Political leaders, Pastors and ALRMP.

Food aid

- The EMOP relief food distribution phase II commenced in late May 2009 targeting the following number of population in the districts: - East pokot – 47,423 (GFD), Baringo central – 3,476 (FFA), Marigat – 13,975 (FFA) and Baringo North – 23,288 (FFA) persons.

1.0 Environmental indicators (Stability)

1.1 Rainfall



Source: ALRMP rain gauge data stations

- The district received 44.8 mm average rainfall from 3- recording stations, 2 days average during the month in the project area compared to the previous month where there was 48.25 mm from 4- recording stations.
- This was not normal at this time of the year as this is known to be the long rains season. However, the dry spell season extended longer than expected.

1.2 Condition of natural vegetation and pasture

- The quantity of forage in all the livelihood zones worsened during the month due to lack of rain. The quality of the available pasture is poor.
- The average distance to grazing areas increased from 7.6 km. in the previous month to 8.6 km during the month.

1.3 Water sources and availability

- During the last four weeks there was a decrease in water availability following poor temporal distribution of showers in the project area.
- The water sources in use were pans and dams (40 % have water), natural rivers, traditional river wells, shallow wells, springs, boreholes, and lakes.
- Distances to the nearest water source during the month increased to an average of 4.0 km from 3.8 km in the previous month for most of the households.

1.4 Emerging issues

- The little showers received during the month made no improvement on the browse and pasture condition in the district. However, poor rejuvenation of pasture was noted owing to erratic rain experienced and the distances to water sources and pastures also increased.
- 80 % of the satellite herds were still held up at the dry season grazing points (Marakwet, Turkana central, Pokot central, Samburu and Laikipia west districts).

- Goats, cattle and sheep continued dying due to the effects of the extended drought in the project area.
- Baboons predated on goats due to lack of food in Sirata community (Mukutani division), Kositei location (Nginyang division), Barpello community (Kolloa division), Chemintany community (Bartabwa division) and kaptuya community (Churo division).
- Hyena predated on goats in Kolloa location and Rukus community (Korossi location).
- Elephants destroyed farms in kaptuya community (Churo division).

1.5 Implications on Food Security

- Worsening browse and pasture condition and increasing distances to water sources had a negative impact on household food security for the pastoralists.

2.0 Rural economy indicators (Food availability)

2.1 Livestock production

2.1.1 Livestock body condition

- Livestock body condition was fair for both small stock and cattle respectively in mixed farming and irrigated cropping livelihood zones and poor in pastoral and Agro-pastoral livelihood zones.
- Goats, cattle and sheep continued dying in the latter zones due to the effects of the drought experienced.
- This is not normal at this time of the year owing to extended period of the dry season.

2.1.2 Livestock diseases

- Suspected cases of Q-fever in goats in Kinyach community (Bartabwa division).
- ECF upsurge in Kipkata location (Kipsaraman division) and Kinyach (Bartabwa division).
- Suspected cases of CCPP and PPR in Ngoron location, Kolloa division.
- Bloody diarrhoea outbreak in goats in Kamrio and Rukus communities in Nginyang and Tangelbei divisions respectively.
- Mange outbreak in Kamrio (Nginyang division).
- Lice infestation outbreak in cattle in Kamrio community (Nginyang division)

2.1.3 Milk production

- Milk production declined in the district owing to extended effects of drought.
- This was not normal at the time of the year as the effects of drought extended.

2.2 Crop production

2.2.1 Timeliness and status of crop production activities

- Agro-pastoralists reported crop failure due to lack of rain.
- This was not normal at the time of the year as this was supposed to be the long rains season.

2.3 Implications on food security

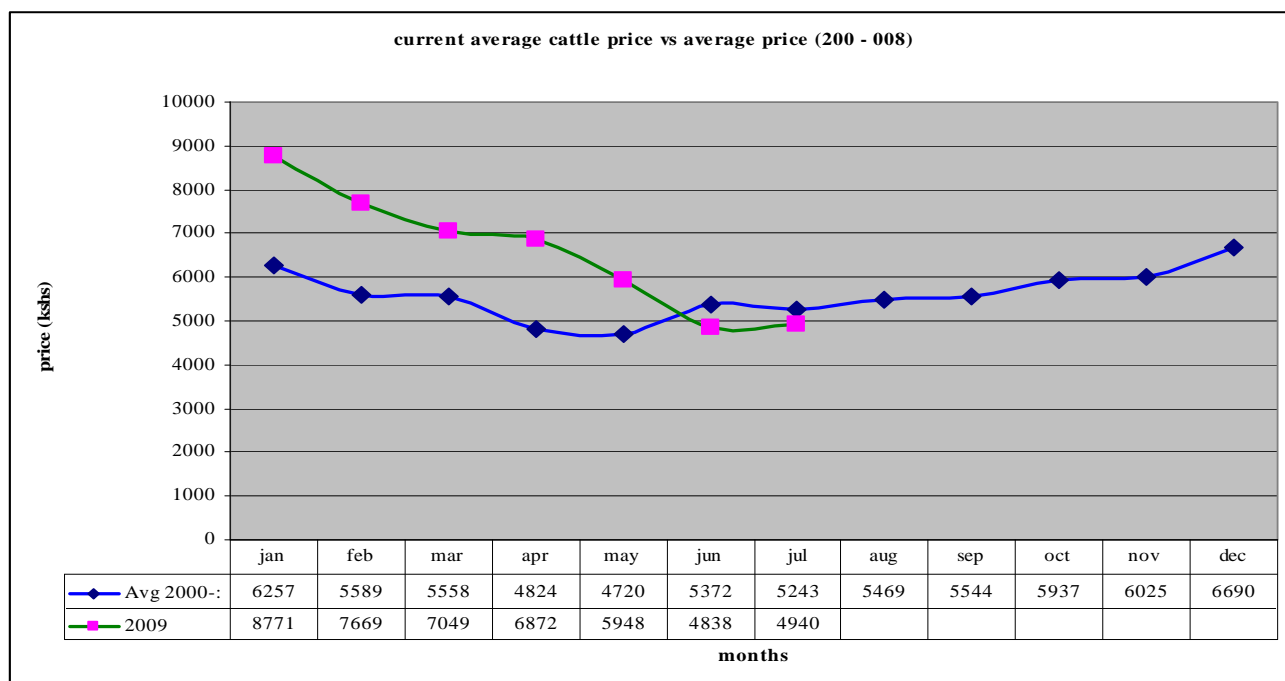
- Milk production at household level declined yet this is the food depended upon by the Pastoralists and children.

- Goats, cattle and sheep were dying due to drought stress. This was a major threat to food security at the household level. Relief foods need to be given to the population continuously until the situation normalises.
- Market prices of cereals and legumes remain high in the project area and availability in the markets remains scarce.

3.0 Access to food

3.1 Livestock marketing

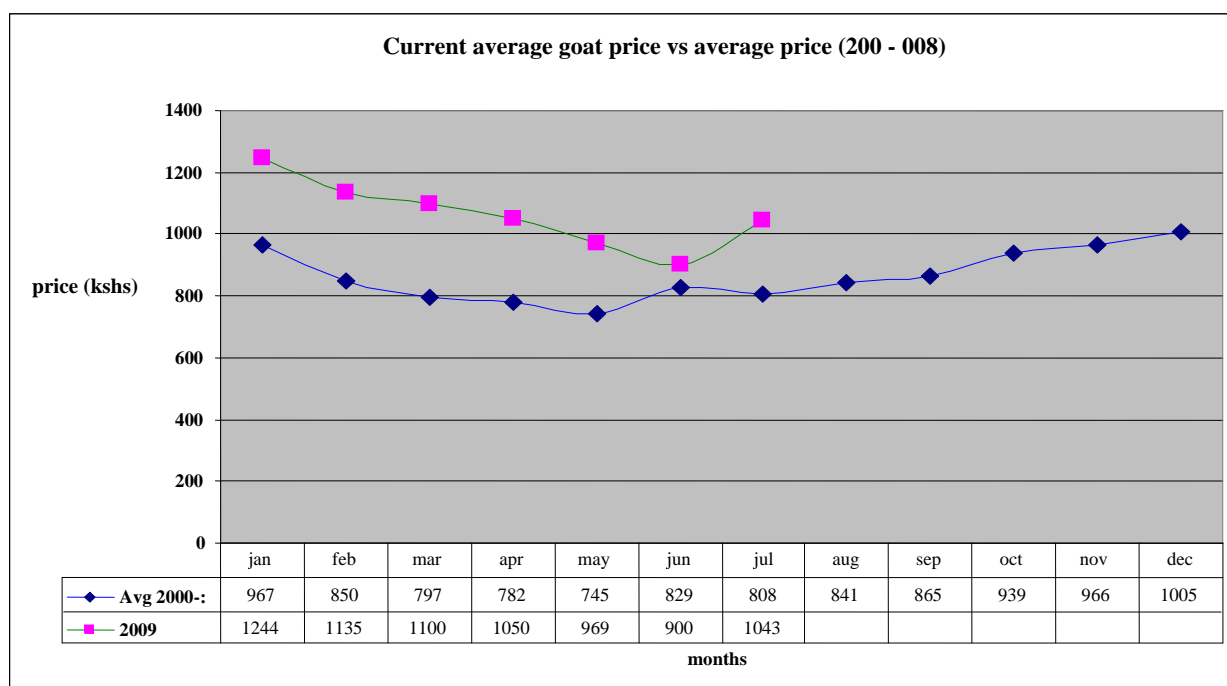
3.1.1 Cattle prices



N = 480 HH

- The average price showed a slight increase in the price of cattle from Ksh 4,838 in the previous month to Ksh 4,940 in July.
- The increase was normal at the time of the year when the price of cattle was expected to go up at the time of the assumed rainy season. The price was, however, lower than the long term mean by 5.8 % as shown on the graph.
- The slight price increase was attributed to availability of external buyers during the month.
- However, the poor body condition of the livestock owing to insufficient pasture during this period contributed to low prices. This was not good for household food security.
- Bartabwa division had the highest average cattle price at Ksh 6,000.
- This was attributed to fair body condition due to accessing favorable pasture along the Kerio River basin. Kipsaraman division had the lowest average price of Ksh 3,700 due to poor body condition.

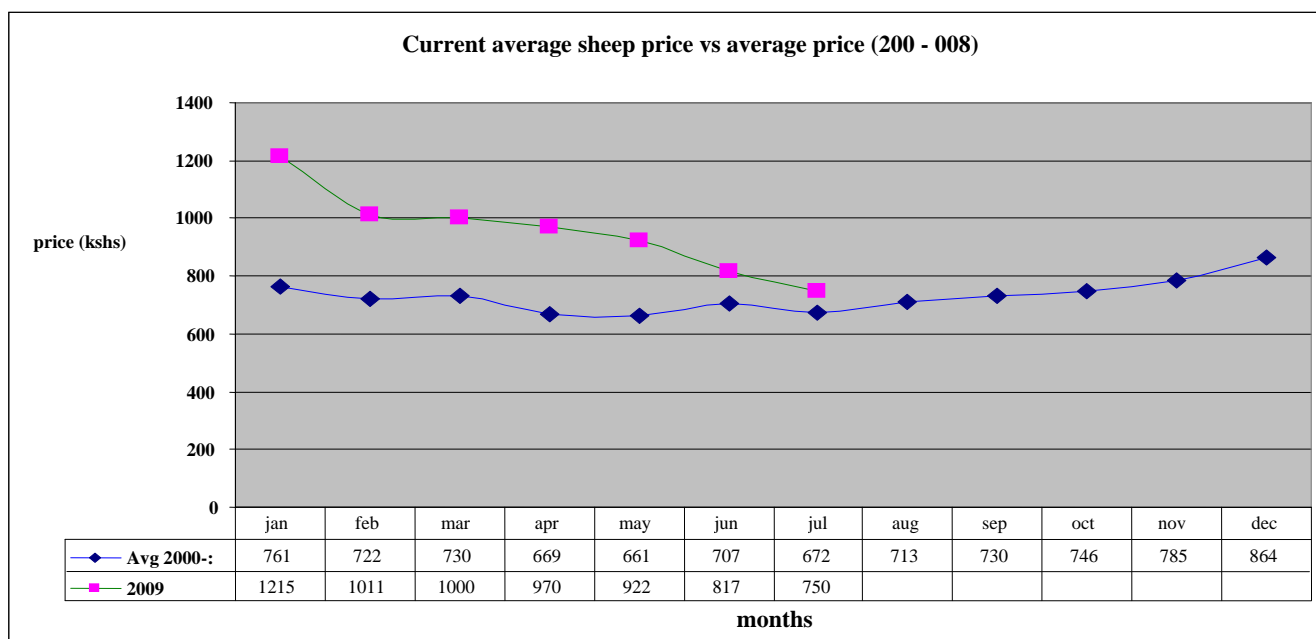
3.1.2 Goats prices



N = 480 HH

- The average goat price increased from Ksh 900 in June to Ksh1,043 in July showing price appreciation.
- The price was, however, slightly above the long term mean by 22.5 %.
- The increase was attributed to availability of external buyers during the month who offered good prices. This had a positive impact to household food security.
- Bartabwa division had the highest goat price average at Ksh1,814 due to access to external buyers, while Tangulbei division had the lowest price at Ksh623 owing to poor body condition.

3.1.3 Sheep prices



N = 480 HH

- The average sheep price decreased from Ksh 817 in June to Ksh 750 in July, showing depreciation.
- The price decline was attributed to poor body condition due to lack of pasture.
- The price was, however, slightly higher than the long term mean by 10.4 %.
- This had a negative impact on household food security.
- Mukutani division had the highest sheep price at Ksh1,100 owing to access to peri-urban prices while Kipsaraman division had the lowest price at Ksh475 as a result of poor body condition of the animals coupled with lack of buyers.

3.2 Livestock sales

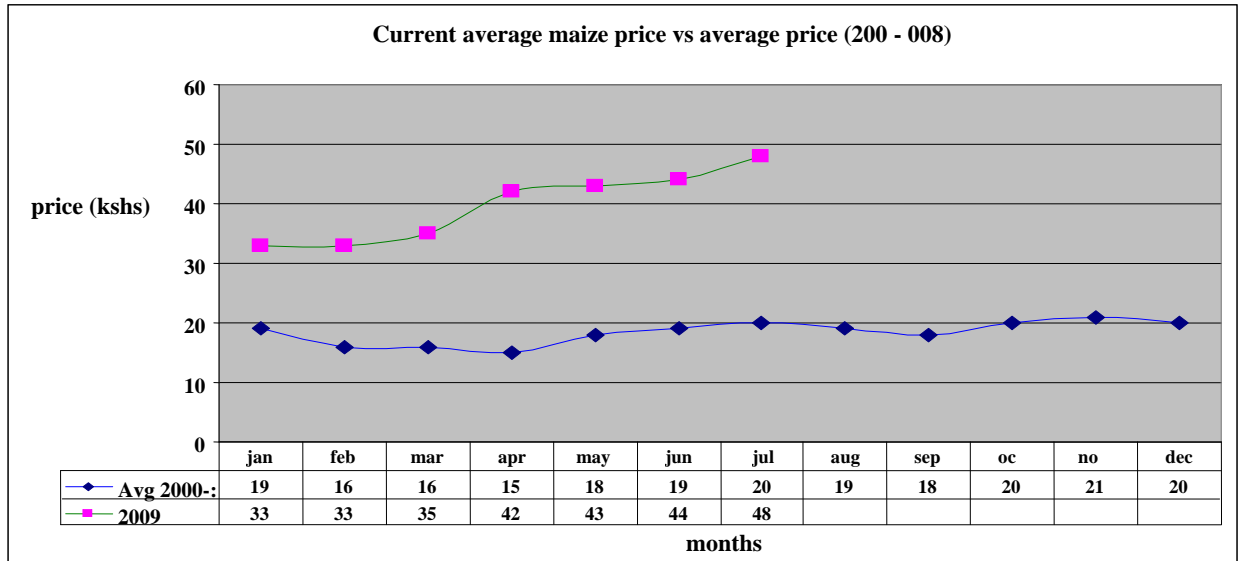
- The volume of livestock sales increased in the month compared to the previous months as a result of availability of external buyers during the month.
- Goats, Sheep, Poultry, donkeys and Cattle were the main livestock offered for sale at the markets.
- Pastoral, Agro-pastoral and Irrigated cropping livelihood zones had the highest sales as they depend on their livestock sales as the sole means of getting household needs while mixed farming livelihood zone had the lowest sales owing to having other sources of income e.g. business, food stock, employment and casual labor e.t.c. to depend on.
- The level of sales is not normal at this time of the year as there were a few buyers during the month.

3.3 Milk consumption

- Milk consumption by household members declined drastically in all the livelihood zones.
- Compared with the previous month the milk consumption at household level decreased owing to the effects of the extended drought period. This had a negative impact on food security at household level, especially for children under five years.

3.4 Crop prices (Market prices)

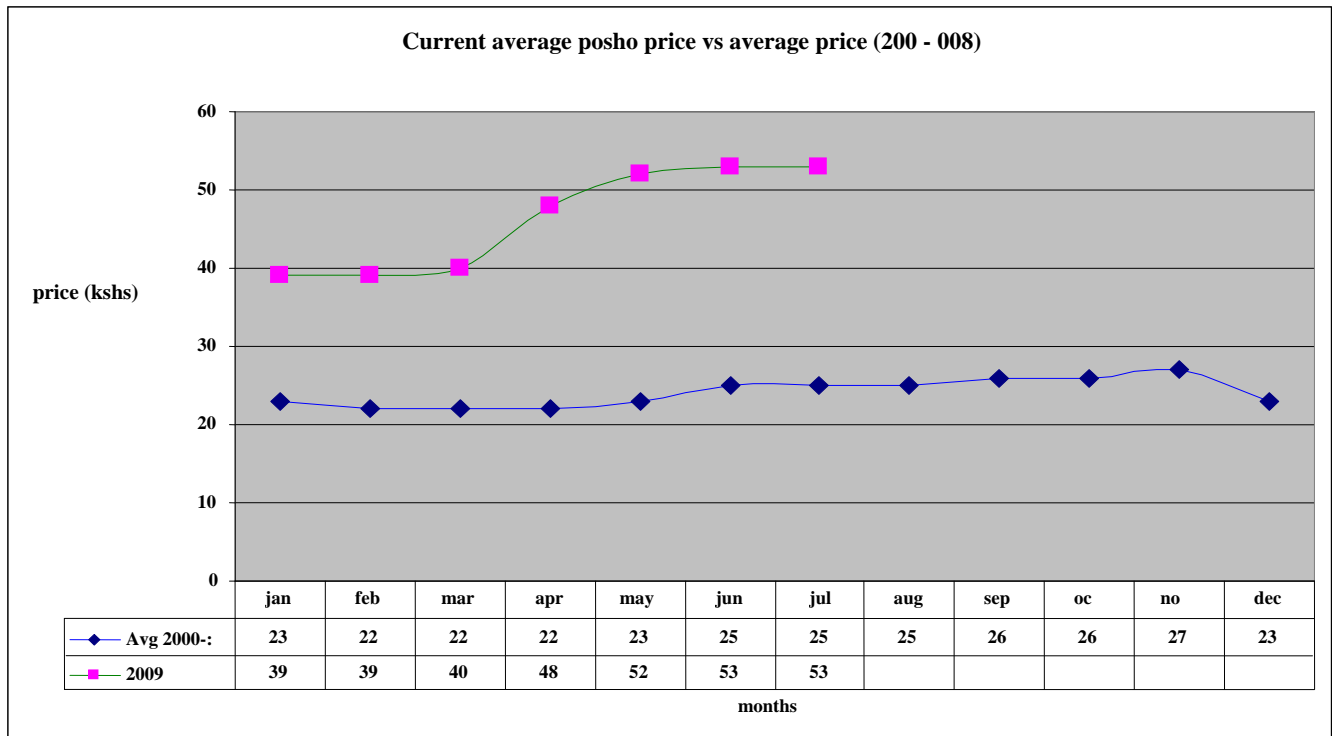
3.4.1 Maize prices



N = 480 HH

- The average maize price during the month was Ksh48, Ksh 4 more than the previous month (highest price in the market was Ksh80 per kg).
- The average price was more than the long term mean by 140 % owing to scarcity of the food at the markets. However, the demand picked up in the markets because of famine stress that affected more of the population in the district.
- Inadequate supply of maize to the local markets from agro-pastoralists within the district and also neighboring districts is the cause of price increase.
- As in the previous month, maize prices were much higher in the pastoral, agro-pastoral and irrigated cropping livelihood zones than in the mixed farming livelihood zone.
- The average maize price was not normal at the time of the year owing to the scarcity of the food in the district.

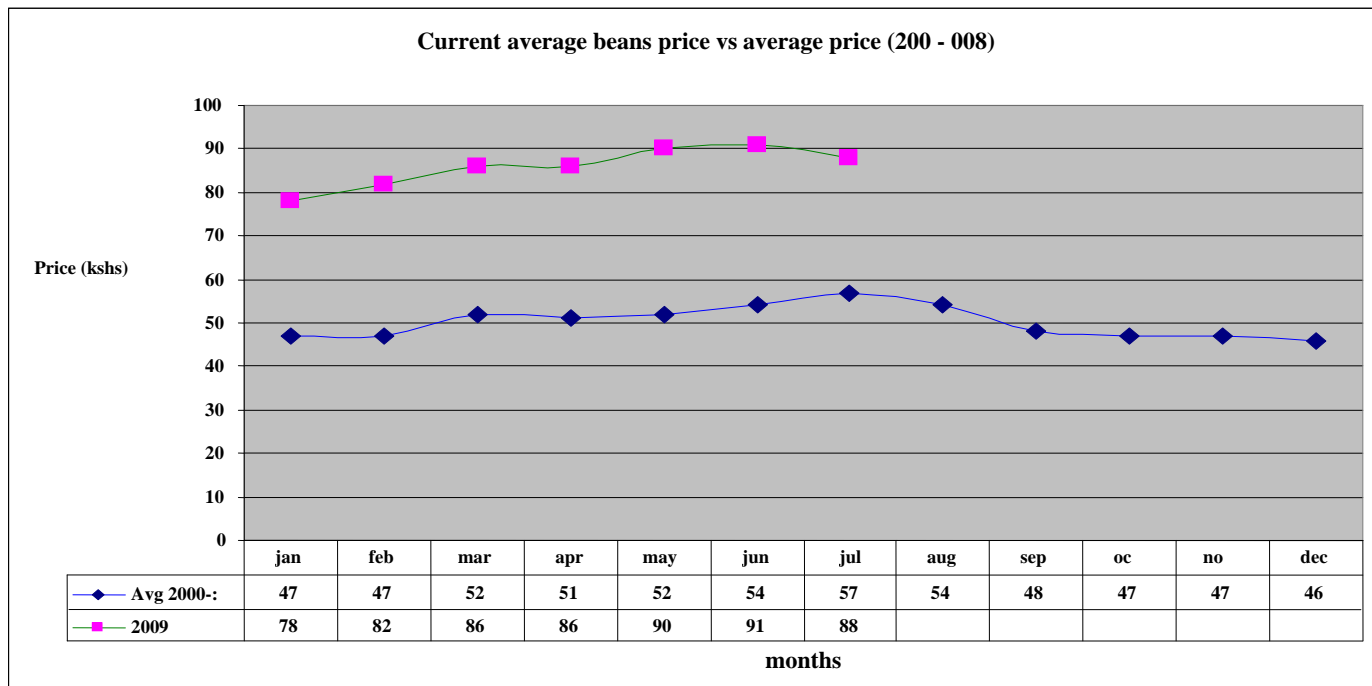
3.1.1 Posho (maize meal) prices



N = 480 HH

- The average price of posho during the month was Ksh53 per kilo, same as that of the previous month (highest price in the market was Ksh80 per kg).
- The average price remained high due to scarcity of the food commodity in to the local markets.
- The price was more than the long term mean by 112 %, this eroded the purchasing power of the pastoralists as they had to sell a lot of animals to meet the food demand.
- Posho prices were much higher in the pastoral, agro-pastoral and Irrigated cropping livelihood zones than in the mixed farming zone because the three zones depended on purchase of the commodity from their local markets which normally was dictated by it's availability unlike the mixed farming who are producers and access it easily.
- The price of posho was not normal at the time of the year owing to scarcity of maize in the markets.

3.4.3 Beans prices



N = 480 HH

- The average price of beans during the month was Ksh 88 per kilo, Ksh 3 less than the previous month.
- The highest price in the market was Ksh120 per kg. The price was more than the long term mean by 54.4 %.
- The average price decreased due to availability of the food commodity in the markets within the district and also from the neighboring districts.
- However, the prices were too high to cope with the purchasing power of the pastoralists, posing a threat to household food security.
- Beans prices were higher in the pastoral livelihood zone than in the irrigated cropping and agro- pastoral zones.
- Beans prices were not normal at the time of the year owing to its erratic availability in the markets.

3.5 Income

3.5.1 Crops income

- Agro-pastoralists reported crop failure in the district due to lack of rainfall.

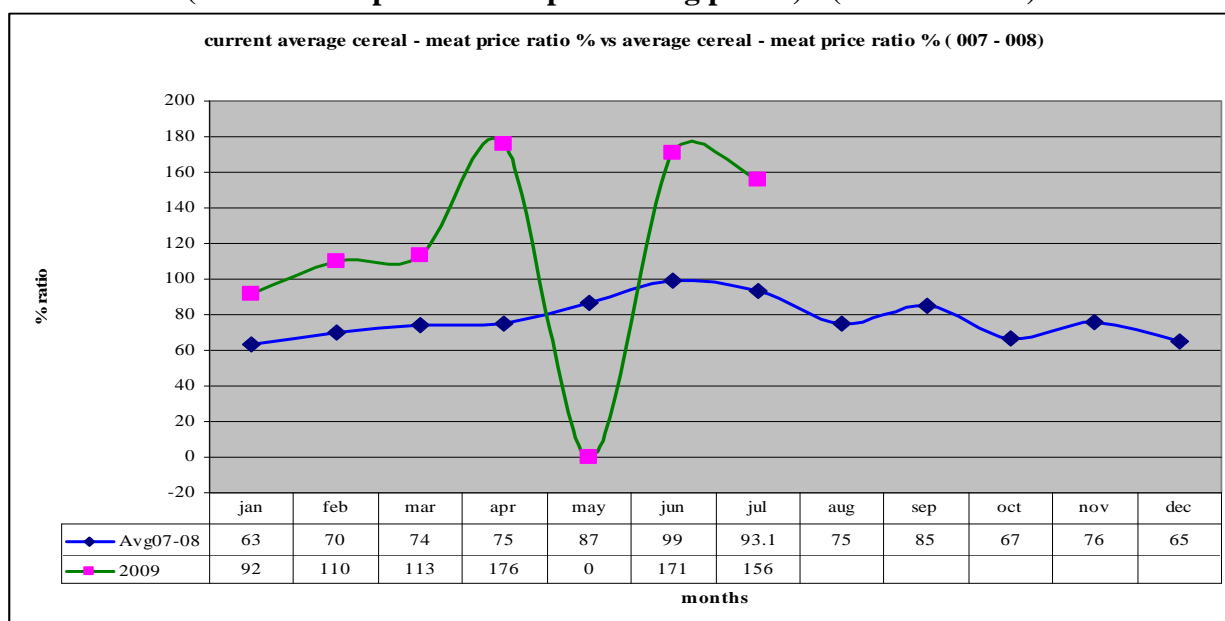
3.5.2 Livestock income

- Livestock income improved compared to the previous month due to fair availability of external buyers during the month who normally purchase large number of animals and offer better prices.
- The income obtained from the livestock was not normal at the time of the year because fewer animals were sold owing to the drought stress.

3.5.3 Other income

- Casual labor was another major source of income during the month with approximately 1/3 of the household's members engaged as casual laborers, followed by sale of fish, sale of charcoal, sale of wood products and petty trade (local beer brewing).
- The average daily wage rate per casual for the month was Ksh108, above that of the previous month, something so meager to meet the daily household's needs.
- Most of the trade in charcoal, wood products and petty trading was recorded in Pastoral, irrigated cropping and Agro-pastoral livelihood zones. This reflects unavailability of livestock and farm incomes for the households in these zones.

3.6 Terms of trade (cereal: meat price ratio – purchasing power) - (market based)



N = 480 HH

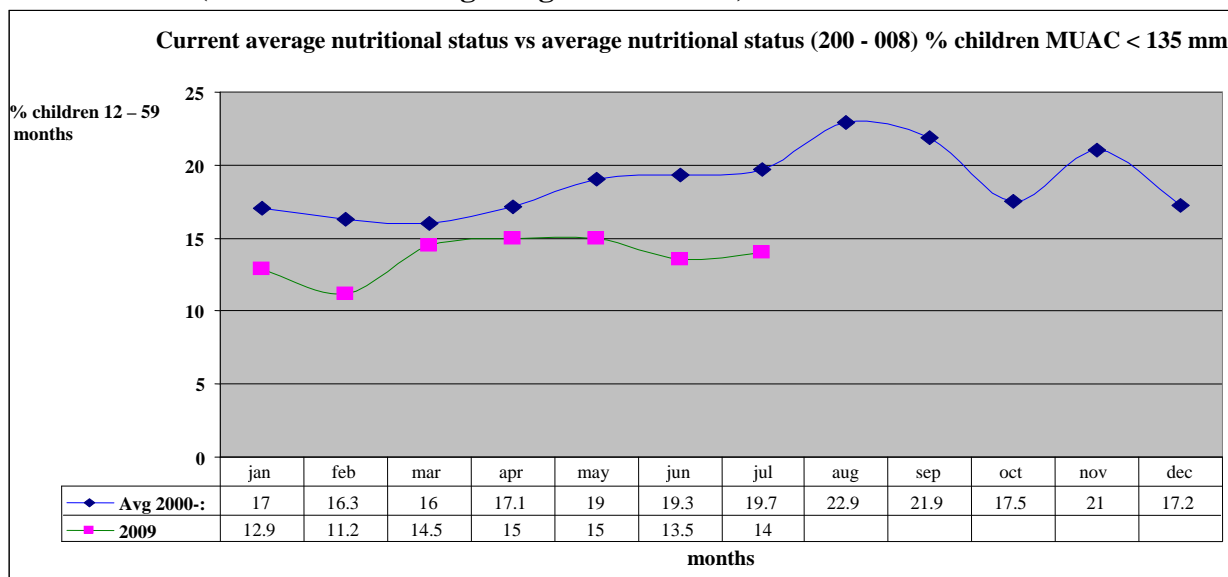
- Terms of trade improved by 8.8 % during the month compared to the previous month.
- The price ratio remained worse in pastoral, agro-pastoral and irrigated cropping livelihood zones because of low prices offered for the livestock compared to high prices of cereals while it was lower in mixed farming livelihood zone owing to fair accessibility of cereals and better livestock prices in this area.
- The cereal: meat price ratio was not normal at the time of the year. For a pastoralist to purchase a 90 kg sack of posho at an average price of Ksh4,800 market price, he/ she had to sell 5 (five) goats for an average of Ksh1000. This sack cannot last for even a month.
- This completely eroded the purchasing power of the people and depleting the asset level of the pastoralists.

3.7 Implications on food security

- The low prices of livestock coupled with the erosion of the peoples' purchasing power in depleted the asset level of the pastoralists through high number of animals sold to purchase foods, hence a threat to the household food security.

4.0 Human welfare indicators (Utilisation of food)

4.1 Nutrition status (children at risk of getting malnutrition)



N = 2,104 children

- The nutrition status of children below five years declined slightly.
- The percentage rated at risk of malnutrition rising from 13.5 % the previous month to 14.0 %.
- This was attributed to inadequate issuance of supplementary food for children at the household level in the EMOP relief food distribution.
- This, however, is likely to worsen as milk production declines due to drought stress.
- Highest rates were recorded in the pastoral, irrigated cropping and agro-pastoral livelihood zones and lowest in mixed-farming livelihood zone.
- The nutrition status was worse at this time of the year.

4.2 Human health

- Malaria reported highest incidences which were severe during the month in the district.
- Enteric fever upsurge reported in Ng'ambo, Endao and Sirata communities (Marigat district) for three months now as a result of consuming dirty river water. Molo and Pekerra rivers are dry at the moment in Ngambo and Sirata areas.

4.3 Flagged areas

- Pastoral, agro-pastoral and irrigated cropping livelihood zones reported the highest malnutrition rates. These areas require particular attention.

5.0 Current interventions

5.1 Non-food interventions

The following programmes were ongoing in the district and meant to mitigate the drought and famine stress.

- Excavation of Apuketin & Kamrio (East pokot), Bukon (Bartabwa division) and Kongelbei (Marigat district) water pans – ALRMP.
- Rehabilitation of Chemorongion (Mochongoi division), Chesesoi & kaptuya (East pokot) and Tibingar (Marigat division) boreholes – ALRMP/ CDF/ AIC.
- Distribution of supplementary food in the project area – ALRMP/ UNICEF.
- Peace building initiatives within the districts' of the project area by various stakeholders i.e. the PSC, DPC, DSC, World Vision, Community Elders, Youth groups, Political leaders, Pastors and ALRMP.

5.2 Food aid

- The EMOP relief food distribution phase 2 commenced in late May 2009 targeting the following number of population in the districts: - East Pokot – 47,423 (GFD), Baringo Central – 3,476 (FFA), Marigat – 13,975 (FFA) and Baringo North – 23,288 (FFA) persons.

5.3 Coping strategies

The coping mechanisms employed by the vulnerable population in all the livelihood zones during the month were;

- Migration of livestock in search of pasture.
- Borrowing food from relatives.
- Reduction in size of meals & skipping some.
- Eating wild foods
- Performing casual labour & petty trade.

This was employed by majority of the sampled households while a few of the households sold their livestock.

Compared to previous months, the situation requires Emergency Operation of relief food distribution.

6.0 Recommendations to DSG and KFSM

- The Veterinary Department / Agencies should step up support to the livestock health sub sector through vaccinations and treatment of clinical cases. In particular, more efforts should be directed to investigate cases of Q-fever in goats in Kinyach (Bartabwa division), cases of CCPP and PPR in Ngoron (Kolowa division), cases of bloody diarrhoea outbreak in goats in Kamrio and Rukus in Nginyang and Tangelbei divisions respectively and Lice infestation outbreak in cattle in Kamrio (Nginyang division); ECF upsurge in Kipkata location (Kipsaraman division) and Kinyach (Bartabwa division); Mange outbreak in Kamrio (Nginyang division).
- The GOK and other aid agencies to put more effort to ensure that communities in East Pokot, North Baringo, Marigat and Baringo central districts are given continuous relief food supplies (GFD) and supplementary food for children until the stress situation normalizes as malnutrition cases are rising, prices of food commodities are rising, animals are dying due to drought effects hence people cannot cope with the stresses, also milk production from animals declined drastically due to the drought effects that has persisted for a long period.
- There is need to strengthen conflict prevention and peace building initiatives to maintain the already achieved level of peace and further reduce it to the lowest level along the

borders of East Pokot, Baringo, Marakwet, Turkana, Laikipia west and Samburu districts to enhance peaceful co-existence.

- The MOH should make efforts to supply more anti-malarial drugs in all the rural health facilities that are far from the district hospitals to cope with Malaria upsurge at the moment and investigate cases of Enteric fever upsurge in Ng'ambo, Endao and Sirata communities in Marigat district.
- The District Game Warden to put more efforts to ensure that Baboons, Hyenas and Lynx predated on goats in Sirata (Mikutani division), Kositei location (Nginyang division), Barpello (Kolowa division), Chemintany (Bartabwa division), Rukus (Tangulbei division) and Kaptuya (Churo division) and elephants destroying farms in Kaptuya (Churo division) are contained to save the pastoralists and farmers who are losing their animals and crops daily.