

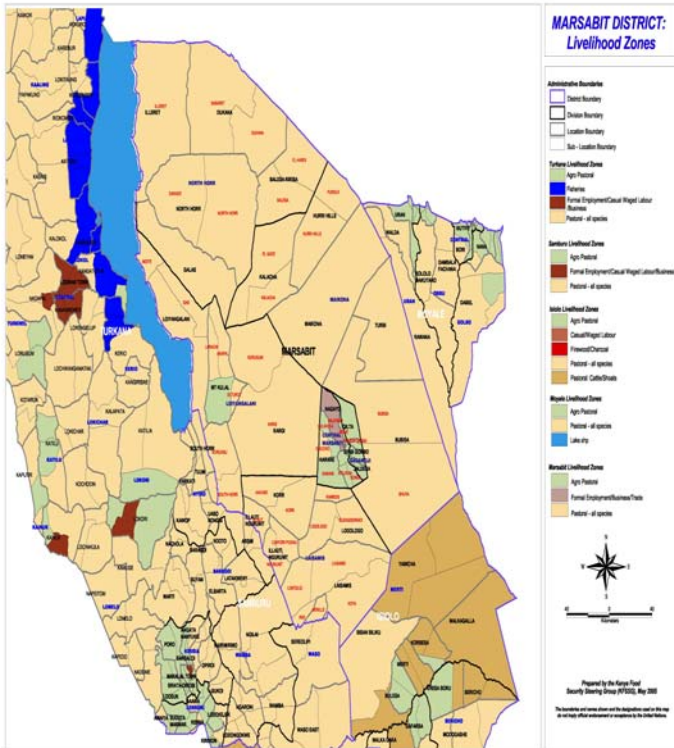


OFFICE OF THE PRIME MINISTER
MINISTRY OF STATE FOR THE DEVELOPMENT OF NORTHERN KENYA AND OTHER ARID LANDS
ARID LANDS RESOURCE MANAGEMENT PROJECT II

DROUGHT MONITORING BULLETIN, JULY 2009

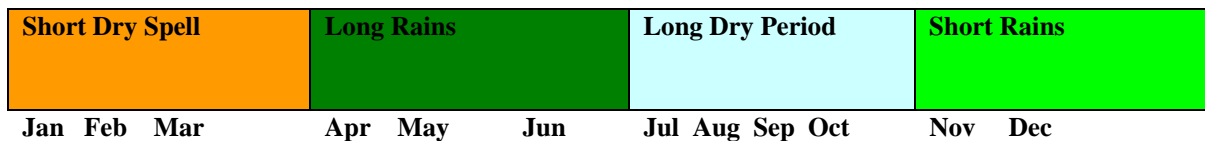
Marsabit, Laisamis and Chalbi Districts

Warning Stages



Livelihood zone	Warning Stage	Trend
Agro-Pastoralist	Alarm	Worsening
Pastoral-All species	Emergency	No change
Fishermen/Pastoralist	Emergency	No change

Seasonal Calendar



Situation overview

- Dry weather condition prevailed, leading to collapse in rural economy and social welfare indicators in all three main livelihoods across the greater Marsabit district.
- The quality of forage was poor and depleted in most parts of the district, resulting in heavy livestock concentrations in few areas that recorded twenty to thirty five percent (minimal) average of three days showers from the failed season.
- Existing water sources both in lowlands and highlands registered significant low yields particularly in boreholes, traditional wells, Lake Turkana and the few natural springs that represent the permanent sources in the largely water scarce region. All seasonal sources experienced diminished yields.
- Depletion of forage around permanent water sources resulted in increased distances to and from pasture. The average distance was 30-60km.
- As a result of severe water stress, cattle in Maikona division stayed without water for up to eight to nine days (from usual 3-4days), and shoats for (12) twelve days from four to five days.
- Body conditions of all livestock species deteriorated to an extent of increasing mortality rates among shoats, cattle and few donkeys' species, especially among lactating and new-borns.
- Cattle price averages decreased by 30% compared to long term mean averages of 2000 to 2008 while shoats' prices also declined as a result of deteriorating body conditions and depressed sales rates at terminal markets.
- Diminished milk production was reported in greater Marsabit district due to failed rains and migration that kept livestock away from their homesteads.
- EMOP relief allocation continued in all 97 food distributing centres of six divisions targeting 52% of the neediest households in greater Marsabit district. The general view is that the targeting is inadequate and household hunger remains a serious challenge.
- Malaria, diarrhoea and upper respiratory tract infections (URTI) continued to be the major ailments reported across the district.
- Cases of insecurity in the form of raids, tribal clashes on resources and human killings continued to be reported in some areas, including Marsabit central district, Laisamis and Korr divisions of Marsabit South district.
- Due to prolonged drought stress in most areas, livestock migration is bound to increase in spite of resource conflicts that are expected to occur.
- The nutrition status of children below five years declined during the month, with the percentage of those rated at risk of malnutrition rising to 26.1% from 23.5% in June.

Current interventions

- District-wide (EMOP) general relief food distribution was conducted, targeting 80,452 direct beneficiaries out of the current population of approximately one 160,747 in greater Marsabit district.
- Supplementary feeding programs continued at 24 health centres in all divisions targeting approximately 3,860 beneficiaries among severe malnourished children < 5years, lactating and pregnant mothers- MOH/FH.

- Water trucking continued on Mt Marsabit, Hurri hills, El Hade, Torbi, Namarei and Farhakoren among other water stressed parts of greater Marsabit district.
- Three days inter and intra peace initiative was conducted in Maikona division head quarters of Marsabit south district with Gabra, Rendille, Borana communities and the neighboring Ethiopian –Pastoralist Shade Initiative (PSI)
- A 10-day Long Rains Assessment was conducted- KFSSG/DSG.

Recommendations to DSG and KFSM

- Close monitoring of food security situation in the coming months with a view of mitigating adverse effects on household food access. Appropriate interventions should be prioritised in livestock and water sectors to avert possible loss of lives and livelihoods.
- Scale up EMOP relief food aid to cover eighty percent of the neediest households in greater Marsabit district to curb the prevailing food insecurity situation.
- Scale up supplementary (therapeutics) feeding with dry feeding centres from the current 3,860, (< 5 years children, lactating and pregnant and the aged in 24 centres to 7,000 including the HIV patients in the community dispensaries and the district health facility. Comparatively, Loiyangalani division which has been experiencing consistent malnutrition rates from 52.7% percent in previous month to 68% need wet feeding and increase number of beneficiaries to intervene the situation as a short term measure to avert the emergency situation.
- GoK relief food should be consistently continued to subsidise the emergency food insecurity situation in Marsabit district, targeting 15% to 40%.
- De-stocking programme should be implemented to avert or minimise increasing mortality rates among shoats, cattle and donkey species to rescue the diminishing herd sizes in greater Marsabit district.
- Provision of fuel subsidy for community boreholes and water trucking to communities, institutions on Mt. Marsabit in Marsabit central district, Hurri hills, Torbi, El Hadi in Marsabit north, Namarei, Manyatta Lengima, Afharen in Marsabit south district - MOW,ALRMP, CDF,PISP.
- Livestock sector should initiate de-worming and vaccination campaigns.
- Fostering of peace should be encouraged within and without district borders as livestock movement are increasing beyond their normal dry season grazing areas.
- Immediate implementation of the Long Rains Assessment (LRA) Team report is critical for the greater Marsabit district interventions and recommendations.
- Sensitisation of the pastoralist community on the national census exercise especially because the prolonged drought has forced them beyond their administrative boundaries in Samburu, Isiolo and Wajir west districts and to neighboring country of Ethiopia.
- Promote rain water harvesting techniques.
- Provision of seven water bowsers to minimise water stresses in greater Marsabit district.

1.0 Environmental indicators (Stability)

1.1 Rainfall

- The onset of the long rains in the district was characterised by a delay of between two and four weeks, was erratic and poorly distributed both in time and space and ended earlier than normal (second week of May). In the agro-pastoral zones of central and Gadamoji divisions, the rains came two weeks late (first week of April 2009) and were erratic and poorly distributed. The amount received in the season was 10 – 20% of normal, suggesting a failure.
- However, there was no rainfall reported in any part of greater Marsabit district, hence drought stress continues to bite.

1.2 Condition of natural vegetation and pasture

- The quality and quantity of forage remained dry, scarce and depleted in most parts of larger Marsabit district. Laisamis division in Marsabit south district was the most affected due to rainfall failure in the previous four seasons.
- Similarly, forage scarcity and depleted pasture availability is expected to sustain livestock not beyond mid August, and if no off season rainfall is received, the situation could be disastrous.
- The few and isolated areas with pasture faced water scarcity, therefore Marsabit north and south districts experienced heavy livestock concentration within and without their administrative districts. For instance, livestock from Korr, Ngurunit, Farakoren and other parts of Laisamis division migrated to Samburu district in search of pasture but was affected by insecurity.

1.3 Water sources and availability

1.3.1 Use of water sources

- The main sources of water for both livestock and domestic use failed to recharge in low and highland areas leading to severe water stress in hilly parts i.e. Mt Marsabit in Marsabit central district, Hurri hills, Maikona and Torbi division of Marsabit north district and Namarei, Farakoren and Manyatta lengima in Laisamis division of Marsabit south district leading to trucking.
- The existing water sources in both low and highlands parts were boreholes, traditional wells, springs, shallow wells, the Lake Turkana, while all seasonal ones got depleted.
- Severe water stress was experienced in Torbi division where cattle watered after nine days from 4 days and shoats go for 12 days from 4- 5 days compared to the seasonal norm.

1.3.2 Distances (kms) to water sources

- Average distances to domestic water sources increased significantly from an average of 8 kms the previous month to 18 kms while for livestock use increased from twenty two kms to 55kms. This as an indication of a notable increase in distances (livestock use) between water and pasture at 24kms compared to the long term mean coverage.
- Water shortage was an emergency situation at Hurri hills and its surroundings (distances averaging 60 to 70 kms in Marsabit North district while for Namarei, Arge, Afharen, Koom and Ngurunit location of Marsabit south district averaging 27 to 35 kms, and Marsabit central district averaging 33 kms.

- Generally, livestock water stress in larger Marsabit district is expected to worsen come end of August. The increasing distances to water sources for livestock use was a negative indication that livestock was weakening and vulnerable, leading to increased mortalities. Some livestock mortalities, especially among shoats' species, were already reported in many areas including, Ngurunit, Farakoren, Afharen in Marsabit south district and Torbi, Bubisa of Marsabit North district while a few deaths among lactating cattle species were reported in Marsabit Central district.

1.4 Emerging issues

1.4.1 Insecurity/conflict

- The security situation fairly improved in Marsabit north district as well as in most parts of both Marsabit south and central districts. This was evident as fewer livestock raids, tribal clashes and killing of human were reported compared to similar time since 2005.
- However, three livestock raids were reported in Laisamis division of Marsabit south district. In Central and Gadhamoji divisions most stolen livestock were recovered with the effort of district security committee and community co-operation.
- Similarly, isolated and cross-border resource conflicts were reported in Samburu district where livestock from Korr and other parts of Laisamis division migrated to.

1.4.2 Migration

a) Livestock migration

- Failure of the long rains occasioned an early and outward migration of over 90 percent of all livestock species in the last two months. In the pastoral livelihood of Marsabit south district, livestock from Laisamis and Korr divisions migrated to Baragoi in Samburu district and Koom in Isiolo district, while those from Kargi and Loiyangalani division moved towards Moite of Loiyangalani division and Sibiloi National Park around Illeret location of Marsabit north district.
- In the pastoral livelihood of North Horr division, livestock was concentrated in the north of Dukana along Ethiopian border and Sibiloi national park while those from Maikona division moved to Hurri hills and towards Arbijaan in Wajir west district.
- Livestock from Agro-pastoral livelihood of Marsabit central and Gadamoji divisions were transported to Moyale district and others to Arbijaan in Wajir west district where there was some pasture. The heavy livestock migrations in search of water and pasture led to congestion and this made the animals vulnerable to diseases and will soon attribute to depletion of resources.
- In some parts of pastoral livelihood zone of Laisamis division (Ngurunit, Illaut and Mayatta Lengima), Maikona division (Bubisa, Torbi and Shurra) lack of pasture for livestock led residents resort to digging tubers and collecting acacia pods and feed the 10% of lactating stocks left at homesteads.

b) Human migration/ displacement

- Human displacement remained minimal in most areas thus being within normal situation of the year.

- A number of household migrations were reported from North Horr to Dukana area as a coping strategy for heightened drought spell.

1.5 Implications on food security

- The prolonged dry period negatively affected the pastoral livelihood, resulting in households from North Horr division migrate to Dukana division following their livestock as an alternative/coping strategy to avert the disastrous food situation at household level.
- Depleted milk availability at household level has consequently compounded food insecurity among pastoral households to remarkable level.
- The failed long rainy season continues to frustrate efforts to attain a food secure society in the (Pastoral/ fishermen livelihood zones) as the most affected areas of the greater Marsabit district.
- The hiking food commodities prices by one hundred to one hundred fifty percent compared to similar time of the long term averages has aggravated the food insecurity situation across the district.
- Inadequate beneficiaries (fifty two %) targeted in the (EMOP) general relief food has negatively affected food security situation at household level.
- Perennial water scarcity

2.0 Rural economy indicators (Food availability)

2.1 Livestock production

2.1.1 Livestock body condition

- Body conditions in both Agro/ Pastoral and pastoral livelihood zones are poor and emaciated for cattle and shoats while it's good to fair for camel. The poor body condition is attributed to long trekking distances in search of water and pasture. The lactating shoats and cattle are emaciated and dying. Generally, the deteriorating body condition among shoats and cattle are likely to lead to high mortalities between mid to end August.
- Distances to pastures and water are increasing across all livelihood zones with the average distances estimated between 40 to 70 kms for all species. In Laisamis division, distance to water sources was estimated at 22 kms. As a result, shoats were watered after seven days and after five days compared to normal of two to three days respectively.
- In Maikona division, the average trekking distance averaged 85 kms with the most affected areas being Burgabo, Bubisa, and Torbi and watering interval for shoats 12 days and 9 days for cattle compared to a normal of three to four days respectively. In the Agro- pastoral livelihood zone of Marsabit central and Gadamoji divisions average distances were at an average of 50kms and watering interval for cattle and shoats has increased to five to seven days compared to normal of two days.

2.1.2 Livestock diseases

- Contagious Caprine Pleuro –pneumonia (CCPP) and worm infestation became endemic among shoats and few cases of Contagious Bovine Pleuro Pneumonia (CBPP) were reported in the grater district and remained a threat to livestock production.

- Livestock deaths were reported with cattle and shoats being the most affected. The most affected areas were in the pastoral livelihood zones of Ngurunit in Marsabit south district and Burgabo, Torbi and Bubisa areas of Marsabit north district.
- In Marsabit north, as in most parts of greater Marsabit district, it was estimated that 24 percent shoats and 10 percent cattle succumbed while in the agro- pastoral livelihood zone of central and Gadamoji division, shoats and cattle mortalities were estimated at 10 percent. The situation deteriorated and it is estimated that most of the cattle and shoats will succumb before the onset of the next season unless the livestock are moved to other areas with pastures and water.

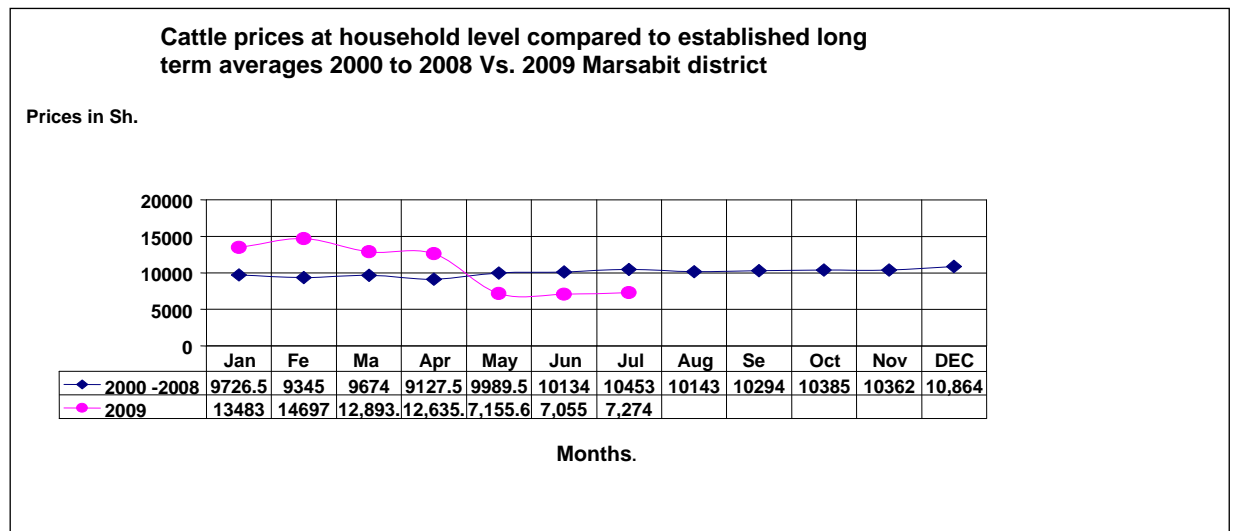
2.2 Implication on food security

- The food security situation worsened further with failure of long rains season as livestock concentration was far away from their homesteads for over seven previous months.
- Decreasing livestock prices as a result of poor body condition led to collapse of prices in terminal market, negatively affecting food security situation at household level, especially among pastoralist and fisher folk community.
- Despite this, fisher folk, pastoral livelihood and pastoralist agro/pastoralist households were at emergency stage of the drought cycle.
- Insecurity due to resource-based ethnic animosity compelled the residents not to utilise some rangelands.

3.0 Access to food

3.1 Livestock marketing

3.1.1 Cattle prices

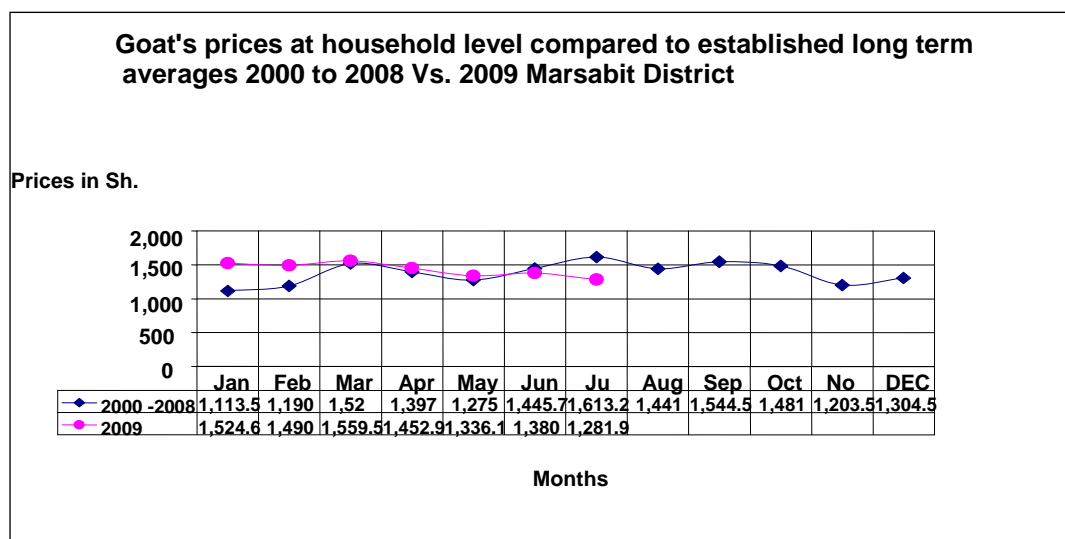


N =360 Households

- Despite a slight increase in cattle prices compared to last month, prices remained below normal by 30 percent compared to long term average prices.
- This decrease could be linked to the poor body condition and the collapsing prices at national markets.

- The average price was Ksh7,274, down from 7,055 in June.
- Sales rates increased by 38% compared to similar time of the years as a result of deteriorating body condition hence a marginal downswing in prices by 30%.
- During the month under review, Maikona division in Marsabit north district (pastoralist Lv.) recorded the highest prices at Ksh 8,080 from 10,000 the previous month followed by Central division in Marsabit central district of (Agro/Pastoralist Lv.) at Ksh7,742.10 from Ksh6,164.70 and Laisamis division of Marsabit south district (Pastoralist Lv.) had the least at Ksh6,000 from Ksh 5,000.
- Generally, cattle prices were expected to decrease further with prolonged drought period, which affected the body condition as pasture and water availability became gets scarce.

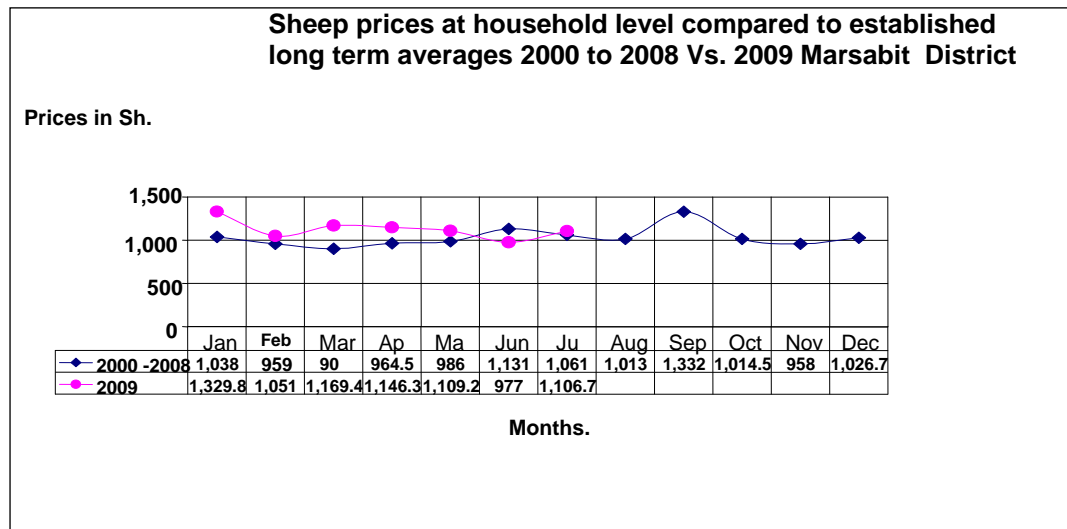
3.1.2 Goats prices



N =360 Households

- Goat prices at household level dropped by 27.5 percent compared to the long term averages.
- The price drop was attributed to deteriorating body conditions and collapsing prices at national market. The prices are expected to decrease further with prolonged drought situation.
- During the month, higher goat prices were recorded in Laisamis division of pastoralist livelihood zone of Marsabit South district at Ksh 1,744, Maikona division (Pastoral livelihood) at Ksh1, 350 and Loiyangalani of Fishermen/ pastoral zone has the least at Ksh 925. These differences could be linked with limited access to markets in many lowland areas and deteriorated body condition.

3.1.3 Sheep prices



N =360 Households

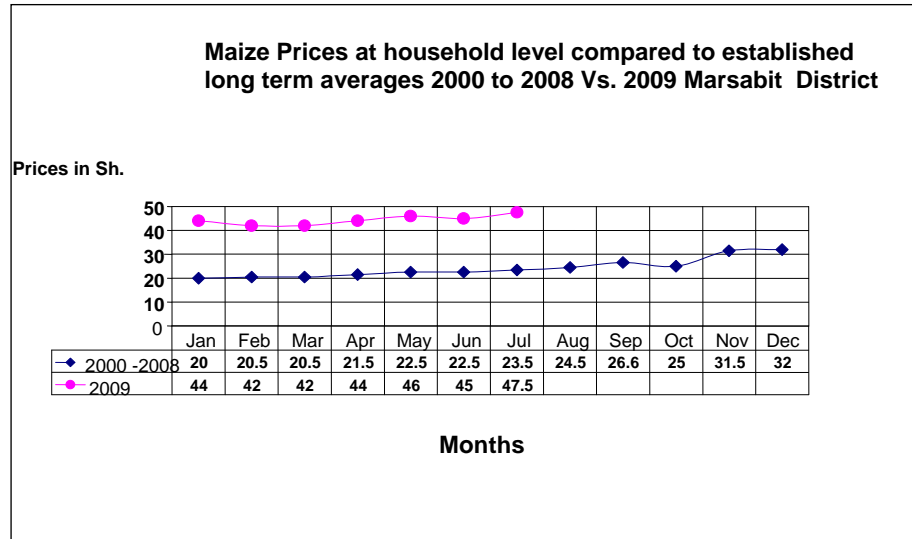
- Sheep prices rose from Ksh977 the previous month to Ksh1,106.70.
- Higher sheep prices were recorded at Maikona division (pastoral livelihood) of Marsabit north district at Ksh1,1,300 followed by Laisamis division of Marsabit South district (pastoralist livelihood) at Ksh1, 296.70 while North Horr division had the least at Ksh 755.
- Sales rate reduced by 26% compared to similar time of the previous three years. The sales are expected to reduce further due to drought and collapsing prices in markets.

3.2 Milk consumption

- No milk was available in the greater Marsabit district. This abnormality was attributed to prolonged drought situation, which resulted to deteriorated livestock body condition. The availability was also affected by livestock concentration in far places due to drought stress.
- With depleted milk availability, especially among pastoralist households in the greater Marsabit district, malnutrition rates are bound to rise.

3.3 Crop prices

3.3.1 Maize prices



N =348 households

- Maize prices at household level increased slightly compared to the previous month.
- The average price was Ksh 47.5 per kilo compared to Ksh45 in June.
- The price was too high compared to the long term average for the years 2000 to 2008.
- The high prices were attributed to poor rainfall performance in the previous two seasons. These reflected the collapsing cereal:meat ratio and hence threatened the purchasing power of pastoralist livelihoods.
- Higher maize prices were recorded in Loiyangalani division of fisher folk livelihood (Marsabit south) at Ksh 55 per kilo, Laisamis division of pastoral (Marsabit south) at Ksh450. The agro/pastoral livelihood community on Mt. Marsabit in Central and Gadhamoji divisions of Marsabit central district recorded the lowest prices at Ksh 35.
- Maize prices are expected to remain high due to poor performance of the failed long rains season.

3.4 Income

3.4.1 Livestock income

- Sale of livestock remained the leading source of income as was reported by 87 out of 360 sampled households (24.8%) especially among pastoralist households.
- Livestock sales decreased by 47 percent compared to similar time of years 2005 to 2009, especially among shoa species.
- Milk production diminished across the district, bearing a negative impact on household food situation.
- Nonetheless, livestock income and productivity collapsed hence its' expected to worsen further given the ongoing drought.

3.4.2 Other income

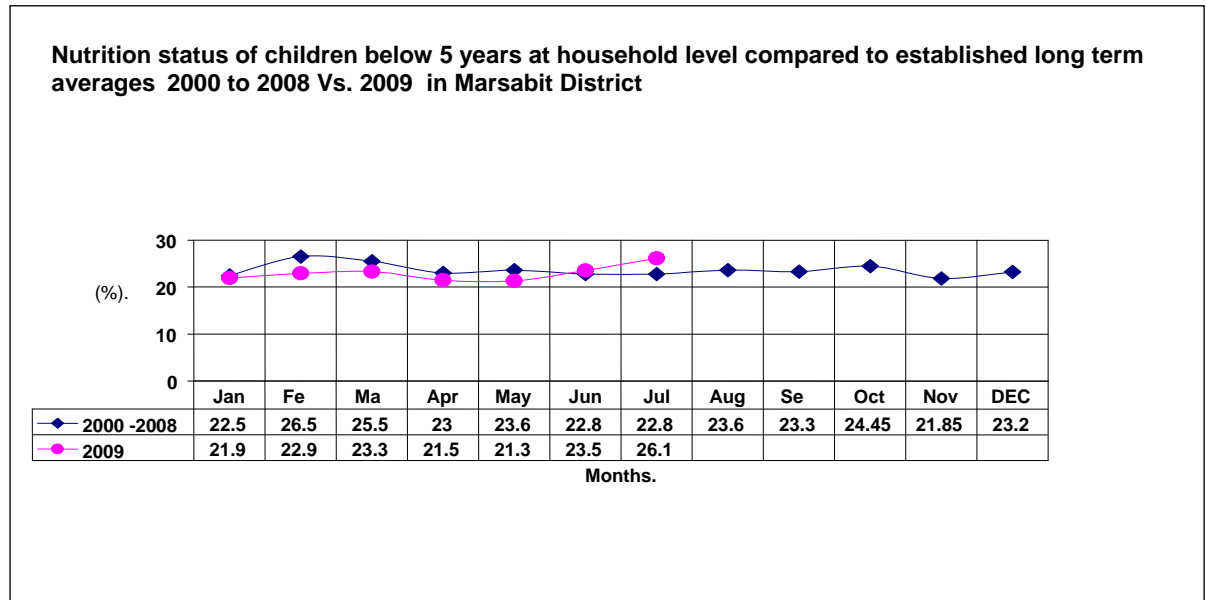
- Other income sources include casual labor where 12% of sampled households stating so, few others reporting sale of charcoal, sales of Khat (Miraa), formal employment between Ksh200 to 700 per day and engaging in degrading jobs fetch between Ksh40 to 195 per day.
- Comparatively, the price of a piece of fish increased by 2% compared to previous three years.

3.5 Implications on food security

- Consistently increasing food prices throughout the previous year to current year impacted negatively on food situation and terms of trade in all three main livelihoods.
- Increasing livestock movement to far dry season grazing areas also affected food situation, especially among pastoralist livelihood.
- Failure of the long rains season threatened food security situation in the greater Marsabit district. Consequently, in some pastoral and fishermen communities reporting serious food scarcity leading to starvation including Loiyangalani, North Horr, Ngurunit and Korr. These allegations were widespread but not easy to verify. However, there were serious indications that unless urgent measures are taken to avert famine, there might be mass starvation in many parts of the larger Marsabit district.

4.0 Welfare indicators (Utilisation of food)

4.1 Nutrition status



N=1250 children

- The nutrition status of children below five years declined during the month.
- The percentage of those rated at risk of malnutrition rose to 26.1% from 23.5% in June.
- 1,250 children were sampled, 645 girls and 605 boys. The decline was attributed to lack of milk and deteriorating food security situation at household level.

- Comparatively, higher rates were recorded in Loiyangalani division of fisher folk livelihoods in Marsabit South district at 68.0% from 52.7% the previous month, Central division in Marsabit central district of Agro/pastoral livelihood had the lowest rate at 20.8%.
- The status is expected to decline further due to prolonged drought stress in greater Marsabit district.

4.2 Human health

- The leading causes of morbidity for the general population in the greater Marsabit district were malaria, acute respiration infections, diarrhea among children below five years and few adults.
- Comparatively, diarrhea cases increased by 200 percent compared to similar time of 2008.
- The previous cholera outbreak at Laisamis division in Marsabit south district which had resulted in six deaths and 221 patients hospitalised was put under control and measures put in place to improve sanitation in the affected areas.
- Human health was affected by lack of food.

5.0 Current interventions

5.1 Non-food interventions

- Water trucking to communities and schools in Central, Burgabo, Torbi, Namarei, Farakoren and Hurri hills by Arid Lands Resource Mgt Project, Ministry of Water and irrigation and Wild life services.
- Repair works on community boreholes in Burgabo, Kubi Qalo, Namarei, Gobbore, and Dirib Gombo – NWSB, ALRMP.
- Water trucking done on Mt. Marsabit, Turbi, Burgabo, Namarei, Hurri hills- ALRMP, Water, PISP and CDF.
- Provision of fuel to all community boreholes and other community water schemes –ALRMP/M.o.Water and Irrigation.
- Drilling of a new borehole in Burgabo of Maikona division in Marsabit north district by Northern Kenya Water Service Board.
- Provision of hay to community on Mt. Marsabit- ALRMP/II.

5.2 Food aid

- Supplementary feeding program (SFP) in 18 out of 24 health centres in larger Marsabit district targeting 1,356 direct beneficiaries among severely malnourished children, pregnant and lactating mothers was undertaken. Ministry of Health and Food for Hungry.
- 52 percent of the direct neediest beneficiaries (80,442) of the total population are under emergency relief operation program. Kenya Red Cross Society (KRCS).
- GoK relief allocation was not received in the previous three in any part of greater Marsabit district.

5.3 Coping strategies

The coping strategies among households include;

- Increased number of households skipping meals, sharing of relief food and purchasing food on credit were reported across all the three main livelihoods and an indication of a serious situation compared to similar period last year.
- The Agro/pastoral livelihood zone reported increased sales of firewood/charcoal to urban dwellers and search of labor.
- Slaughter of all new-born calves was reported in pastoral livelihood to save the lactating stock .

6.0 Recommendations to DSG and KFSM

- Close monitoring of food security situation in the coming months with a view of mitigating adverse effects on household food access. Appropriate interventions should be prioritised in livestock and water sectors to avert possible loss of lives and livelihoods.
- Scale up EMOP relief food aid to cover eighty percent of the neediest households in greater Marsabit district to curb the prevailing food insecurity situation.
- Scale up supplementary (therapeutics) feeding with dry feeding centres from the current 3,860, (< 5 years children, lactating and pregnant and the aged in 24 centres to 7,000 including the HIV patients in the community dispensaries and the district health facility. Comparatively, Loiyangalani division which has been experiencing consistent malnutrition rates from 52.7% percent in previous month to 68% need wet feeding and increase number of beneficiaries to intervene the situation as a short term measure to avert the emergency situation.
- GoK relief food should be consistently continued to subsidise the emergency food insecurity situation in Marsabit district, targeting 15% to 40%.
- Provision of fuel subsidy for community boreholes and water trucking to communities, institutions on Mt. Marsabit in Marsabit central district, Hurri hills, Torbi, El Hadi in Marsabit north, Namarei, Manyatta Lengima, Afharen in Marsabit south district - MOW,ALRMP, CDF,PISP.
- Livestock sector should initiate de-worming and vaccination campaigns.
- Fostering of peace should be encouraged within and without district borders as livestock movement are increasing beyond their normal dry season grazing areas.
- Immediate implementation of the Long Rains Assessment (LRA) Team report is critical for the greater Marsabit district interventions and recommendations.
- Sensitisation of the pastoralist community on the national census exercise especially because the prolonged drought has forced them beyond their administrative boundaries in Samburu, Isiolo and Wajir west districts and to neighboring country of Ethiopia.
- Promote rain water harvesting techniques.
- Provision of seven water bowsers to minimise water stresses in greater Marsabit district. **Action- WFP, KFSSG, ALRMPII and other DAs**
- Continuous disease surveillance should be emphasized in order to contain disease outbreaks especially PPR, CCBP, CCPP and Anthrax incidence to areas where livestock are currently affected or concentrated.
- De-stocking program should be initiated to help pastoralist recoup some losses due to prevailing drought situation will lead to massive losses of livestock.
- Provision of hay and other livestock feeds for the 10% of lactating stock in greater Marsabit district.

- Support the Loiyangalani, El-Molo and Illeret communities with fishing gears through credit provision and promote national and international fish market.
- Construction and equipping of health facilities and recruitment of personnel's.
- Need for posting of more medical personnel's to community dispensaries and health sectors in greater Marsabit district.
- Fostering of peace should be encouraged within and without district boundaries.
- Cross-border peace meetings should be emphasised by all stakeholders to enable free movements of livestock with prolonged drought period. – **PAS, Community and other stakeholders.**