

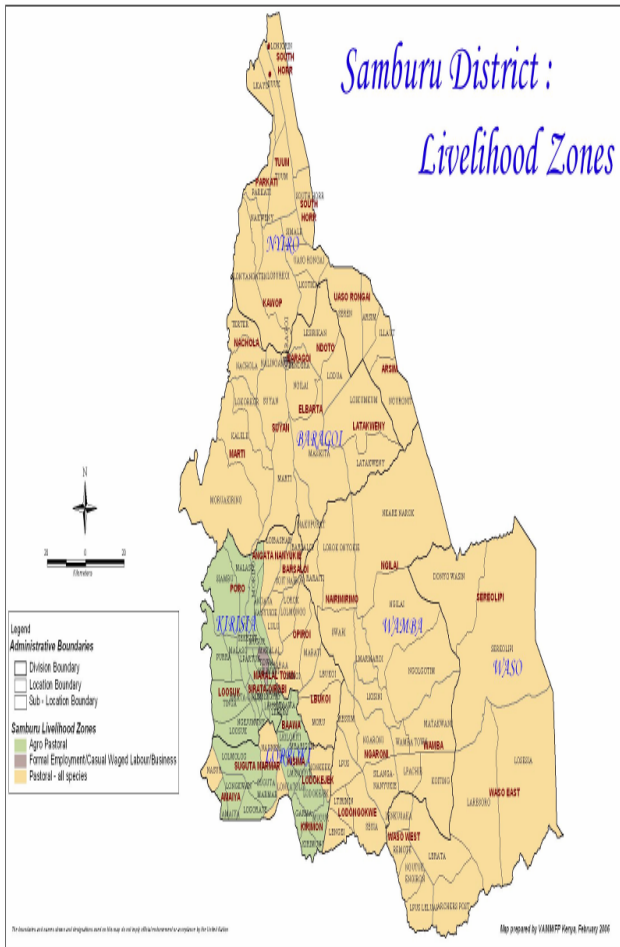


**OFFICE OF THE PRIME MINISTER
MINISTRY OF STATE FOR THE DEVELOPMENT OF NORTHERN KENYA AND OTHER ARID LANDS
ARID LANDS RESOURCE MANAGEMENT PROJECT II**

DROUGHT MONTHLY BULLETIN, JULY 2009

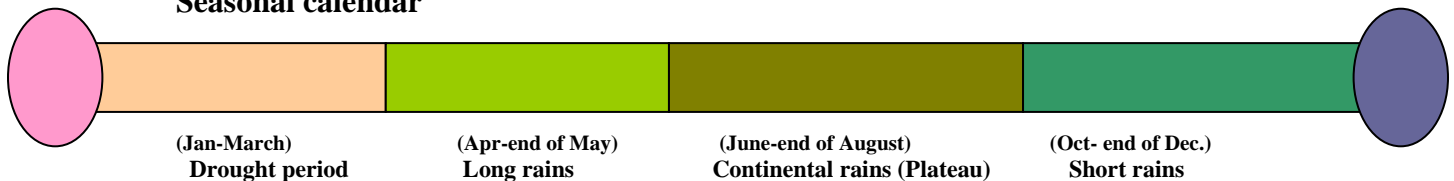
Samburu District

Warning Stages



Livelihood Zone	Warning stage	Trend
Pastoral-all Species	Emergency	No change
Agro pastoral	Emergency	No change
District	Emergency	No change

Seasonal calendar



Situation overview

- On average the district received 2.3mm of rainfall compared to 5.3 mm received in June. The amount was 88.5 per cent below the long-term mean average of 19.3 mm. Drought stress bit hard across the district due to below normal performance of five consecutive rain seasons from the 2007 short rains season.
- Existing water sources dried up due to enhanced rates of evaporation, leading to increased distances to water points by households and livestock.
- Livestock body conditions ranged from fair to poor and prices fall substantially compared to June.
- Milk availability remained scarce at the household level across the district.
- Malaria and upper respiratory tract infections continue to dominate the district human disease profile, but within manageable levels. Cases of cholera outbreak were reported in parts of Baragoi and Nyiro divisions.
- Below normal livestock prices and hiked prices of essential food commodities eroded pastoralists' purchasing power and hence enhanced food insecurity at the household level.
- Insecurity continued to destabilise the western borders of the district, constraining access to forage resources and human settlement in the affected areas.
- The nutrition status of children below five years worsened during the month, with the percentage of those considered at risk of malnutrition (based on MUAC<135mm measurement) increasing to 31.4 from 30.0 last month.

Current interventions

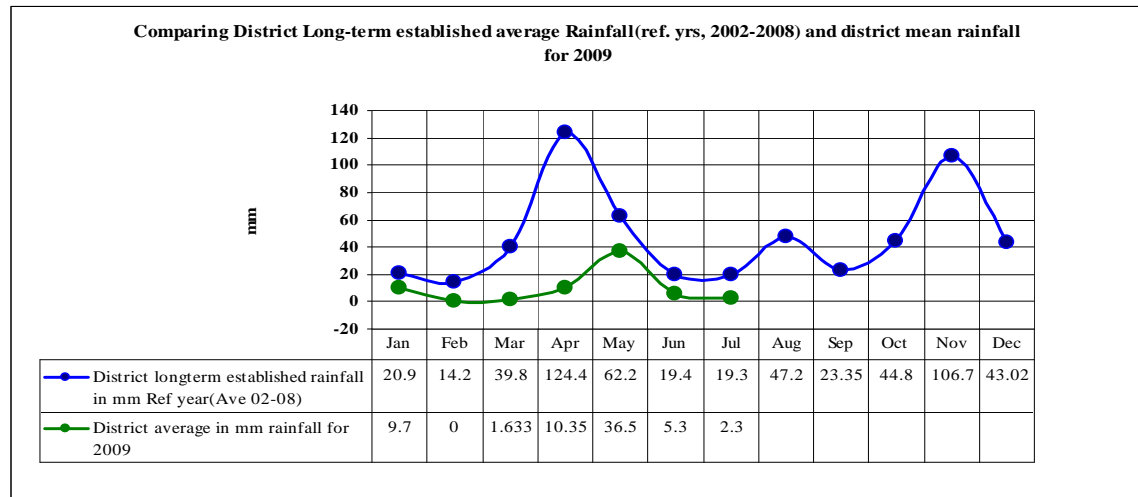
- Supplementary feeding programme at 9 health facilities in all divisions targeting approximately 49,991 beneficiaries.
- District-wide general relief food distribution targeting approximately 40% of the population in the lowlands and 20% in the plateau.
- Community Management of acute malnutrition nutrition project by World Vision Lorroki ADP targeting 1024 beneficiaries.

Recommendations to DSG and KFSSM

- General relief food distribution to target more beneficiaries (80% of the population) across the district to cushion them from the impacts of the currently experienced drought.
- KFSSG and other stakeholders to play a lead role in promoting conflict resolution initiatives among warring communities through facilitation of district peace committees to reach warring communities for dialogue.
- Supplementary feeding programme to target more beneficiaries that are at risk of Malnutrition in the district both under and over five years of age.
- FMD massive vaccinations campaigns to commence immediately to curb its spread from engulfing the whole district.

1.0 Environmental indicators (stability)

1.1 Rainfall



Source: District Agriculture/ALRMP II weather station

- The entire district experienced hot and dry weather conditions during the course of the reporting month. Failed long rains coupled with the apparently below normal performance of the continental rains normally received in the plateau (Kirisia/Lorroki divisions), worsened the drought situation.
- The western parts of the plateau received light erratic showers characterized by poor temporal and spatial distribution towards the end of the reporting month.
- On average the rainfall amount received was 2.3mm from last month's 5.3 mm. The amount was below normal by 88.5 per cent.
- The long term established threshold normally received during this period of the year is 19.3 mm.

1.2 Conditions of natural vegetation and pasture

- Quality and quantity of natural vegetation deteriorated even at the dry season grazing areas. Prevailing weather conditions and livestock concentrations in these areas were factors behind the above trend.
- Insecurity remained a constraint in access and utilization of forage resources in the western parts of the district.
- Forage resources were far below average compared to normal times during this period of the year.

1.3 Water sources and availability

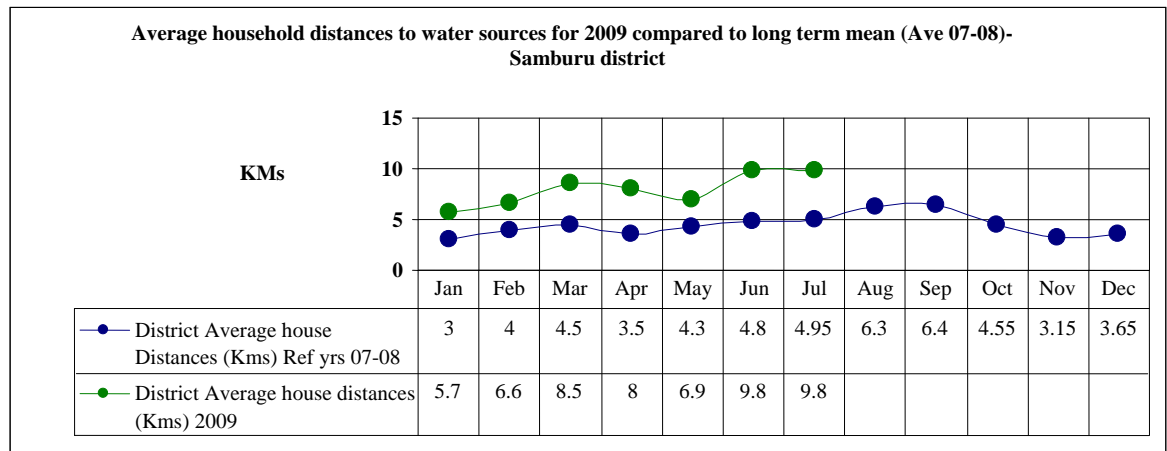
1.3.1 Use of water sources

- The main sources of water for livestock and households during the course of this month changed compared to last month and included traditional river wells, natural rivers, boreholes and pans/dams.
- Existing water sources dried up due to enhanced rates of evaporation, leading to increased distances to water points by households and livestock.

- Acute water shortage ravaged parts of Wamba and Waso divisions that constitute the newly established Samburu East district. The specific areas include Lpus, Sessia, Muruungai, Ndonyo-nasipa, Nkare-narok, Naimaral, Resim, Silango Nanyukie, remot, ngaroni, Muruungai and Lorrok Onyokie among others.

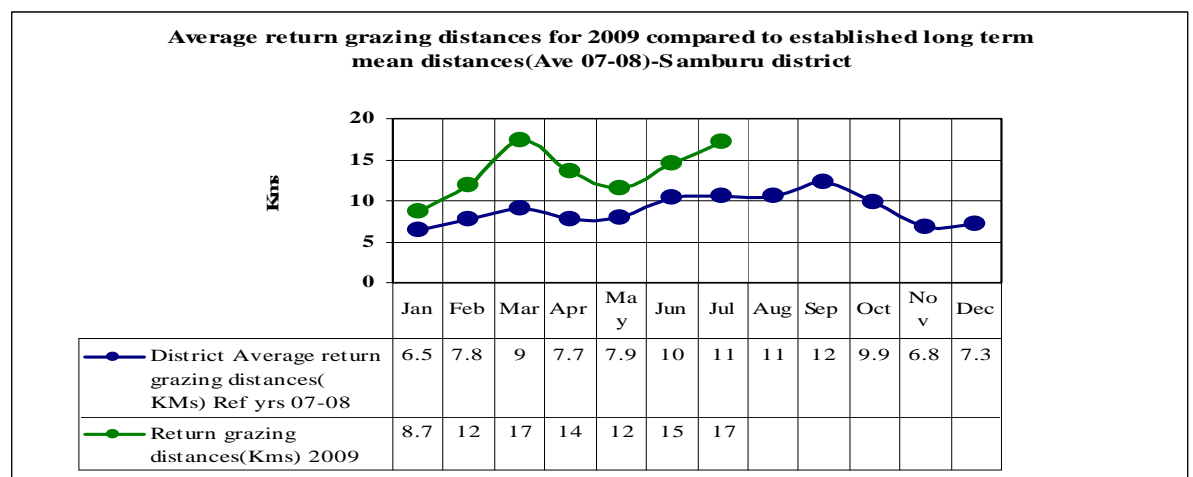
1.3.2 Distance (Kms) to water sources

a) Household distances



- Average house distance to nearby water sources increased to 9.8 Km from last month's 9.0 Kms.
- The distance was above the long term average by 63.3 per cent.
- Drying up of wet season watering points due to enhanced drought effects was a factor behind increased household distances.
- This implied that more time was spent in search of water by household members particularly women and children.

b) Grazing distances



- Average return grazing distance to main sources of water also increased to 17.1 Kms from last month's 14.6 Kms.
- Return grazing distance was above the long term mean by 54.5 per cent.
- Wet season watering points dried up leading to increased distance for livestock.

1.4 Emerging issues

1.4.1 Insecurity/conflict

- Tension amongst warring communities heightened in Samburu North district as livestock from the two warring communities' approached the insecure dry season grazing fields.
- In Samburu Central district, there were no major insecurity incidents reported in the course of the month under review.

1.4.2 Migration

a) Livestock migration

- Livestock from various regions within and without the district remained in dry season grazing zones of the upper parts of the plateau (Kirisia/Lorroki divisions), Marti, Baragoi, Moriyo and Nyiro areas.

b) Human migration/displacement

- Many families remained displaced in parts of Samburu North district and tension heightened amongst warring communities following cattle rustling incidences at Kawop and Parkati areas during the course of the month under review.
- Households in the western parts of the Agro pastoral livelihood zone too remained displaced and are concentrated in cluster villages in Lolmolog, Angata Rongai, Logorate and Longewan sub-locations. Residents of this livelihood zone were unable to till their original farms during this planting season.

1.5 Implications on food security

- The meagre performance of the long rains and the failure of the continental rains in the plateau, impacted gravely on household food security.
- Insecurity continued to undermine efforts to attain food security in the affected areas within the district.

2.0 Rural economy indicators (Food availability)

2.1 Livestock production

2.1.1 Livestock body conditions

- Livestock body conditions for cattle and sheep remained poor across the district. Goats' body conditions range from fair to poor.
- Deaths of cattle and sheep due drought continued across the district.
- Long trekking distances to watering points and grazing areas, susceptibility to diseases such as FMD and the poor quality of forage resources for the last five months were factors that contributed to poor cattle and sheep body conditions.
- Compared to a normal year livestock body conditions remained far below normal across the district.

2.1.2 Livestock diseases

- The major livestock diseases reported were FMD, ECF, and Anaplasmosis in cattle; Sheep pox, diarrhoea, and enterotoxaemia in sheep; Goat pox, PPR and diarrhoea in goats.
- FMD disease outbreak was reported at various areas of the larger Samburu district as from 8th June 2009. These areas are Ngilai and Marti in Baragoi division, Bukoi and Barsaloi in Kirisia divisions. The affected cattle population was approximately 50,000 while the cattle population at risk of disease infection in the district was 200,000.

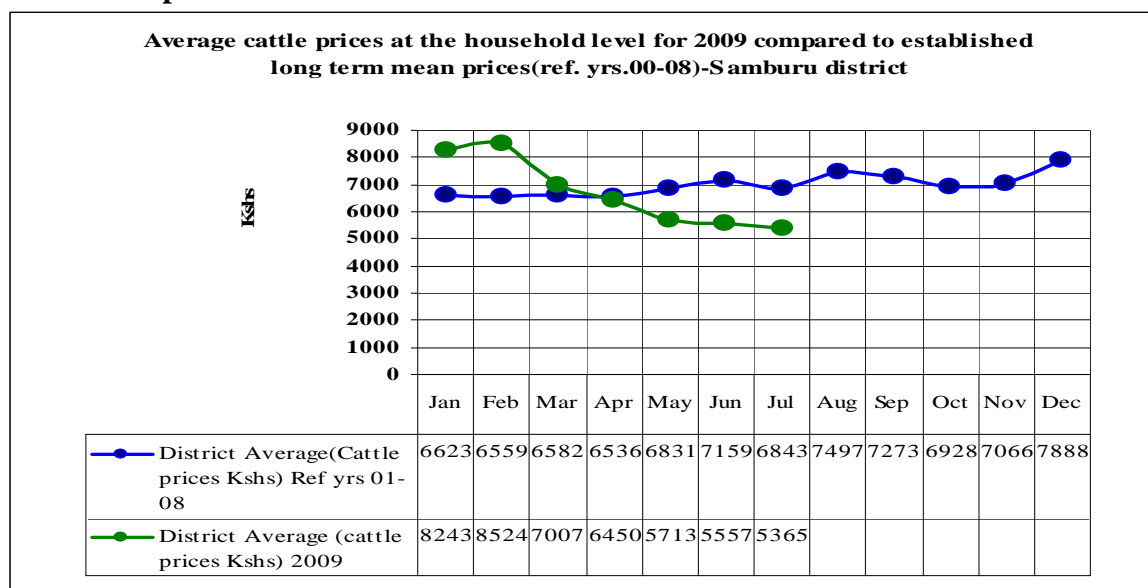
2.2 Implications on food security

Poor livestock body conditions, lower pastoralists' returns and economy and impacted negatively on their food security.

3.0 Access to food

3.1 Livestock marketing

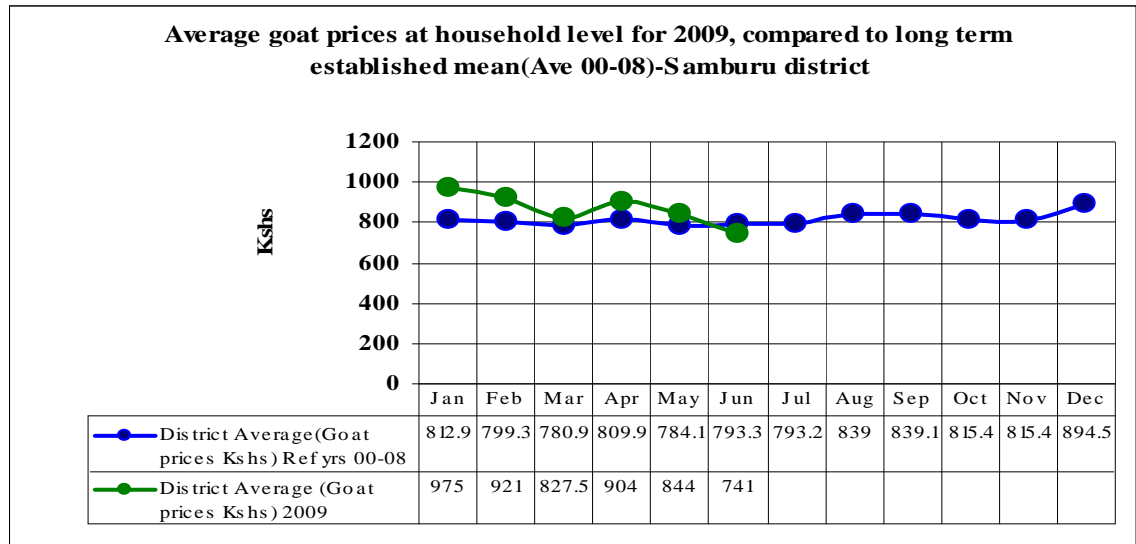
3.1.1 Cattle prices



Number of households (N) =404

- Average cattle price fell to Ksh5,365 from Ksh5,557 in June.
- The price was below normal by 22 %.
- Below normal average cattle prices were attributable to poor cattle body conditions and quarantine imposed by veterinary department to curb FMD spread.

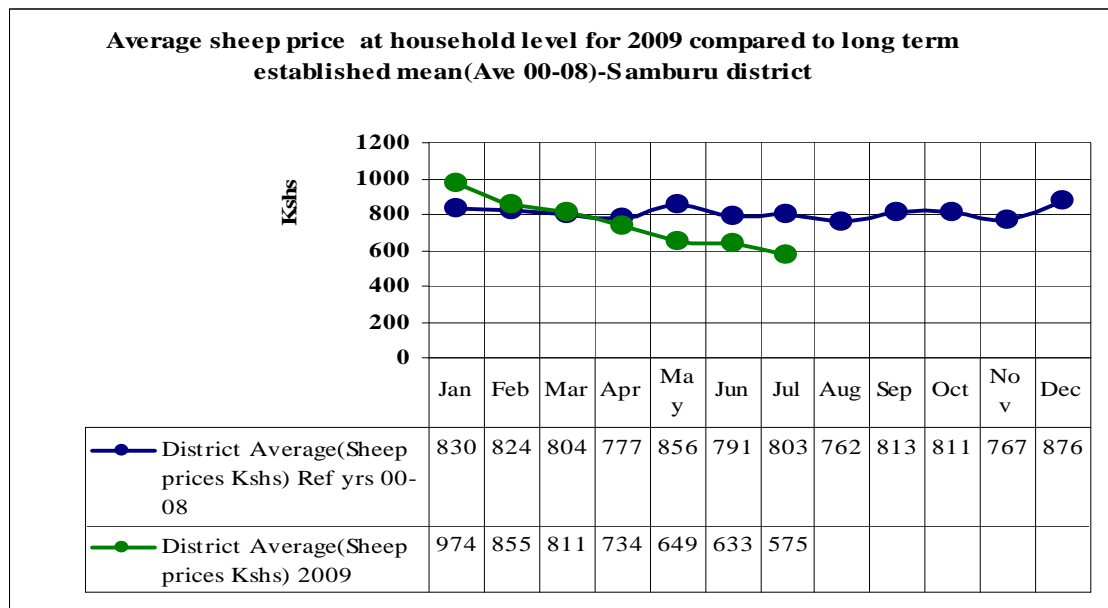
3.1.2 Goats prices



Number of households (N) =404

- Average goat price rose slightly to Ksh750 from last month's Ksh741.
- However, goats' price remained below the long-term average by 5.4 per cent.
- Fair to poor goats' body condition was a factor behind the slight price rise.

3.1.3 Sheep prices



Number of households (N) =404

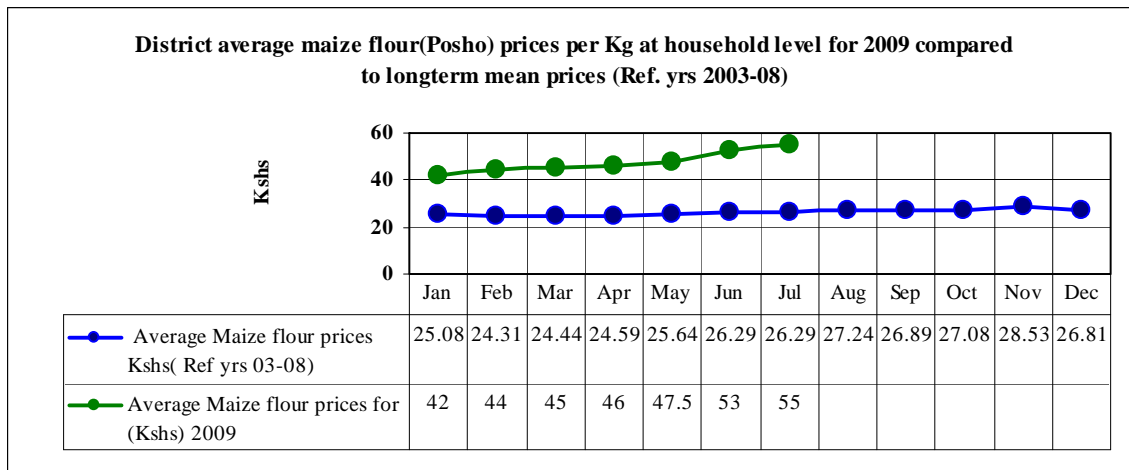
- Average sheep price fell to Ksh575 from Ksh633 in June.
- The price was below the long term average by 25 per cent.
- Poor sheep's body condition was a key factor that contributed to the downward price trend.

3.2 Milk consumption

- Milk availability at the household level remained scarce as drought stress bit hard across the district.
- This was attributed to poor livestock body conditions and record low birth rates.

3.3 Food prices

3.3.1 Posho (maize flour) prices



Number of communities (N) =31

- Maize flour price on average rose to Ksh55 per kilogram of locally milled maize from Ksh53 in June.
- Compared to the long term mean, the posho price was above normal by 102 per cent.
- The district remained an importer of maize and it experiences constant supply shortages which led to hiked prices.
- Added transport costs also contributed to high posho prices in many lowland areas compared to the plateau.

3.4 Income

3.4.1 Livestock income

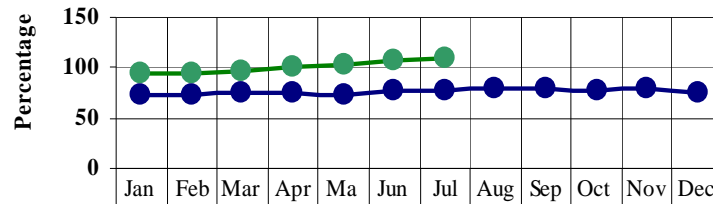
- Sale of livestock remained a major source of income for many households across all the livelihood zones.

3.4.2 Other income

- Casual labour, sale of charcoal, petty trade, sale of wood products, remittances and formal employment were the other income sources for many households within the district.

3.5 Cereal/ meat price ratio (%)

**Cereal:Meat price ratio% for 2009 compared to longterm established mean
(ref yrs. (03-08)**



● Cereal:Meat price ratio % (Mean ave 03-08)	72.4	73.1	75.1	74.4	73.2	76.9	76.4	79.1	78.3	77.8	78.4	74.8
● Cereal:Meat prices ratio % district ave.2009	94.1	95.3	97.4	99.8	102	108	109					

Number of households (N) = 404

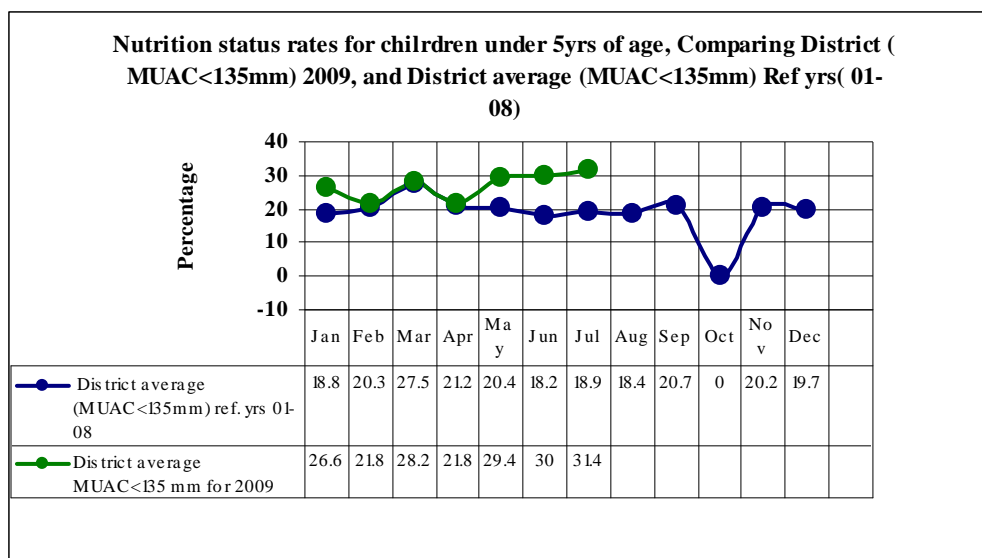
- Pastoralists' households required 1.093 kilogram of meat in exchange for a kilo of cereals.
- The exchange rate remains exorbitant as the established long-term mean average is 0.76 kg of meat against a kilogram of cereals.
- Pastoralists' purchasing power soared to 109.3 per cent from 107.5 per cent in June and was below the long-term mean by 43 per cent.
- This was pegged to below normal livestock prices coupled with highly priced cereals, particularly maize.

3.6 Implications on food security

- Below normal livestock prices and highly priced essential household food commodities impacted negatively on household food security.
- This adversely eroded pastoralists' purchasing power and impacted severely on food security at the household level.

4.0 Human welfare indicators (utilisation of food)

4.1 Nutrition status



Number of children (N) =1780 from 404 households

- The nutritional status of children below five years worsened during the month under review.
- The percentage of those considered at risk of malnutrition (based on monthly MUAC<135mm measurements increased to 31.4 from 30.0 last month.
- Nachola, West Gate, Kawop, Tuum, and South Horr sentinel sites portrayed alarming trends with the percentage of those at risk increasing to 76.9, 61.9, 58.35, and 43.2 respectively.
- Unavailability of adequate and nutritionally valuable food in households was a key factor behind the above alarming trends.

4.2 Human health

- Malaria, upper respiratory tract infections and diarrhoea were the major human ailments reported in various parts of the district but within manageable levels.
- Cholera outbreak was subdued in the district and no cases were reported during the month.
- The ailments were countered at the household level through medical assistance sought from public health centres/ dispensaries, private clinics and use of local herbs/ concoctions.

5.0 Current interventions

5.1 Non-food interventions.

- District wide livestock disease surveillance.
- Quarantine imposed to curb spread of FMD.

5.2 Food-aid interventions

- Supplementary feeding programme (SFP) in 9 health facilities in all divisions targeting approximately 4991 beneficiaries.
- District-wide general relief food distribution targeting 20% of the population in the plateau and 40% of the population in the lowlands.
- Community Management of acute malnutrition nutrition project by World Vision Lorroki ADP, targeting 1024 beneficiaries.

5.3 Other coping strategies

- The household coping mechanisms worsened compared to the previous months.
- Sentinel sites Kawop, and (Amayia, Swaari and West Gate) portrayed abnormal trends of 4.9, and 4.3 respectively against a coping strategy index (0 to 10), depicting the devastating impacts of the current drought situation to many households.

6.0 Recommendations to DSG and KFSM

- Re-targeting of beneficiaries for general relief food aid to be done to include more beneficiaries (approximately 80% of the district population) who are in dire need of food, this will cushion them from the impacts of the currently experienced drought and famine situation.
- Supplementary feeding programme to target more beneficiaries at risk of malnutrition in the district under and over five years of age.
- KFSSG and other stakeholders to play a lead role in promoting conflict resolution initiatives among warring communities through facilitation of district peace committees. **(Action: DSC, District Peace committees, Pastoral associations, KFSSG and Communities).**
- Massive vaccination campaigns against FMD should be rolled out immediately in areas that cattle have not contracted the disease to contain it from engulfing the whole district.