

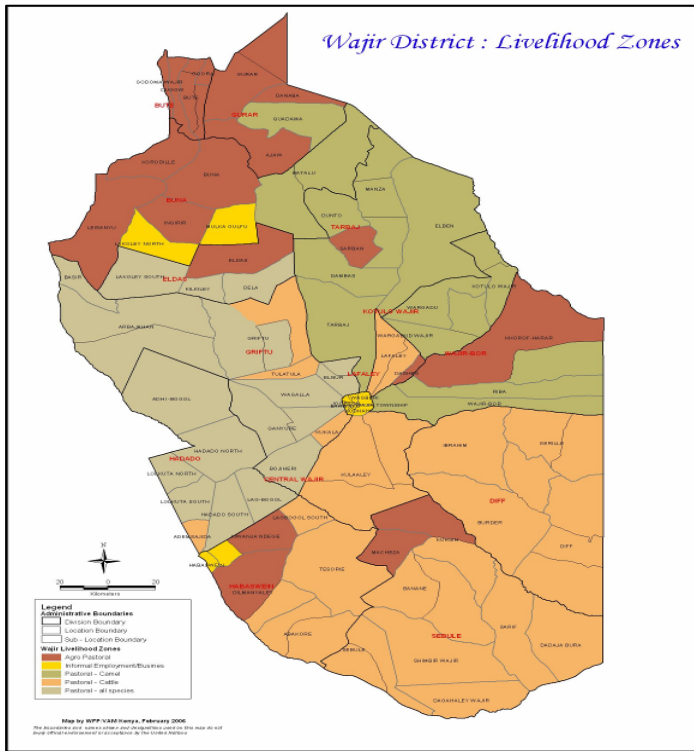


**OFFICE OF THE PRIME MINISTER
MINISTRY OF STATE FOR THE DEVELOPMENT OF NORTHERN KENYA AND OTHER ARID LANDS
ARID LANDS RESOURCE MANAGEMENT PROJECT II**

DROUGHT MONITORING BULLETIN, JULY 2009

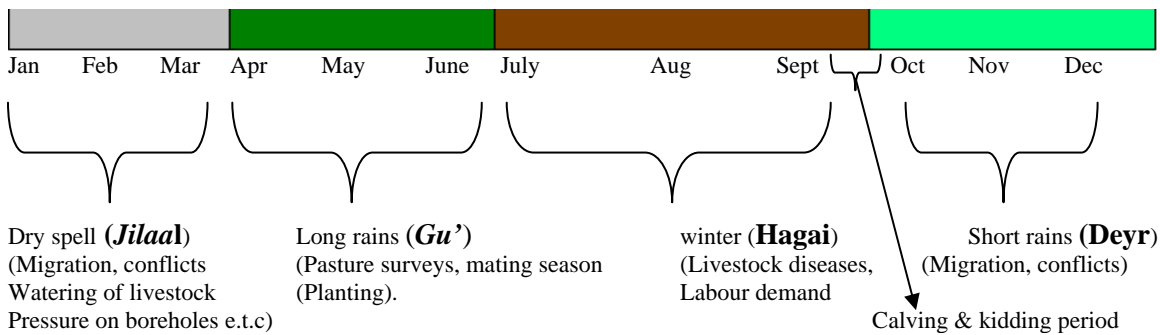
Wajir District

Warning Stages



Livelihood Zone	Warning Stage	Trend
Pastoral – All Species	Alarm	Worsening
Pastoral – Cattle	Alarm	Worsening
Pastoral – Camel	Alarm	Worsening
Agro – Pastoral	Alarm	Worsening
Informal Employment/Business	Alarm	Worsening
District	Alarm	Worsening

Seasonal Calendar



Situation overview

- The district did not receive any rainfall during the month.
- The pasture and browse conditions continued to deteriorate as the drought progressed.
- Water availability also continued to decline as all the surface water pans dried up in the 4 districts, except 2 water pans closed for human consumption in Diif and Tarbaj. Boreholes and the shallow wells registered a drastic yield decline due to lack of natural recharge of rainfall, coupled with high extraction for livestock use and water trucking.
- Water trucking to pastoralist sites that act as fallback areas was started with the support of CDF, OXFAM ALRMP and Water.
- Over 54 centers were depending on water trucking including Ogoralle, Gunana, Elyunis, Majabow, Wajir-bor, Haragal, Satwario, Belatul Amin and Burmayo in Wajir East, Wara , Basir, Lolkuta North, Hadado, Basir, Anole, Jugale, Boa, Adan-awale, Bojiheri, Barmisha in Wajir West, Shimbirbul, Hubsoy, Madahbaqay, Handaki, Qanjara and Ibrahim-urey in Wajir South, Qudama, Iekole north, Ingirir, Milsided, Hote Lesayu in Wajir North.
- Livestock body conditions continued to deteriorate, especially for cattle and sheep.
- The trekking distances increased from 40-44 km the previous month to 45-55 km, especially between Arbajahan to Basir and Adan Awale to Griftu wells.
- Livestock prices reduced for all the species, especially camels from Ksh8,318 in June to Ksh8,292, cattle from Ksh6,333 to Ksh6,290 and goats from Ksh1,101 to Ksh1,100 as a result of poor body condition.
- The main causes of morbidity and mortality in the district remained malaria, upper respiratory tract infections, intestinal worms, malnutrition and cases of diarrhoeal diseases were reported district-wide.
- The availability and supply of milk continued to decline as the prices of milk at the local market increased to Ksh 80-100 per 750mm bottle of milk. Few households were buying powdered milk from shops in Wajir while others took tea with no milk. This was the worst indicator for pastoralists who consider milk as a main food supplement.
- Food availability was poor and commercial foods prices continued to escalate, especially sugar which widely used the Somali pastoralists. Prices of a 50kg bag of sugar increased from Ksh2,800 to Ksh3,900 and attributed to the closure of the border. Also prices of other commodities such as maize price increased from Ksh54 to Ksh56 during the month.
- The nutrition status of children below five years (based on MUAC < 135mm measurement) declined slightly, with the percentage of those rated at risk of malnutrition rising to 34.0% from 33.8% in June.
- Migration of livestock was reported towards permanent water points, especially for those who migrated to Ethiopia, Somalia and Mandera due to depletion of pastures, browse and water.
- The security situation was calm and there were no reported cases, except few individual conflicts over water and pasture.
- The four Wajir districts were at alarm stage, with indicator's showing scenarios similar to the 2005/06 drought.

Recommendations to DSG and KFSM

- Increase food aid targets to 75% of the population considering the poor purchasing power of the pastoralist.
- Provision of contingency fund for drought mitigation due to the failure of the long rains.(Action : ALRMP/OXFAM)
- Carry out de-stocking programme (livestock off-take) especially cattle and shoats.(Action MoLD/OXFAM, VSF/Alrmp/KRCS).
- Provision of emergency water or drilling of contingency boreholes at identified fallback areas during the RAT(Walanri, Ogoralle, Diff, Likole, Matho and shimbirbul). (Action-Water/ALRMP/Regional dev/KRCS)
- Ensure all boreholes are operational at optimum level including repair of the existing ones and ensuring that they are functional.
- Purchase of tools for borehole maintenance team and repair of water bowsers.
- Provision of stand by gen-set, submersible pumps, fast moving spares and fuel subsidy for emergency drought mitigation measures.
- Provision of relief hay and livestock concentrate.
- Allocate emergency funds for mass vaccination of small stocks against PPR and CCPP in the entire district.
- Up scaling of outreach activities (Immunization and treatment of minor illnesses) especially to water trucking centres.
- Provide food for fees for secondary schools. Boost the school bursaries for CDF kitty.
- Strengthening of conflict resolution mechanisms, especially in areas with high concentration Danaba/Dandu, Gireille/Somalia border, Kutulo and along Wajir – Marsabit border.

Current interventions

Food aid

- School-feeding program supported by WFP is on-going.
- EMOP by world food program/GOK through the lead Agency Aldef-Kenya and implementing agency Wasda.
- Support to vulnerable groups like grannies with relief from OOP.

Non - food interventions

- Support to emergency borehole repairs, replacement of submersible pumps and repair of engines and replacement of draw pipes and fuel subsidy by (ALRMP.)
- Kazi Kwa Vijana (KKV) by government of Kenya.
- Emergency water trucking to centres and fall back areas with pasture by Oxfam, Almp, CDF and Water.
- Community Health Strategy – 3 community unit in each of the four districts.
- Nomadic Clinic – Wajir South/Eest/East.

1.0 Environmental indicators (Stability)

1.1 Rainfall

The district did not receive any rainfall during the month under review.

1.2 Condition of natural vegetation and pasture

- The pasture and browse conditions continued to deteriorate as the drought progressed.
- Water trucking to pastoralist sites that act as pasture fallback areas were started with the support of CDF, OXFAM, ALRMP and Ministry of Water.

1.3 Water sources and availability

- Water availability continued to decline as all the surface water pans dried up in the 4 districts, except 2 water pans closed for human consumption in Diif and Tarbaj.
- The boreholes and the shallow wells registered a drastic yield decline due to lack of natural recharge of rainfall, coupled with high extraction for livestock use and water trucking.
- Over 54 centers were depending on water trucking including Ogoralle, Gunana, Elyunis, Majabow, Wajir-bor, Haragal, Satwario, Belatul Amin and Burmayo in Wajir East, Wara , Basir, Lolkuta North, Hadado, Basir, Anole, Jugale, Boa, Adan-awale, Bojiheri, Barmisha in Wajir West, Shimbirbul, Hubsoy, Madahbaqay, Handaki, Qanjara and Ibrahim-urey in Wajir South, Qudama, lekole north, Ingirir, Milsided, Hote Lesayu in Wajir North.

1.3 Household access to water

- The accessibility of water at household level has increased in trekking distance and the time taken is approximately 15-18 hours in the pastoral community. Water are transported mainly on 20 Litres jerican for household consumptions from main source to the house hold with donkey cart (case example is from Griftu to Matho)
- Some of the households were separated from the large stock and remained with the goats and sheep closer to water sources.

1.3.1 Livestock access

- Livestock accessed water at an average distance of 50km from the grazing areas.
- Livestock was also concentrated in areas with high yielding boreholes.
- Livestock that had moved to Somalia/Ethiopia in search of pasture, browse and water migrated to Wajir.

1.4. Emerging issues

1.4.1 Insecurity/conflict/Human displacement

- The security situation was calm and there were no reported cases except few individual conflicts over water and pasture.
- High increase of essential commodity prices including cereals and sugar.
- Cases of kwashiorkor and marasmus were reported all over major health facilities, including Wajir District hospital, Khorof Harar, Griftu, Bute and Habaswein, Eldas and Tarbaj.

1.4.2 Migration

- Migration of livestock was reported towards permanent water points of the four districts of Wajir, especially for those who migrated to Ethiopia, Somalia and Mandera due to depletion of pastures, browse and water.

- History has repeated itself that in 1989, 1999 and 2009 have been drought years affecting national census since many pastoralist have moved across the borders or have migrated to other parts of the district.

1.4.3 Implications on food security

- The low targeting of food aid, failure of crops in all the divisions, increased prices of commercial food and sugar and the poor prices of livestock will affect the purchasing power of the pastoralists, hence food insecurity implication.
- The national census will not give the true picture of the population since many pastoralist are across borders or not in their normal locality.

2.0 Rural economy indicators (Food availability)

2.1 Livestock production

Production of livestock was low due to the stress-related with the prolonged drought.

2.1.1 Livestock body condition

- Livestock body condition deteriorated due to inadequate browse, pasture and the long trekking distance for water and pasture.
- Cattle and shoats had poor body condition while Camels were fair.
- In some areas cattle were too weak even to stand to graze and had to be fed at household level, especially in Tarbaj division.
- In some cases household expenses increased as a result of buying/purchasing alternative feeds for the weak animals.

2.1.2 Livestock diseases

- Diseases such as PPR and CCPP were reported, especially at Eldas while suspected cases of Haemorrhagic septicemia were reported in Dadajibula and Diif. Death of cattle has been reported in Salelma due to bursting of stomach after staying in thirst in more than 4-5 days.

2.1.3 Milk production

- Milk production was still low as condition of pasture and browse was still poor.
- Milk prices increased and the availability of the commodity reduced, especially in areas affected by migration.
- Some pastoralists were depending on powdered milk as an alternative source.

2.2 Crop production

- All crops dried up at germination stage, especially in Wajir Central, Tarbaj and Sabuli.

2.2.1 Timeliness and status of various crop production activities

- Crops failed due to inadequate rainfall and the community lost hope of dry land farming.
- However, in Wajir Central the community used water from shallow wells for small-scale irrigation, especially vegetables.

2.2 Pests and diseases

No diseases and pest that were reported during the month in relation to crops.

2.2.3 Harvest

- No harvest from rain fed crops but little harvest is from kitchen Garden farming which is sold at the local market especially in Wajir Central, Eldas and Griftu.

2.2.4 Implications on food security

- Poor or failure of the long rain season will have a negative impact on food production, livestock body condition, prices of food, livestock prices and generally on the food security situation in the districts.
- Low livestock prices will similarly have a negative setback to the pastoralist purchasing power.
- Low or non-intake of milk will have negative impact, especially to the children and the aged, leading to high malnutrition rates.

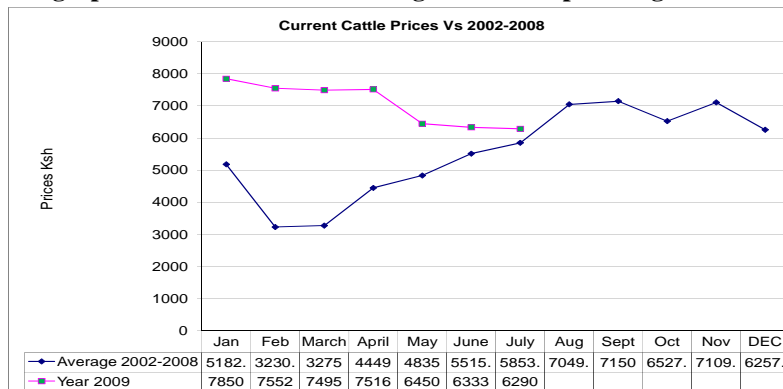
3.0 Access to food

3.1 Livestock marketing

- Generally, livestock prices were poor, especially in all species at the local market while the demand was low due to the body condition, prolonged drought and shortage of water.

3.1.1 Cattle prices

The graph below indicates cattle long term mean prices against current year 2009

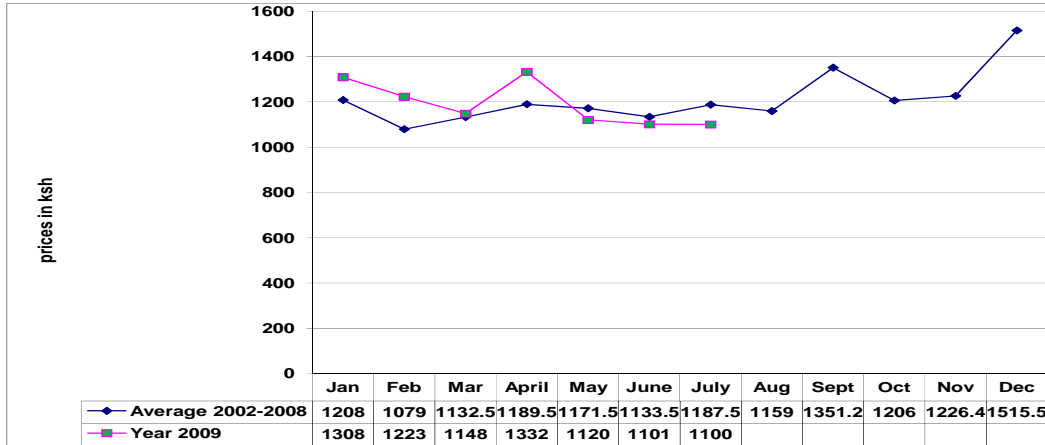


N= 420

- The price of cattle reduced in local markets compared to the previous month from Ksh6,333 in June to Ksh6290.
- The depreciation was due to poor body condition and low demand.

3.1.2 Goats prices

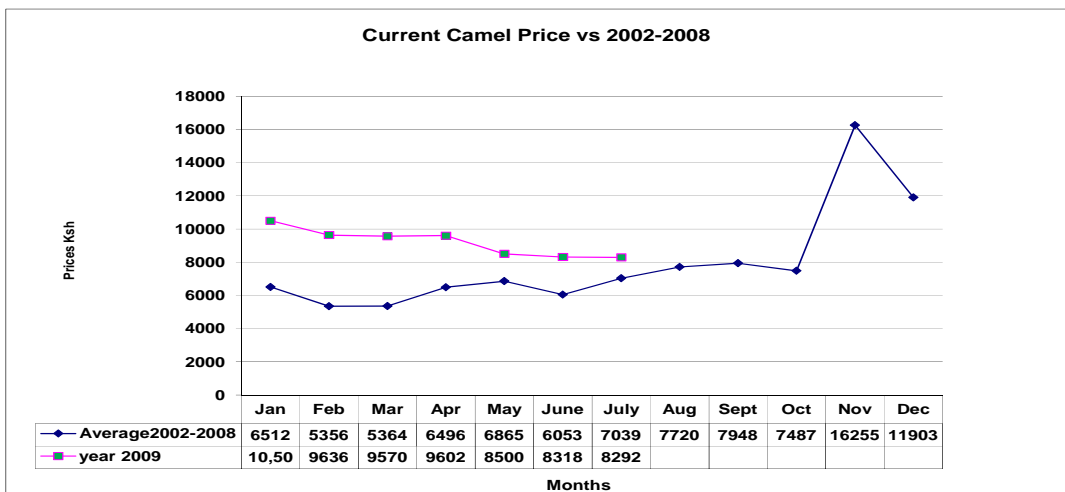
The graph indicates Goat long term mean prices against current year 2009.



N=420

- The prices of goats reduced compared to the previous month from Ksh1,200 to Ksh1,101.
- Despite the price fluctuation, goats were still sold at the terminal and local markets.

3.1.3 Camel prices



N=420

3.2 Livestock sales

- The market sales continued to reduce due to the unreliable rain received. The demand and the sales rate were low compared to other season.
- Poor body condition, prolonged drought and poor pasture/browse condition were the determining factors in poor market.

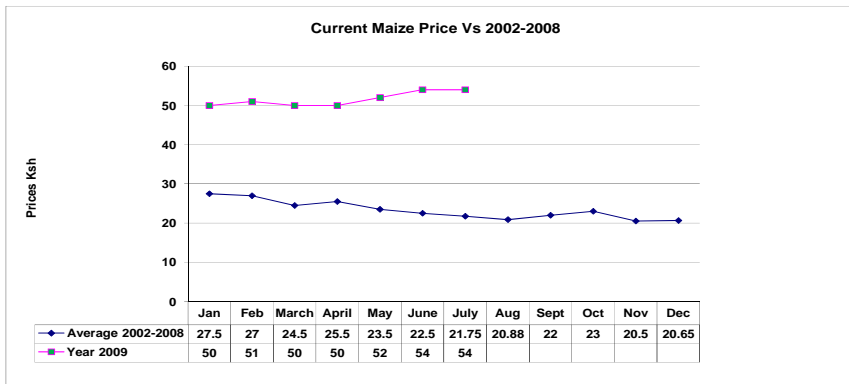
3.3 Milk consumption

- Consumption of milk was extremely low as the commodity was scarce, with the little available used as alternative source of income to purchase other foods.
- Communities, especially in settlements, opted for powdered milk as alternative milk supply.

3.4 Crop prices

3.4.1 Maize prices

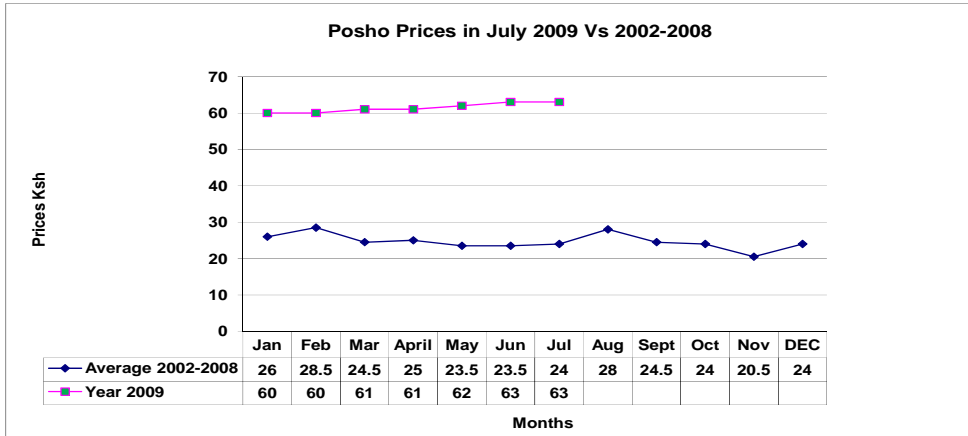
The graph below indicates maize long term mean prices against current year 2009.



N=420

- Maize prices were still high during the month at Ksh54 per kilo though stable compared to the previous month.
- Majority of households opted for the commodity since the price was lower as compared to other food stuffs.

3.4.2 Posho prices

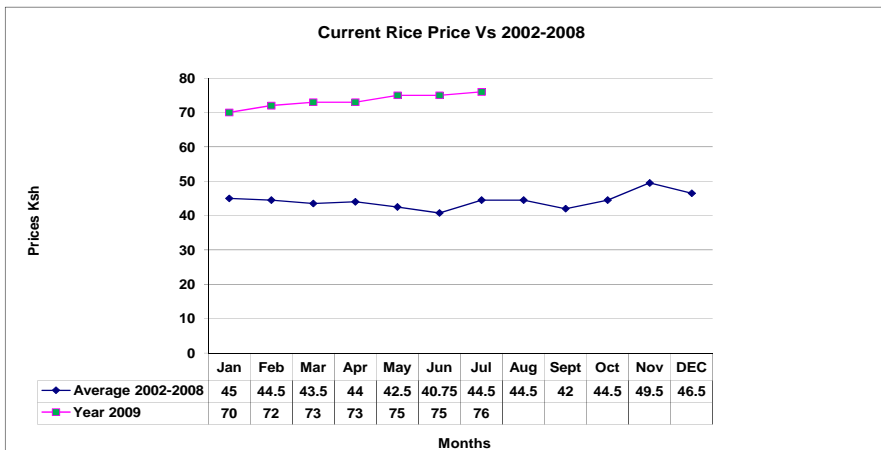


N=420

- Posho prices remained stable during the month at Ksh 63 per kilo.
- The stability could be attributed to the stable whole maize prices.

3.4.3 Rice prices

The graph below indicates long term mean prices of rice against the current year 2009



- The prices of rice increased slightly compared to the previous month.
- The average price was Ksh76 per kilo compared to Ksh75 in June.

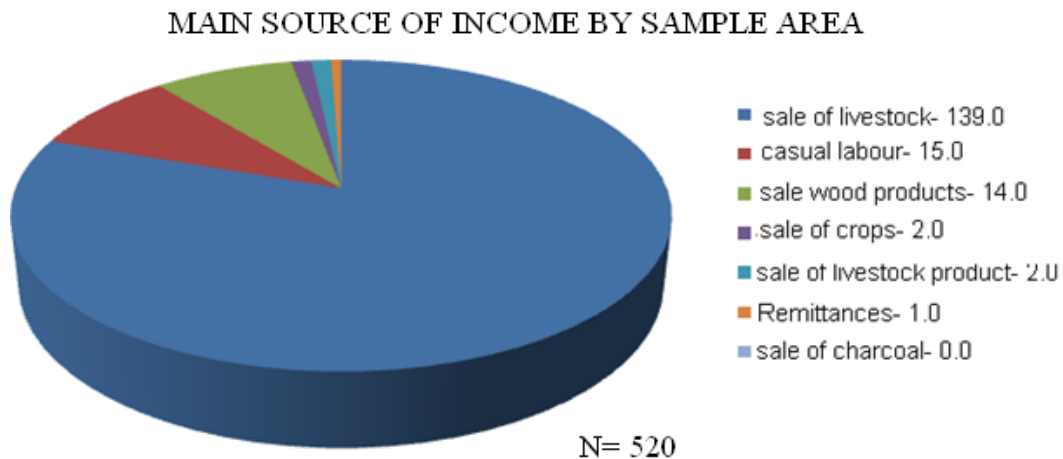
3.5 Income

3.5.1 Crop income

- Kitchen farming using small irrigation pumps, especially in Wajir central was an alternative source of income.
- Water melons were grown widely in small irrigation farms.
- Drought resistant crops were also grown in small scale farms, especially in the northern parts of the district such as Bute during seasons with good rains.

3.5.2 Livestock income

- The main source of income is sell of livestock but poor price, low demand and poor body condition all have a negative set back to the pastrolist community.



3.5.3 Other income

- Sale of gum and resins was commonly practiced.
- Wages at water sources, especially at the shallow wells.
- Sale of miraa, quarry and daily casual labour.
- Fetching of firewood was an alternative source of income, especially in Small business/informal livelihood zone.

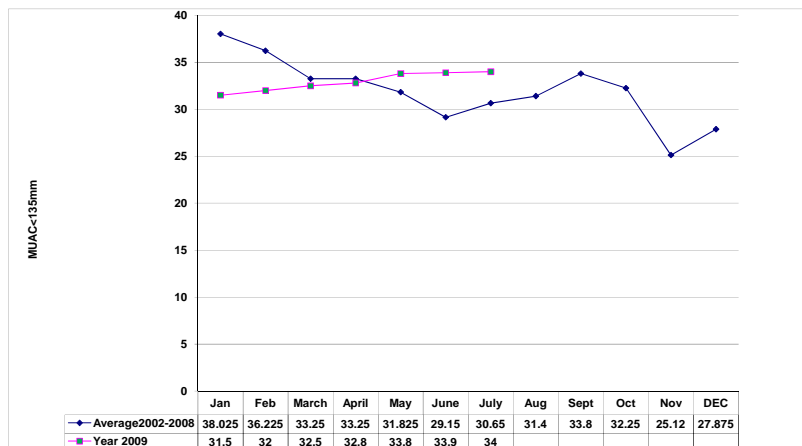
3.6 Implications on food security

- The main source of income was sale of livestock but poor price, low demand and poor body condition all had a negative set back to the pastrolist community.

4.0 Human welfare indicators (Utilisation of food)

4.1 Nutrition status

The graph indicates long term nutrition status of children <5 years
Muac <135mm against the current year 2009



N= 420

- The nutrition status of children below five years (based on MUAC < 135mm measurement) declined slightly.
- The percentage of those rated at risk of malnutrition rose to 34.0% from 33.8% in June.
- A nutrition survey carried out by the Save the Children UK in June in Wajir South indicated 19.1% global acute malnutrition (GAM) and 4.1% the children are severe acute malnourished (SAM).
- In Wajir East the same survey revealed a GAM of 25.3% and SAM of 4.6% where both districts were above WHO recommended threshold of 15%.
- Merlin conducted a nutritional survey in Wajir West and Wajir North and report is not yet out.
- The low nutrition status was attributed to food health and care practices. Malnutrition increased in all the districts due to lack or inadequate rainfall in almost all the district, hence poor market, increased food prices, reduced animal's production such milk.
- Withdrawal of Merlin emergency nutrition programme affected the vulnerable groups, eg, children under five years, pregnant and lactating mothers.
- Facilities including Ogoralle, Ajawa , Buna ,Kutulo and Wajir-bor have reported cases of Kwashiorkor.

4.2 Human health

The main causes of morbidity and mortality in the district remained malaria, upper respiratory tract infections, diarrhoeal diseases and malnutrition.

4.3 Flagged areas

Cases of kwashiorkor were reported in Ogoralle, Ajawa , Buna ,Kutulo and Wajir-bor were reported.

5.0 Current interventions

5.1 Non-food interventions

- Support to centres with institutions such as dispensaries and schools through water trucking using GOK water bowsers by ALRMP and Water.
- Mobile VCT services supported by APHIA II Support to emergency b/hole repairs', replacement of submersible pumps and repair of engines and replacement of draw pipes by ALRMP.

5.2 Food aid

- EMOP relief food distribution by WFP through lead agency, ALDEF-K and implementing partners (WASDA).
- Basic relief support from OOP especially to vulnerable groups through KRCS.
- FFA-food for asset program by WFP through partner agency.
- Nutrition support in OTP/SFP by SCUUK.

5.3 Other coping strategies

- Separation of livestock herds to small stock and large stock, slaughtering of calves.
- Purchasing food on credit.
- Reliance on remittances.
- Migration of pastoralists to areas with better pastures, browse and water.
- Charcoal burning.
- Sale of gum and resins, miraa and quarry products such as white wash.

6.0 Recommendations to DSG and KFSM

- Increase food aid targets to 75% of the population considering the poor purchasing power of the pastoralist.
- Provision of contingency fund for drought mitigation due to the failure of the long rains.(Action : ALRMP/OXFAM)
- Carry out de-stocking programme (livestock off-take) especially cattle and shoats.(Action MoLD/OXFAM, VSF/Alrmp/KRCS).
- Provision of emergency water or drilling of contingency boreholes at identified fallback areas during the RAT(Walanri, Ogoralle, Diff, Likole, Matho and shimbirbul). (Action-Water/ALRMP/Regional dev/KRCS)
- Ensure all boreholes are operational at optimum level including repair of the existing ones and ensuring that they are functional.
- Purchase of tools for borehole maintenance team and repair of water bowsers.
- Provision of stand by gen-set, submersible pumps, fast moving spares and fuel subsidy for emergency drought mitigation measures.
- Provision of relief hay and livestock concentrate.
- Allocate emergency funds for mass vaccination of small stocks against PPR and CCPP in the entire district.
- Up scaling of outreach activities (Immunization and treatment of minor illnesses) especially to water trucking centres.
- Provide food for fees for secondary schools. Boost the school bursaries for CDF kitty.
- Strengthening of conflict resolution mechanisms, especially in areas with high concentration Danaba/Dandu, Gireille/Somalia border, Kutulo and along Wajir – Marsabit border.