

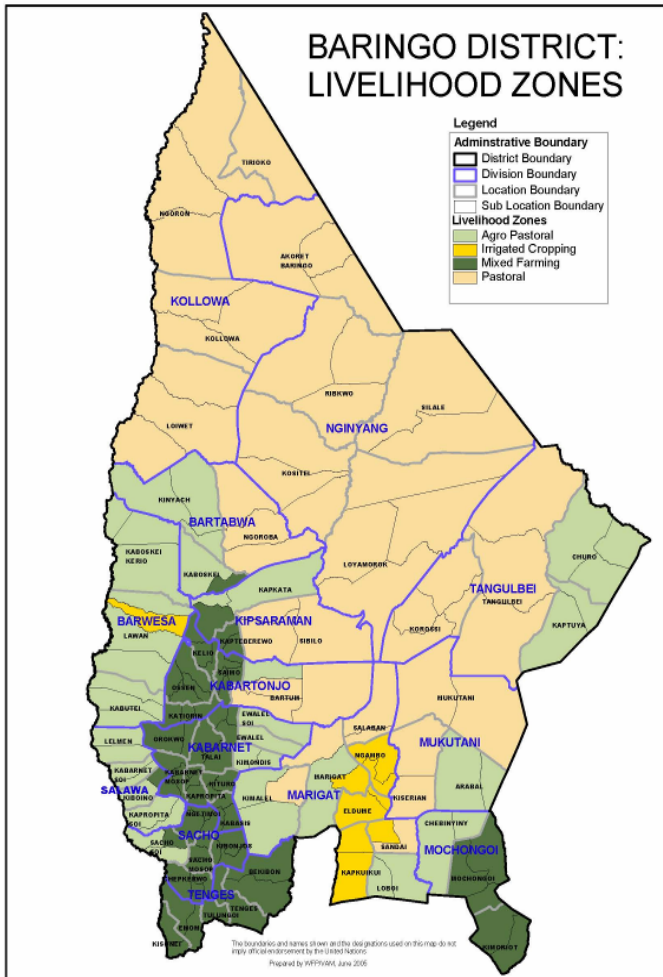


**OFFICE OF THE PRIME MINISTER
MINISTRY OF STATE FOR THE DEVELOPMENT OF NORTHERN KENYA AND OTHER ARID LANDS
ARID LANDS RESOURCE MANAGEMENT PROJECT II**

DROUGHT MONITORING BULLETIN, JUNE 2009

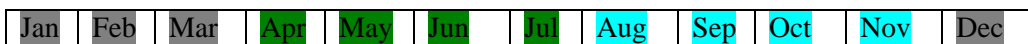
Baringo Central/ North/ East Pokot/ Marigat Districts

Warning Stages



Livelihood Zone	Warning stage	Trend
Pastoral	Alarm	No change
Agro pastoral	Alarm	No change
Irrigated Cropping	Alarm	Improving
Mixed farming	Alarm	Improving
Project area	Alarm	No change

Seasonal Calendar



- Dry season :- (Land preparation, minimal calving, lambing & kidding)
- Long rains :- (Planting, most kidding & lambing and minimal calving & honey harvesting)
- Short rains :- (Most calving & honey harvesting and minimal kidding & lambing, pre-harvest & harvesting)

Situation Overview

- The district received 48.25 mm average rainfall from four recording stations during the month compared to 145.6 mm from 5- recording stations the previous month. Temporal distribution was also poor.
- The rainfall received had a positive impact on the grazing and water resources in areas that reported rainfall.
- The quality and quantity of forage improved in the mixed farming and irrigated cropping livelihood zones while it remained worse in pastoral and agro-pastoral livelihood zones.
- Water availability for both human and livestock improved in the areas that reported rainfall.
- Body condition of livestock was generally fair. However, deaths were still reported due to the effects of drought stress in the pastoral and agro-pastoral livelihood zones.
- Milk production was still low and this was attributed to the poor body condition of the animals.
- The average prices of livestock decreased in all the species. The decrease was attributed to deteriorating body condition, coupled with lack of buyers during the month, hence low prices. Poultry prices also decreased compared to the last month due to poor demand.
- The average prices of food crops and other commodities increased during the month owing to lack of supplies in the markets within the district and the neighboring districts.
- Sale of fish, casual labour, petty trade (local beer brewing e.t.c.) and sale of charcoal and sale of wood products were the other alternative sources of income for most sampled households during the month after the sale of livestock.
- The nutrition status of children below five years (based on MUAC<135mm measurement) improved slightly, with the percentage of those rated at risk of malnutrition dropping to 13.5% from 15.0 % the previous month. This was attributed to issuance of supplementary foods for children at the household level under the EMOP relief food distribution. However, the status is likely to decline if milk production does not improve to supplement the children's nutrition.

Recommendations to DSG and KFSM

- **The veterinary department / agencies** should step up support to the livestock health sub-sector through vaccination and treatment of clinical cases. In particular, more effort should be directed at investigating cases of premature births in goats and cattle in Yatya and Kinyach communities in Kipsaraman and Bartabwa divisions respectively. Upsurge of red water was reported in Kamrio community (Nginyang division), ECF in Ngambo, Ngoron and Kinyach communities in Marigat, while goat and sheep pox outbreaks were reported in Kolloa and Bartabwa divisions respectively.
- **The GOK and other aid agencies** to put more effort in ensuring that communities in East Pokot, North Baringo, Marigat and Baringo central districts are given continuous relief food supplies (GFD) and supplementary food for children until the stress situation normalises as malnutrition cases are rising, prices of food commodities are rising, animals are dying due to drought effects hence people cannot cope with the stress, also milk production from animals declined drastically due to the drought effects that has persisted for a long period.
- There is need to strengthen conflict prevention and peace-building initiatives to maintain the already achieved level of peace and further reduce it to the lowest level along the

borders of East Pokot, Baringo, Marakwet, Turkana, Laikipia West and Samburu districts to enhance peaceful co-existence.

- **The MOH** should make efforts to supply more anti-malarial drugs in all the rural health facilities that are far from the district hospitals to cope with Malaria upsurge at the moment and investigate cases of enteric fever upsurge in Ng'ambo and Sirata communities in Marigat district.
- **The District Game Warden** to put more efforts in ensuring that crocodiles preying on goats in Sirata community (Mikutani division) are contained to prevent daily loss of livestock.

Current interventions

Non-food interventions

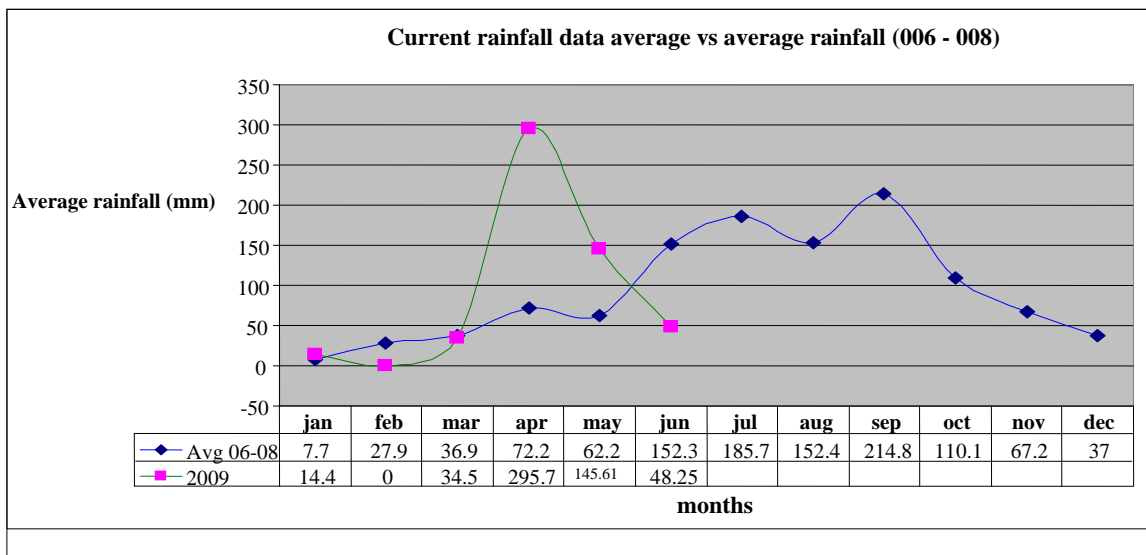
- Excavation of Apuketin and Kamrio (East Pokot), Bukon (Bartabwa division) and Kongelbei (Marigat district) water pans – **ALRMP**.
- Rehabilitation of Chemorongion (Mochongoi division), Chesesoi and Kaptuya (East Pokot) and Tibingar (Marigat division) Boreholes – **ALRMP/ CDF/ AIC**.
- Distribution of supplementary food in the project area – **ALRMP/ UNICEF**.
- Peace-building initiatives within the district of the project area by various stakeholders i.e. the **PSC, DPC, DSC, World vision, Community Elders, Youth groups, Political leaders, Pastors and ALRMP**.

Food aid

- The **EMOP** relief food distribution phase 2 commenced in late May 2009 targeting the following population in the districts: - East Pokot – **47,423 (GFD)**, Baringo Central – **3,476 (FFA)**, Marigat – **13,975 (FFA)** and Baringo North – **23,288 (FFA)** persons.

1.0 Environmental indicators (Stability)

1.1 Rainfall



Source: ALRMP rain gauge data stations

- The district received 48.25 mm average rainfall from four recording stations during the month compared to 145.6 mm from 5- recording stations the previous month. This was not normal at this time of the year as this is known to be the long rains season. However the spell of the dry season has extended more than expected.

1.2 Condition of natural vegetation and pasture

- The quantity of forage in mixed farming and irrigated cropping livelihood zones improved owing to the little showers received during the month while it remained poor in the pastoral and agro-pastoral livelihood zones.
- The quality of the available pasture was fair.
- The average distance to grazing areas decreased from 8.4 km the previous month to 7.6 km.

1.3 Water sources and availability

- There was improvement in water availability during the last four weeks following the little showers received.
- The main water sources were pans and dams, natural rivers, traditional river wells, boreholes, and lakes.
- Distance to the nearest water source during the month decreased to an average of 3.8 km from 4.3 km the previous month for most of the households.

1.4 Emerging issues

- The little showers received during the month improved the browse and pasture conditions in the district though it was minimal owing to erratic rainfall.
- The distances to water sources and pastures also decreased. Majority of the satellite herds were still held up into the dry season grazing points (Marakwet, Turkana, West pokot, Samburu and Laikipia west districts).
- Goats, cattle and sheep continued to die due to the effects of the extended drought in the district.
- Crocodiles preying on goats in Sirata community (Mukutani division).

1.5 Implications on food security

- Improving browse & pasture and decreasing distances to water have a gain to household food security for the pastoralists.

2.0 Rural economy indicators (Food availability)

2.1 Livestock production

2.1.1 Livestock body condition

- Livestock body condition was fair for both small stock and cattle in mixed farming and irrigated cropping livelihood zones while it remained poor in pastoral and agro-pastoral livelihood zones.
- Goats, cattle and sheep continued dying in these zones due to the effects of the drought experienced.
- This was not normal at the time of the year owing to extended period of the dry season.

2.1.2 Livestock diseases

- Premature births in goats and cattle were reported in Yatya community (Kipsaraman division) and Kinyach community (Bartabwa division) respectively.
- ECF upsurge was reported in Ng'ambo (Marigat district), Ngoron (Kolowa division), Kinyach (Bartabwa division) communities.
- There was oof outbreak in the district.
- Red water upsurge was reported in Kamrio community (Nginyang division)
- Goat and sheep pox outbreak was reported in the district.

2.1.3 Milk production

- Milk production declined in the district owing to post effects of drought.
- This was not normal at the time of the year as the dry season persisted.

2.2 Crop production

2.2.1 Condition and timeliness of various crop production activities

- Agro-pastoralists reported crop failure due to lack of rain.
- This was not normal at the time of the year as this is supposed to be the long rains season.

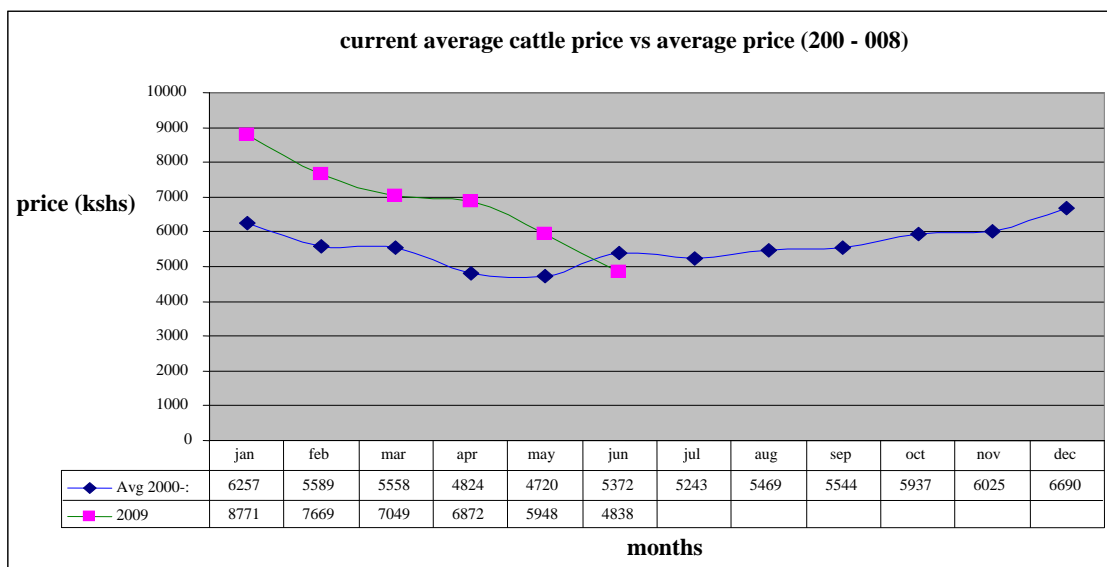
2.3 Implications on food security

- Milk production at household level declined yet this is the food depended upon by the pastoralists and children.
- Goats, cattle and sheep are dying due to drought stress. This was a major threat to food security at the household level. Relief foods need to be given to the population continuously until the situation normalises.
- Market prices of cereals and legumes remained high and availability in the markets was rare.

3.0 Access to food

3.1 Livestock marketing

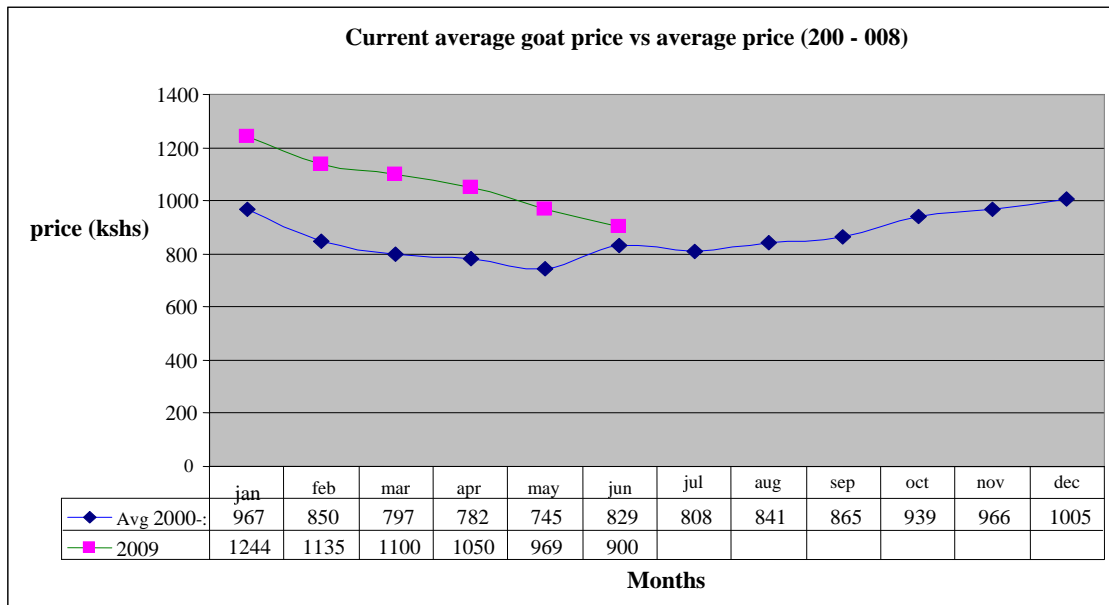
3.1.1 Cattle prices



N = 480 HH

- The average cattle price showed a decrease from Ksh5,948 the previous month to Ksh4,838.
- The decrease was not normal at the time of the year when the price of cattle is expected to rise since it is normally a rainy season. The price was, however, lower than the long term average.
- This was attributed to the poor body condition owing to insufficient pasture during this period and lack of buyers during the month. This had a negative impact on household food security.
- Mukutani division had the highest average cattle price at Ksh6,000. This was attributed to access to adequate buyers. Bartabwa division had the lowest average price of Ksh 3,500 due to low demand and poor body condition.

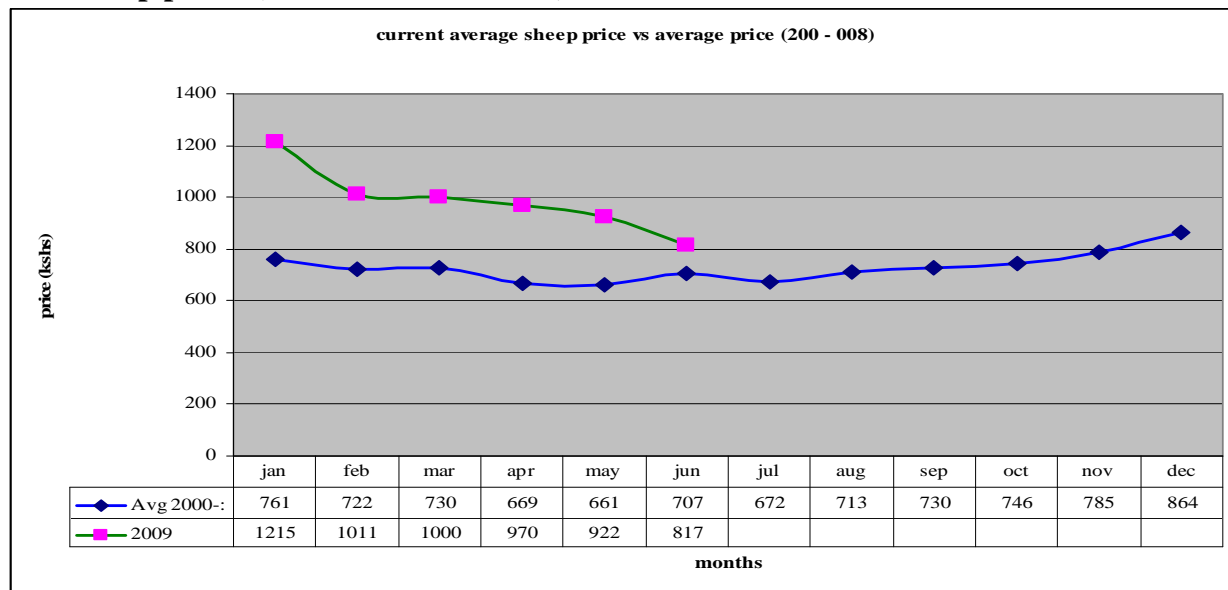
3.1.2 Goat prices (From household level)



N = 480 HH

- The average price of goats decreased from Ksh969 in May to Ksh900, showing a declining trend.
- The price was, however, slightly above the long term average. The decrease was attributed to lack of buyers and poor body condition of the animals. This had a negative impact on household food security.
- Marigat division had the highest goat prices at Ksh1,431 due to high demand and access to peri-urban prices while Nginyang division had the lowest price average of Ksh715 owing to poor body condition and lack of buyers during the month.

3.1.3 Sheep prices (From household level)



N = 480 HH

- The average sheep price decreased from Ksh922 in May to Ksh817 in June showing a down trend.
- The price decline was attributed to lack of buyers during the month and poor body condition. The price was, however, slightly higher than the long term average as shown on the graph. This had a negative impact on household food security.
- Tangulbei division had the highest sheep price of Ksh1,200 owing to better breeds while Kipsaraman division had the lowest price of Ksh600 as a result of poor body condition of the animals, coupled with lack of buyers.

3.2 Livestock sales

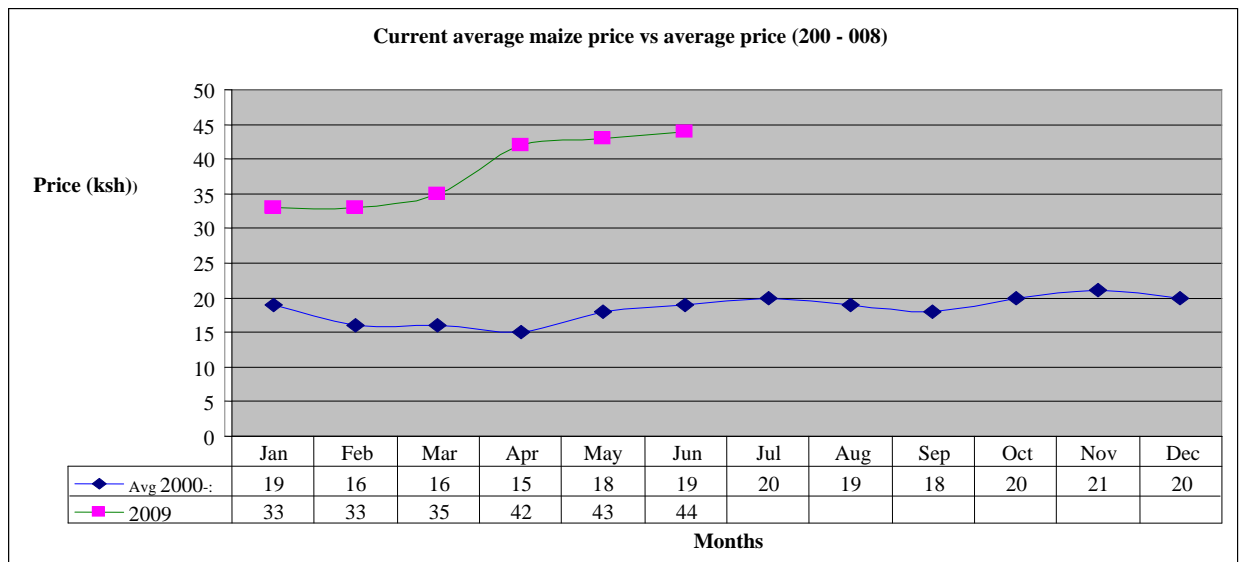
- The volume of livestock sales decreased in the month compared to the previous months as a result of lack of buyers during the month.
- Goats, sheep, poultry, donkeys and cattle were the main livestock offered for sale at the markets.
- Pastoral, agro-pastoral and irrigated cropping livelihood zones had the highest sales as they depend on their livestock sales as the sole means of getting household needs while mixed farming livelihood zone had the lowest sales owing to having other sources of income e.g. business, food stock, employment and casual labor e.t.c. to depend on.
- The level of sales was not normal at the time of the year as there was lack of buyers during the month.

3.3 Milk consumption

- Milk consumption declined drastically in all the livelihood zones.
- Compared with the previous month the milk consumption at household level decreased owing to the effects of the extended drought period.
- This had a negative impact on food security at household level, especially for the children under five years.

3.4 Crop prices (market prices)

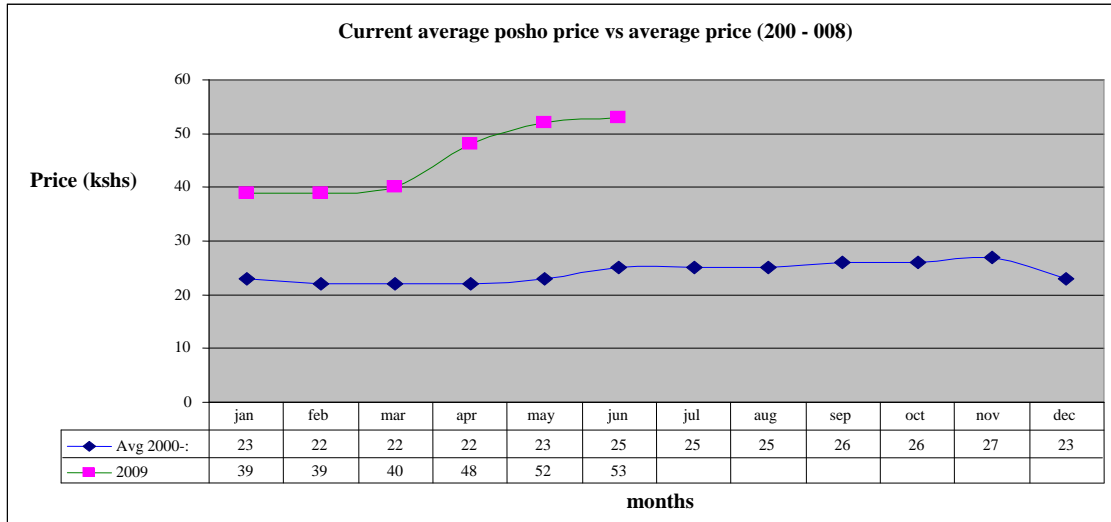
3.4.1 Maize prices



N = 480 HH

- The average maize price during the month was Ksh44 per kilo, Ksh1.00 more than the previous month (highest price in the market was Ksh70 per kg).
- The average price was more than double the long term mean owing to scarcity of the food at the markets. However, the demand picked up in the markets because of famine stress that affected more of the population.
- Inadequate supply of maize to the local markets from agro- pastoralists within the district and also neighboring districts is the cause of price increase.
- As in the previous month, maize prices were much higher in the pastoral, Agro-pastoral and irrigated cropping livelihood zones than in the mixed farming livelihood zone.
- The average maize price per kg is not normal at this time of the year owing to the scarcity of the food.

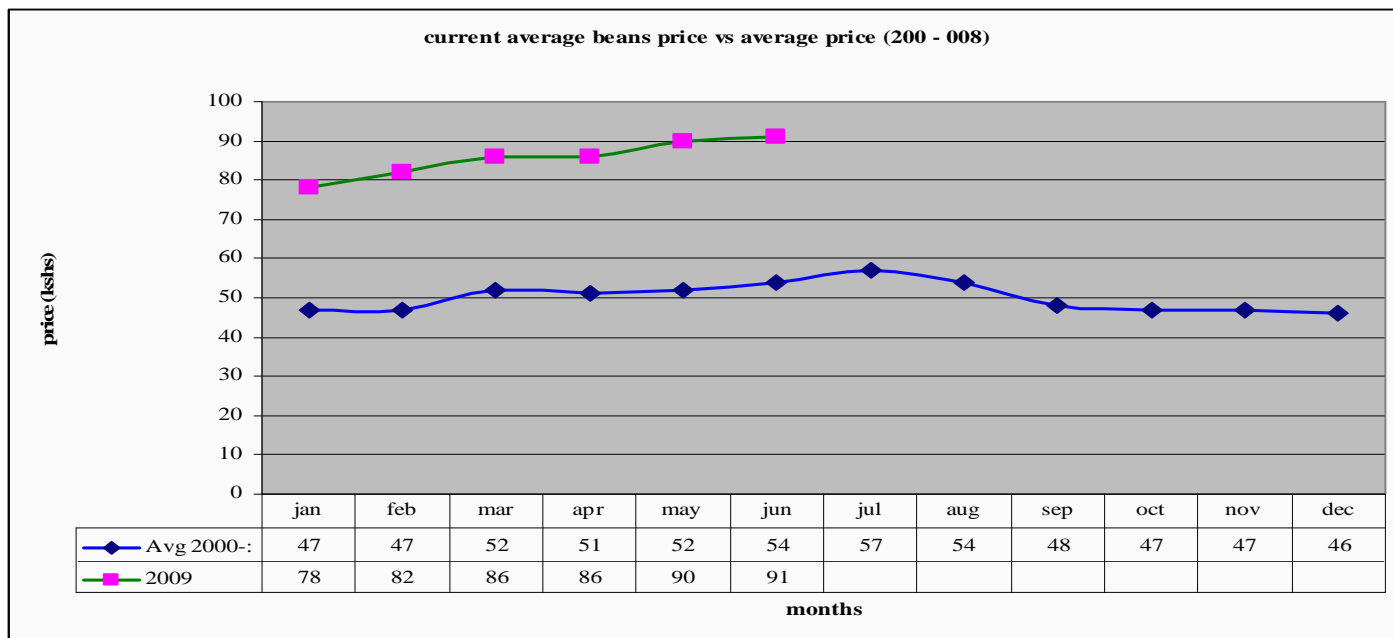
3.4.2 Posho (maize meal)



N = 480 HH

- The average price of posho was Ksh53 per kilo, Ksh 1 more than the previous month (highest price in the market was Ksh80 per kg).
- The average price increased due to scarcity of the food commodity in to the local markets.
- The price was more than double the long term means hence eroded the purchasing power of the pastoralists as they had to sell a lot of animals to meet the food demand.
- Posho prices were much higher in the pastoral, Agro-pastoral and irrigated cropping livelihood zones than in the mixed farming zone because the three zones were depending on purchase of the commodity from their local markets, which is normally dictated by it's availability unlike the mixed farming who is a producer and access it easily.
- The price of posho was not normal at the time of the year owing to scarcity of maize in the markets.

3.4.3 Beans prices



N = 480 HH

- The average price of beans during the month was Ksh91 per kilo, Ksh1.00 more than the previous month, highest price in the market was Ksh120 per kg.
- The price was almost double the long term mean.
- The average price increased due to scarcity of the food commodity in the markets within the district and also from the neighboring districts.
- However, the prices were too high at the moment to cope with the purchasing power of the pastoralists. This was a huge threat to household food security.
- Beans prices were higher in the pastoral livelihood zone than in the irrigated cropping and agro- pastoral zones.
- Beans prices were not normal at the time of the year owing to their erratic availability in the markets.

3.5 Income

3.5.1 Crops income

- Agro-pastoralists reported crop failure in the project area due to lack of rainfall, hence income was derived from crops.

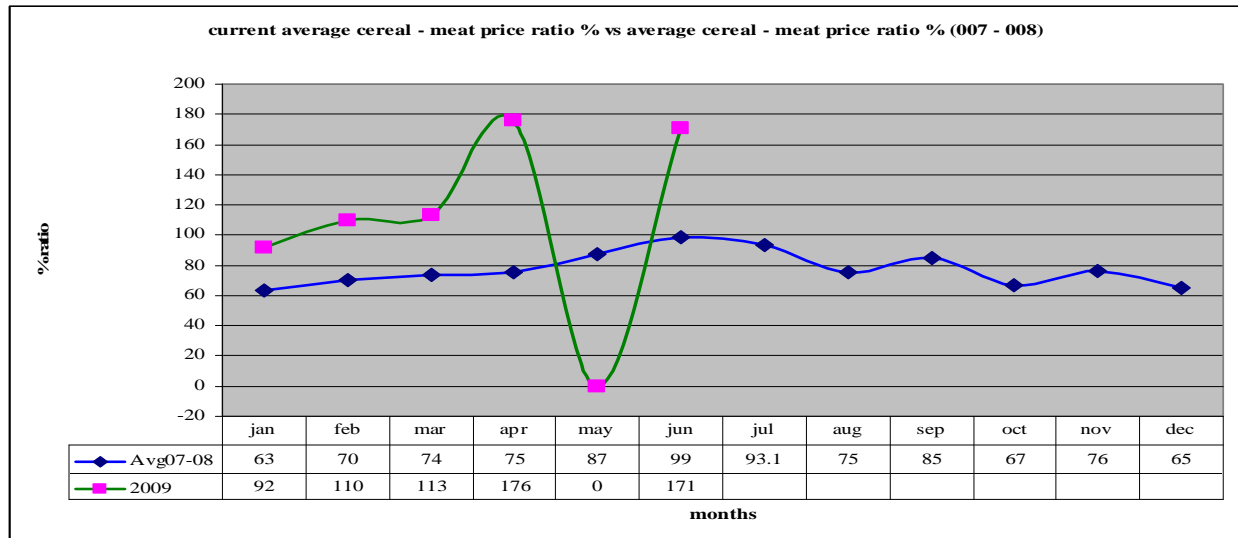
3.5.2 Livestock income

- Income from livestock sales was lower than that of the previous month due to reduced number of animals sold in the markets. This was because of lack of external buyers during the month who normally purchase large number of animals and offer better prices.
- The income obtained from the livestock was not normal at the time of the year because of the external buyers who did not come to the markets during the month.

3.5.3 Other income

- Casual labor was another major source of income during the month with approximately 1/3 of the household's members engaged as casual laborers, followed by sale of fish, sale of charcoal, sale of wood products and petty trade (local beer brewing).
- The average daily wage rate per casual for the month was Ksh101, less than that of the previous month, something so meager to meet the daily household's needs.
- Most of the trade in charcoal, wood products and petty trading was recorded in Pastoral, irrigated cropping and Agro-pastoral livelihood zones. This reflected unavailability of livestock and farm incomes for the households in these zones.

3.6 Terms of trade (cereal: meat price ratio – purchasing power) (market based)



N = 450 HH

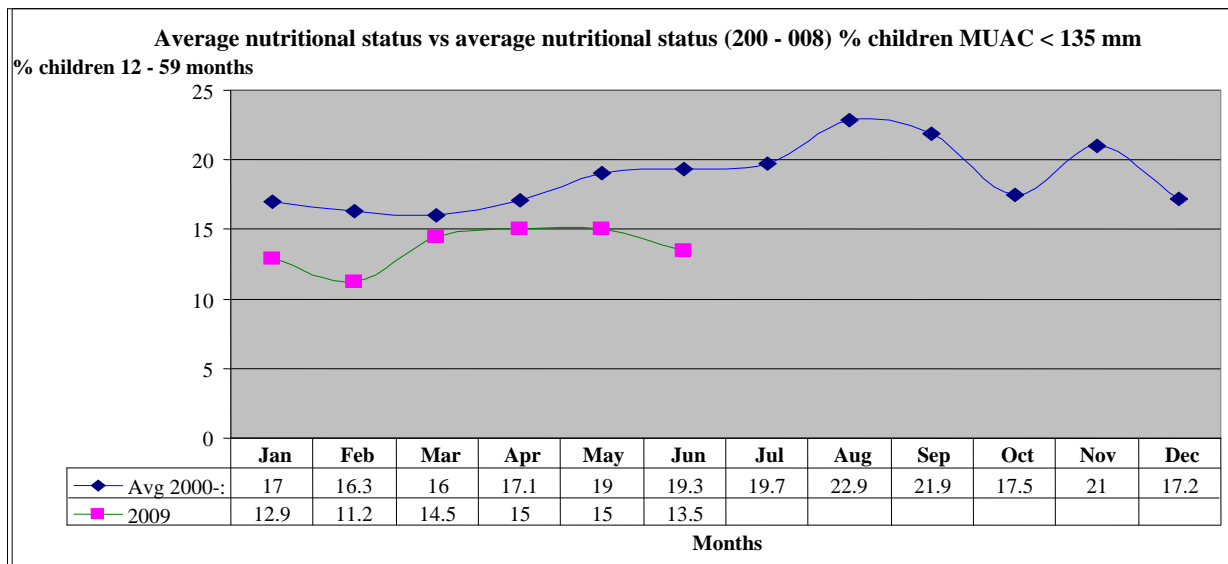
- Terms of trade worsened during the month.
- The price ratio remained worse in pastoral, agro-pastoral and irrigated cropping livelihood zones because of low prices offered for livestock sales by the traders as compared to high prices of cereals. The ratio was lower in mixed farming livelihood zone owing to fair accessibility of cereals and better livestock prices in this area.
- The cereal: meat price ratio was not normal at the time of the year. For a pastoralist to purchase 90 kg sack of posho at an average price of Ksh4,800 market price, he/ she had to sell 6 (six) goats at an average of Ksh900.
- This eroded the purchasing power of the people, hence depleting the asset level of the pastoralists.

3.7 Implications on food security

- The low prices of livestock offered coupled with the erosion of the peoples' purchasing power in the project area has depleted the asset level of the pastoralists through high number of animals sold to purchase foods, hence a threat to the household food security.

4.0 Human welfare indicators (Utilisation of food)

4.1 Nutrition status



N = 2,117 children

- The nutrition status of children below five years (based on MUAC<135mm measurement) improved slightly during the month.
- The percentage of those rated at risk of malnutrition dropped to 13.5% from 15.0% the previous month.
- This was attributed to issuance of supplementary foods for children at the household level under the EMOP relief food distribution.
- However, the status is likely to decline if milk production does not improve to supplement the children's nutrition.
- Highest rates were recorded in the pastoral, irrigated cropping and agro-pastoral livelihood zones and lower in mixed farming livelihood zone.
- The nutrition status was better than the long term mean.

4.2 Health

- High incidences of malaria were reported during the month and they were severe.
- Enteric fever upsurge was reported in Ng'ambo, Sirata communities (Marigat district) for two months now as a result of consuming dirty river water.
- Diarrhea cases were reported in Nangarua community (Churo division).

4.3 Flagged areas

- Pastoral, agro-pastoral and irrigated cropping livelihood zones reported the highest malnutrition rates. These areas require particular attention.

5.0 Current interventions

5.1 Non-food interventions

- Excavation of Apuketin and Kamrio (East Pokot), Bukon (Bartabwa division) and Kongelbei (Marigat district) water pans – **ALRMP**.

- Rehabilitation of Chemorongion (Mochongoi division), Chesesoi and Kaptuya (East Pokot) and Tibingar (Marigat division) Boreholes – **ALRMP/ CDF/ AIC**.
- Distribution of supplementary food in the project area – **ALRMP/ UNICEF**.
- Peace-building initiatives within the district of the project area by various stakeholders i.e. the **PSC, DPC, DSC, World vision, Community Elders, Youth groups, Political leaders, Pastors and ALRMP**.

5.2 Food aid

- The **EMOP** relief food distribution phase 2 commenced in late May 2009 targeting the following population in the districts: - East Pokot – **47,423 (GFD)**, Baringo Central – **3,476 (FFA)**, Marigat – **13,975 (FFA)** and Baringo North – **23,288 (FFA)** persons.

5.3 Other coping strategies

The coping mechanisms employed by the vulnerable population in all the livelihood zones during the month were;

- Migration of livestock in search of pasture.
- Borrowing food from relatives.
- Reduction in size of meals and skipping some.
- Eating wild foods and performing casual labour and petty trade.

These strategies were employed by majority of the sampled households while a few of the households sold their livestock.

Compared to previous months, the situation requires Emergency Operation of relief food distribution.

6.0 Recommendations to DSG and KFSM

- **The veterinary department / agencies** should step up support to the livestock health sub-sector through vaccination and treatment of clinical cases. In particular, more effort should be directed at investigating cases of premature births in goats and cattle in Yatya and Kinyach communities in Kipsaraman and Bartabwa divisions respectively. Upsurge of red water was reported in Kamrio community (Nginyang division), ECF in Ngambo, Ngoron and Kinyach communities in Marigat, while goat and sheep pox outbreaks were reported in Kolloa and Bartabwa divisions respectively.
- **The GOK and other aid agencies** to put more effort in ensuring that communities in East Pokot, North Baringo, Marigat and Baringo central districts are given continuous relief food supplies (GFD) and supplementary food for children until the stress situation normalises as malnutrition cases are rising, prices of food commodities are rising, animals are dying due to drought effects hence people cannot cope with the stress, also milk production from animals declined drastically due to the drought effects that has persisted for a long period.
- There is need to strengthen conflict prevention and peace-building initiatives to maintain the already achieved level of peace and further reduce it to the lowest level along the borders of East Pokot, Baringo, Marakwet, Turkana, Laikipia West and Samburu districts to enhance peaceful co-existence.

- **The MOH** should make efforts to supply more anti-malarial drugs in all the rural health facilities that are far from the district hospitals to cope with Malaria upsurge at the moment and investigate cases of enteric fever upsurge in Ng'ambo and Sirata communities in Marigat district.
- **The District Game Warden** to put more efforts in ensuring that crocodiles preying on goats in Sirata community (Mikutani division) are contained to prevent daily loss of livestock.