



**OFFICE OF THE PRIME MINISTER
MINISTRY OF STATE FOR THE DEVELOPMENT OF NORTHERN KENYA AND OTHER ARID LANDS
ARID LANDS RESOURCE MANAGEMENT PROJECT II**

DROUGHT MONTHLY BULLETIN, JUNE 2009

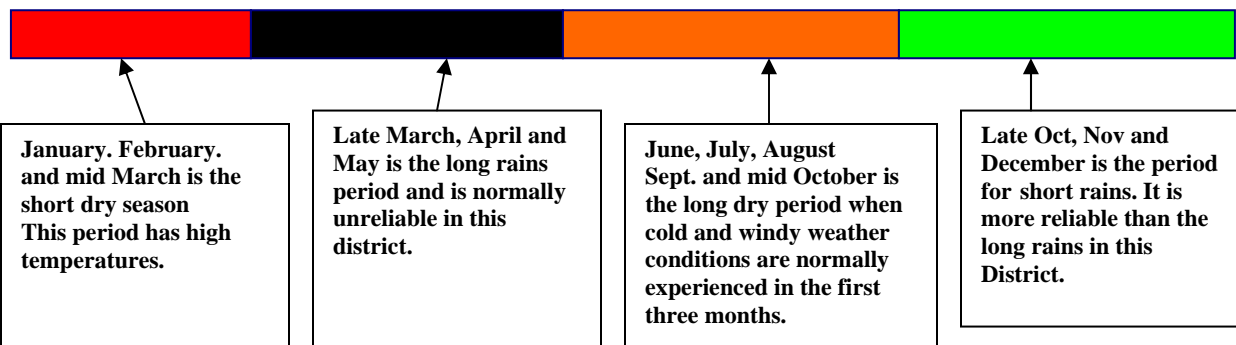
Garissa District

Warning Stages



Livelihood Zone	Warning stage	Trend
Agro-pastoral	Alarm	Worsening
Formal employment/ Casual labor.	Alarm	Worsening
Pastoral- Cattle/Sheep.	Alarm	Worsening
Pastoral- all species	Alarm	Worsening
Pastoral: Camels and Goats	Alarm	Worsening
District	Alarm	Worsening

Seasonal Calendar



Situation overview

- No rainfall was recorded during the month except for an extension of Coastal showers experienced in the southern parts of the district mainly Galmagala division.
- The weather was mainly characterized by low temperatures with a lot of wind. This was normal for the time of the year.
- Pasture and browse got depleted in most parts of the district due to poor rainfall. Most of the vegetation was dry and there were no fallen leaves even for goats.
- Boreholes, River Tana, Benane springs, and shallow wells of Galana Gof of Modogashe remained the main sources of water for both human and livestock in the district. Most of the water pans in the district either dried up or were about to dry up.
- Water accessibility for households continued to diminish compared with the preceding months. Most of the households had to trek long distances for water. The distances between households and water sources continued to increase, with average distance recorded at 30km.
- Livestock access to water worsened considerably compared with the preceding month as most of the large water pans either dried up or were about to dry up due to the failure of the long rains.
- All grazing areas around large water pans in the interior and permanent water sources were completely depleted of desirable or palatable vegetation and thus livestock trekked about 35km from pasture/browse areas to water sources.
- No cases of conflict/human displacement / insecurity were reported in the course of the month under review.
- Most of the livestock in the North, especially Benane and Danyere moved to the eastern part of the district.
- In the East, livestock concentrated around the boreholes in Liboi, Kulan and Damajale making these the highest livestock concentration points. This included livestock from Isiolo district. In the South (Bura and Galmagalla) livestock concentration was around River Tana and individual water pans.
- The body condition of livestock continued to worsen, especially for cattle and sheep due to depleted pasture/browse in the district. This was further exacerbated by long trekking distances to water sources.
- There was no outbreak of notifiable livestock diseases except cases of contagious caprine pleuropneumonia. However, tick-borne disease was a threat to livestock since their resistance was weakened by poor and inadequate pasture/browse. Vaccination for same was carried out.
- Milk production in the district continued to reduce due to worsening body condition of livestock and pasture/browse deficiency.
- Cattle prices continued declining due to weakening body conditions and reduced demand. The average price was Ksh7565 compared to Ksh9,372 in May. The prices of goats reflected a decline at ksh1,359 from Ksh1, 441 in May. This was attributed poor body condition due to diminishing browse. Sheep prices also declined to Ksh938 from Ksh 968 in May due to depleted pasture.

- The nutrition status of children below five years continued to deteriorate, with the percentage of those rated at risk of nutrition rising to 12.2% from 10.5% in May. This was due to reduced milk availability and lack of food for most pastoral households.

Current interventions

Non-food interventions

- Repair, servicing and procurement of equipment for livestock boreholes continued throughout the month.
- Water trucking continued in some centres that had acute water shortages.
- Disease surveillance, vaccination and livestock treatment continued throughout the month.
- Njaa marufuku Kenya project and national agriculture and livestock extension programme by Ministry of Agriculture continued to be implemented in the district.

Food aid

- EMOP relief food distribution covers a population of 92,288 beneficiaries.
- #### **COPING STRATEGY**
- Practicing of petty trade in livestock watering center is becoming a booming business.
 - Migration of herd for pasture/browse
 - Credit and borrowing continued to become popular
 - Household and herd separations are the last resort being practiced by pastoralist.

Recommendations to DSG and KFSM

- Give more attention to livestock boreholes repair, servicing and procurement of equipment.
- Support small-scale farms along the River Tana.
- Continue to support livestock disease surveillance, treatment and vaccination activities in the district.
- Continue to support training and financing of micro-projects for youth and women groups in the district.
- Pay more attention to support agricultural and livestock extension services.
- Support water trucking to centres with acute water shortage.
- Continue to capacity build pastoral communities on peace building and conflict resolution.
- Relief food to target more beneficiaries as most of the population continue to experience the effects of drought.
- Provide livestock feeds and supplementary food to the worst affected areas.
- Continue supporting small-scale farms along River Tana in terms of procuring farm inputs.
- Continue to support livestock, disease surveillance and treatment in the district.
- Continue to finance micro-projects for youth, women groups and communities in the urban and pastoral zones respectively.

- Mobilise communities and create awareness of the looming drought.
- More support should be given to extension services both in Health, Agriculture and Livestock Development in the district.

1.0 Environmental indicators (Stability)

1.1 Rainfall

- There was no rainfall realized in the month. However an extension of Coastal showers was experienced at the southern of the district mainly Galmagalla division.
- Temperatures are low with a lot of wind blowing during the month.

1.2 Condition of natural vegetation and pasture

- Pasture and browse was getting depleted in most parts of the district.
- Most of the vegetation was dry and there were no fallen leaves even for goats.
- Galmagalla area was slightly green, with growth of herbs and browse for goats/sheep available.

1.3 Water sources and availability

1.3.1 Use of water sources

- Boreholes, River Tana, Benane springs, large water pans and shallow wells of Galana Gof in Modogashe remained major sources of water for both human and livestock in the district.
- Most of the water pans in the Northern region either dried up or were about to dry up. The colour of the water changed, making it unfit for human consumption.
- Most of the livestock concentrated around boreholes in the East, with some crossing over the border to Somalia.

1.3.2 Household accessibility to water

- Water access for household continued to diminish compared with the preceding months.
- Most of the household had to trek long distances for water. The distances between households and water sources continued to increase. The average distance was 30km.
- Some of the households got separated from their livestock as the dry season progressed.

1.3.3 Livestock accessibility to water

- Livestock access to water worsened considerably compared with the preceding month.
- Most of the large water pans either dried up or were about to dry up due to the failure of the long rains. All grazing areas around large water pans in the interior and permanent water sources got completely depleted of desirable or palatable

vegetation and thus livestock trekked about 35km to access water from pasture/browse areas.

1.4 Emerging Issues

1.4.1 Insecurity/Conflict/ Human displacement

- No conflict over natural resource utilisation or human displacement was reported in the course of the month under review.
- However, the security situation remained tense along the Kenya/Somalia border.
- However, security surveillance was high along the border.

1.4.2 Migration

- Most of the livestock in the North, especially Benane and Danyere moved to the eastern part.
- In the East, livestock was concentrated around the boreholes of Liboi, Kulan and Damajale, making these the highest livestock concentration points, inclusive of livestock from Isiolo district.
- In the South (Bura and Galmagalla) livestock concentration was around River Tana and water pans.

1.4.3 Implications on food security

- Decreased livestock prices, reduced water availability and depleted pasture/browse led to deteriorating livestock body condition, impacting negatively on food security in the greater Garissa district.

2.0 Rural economy indicators(food availability)

2.1 Livestock production

2.1.1 Livestock body condition

- The body condition of livestock continued to worsen, especially cattle and sheep compared with the preceding month.
- This was due to depleted pasture/browse in the entire district which was exacerbated long by trekking distances for water.

2.1.2 Livestock health and diseases

- There is no outbreak of a notifiable livestock diseases except cases of contagious caprine pleuropneumonia.however tick-borne diseases are a threat to the livestock since their resistance had been weakened by poor and inadequate browse and pasture.

2.1.3 Milk production

- Milk production in the entire district continued to decline compared with the preceding month.
- This was attributed to deteriorating livestock body condition due to inadequate pasture/browse.

2.2 Crop production

2.2.1 Timeliness and condition of various crop production activities

- Vegetables and fruits were produced in irrigated farms along River Tana.
- Some farmers also embarked on growing of maize alongside other crops.

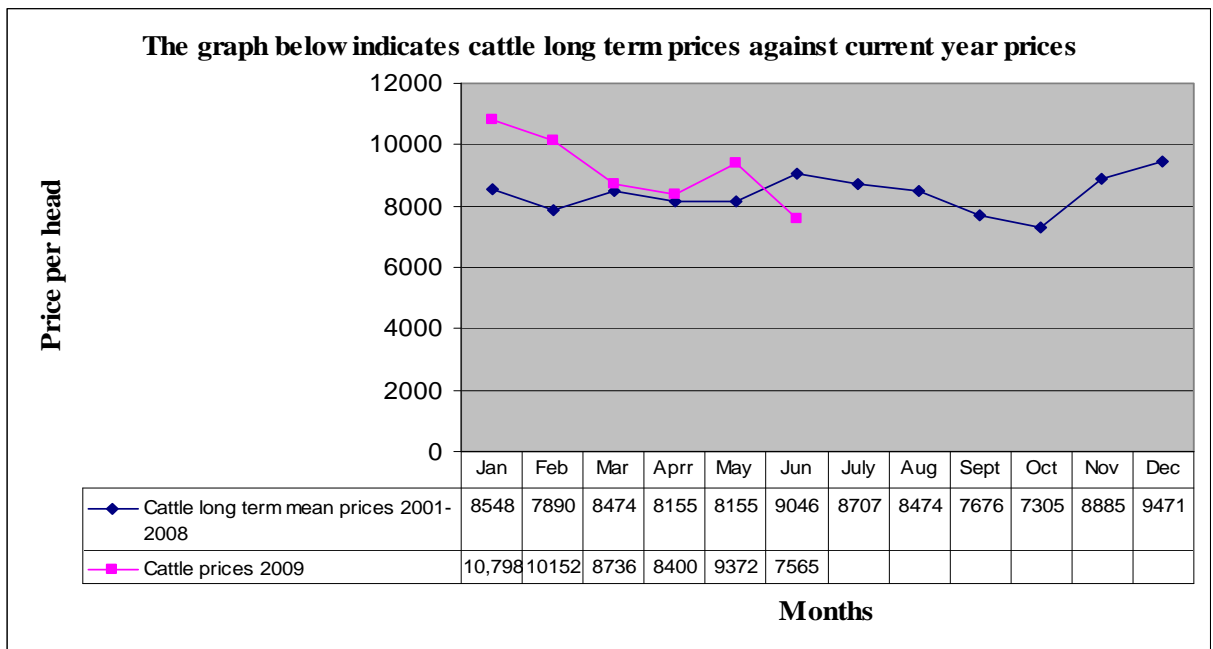
2.2.2 Pests and crop diseases

- No crop pests or diseases were reported during the course of the month under review.

3.0 Access to food

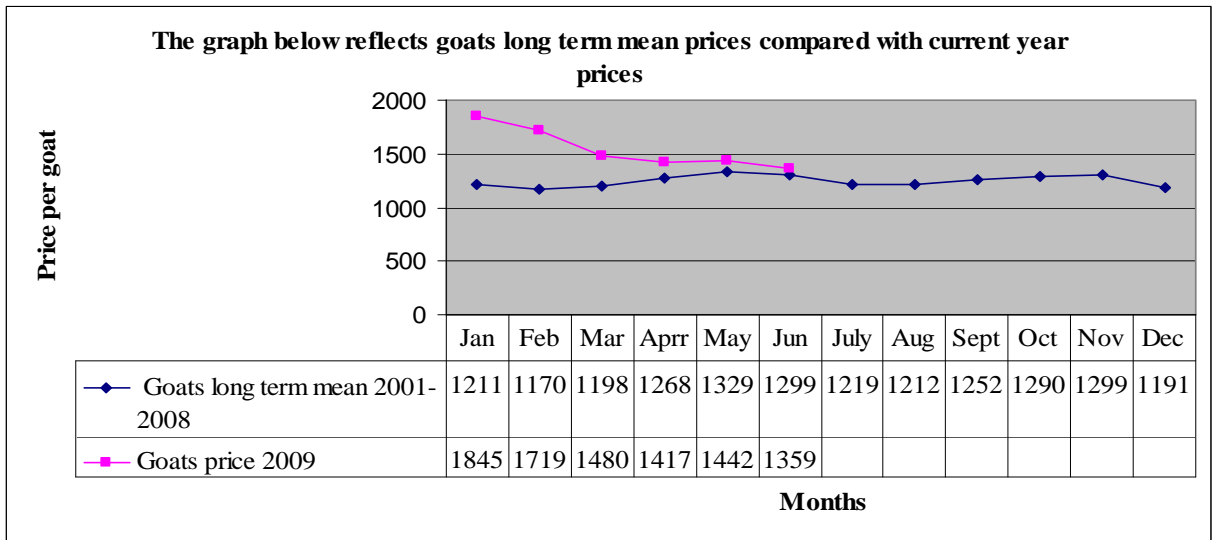
3.1 Livestock marketing

3.1.1 Cattle prices



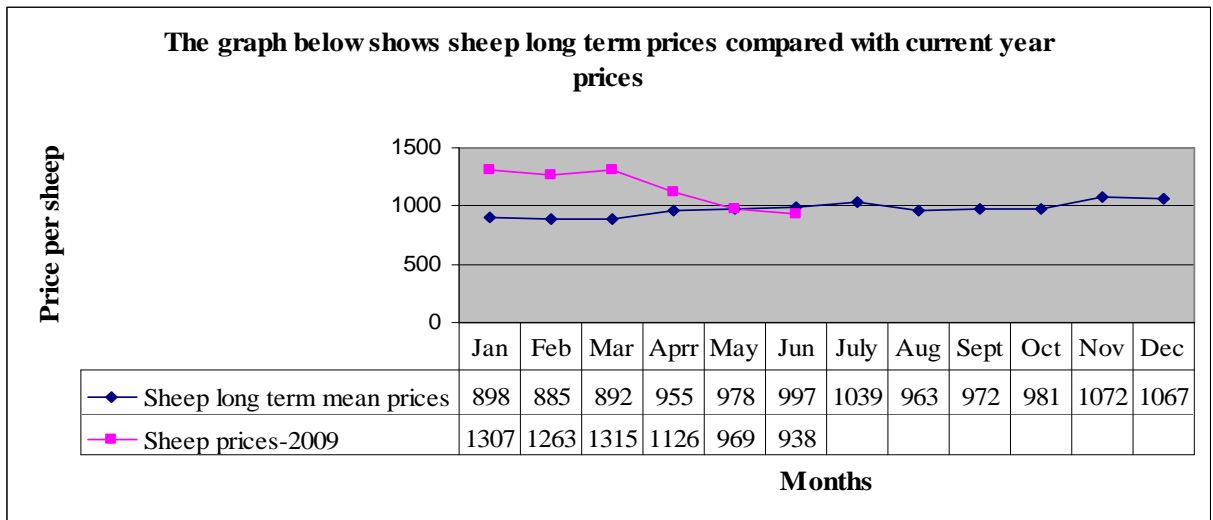
- Cattle prices continued to show a declining trend due to weakening body condition and reduced demand following prevailing economic crisis.
- The average price was Ksh7,565 down from Ksh9,372 in May.

3.1.2 Goats prices



- The prices of goats declined compared with the preceding month.
- The average price was Ksh1,359, down from Ksh1,441 in May.
- This was attributed to diminishing browse availability.

3.1.3 Sheep prices



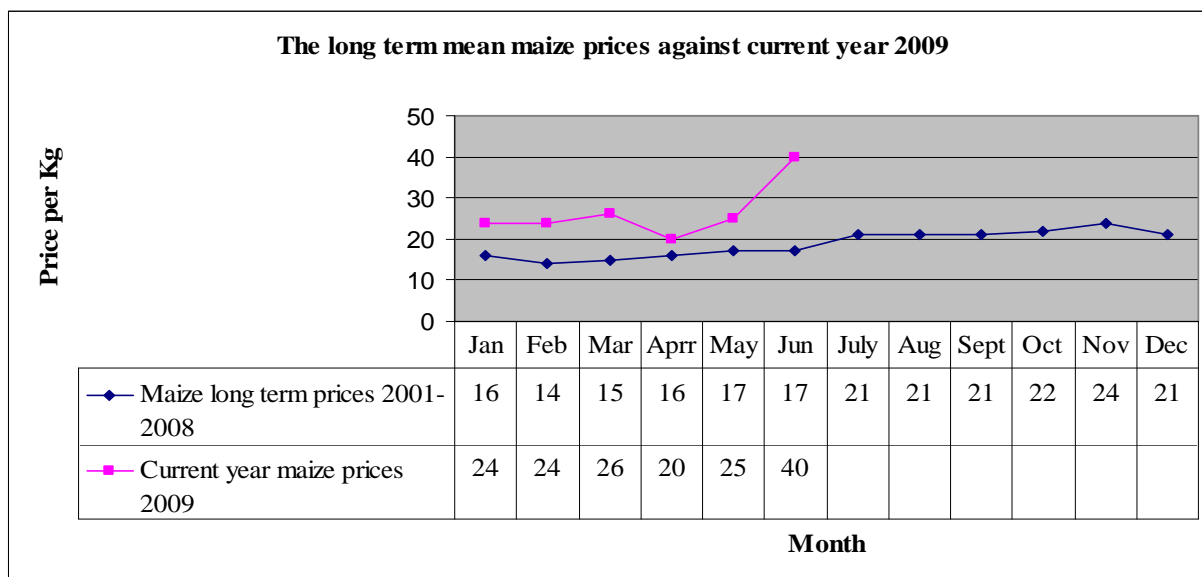
- Sheep prices continued to decline compared with the preceding month.
- The average price was Ksh938, down from Ksh968 in May.
- The decline was attributed to poor body condition due to depleted pasture.

3.2 Livestock sales

- Livestock sales increased compared with the preceding month.
- This was due to reduced livestock prices and livestock products, hence high demand for cereals and other essential food commodities.

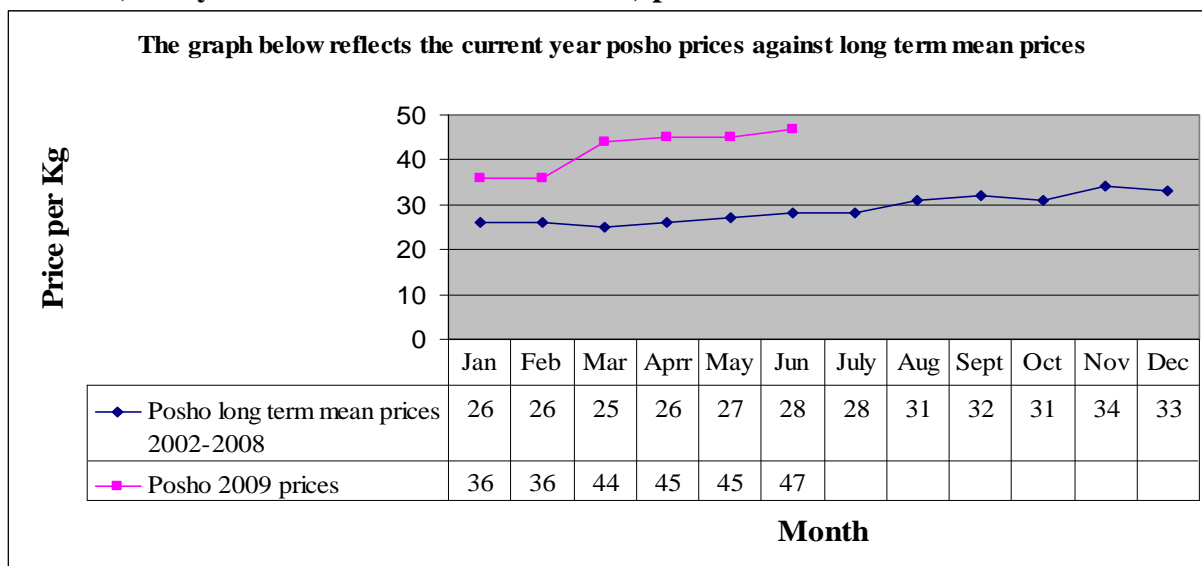
3.3 Crop prices

3.3.1 Maize prices



- Maize prices continued to increase compared with the preceding month.
- The average price of maize was Ksh40 per kilo, up from Ksh25 in May.
- The increase was due to acute shortage of maize at household level.

3.3.2 Posho (locally milled and refined maize meal) prices



- The prices of posho and refined maize meal increased slightly.

- The average price was Ksh47 per kilo, up from Ksh45 in May.
- The increase in price of essential food commodities impacted negatively on the purchasing power of households.

3.3.3 Prices of other food commodities

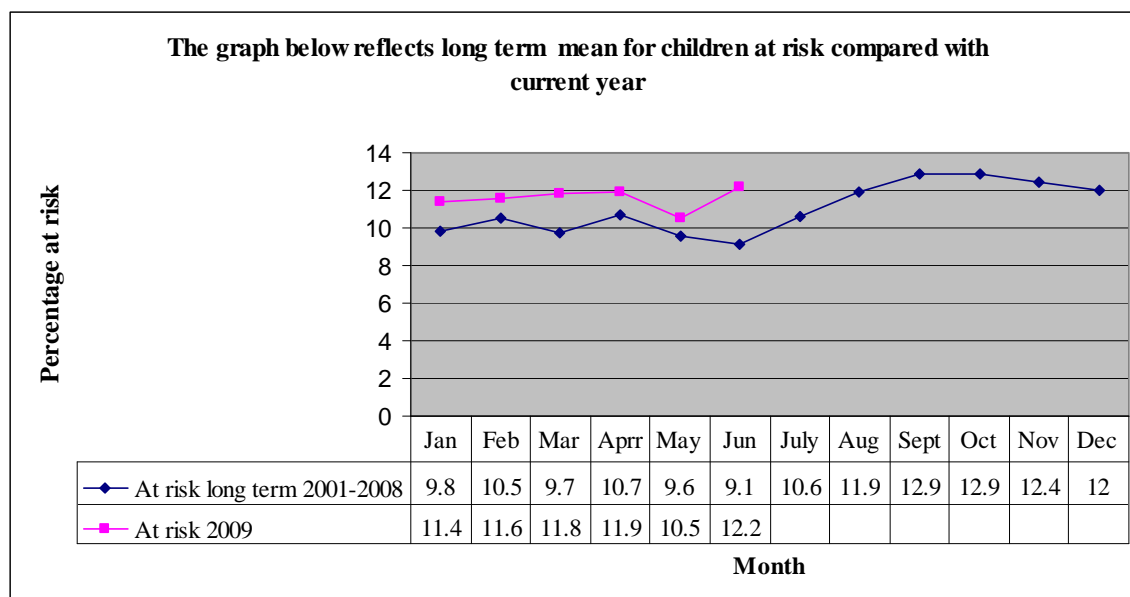
- The prices of beans remained stable, while sugar and cooking oil increased compared with the preceding month.
- A litre of cooking oil retailed at Ksh135 while sugar sold at Ksh100 per kilo.

3.4 Implications on food security

- High food price (cereal and other food items), reduced pasture/browse for livestock and reduced livestock products in the district reflects a negative food security implications.

4.0 Human welfare indicators

4.1 Nutrition status



Number of children 1,418

- The nutrition status of children below five years continued to deteriorate compared with the preceding month.
- The percentage of those rated at risk of malnutrition rose to 12.2% from 10.5% in May.
- The decline was attributed to reduced milk and inadequate food in most of pastoral households.

4.2 Human health

- No human disease outbreak was reported in the district.
- However, malaria remained a threat in the district.

4.3 Flagged areas

There were no flagged areas but locations around the refugee camps are likely to be affected due to recent influx from Somalia.

5.0 Current interventions

5.1 Non-food interventions

- Repair, servicing and procurement of equipment for livestock boreholes continued throughout the month.
- Water trucking continued in some centres that had acute water shortages.
- Disease surveillance, vaccination and livestock treatment continued throughout the month.
- Njaa marufuku Kenya project and national agriculture and livestock extension programme by Ministry of Agriculture continued to be implemented in the district.

5.2 Food aid

- EMOP relief food distribution covers a population of 92,288 beneficiaries.

5.3 Coping strategies

- Practicing of petty trade in livestock watering center is becoming a booming business.
- Migration of herd for pasture/browse
- Credit and borrowing continued to become popular
- Household and herd separations are the last resort being practiced by pastoralist.

6.0 Recommendations to DSG and KFSM

- Give more attention to livestock boreholes repair, servicing and procurement of equipment.
- Support small-scale farms along the River Tana.
- Continue to support livestock disease surveillance, treatment and vaccination activities in the district.
- Continue to support training and financing of micro-projects for youth and women groups in the district.
- Pay more attention to support agricultural and livestock extension services.
- Support water trucking to centres with acute water shortage.
- Continue to capacity build pastoral communities on peace building and conflict resolution.
- Relief food to target more beneficiaries as most of the population continue to experience the effects of drought.
- Provide livestock feeds and supplementary food to the worst affected areas.

- Continue supporting small-scale farms along River Tana in terms of procuring farm inputs.
- Continue to support livestock, disease surveillance and treatment in the district.
- Continue to finance micro-projects for youth, women groups and communities in the urban and pastoral zones respectively.