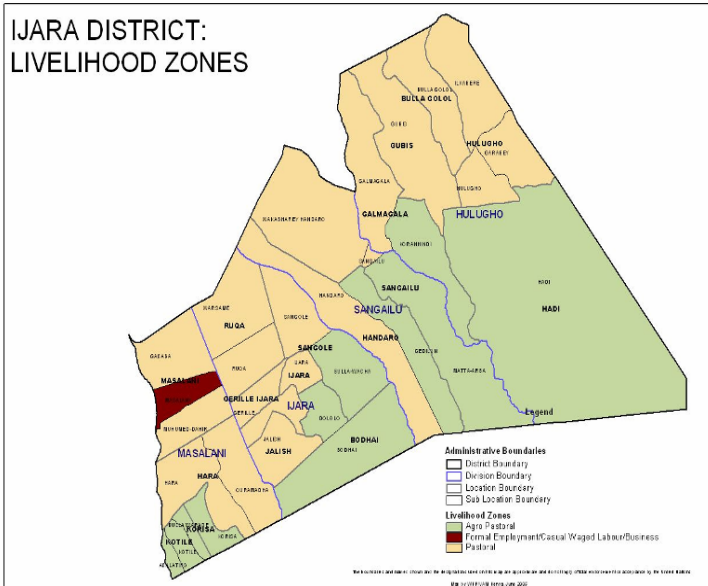




**OFFICE OF THE PRIME MINISTER  
MINISTRY OF STATE FOR THE DEVELOPMENT OF NORTHERN KENYA AND OTHER ARID LANDS  
ARID LANDS RESOURCE MANAGEMENT PROJECT II**

**DROUGHT MONITORING BULLETIN, JUNE 2009**

**Ijara District**



**Warning Stages**

Livelihood Zone	Stage	Trend
Pastoral	Alert	Improving
Agro pastoral	Alert	Improving
Formal employment/ Casual labor	Alert	Improving
District wide	Alert	Improving

**Seasonal Calendar**

<ul style="list-style-type: none"> <li>Milk yield drops</li> <li>Livestock moves towards dry season grazing zones</li> </ul>	<ul style="list-style-type: none"> <li>High milk yield</li> <li>Livestock moves towards the traditional wet grazing areas</li> <li>High calving, kiding and lambing rates</li> </ul>	<ul style="list-style-type: none"> <li>Low milk availability</li> <li>Livestock moves towards the fall back dry seasons grazing areas (Boni forest)</li> <li>Increased human-wildlife conflicts</li> </ul>	<ul style="list-style-type: none"> <li>High milk yield</li> <li>Livestock moves towards traditional wet seasons grazing areas</li> <li>High mating rates</li> </ul>								
Short Dry Spell			Long rains			Long dry spell				Short rains	
Jan	Feb	Mar	Apr	May	Jun	Jul	Aug	Sept	Oct	Nov	Dec

## **Situation overview**

- Fairly moderate rainfall was received in the second week of the month in all the livelihood zones followed by coastal tropical showers in Sangailu, Hulugho and Ijara though more intensified along Boni forest. However, the weather remained cool, windy and cloudy.
- The quality and quantity of browse and pasture improved as a result of the showers. However, satellite herds remained in the Boni forest.
- Medium and large water pans contained fair quantities of water, hence there was not much water stress in any of the livelihood zones although quality of water remained extremely poor.
- The livestock body condition and health was rated fair for all categories of livestock in all livelihood zones but with insignificant change from previous month.
- The average prices of all categories of livestock improved in all the livelihood zones. Cattle fetched the highest prices at Ksh 6,800, a 13.3% increase from Ksh 6,200 recorded in May.
- There was inward migration of livestock from Fafi district into the district during the month. Nevertheless outward migration to Tana Delta District and Lamu was sustained, with satellite herds still camping within Boni forest and Tana Delta areas.
- The water situation improved, resulting in reduced distances to sources for households. The average distance was 25km compared to 39km recorded in May.
- Livestock access to water improved and thus the average distance from grazing areas to sources dropped to 42km from 52km in May.
- Cases of CCPP were reported in shoats while CBPP and black quarter anthrax were reported in cattle in agro-pastoralist zones especially in Hulugho, Sangailu, Kotile, Dololo, Sangole and Bulto Hama. In addition Trypanosomiasis remained endemic, forcing pastoralists to spend most of their income on its control.
- The mortality rate of cattle and shoats decreased and was recorded at 6% , down from 10% in May for cattle 8.3 % down from 9.2% in May for shoats. The average birth rate for cattle during the reporting period was recorded at 14%.
- The availability of milk for consumption in all the livelihood zones continued to diminish as most of the lactating herds were moved to join livestock in satellite camps of Witu and Tana Delta.
- Compared to last reporting period, the nutrition status of children under five years improved, with the percentage of those rated at risk of malnutrition dropping to 22% from 24% in May. This was attributed to increase in milk yields, though still undermined by incidences of malaria, diarrhoea and U RTI. The most affected sentinel sites were Ijara, Aballatiro Koranhindi and Sangailu.
- Generally, the drought situation in the entire district was at alert stage and improving.

## **Recommendations to DSG and KFSM**

- Sensitise the community on nutritional and commercial value of fish.
- Strengthen outreach clinics and organise medical camps with other actors.
- KWS to strengthen measures to curb wildlife menace.
- CCBP vaccination campaigns to continue across the district. Treatment of other diseases should accompany the exercise.
- Provision of safe drinking water to prevent outbreaks of diarrhea and other communicable diseases.

- Continue to encourage and support crop farming in the agro-pastoralist zones to enhance food security in the district through programmes such as Njaa Marafuku, provision of seeds and other inputs.
- Reducing levels of malnutrition in pregnant and lactating women and children under five years through provision of supplementary food and medical awareness programmes.
- Continue to encourage implementing activities aimed at safe disposal of waste including human faecal matter across the entire district.
- Measures to combat malaria and implement good governance of water.
- Water trucking to continue in institutions such as schools, dispensaries and security posts that lie in areas hit hard by water scarcity.
- Continuing vaccination/treatment efforts should be coupled with effective disease surveillance system by the veterinary department.
- Mainstream general natural resource management issues into the district development plans to cushion residents against drought and other forms of adversities accompanying climate change.
- Promote community conservancies.
- Control bush fires as well as illegal logging in the Boni forest.
- Conduct nutritional survey and household food security assessment.
- Introduce Food For Asset(FFA) programme.

## **1.0 Environmental indicators (Stability)**

### **1.1 Rainfall**

- Moderate rainfall with uneven distribution was received in all the livelihood zones in the second week of the month followed by conventional coastal tropical showers, which were received in Sangailu, Hulugho, Bothay, Kotile and Ijara sentinel sites.
- The trend was normal as the district usually receives rainfall during the time of the year.

### **1.2 Condition of natural vegetation and pasture**

- The pasture and browse conditions showed an improving trend both in quality and quantity in all the livelihood zones.
- This had a positive impact on body condition of all categories of livestock in the district except for cattle in pastoral livelihood zone.
- The trend was normal and had a positive impact on household food security since the improved body condition, especially cattle, attracted traders and also led to increased production in terms of milk and meat.

### **1.3 Water sources and availability**

#### **1.3.1 Use of water sources**

- Pans and natural ponds are the major water source. Moreover, river Tana remained the undisputed source of water the district headquarters' residents at Masalani.
- Most of the medium and large water pans had substantial volumes of water that could sustain pastoralist for the next two weeks.
- The observed trend was normal when compared with the same period in previous years as the rains coupled with the current coastal showers had caused most of the water pans to capture substantial volumes of water. Nevertheless, of concern, remained the persistent poor quality of water in most parts of the district.

#### **1.3.2 Distance to water sources**

- The average distance to water sources from grazing areas and domestic households was 42 km, down from 52km in May.
- The distance to water sources for domestic use was 25km, down from 39km in May. The situation was below normal as the distance was expected to be 3km at the time of the year.
- The distance between pasture and water was far and had a negative impact on food security as too much time was spent on collection of water at the expense of other socio-economic activities.
- During the month the main water sources were pans/dams, while Tana River remained the undisputed source for the district headquarters in Masalani.

### **1.4 Emerging issues**

#### **1.4.1 Conflicts/ insecurity/human displacement**

- Increased human-wildlife conflict continued to be observed, with communities suspecting that swelling numbers of wildlife was as a result of displacement from Somalia and encroachment on wildlife habitats and migration routes by increased human activities in the area.
- High encroachment rates of undesirable bushes on rangelands.
- Increased tsetse fly infestation.
- Increased illegal logging activities and bushfires in the Boni forest.
- Displacement of pastoralist households and pressure created on the pasture and water resources by huge influxes of livestock from Ijara into Lamu and Tana Delta Districts were already causing disputes and raising suspicion, hence conflicts there are looming conflicts over natural resource use in that Biodiversity rich triangle.

## **1.4.2 Migration**

- Most of the Livestock stayed within satellite camps of the dry season grazing areas inside the Boni forest and parts of Lamu district, notably, around Witu division, and lower Tana River basin.

## **1.5 Implication on food security**

The above conditions are expected to have negative implications on the food security situation.

## **2.0 Rural economy indicators (food availability)**

### **2.1 Livestock production**

#### **2.1.1 Livestock body condition**

- The livestock body condition and health status for all categories had showed an improvement. However, there were isolated cases of black quarter anthrax reported in pastoral livelihood zones and cases of CCPP, helminthiasis trypanomiasis observed in the agro-pastoral livelihood zones.
- However, mortality rate was minimal hence a positive herd growth was recorded for all species.
- Livestock production in terms of milk yield had increased when compared with preceding month because of adequate pasture and browse thus enhancing the nutritional status of children under five years. It has also impacted positively on livestock market value hence increasing household income.
- Tsetse fly infestation remained a challenge to pastoralists because of the economic implications since the drugs for treatment and veterinary services are exorbitant. This was in stark comparison to the low income of the pastoralist households.
- The trend was normal when compared with same period of previous years where the body condition and production of livestock used to be good. It had a positive impact on household food security.

#### **2.1.2 Livestock diseases**

Diseases that are prevalent and affect livestock in all the livelihoods are as indicated below: -

- Cattle: LSD, CBPP, Trypanosomiasis and black quarter anthrax.
- Sheep: Helminthiasis, sheep introtoxicimea, pulpy kidney disease.
- Goats: CCPP, helminthiasis, Trips, PPR.

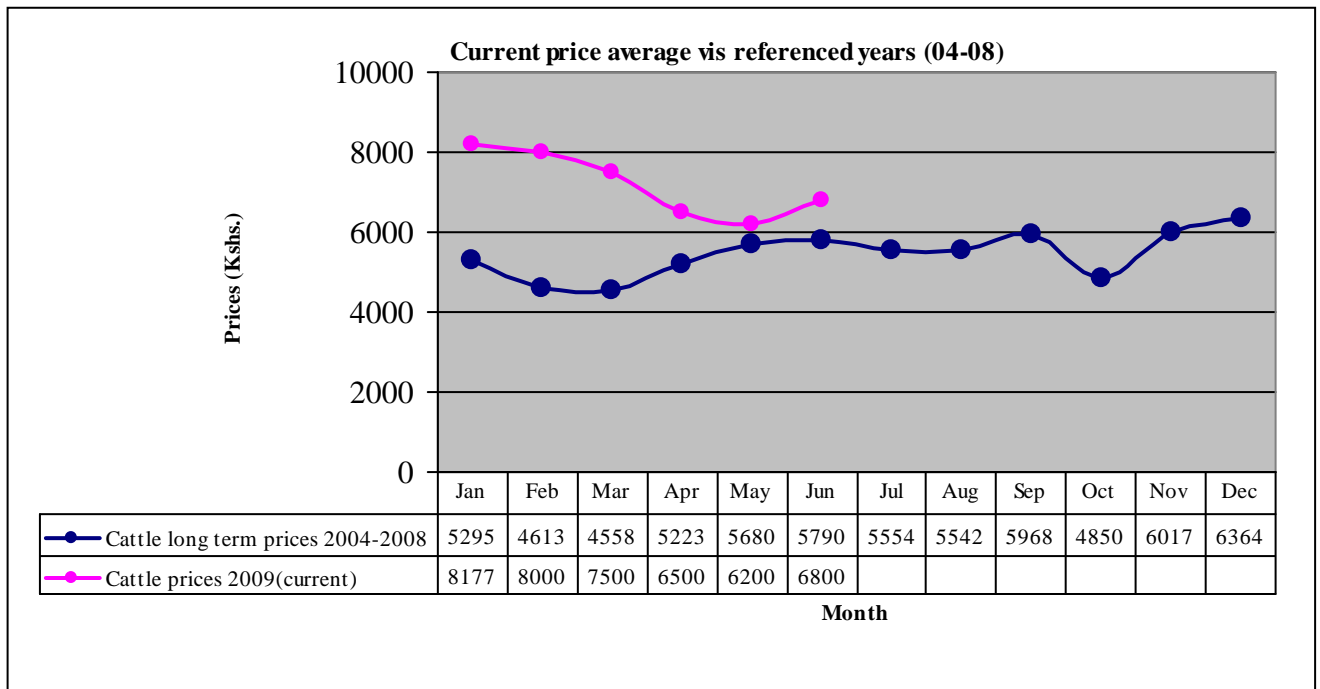
#### **2.1.3 Milk production**

- Milk yield increased and the number of household that could afford to “Everyone” increased from 8% May’09 to 10% for June ’09, this is attributed to increase in milk production as a result of sufficient forage and water.
- The increased milk production has affected positively the household security since it promoted pastoralist’s purchasing powers of basic needs.

### 3.0 Access to food

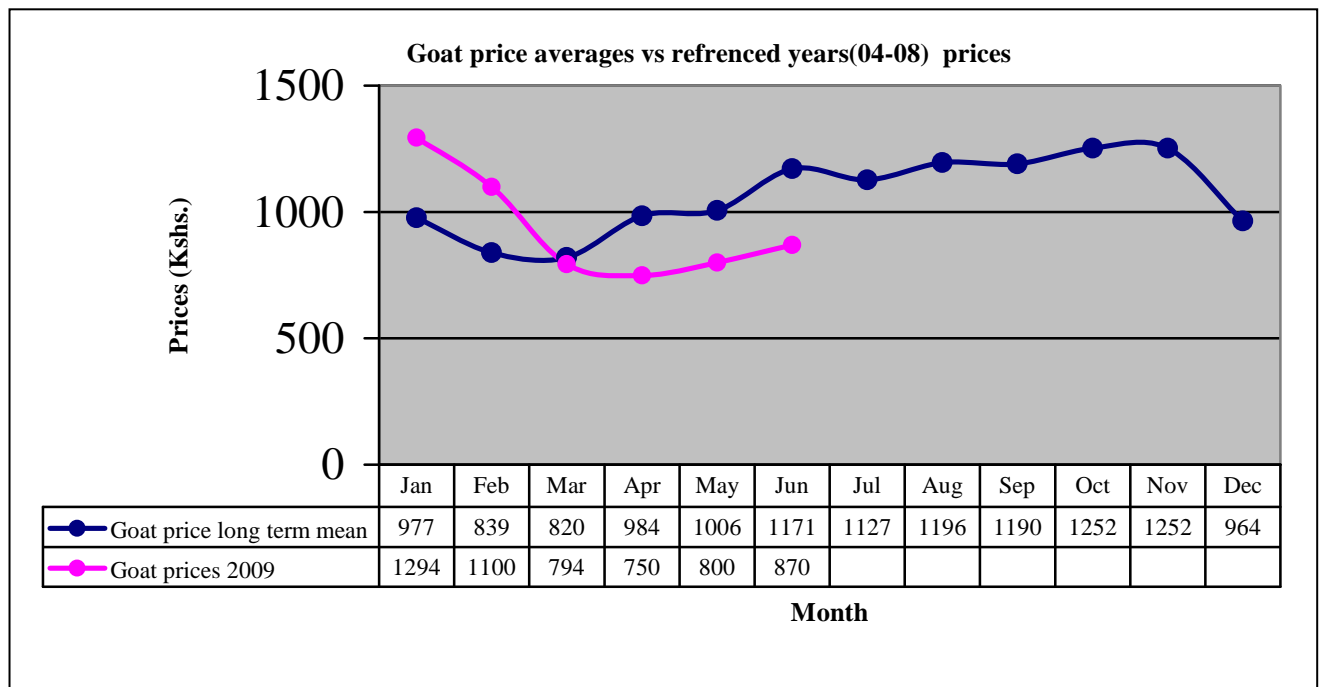
### 3.1 Livestock marketing

#### 3.1.1 Cattle prices



- Cattle prices increased by 13.3% from Ksh6,200 to Ksh6,800.
- The trend was normal at the time of the year and had a positive effect on food security.
- Agro-pastoralist and pastoralist livelihood zones recorded the highest cattle prices at Ksh 8,000 and Ksh5,800 respectively.
- The price was lower than the Ksh5,680 recorded for the same period of the reference year (04-08).

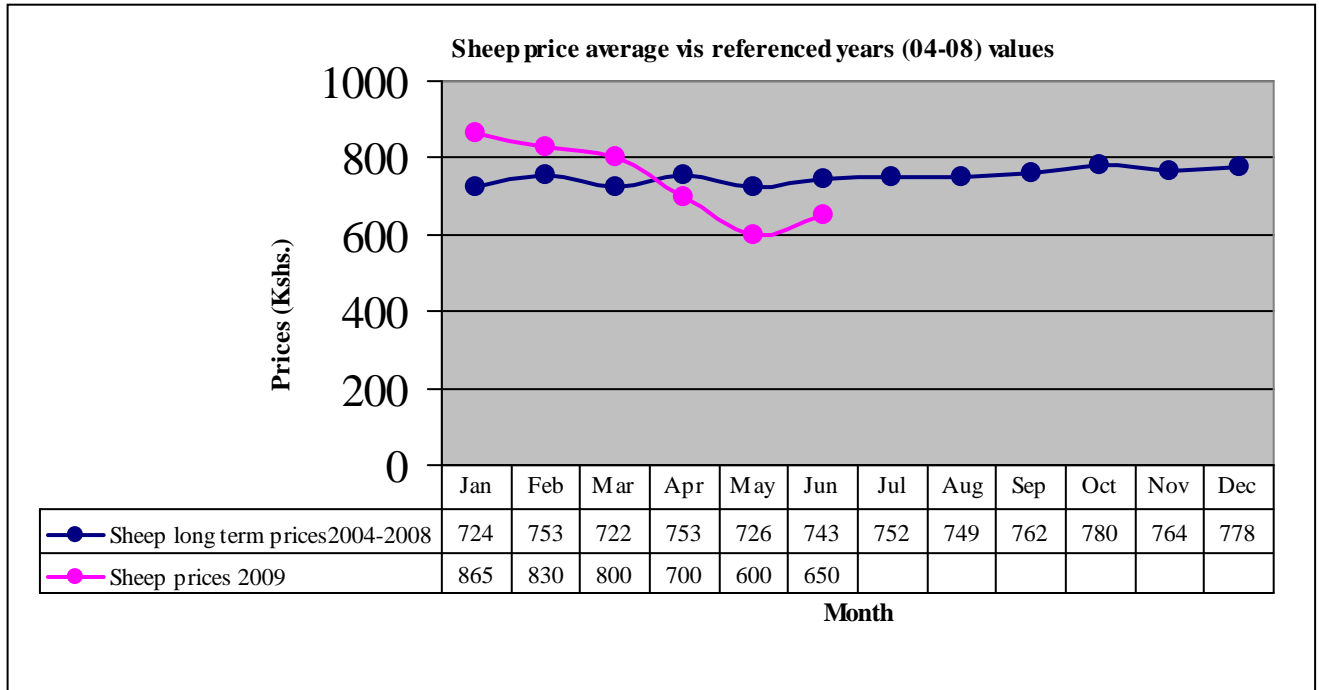
#### 3.1.2 Goat prices



N-560

- Average goat prices appreciated by 5% from Ksh800 to Ksh870.
- Agro-pastoralist livelihood zones recorded the highest prices at Ksh1,500 while pastoralist livelihood zone recorded the lowest at Ksh979.
- The price was much lower than the reference year's Ksh1,171.
- The increase in prices was attributed to the low number of animals presented for sale following the rains received and was in line with pastoralists culture of holding on to their livestock during the time of the year.

### 3.1.3 Sheep prices



N-320

- The prices of sheep increased by 12.5% from Ksh600 to Ksh 650.
- The agro-pastoralist livelihood zones recorded the highest price at Ksh950 while pastoralist livelihood zone recorded the lowest at Ksh590.
- The price was lower than Ksh726 recorded for the same period of the reference year (04-08)
- The trend had a positive impact on household food security.

### 3.2 Livestock sales

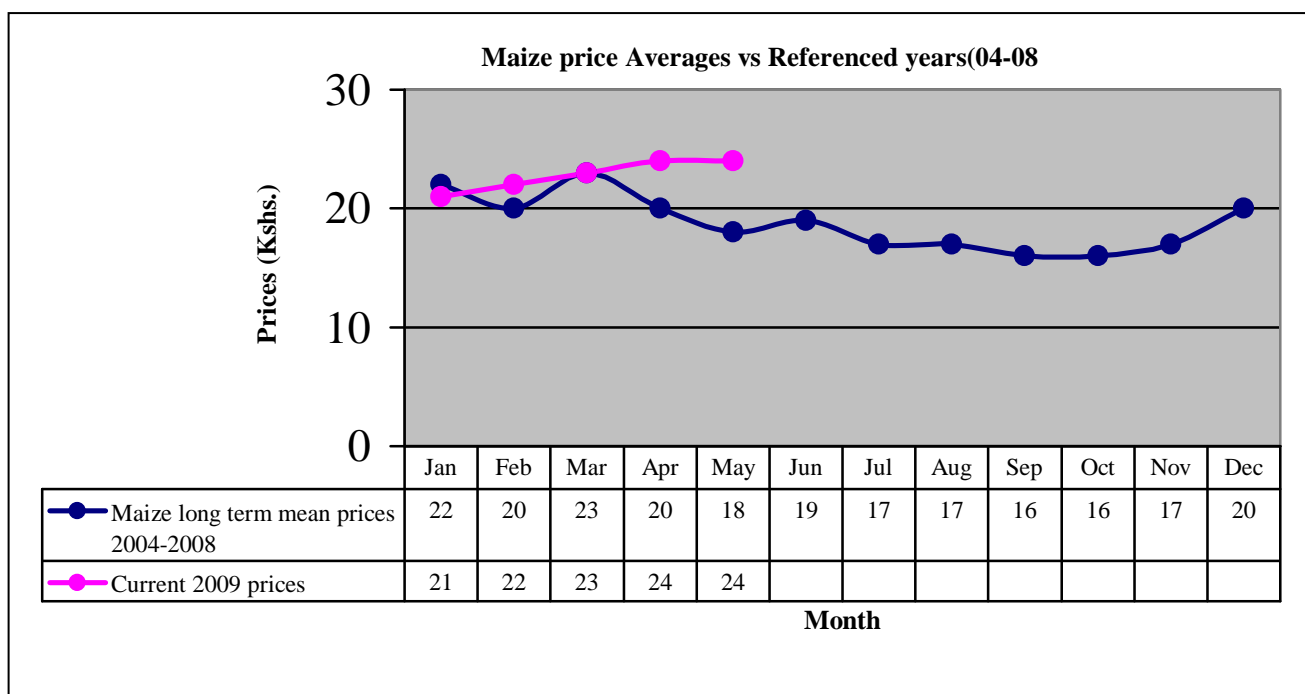
- Livestock sales increased compared to last reporting period for all categories of livestock.
- This was a normal trend and had positive impact on household food security since it improved the purchasing power of the pastoralist while also ensuring the conservation of household herds.

### 3.3 Milk consumption

- Milk consumption was low, though with an increasing trend in all the sentinel sites during the month.
- Consumption across the district continued to be low since only an average of 10% of the household members consumed milk for the every one category.

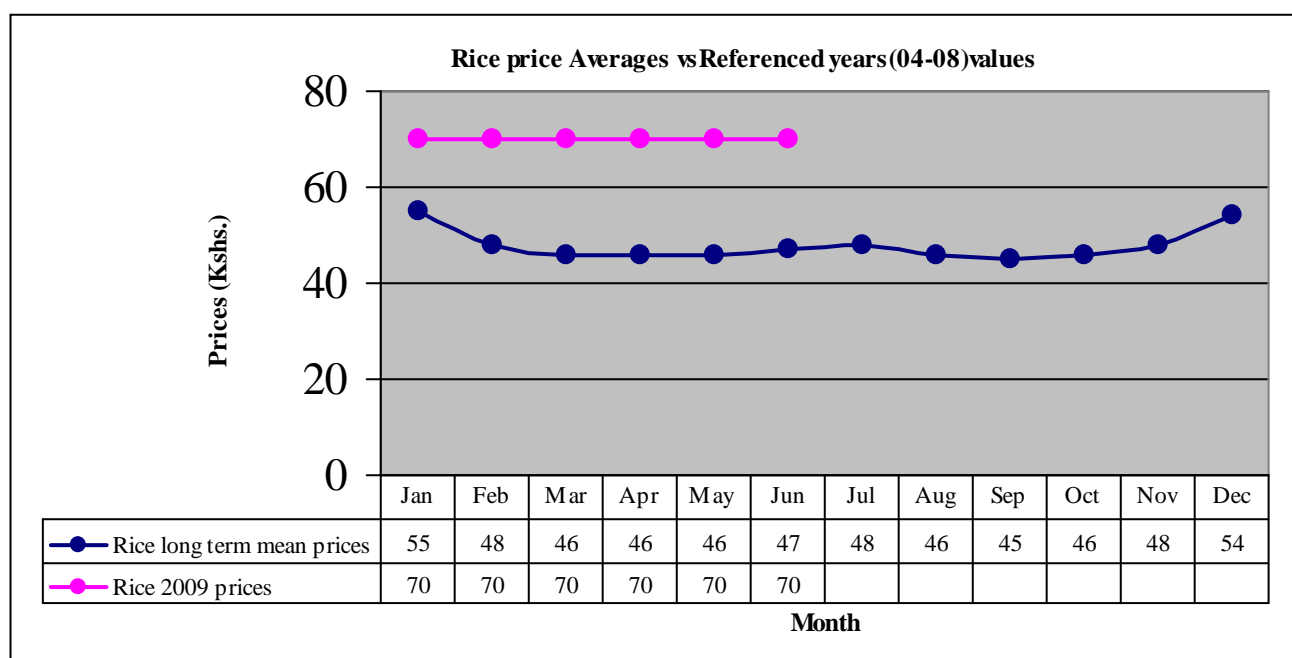
### 3.4 Food prices

#### 3.4.1 Maize prices



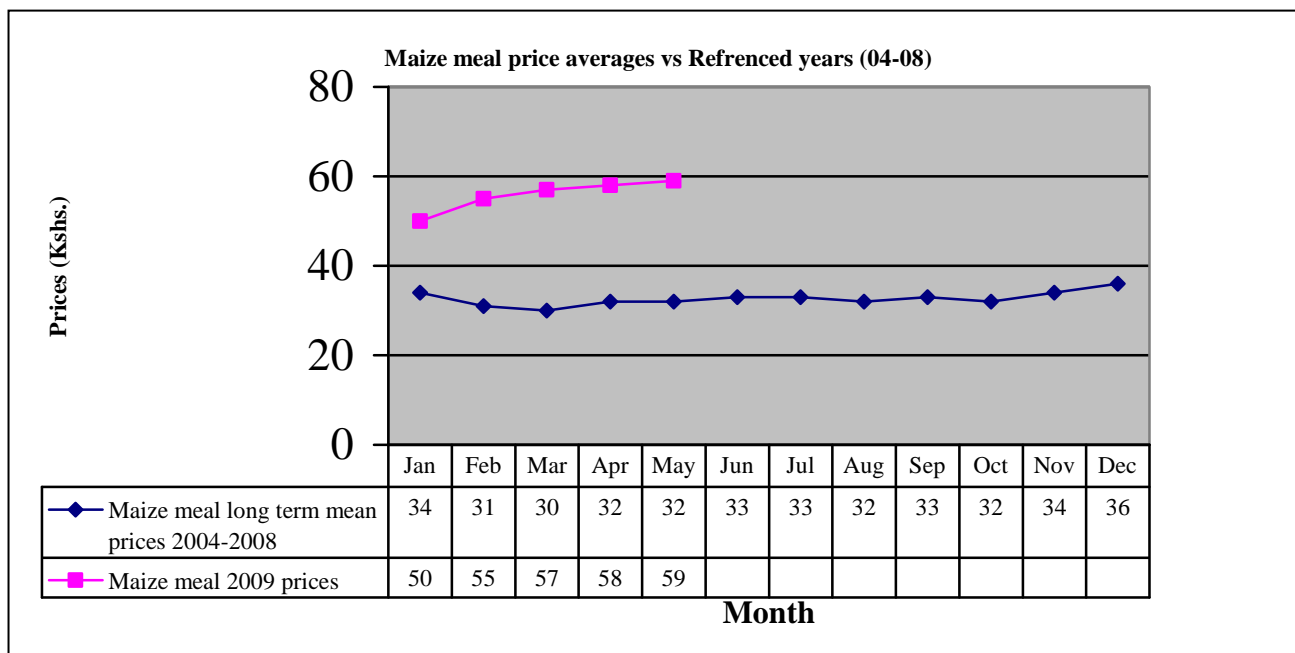
- The average price of maize remained stable during the month under review.
- The average price was Ksh 24 per kilo compared to the long term mean of Ksh 18.
- The trend was normal and had a positive impact on food security since most households could afford this food item and still save for other needs in view of the prevailing improved livestock prices.

#### 3.4.3 Rice prices



- The average prices of rice remained same as previous month but still high compared to the long term mean.
- The price was much higher compared to the Ksh46 recorded during the same period of the reference year (04-08).
- This may be attributed to the high cost of transportation.
- The trend was normal, though the prices are supposed to be lower than what was recorded for the month.

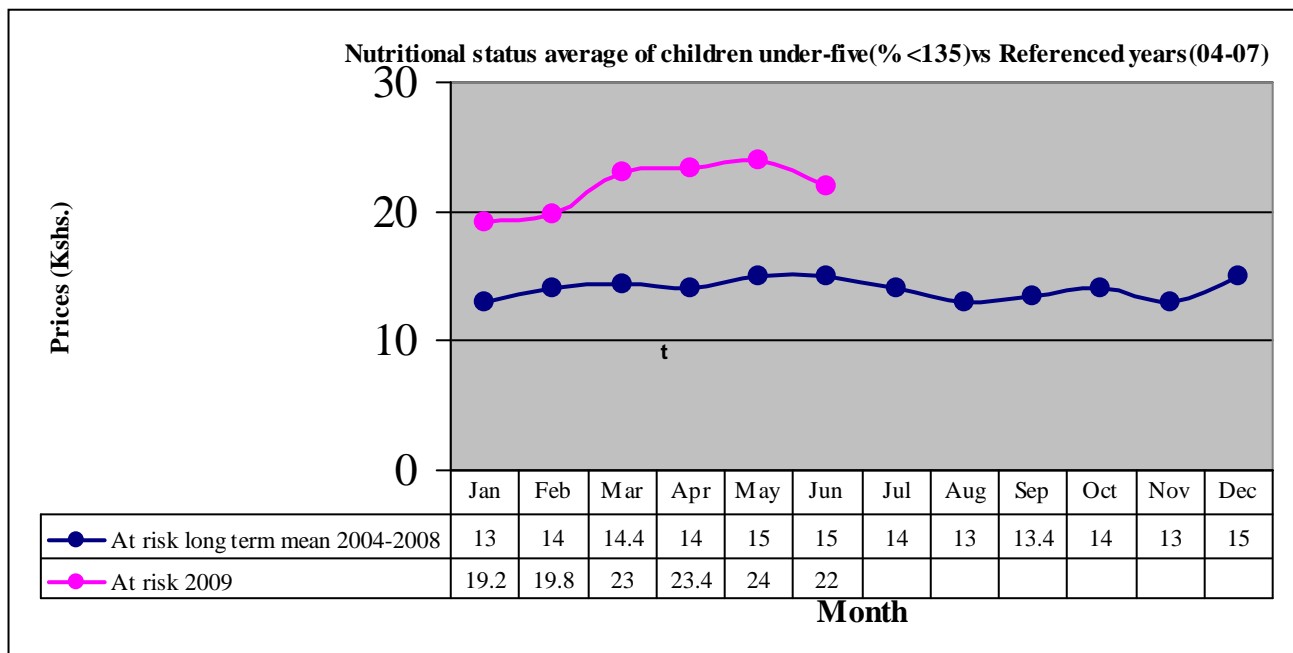
### 3.4.2 Posho ( Sifted maize meal) prices



- The average price of sifted maize meal remained stable at Ksh59 per kilo.
- This was much higher compared to the Ksh33 recorded during the same period of the reference year (04-08).
- The trend had a negative impact on household food security as most households could not easily access the commonly preferred food commodity.

## 4.0 Human welfare indicators (Utilisation of food)

### 4.1 Nutrition status



**N-1200**

- Compared to last reporting period, the nutrition status of children under five years improved.
- The percentage of those rated at risk of malnutrition dropped to 22% from 24% in May. T
- This was attributed to increase in milk yields in the district by the second week of the month, though this was still undermined by incidences of malaria, diarrhoea and upper respiratory tract infections.
- The most affected sentinel sites were Ijara, Aballatiro Koranhindi and Sangailu.
- Areas recording high percentages of children at risk of malnutrition were the pastoralist and agro-pastoralist livelihood zones of Aballatiro, Koranhindi, Handaro, Sangailu and Ijara which stood at 28% and 36.3%.

#### **4.2 Human health**

No alarming disease outbreaks were reported. However Malaria and upper respiratory tract infections were the common ailments reported, though at manageable levels.

#### **4.3 Flagged areas**

Pastoralist and agro-pastoralist livelihood zones of Koranhindi, Handaro, Sangailu, Ijara and Abalatiro areas were most affected.

#### **5.0 Current interventions**

##### **5.1 Non- food interventions**

- Construction of water harvesting structures for crop production by Ministry of Agriculture.
- Distribution of seeds to crop farmers by Ministry of Agriculture.
- Conducting of mobile outreach clinics by MOH/ALRMP.
- Distribution of Unimix and Vitamin A supplementation by MOH/UNICEF.

- Vaccination against CBPP ongoing and 8,760 cases have been vaccinated.
- Water pan protection measure- ALRMP, MINISTRY OF WATERGLOBAL CONCERN FUND.
- Cash for work.

## 5.2 Food aid

Relief food to be provided to vulnerable households.

## 5.3 Coping strategies

The coping measures adopted during the month were:

- Collection and sale of bush products including honey and Aloe extracts.
- Herding and other casual work
- Sales of quarry products
- Petty trade.

## 6.0 Recommendations to DSG and KFSM

- Disease surveillance should be sustained by veterinary department and other stakeholders to contain any disease outbreaks. All stakeholders to support vaccination through the Vet Department to contain any would be outbreaks. **Action: Vet department, ALRMP11, Womankind and Oxfam GB.**
- The MOH should strengthen and sustain disease surveillance to avert increase in malaria incidences. Rural health facilities to be stocked with sufficient drugs for easy access by pastoralists. Anti-malarial campaigns should also be strengthened. **Action: MOH, DPHO and CBOs.**
- Agricultural extension services should be strengthened by DAO.
- Impeding conflicts over the three mile strip along the Tana River to be resolved by the concerned authorities. **Action: District Peace Committees, Local Authorities and the DSCs.**
- Control measures on wildlife menace to be put in place. **Action: KWS, Local Authority, IPAD, Conservation groups, Provincial administration, MPs.**