

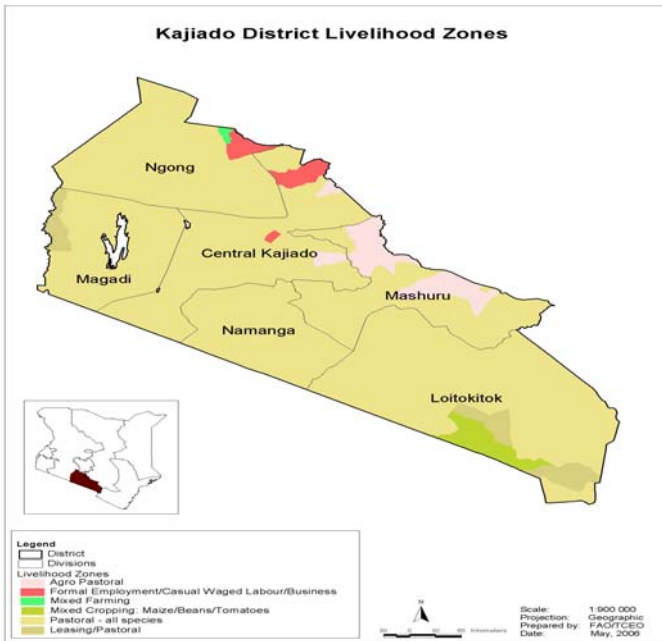


**OFFICE OF THE PRIME MINISTER**  
**MINISTRY OF STATE FOR THE DEVELOPMENT OF NORTHERN KENYA AND OTHER ARID LANDS**  
**ARID LANDS RESOURCE MANAGEMENT PROJECT II**

**DROUGHT MONTHLY BULLETIN, JUNE 2009**

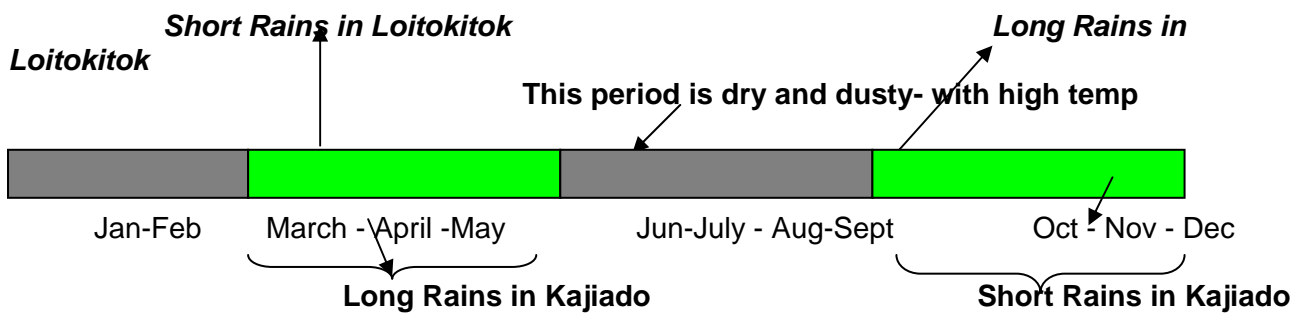
**Kajiado Central, North and Loitokitok districts**

**Warning stages**



Livelihood Zone	Warning Stage	Trend
Pastoral-All Species	Alarm	Worsening
Agro Pastoral	Alarm	Worsening
Mixed Farming	Alarm	Worsening
District	Alarm	Worsening

**Seasonal Calendar**



## Situation overview

- The month of June was characterised by dry and hot weather condition in the three districts of Kajiado Central, Kajiado North and Loitokitok.
- Water availability and accessibility remained poor. Return distance to water points remained at 20-40km for cattle and increasing in most parts. The community, ALRMP and other organisations in the districts trucked water for weak and young cattle in the dry season grazing areas of Central Keekonyokie, Magadi, Ewaso, pastoral areas of Loitokitok, and Kajiado- 200 litres drum for Ksh 300 to Ksh 500/=. Livestock accessed water after 2-3 days in most pastoral areas.
- All temporary water sources (dams and pans) were dry. Strategic dry season grazing boreholes and shallow wells were the main water sources for livestock and domestic use. Boreholes worked for longer hours 18-24 hours requiring repairs and diesel subsidy.
- Water sources were characterized by long queues and high concentration of livestock. Use of borehole water for livestock was at a fee (Ksh10-20 per head per month).
- The MAM Long rain performance was below Normal and did not trigger meaningful pasture regeneration or improve water situation. Pasture availability and accessibility ranged from fair to poor and available in its driest form in most areas. Pastoralists purchased hay , bran and other feed supplements to augment the shortfall
- During the month under review, Cattle body condition in Kajiado Central and Kajiado North (Ewaso, Magadi, Namanga, Central divisions), and Loitokitok was poor, with increased cases of home slaughter of weak and recumbent cattle and deaths. Sheep and goats body condition was fair.
- Cattle prices were on downward trend compared to long term average, cattle prices declined by 5.3 per cent from Ksh 6,781to Ksh 6,420 between May and June 2009. Weak and recumbent cattle that were delivered on pick ups for sale to Kiserian (Ngong), M.46 (Loodokillani), Bissel (Namanga), and Ewaso Kedong markets were sold at Ksh. 2,000-3,000. Average goat prices increased by 0.31%, from Ksh1, 274 to Ksh1, 278 between May and June.
- There was food deficit resulting in imports of cereals and pulses in these areas outside the district. Maize and beans prices were Ksh 40 and Ksh 80 respectively.
- As was reported in the previous month, the ban on maize imports from Tanzania was still in place, and further exacerbated availability of the same in Namanga and Loitokitok. National Cereal Producer Board (NCPB) in Kajiado and Loitokitok depots had not replenished their stocks and maintained low stock levels.
- Conflicts: Livestock from the three districts; Kajiado Central, Kajiado North and Loitokitok have moved in large numbers to Nairobi suburbs in search of pasture.
  - There was Conflict between irrigation farmers and pastoralists attributed to over abstraction of water upstream.
  - Human- wildlife conflicts as farmers had to contend with elephants, gazzels and zebras that had migrated outside the Amboseli park to farms along the upper zone of Loitokitok(Sompet, Ntonet, Njoro, Murtot and Nkama);
  - Conflict between pastoralists that had migrated to Makueni,Machakos and Maungu.
- Conflict between KWS and pastoralists was high in Tsavo Parks as the KWS was not allowing them into the Park.
- The nutrition status of children less than 5 years continued to deteriorate compared to May . This was attributed to unavailability of milk to children in the pastoral areas. The number of children rated as being at the risk of malnutrition (based on the Mid Upper Arm Circumference -MUAC < 135mm) increased to 13.2% compared to 11.72 in January 2009. ; During the month under review, 1,345 children were examined.

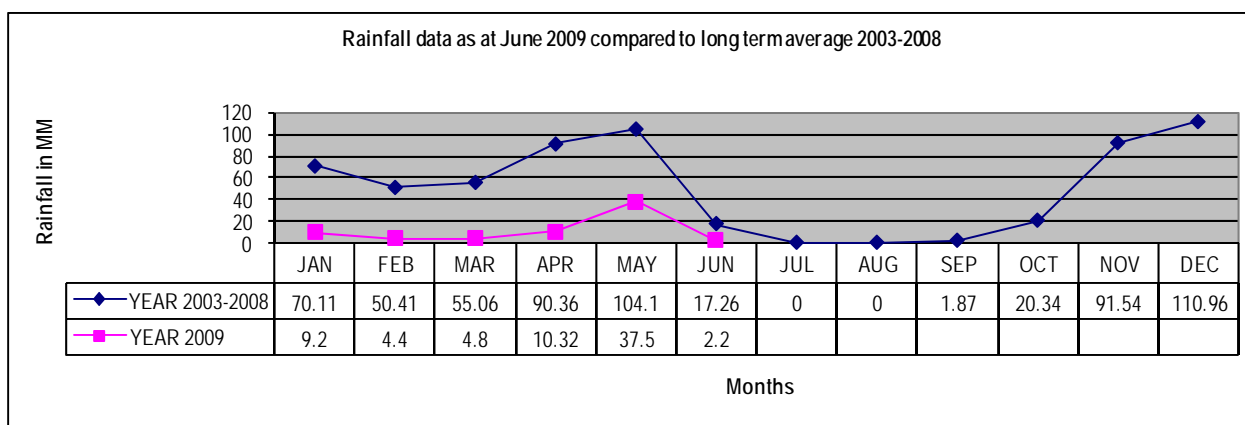
- The crop season was marked by 100% crop failure attributed to intermittent and poorly distributed rainfall. Household are depending on cereals and pulses constituting 90-100% of household food needs. The most affected divisions were Ewuaso, Central, Magadi and Mashuru in Kajiado district. Parts of Ngong and Namanga were equally bad. The pastoral areas of Kimana, Lenkisim, Mbirikani, Rombo and Lower Kuku in Loitokitok were at 'Alarm' stage and worsening.
- The prospects of food security remains precarious in Loitokitok., while Kajiado and Ngong districts can be rated as borderline food insecure with high likelihood of further deterioration.

### Recommendations to DSG and KFSSG

<b>Recommendation</b>	<b>Status of interventions ( on gong and concluded)</b>
Continued and close monitoring of drought and food security situation	Monitoring of drought and food security situation (ALRMP early warning system)- ongoing
<b>Water development</b> Water trucking to communities and schools	A few Development partners and local NGO's continued trucking water to schools and community using two water boozers in the three districts. Most households and institutions have not been reached due to limited funds. Need for water boozers for Loitokitok district.
<b>Provision of Relief Food aid</b>	Cash transfer food vouchers for drop out pastoralists in peri-urban /PLWA in Kajiado by NIA <b>Drought Emergency Operations/Protracted Relief &amp; Recovery Operations (EMOP/PRRO) :</b> 82,825 persons out of 568,554 of the larger Kajiado district are receiving relief food.
Drilling/rehabilitation of boreholes	On going : by NIA, MPIDO, AMREF, MAAP and ALRMP
Desilting/excavation of water pan	6 No. water pans desilted/excavated since December 2008 (MPIDO/ALRMP)
<b>Livestock Development/Health</b>	Livestock off take by NIA – on going- slaughter, school fees waiver to institutions (secondary and primary boarding schools) – 700 head of cattle. There is need to upscale the numbers of cattle for off take
Vaccination against emerging diseases(FMD, LSD) and strategic disease control	FMD, LSD- lack of FMD vaccines and availability of funds.
<b>Livestock feed supplement</b> (hay provision and other feed supplements).	There was no support to affected communities during the month.
<b>Health :</b> Provide supplementary food	24MTS of Unimix procured by ALRMP- Kajiado- has been distributed to the health centers and EWS sample areas by DMOH – Kajiado and Loitokitok coordinated by District Nutrition Officers to the respective districts
<b>Agriculture :</b> provision of drought tolerant crops before the next rains	None, District Agriculture Office awaits delivery to the districts from the ministry headquarters for the OND season
<b>Education:</b> consider all primary schools for the regular SFP	None.

## 1.0 Environmental indicators (Stability)

### 1.1 Rainfall



- The month was characterised by dry and hot weather condition.
- No rainfall was recorded in most parts of Loitokitok, Kajiado and Ngong districts. Scanty showers were received in a few areas, Oldoinyo Orok in Namanga and pockets of Isinya division. Other areas remained dry and bare.
- Generally the long rains (MAM) season 2009 was below normal -erratic and scantily distributed.
- Poor performance of the long rains (MAM) had negative implications on food security.

### 1.2 Condition of natural vegetation and pasture

- Pasture situation has persistently remained poor. The most affected divisions were Ewaso, Central, Magadi, Mashuru and Namanga in Kajiado district. South and Central Keekonyokie in Ngong and Isinya were equally bad. The pastoral areas of Lenkisim, Mbirikani, Rombo and Lower Kuku in Loitokitok were at 'Alarm' stage.
- In areas that received some erratic showers, there was regeneration, however; there was corresponding clustering of livestock and wildlife.
- Pastoralists continued to purchase hay, bran and other feed supplements.

- Livestock in higher zones of Loitokitok and Ngong divisions are utilizing stalks of failed maize crop. Purchase of hay at Ksh200-300 was ongoing.
- The poor range condition has corresponding negative impact on livestock productivity and subsequently negative impact on food security status.

### 1.2.1 Distance to grazing areas

- Return distances to grazing areas ranged from 20-40 Kms, in most pastoral areas and is expected to increase. The normal range is usually 5 Km. the observed situation is below normal.
- There was some relief in areas that received some showers.
- The observed situation is below normal.

## 1.3 Water availability and accessibility

### 1.3.1 Water sources

- The water situation was deteriorating as a result of the current drought spell. Water availability and accessibility for agriculture, livestock development and domestic use was poor as most temporary surfaces water points were dry.
- Water trucking for weak and young livestock in dry season grazing areas continued at Ksh 250-500- for 200litr –drum.
- The observed situation at the time of the year was below normal. On a normal year, temporary water sources are usually recharged.
- The observed situation had negative implications on food security.

**Table 2: Water sources and percentage of household using them, compared to a normal situation.**

Water source	Boreholes& Shallow wells	Rivers & springs	pipelines	Dams &Pans
% of households depending on the source	95%	-	5%	-
% of households that depend on the source normally	15%	5%	5%	75%

**Table 3: Average return distances to water sources, compared to a normal situation**

	Boreholes& Shallow wells	Dams and Pans	springs	pipelines
Average Kms to the source	20 Kms	-	15 Kms	15Kms
Normal Kms to the source	3 Kms	3Kms	3Kms	3 Kms

### 1.3.2 Household access to water

- Return time for fetching water for domestic use ranged between 8-10hours.
- Water points were characterized by heavy concentration of livestock and long waiting hours; livestock were given first preference to domestic use.

### 1.3.3 Livestock access to water

- The average distance to water sources for livestock averaged 20-40 Kms.
- Livestock watered for 2-3 days per week, as most temporary water sources dried up.
- Livestock bordering Tsavo NP were not allowed into the Park; however Amboseli National Park allowed livestock to water in the Park. There was significant relief in areas that received showers( Kitengela and some parts of Isinya).

## 1.4 Emerging issues

- Livestock deaths associated with the current drought. This was evident in Ewuaso, Central and Mashuru divisions.
- High food prices impacted negatively on purchasing power of pastoralists.
- High food prices impacted negatively on purchasing power of pastoralists.
- Over crowding of livestock and wildlife at water sources.
- Increasing incidences of livestock deaths associated with ECF as most livestock moved to dry season areas which have high tick challenge.
- Watering fee at dry season strategic boreholes soared to Ksh 20-40 per cow and Ksh 20 per goat.
- Human/wildlife conflicts in the irrigation areas.
- 100% crop failure in the rain-fed crop growing areas of Loitokitok ( Sompet, Nkama, Lower Kuku) Namanga, Mashuru and Central division associated with water stress.
- Natural Resource Use Conflicts: over grazing in the Tsavo Parks along the Loitokitok between KWS and pastoralists was high, as the KWS was not allowing them in the Park, irrigation farmers and pastoralists attributed to over abstraction of water upstream, human-wildlife conflicts as farmers had to contend with elephants that had migrated outside the Amboseli and Tsavo National park to farms along the upper zone of Loitokitok and irrigation schemes of Rombo, Kimana, Elangata Enkema, Olorika and Ilchali.

## **2.0 Rural economy indicators (food availability)**

### **2.1 Livestock production**

#### **2.1.1 Livestock body condition**

- All livestock maintained poor body and health conditions. Livestock (cattle and sheep) performance in terms of productivity was low and poor.
- This was attributed to insufficient forage and water; long trekking to water and pasture.
- Increased cases of home slaughter of weak and recumbent cattle and deaths. The body condition of goats was fair in most locations attributed to availability of acacia totillis pods and dry leaves.
- The observed trend had negative implications on food security as livestock in poor body condition fetched low prices.

#### **2.1.2 Livestock health**

- Incidences of tick born diseases, especially ECF, Anaplasmosis and Babesiosis, were evident in dry season grazing areas attributed to inadequate water for spraying and movement of livestock into areas with high tick challenge.
- In small stock, cases of sheep and goat pox (S&GP), and contagious caprine pleuropneumonia (CCPP) were also reported in all the pastoral areas of the district.
- Stress related abortions in livestock were high in all pastoral areas. Foot and Mouth (FMD), malignant catarrhal fever (MCF) and black quarter were reported in Central and Isinya Divisions.
- Trypanosomiasis was reported in cattle that had moved to Coast province, Makindu, Chyullu hills and along Ewuaso Ngiro River in Magadi.

#### **2.1.3 Milk production**

- Availability and accessibility of milk was constrained by poor pastures and water conditions and migration of livestock far a field; Households accessed milk from the small stock and was not adequate for children under five years.
- The current trend on milk consumption has serious food security implication at household level.

## 2.14 Livestock migration (April- May-June 2009)

- Close to 70% of cattle have migrated out of the district in search of pastures. The migration was both external and within the district.
- Externally: To Nairobi (suburbs), Makueni, Tsavo East and West National Parks and areas around Lake Chyalla. Kiambu, Nakuru, Naivasha, Nyahururu Coast province (Maungu, Kinango, Voi), Nairobi and Thika.
- Cross border migration in search of pastures was evident along Loitokitok/Taveta-Tanzania border.
- Internally: animals migrated to dry season grazing areas; to the hills mainly Chyulu, Namanga hills and Nguruman escarpment. There was massive migration/clustering of livestock in areas that had dry pastures.

## 2.2 Crop production

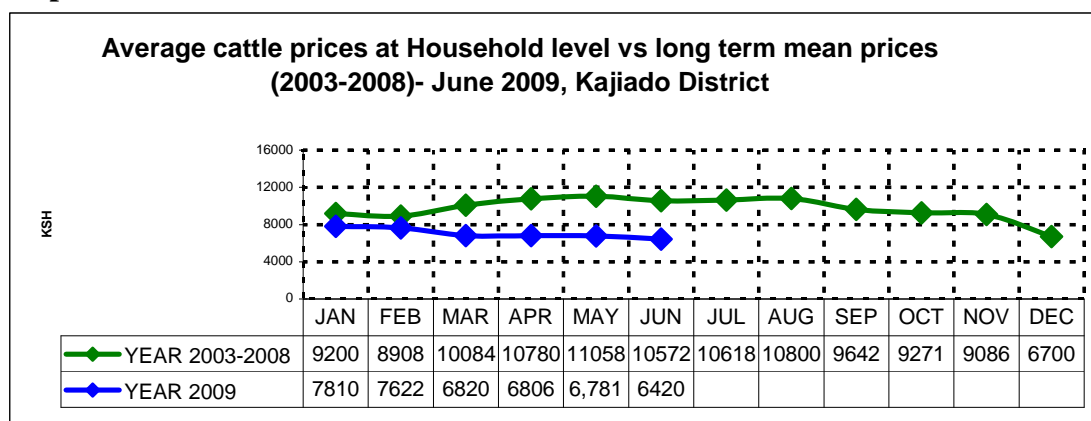
### 2.2.1 Timeliness and status of crop production activities

- The just ended crop season was marked by 100% crop failure in the rain fed crop growing areas of Mashuru, Isinya, Central, Namanga divisions in Kajiado and upper zones of Loitokitok district as crops succumbed to serious water stress at critical growing stage.

## 3.0 Access to food

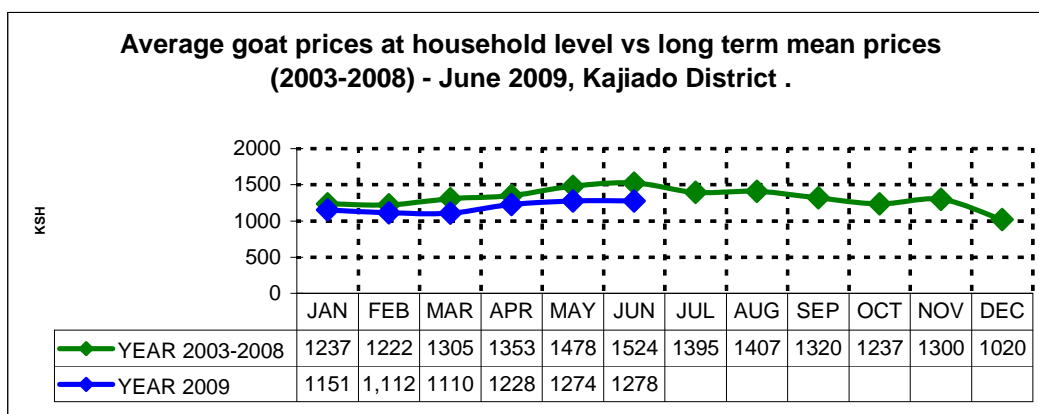
### 3.1 Livestock marketing

#### 3.1.1 Cattle prices



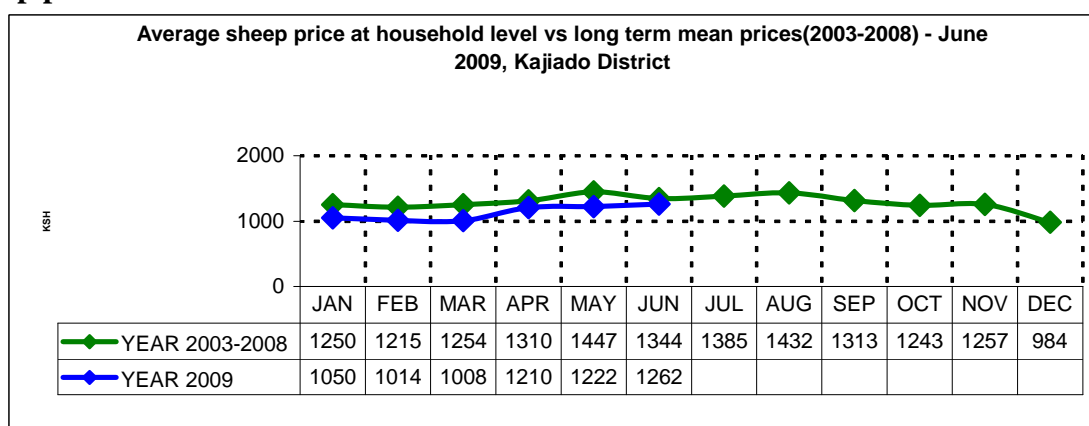
- Average cattle prices declined by 5.3 per cent, from Ksh 6781 in May to Ksh 6,420 in June 2009.
- The price was below long term average by 39.27%. The current trend is attributed to poor cattle body condition as a result of the prevailing drought in most areas.
- The observed price trend has negative implication on food security.

#### 3.1.2 Goats prices



- Average goat prices slightly increased by 0.31% from Ksh1, 274 in May to Ksh 1,278 in June 2009.

### 3.1.3 Sheep prices



- Sheep prices increased by 3.25% during the month.
- The increase in sheep's prices could be attributed to their fair to good body condition.

### 3.1.4 Milk consumption

- Over 80% of households interviewed reported nil milk
- As was in the previous month, availability was constrained by poor livestock body condition, internal and external migration in search of water and pasture.
- Unavailability of milk at household level has negative implications on food security especially nutrition status of children under five.

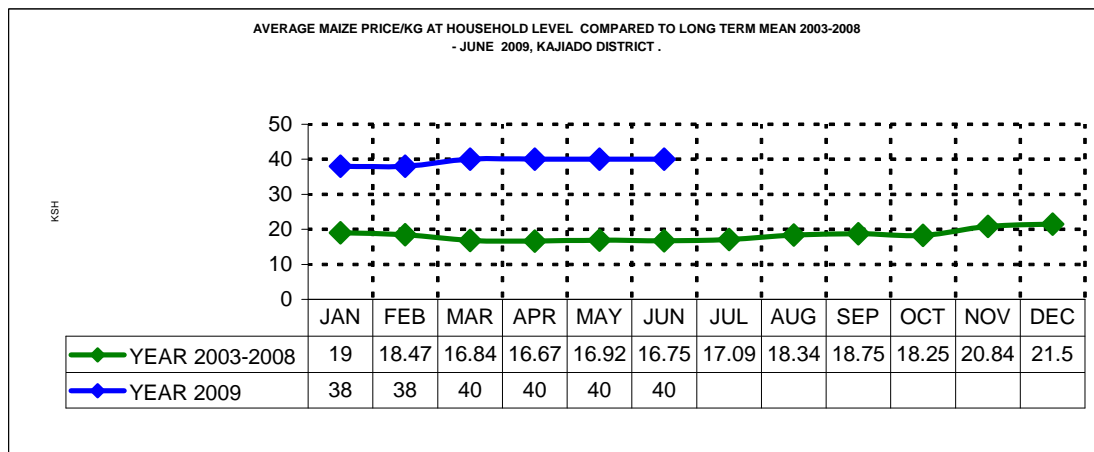
## 3.2 Implications on food security

The following impacted negatively on food security in the district:

- Poor body condition of cattle and deaths with corresponding low prices in cattle
- High food prices, coupled with declining livestock prices, especially cattle.
- Unavailability of milk for the U5s.
- Migration of livestock.
- Late commencement of rains: portend poor crop performance in the rain fed crop growing areas: the expected good crop is expected after 2009 OND short rains in April 2010.

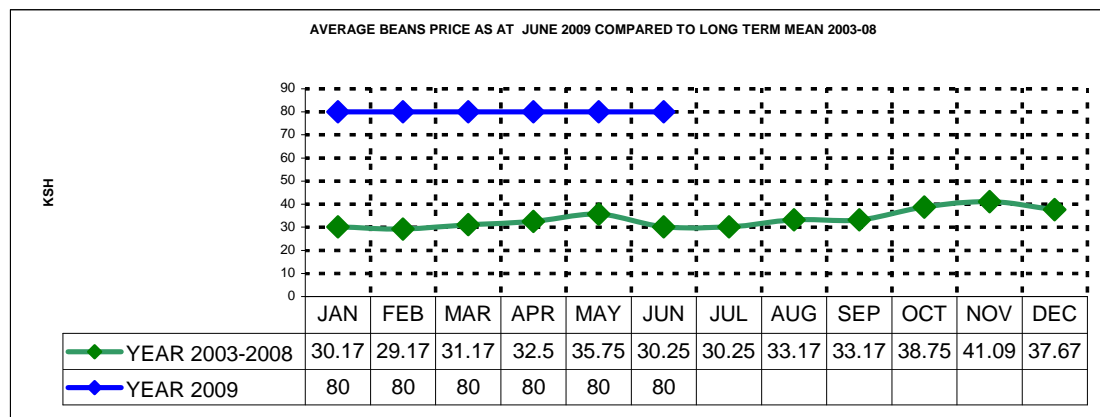
## 3.3 Crop prices

### 3.3.1 Maize prices



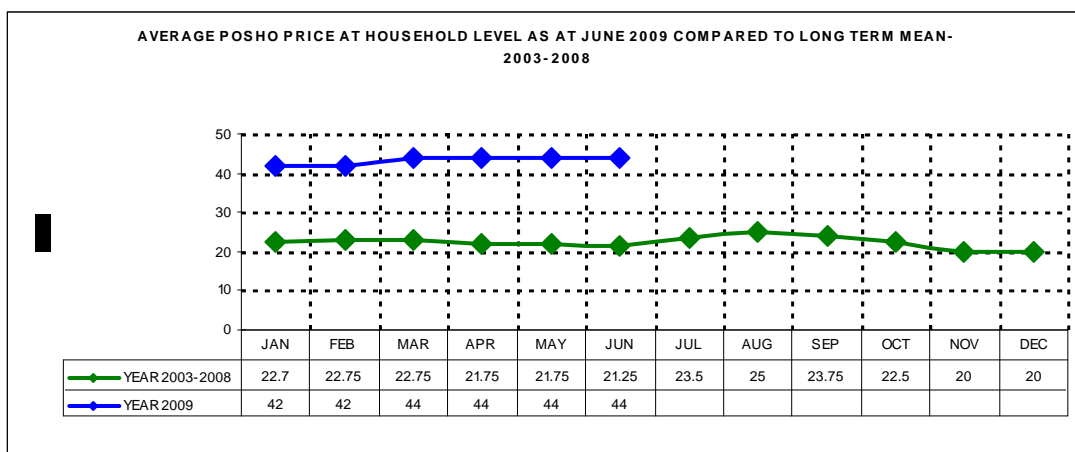
During the month under review, the average maize price stabilised at Ksh 40 per kilo compared to long term average of Ksh6.75.

### 3.3.2 Beans prices



- The average beans price stabilized at Ksh 80 per kilo during the month under review.
- The prices were abnormal compared to long term mean of Ksh 30.25 per kilo.

### 3.3.3 Posho prices



- The average price of posho stabilised at Ksh 44 per kilo during the month under review.
- The price was above normal compared to the long term mean of Ksh 21.25 per kilo.

### 3.4 Income

#### 3.4.1 Crop income

- During the month under review farmers in the irrigation areas gained from the sale of farm produce such as tomatoes, cabbages, kales, onions and Asian vegetables from irrigation schemes in Magadi and Loitokitok. However, crop production in these areas was constrained by diseases, pests and low water levels.
- There was nil crop income in rain-fed crop growing areas as the previous season was characterized by total crop failure in the three districts.

#### 3.4.2 Livestock income

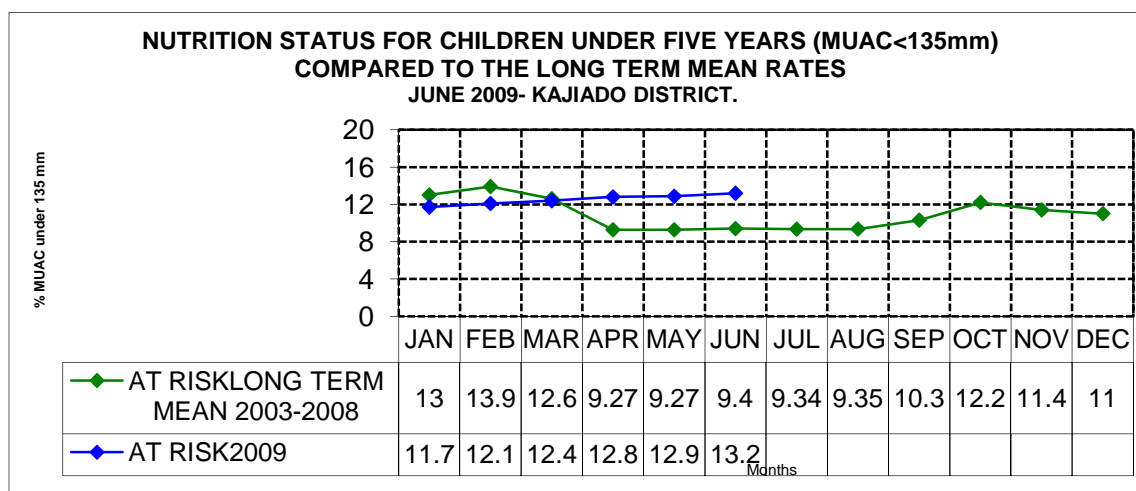
- There were below normal livestock income to most households: attributed to livestock migrations far a field, poor body condition and deaths that constrained livestock marketing activities resulting in low prices.
- **Other sources of income;** sale of charcoal, sand harvesting, petty trade and remittances.

#### 3.4.3 Terms of trade for pastoralists

- As was in the previous month, pastoralist's terms of trade worsened, with increase in food and cereal prices and plummeting (39% decrease) livestock prices below the long term average.
- High cereal prices, coupled with declining livestock prices had negative implication on household food security.

### 4.0 Human welfare indicators (Utilisation of food)

#### 4.1 Nutrition status



- The nutrition status of children below five years was on upward trend and this was attributed to declining availability of milk at rural household level, occasioned by livestock migration in search of pastures and water and the recent 100% crop failure.
- During the month under review, 1,345 children were examined; children rated as being at the risk of malnutrition (based on the Mid Upper Arm Circumference -MUAC < 135mm) increased to 13.20% compared to 11.72 in January 2009.
- High rates were attributed to inavailability of milk in rural households in the last three months.

#### 4.2 Human health

- The most common diseases reported during the month of June were malaria, diarrhoea and respiratory tract infections (RTIs). As reported, rural health centres were providing insecticide treated nets.

#### 5.0 Current interventions

##### 5.1 Coping strategies (March and June 2009)

- Livestock migration to areas that received showers or dry season grazing areas
- Reduce frequency of livestock watering 2-3 days per week.
- Pastoralists purchased hay (at Ksh 250- 300) to supplement the shortfall from Bissell, Namanga and Karen.
- Slaughter of weak cattle and sale of the same.
- Community water trucking to the dry season grazing areas.
- Migration of household heads to urban areas in search of employment.
- Reduce frequency (skipping/quality of meals).
- Dependence and/or receiving remittances.
- Charcoal burning and sand harvesting.

#### 6.0 Recommendations to DSG and KFSM

Recommendation	Status of interventions ( on gong and concluded)
Continued and close monitoring of drought and food security situation	Monitoring of drought and food security situation (ALRMP early warning system)- ongoing
<b>Water development</b> Water trucking to communities	A few Development partners and local NGO's continued trucking water to schools and community using two water boozers in the

and schools	three districts. Most households and institutions have not been reached due to limited funds. Need for water boozers for Loitokitok district.
<b>Provision of Relief Food aid</b>	Cash transfer food vouchers for drop out pastoralists in peri-urban /PLWA in Kajiado by NIA <b>Drought Emergency Operations/Protracted Relief &amp; Recovery Operations (EMOP/PRRO):</b> 82,825 persons out of 568,554 of the larger Kajiado district are receiving relief food.
Drilling/rehabilitation of boreholes	On going : by NIA, MPIDO, AMREF, MAAP and ALRMP
Desilting/excavation of water pan	6 No. water pans desilted/excavated since December 2008 (MPIDO/ALRMP)
<b>Livestock Development/Health</b>	Livestock off take by NIA – on going- slaughter, school fees waiver to institutions (secondary and primary boarding schools) – 700 head of cattle. There is need to upscale the numbers of cattle for off take
Vaccination against emerging diseases(FMD, LSD) and strategic disease control	FMD, LSD- lack of FMD vaccines and availability of funds.
<b>Livestock feed supplement</b> (hay provision and other feed supplements).	There was no support to affected communities during the month.
<b>Health</b> : Provide supplementary food	24MTS of Unimix procured by ALRMP- Kajiado- has been distributed to the health centers and EWS sample areas by DMOH – Kajiado and Loitokitok coordinated by District Nutrition Officers to the respective districts
<b>Agriculture</b> : provision of drought tolerant crops before the next rains	None, District Agriculture Office awaits delivery to the districts from the ministry headquarters for the OND season
<b>Education:</b> consider all primary schools for the regular SFP	None.