

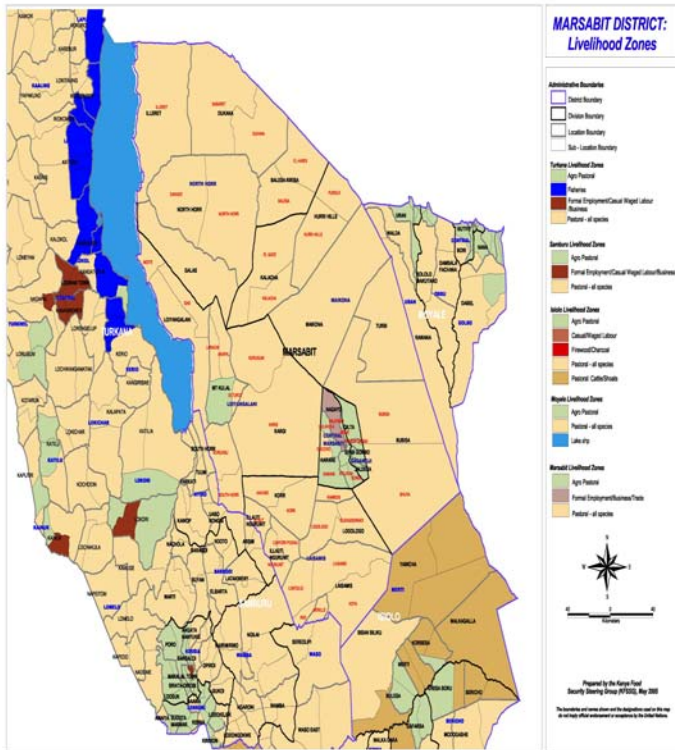


**OFFICE OF THE PRIME MINISTER
MINISTRY OF STATE FOR THE DEVELOPMENT OF NORTHERN KENYA AND OTHER ARID LANDS
ARID LANDS RESOURCE MANAGEMENT PROJECT II**

DROUGHT MONITORING BULLETIN, JUNE 2009

Marsabit, Laisamis and Chalbi Districts

Warning Stages



Livelihood zone	Warning Stage	Trend
Agro-Pastoralist	Alarm	Worsening
Pastoral-All species	Alarm/Emergency	Worsening
Fishermen/Pastoralist	Emergency	No change

Seasonal calendar

Short Dry Spell	Long Rains	Long Dry Period	Short Rains
Jan Feb Mar	Apr May	Jun Jul Aug Sep Oct	Nov Dec

Situation overview

- The weather was characterised by common sunny, windy/dusty and cool days. A few areas in pastoral livelihood zone received rainfall for one day on average, while the agro/pastoral livelihood received 8.6mm in 2days. This was inadequate in terms of days and quantity.
- The quality of natural vegetation was very poor in most parts of the district, resulting in heavy livestock concentration in few areas that recorded a few days of showers from the failed season.
- The failed rains heightened deterioration in both the quality and quantity of natural vegetation, resulting in scarce pasture and browse in most parts of the greater district.
- Existing water sources both in lowlands and highlands registered significant low yields particularly in boreholes, traditional wells, and the few natural springs which represent the permanent sources in the region.
- Body conditions of all livestock species deteriorated further to an extent of significantly increasing mortality rates among shoats, cattle and few donkeys' species, especially among lactating and new borns. This situation was abnormal for the time of the year.
- Cattle price averages reduced by 143.46% compared to long term mean averages of 2000 to 2008 while shoats' prices also declined as a result of deteriorating livestock body conditions and depressed sales rates in terminal markets. The situation was moving towards total market collapse for the livestock sector.
- Milk was unavailable in greater Marsabit district due to failed rains and livestock migration that kept livestock away from homesteads.
- EMOP relief food allocation continued in all distributing centres targeting between 52% of the needy households in greater Marsabit district. The targeting was inadequate and some households remained hungry.
- Cholera, diarrhea and upper respiratory tract infections (URTI) continued to be the major ailments reported across the district. The outbreak of cholera was confined to parts of Marsabit south district but the situation was contained through the concerted effort of Ministry of Health and NGO's.
- All areas around permanent water sources experienced depleted forage availability, resulting in increasing distances that forced livestock to trek long distances.
- Cattle in Torbi division stayed without water for up to nine days (from usual 3-4days) due to severe water stress, while shoats stayed for twelve days from four to five days for normal watering regime compared to the time of the year.
- Insecurity (raids, tribal clashes over resources and killings) continued in some areas, including Marsabit central district and Laisamis and Korr divisions of Marsabit south district.
- Due to prevailing drought in most areas, livestock migration is bound to increase in spite of potential conflicts expected.
- The nutrition status of children below 5 years remained fairly stable, with the percentage of those rated at risk of malnutrition rising to 23.5% from 21.3% the previous month.
- Decreasing livestock prices, coupled with huge increase in grain prices impacted negatively on the pastoralist and fishermen economy and threatened household food

security in larger Marsabit district, leading to alarm and emergency stages at household level.

Current interventions

- District-wide general relief food distribution was conducted targeting 80,442 direct beneficiaries out of the current population of approximately 160,747 (50.4%) for greater Marsabit district.
- Supplementary feeding programs continued at 24 health centres in all divisions targeting approximately 3,860 beneficiaries among severe malnourished children < 5years, lactating and pregnant mothers- *MOH/FH*.
- A 3-day training workshop on drought contingency and response planning was conducted for Marsabit north district for the financial year 2009/10- *VSF-G/ALRMPII*.
- Cholera outbreak in Laisamis division was contained by MOH and other stakeholders including NGOs in greater Marsabit district.
- Water trucking continued on Mt Marsabit, Hurri hills, El Hade, Torbi, Namarei and Farakoren among other water stressed parts of greater Marsabit district.
- Marsabit north district (Chalbi) drought preparedness and response planning workshop was conducted for three days by Veterinaries San Frontiers- Germany (VSF/G).

Recommendations to DSG and KFSM

- There is need to increase the number of beneficiaries for general food distribution to 80% and increase ration as an appropriate intervention to curb the prevailing food insecurity situation.
- There is need to increase the number of beneficiaries on supplementary feeding from the current 3,860 in 24 centres to 7,000 including the HIV patients in the community dispensaries and the district health facility. Comparatively, Loiyangalani division, which has been experiencing consistent malnutrition rates (52.7%), was hardest hit yet no significant measures are in place to solve the problem.
- GoK relief food should be increased to target at least 35% from 15% of the beneficiaries in the greater Marsabit district as response to such prolonged drought resulting to famine.
- There is need to increase surveillance for cholera prevention and creating awareness in the larger Marsabit district.
- De-stocking programme be initiated to minimise loss due to the increasing livestock mortalities in greater Marsabit district.
- Enhance water trucking to communities, institutions on Mt Marsabit, Hurri hills, Torbi, El Hade, Namarei, Afharen among areas faced with severe water shortages - *MOW,ALRMP, CDF, PISP* etc.
- Livestock sector should initiate de-worming and vaccination campaign.
- Fostering of peace should be encouraged within and without district borders as livestock movement are increasing beyond their normal dry season grazing areas.
- Long rains assessment should be done soon.

1.0 Environmental indicators

1.1 Rainfall

- The off-season one day shower in isolated lowland parts and 2-day showers on Mt Marsabit had no positive impact on water and forage recharge in greater Marsabit district.
- The weather was mainly characterised by common sunny, windy/dusty and cool days, which contributed to increasing cases of asthma especially in Marsabit central district.
- The failure of long rains resulted in scarce and depleted forage condition, causing notable livestock mortalities in most parts of the greater Marsabit district.

1.2 Condition of natural vegetation and pasture

- The quality and quantity of forage remained dry, scarce and depleted in most parts of larger Marsabit district.
- The scarce and depleted pasture is expected to sustain livestock not beyond mid July, and if no off season rains occur, the situation will be disastrous.
- The few isolated areas with pasture were faced with water scarcity, therefore Marsabit north and south districts experienced heavy livestock concentration. For instance, livestock from Korr, Ngurunit, Farakoren and other parts of Laisamis division migrated to Samburu district in of search of pasture and cases of insecurity were reported such as raids by Turkana community.

1.3 Water sources and availability

1.3.1 Use of water sources

- The main sources of water for livestock and domestic use failed to recharge in lowland areas, leading to severe water stress in hilly parts i.e. Mt Marsabit, Hurri hills, Torbi division of Marsabit north district and Namarei, Farakoren in Laisamis division of Marsabit south district leading to trucking.
- The existing water sources in both low and highlands parts were boreholes, traditional wells, springs, shallow wells, the lake.
- In the reviewing month, cholera incidents (water bone) persisted in most parts of Laisamis division where 65 patients were admitted to Laisamis district hospital.
- Severe water stress was experienced in Torbi division where cattle went for nine days without water compared to 4 days in a normal season and shoats for 12 days from 4-5 days.

1.3.2 Distances to water sources

- Average distances to water sources (domestic) slightly increased from an average of 6kms in the previous month to 8kms while for livestock use increased from 15kms to 22kms. This indicates that, livestock water use is outside normal situation of the year.
- Water shortage was an emergency situation in Hurri hills and its surroundings (distances averaging 28kms in Marsabit north district while for Namarei, Arge, Afaren, Koom and Ngurunit location of Marsabit south district averaging 13 to 18kms, and Marsabit central district averages between 8 to 14kms.

- Generally, livestock water stress in larger Marsabit district was expected to be on emergency situation come mid July.
- The increasing distances to water sources for livestock use were indication that livestock would get weak and vulnerable, leading to increased mortalities. Some livestock mortalities, especially among shoats' species were already reported in many areas including, Ngurunit, Farakoren, Afaren in Marsabit south district and Torbi, Bubisa and some parts of Marsabit north district.

1.4 Emerging issues

1.4.1 Insecurity/Conflict

- The security situation improved fairly in Marsabit north district as well as in most parts of both Marsabit south and central districts. This was evident as fewer livestock raids, tribal clashes and human killings were reported compared to similar time since 2005 to date.
- However, three livestock raids and killing of a herder were reported in Laisamis division of Marsabit south district. In Central and Gadhamoji divisions most livestock stolen were recovered through the effort of district security committee and community co-operation.
- Similarly, isolated and cross border resource conflicts were reported in Samburu district, where livestock from Korr and other parts of Laisamis division migrated to.

1.4.2 Migration

1.4.2.1 Livestock migration

- Abnormal livestock migration from dry grazing areas were reported.
- The livestock influx to Loiyangalani location of Marsabit south district as well as far northwest of North Horr location and Dukana division was as a result of previously sporty showers.
- The heavy livestock migration in for search of water and pasture will result in livestock congestion, vulnerability to diseases and will soon result to depletion of resources.

1.4.2.2 Human migration/ displacement

- Human displacement remained minimal in most areas, thus being within normal situation of the year.
- A number of household migrations were reported from North Horr to Dukana areas as a coping strategy for heightened drought spell.

1.5 Implications on food security

- The prolonged dry period had a negative effect on the pastoral livelihoods thus resulting in migration of households from North Horr division to Dukana division.
- Depleted milk availability at household level has consequently compounded food insecurity among pastoralist households to remarkable level.
- The failed long rainy season continued to frustrate efforts to attain a food secure society in the (pastoral/fishermen livelihood zones) as the most affected areas of the greater Marsabit district.

- The rising food commodities prices aggravated food insecurity situation across the district.
- Inadequate beneficiaries (52%) targeted in the general relief food negatively affected food security situation at household level.

2.0 Rural economy indicators (Food availability)

2.1 Livestock production

2.1.1 Livestock body condition

- Body conditions among lactating stock in all species are fair to poor state.
- Shoats' and cattle mortality rates are on increasing trends as reported in greater Marsabit district with worse affected areas been in Laisamis, Korr, Torbi bubisa and North Horr divisions. Relatively, livestock body conditions are declining rapidly thus expected to be vulnerable to diseases.

2.1.2 Livestock diseases

- CCPP, PPR among shoats and few cases of CBPP among cattle are reported are reported in Dukana sample area but on manageable levels due to efforts by community and veterinary services.

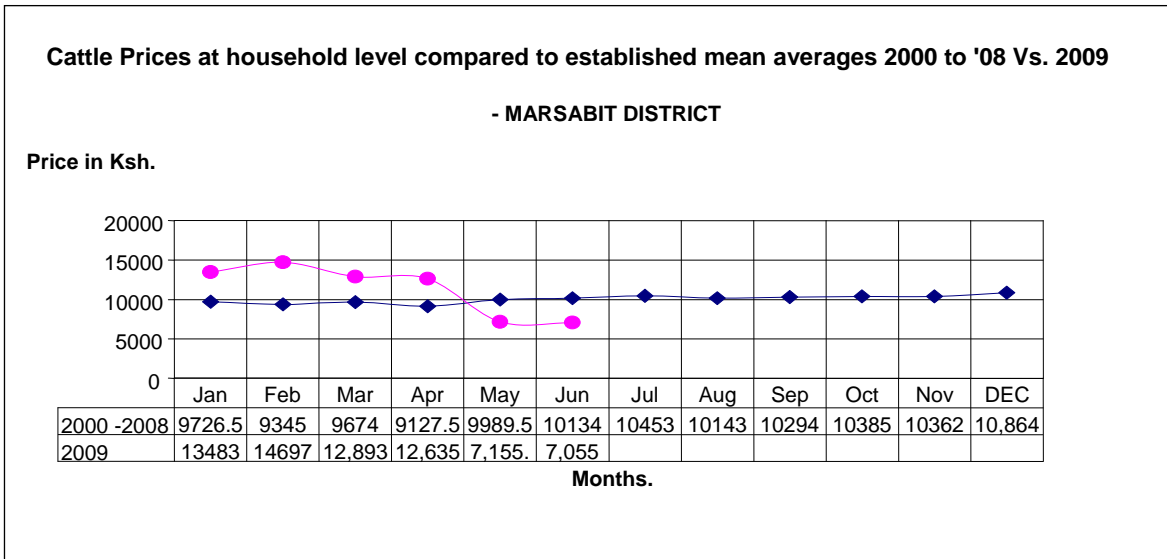
2.2 Implications on food security

- Food security situation worsened with failure of long rains season as livestock concentration was far away from homesteads for over seven previous months.
- Decreasing livestock prices as a result of poor body condition and collapse of prices in terminal market had a negative effect on food security situation at household level, especially among pastoralists and fisher folk community.
- Despite this, fisher folk community was on the brink from 'alarm' to 'emergency' and pastoralist agro/pastoralist households were at emergency stage of the drought cycle.

3.0 Access to food

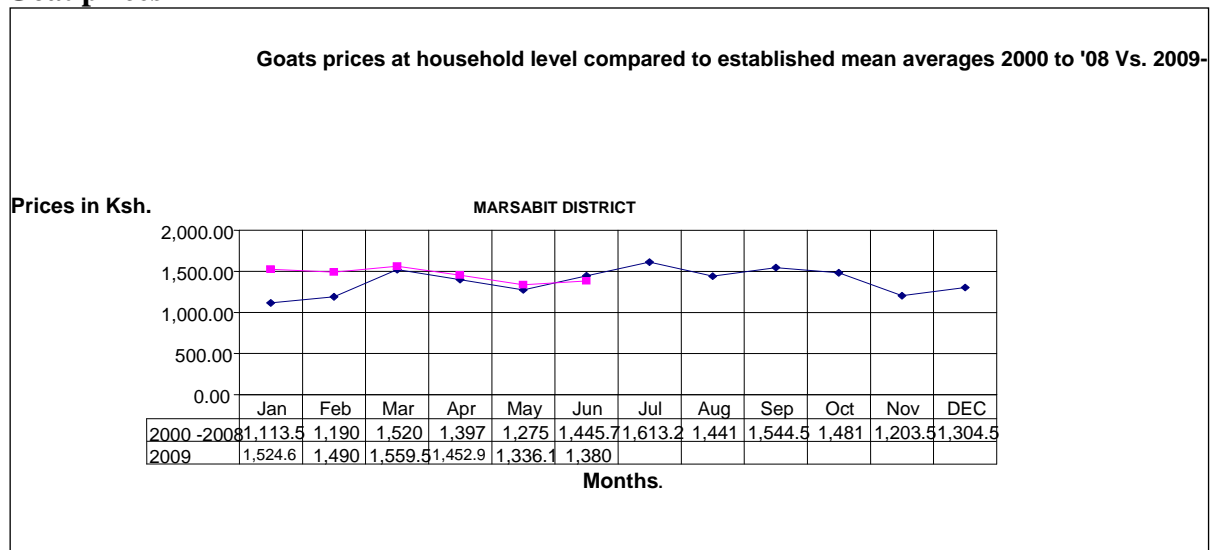
3.1 Livestock marketing

3.1.1 Cattle prices



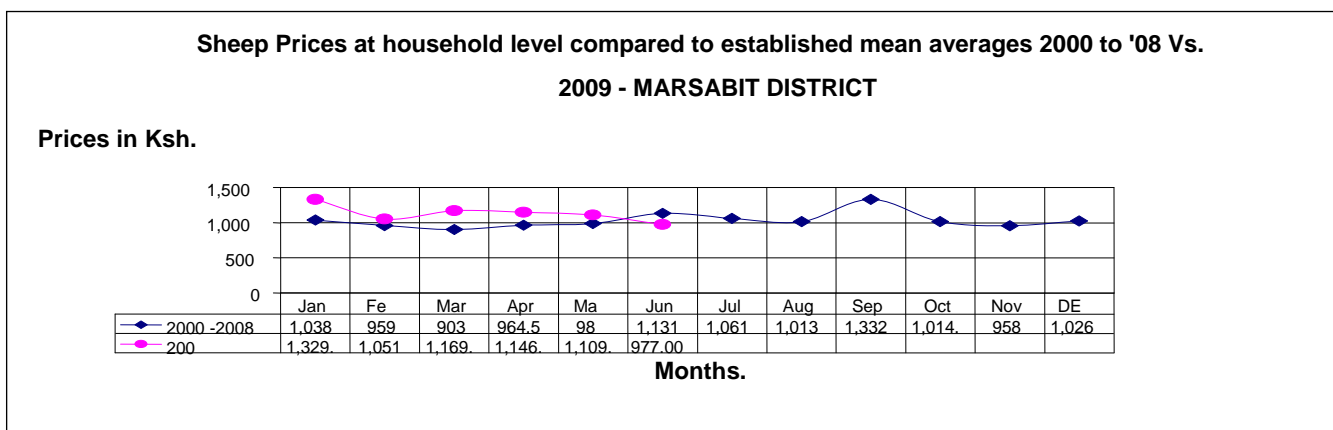
- Cattle prices at household level have currently decreased by **143.46%** compared to this time of the mean averages. This decrease can be linked to the current poor body condition and increasing sales rates at the national market.
- Sales rates currently increased by 38% compared to this time of the year as a result of deteriorating body condition hence a marginal downswing price rates by 143.46%.
- During the month under review, Maikona division in Marsabit north district (pastoralist Lv.) fetched the highest average at Ksh 10,000 from 18,000 in the previous month followed by Central division in Marsabit central district of (Agro/Pastoralist Lv.) 6,164.70 and Laisamis division of Marsabit south district (Pastoralist Lv.) has the least at 5,000.
- Generally, cattle prices are expected to decrease further with prolonged drought period which has affect the body condition as pasture gets scarcer.

3.1.2 Goat prices



- Goat price averages at household level remained fair and rose slightly to Ksh 1,380 from Ksh 1,336 in May.
- However, the price was a decline compared to the Ksh 1,445.70 long term average.
- The price was sustained by fair to poor body conditions and is therefore expected to fall further with the biting drought stress.
- During the month, higher goat prices were recorded in Laisamis division of pastoralist livelihood zone of Marsabit south district at Ksh 1,740. Maikona division (Pastoral livelihood) at Ksh1,571 and Loiyangalani of Fishermen/pastoral zone at Ksh 990.
- These differences could be linked to limited access to markets in many lowland areas and deteriorated body condition.

3.1.3 Sheep prices



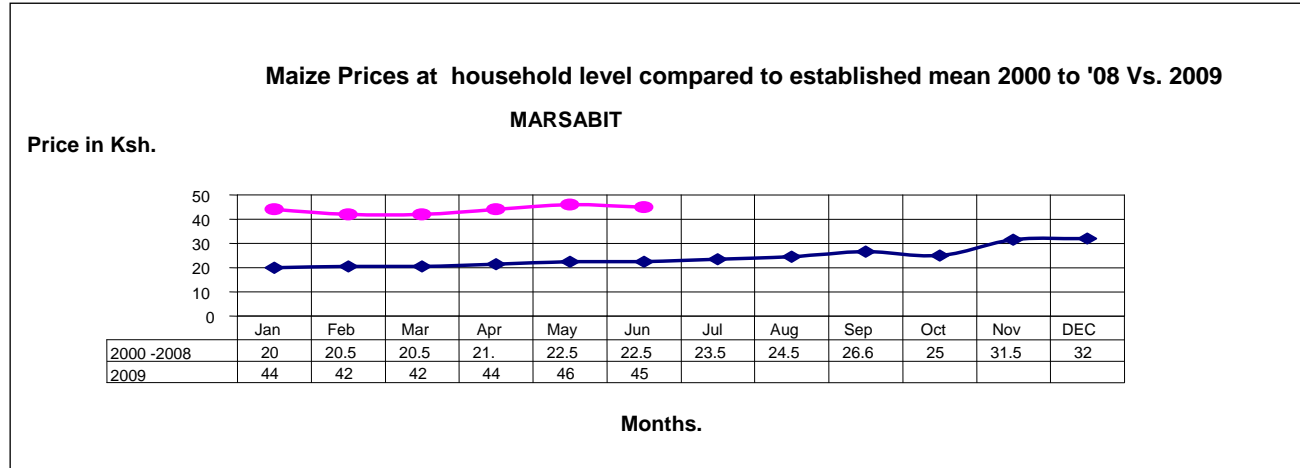
- Sheep prices decreased by 10.57% compared to previous month.
- The average price was Ksh977, down from Ksh1109 in May.
- This was attributed to deteriorating body condition and decreasing prices.
- Higher sheep prices were registered in Laisamis division (pastoralist livelihood) of Marsabit south district at Ksh1,517 followed by Maikona division of Marsabit north district (pastoralist livelihood) at Ksh1,396 while Loiyangalani division had the least at Ksh401.

3.2 Milk consumption

- Milk was not available in the greater Marsabit district.
- This abnormality was attributed to drought stress which resulted in distant livestock concentration and poor livestock body conditions.
- Depleted milk availability, especially in pastoralist households in the greater Marsabit district, aggravated food security situation in all three main livelihoods.

3.3 Crop prices

3.3.1 Maize prices



Ref: N =348 Households purchasing out of 12 sentinels each by 30 households

- Maize prices were stable during the month under review at Ksh45 per kilo.
- However, the prices increased by 204.4% compared to the long term mean of the years 2000 to 2008.
- The price increase was due to poor rainfall performance in the previous two seasons. This was a reflection of the collapsing cereal: meat ratio and hence a threat to purchasing power of pastoralist livelihoods.
- Higher maize prices were recorded in Loiyangalani division of fisher folk livelihood Marsabit south) at Ksh 50 per kilo, Laisamis division of pastoral (Marsabit south) at Ksh42 and agro/pastoral livelihood zone on Mt Marsabit in Central and Gadhamoji divisions of Marsabit central district reporting the least at Ksh 35 per kilo.
- Maize prices are expected to remain high as a result of poor performance of depleted long rains season.
- Generally, no agricultural activities were undertaken due to prevailing drought.

3.4 Income

3.4.1 Livestock income

- Sale of livestock remained the leading source of income as was reported by 97 out of 390 sampled households, especially among pastoralist households.
- Livestock sales increased by 76 compared to the long term mean for the years 2005 to 2009, especially among shoats.
- During the reviewing month, no milk availability was reported in either part of larger Marsabit district as attributed to drought stress.
- Livestock income and production is expected to drop further with the prevailing drought.

3.4.2 Other income

- Other income sources include casual labor with 18% of sampled households stating so, few others reporting sale of charcoal, sale of miraa, petty trade, formal

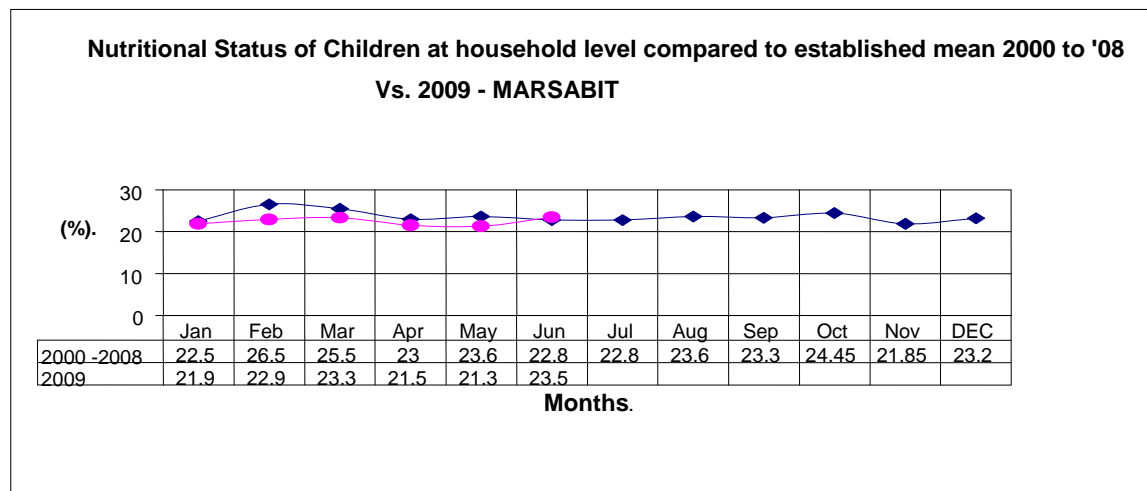
employment between Ksh200 to Ksh700 per day and engaging in degrading jobs among other minor jobs which is said to fetch between Ksh40 to Ksh195 per day.

3.5 Implications on food security

- Consistently increasing food prices throughout the previous year impacted negatively on food security situation and term of trade in all three main livelihoods.
- Increasing livestock movement to far dry season grazing areas also affects food situation especially among pastoralist livelihood.
- Failure of the long rains season is threatening food security situation in the greater Marsabit district.
- Consequently, in some pastoralist and fishermen communities reported serious food scarcity, leading to starvation including Loiyangalani, North Horr, Ngurunit, Korr etc. These allegations are widespread but not easily to verify.
- However, there were serious indications that unless urgent measures are taken to avert famine, there will be mass starvation in many parts of the larger Marsabit district.

4.0 Welfare indicators (Utilisation of food)

4.1 Nutrition status (MUAC)



Ref: N=3.1 (Avg. No. of children) x 12 Sample sites x 30 Households.

- The nutrition status of children below 5 years remained fairly stable during the month under review.
- The percentage of those rated at risk of malnutrition rose to 23.5% from 21.3% the previous month.
- 1,224 were sampled, including 630 girls and 594 boys.
- This increase was sustained by continued supplementary feeding from the Ministry of Health and WFP.
- Higher malnutrition rates were recorded in Loiyangalani division of fisher folk livelihoods in Marsabit south district at 52.7% from 54.8% in previous month,

followed by North Horr division in Marsabit north district of Pastoralist livelihood at 19.9% while Central division in Marsabit central district of Agro/pastoral livelihood had the least at 13.6%.

- The malnutrition rates are expected to increase in near future with prolonged drought stress in greater Marsabit district.

4.2 Human health

- During the reviewing month, **cholera** disease incident is reported in Merille, Laisamis, Koya, Ulauli and Kamotonyi sub locations all in Laisamis division where 65 in-patient were treated in (Liasamis) Marsabit south district hospital.
- Diarrhea cases among children below five years were observed in Loiyangalani, Laisamis, Ngurunit and some parts of greater Marsabit district though being within normal manageable level at local dispensaries.
- Relatively, human health condition has been compounded by lack of food , conditions that make people susceptible to diseases.

5.0 Current interventions

5.1 Non-food interventions

- Repair works on community boreholes in Burgabo, Kubi Qalo, Namarei, Gobbore, and Dirib Gombo – *NWSB, ALRMP*.
- Water trucking done on Mt. Marsabit, Turbi, Burgabo, Namarei, Hurri hills-ALRMP, Water, PISP and CDF.
- Provision of fuel to all community boreholes and other community water schemes –*ALRMP/Ministry of Water*.
- A three days workshop on drought preparedness and contingency response planning for Marsabit North district was conducted for 2009/10 – *Veterinaries San Frontiers/Germany VSF/G-ALRMP*.
- Provision of hay to community on Mt. Marsabit.

5.2 Food aid

- Supplementary feeding program (SFP) in 18 out of 24 health centres in larger Marsabit district targeting 1,356 direct beneficiaries among severely malnourished children was undertaken.
- CARE Kenya is covering 1,453 beneficiaries with cash transfer; 331 from Gadhamoji division of Marsabit district, 222 persons from Log logo of Laisamis district and 900 from Kalacha and El -Gade of Chalbi district -Equity Bank sponsorship. The problem with Hunger Safety Net Program (HSNP) by CARE does not follow any known food insecurity pattern in their Targeting of communities and households. For instance Loiyangalani and North Horr locations, which persistently suffer severe food insecurity situation but will not be covered by HSNP under CARE.
- GoK relief allocation was not received in Marsabit north district thus affecting most needy locations within the larger Marsabit district.
- EMOP food aid was distributed to all relief centres of greater Marsabit district targeting 80,442 direct beneficiaries from the total population of 160,747 people.

5.3 Other coping strategies

The coping strategies among households include;

- Purchase food on credit, borrowing food from relatives and friends, reducing numbers of meals per day, reducing sizes of meals and swap to cheaper or less preferred foods. These coping strategies are practiced more compared to this time of the years.
- The commonly applied copying strategy among pastoralist livelihood is slaughtering all livestock new borne as a measure to rescue the lactating stock - Community.
- Increasing livestock sales is opportunistically exercised as copying strategy for prolonged drought stress - Community.
- Generally, the applied coping strategies are more stressful than normal compared to this time of the year.

6.0 Recommendations to DSG and KFSP

- Supplementary and therapeutic relief assistance should be scaled up in most affected areas like Loiyangalani division to curb the existing malnutrition and food shortages.
- Continue EMOP relief food to sustain the alarming and emergency food shortages among 80% of the population in greater Marsabit district.
- Need for water trucking to water stressed areas of Central, Gadhamoji divisions of Marsabit central district, Namarei, Afharen in Marsabit south district, and Turbi, El Beso, Hurri hills and its surrounding communities in Marsabit north district to avert the chronic shortages. Additionally, repair and maintenance of community boreholes should be emphasised with off season drought period.
- Increase School Feeding Programme (SFP) to intervene the disastrous food insecurity at household level.
- Close monitoring on all food based sector should be observed on such drastic weather situation.
- De-stocking programme should be undertaken as an appropriate intervention.
- Flexible and accommodative contingent budget as a result of debilitating drought stress. **Action- WFP, KFSSG, ALRMPII and other DAs.**
- Continuous disease surveillance should be emphasised in order to contain disease outbreaks especially PPR, CCBP, CCPP and Anthrax incidence to areas where livestock affected or concentrated.
- De-stocking program should be initiated to help pastoralist recoup some losses due to prevailing drought situation will lead to massive losses of livestock.
- MOH should closely monitor incidences of cholera cases in all parts of Laisamis division of Marsabit south district and other areas to avoid similar outbreaks. Severe water scarcity and concentration of people to few water points with poor hygiene practices are condition of transmission of cholera disease.
- Need for posting of more medical personnel's to community dispensaries and health sectors in greater Marsabit district.

- Peace meetings should be encouraged, especially among the various communities affected by conflicts.
- Cross border peace meetings should be emphasized by all stakeholders to enable free movements of livestock with prolonged drought period. – *PAS, Community and other stakeholders.*