



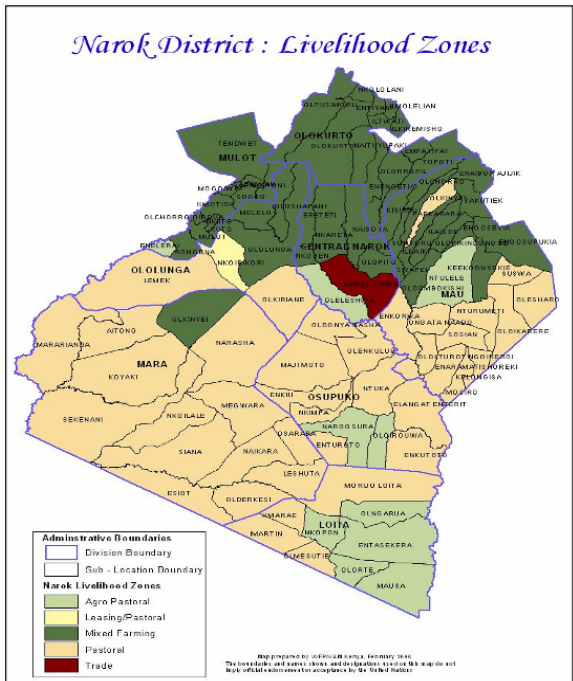
**OFFICE OF THE PRIME MINISTER  
MINISTRY OF STATE FOR THE DEVELOPMENT OF NORTHERN KENYA AND OTHER ARID LANDS  
ARID LANDS RESOURCE MANAGEMENT PROJECT II**

**DROUGHT MONITORING BULLETIN, JUNE 2009**

**Narok District**

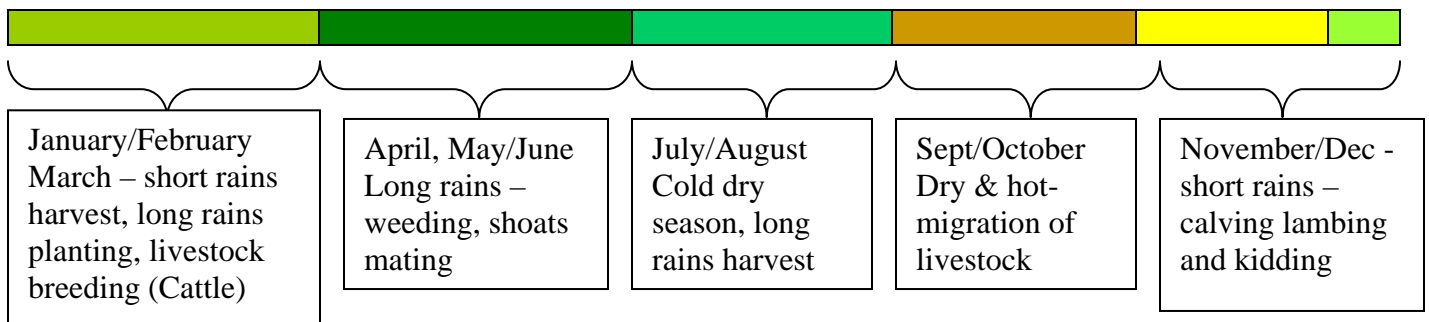
**Warning**

**Stages**



Livelihood Zone	Warning Stage	Trend
Agro Pastoral	Alert	Worsening
Entasekera, Naroosura, Suswa		
Mixed Farming	Alert	No Change
Nairragi-Enkare, Mulot		
Pastoral	Alarm	Worsening
Olmesutie, Ntuka, Mosiro, Oletukat		
Leasing/ Pastoral	Alarm	No Change
Lemek, Ololulunga,		
Pastoral Tourism	Alert	No Change
Koyiaki		

**Seasonal calendar**



## **Situation overview**

- The month was dry and cold with only 2 days of light scattered rainfall recorded. On average 10mm of rainfall was recorded. This was especially in the upper areas of Olokurto and parts of Mulot.
- Pasture and browse conditions drastically changed due to adverse weather conditions
- Livestock body conditions started to decline due to deteriorating pasture conditions. This is impacting negatively on the market conditions.
- Only a few maize farmers would be lucky to harvest some crop, especially in the upper parts of the district including Mulot and some parts of the agro pastoral areas of Loita.
- Water conditions also declined as compared to the previous month, with some pans already drying up due to lack of precipitation.
- The main sources of water for the last month included dams, major rivers, strategic boreholes and springs/wells. The distances to and from watering points increased from an average of 2-3 Km last month to an average of 4-5 kms during the reporting period.
- Apart from a few cases of ECF and enterotoxaemia in the lower parts of Osupuko division, there were no major livestock diseases during the review period.
- Milk availability has slightly improved following the improved livestock body conditions but is still far below normal due to the low calving rates and the impacts of the recent drought.
- Though there was some slight improvement in terms of body conditions, livestock prices have remained below normal with cattle selling at an average of Ksh 8,000 compared to Ksh10,000 – 15,000 under normal circumstances.
- The shoa's prices did not change during the reporting period. On average the prices remained at Ksh 1300 and 1,200 for sheep and goats respectively.
- Prices of cereals remained within the previous month's rates, with maize selling at Ksh45 per kilo while legumes sold at an average of Ksh80 per kilo.
- The slight decrease was mainly attributed to positive impacts of the recent rains where availability of milk has increased and some farmers are now getting a crop of green maize mainly for household consumption.
- The nutrition status of children under five continued to improve compared to the previous month. On average 16% of 800 children sampled were at risk of malnutrition. This was in comparison to the high of 24% of 1600 recorded last month.
- The district was at the alert stage in terms of food security situation. The pastoral and leasing pastoral areas are however on the alarm stages. The situation is likely to deteriorate if the current weather conditions prevail.

### **Current interventions**

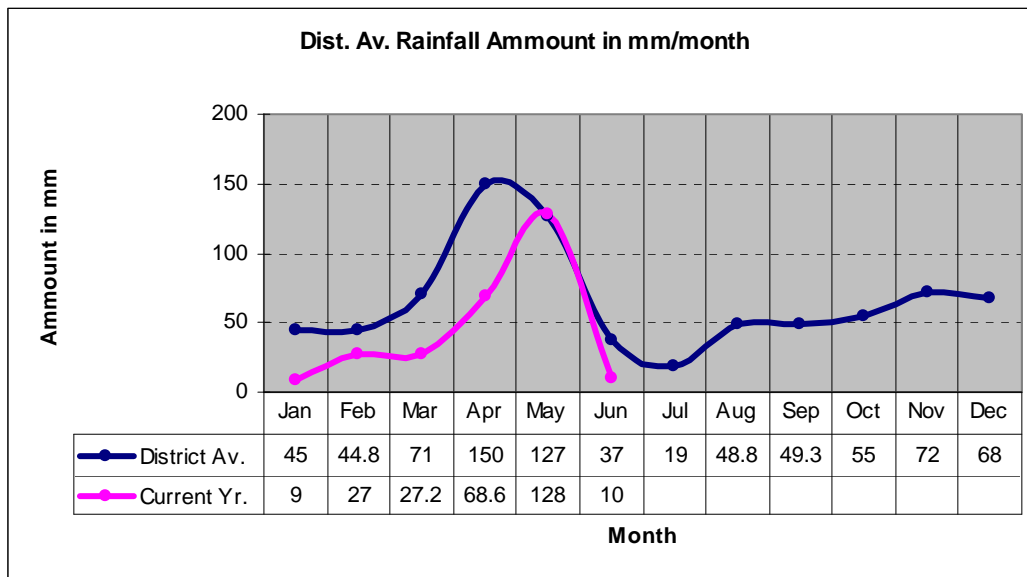
- Capacity building trainings for communities undertaken by various stakeholders
- Peace meetings for communities vulnerable to resource based conflicts.
- Distribution of relief seeds to farmers by through the Ministry of Agriculture (D.A.O).
- Protection and development of Loita, Sakutiek, and Kimogoro springs (ALRMP II, M.W&I, W.R.M.A).
- Integrated medical outreach alongside the anti jigger campaign at Enaramatishoreki and Isinon Locations. (D.M.O.H, A.C.K, Red Cross and ALRMP II).
- Tree planting exercises by various groups supported by ALRMP II and K.F.S and ENSDA.
- MoH, Operation Eye Sight International is currently drilling more boreholes in its district wide trachoma eradication programme.
- World Vision, World Concern, APHIAII, Kenya Red Cross and other institutions are supplementing the GoK activities in provision of water and capacity building support in various divisions.

### **Recommendation to DSG and KFSM**

- An assessment of the food security situation in the district should be undertaken to ensure timely interventions are recommended and implemented.
- Relief food and other emergency interventions(non food) should be availed to the affected population approximately numbering 100,000.
- The few farmers lucky to have gotten a crop of maize should be encouraged to store their harvests and be trained on proper storage techniques.
- Livestock farmers should be encouraged to de-stock their herds to reduce the impacts of losses in the event of a drought which is imminent.
- Support to schools feeding programme was also recommended, especially for the affected schools that are not currently in the WFP Expanded school feeding programme.

## 1.0 Environmental indicators

### 1.1 Rainfall



**SOURCE: ALRMP,WRMA**

- The month was dry and cold with only 2 days of light scattered rainfall recorded. On average 10mm of rainfall was recorded.
- This was especially in the upper areas of Olokurto and parts of Mulot.

### 1.2 Condition of natural vegetation and pasture

- Pasture and browse condition deteriorated fast all over the district due to lack of precipitation.

### 1.3 Water sources and availability

- Several pans and dams had enough water for livestock as well as for domestic use. The volumes might, however, not hold for long as they seem to dry up fast.
- The main sources of water for the last month included dams major rivers, strategic boreholes and springs/wells.
- The distances to and from watering points have however slightly increased following the drying up of some pans and streams during the month to an average of 4-5 Kms for livestock as well as for domestic use.
- The distances were considered normal during the time of the year.
- The situation is, however, likely to worsen if the current weather conditions prevail. This will impact negatively to the food security situation.

The table below indicates water sources and percentage of households using them, compared to a normal situation.

Water source	1	2	3	4	Others
% Of h/holds depending on the source	25	30	15	8	2
% Of h/holds normally depending on source	25	50	15	8	2

1.Natural rivers 2. Catchment pools/dams 3. Constructed shallow wells/functional 4. Boreholes (functional)

### 1.3.1 Distance to water sources

- From an average of 10-15 Km travelled last month, the distances reduced slightly to an average of 6-8 Km for both livestock and domestic use.
- This impacted positively to the food security situation as the extra time was spent on other economic activities such as farming and tending for the young ones and the vulnerable

The table below indicates average distances to water sources compared to normal situation

Water sources	1	2	3	4	Others
Average Kms to the source	4	5	5	5	4
Normal Kms to the source	4	3	5	8	2

1. Traditional rivers/wells 2. Catchment pools/dams 3. Constructed shallow wells/functional 4. Boreholes (functional)

## 1.4 Emerging issues

### 1.4.1 Insecurity/conflicts

- Apart from a few cases of predation, there were no major security concerns in the district.

### 1.4.2 Livestock Migration

- No in-migration was reported in the district during the review period
- There were no reports of outmigration during the reporting period
- Movement of livestock within the district reportedly continued as herders move their livestock away from the wildlife migration corridors especially in Mara and Osupuko.

### 1.4.3 Human migration/displacement

- No major movement of humans was reported during the review period except cases of a few people moving into the district in search of casual labor and charcoal burning.
- This was also normal during the time of the year.

## 2.0 Rural economy indicators (Food availability)

### 2.1 Livestock production

#### 2.1.1 Livestock body condition

- Livestock body conditions improved further compared to the previous two months.
- The body conditions may soon start to decline due to the prevailing weather conditions. Pastures and browse conditions declined fast and may compound the problem further.
- This will impact negatively on the food security situation.

#### 2.1.2 Livestock health

- There were no major livestock diseases reported during the month.

- The department of livestock production veterinary ensured the situation doesn't change.

### 2.1.3 Milk production

- Milk availability improved slightly following the improved weather conditions but was still far below normal due to the low calving rates and the impacts of the recent drought.
- Where milk was available, consumption was mainly reserved for the young children.

## 2.2 Crop production

### 2.2.1 Timeliness and status of various crop production activities

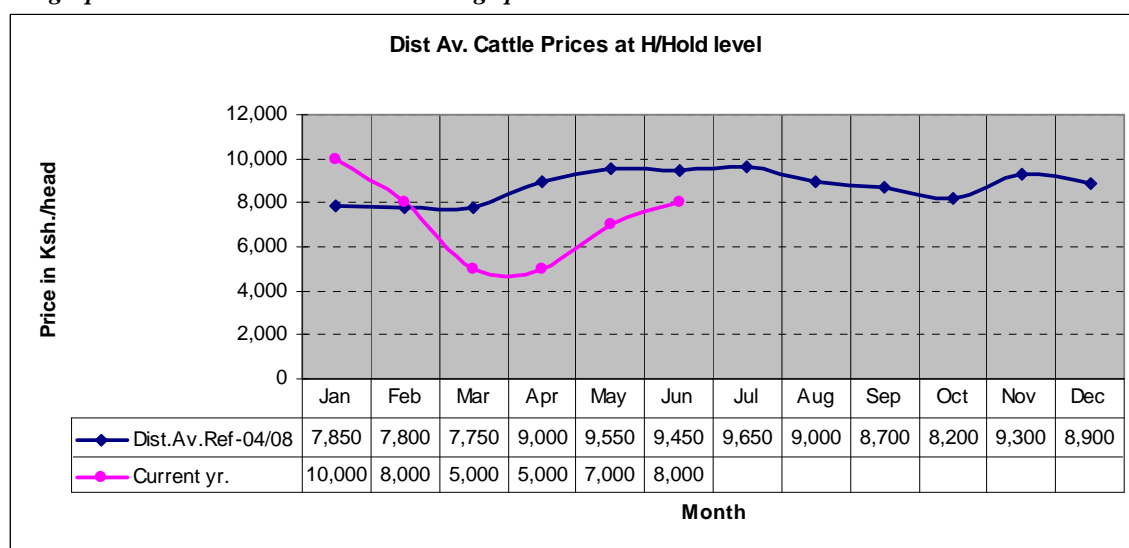
- The wheat crop was good to fair for both farmers in Narok North and South districts depending on the level of attention and also the timing of the planting season. However, majority farmers experienced hardships in spraying the crop due to high costs and the poor cash economy at present. This is likely to impact negatively on the yields. The crop was almost at the harvesting stages in Narok South and especially among the large scale farmers.
- The maize crop in most parts of the district was adversely affected by the poor weather conditions with only a few farmers expecting to harvest though the yields are expected to be low. Those farmers who planted early were however getting their maize green and also about to harvesting the beans crop which is also being eaten green currently
- Crops under irrigation in Naroosura and Mosiro were in good condition but the acreage was very low due to most farmers leaving the areas with their livestock in search of water and pasture.

## 3.0 Access to food

### 3.1 Livestock marketing

#### 3.1.1 Cattle prices

*The graph below shows district cattle average prices in Ksh. At the household level*



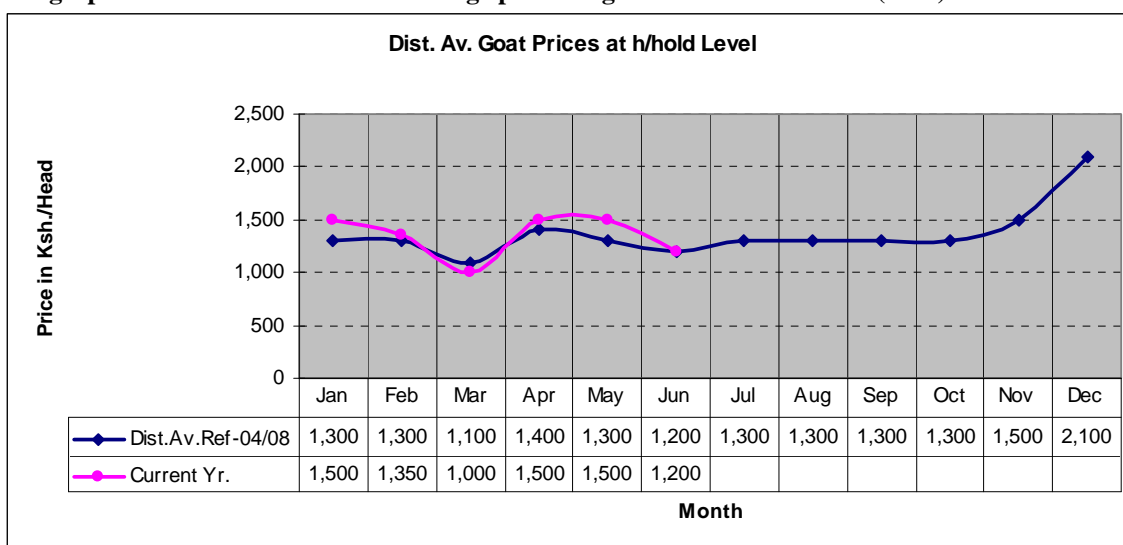
Source: ALRMP II NAROK

- Though there was some slight improvement in terms of body conditions, livestock prices remained below normal with cattle selling at an average of Ksh8000 compared to an average of 10,000 – 15,000 under normal circumstances.
- Except for the goats, the shoat's prices have not changed during the reporting period. On average remained at Ksh1300 and 1,200 for sheep and goats respectively.
- The rates were, however, within the normal during the year.

### 3.1.2 Goat prices

- Goats prices declined slightly compared to the previous month due to an increase in sales.
- This was however within the normal rates.
- This impacted positively to the food security situation.

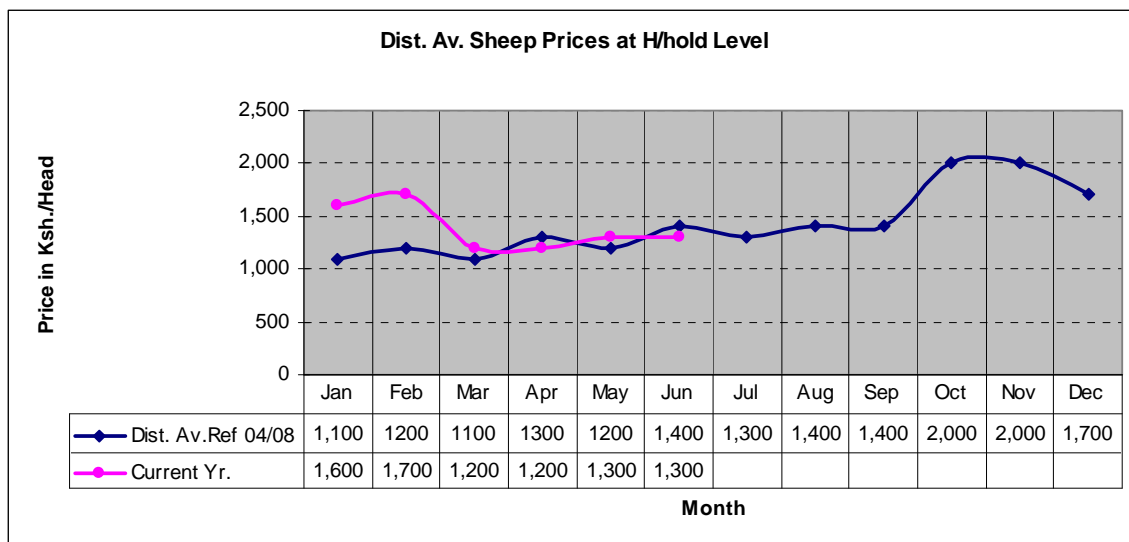
The graph below shows the district average prices of goats at the h/hold level (Ksh.)



Source: ALRMP II NAROK

### 3.1.3 Sheep prices

The graph below shows the district average prices for sheep at the household level (Ksh.)



Source: ALRMP II NAROK

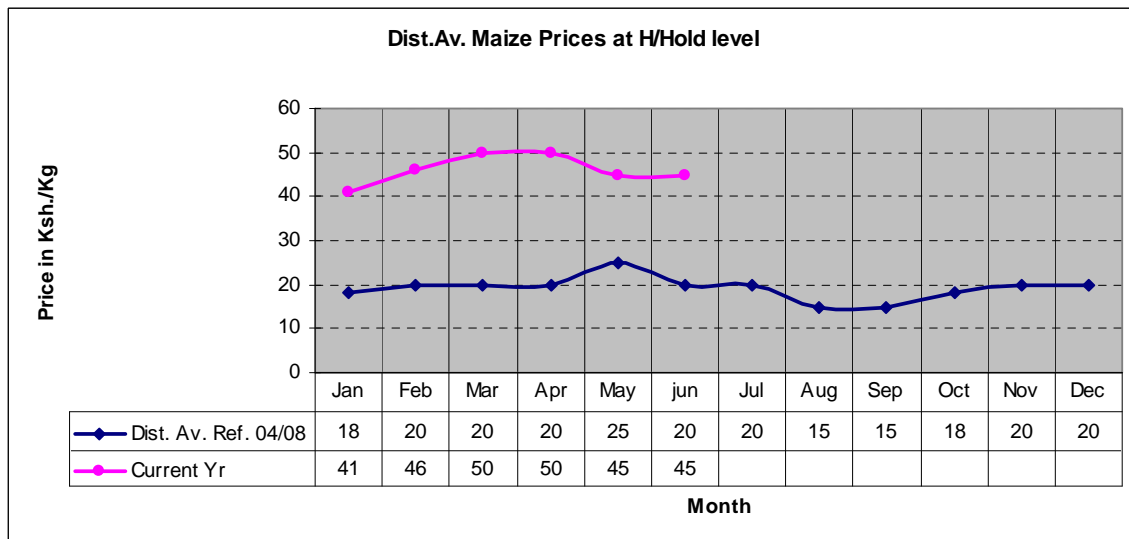
- Sheep prices remained within last month's rates selling at an average of 1,300 compared to 1,700 in February.
- This was also within the normal.
- The shoats were mainly the only source of income as they supplements the households source of food and cash as the prices for the larger stock are far much below the thresholds

### 3.2 Crop prices

#### 3.2.1 Maize prices

- The prices of food items have not changed from last months.
- Maize sold at an average of Ksh45 per kilo compared to the normal price around this time of Ksh25.

The graph below shows the average district maize prices at the household level (Ksh./Kg)

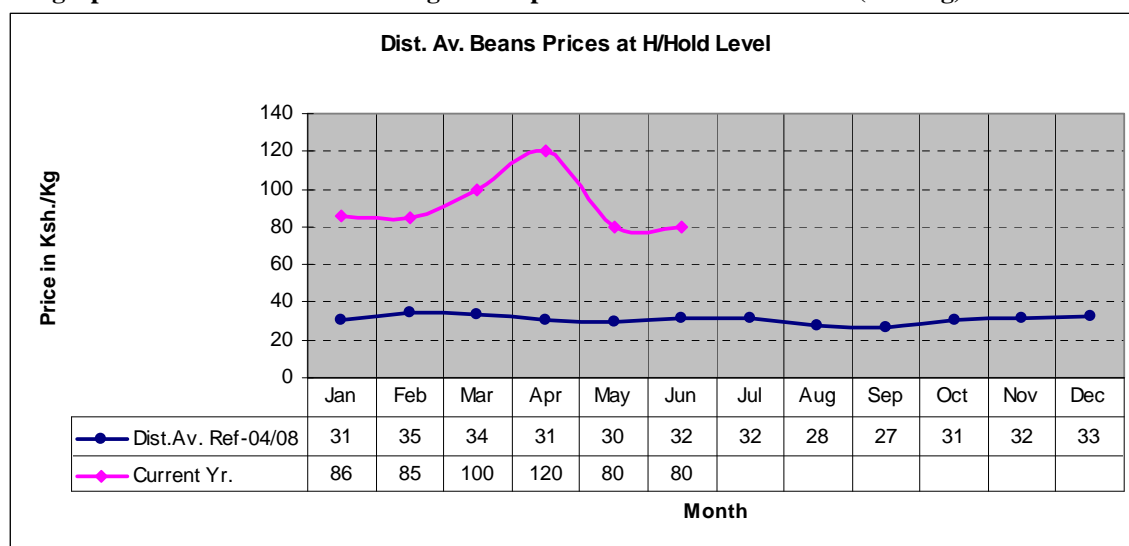


Source: ALRMP II NAROK

- This was mainly attributed to scarcity of the same in the market. There was also a national outcry on the shortage of maize and this could impact negatively on the commodity prices at the market and household levels.
- The slight decrease was however a relief to households and is mainly attributed to the prevailing weather conditions where there is an improved milk condition and also some farmer's' crops of maize and beans were being consumed at their green state.
- This was however a relief in disguise because in the long run it will impact negatively to the food security level.

### 3.2.2 Beans prices

The graph below shows district average beans prices at the household level (Ksh /kg)

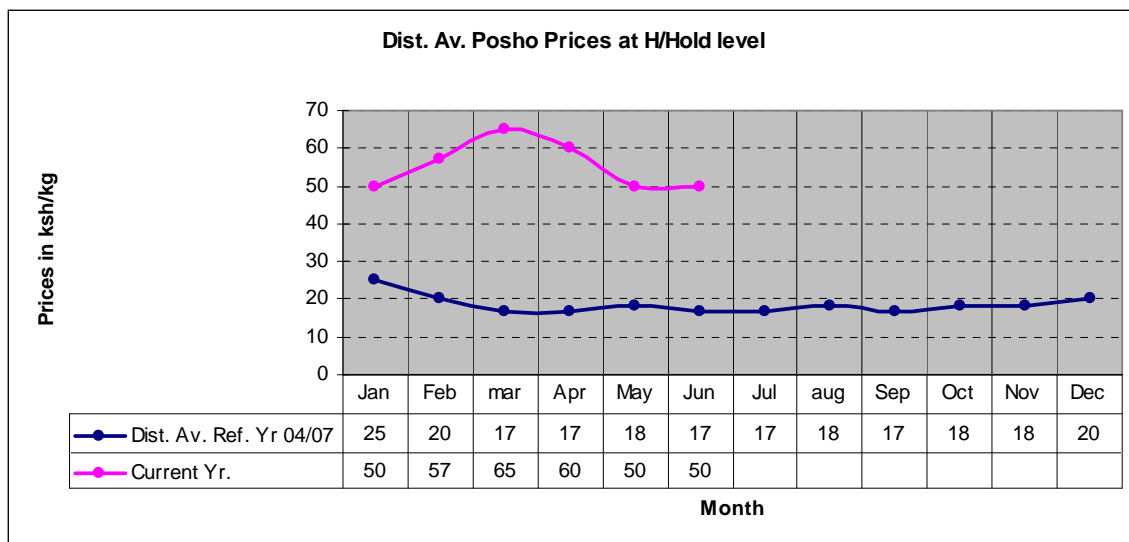


Source: ALRMP II NAROK

- Beans prices remained within the previous months average rates of Ksh80 per kilo.
- This was far beyond normal during the time of the year.
- The situation is likely to remain the same as very few farmers got a crop of the same
- If the current conditions prevail the prices are likely to go up.

### 3.2.3 Posho prices

The graph below shows the average prices of posho at the district (Ksh/Kg)



*Source: ALRMP II NAROK*

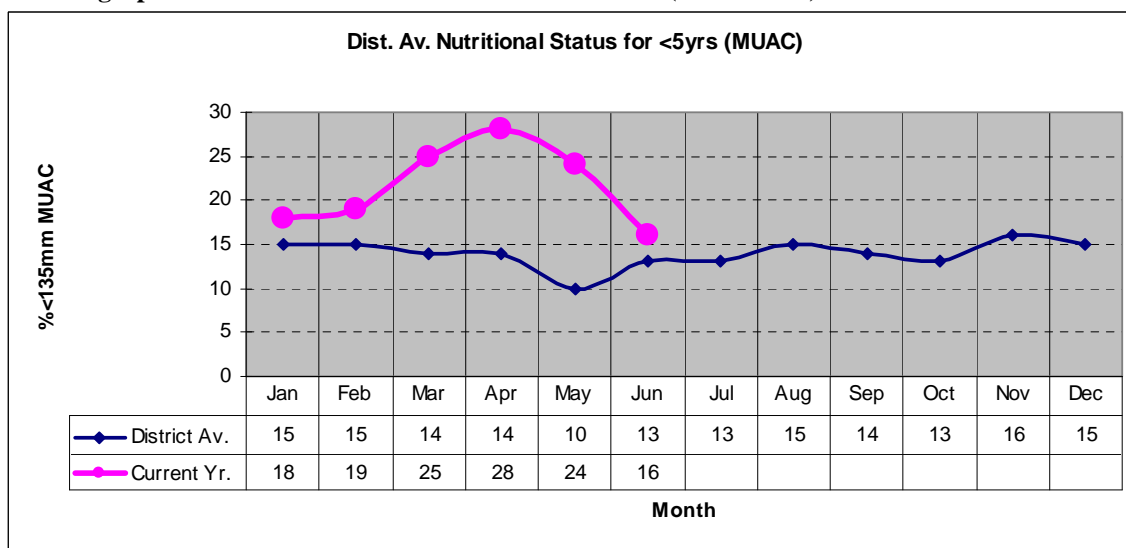
- Posho prices remained within the last month's average rate of ksh 50 per kilo.
- This was still far above normal and was mainly attributed to the scarcity of food in the household level.

#### 4.0 Human welfare indicators (Utilisation of food)

##### 4.1 Nutrition status

- The nutrition status of children under five continued to improve compared to the previous month.
- On average 16% of 800 children sampled measuring MUAC<135mm. This was in comparison to the high of 24% of 1600 recorded last month.
- The situation is likely to deteriorate if the current weather conditions prevail.

The graph below shows the MUAC malnutrition rates (% <135mm)



*Source: ALRMP II NAROK*

#### **4.2 Human health**

- There were major cases of human disease in both districts during the review period.

#### **5.0 Current interventions**

- Capacity building trainings for communities undertaken by various stakeholders
- Peace meeting barazas for communities vulnerable to resource based conflicts.
- Distribution of relief seeds to farmers by through the Ministry of Agriculture (D.A.O).
- Protection and development of Loita, Sakutiek, and Kimogoro springs (ALRMP II, M.W&I, W.R.M.A).
- Integrated medical outreach alongside the anti jigger campaign at Enaramatishoreki and Isinon Locations. (D.M.O.H, A.C.K, Red Cross and ALRMP II).
- Tree planting exercises by various groups supported by ALRMP II and K.F.S and ENSDA.
- MoH, Operation Eye Sight International is currently drilling more boreholes in its district wide trachoma eradication programme.
- World Vision, World Concern, APHIAII, Kenya Red Cross and other institutions are supplementing the GoK activities in provision of water and capacity building support in various divisions.

#### **Recommendation to DSG and KFSM**

- An assessment of the food security situation in the district should be undertaken to ensure timely interventions are recommended and implemented.
- Relief food and other emergency interventions(non food) should be availed to the affected population approximately numbering 100,000.
- The few farmers lucky to have gotten a crop of maize should be encouraged to store their harvests and be trained on proper storage techniques.
- Livestock farmers should be encouraged to de-stock their herds to reduce the impacts of losses in the event of a drought which is imminent.
- Support to schools feeding programme was also recommended, especially for the affected schools that are not currently in the WFP Expanded school feeding programme.